

District I
1625 N. French Dr., Hobbs, NM 88240
Phone: (575) 393-6161 Fax: (575) 393-0720
District II
811 S. First St., Artesia, NM 88210
Phone: (575) 748-1283 Fax: (575) 748-9720
District III
1000 Rio Brazos Road, Aztec, NM 87410
Phone: (505) 334-6178 Fax: (505) 334-6170
District IV
1220 S. St. Francis Dr., Santa Fe, NM 87505
Phone: (505) 476-3460 Fax: (505) 476-3462

State of New Mexico
Energy, Minerals & Natural Resources Department
OIL CONSERVATION DIVISION
1220 South St. Francis Dr.
Santa Fe, NM 87505

Form C-102
Revised August 1, 2011
Submit one copy to appropriate
District Office

☐ AMENDED REPORT

WELL LOCATION AND ACREAGE DEDICATION PLAT

¹ API Number 30-025-46399	² Pool Code 96553	³ Pool Name Ojo Chiso; Bone Spring
⁴ Property Code 326030	⁵ Property Name QUESO BLANCO 13 STATE COM	⁶ Well Number 602H
⁷ OGRID No. 372165	⁸ Operator Name CENTENNIAL RESOURCE PRODUCTION, LLC	⁹ Elevation 3506.8'

¹⁰ Surface Location

UL or lot no.	Section	Township	Range	Lot Idn	Feet from the	North/South line	Feet from the	East/West line	County
N	13	22S	34E		1225	SOUTH	1532	WEST	LEA

¹¹ Bottom Hole Location If Different From Surface

UL or lot no.	Section	Township	Range	Lot Idn	Feet from the	North/South line	Feet from the	East/West line	County
L	12	22S	34E		2544	SOUTH	1241	WEST	LEA
¹² Dedicated Acres 480	¹³ Joint or Infill	¹⁴ Consolidation Code	¹⁵ Order No.						

No allowable will be assigned to this completion until all interests have been consolidated or a non-standard unit has been approved by the division.

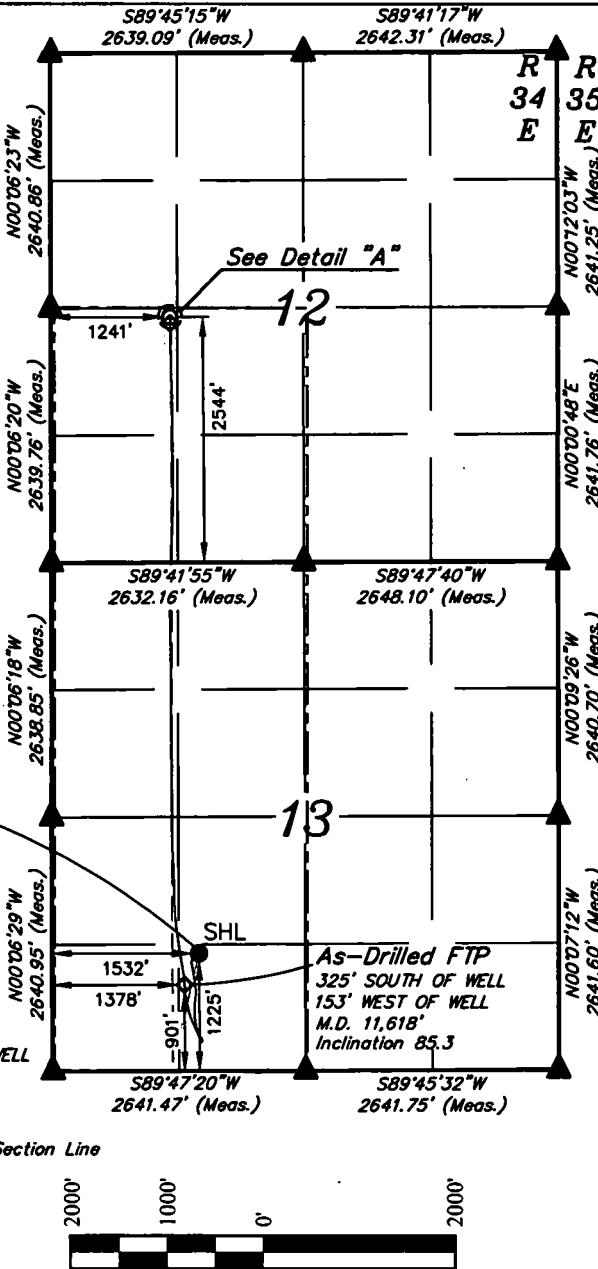
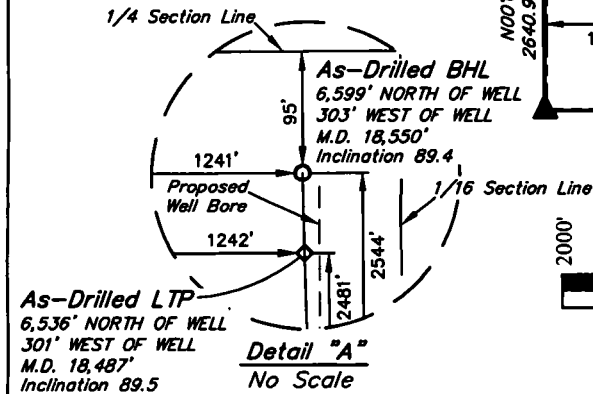
- ¹⁶
- = AS-DRILLED SURFACE HOLE LOCATION
 - ◇ = AS-DRILLED FTP/LTP
 - = AS-DRILLED BOTTOM HOLE LOCATION
 - ▲ = SECTION CORNER LOCATED

NOTE:

- Distances referenced on plat to section lines are perpendicular.
- Basis of Bearing is a Transverse Mercator Projection with a Central Meridian of W103°53'00" (NAD 83)
- Wellbore data provided by Centennial Resource Production, LLC.

APPROXIMATE WELL BORE DISTANCE FROM FTP TO LTP	
SECTION 12	2,481.63'
SECTION 13	4,387.65'
TOTAL	6,869.28'

AS-DRILLED
QUESO BLANCO 13
STATE COM 602H
Elev. Graded
Ground = 3506.8'



SCALE
DRAWN BY: R.J. 01-16-20

NAD 83 (AS-DRILLED SHL)	
LATITUDE = 32°23'16.14" (32.387817°)	
LONGITUDE = 103°25'38.04" (103.427233°)	
STATE PLANE NAD 83 (N.M. EAST)	
Y: 506003.93' X: 821034.03'	
UTM, NAD 83 (ZONE 13)	
Y: 11760184.25' X: 2125768.43'	

NAD 83 (AS-DRILLED LTP)	
LATITUDE = 32°24'20.82" (32.405783°)	
LONGITUDE = 103°25'41.23" (103.428118°)	
STATE PLANE NAD 83 (N.M. EAST)	
Y: 512538.06' X: 820705.48'	
UTM, NAD 83 (ZONE 13)	
Y: 11766715.36' X: 2125399.18'	

NAD 83 (AS-DRILLED FTP)	
LATITUDE = 32°23'12.94" (32.386927°)	
LONGITUDE = 103°25'39.84" (103.427732°)	
STATE PLANE NAD 83 (N.M. EAST)	
Y: 505678.82' X: 820882.69'	
UTM, NAD 83 (ZONE 13)	
Y: 11759858.25' X: 2125619.13'	

NAD 83 (AS-DRILLED BHL)	
LATITUDE = 32°24'21.44" (32.405957°)	
LONGITUDE = 103°25'41.24" (103.428123°)	
STATE PLANE NAD 83 (N.M. EAST)	
Y: 512601.04' X: 820703.64'	
UTM, NAD 83 (ZONE 13)	
Y: 11766778.32' X: 2125396.95'	

¹⁷ OPERATOR
CERTIFICATION

I hereby certify that the information contained herein is true and complete to the best of my knowledge and belief, and that this organization either owns a working interest or unleased mineral interest in the land including the proposed bottom hole location or has a right to drill this well at this location pursuant to a contract with an owner of such a mineral or working interest, or to a voluntary pooling agreement or a compulsory pooling order heretofore entered by the division.

Signature: *K. Schlichting* Date: 1/20/2020

Printed Name: Kanicia Schlichting

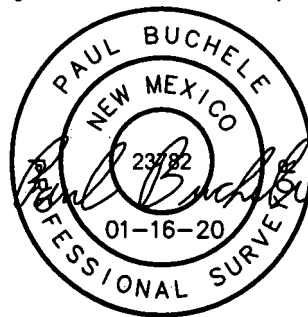
E-mail Address: kanicia.schlichting@cdevinc.com

¹⁸ SURVEYOR
CERTIFICATION

I hereby certify that the well location shown on this plat was plotted from field notes of actual surveys made by me or under my supervision, and that the same is true and correct to the best of my belief.

January 15, 2020

Date of Survey
Signature and Seal of Professional Surveyor:



Certificate Number:

Intent ☐ As Drilled ☒

API #
30-02546399

Operator Name: Centennial Resource Production, LLC	Property Name: Queso Blanco 13 State Com	Well Number 602H
---	---	---------------------

Kick Off Point (KOP)

UL N	Section 13	Township 22S	Range 34E	Lot N	Feet 1225	From N/S South	Feet 1532	From E/W West	County Lea
Latitude 32.387817					Longitude -103.427232			NAD 83	

First Take Point (FTP)

UL N	Section 13	Township 22S	Range 34E	Lot N	Feet 901	From N/S South	Feet 1378	From E/W West	County Lea
Latitude 32.386927					Longitude -103.427732			NAD 83	

Last Take Point (LTP)

UL L	Section 12	Township 22S	Range 34E	Lot L	Feet 2544	From N/S South	Feet 1241	From E/W West	County Lea
Latitude 32.405957					Longitude -103.428123			NAD 83	

Is this well the defining well for the Horizontal Spacing Unit? ☒

Is this well an infill well? ☐

If infill is yes please provide API if available, Operator Name and well number for Defining well for Horizontal Spacing Unit.

API #

Operator Name:	Property Name:	Well Number
----------------	----------------	-------------

KZ 06/29/2018