

DISTRICT I
1625 N. FRENCH DR., ROERS, NM 88240

DISTRICT II
1301 W. GRAND AVENUE, ARTESIA, NM 88210

DISTRICT III
1000 Rio Brazos Rd., Aztec, NM 87410

DISTRICT IV
1220 S. ST. FRANCIS DR., SANTA FE, NM 87505

State of New Mexico
Energy, Minerals and Natural Resources Department

OIL CONSERVATION DIVISION
1220 SOUTH ST. FRANCIS DR.
Santa Fe, New Mexico 87505

Form C-102
Revised October 12, 2005
Submit to Appropriate District Office
State Lease - 4 Copies
Fee Lease - 3 Copies

WELL LOCATION AND ACREAGE DEDICATION PLAT

☐ AMENDED REPORT

API Number 30-025-37915	Expl Code 23000	Pool Name Eunice Monument 6B/5A
Property Code 302708	Property Name NMGSA UNIT	Well Number 05-18518
OGRID No. 873	Operator Name APACHE CORPORATION	Elevation 3701'

Surface Location

UL or lot No. F	Section 19	Township 19-S	Range 37-E	Lot Idn	Feet from the 1430	North/South line NORTH	Feet from the 1455	East/West line WEST	County LEA
---------------------------	----------------------	-------------------------	----------------------	---------	------------------------------	----------------------------------	------------------------------	-------------------------------	----------------------

Bottom Hole Location If Different From Surface

UL or lot No.	Section	Township	Range	Lot Idn	Feet from the	North/South line	Feet from the	East/West line	County
Dedicated Acres	Joint or Infill	Consolidation Code	Order No.						

NO ALLOWABLE WILL BE ASSIGNED TO THIS COMPLETION UNTIL ALL INTERESTS HAVE BEEN CONSOLIDATED
OR A NON-STANDARD UNIT HAS BEEN APPROVED BY THE DIVISION

LOT 1	<p>1430'</p> <p>1455'</p> <p>GEODETIC COORDINATES NAD 27 NME</p> <p>Y=601438.6 N X=819928.5 E</p> <p>LAT.=32°38'56.95" N LONG.=103°17'38.18" W</p>	OPERATOR CERTIFICATION	
LOT 2		<p>I hereby certify that the information herein is true and complete to the best of my knowledge and belief, and that this organization either owns a working interest or unleased mineral interest in the land including the proposed bottom hole location or has a right to drill this well at this location pursuant to a contract with an owner of such mineral or working interest, or to a voluntary pooling agreement or a compulsory pooling order heretofore entered by the division.</p> <p><i>Lana Williams</i> Signature Date Lana Williams 5/30/06 Printed Name</p>	
LOT 3		SURVEYOR CERTIFICATION	
LOT 4		<p>I hereby certify that the well location shown on this plat was plotted from field notes of actual surveys made by me or under my supervision, and that the same is true and correct to the best of my belief.</p> <p>MAY 08, 2006</p> <p>Date Surveyed _____ MR .</p> <p>Signature & Seal of Professional Surveyor</p> <p><i>Ronald J. Eidson</i> 5/12/06 06.11.0763</p> <p>Certificate No. GARY EIDSON 12841 RONALD J. EIDSON 3239</p>	

DISTRICT I
1625 N. FRENCH DR., HOBBBS, NM 88240

DISTRICT II
1301 W. GRAND AVENUE, ARTESIA, NM 88210

DISTRICT III
1000 Rio Brazos Rd., Aztec, NM 87410

DISTRICT IV
1220 S. ST. FRANCIS DR., SANTA FE, NM 87505

State of New Mexico
Energy, Minerals and Natural Resources Department

OIL CONSERVATION DIVISION
1220 SOUTH ST. FRANCIS DR.
Santa Fe, New Mexico 87505

Form C-102
Revised October 12, 2005
Submit to Appropriate District Office
State Lease - 4 Copies
Fee Lease - 3 Copies

WELL LOCATION AND ACREAGE DEDICATION PLAT

☐ AMENDED REPORT

API Number	Pool Code	Pool Name
Property Code	Property Name NMGSA UNIT	Well Number 05-18-518
OGRID No.	Operator Name APACHE CORPORATION	Elevation 3701'

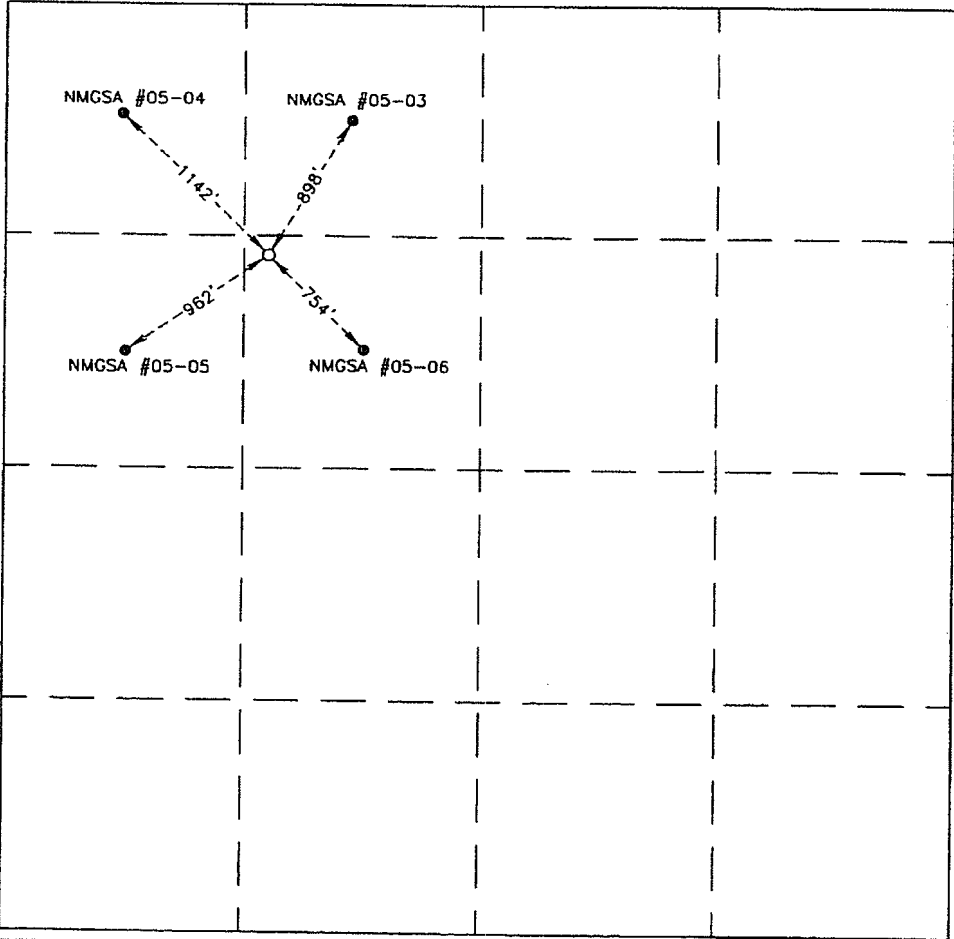
Surface Location

UL or lot No.	Section	Township	Range	Lot Idn	Feet from the	North/South line	Feet from the	East/West line	County
F	19	19-S	37-E		1430	NORTH	1455	WEST	LEA

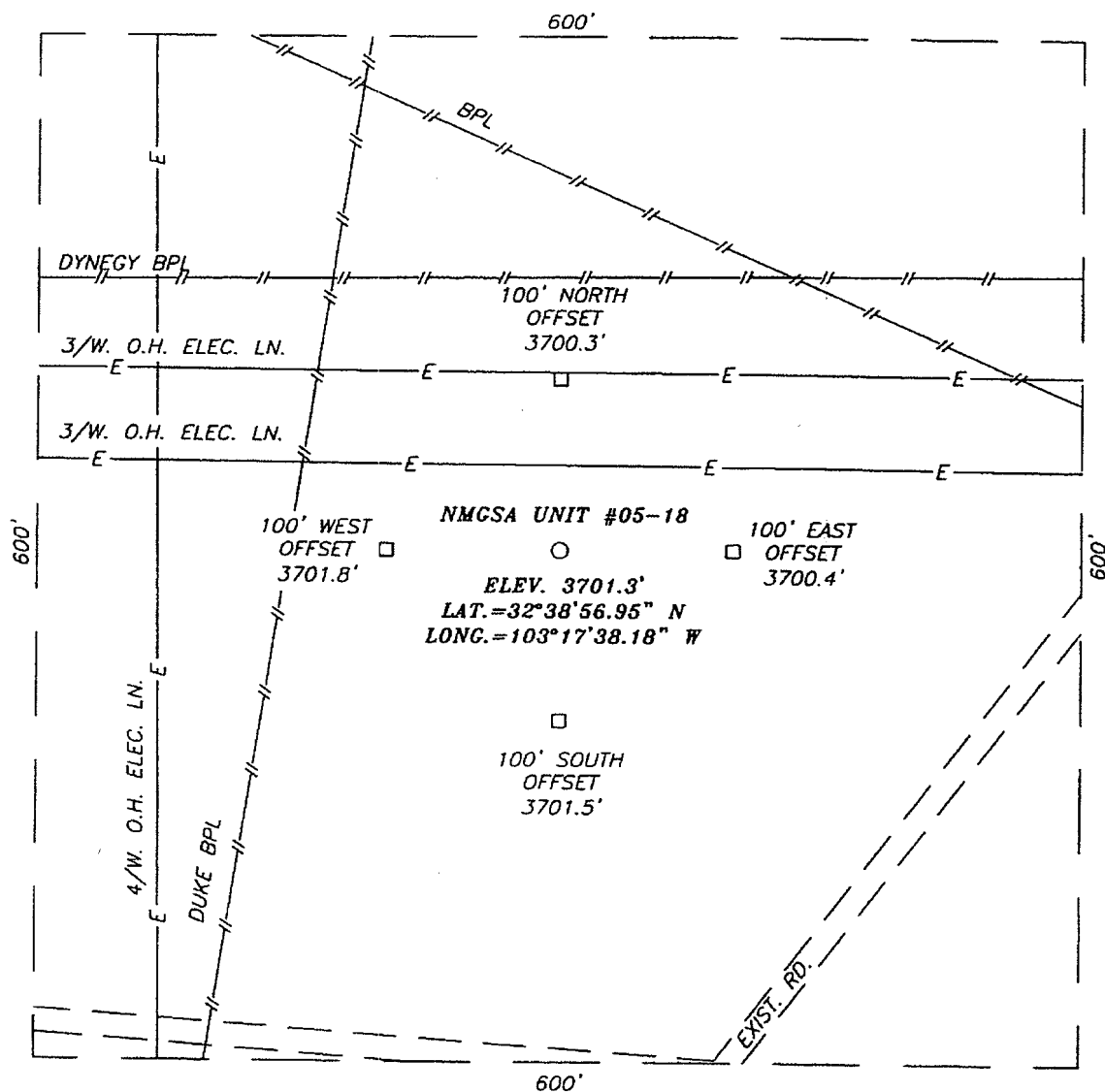
Bottom Hole Location If Different From Surface

UL or lot No.	Section	Township	Range	Lot Idn	Feet from the	North/South line	Feet from the	East/West line	County
Dedicated Acres	Joint or Infill	Consolidation Code	Order No.						

NO ALLOWABLE WILL BE ASSIGNED TO THIS COMPLETION UNTIL ALL INTERESTS HAVE BEEN CONSOLIDATED
OR A NON-STANDARD UNIT HAS BEEN APPROVED BY THE DIVISION

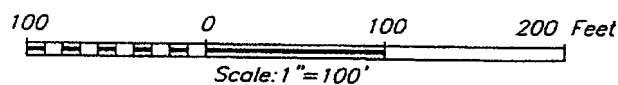
	<p>OPERATOR CERTIFICATION</p> <p>I hereby certify that the information herein is true and complete to the best of my knowledge and belief, and that this organization either owns a working interest or unleased mineral interest in the land including the proposed bottom hole location or has a right to drill this well at this location pursuant to a contract with an owner of such mineral or working interest, or to a voluntary pooling agreement or a compulsory pooling order heretofore entered by the division.</p> <p><i>Lana Williams</i> 5/30/06 Signature Date</p> <p>Lana Williams Printed Name</p> <p>SURVEYOR CERTIFICATION</p> <p>I hereby certify that the well location shown on this plat was plotted from field notes of actual surveys made by me or under my supervision, and that the same is true and correct to the best of my belief.</p> <p>MAY 05, 2006 Date Surveyed MR</p> <p>Signature & Seal of Professional Surveyor</p> <p>06.11.0763</p> <p>Certificate No. GARY EIDSON 12041 RONALD J. EIDSON 3239</p>
---	---

SECTION 19, TOWNSHIP 19 SOUTH, RANGE 37 EAST, N.M.P.M.,
LEA COUNTY, NEW MEXICO



DIRECTIONS TO LOCATION

FROM THE INTERSECTION OF U.S. HWY. 62-180 AND CO. RD. H-41 (MADDOX RD.), GO SOUTH ON MADDOX RD. APPROX. 3.2 MILES. TURN LEFT (THROUGH GATE) AND GO EAST APPROX. 0.2 MILES THIS LOCATION IS APPROX. 200 FEET NORTH.



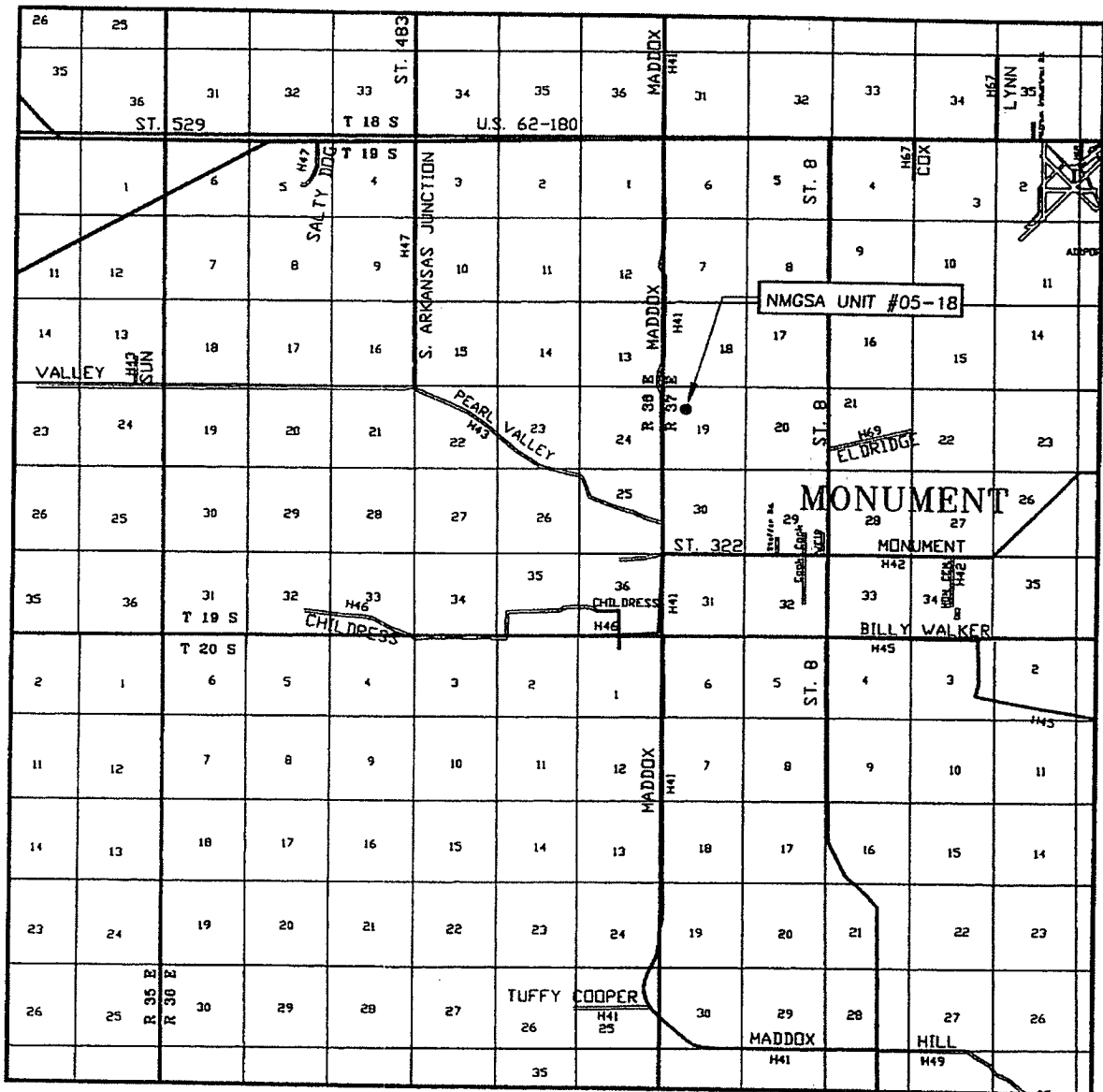
APACHE CORPORATION

NMCSA UNIT #05-18
LOCATED 1430 FEET FROM THE NORTH LINE
AND 1455 FEET FROM THE WEST LINE OF SECTION 19,
TOWNSHIP 19 SOUTH, RANGE 37 EAST, N.M.P.M.,
LEA COUNTY, NEW MEXICO.

Survey Date: 05/08/06	Sheet 1 of 1 Sheets
W.O. Number: 06.11.0763	Dr By: M.R.
Date: 05/11/06	Disk: CD#6
06110763	Scale: 1"=100'

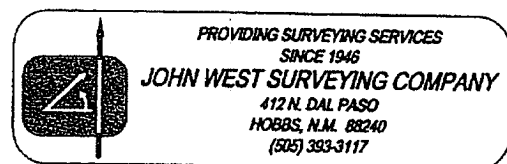
PROVIDING SURVEYING SERVICES
SINCE 1946
JOHN WEST SURVEYING COMPANY
412 N. DAL PASO
HOBBS, N.M. 88240
(505) 393-3117

VICINITY MAP

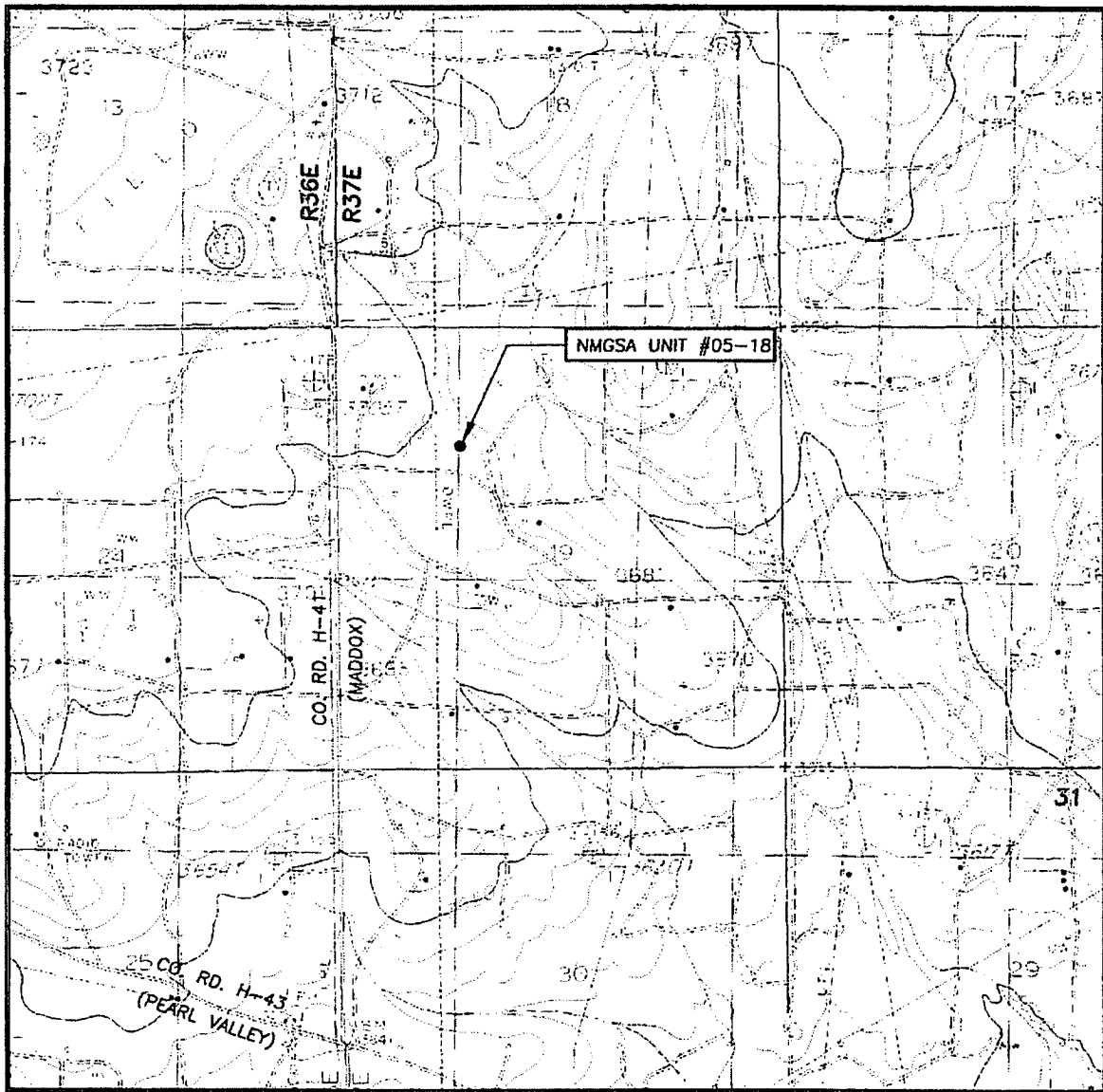


SCALE: 1" = 2 MILES

SEC. 19 TWP. 19-S RGE. 37-E
 SURVEY N.M.P.M.
 COUNTY LEA STATE NEW MEXICO
 DESCRIPTION 1430' FNL & 1455' FWL
 ELEVATION 3701'
 OPERATOR APACHE CORPORATION
 LEASE NMGSA UNIT



LOCATION VERIFICATION MAP



SCALE: 1" = 2000'

CONTOUR INTERVAL:
MONUMENT NORTH, N.M. - 10'
(WITH 5' SUPPLEMENTAL INTERVALS)

SEC. 19 TWP. 19-S RGE. 37-E
SURVEY N.M.P.M.
COUNTY LEA STATE NEW MEXICO
DESCRIPTION 1430' FNL & 1455' FWL
ELEVATION 3701'
OPERATOR APACHE CORPORATION
LEASE NMGSA UNIT
U.S.G.S. TOPOGRAPHIC MAP
MONUMENT NORTH, N.M.

