

State of New Mexico

Energy, Minerals and Natural Resources Department

DISTRICT I

1625 N. FRENCH DR., HOBBES, NM 88240

DISTRICT II

1301 W. GRAND AVENUE, ARTESIA, NM 88210

DISTRICT III

1000 Rio Brazos Rd., Aztec, NM 87410

DISTRICT IV

1220 S. ST. FRANCIS DR., SANTA FE, NM 87505

OIL CONSERVATION DIVISION 1220 SOUTH ST. FRANCIS DR. Santa Fe, New Mexico 87505

Form C-102

Revised JUNE 10, 2003

Submit to Appropriate District Office

State Lease - 4 Copies

Fee Lease - 3 Copies

WELL LOCATION AND ACREAGE DEDICATION PLAT

☐ AMENDED REPORT

API Number 30-025-37609	Pool Code 24170	Pool Name Eunice; San Andres, South
Property Code 34816	Property Name NEW MEXICO STATE S	Well Number 49
OGRID No. 00873	Operator Name APACHE CORPORATION	Elevation 3361'

Surface Location

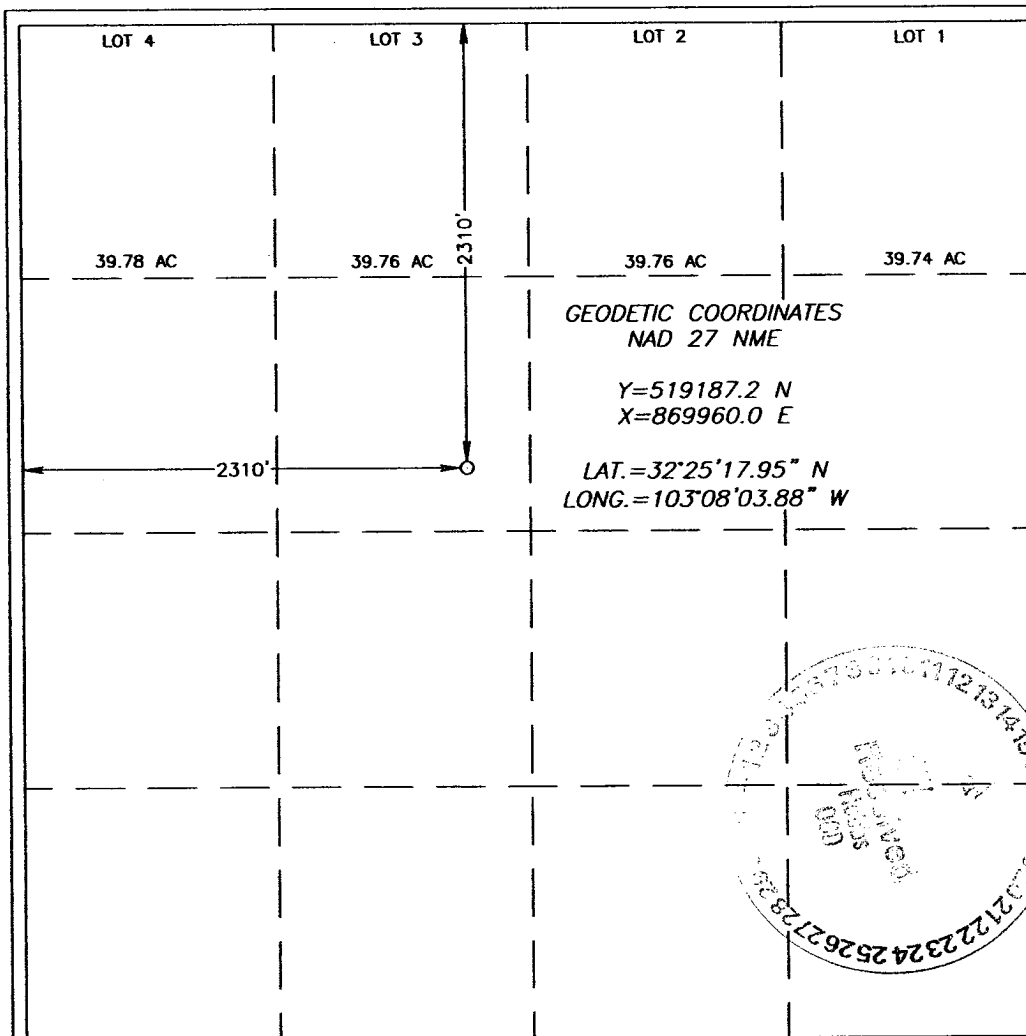
UL or lot No.	Section	Township	Range	Lot Idn	Feet from the	North/South line	Feet from the	East/West line	County
F	2	22-S	37-E		2310	NORTH	2310	WEST	LEA

Bottom Hole Location If Different From Surface

UL or lot No.	Section	Township	Range	Lot Idn	Feet from the	North/South line	Feet from the	East/West line	County

Dedicated Acres 40	Joint or Infill	Consolidation Code	Order No.
-----------------------	-----------------	--------------------	-----------

NO ALLOWABLE WILL BE ASSIGNED TO THIS COMPLETION UNTIL ALL INTERESTS HAVE BEEN CONSOLIDATED
OR A NON-STANDARD UNIT HAS BEEN APPROVED BY THE DIVISION



OPERATOR CERTIFICATION

I hereby certify the the information
contained herein is true and complete to the
best of my knowledge and belief.

Elaine Linton
Signature

Elaine Linton
Printed Name

Engineering Tech.
Title

4/24/2006
Date

SURVEYOR CERTIFICATION

I hereby certify that the well location shown
on this plat was plotted from field notes of
actual surveys made by me or under my
supervision and that the same is true and
correct to the best of my belief.

OCTOBER 7, 2005

Date Surveyed
Signature & Seal of
Professional Surveyor

Ronald J. Edson
RONALD J. EDSON
05.11.1556
10/13/05

Certificate No. RONALD J. EDSON 3239