

May 27, 2004

District I

1625 N. French Dr., Hobbs, NM 88240

District II

1301 W. Grand Ave., Artesia, NM 88210

District III

1000 Rio Brazos Rd., Aztec, NM 87410

District IV

1220 S. St. Francis Dr., Santa Fe, NM

87505

OIL CONSERVATION DIVISION
1220 South St. Francis Dr.
Santa Fe, NM 87505

WELL API NO.

30-025-36795

5. Indicate Type of Lease

STATE ☐ FEE ☒

6. State Oil & Gas Lease No.

N/A

7. Lease Name or Unit Agreement Name
Hester 12

8. Well Number #6

9. OGRID Number 00873

10. Pool name or Wildcat
House; Blinebry South, Tubb, DrinkardSUNDRY NOTICES AND REPORTS ON WELLS
(DO NOT USE THIS FORM FOR PROPOSALS TO DRILL OR TO DEEPEN OR PLUG BACK TO A DIFFERENT RESERVOIR. USE "APPLICATION FOR PERMIT" (FORM C-101) FOR SUCH PROPOSALS.)1. Type of Well: Oil Well ☒ Gas Well ☐ Other

2. Name of Operator

Apache Corporation

3. Address of Operator 6120 S Yale Ave, Suite 1500
Tulsa, OK 74136-4224

4. Well Location

Unit Letter N : 467 feet from the South line and 1650 feet from the West line
Section 12 Township 20S Range 38E NMPM County Lea11. Elevation (Show whether DR, RKB, RT, GR, etc.)
3,556' GRPit or Below-grade Tank Application ☐ or Closure ☐

Pit type _____ Depth to Groundwater _____ Distance from nearest fresh water well _____ Distance from nearest surface water _____

Pit Liner Thickness: _____ mil Below-Grade Tank: Volume _____ bbls; Construction Material _____

12. Check Appropriate Box to Indicate Nature of Notice, Report or Other Data

NOTICE OF INTENTION TO:

PERFORM REMEDIAL WORK ☐ PLUG AND ABANDON ☐
TEMPORARILY ABANDON ☐ CHANGE PLANS ☐
PULL OR ALTER CASING ☐ MULTIPLE COMPL ☐OTHER: ☐

SUBSEQUENT REPORT OF:

REMEDIAL WORK ☐ ALTERING CASING ☐
COMMENCE DRILLING OPNS. ☐ P AND A ☐
CASING/CEMENT JOB ☐OTHER:DHC: Blinebry South, Tubb, Drinkard ☒

13. Describe proposed or completed operations. (Clearly state all pertinent details, and give pertinent dates, including estimated date of starting any proposed work). SEE RULE 1103. For Multiple Completions: Attach wellbore diagram of proposed completion or recompletion.

Pursuant to Division Order R-11363

Pool Names: House; Blinebry, South 33225
House; Tubb 78760
House; Drinkard 33250

Perforations:

BLINEBRY 6018'-22', 6080'-84', 6290'-94', 6373'-77' 2 JSPF
TUBB 6500'-02', 6626'-30', 6700'-04', 6782'-86' 2 JSPF
DRINKARD 6975'-79', 6991'-95', 7006'-08' 2 JSPF

The allocation method will be as follows: Test 65 BO X 544 MCF X 65 BW

Blinebry	31 BO	48%	267 MCF	49%	52 BW	80%
Tubb	7 BO	11%	218 MCF	40%	12 BW	18%
Drinkard	27 BO	42%	411 MCF	11%	1 BW	2%
TOTAL	65 BO	100%	544 MCF	100%	65 BW	100%

Downhole commingling will not reduce the value of these pools.

Ownership is the same for each of these pools.

DHC Order No: _____

I hereby certify that the information above is true and complete to the best of my knowledge and belief. I further certify that any pit or below-grade tank has been/will be constructed or closed according to NMOCD guidelines ☐, a general permit ☐ or an (attached) alternative OCD-approved plan ☐.SIGNATURE Sophie Mackay TITLE Engineering Tech DATE 05/30/2006

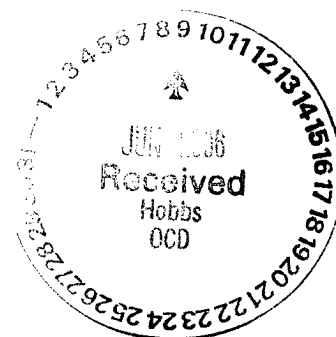
Type or print name Sophie Mackay

E-mail address: sophie.mackay@apachecorp.com Telephone No. (918)491-4864

For State Use Only

APPROVED BY: [Signature] TITLE PETROLEUM ENGINEER DATE JUN 15 2006

Conditions of Approval (if any):



DISTRICT I
1625 N. FRENCH DR., HOBBBS, NM 86240

DISTRICT II
1301 W. GRAND AVENUE, ARTESIA, NM 86210

DISTRICT III
1000 Rio Brazos Rd., Aztec, NM 87410

DISTRICT IV
1220 S. ST. FRANCIS DR., SANTA FE, NM 87505

State of New Mexico
Energy, Minerals and Natural Resources Department

OIL CONSERVATION DIVISION
1220 SOUTH ST. FRANCIS DR.
Santa Fe, New Mexico 87505

Form C-102
Revised JUNE 10, 2003
Submit to Appropriate District Office
State Lease - 4 Copies
Fee Lease - 3 Copies

WELL LOCATION AND ACREAGE DEDICATION PLAT

☐ AMENDED REPORT

API Number 30-025-36795		Pool Code 33225	Pool Name House; Blinby, South
Property Code 34153	Property Name HESTER 12		Well Number 6
OGRID No. 000873	Operator Name APACHE CORPORATION		Elevation 3558'

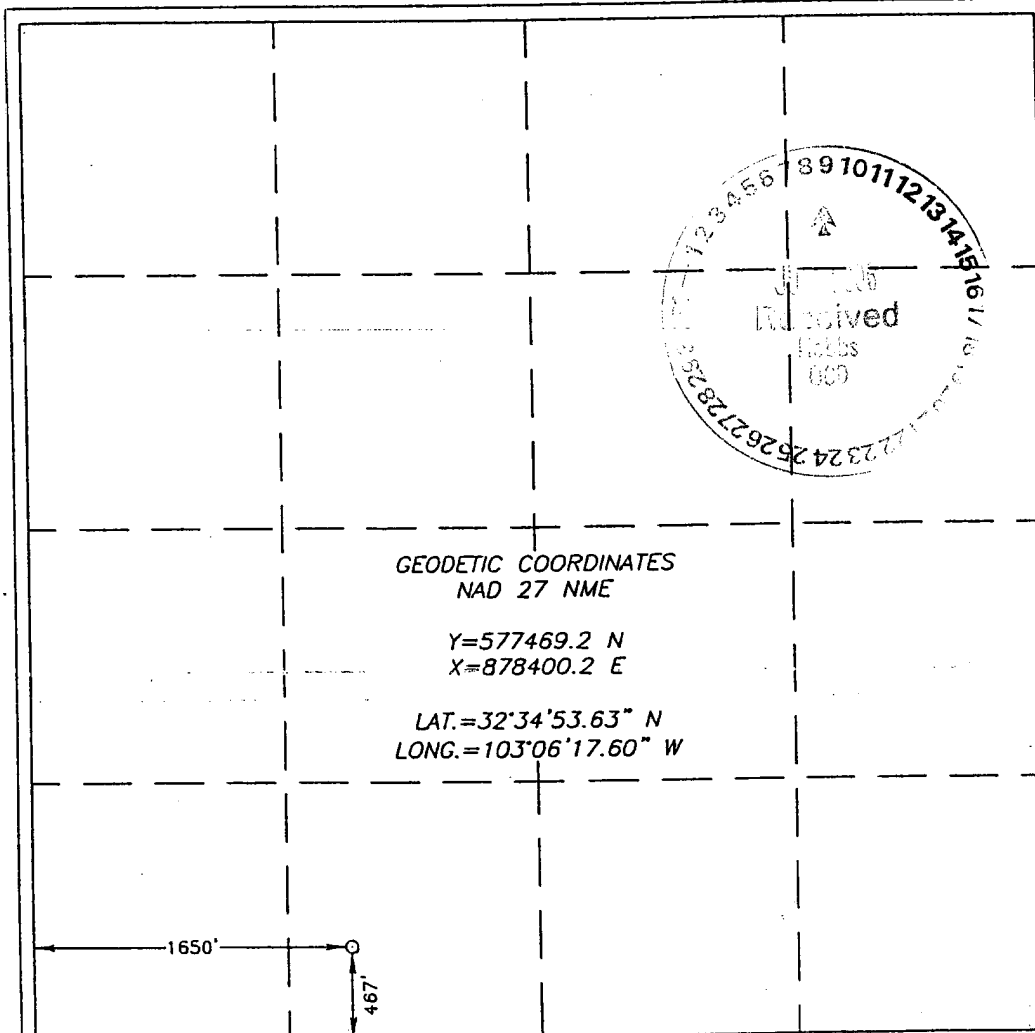
Surface Location

UL or lot No.	Section	Township	Range	Lot Idn	Feet from the	North/South line	Feet from the	East/West line	County
N	12	20-S	38-E		467	SOUTH	1650	WEST	LEA

Bottom Hole Location If Different From Surface

UL or lot No.	Section	Township	Range	Lot Idn	Feet from the	North/South line	Feet from the	East/West line	County
Dedicated Acres		Joint or Infill	Consolidation Code	Order No.					

NO ALLOWABLE WILL BE ASSIGNED TO THIS COMPLETION UNTIL ALL INTERESTS HAVE BEEN CONSOLIDATED
OR A NON-STANDARD UNIT HAS BEEN APPROVED BY THE DIVISION



OPERATOR CERTIFICATION	
I hereby certify the the information contained herein is true and complete to the best of my knowledge and belief.	
Signature: <i>[Signature]</i>	
Printed Name: Veronica S. Carr	
Title: Engineering Tech	
Date: 11/18/05	
SURVEYOR CERTIFICATION	
I hereby certify that the well location shown on this plat was plotted from field notes of actual surveys made by me or under my supervision, and that the same is true and correct to the best of my belief.	
JULY 31, 2004	
Date Surveyed REV:05/23/05 JR	
Signature: <i>[Signature]</i>	
Professional Surveyor	
NEW MEXICO GARY B. ELLISON 05.11.0805308	
Certificate No. GARY B. ELLISON 12841	

DISTRICT I
1625 N. FRENCH DR., HOBBS, NM 88240

State of New Mexico
Energy, Minerals and Natural Resources Department

DISTRICT II
1301 W. GRAND AVENUE, ARTESIA, NM 88210

OIL CONSERVATION DIVISION
1220 SOUTH ST. FRANCIS DR.
Santa Fe, New Mexico 87505

Form C-102
Revised JUNE 10, 2003
Submit to Appropriate District Office
State Lease - 4 Copies
Fee Lease - 3 Copies

DISTRICT III
1000 Rio Brazos Rd., Aztec, NM 87410

DISTRICT IV
1220 S. ST. FRANCIS DR., SANTA FE, NM 87505

WELL LOCATION AND ACREAGE DEDICATION PLAT

☐ AMENDED REPORT

API Number 30-025-36795	Pool Code 78760	Pool Name House, Tubb
Property Code 34153	Property Name HESTER 12	Well Number 6
OGRID No.	Operator Name APACHE CORPORATION	Elevation 3558'

Surface Location

UL or lot No.	Section	Township	Range	Lot Idn	Feet from the	North/South line	Feet from the	East/West line	County
N	12	20-S	38-E		467	SOUTH	1650	WEST	LEA

Bottom Hole Location If Different From Surface

UL or lot No.	Section	Township	Range	Lot Idn	Feet from the	North/South line	Feet from the	East/West line	County
Dedicated Acres	Joint or Infill	Consolidation Code	Order No.						

NO ALLOWABLE WILL BE ASSIGNED TO THIS COMPLETION UNTIL ALL INTERESTS HAVE BEEN CONSOLIDATED
OR A NON-STANDARD UNIT HAS BEEN APPROVED BY THE DIVISION

<p>GEODETIC COORDINATES NAD 27 NME Y=577469.2 N X=878400.2 E LAT.=32°34'53.63" N LONG.=103°06'17.60" W</p> <p>1650'</p> <p>467'</p>	<p>OPERATOR CERTIFICATION</p> <p>I hereby certify that the information contained herein is true and complete to the best of my knowledge and belief.</p> <p> Signature Veronica S. Carr Printed Name Eng. Tech. Title 2/17/2006 Date</p> <p>SURVEYOR CERTIFICATION</p> <p>I hereby certify that the well location shown on this plat was plotted from field notes of actual surveys made by me or under my supervision, and that the same is true and correct to the best of my belief.</p> <p>JULY 31, 2004</p> <p>Date Surveyed: REV 05/23/05 JR Signature of: GARY EIDSON Professional Surveyor NEW MEXICO 5/23/05 05.11.0803 Certification No. GARY EIDSON 12841</p>
---	--

DISTRICT I
1625 N. FRENCH DR., ROSS, NM 88240

DISTRICT II
1301 W. GRAND AVENUE, ARTESIA, NM 88210

DISTRICT III
1000 Rio Brazos Rd., Aztec, NM 87410

DISTRICT IV
1220 S. ST. FRANCIS DR., SANTA FE, NM 87505

State of New Mexico
Energy, Minerals and Natural Resources Department

OIL CONSERVATION DIVISION
1220 SOUTH ST. FRANCIS DR.
Santa Fe, New Mexico 87505

Form C-102
Revised JUNE 10, 2003
Submit to Appropriate District Office
State Lease - 4 Copies
Fee Lease - 3 Copies

WELL LOCATION AND ACREAGE DEDICATION PLAT

☐ AMENDED REPORT

API Number 30-025-36795	Pool Code 33250	Pool Name HOUSE; DRINKARD
Property Code 34153	Property Name HESTER 12	Well Number 6
OGRID No. 00873	Operator Name APACHE CORPORATION	Elevation 3558'

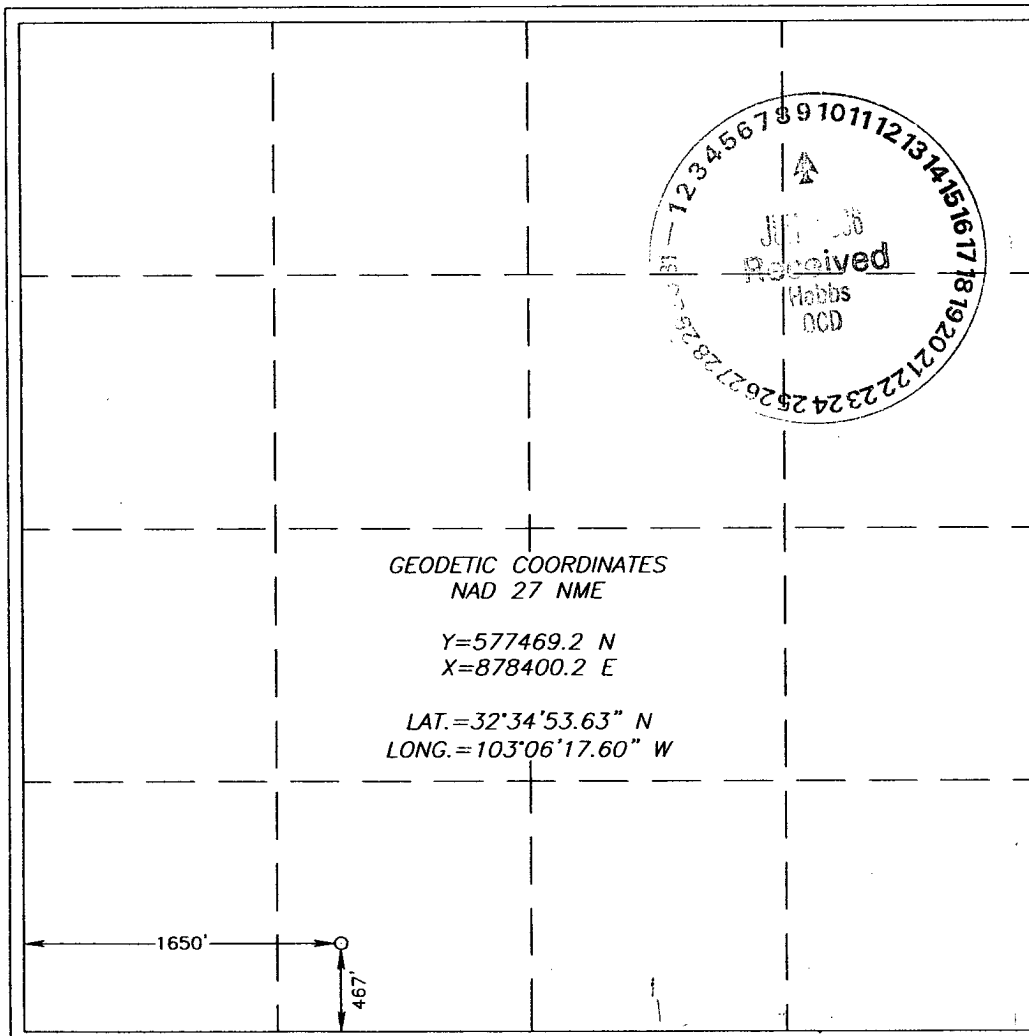
Surface Location

UL or lot No.	Section	Township	Range	Lot Idn	Feet from the	North/South line	Feet from the	East/West line	County
N	12	20-S	38-E		467	SOUTH	1650	WEST	LEA

Bottom Hole Location If Different From Surface

UL or lot No.	Section	Township	Range	Lot Idn	Feet from the	North/South line	Feet from the	East/West line	County
Dedicated Acres	Joint or Infill	Consolidation Code	Order No.						

NO ALLOWABLE WILL BE ASSIGNED TO THIS COMPLETION UNTIL ALL INTERESTS HAVE BEEN CONSOLIDATED
OR A NON-STANDARD UNIT HAS BEEN APPROVED BY THE DIVISION



OPERATOR CERTIFICATION

I hereby certify the the information
contained herein is true and complete to the
best of my knowledge and belief.

Sophie Mackay
Signature

Sophie Mackay
Printed Name

Engineering Tech
Title

5/30/2006
Date

SURVEYOR CERTIFICATION

I hereby certify that the well location shown
on this plat was plotted from field notes of
actual surveys made by me or under my
supervision, and that the same is true and
correct to the best of my belief.

JULY 31, 2004

Date Surveyed REV:05/23/05 JR

Signature & Seal of
Professional Surveyor

Gary Edson
GARY EDSON
0541110803
Certificate No. GARY EDSON 12641