

N.M. Oil Cons. Division

1625 N. French Dr.

Hobbs, NM 88240

FORM APPROVED  
OMB No. 1004-0136  
Expires January 31, 2004

UNITED STATES  
DEPARTMENT OF THE INTERIOR  
BUREAU OF LAND MANAGEMENT

APPLICATION FOR PERMIT TO DRILL OR REENTER

1a. Type of Work: <input checked="" type="checkbox"/> DRILL <input type="checkbox"/> REENTER		5. Lease Serial No. NMNM-106717	
1b. Type of Well: <input type="checkbox"/> Oil Well <input checked="" type="checkbox"/> Gas Well <input type="checkbox"/> Other <input checked="" type="checkbox"/> Single Zone <input type="checkbox"/> Multiple Zone		6. If Indian, Allottee or Tribe Name	
2. Name of Operator Mewbourne Oil Company - 14744		7. If Unit or CA Agreement, Name and No.	
3a. Address PO Box 5270 Hobbs, NM 88240		8. Lease Name and Well No. SF "17" Federal Com #1	
3b. Phone No. (include area code) 505-393-5905		9. API Well No. 30-025-36345	
4. Location of Well (Report location clearly and in accordance with any State requirements. *) At surface 1975' FNL & 1422' FEL At proposed prod. zone <i>G</i>		10. Field and Pool, or Exploratory Lusk Morrow, North	
14. Distance in miles and direction from nearest town or post office* 8 miles SSW from Maljamar, NM		11. Sec., T., R., M., or Blk. and Survey or Area Sec 17-T18S-R32E	
15. Distance from proposed* location to nearest property or lease line, ft. (Also to nearest drig. unit line, if any) 1218'	16. No. of Acres in lease 320	17. Spacing Unit dedicated to this well 320	
18. Distance from proposed location* to nearest well, drilling, completed, applied for, on this lease, ft. 762'	19. Proposed Depth 12,900'	20. BLM/BIA Bond No. on file NM1693, Nationwide	
21. Elevations (Show whether DF, KDB, RT, GL, etc.) 3775'	22. Approximate date work will start* ASAP	23. Estimated duration 45	

24. Attachments

The following, completed in accordance with the requirements of Onshore Oil and Gas Order No.1, shall be attached to this form:

- |   |  |
|---|--|
| 1. Well plat certified by a registered surveyor.  | 4. Bond to cover the operations unless covered by an existing bond on file (see Item 20 above).    |
| 2. A Drilling Plan.   | 5. Operator certification.   |
| 3. A Surface Use Plan (if the location is on National Forest System Lands, the SUPO shall be filed with the appropriate Forest Service Office). | 6. Such other site specific information and/or plans as may be required by the authorized officer. |

25. Signature <i>[Signature]</i>	Name (Printed/Typed) NM Young	Date 06/12/03
Title Hobbs District Manager		
Approved by (Signature) /s/ NOE GONZALEZ	Name (Printed/Typed) /s/ NOE GONZALEZ	Date JUL 25 2003
Title <i>Acting</i> FIELD MANAGER	Office CARLSBAD FIELD OFFICE	

Application approval does not warrant or certify that the applicant holds legal or equitable title to those rights in the subject lease which would entitle the applicant to conduct operations thereon.

Conditions of approval, if any, are attached.

APPROVAL FOR 1 YEAR

Title 18 U.S.C. Section 1001 and Title 43 U.S.C. Section 1212, make it a crime for any person knowingly and willfully to make to any department or agency of the United States any false, fictitious or fraudulent statements or representations as to any matter within its jurisdiction.

\*(Instructions on reverse)

APPROVAL SUBJECT TO  
GENERAL REQUIREMENTS AND  
SPECIAL STIPULATIONS  
ATTACHED

OPER. OGRID NO. 14744  
PROPERTY NO. 32654  
POOL CODE 80800  
EFF. DATE 7-29-03  
API NO. 30-025-36345

## INSTRUCTIONS

**GENERAL:** This form is designed for submitting proposals to perform certain well operations, as indicated on Federal and Indian lands and leases for action by appropriate Federal agencies, pursuant to applicable Federal laws and regulations. Any necessary special instructions concerning the use of this form and the number of copies to be submitted, particularly with regard to local, area, or regional procedures and practices, either are shown below or will be issued by, or may be obtained from local Federal offices.

**ITEM 1:** If the proposal is to redrill to the same reservoir at a different subsurface location or to a new reservoir, use this form with appropriate notations. Consult applicable Federal regulations concerning subsequent work proposals or reports on the well.

**ITEM 4:** Locations on Federal or Indian land should be described in accordance with Federal requirements. Consult local Federal offices for specific instructions.

**ITEM 14:** Needed only when location of well cannot readily be found by road from the land or lease description. A plat, or plats, separate or on this reverse side, showing the roads to, and the surveyed location of, the well, and any other required information, should be furnished when required by Federal agency offices.

**ITEMS 15 AND 18:** If well is to be, or has been directionally drilled, give distances for subsurface location of hole in any present or objective production zone.

**ITEM 22:** Consult applicable Federal regulations, or appropriate officials, concerning approval of the proposal before operations are started.

BLM would like you to know that you do not have to respond to this or any other Federal agency-sponsored information collection unless it displays a currently valid OMB control number.

## NOTICE

The Privacy Act of 1974 and regulation in 43 CFR 2.48(d) provide that you be furnished the following information in connection with information required by this application.

**AUTHORITY:** 30 U.S.C. 181 et seq., 25 U.S.C. 396; 43 CFR 3160

**PRINCIPAL PURPOSES:** The information will be used to: (1) process and evaluate your application for a permit to drill a new oil, gas, or service well or to reenter a plugged and abandoned well; and (2) document, for administrative use, information for the management, disposal and use of National Resource Lands and resources including (a) analyzing your proposal to discover and extract the Federal or Indian resources encountered; (b) reviewing procedures and equipment and the projected impact on the land involved; and (c) evaluating the effects of the proposed operation on the surface and subsurface water and other environmental impacts.

**ROUTINE USE:** Information from the record and/or the record will be transferred to appropriate Federal, State, and local or foreign agencies, when relevant to civil, criminal or regulatory investigations or prosecution, in connection with congressional inquiries and for regulatory responsibilities.

**EFFECT OF NOT PROVIDING INFORMATION:** Filing of this application and disclosure of the information is mandatory only if you elect to initiate a drilling or reentry operation on an oil and gas lease.

JUL 2003  
RECEIVED  
Hobbs  
OCD

## BURDEN HOURS STATEMENT

Public reporting burden for this form is estimated to average 30 minutes per response, including the time for reviewing instructions, gathering and maintaining data, and completing and reviewing the form. Direct comments regarding the burden estimate or any other aspect of this form to U.S. Department of the Interior, Bureau of Land Management (1004-0136), Bureau Clearance Officer, (WO-630) MS 401 LS, 1849 C Street, N.W., Washington, D.C. 20240.

The Paperwork Reduction Act of 1980 (44 U.S.C. 3501 et seq.) requires us to inform you that:

This information is being collected to allow evaluation of the technical, safety, and environmental factors involved with drilling for oil and/or gas on Federal and Indian oil and gas leases.

This information will be used to analyze and approve applications.

Response to this request is mandatory only if the operator elects to initiate drilling or reentry operations on an oil and gas lease.

DISTRICT I  
1625 N. French Dr., Hobbs, NM 88240

DISTRICT II  
811 South First, Artesia, NM 88210

DISTRICT III  
1000 Rio Brazos Rd., Aztec, NM 87410

DISTRICT IV  
2040 South Pacheco, Santa Fe, NM 87505

State of New Mexico  
Energy, Minerals and Natural Resources Department

Form C-102  
Revised March 17, 1999

Submit to Appropriate District Office  
State Lease - 4 Copies  
Fee Lease - 3 Copies

OIL CONSERVATION DIVISION

2040 South Pacheco  
Santa Fe, New Mexico 87504-2088

☐ AMENDED REPORT

WELL LOCATION AND ACREAGE DEDICATION PLAT

API Number <b>30-025-36345</b>	Pool Code <b>80800</b>	Pool Name <b>Lusk, Morrow, North</b>
Property Code <b>32654</b>	Property Name <b>SF "17" FEDERAL COM</b>	Well Number <b>1</b>
OGRID No. <b>1A7A A</b>	Operator Name <b>MEWBOURNE OIL COMPANY</b>	Elevation <b>3775'</b>

Surface Location

UL or lot No.	Section	Township	Range	Lot Idn	Feet from the	North/South line	Feet from the	East/West line	County
<b>G</b>	<b>17</b>	<b>18 S</b>	<b>32 E</b>		<b>1975'</b>	<b>NORTH</b>	<b>1422'</b>	<b>EAST</b>	<b>LEA</b>

Bottom Hole Location If Different From Surface

UL or lot No.	Section	Township	Range	Lot Idn	Feet from the	North/South line	Feet from the	East/West line	County
Dedicated Acres <b>320</b>	Joint or Infill	Consolidation Code	Order No.						

NO ALLOWABLE WILL BE ASSIGNED TO THIS COMPLETION UNTIL ALL INTERESTS HAVE BEEN CONSOLIDATED  
OR A NON-STANDARD UNIT HAS BEEN APPROVED BY THE DIVISION

	<p><b>OPERATOR CERTIFICATION</b></p> <p>I hereby certify that the information contained herein is true and complete to the best of my knowledge and belief.</p> <p>Signature <u>N.M. Young</u></p> <p>Printed Name <u>District Manager</u></p> <p>Title <u>6/12/03</u></p> <p>Date</p>
	<p><b>SURVEYOR CERTIFICATION</b></p> <p>I hereby certify that the well location shown on this plat was plotted from field notes of actual surveys made by me or under my supervision, and that the same is true and correct to the best of my belief.</p> <p>June 6, 2003</p> <p>Date Surveyed</p> <p>Signature &amp; Seal of <u>GARY L. JONES</u> Professional Surveyor</p> <p>Certificate No. <u>3830</u></p> <p>JLP BASIN SURVEYS</p>

**Drilling Program**  
**Mewbourne Oil Company**  
SF "17" Federal Com #1  
1975' FSL & 1422' FEL  
Section 17-T18S-R32E  
Lea County, New Mexico

**1. The estimated top of geological markers are as follows:**

Queen	3860'
San Andres	4250'
Delaware	4670'
Bone Spring	6750'
Wolfcamp	10000'
Strawn	11300'
Morrow	12300'

**2. Estimated depths of anticipated fresh water, oil, or gas:**

Water	Approximately 200'
Hydrocarbons	All zones below Queen

**3. Pressure control equipment:**

A 2000 psi working pressure annular BOP will be installed on the 13-3/8" surface casing. A 5000 psi WP Double Ram BOP and a 3000 psi WP Annular will be installed after running 9 5/8" casing. Pressure tests will be conducted prior to drilling out under all casing strings.

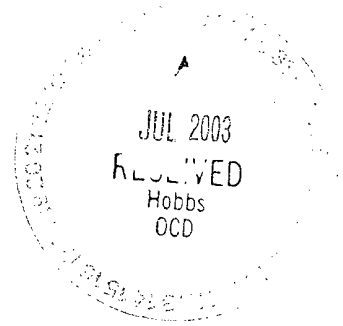
BOP controls will be installed prior to drilling under surface casing and will remain in use until completion of drilling operations. BOP's will be inspected and operated daily to insure mechanical integrity and the inspection will be recorded on the daily drilling report.

Kelly cock and a sub equipped with a full opening valve sized to fit the drill pipe and collars will be available on the rig floor in the open position when the kelly is not in use.

**4. Proposed casing and cementing program:**

**A. Casing Program:**

<u>Hole Size</u>	<u>Casing</u>	<u>Wt/Ft.</u>	<u>Grade</u>	<u>Depth</u>
17-1/2"	13-3/8"	48#	H40	0-500'
12-1/4"	9-5/8"	40#	N80/J55	0-4500'
8-3/4"	5-1/2"	17#	P110/N80	0-13000'



## **Drilling Program**

**Mewbourne Oil Company**

SF "17" Fed Com #1

Page 2

Minimum casing design factors: Collapse 1.125, Burst 1.0, Tensile strength 1.8.

### **B. Cementing Program**

- i. Surface Casing: 300 sacks Class "C" light cement containing ½ #/sk cellophane flakes, 2% CaCl, 5 lbs/sack gilsonite. 200 sacks Class "C" cement containing 2% CaCl.
- ii. Intermediate Casing: 900 sacks 35:65 pozmix cement containing 6% gel, 5 lbs/sack gilsonite. 200 sacks Class "C" cement containing 2% CaCl.
- iii. Production Casing: 600 sacks Class "H" cement containing fluid loss additive, friction reducer additive, compressive strength enhancer, and NaCl. Shallower productive zones may be protected by utilizing a multiple stage cementing tool in the production casing below potentially productive zones and cementing with a light cement slurry.

*\*Mewbourne Oil Company reserves the right to change cement designs as hole conditions may warrant.*

### **5. Mud Program:**

<u>Interval</u>	<u>Type System</u>	<u>Weight</u>	<u>Viscosity</u>	<u>Fluid Loss</u>
0'-500'	FW spud mud	8.6-9.4	32-34	NA
500'-4500'	Brine water	10.0-10.2	28-30	NA
4500'-10700'	Cut brine water	8.8-9.2	28.30	NA
10700'-13000'	Cut brine water	9.2-9.8	32-42	8-12

JUL 2003  
RECEIVED  
Hobbs  
OCD

### **6. Evaluation Program:**

Samples: 10'samples from intermediate casing to TD  
Logging: Compensated density and dual laterlog from intermediate casing to TD  
Coring: As needed for evaluation  
Drill Stem Tests: As needed for evaluation

### **7. Downhole Conditions**

Zones of abnormal pressure: None anticipated  
Zones of lost circulation: Anticipated in surface and intermediate holes  
Maximum bottom hole temperature: 180 degree F  
Maximum bottom hole pressure: 9.0 lbs/gal gradient or less

**Drilling Program**

**Mewbourne Oil Company**

SF "17" Fed Com #1

Page 3

**8. Anticipated Starting Date:**

Mewbourne Oil Company intends to drill this well as soon as possible after receiving approval with approximately 45 days involved in drilling operations and an additional 10 days involved in completion operations on the project.



## **MULTI-POINT SURFACE USE AND OPERATIONS PLAN**

### **MEWBOURNE OIL COMPANY**

SF "17" Federal Com #1

1975' FSL & 1422' FEL

Section 17-T18S-R32E

Lea County, New Mexico

Lease Number NMNM-106717

This plan is submitted with Form 3160-3, Application for Permit to Drill, Covering the above described well. The purpose of this plan is to describe the location of the proposed well, the proposed construction activities and operations plan, the magnitude of the surface disturbance involved, and the procedures to be followed in restoring the surface so that a complete appraisal can be made of the environmental impact associated with the proposed operations.

#### **1. Existing Roads:**

- A. Exhibit #3 is a road map showing the location of the proposed well. Exhibit #3A is a topographic map showing the location of the proposed well and access road. Existing roads are highlighted in yellow and proposed roads are highlighted in green.
- B. **Directions to location: From 62/180, go West on NM 529 approx. 25 miles to CR 126 continue approx. 3 miles. Turn East on lease road approx 50 yards. Turn SE approx 300 yards, turn West and go 100 yards to location.**

#### **2. Proposed Access Road:**

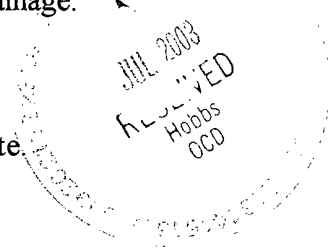
- A. The access road will be built from an existing well pad approximately 300' east of the location pad and will enter the location pad from the southeast corner.
- B. The access to the location will be limited to 16' in width and will adequately drain runoff and control erosion as presently constructed.
- C. Access to location has an existing grade to facilitate adequate drainage.

#### **3. Location of Existing Wells:**

There are no producing wells within the immediate vicinity of the well site.

#### **4. Location of Existing and/or Proposed Facilities:**

- A. There are no production facilities on this lease at the present time.
- B. In the event that the well is productive, production facilities will be located on the well pad.
- C. If the well is productive, restoration plans are as follows:



- i. The reserve pit will be back-filled after the contents of the pit are allowed to dry (within 180 days after the well is completed).
- ii. Within 90 days of cessation of drilling and completion operations, all equipment not necessary for production operations will be removed. The location will be cleaned of all trash and junk to assure the well site is left as aesthetically pleasing as reasonably possible
- iii. All production vessels left on location will be painted to conform with BLM painting stipulations within 180 days of installation.

**5. Location and Type of Water Supply**

The well will be drilled with a combination of fresh water and brine water based mud systems. The water will be obtained from commercial suppliers in the area and hauled to the location by transport trucks over existing and proposed roads as indicated in Exhibit #3.

**6. Source of Construction Materials**

All material required for construction of the drill pad and access roads will be obtained from private, state, or federal pits. The construction contractor will be solely responsible for securing construction materials required for this operation and paying any royalties that may be required on those materials.

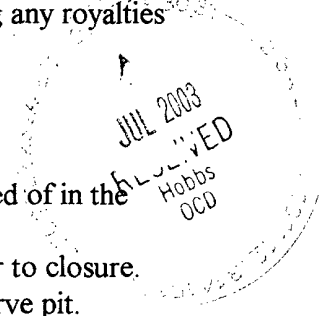
**7. Methods of Handling Waste Disposal:**

- A. Drill cuttings not retained for evaluation purposed will be disposed of in the reserve pit.
- B. Drilling fluids will be allowed to evaporate in the reserve pit prior to closure.
- C. Water produced during operations will be disposed of in the reserve pit.
- D. If any liquid hydrocarbons are produced during operations, those liquids will be stored in suitable tanks until sold.
- E. Current regulations regarding the proper disposal of human waste will be followed.
- F. All trash, junk, and other waste materials will be stored in proper containers to prevent dispersal and will be removed to an appropriate facility within one week of cessation of drilling and completion activities.

**8. Ancillary Facilities**

There are no ancillary facilities within the immediate vicinity of the proposed well site.

**MULTI-POINT SURFACE USE AND OPERATIONS PLAN**





**9. Well Site Layout**

- A. A diagram of the drill pad is shown in Exhibit #5. Dimensions of the pad, pits, and location of major rig components are shown.
- B. The reserve pit will be lined with a high quality plastic sheeting to prevent migration of fluids.
- C. The pad dimension of 400' X 400' has been staked and flagged.
- D. An archaeological survey has been conducted on the proposed access road and location pad.

**10. Plans for Restoration of Surface**

- A. Upon cessation of the proposed operations, if the well is abandoned, the location and road will be ripped and re-seeded per BLM guidelines. The reserve pit area, after allowing to dry will be leveled. The entire location will be restored to the original contour as much as reasonable possible. All trash, garbage, and pit lining will be hauled to appropriate disposal to assure the location is aesthetically pleasing as reasonable possible. All restoration work will be completed within 180 days of cessation of activities.
- B. The disturbed area will be restored by re-seeding during the proper growing season with a mixture of native grasses as stipulated by the BLM.
- C. Three sides of the reserve pit will be fenced prior to and during drilling operations. The reserve pit will be fenced on the fourth side after the drilling rig is removed to prevent the endangerment of livestock. The fence will remain in place until the pit area has been leveled and restored.
- D. Upon cessation of the proposed operations, if the well is not abandoned, the reserve pit area will be treated as outlined above within the prescribed amount of time. Any additional caliche required for production facilities will be obtained from a source as described in Section 6.

**11. Surface Ownership:**

The surface is owned by: Bureau of Land Management

**12. Other Information**

- A. Topography: Refer to the archaeological report for a detailed description of flora, fauna, soil characteristics, dwellings, and historical or cultural sites.
- B. The primary use of the surface at the location is for grazing of livestock.



**MULTI-POINT SURFACE USE AND OPERATIONS PLAN**

**MEWBOURNE OIL COMPANY**

SF "17" Federal Com #1

Page 4

**13. Operator's Representative:**

A. Through APD approval and drilling operations:

**Mickey Young, District Manager**  
Mewbourne Oil Company  
PO Box 5270  
Hobbs, NM 88241  
505-393-5905

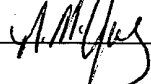
B. Through completion and production operations:

**Mickey Young, District Manager**  
Mewbourne Oil Company  
PO Box 5270  
Hobbs, NM 88241  
505-393-5905

**14. Certification**

I hereby certify that I, or persons under my direct supervision, have inspected the proposed drill site and access route; that I am familiar with the conditions which currently exist; that the statements made in this plan are to the best of my knowledge, true and correct; and the work associated with the operations proposed herein will be performed by Mewbourne Oil Company, its contractors and subcontractors, in accordance with this plan and the terms and conditions under which it is approved. This statement is subject to the provisions of 18 U.S.C. 1001 for the filing of a false statement.

Date: 6/12/03

Signature: 

Mickey Young, District Manager  
Mewbourne Oil Company  
PO Box 5270  
Hobbs, NM 88241  
(505) 393-5905



# Mewbourne Oil Company

BOP Schematic for

12 1/4" Hole

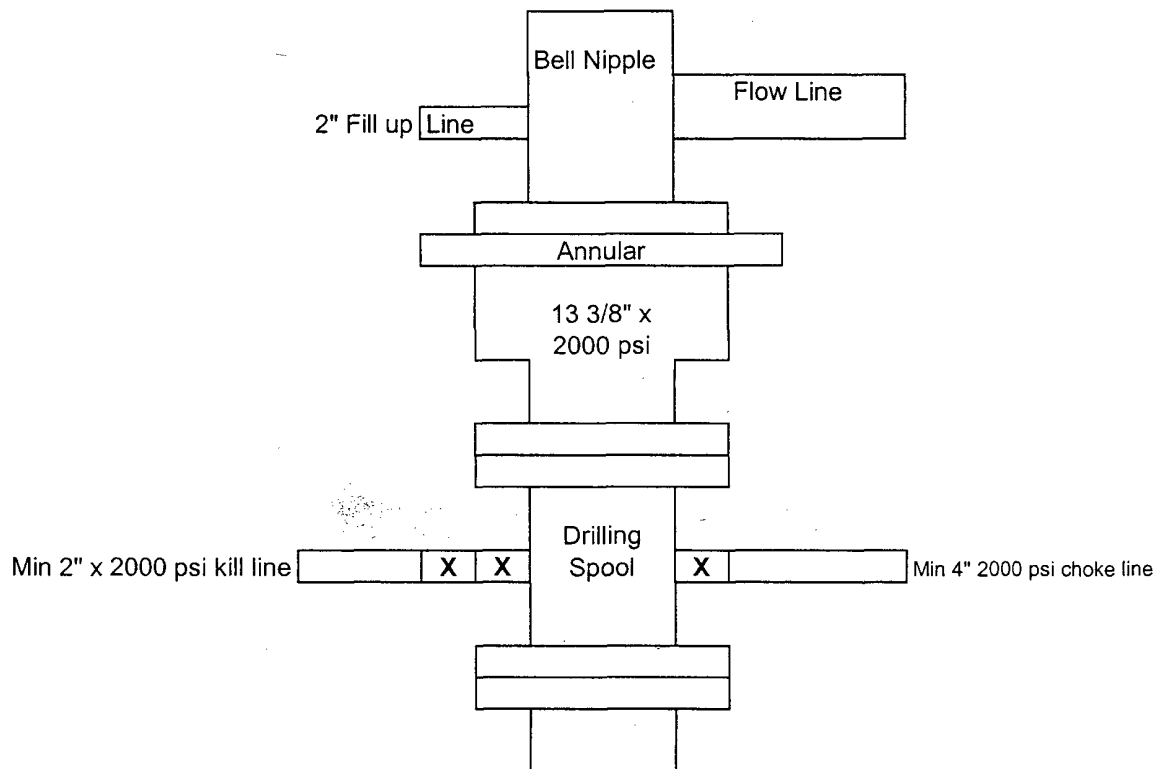
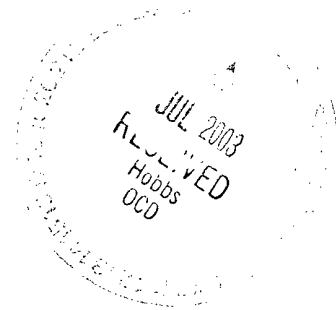


Exhibit #2

SF "17" Federal Com #1  
1975' FNL & 1422' FEL  
Sec 17 T-18S R-32E  
Lea, County New Mexico



# Mewbourne Oil Company

BOP Schematic for  
8 3/4" or 7 7/8" Hole

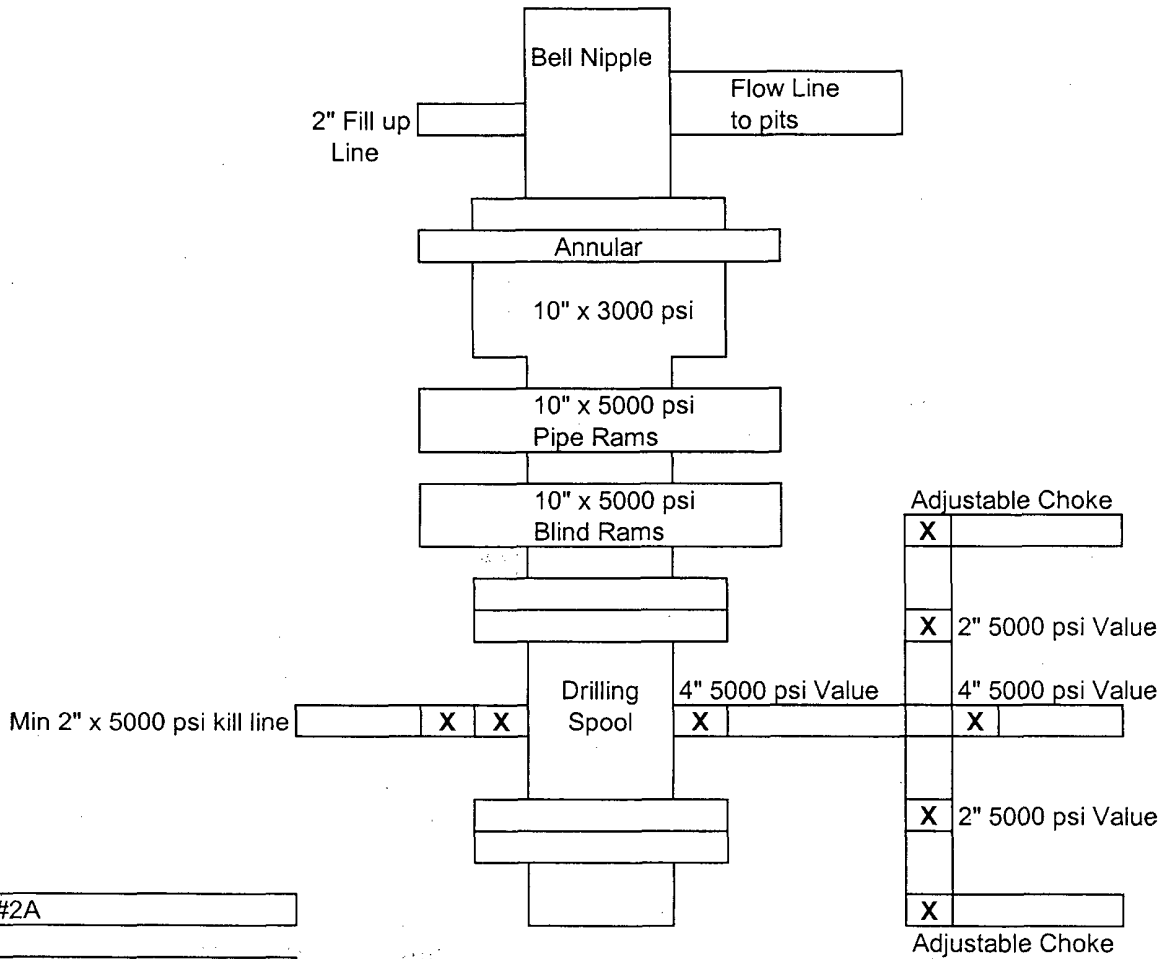


Exhibit #2A

SF "17" Federal Com #1  
1975' FNL & 1422' FEL  
Sec 17 T-18S R-32E  
Lea, County New Mexico



**Notes Regarding Blowout Preventer**

**Mewbourne Oil Company**

SF "17" Federal Com #1

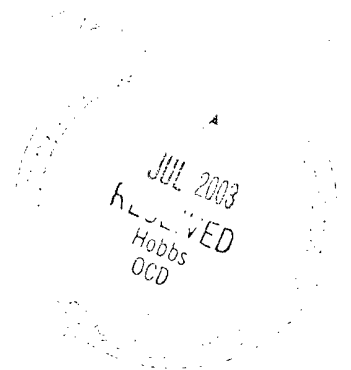
1975' FSL & 1422' FEL

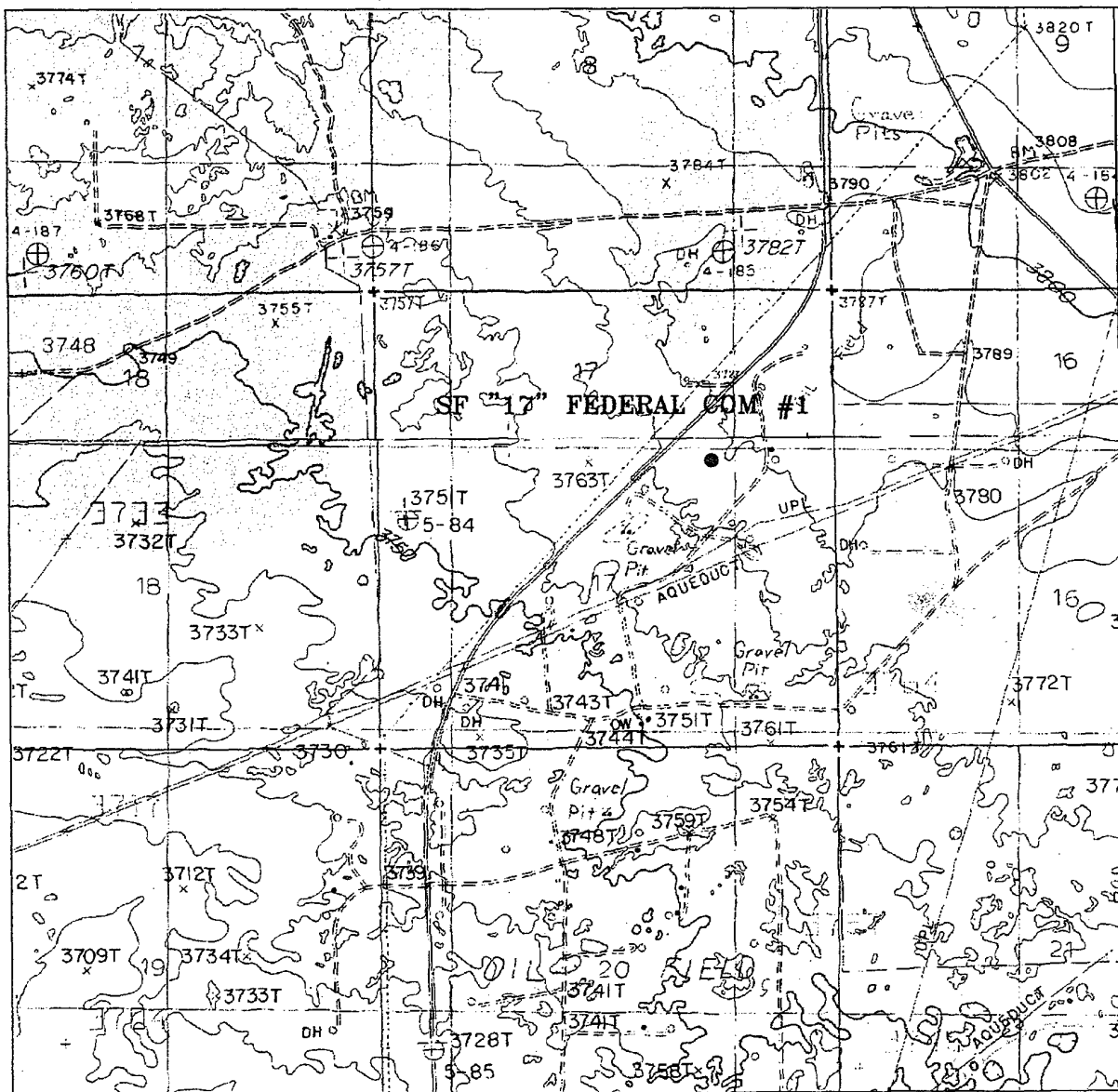
Section 17-T18S-R32E

Lea County, New Mexico

Lease Number NMNM-106717

1. Drilling nipple (bell nipple) to be constructed so that it can be removed without the use of a welder through the opening of the rotary table, with minimum internal diameter equal to blowout preventer bore.
2. Blowout preventer and all fittings must be in good condition with a minimum 5000 psi working pressure.
3. Safety valve must be available on the rig floor at all times with proper connections to install in the drill string. Valve must be full bore with minimum 5000 psi working pressure.
4. Equipment through which bit must pass shall be at least as large as internal diameter of the casing.
5. A kelly cock shall be installed on the kelly at all times.
6. Blowout preventer closing equipment to include and accumulator of at least 40 gallon capacity, two independent sources of pressure on closing unit, and meet all other API specifications.





### SF "17" FEDERAL COM #1

Located at 1975' FNL and 1422' FEL  
 Section 17, Township 18 South, Range 32 East,  
 N.M.P.M., Lea County, New Mexico.

JUL 2003  
 RECEIVED  
 Hobbs  
 OGD

**basin**  
**surveys**  
 focused on excellence  
 in the oilfield

P.O. Box 1786  
 1120 N. West County Rd.  
 Hobbs, New Mexico 88241  
 (505) 393-7316 - Office  
 (505) 392-3074 - Fax  
 basinsurveys.com

W.O. Number: 3330AA - JLP #1

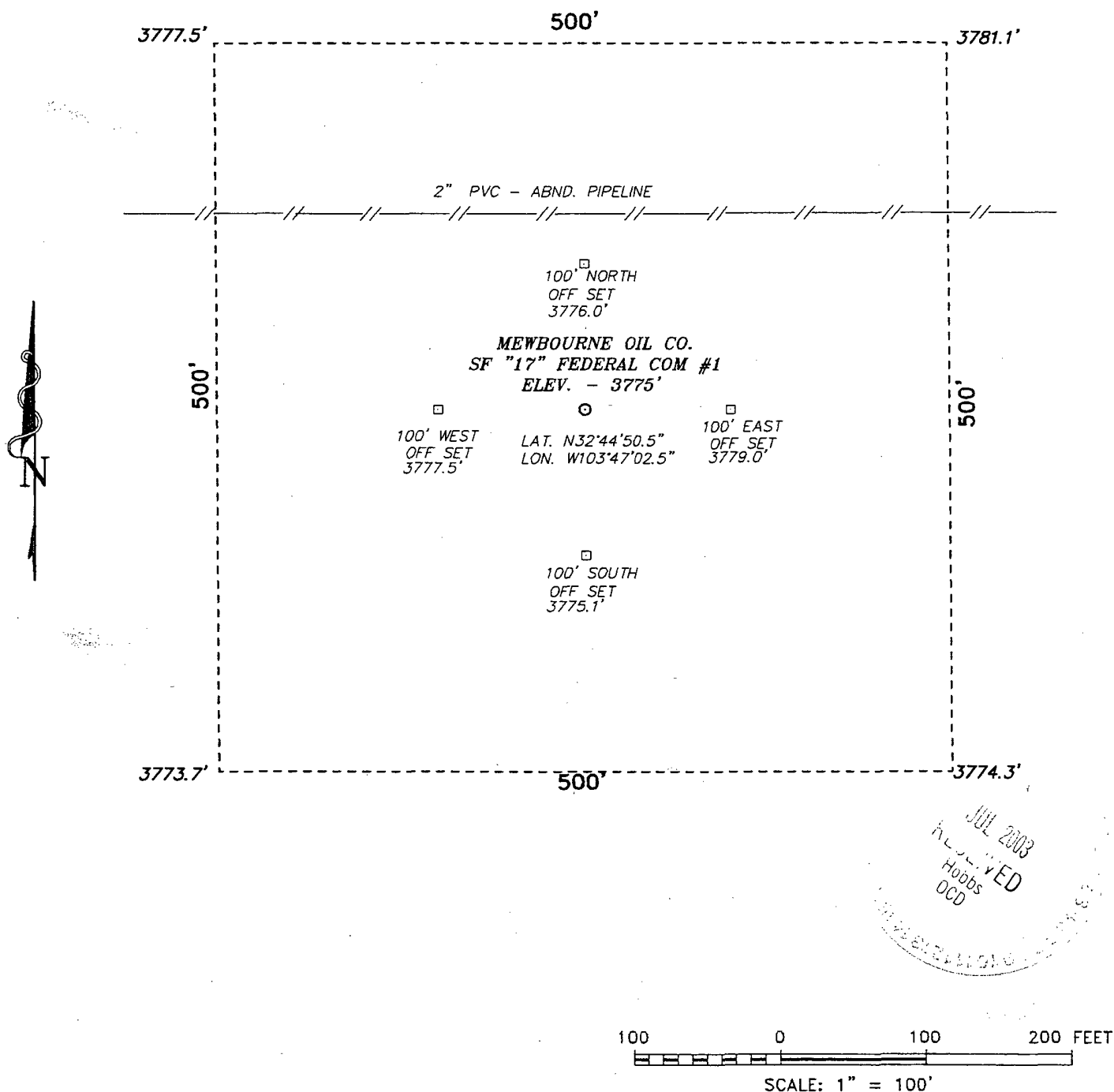
Survey Date: 06/05/03

Scale: 1" = 2000'

Date: 06/09/03

**MEWBOURNE**  
**OIL**  
**COMPANY**

SECTION 17, TOWNSHIP 18 SOUTH, RANGE 32 EAST, N.M.P.M.,  
LEA COUNTY, NEW MEXICO.



FROM THE INTERSECTION OF STATE HWY. 529 AND  
LEA COUNTY RD. L-126 GO SOUTH ON 126 APPROX.  
3.1 MILES THE LOCATION IS APPROX 300' EAST OF ROAD

## MEWBOURNE OIL COMPANY

REF: SF "17" FEDERAL COM. #1 / Well Pad Topo

SF "17" FEDERAL COM #1 LOCATED 1975' FROM THE  
NORTH LINE AND 1422' FROM THE EAST LINE OF  
SECTION 17, TOWNSHIP 18 SOUTH, RANGE 32 EAST,  
N.M.P.M., LEA COUNTY, NEW MEXICO.

**BASIN SURVEYS** P.O. BOX 1786-HOBBS, NEW MEXICO

W.O. Number: 3330

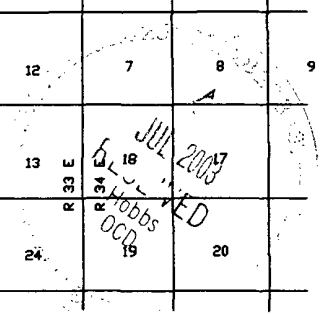
Drawn By: JAMES PRESLEY

Date: 06/09/03

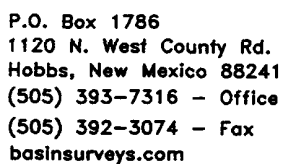
Disk: JLP #1 - 3330A

Survey Date: 06/06/03

Sheet 1 of 1 Sheets



MEWBOURNE  
OIL  
COMPANY



Date: 06/09/03



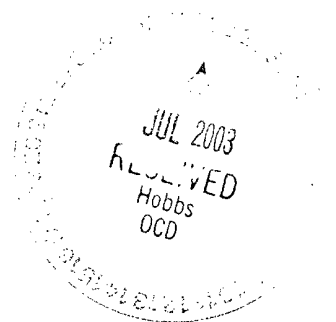
**Exhibit #4**  
**Status of Wells in Immediate Vicinity**

**Mewbourne Oil Company**

SF "17" Federal Com #1  
1975' FSL & 1422' FEL  
Section 17-T18S-R32E  
Lea County, New Mexico  
Lease #NMNM 106717

**Section 17-T18S-R32E**

No production in immediate area. Several P&A wells.



**Hydrogen Sulfide Drilling Operations Plan**  
**Mewbourne Oil Company**  
SF "17" Federal Com #1  
1975' FSL & 1422' FEL  
Section 17-T18S-R32E  
Lea County, New Mexico  
Lease Number NMNM-106717, NMNM-106717

**1. Hydrogen Sulfide Training**

All personnel, whether regularly assigned, contracted, or employed on an unscheduled basis, will have received training from a qualified instructor in the following areas prior to entering the drilling pad area of the well:

- 1 The hazards and characteristics of hydrogen sulfide gas.
- 2 The proper use of personal protective equipment and life support systems.
- 3 The proper use of hydrogen sulfide detectors, alarms, warning systems, briefing areas, evacuation procedures.
- 4 The proper techniques for first aid and rescue operations.

Additionally, supervisory personnel will be trained in the following areas:

- 1 The effects of hydrogen sulfide on metal components. If high tensile tubular systems are utilized, supervisory personnel will be trained in their special maintenance requirements.
- 2 Corrective action and shut in procedures, blowout prevention, and well control procedures while drilling a well.
- 3 The contents of the Hydrogen Sulfide Drilling Operations Plan.

There will be an initial training session prior to encountering a known hydrogen sulfide source. The initial training session shall include a review of the site specific Hydrogen Sulfide Drilling Operations Plan.

**2. Hydrogen Sulfide Safety Equipment and Systems**

All hydrogen sulfide safety equipment and systems will be installed, tested, and operational prior to drilling below the intermediate casing.

**A. Well Control Equipment**

- A. Flare line with automatic igniter or continuous ignition source.
- B. Choke manifold with minimum of one adjustable choke.
- C. Blowout preventers equipped with blind rams and pipe rams to accommodate all pipe sizes with properly sized closing unit
- D. Auxiliary equipment including rotating head and annular type blowout preventer.

JUL 2003  
RECEIVED  
Hobbs  
OCD

B. Protective Equipment for Essential Personnel

Thirty minute self contained work unit located at briefing area as indicated on well site diagram.

C. Hydrogen Sulfide Protection and Monitoring Equipment

Two portable hydrogen sulfide monitors positioned on location for optimum coverage and detection. The units shall have audible sirens to notify personnel when hydrogen sulfide levels exceed 20 ppm.

D. Visual Warning Systems

- A. Wind direction indicators as indicated on the well site diagram.
- B. Caution signs shall be posted on roads providing access to location. Signs shall be painted a high visibility color with lettering of sufficient size to be readable at reasonable distances from potentially contaminated areas.

3. **Mud Program**

The mud program has been designed to minimize the amount of hydrogen sulfide entrained in the mud system. Proper mud weight, safe drilling practices, and the use of hydrogen sulfide scavengers will minimize hazards while drilling the well.

4. **Metallurgy**

All tubular systems, wellheads, blowout preventers, drilling spools, kill lines, choke manifolds, and valves shall be suitable for service in a hydrogen sulfide environment when chemically treated.

5. **Communications**

Communications in company vehicles and tool pushers are either two way radios or cellular phones.

6. **Well Testing**

Drill stem testing is not an anticipated requirement for evaluation of this well. A drill stem test is required, it will be conducted with a minimum number of personnel in the immediate vicinity. The test will be conducted during daylight hours only.

RECEIVED  
JUL 2003  
Hobbs  
OCD

**United States Department of the Interior  
Bureau of Land Management  
Roswell Field Office  
2909 West Second Street  
Roswell, New Mexico 88201-1287**

**Statement Accepting Responsibility for Operations**

Operator Name: Mewbourne Oil Company  
Street or Box: P.O. Box 5270  
City, State: Hobbs, New Mexico  
Zip Code: 88241

The undersigned accepts all applicable terms, conditions, stipulations, and restrictions concerning operations conducted of the leased land or portion thereof, as described below.

Lease Number: Lease Number NMNM-106717, NMNM-106717

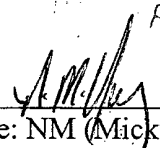
Legal Description of Land: Section 17, T18S, R32E, Lea County, New Mexico. Location 1975' FNL & 1422' FEL of Section 17.

Formation (if applicable):

Bond Coverage: \$150,000

BLM Bond File: NM1693, Nationwide

Authorized Signature: \_\_\_\_\_

  
Name: NM (Micky) Young  
Title: District Manager  
Date: June 10, 2003

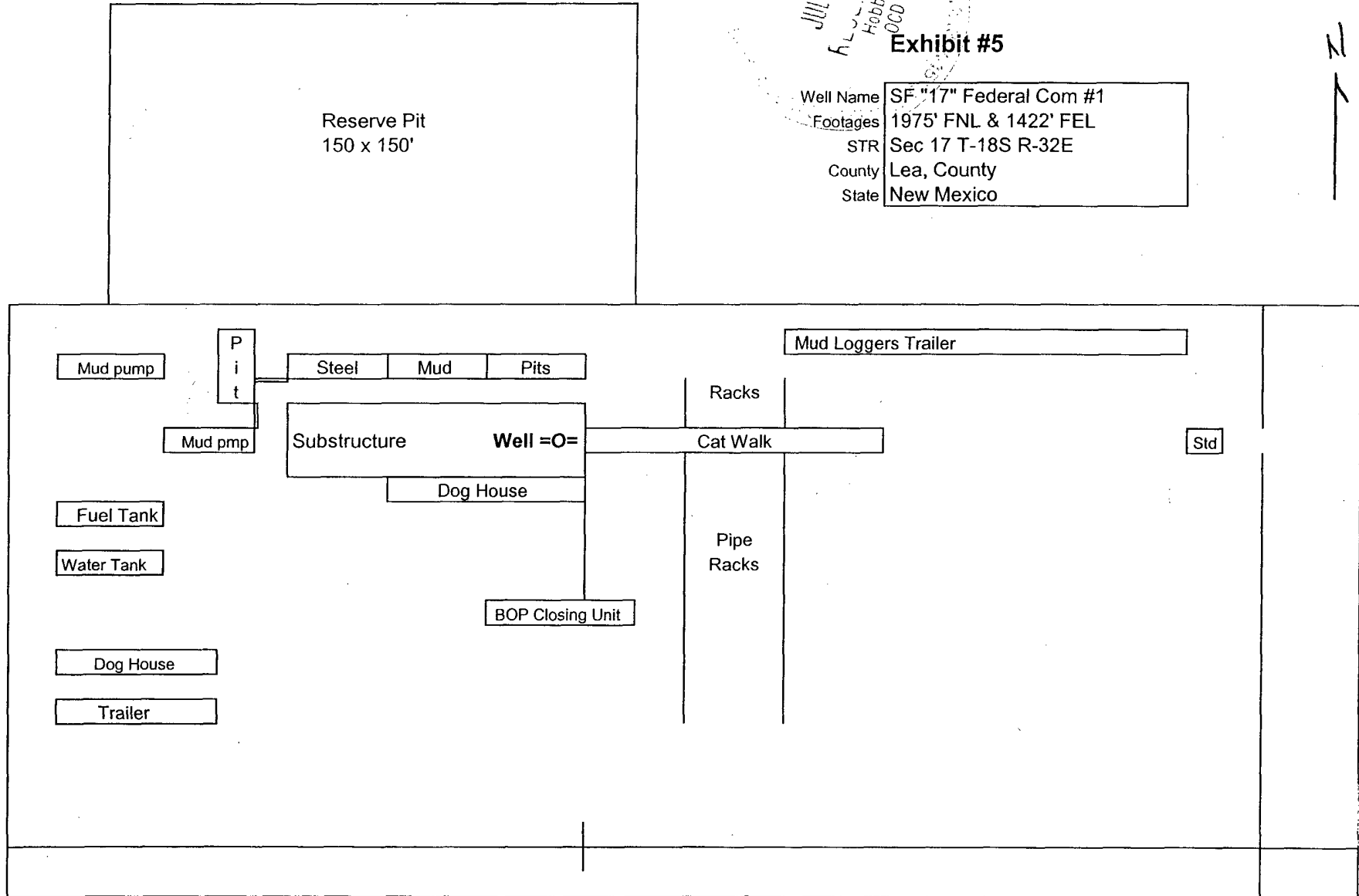
JUL 2003  
RECEIVED  
Hobbs  
OCD

# Mewbourne Oil Company

JUL 2003  
 RECEIVED  
 Hobbs  
 OGD

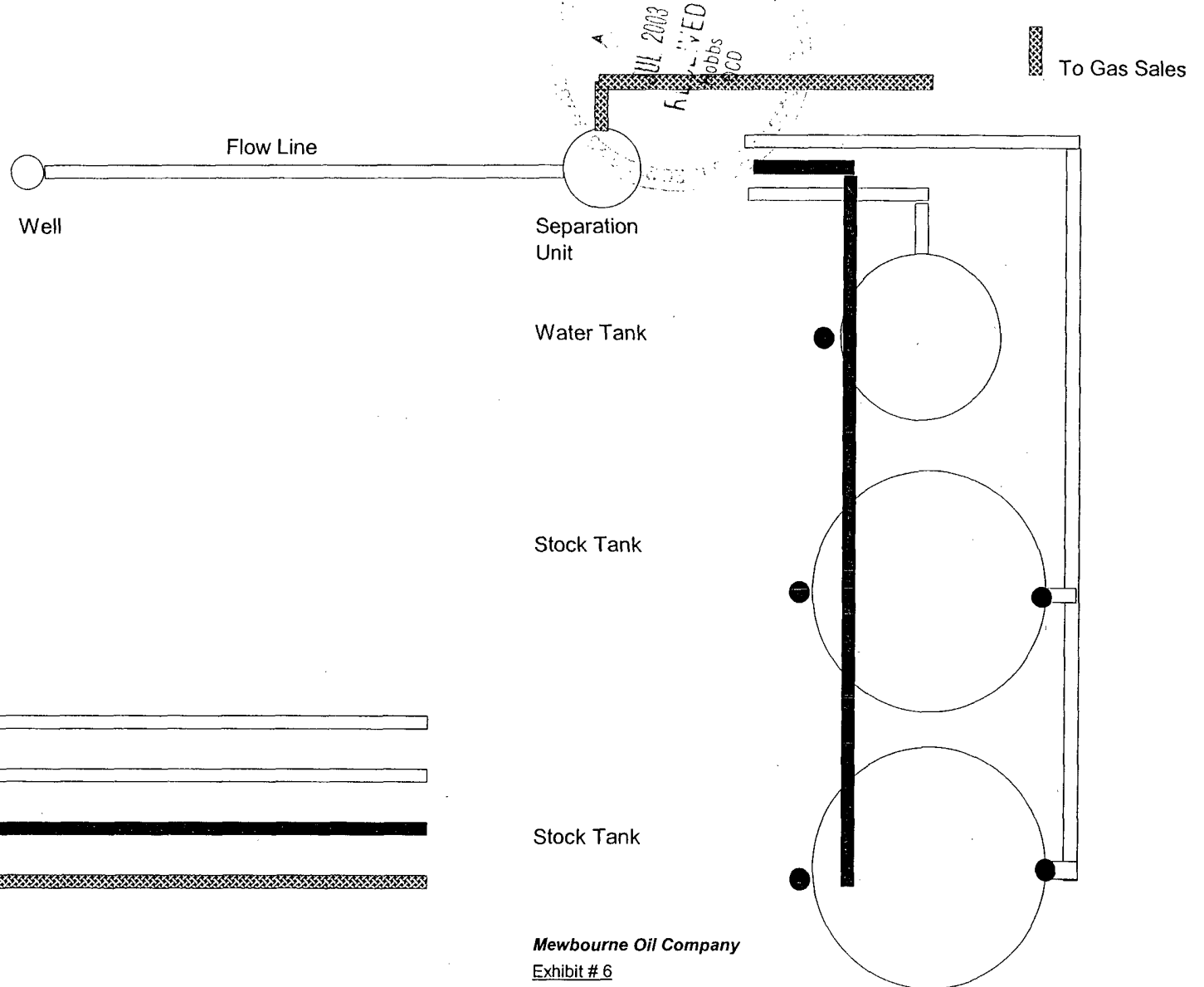
## Exhibit #5

Well Name	SF "17" Federal Com #1
Footages	1975' FNL & 1422' FEL
STR	Sec 17 T-18S R-32E
County	Lea, County
State	New Mexico



Rig Location Schematic

# Proposed Production Facilities Schematic



Mewbourne Oil Company

Exhibit # 6

Proposed Production Facilities Schematic

SF "17" Federal Com #1

1975' FNL & 1422' FEL

Sec 17.T-18S R-32E

Lea, County New Mexico