

District I
1625 N. French Dr., Hobbs, NM 88240
District II
1301 W. Grand Avenue, Artesia, NM 88210
District III
1000 Rio Brazos Road, Aztec, NM 87410
District IV
1220 S. St. Francis Dr., Santa Fe, NM 87505

State of New Mexico
Energy Minerals and Natural Resources

Form C-101
May 27, 2004

Oil Conservation Division
1220 South St. Francis Dr.
Santa Fe, NM 87505

Submit to appropriate District Office

☐ AMENDED REPORT

APPLICATION FOR PERMIT TO DRILL, RE-ENTER, DEEPEN, PLUGBACK, OR ADD A ZONE

¹ Operator Name and Address Plantation Operating, LLC 2203 Timberloch Place, Suite 229, The Woodlands, Texas 77380		² OGRID Number 237788
		³ API Number 30-025-37959
³ Property Code 302113	⁵ Property Name Martin B	⁶ Well No. 3
⁹ Proposed Pool 1 Jalmat (Gas)		¹⁰ Proposed Pool 2

7 Surface Location

UL or lot no.	Section	Township	Range	Lot Idn	Feet from the	North/South line	Feet from the	East/West line	County
C	31	24S	37E		660'	North	1917'	West	Lea

8 Proposed Bottom Hole Location If Different From Surface

UL or lot no.	Section	Township	Range	Lot Idn	Feet from the	North/South line	Feet from the	East/West line	County

Additional Well Information

¹¹ Work Type Code N	¹² Well Type Code G	¹³ Cable/Rotary R	¹⁴ Lease Type Code P	¹⁵ Ground Level Elevation 3248'
¹⁶ Multiple No	¹⁷ Proposed Depth 3650'	¹⁸ Formation Yates - 7 Rivers	¹⁹ Contractor To Be Determined	²⁰ Spud Date ASAP
Depth to Groundwater 70'		Distance from nearest fresh water well > 1,000'		Distance from nearest surface water > 1,000'
Pit: Liner: Synthetic <input checked="" type="checkbox"/> 12 mils thick Clay <input type="checkbox"/> Pit Volume: 8900 bbls Drilling Method: Drilling Closed-Loop System <input type="checkbox"/> Fresh Water <input type="checkbox"/> Brine <input checked="" type="checkbox"/> Diesel/Oil-based <input type="checkbox"/> Gas/Air <input type="checkbox"/>				

21 Proposed Casing and Cement Program

Hole Size	Casing Size	Casing weight/foot	Setting Depth	Sacks of Cement	Estimated TOC
12 1/4"	8 5/8"	24#	450'	350	Surface
7 7/8"	5 1/2"	17#	3650'	750	Surface

22 Describe the proposed program. If this application is to DEEPEN or PLUG BACK, give the data on the present productive zone and proposed new productive zone. Describe the blowout prevention program, if any. Use additional sheets if necessary.

Before drilling out from surface pipe, the well will be equipped with a 3000-psi 10-inch Series-900 double-ram hydraulic BOP and Hydril and surface pipe and BOP system will be tested to a minimum pressure of 1500 psig. Cement volumes may be adjusted to insure that the cement behind both the 8-5/8" and 5-1/2" casing strings will be circulated in sufficient volumes to the surface.

Permit Expires 1 Year From Approval
Date Unless Drilling Underway

23 I hereby certify that the information given above is true and complete to the best of my knowledge and belief. I further certify that the drilling pit will be constructed according to NMOCD guidelines ☒, a general permit ☐, or an (attached) alternative OCD-approved plan ☐.

Printed name: Donald P. Dotson, P.E.

Title: COO

E-mail Address: ddotson@plantationpetro.com

Date: 3/28/2006

Phone: 281-296-7222

OIL CONSERVATION DIVISION

Approved by:

Title:

Approval Date:

JUN 23 2006

Expiration Date:

PETROLEUM ENGINEER

Conditions of Approval Attached ☐

State of New Mexico

DISTRICT I

1625 N. FRENCH DR., HOBBBS, NM 88240

Energy, Minerals and Natural Resources Department

Form C-102

DISTRICT II

1301 W. GRAND AVENUE, ARTESIA, NM 88210

OIL CONSERVATION DIVISION

1220 SOUTH ST. FRANCIS DR.
Santa Fe, New Mexico 87505

Revised October 12, 2005
Submit to Appropriate District Office
State Lease - 4 Copies
Fee Lease - 3 Copies

DISTRICT III

1000 Rio Brazos Rd., Aztec, NM 87410

DISTRICT IV

1220 S. ST. FRANCIS DR., SANTA FE, NM 87505

WELL LOCATION AND ACREAGE DEDICATION PLAT

☐ AMENDED REPORT

API Number 30-025-37959	Pool Code 79240	Pool Name Jalmar Tansill Yates Seven River (GAS)
Property Code 302113	Property Name MARTIN B	Well Number 3
OGRID No. 237788	Operator Name PLANTATION OPERATING, LLC	Elevation 3250'

Surface Location

UL or lot No.	Section	Township	Range	Lot Idn	Feet from the	North/South line	Feet from the	East/West line	County
C	31	24-S	37-E		660	NORTH	1917	WEST	LEA

Bottom Hole Location If Different From Surface

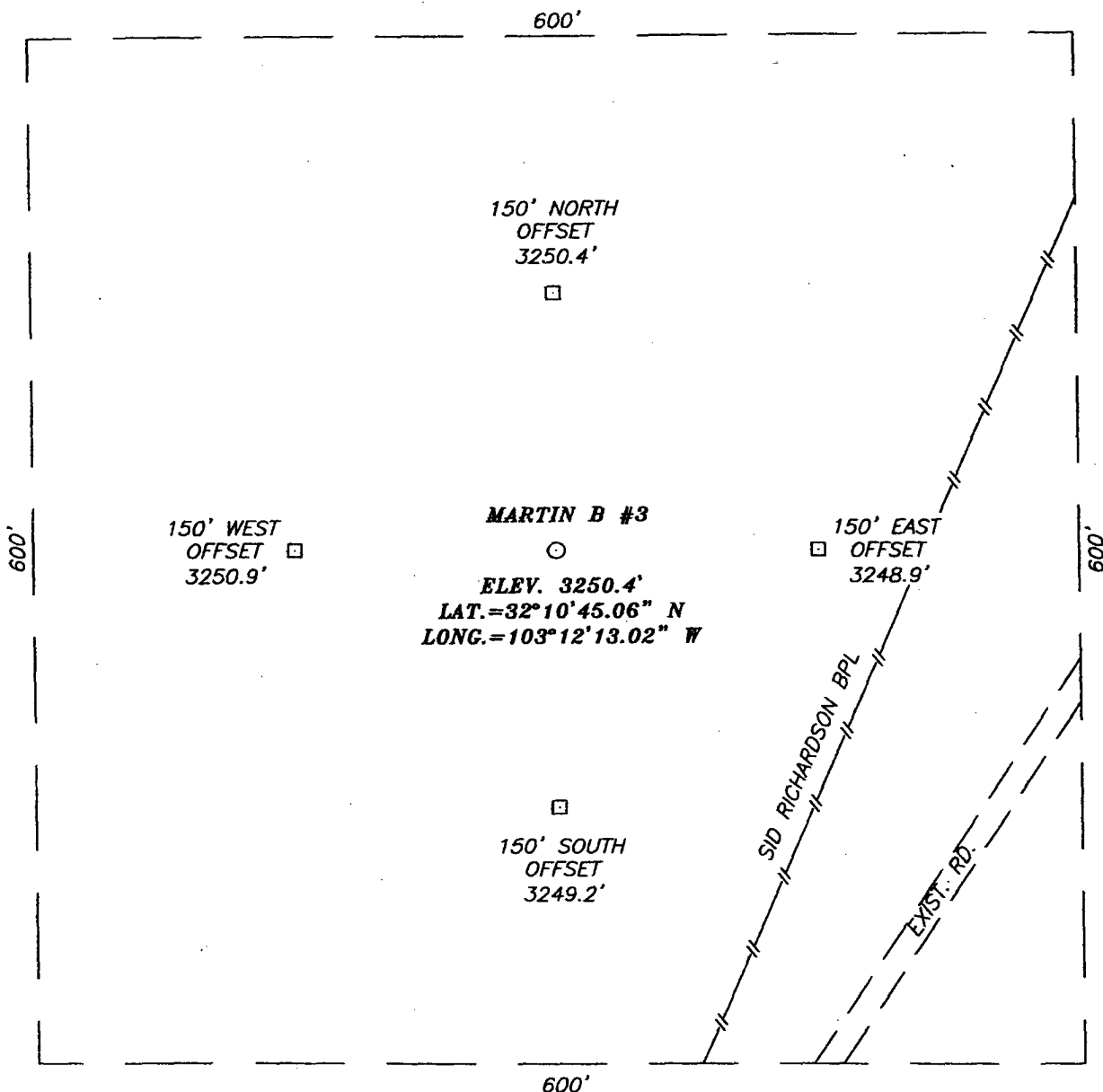
UL or lot No.	Section	Township	Range	Lot Idn	Feet from the	North/South line	Feet from the	East/West line	County

Dedicated Acres	Joint or Infill	Consolidation Code	Order No.
156.19			SO-06-16

NO ALLOWABLE WILL BE ASSIGNED TO THIS COMPLETION UNTIL ALL INTERESTS HAVE BEEN CONSOLIDATED
OR A NON-STANDARD UNIT HAS BEEN APPROVED BY THE DIVISION

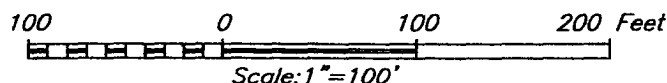
	<h3>OPERATOR CERTIFICATION</h3> <p>I hereby certify that the information herein is true and complete to the best of my knowledge and belief, and that this organization either owns a working interest or unleased mineral interest in the land including the proposed bottom hole location or has a right to drill this well at this location pursuant to a contract with an owner of such mineral or working interest, or to a voluntary pooling agreement or a compulsory pooling order heretofore entered by the division.</p> <p><i>[Signature]</i> 3/29/06 Signature Date JOHN ALLRED Printed Name</p> <hr/> <h3>SURVEYOR CERTIFICATION</h3> <p>I hereby certify that the well location shown on this plat was plotted from field notes of actual surveys made by me or under my supervision, and that the same is true and correct to the best of my belief.</p> <p>MARCH 27, 2006</p> <p>Date Surveyed MR Signature & Seal of Professional Surveyor <i>[Signature]</i> 3/29/06 06.11.0544 Certificate No. GARY EDSON 12641</p>
--	--------------------------------------------------------------------------------------------------------------------------------------------------------------------------------------------------------------------------------------------------------------------------------------------------------------------------------------------------------------------------------------------------------------------------------------------------------------------------------------------------------------------------------------------------------------------------------------------------------------------------------------------------------------------------------------------------------------------------------------------------------------------------------------------------------------------------------------------------------------------------------------------------------------------------------------------------------------------------------------------------------------------------------------------------------------------------------------------------------------------------------

SECTION 31, TOWNSHIP 24 SOUTH, RANGE 37 EAST, N.M.P.M.,
 LEA COUNTY, NEW MEXICO



DIRECTIONS TO LOCATION

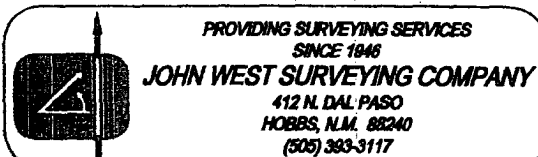
FROM THE INTERSECTION OF ST. HWY 18 AND
 (COOPER CEMETARY RD.), GO SOUTH ON ST. HWY
 18 APPROX. 2.0 MILES. TURN RIGHT (THROUGH
 CATTLE GUARD) AND GO EAST APPROX. 0.4 MILES.
 VEER LEFT AND GO SOUTHWEST APPROX. 0.3
 MILES. THIS LOCATION IS APPROX. 300 FEET
 NORTHWEST.



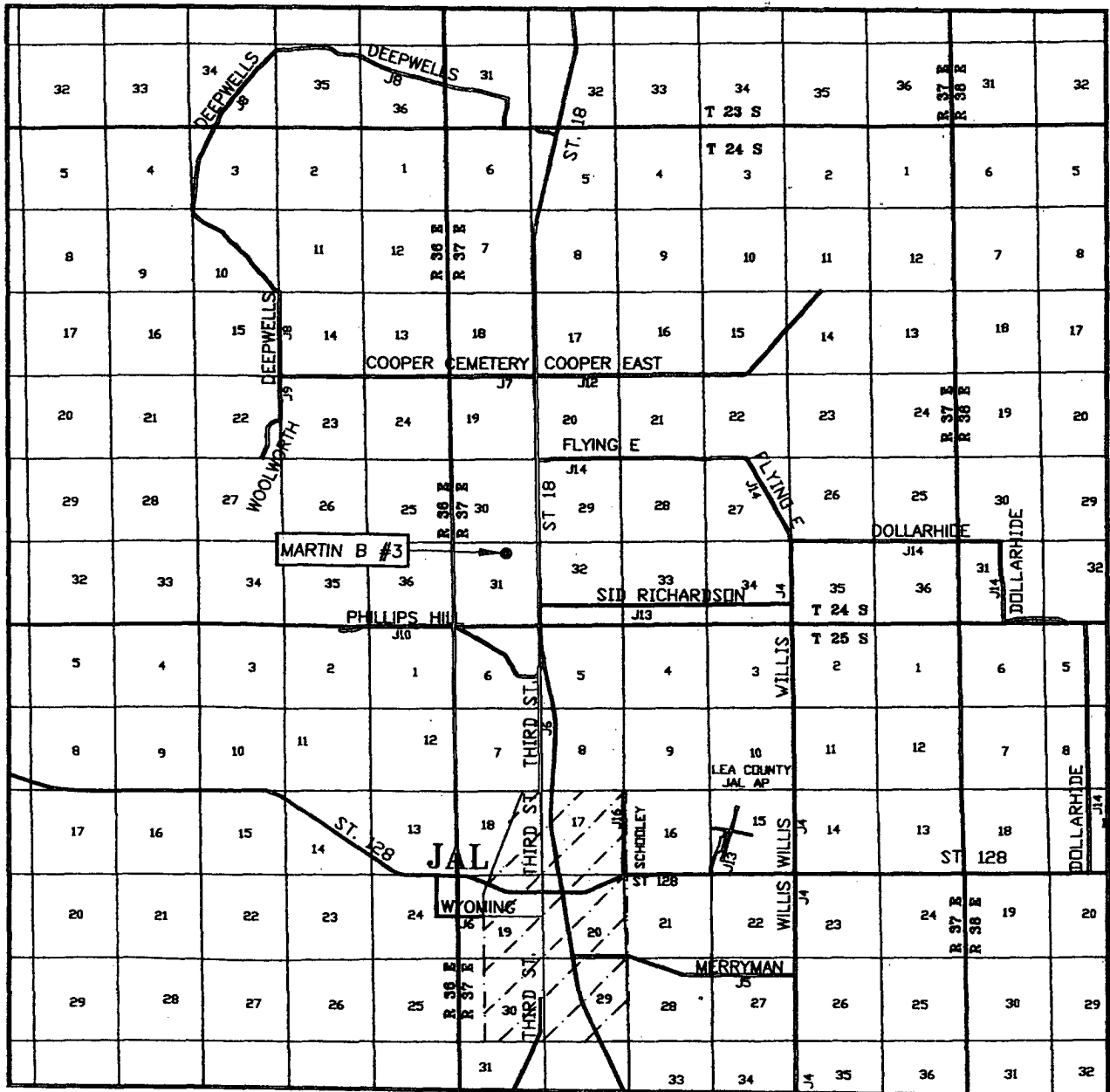
PLANTATION OPERATING, LLC

MARTIN B #3
 LOCATED 660 FEET FROM THE NORTH LINE
 AND 1917 FEET FROM THE WEST LINE OF SECTION 31,
 TOWNSHIP 24 SOUTH, RANGE 37 EAST, N.M.P.M.,
 LEA COUNTY, NEW MEXICO.

Survey Date: 03/27/06	Sheet 1 of 1 Sheets
W.O. Number: 06.11.0544	Dr By: M.R. Rev 1:N/A
Date: 03/29/06	Disk: CD#6 06110544 Scale: 1"=100'



FROM

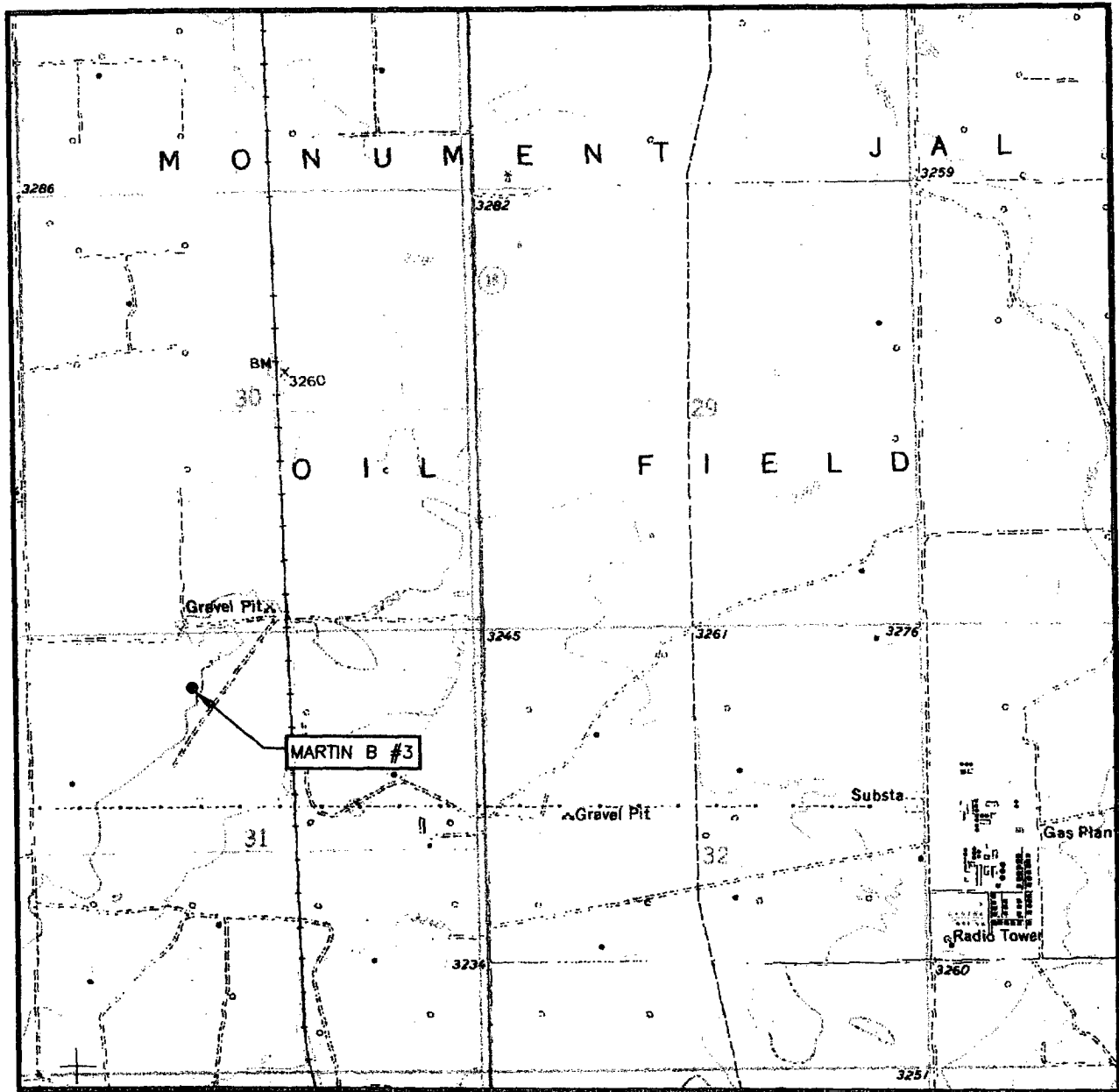


SEC. 31 TWP. 24-S RGE. 37-E
SURVEY N.M.P.M.
COUNTY LEA STATE NEW MEXICO
DESCRIPTION 660' FNL & 1917' FWL
ELEVATION 3250'
OPERATOR PLANTATION OPERATING, LLC
LEASE MARTIN B



**PROVIDING SURVEYING SERVICES
SINCE 1946
JOHN WEST SURVEYING COMPANY
412 N. DAL PASO
HOBBS, N.M. 88240
(505) 393-3117**

LOCATION VERIFICATION MAP



SCALE: 1" = 2000'

CONTOUR INTERVAL:
JAL NW, N.M. - 10'

SEC. 31 TWP. 24-S RGE. 37-E

SURVEY N.M.P.M.

COUNTY LEA STATE NEW MEXICO

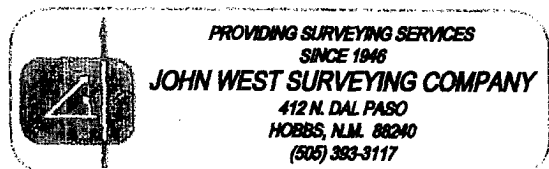
DESCRIPTION 660' FNL & 1917' FWL

ELEVATION 3250'

OPERATOR PLANTATION
OPERATING, LLC

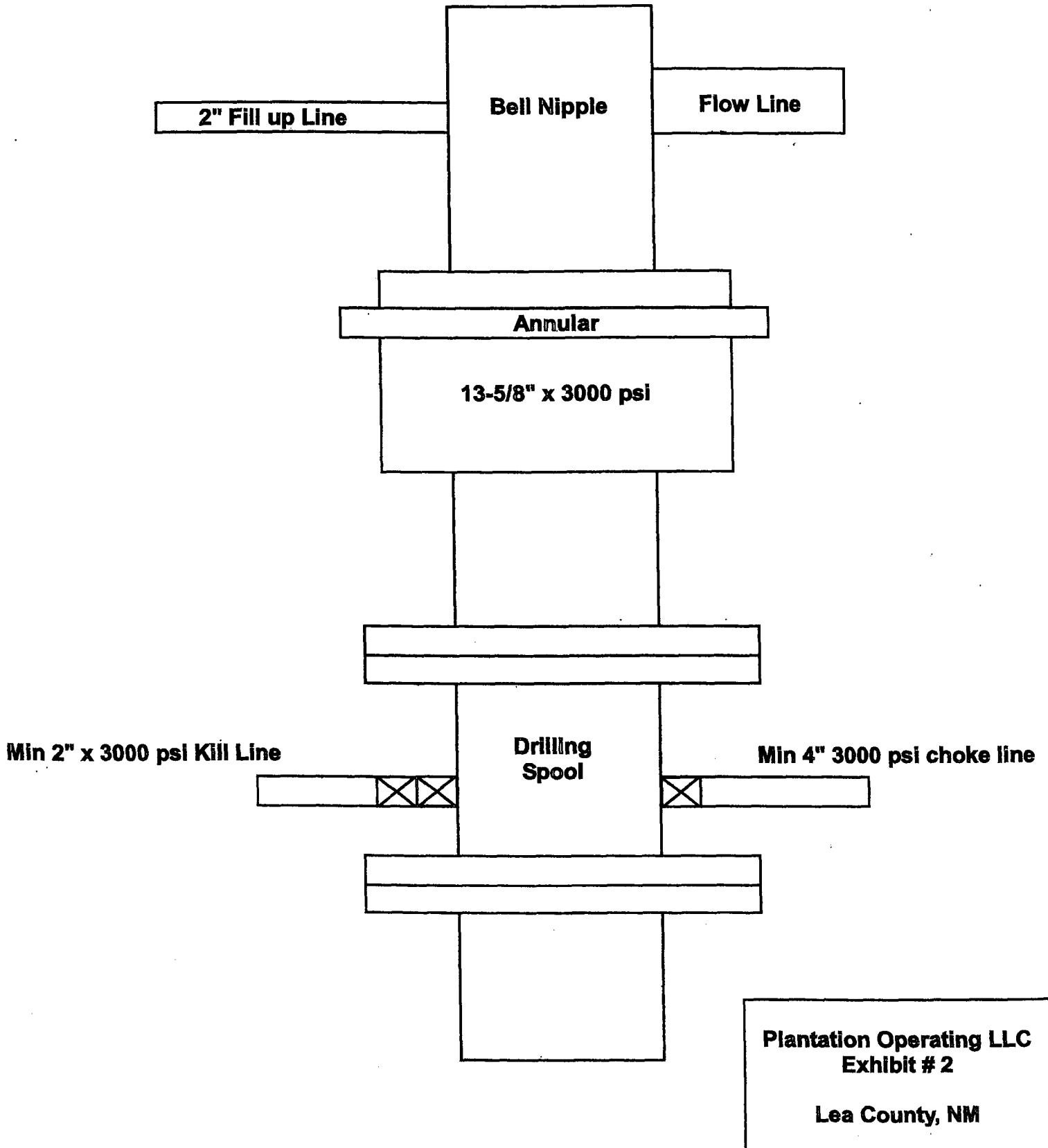
LEASE MARTIN B

U.S.G.S. TOPOGRAPHIC MAP
JAL NW, N.M.

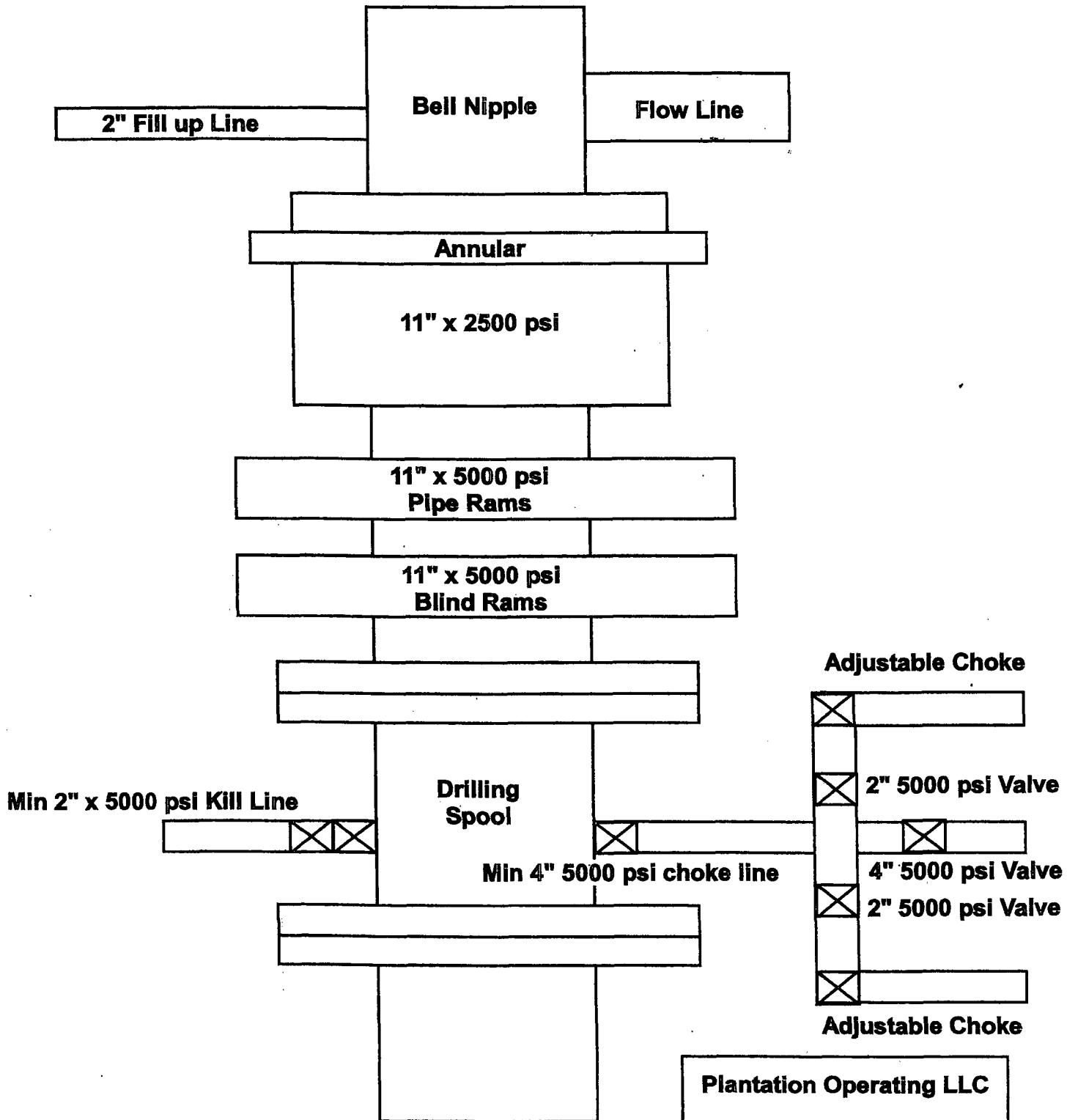


Plantation Operating, LLC

BOP Schematic for 12-1/4" Hole



Plantation Operating, LLC
BOP Schematic for 8-3/4" or- 7-7/8" Hole



Plantation Operating LLC

Exhibit # 2A

Lea County, NM

Submit 3 Copies To Appropriate District
Office
District I
1625 N. French Dr., Hobbs, NM 88240
District II
1301 W. Grand Ave., Artesia, NM 88210
District III
1000 Rio Brazos Rd., Aztec, NM 87410
District IV
1220 S. St. Francis Dr., Santa Fe, NM
87505

State of New Mexico
Energy, Minerals and Natural Resources

Form C-103
May 27, 2004

OIL CONSERVATION DIVISION
1220 South St. Francis Dr.
Santa Fe, NM 87505

WELL API NO. 30-025- 37959
5. Indicate Type of Lease STATE <input type="checkbox"/> FEE <input checked="" type="checkbox"/>
6. State Oil & Gas Lease No.

SUNDRY NOTICES AND REPORTS ON WELLS
(DO NOT USE THIS FORM FOR PROPOSALS TO DRILL OR TO DEEPEN OR PLUG BACK TO A
DIFFERENT RESERVOIR. USE "APPLICATION FOR PERMIT" (FORM C-101) FOR SUCH
PROPOSALS.)

1. Type of Well: Oil Well ☐ Gas Well ☒ Other

2. Name of Operator
Plantation Operating, LLC

3. Address of Operator
2203 Timberloch Place, Suite 229, The Woodlands, TX 77380

4. Well Location
Unit Letter C : 660 feet from the North line and 1917 feet from the West line
Section 31 Township 24S Range 37E NMPM Lea County

11. Elevation (Show whether DR, RKB, RT, GR, etc.)
3248' GR

Pit or Below-grade Tank Application ☐ or Closure ☐

Pit type _____ Depth to Groundwater _____ Distance from nearest fresh water well _____ Distance from nearest surface water _____

Pit Liner Thickness: _____ mil Below-Grade Tank: Volume _____ bbls; Construction Material _____

12. Check Appropriate Box to Indicate Nature of Notice, Report or Other Data

NOTICE OF INTENTION TO:

PERFORM REMEDIAL WORK ☐ PLUG AND ABANDON ☐
TEMPORARILY ABANDON ☐ CHANGE PLANS ☒
PULL OR ALTER CASING ☐ MULTIPLE COMPL ☐

OTHER: _____ Recompletion ☐

SUBSEQUENT REPORT OF:

REMEDIAL WORK ☐ ALTERING CASING ☐
COMMENCE DRILLING OPNS. ☐ P AND A ☐
CASING/CEMENT JOB ☐

OTHER: ☐

13. Describe proposed or completed operations. (Clearly state all pertinent details, and give pertinent dates, including estimated date of starting any proposed work). SEE RULE 1103. For Multiple Completions: Attach wellbore diagram of proposed completion or recompletion.

This form is an amendment to Form C-101 previously filed on March 28, 2006. Our intent to change is as follows:

1. Change pit to a Closed-Loop System.
2. Change casing size as listed below:

Hole Size	Casing Size	Casing weight/foot	Setting Depth	Sack of Cement	Estimated TOC
9 7/8" 8-3/4"	7"	20#	450'	90	Surface
6-1/8"	4-1/2"	11.6#	3650'	260	Surface



I hereby certify that the information above is true and complete to the best of my knowledge and belief. I further certify that any pit or below-grade tank has been/will be constructed or closed according to NMOCD guidelines ☐, a general permit ☐ or an (attached) alternative OCD-approved plan ☐.


SIGNATURE Don Dotson TITLE _____ COO _____ DATE 6/7/2006

Type or print name Donald Dotson
For State Use Only

E-mail address: ddotson@plantationpetro.com Telephone No. 281-296-7222

PETROLEUM ENGINEER

APPROVED BY: [Signature] TITLE _____ DATE JUN 23 2006
Conditions of Approval (if any): _____

 The sender of this message has requested a read receipt. [Click here to send a receipt.](#)

Mull, Donna, EMNRD

From: Phillips, Dorothy, EMNRD
To: Mull, Donna, EMNRD
Cc:
Subject: RE: Financial Assurance Requirement
Attachments:

Sent: Thu 6/22/2006 8:29 AM

Plantation has to submit a one well bond for 30-025-25962 according to Jane's list.
All of the have a blanket bond and the rest do not appear on Jane's list.

From: Mull, Donna, EMNRD
Sent: Thursday, June 22, 2006 8:13 AM
To: Phillips, Dorothy, EMNRD
Cc: Macquesten, Gail, EMNRD; Sanchez, Daniel J., EMNRD
Subject: Financial Assurance Requirement

Dorothy,

Is the Financial Assurance Requirement for these Operators OK?

Plantation Operating LLC (237788)
COG Operating LLC (229137)
Range Operating New Mexico Inc (227588)
Pogo Producing Co (17891)

I have checked the Inactive well list for each Operator.

Please let me know. Thanks and have a nice day. Donna