

DISTRICT I

1625 N. FRENCH DR., HOBBIS, NM 88240

DISTRICT II

1301 W. GRAND AVENUE, ARTESIA, NM 80210

DISTRICT III

1000 Rio Brazos Rd., Aztec, NM 87410

DISTRICT IV

1220 S. ST. FRANCIS DR., SANTA FE, NM 87505

State of New Mexico

Energy, Minerals and Natural Resources Department

OIL CONSERVATION DIVISION

1220 SOUTH ST. FRANCIS DR.
Santa Fe, New Mexico 87505

Form C-102

Revised JUNE 10, 2003

Submit to Appropriate District Office

State Lease - 4 Copies

Fee Lease - 3 Copies

WELL LOCATION AND ACREAGE DEDICATION PLAT

☐ AMENDED REPORT

API Number 30-025-37983	Pool Code 22900/62700	Pool Name Eunice Bluff-Drikard N	Well Name Wanta Ab
Property Code 23510	Property Name GULF HILL		Well Number 8
OGRID No. 873	Operator Name APACHE CORPORATION		Elevation 3472'

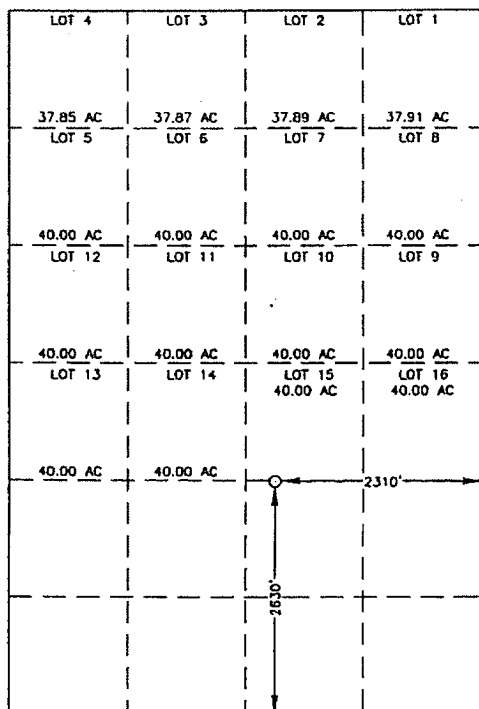
Surface Location

UL or lot No.	Section	Township	Range	Lot Idn	Feet from the	North/South line	Feet from the	East/West line	County
J	4	21-S	37-E		2630	SOUTH	2310	EAST	LEA

Bottom Hole Location If Different From Surface

UL or lot No.	Section	Township	Range	Lot Idn	Feet from the	North/South line	Feet from the	East/West line	County
Dedicated Acres 40	Joint or Infill	Consolidation Code	Order No.	NSL-5281 (SD)					

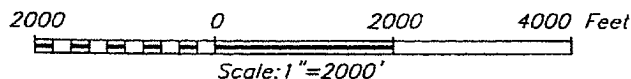
NO ALLOWABLE WILL BE ASSIGNED TO THIS COMPLETION UNTIL ALL INTERESTS HAVE BEEN CONSOLIDATED
OR A NON-STANDARD UNIT HAS BEEN APPROVED BY THE DIVISION



GEODETIC COORDINATES
NAD 27 NME

Y=550417.4 N
X=859721.1 E

LAT.=32°30'28.06" N
LONG.=103°09'59.33" W



OPERATOR CERTIFICATION

I hereby certify that the information
contained herein is true and complete to the
best of my knowledge and belief.

Lana Williams
Signature

Lana Williams
Printed Name

Eng. Tech
Title

6/28/06
Date

SURVEYOR CERTIFICATION

I hereby certify that the well location shown
on this plat was plotted from field notes of
actual surveys made by me or under my
supervision, and that the same is true and
correct to the best of my belief.

JUNE 10, 2005

Date Surveyed
Signature & Seal
Professional Surveyor
GARY E. ELLISON
NEW MEXICO
05.11.0875
Certificate No. GARY E. ELLISON 12641

DISTRICT I
1825 N. FRENCH DR., HOBBS, NM 58240

DISTRICT II
1301 V. GRAND AVENUE, ARTESIA, NM 88210

DISTRICT III
1000 Rio Brazos Rd., Aztec, NM 87410

DISTRICT IV
1220 S. ST. FRANCIS DR., SANTA FE, NM 87505

State of New Mexico
Energy, Minerals and Natural Resources Department

OIL CONSERVATION DIVISION
1220 SOUTH ST. FRANCIS DR.
Santa Fe, New Mexico 87505

Form C-102
Revised JUNE 10, 2003
Submit to Appropriate District Office
State Lease - 4 Copies
Fee Lease - 3 Copies

WELL LOCATION AND ACREAGE DEDICATION PLAT

☐ AMENDED REPORT

API Number 30-025-37983	Pool Code	Pool Name
Property Code 23510	Property Name GULF HILL	Well Number 8
OGRID No. 873	Operator Name APACHE CORPORATION	Elevation 3472'

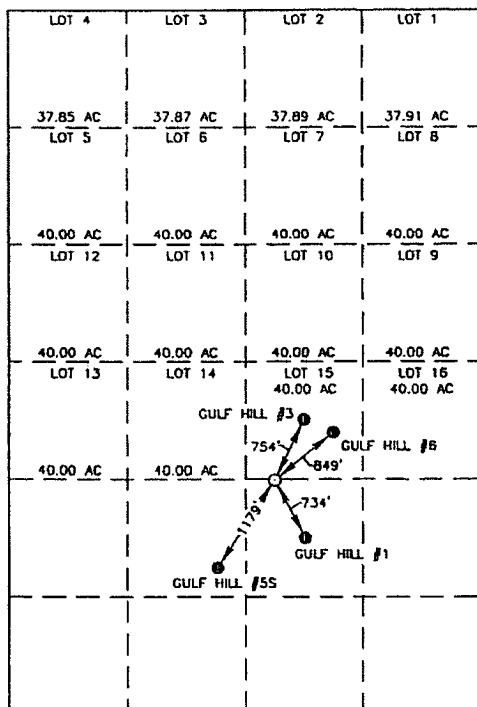
Surface Location

UL or lot No.	Section	Township	Range	Lot Idn	Feet from the	North/South line	Feet from the	East/West line	County
J	4	21-S	37-E		2630	SOUTH	2310	EAST	LEA

Bottom Hole Location If Different From Surface

UL or lot No.	Section	Township	Range	Lot Idn	Feet from the	North/South line	Feet from the	East/West line	County
Dedicated Acres	Joint or Infill	Consolidation Code	Order No.						

NO ALLOWABLE WILL BE ASSIGNED TO THIS COMPLETION UNTIL ALL INTERESTS HAVE BEEN CONSOLIDATED
OR A NON-STANDARD UNIT HAS BEEN APPROVED BY THE DIVISION



2000 0 2000 4000 Feet
Scale: 1"=2000'

OPERATOR CERTIFICATION

I hereby certify that the information contained herein is true and complete to the best of my knowledge and belief.

Bana Williams
Signature
Long Williams
Printed Name
Eng. Tech
Title
6/28/06
Date

SURVEYOR CERTIFICATION

I hereby certify that the well location shown on this plat was plotted from field notes of actual surveys made by me or under my supervision, and that the same is true and correct to the best of my belief.

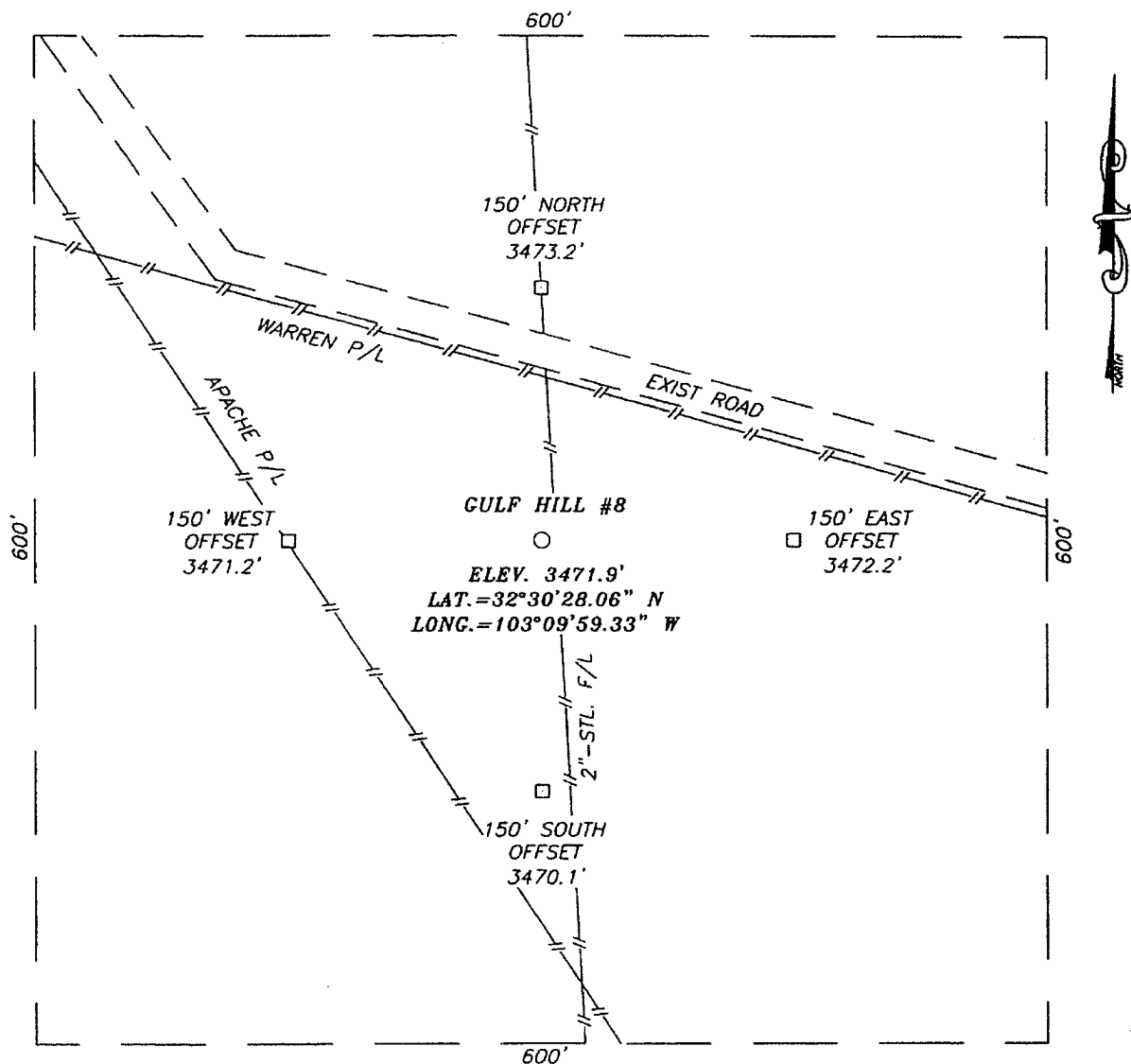
JUNE 10, 2005

Date Surveyed JR
Signature & Seal of
Professional Surveyor

05.11.0875

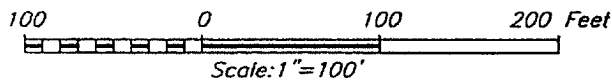
Certificate No. GARY EIDSON 12841

SECTION 4, TOWNSHIP 21 SOUTH, RANGE 37 EAST, N.M.P.M.,
LEA COUNTY, NEW MEXICO



DIRECTIONS TO LOCATION

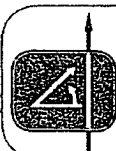
FROM THE INTERSECTION OF ST. HWY 18 AND CO. RD. E49 (HILL RD.) GO NORTH ON ST. HWY. #18 FOR APPROX. 1.0 MILES. TURN LEFT (WEST) AND GO APPROX. 0.3 MILES. TURN RIGHT (NORTH) AND GO APPROX. 0.6 MILES. TURN LEFT (WEST) AT "T" INTERSECTION AND GO APPROX. 0.08 MILES. TURN RIGHT (NORTH) AND GO APPROX. 0.2 MILES. TURN LEFT (NW) AN GO APPROX. 0.12 MILES. THIS LOCATION IS APPROX. 100' SOUTH.



APACHE CORPORATION

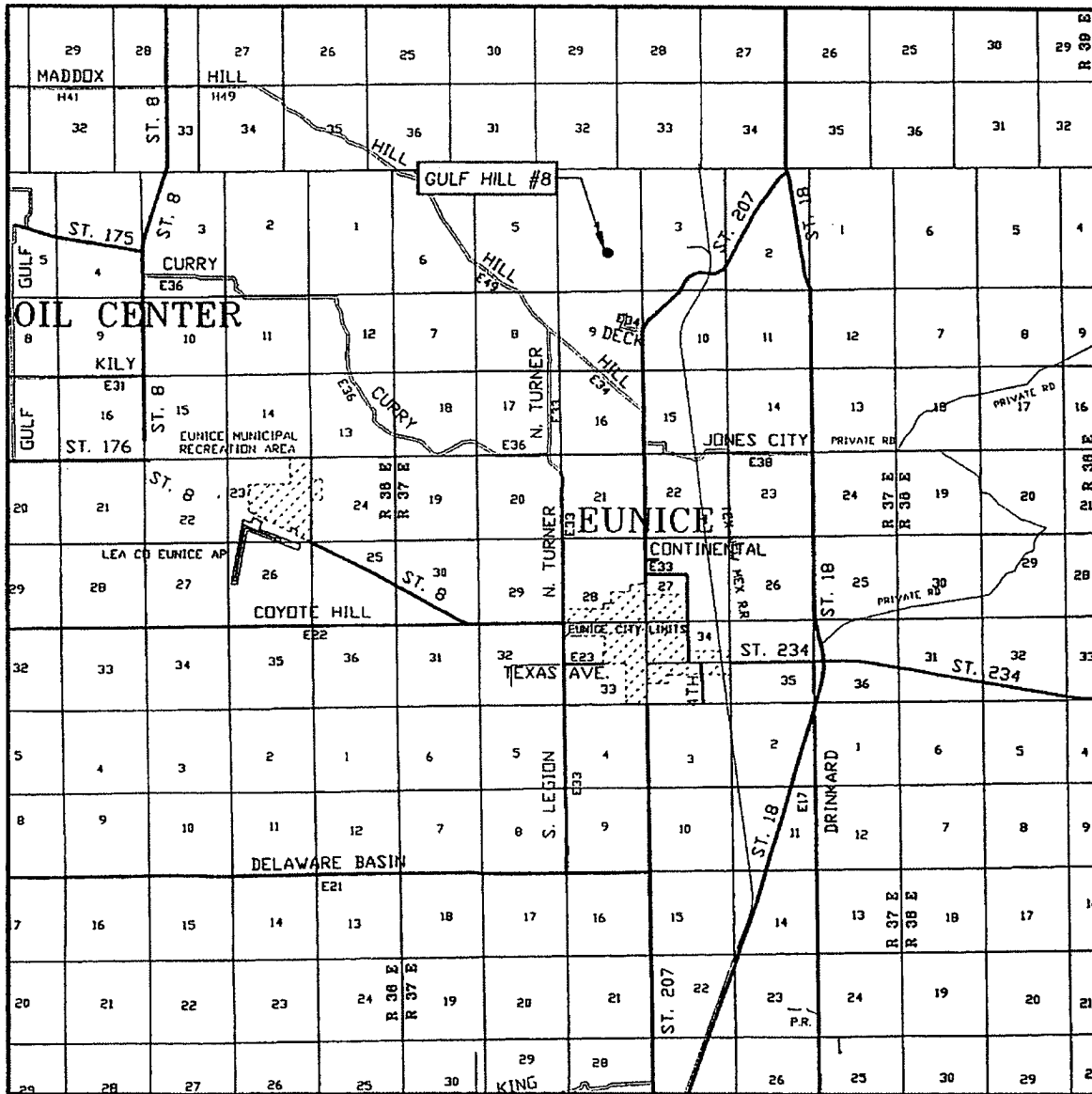
GULF HILL #8 WELL
LOCATED 2630 FEET FROM THE SOUTH LINE
AND 2310 FEET FROM THE EAST LINE OF SECTION 4,
TOWNSHIP 21 SOUTH, RANGE 37 EAST, N.M.P.M.,
LEA COUNTY, NEW MEXICO.

Survey Date: 06/10/05	Sheet 1 of 1 Sheets
W.O. Number: 05.11.0875	Dr By: J.R.
Date: 06/17/05	Disk: CD#5
05110875	Scale: 1"=100'



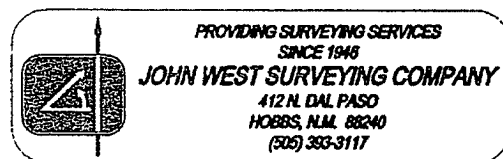
PROVIDING SURVEYING SERVICES
SINCE 1948
JOHN WEST SURVEYING COMPANY
412 N. DAL PASO
HOBBS, N.M. 88240
(505) 393-3117

VICINITY MAP

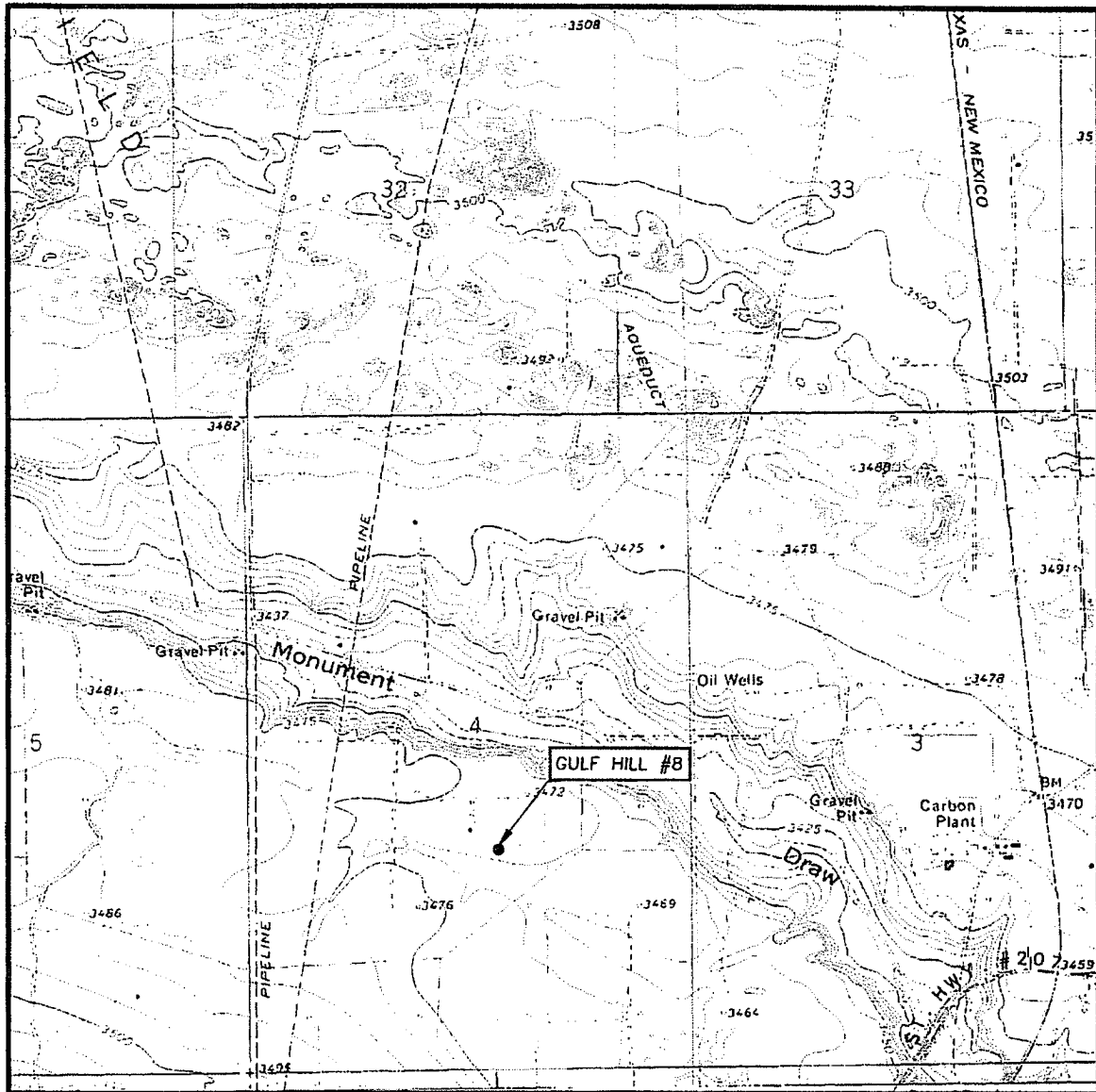


SCALE: 1" = 2 MILES

SEC. 4 TWP. 21-S RGE. 37-E
 SURVEY N.M.P.M.
 COUNTY LEA
 DESCRIPTION 2630' FSL & 2310' FEL
 ELEVATION 3472'
 OPERATOR APACHE CORPORATION
 LEASE GULF HILL



LOCATION VERIFICATION MAP



SCALE: 1" = 2000'

CONTOUR INTERVAL:
HOBBS SW, N.M. - 5'

SEC. 4 TWP. 21-S RGE. 37-E

SURVEY N.M.P.M.

COUNTY LEA

DESCRIPTION 2630' FSL & 2310' FEL

ELEVATION 3472'

OPERATOR APACHE CORPORATION

LEASE GULF HILL

U.S.G.S. TOPOGRAPHIC MAP
HOBBS SW, N.M.

