

District I  
1625 N. French Dr., Hobbs, NM 88240  
District II  
1301 W. Grand Avenue, Artesia, NM 88210  
District III  
1000 Rio Brazos Road, Aztec, NM 87410  
District IV  
1220 S. St. Francis Dr., Santa Fe, NM 87505

State of New Mexico  
Energy Minerals and Natural Resources

Form C-101  
Revised March 17, 1999

Oil Conservation Division  
1220 South St. Francis Dr.  
Santa Fe, NM 87505

Submit to appropriate District Office  
State Lease - 6 Copies  
Fee Lease - 5 Copies

☐ AMENDED REPORT

**APPLICATION FOR PERMIT TO DRILL, RE-ENTER, DEEPEN, PLUGBACK, OR ADD A ZONE**

<sup>1</sup> Operator Name and Address Chesapeake Operating, Inc. P. O. Box 18496 Okla. City, OK 73154-0496		<sup>2</sup> OGRID Number 147179
<sup>3</sup> Property Code 24402		<sup>4</sup> Property Name Boyce 15
<sup>5</sup> API Number 30-025-36354		<sup>6</sup> Well No. 4

**<sup>7</sup> Surface Location**

UL or lot no.	Section	Township	Range	Lot Idn	Feet from the	North/South line	Feet from the	East/West line	County
I	15	16S	35E		2310	South	660	East	Lea

**<sup>8</sup> Proposed Bottom Hole Location If Different From Surface**

UL or lot no.	Section	Township	Range	Lot Idn	Feet from the	North/South line	Feet from the	East/West line	County
<sup>9</sup> Proposed Pool 1 North Shoe-Bar Atoka					<sup>10</sup> Proposed Pool 2				

<sup>11</sup> Work Type Code N	<sup>12</sup> Well Type Code G	<sup>13</sup> Cable/Rotary R	<sup>14</sup> Lease Type Code P	<sup>15</sup> Ground Level Elevation 3985'
<sup>16</sup> Multiple N	<sup>17</sup> Proposed Depth 11,850'	<sup>18</sup> Formation Strawn/Morrow	<sup>19</sup> Contractor Nabors	<sup>20</sup> Spud Date 07/15/03

**<sup>21</sup> Proposed Casing and Cement Program**

Hole Size	Casing Size	Casing weight/foot	Setting Depth	Sacks of Cement	Estimated TOC
17-1/2	13-3/8	48#	0-440'	± 500	Surface
11"	8-5/8	32#	0-4200'	± 1400	Surface
7-7/8	5-1/2	17#	0-11,850'	± 1100	4200'
					JUL

<sup>22</sup> Describe the proposed program. If this application is to DEEPEN or PLUG BACK, give the data on the present productive zone and proposed new productive zone.

Describe the blowout prevention program, if any. Use additional sheets if necessary.

Chesapeake Operating, proposes to drill to a T.D. of 11,850' in the Strawn & Morrow formations with Nabors #311 as the drilling contractor.

BOP consists of 13-5/8" 10M# blind & pipe rams & 13-5/8" 5M# Annular (See Schematic)

Permit Expires 1 Year From Approval  
Date Unless Drilling Underway

<sup>23</sup> I hereby certify that the information given above is true and complete to the best of my knowledge and belief. Signature: <i>Barbara J. Bale</i> Printed name: Barbara J. Bale Title: Regulatory Analyst Date: 06/10/03 Phone: (405) 848-8000		<b>OIL CONSERVATION DIVISION</b> Approved by: <i>Paul F. Kautz</i> Title: PETROLEUM ENGINEER Approval Date: AUG 07 2003 Expiration Date: Conditions of Approval: Attached <input type="checkbox"/>	
----------------------------------------------------------------------------------------------------------------------------------------------------------------------------------------------------------------------------------------------------------------------------	--	----------------------------------------------------------------------------------------------------------------------------------------------------------------------------------------------------------------------	--

**DISTRICT II**  
**P.O. Drawer DD, Artesia, NM 88211-0719**

## OIL CONSERVATION DIVISION

**P.O. Box 2088**

**Santa Fe, New Mexico 87504-2088**

**DISTRICT III**  
1000 Rio Brazos Rd., Aztec, NM 87410

**DISTRICT IV**  
**P.O. BOX 2088, SANTA FE, N.M. 87504-2088**

# WELL LOCATION AND ACREAGE DEDICATION PLAT

☐ AMENDED REPORT

API Number 30-025-36354	Pool Code 96763	Pool Name North Shoe-Bar Atoka
Property Code 24402	Property Name BOYCE 15	Well Number 4
GRID No. 147179	Operator Name CHESAPEAKE OPERATING, INC.	Elevation 3985'

### Surface Location

UL or lot No.	Section	Township	Range	Lot Idn	Feet from the	North/South line	Feet from the	East/West line	County
1	15	16-S	35-E		2310'	SOUTH	660'	EAST	LEA

## Bottom Hole Location If Different From Surface

UL or lot No.	Section	Township	Range	Lot Idn	Feet from the	North/South line	Feet from the	East/West line	County
Dedicated Acres	Joint or Infill	Consolidation Code	Order No.						
320			1154-4914						

NO ALLOWABLE WILL BE ASSIGNED TO THIS COMPLETION UNTIL ALL INTERESTS HAVE BEEN CONSOLIDATED  
OR A NON-STANDARD UNIT HAS BEEN APPROVED BY THE DIVISION

		<p>GEODETIC COORDINATE</p> <p>NAD 27 NME</p> <p>Y.= 699948.8</p> <p>X.= 774591.4</p> <p>LAT.= 32°55'15.72"N</p> <p>LONG.= 103°26'18.58"W</p>		<p><b>OPERATOR CERTIFICATION</b></p> <p>I hereby certify the information contained herein to be true and complete to the best of my knowledge and belief.</p> <p><i>Barbara J. Bale</i></p> <p>Signature</p> <p>Barbara J. Bale</p> <p>Printed Name</p> <p>Regulatory Analyst</p> <p>Title</p> <p>06/10/03</p> <p>Date</p>
				<p><b>SURVEYOR CERTIFICATION</b></p> <p>I hereby certify that the well location shown on this plat was plotted from field notes of actual surveys made by me or under my supervision, and that the same is true and correct to the best of my belief.</p> <p>May 08, 2003</p> <p>Date Surveyed</p> <p>AWB</p> <p>Signature &amp; Seal of Professional Surveyor</p> <p><i>Ronald J. Edson</i> 5/14/03</p> <p>05.11.0492</p> <p>Certificate No. RONALD J. EDSON 3239</p> <p>GARY EDSON 12641</p>

CONTOUR INTERVAL: 5'  
LOVINGTON NW, N.M.

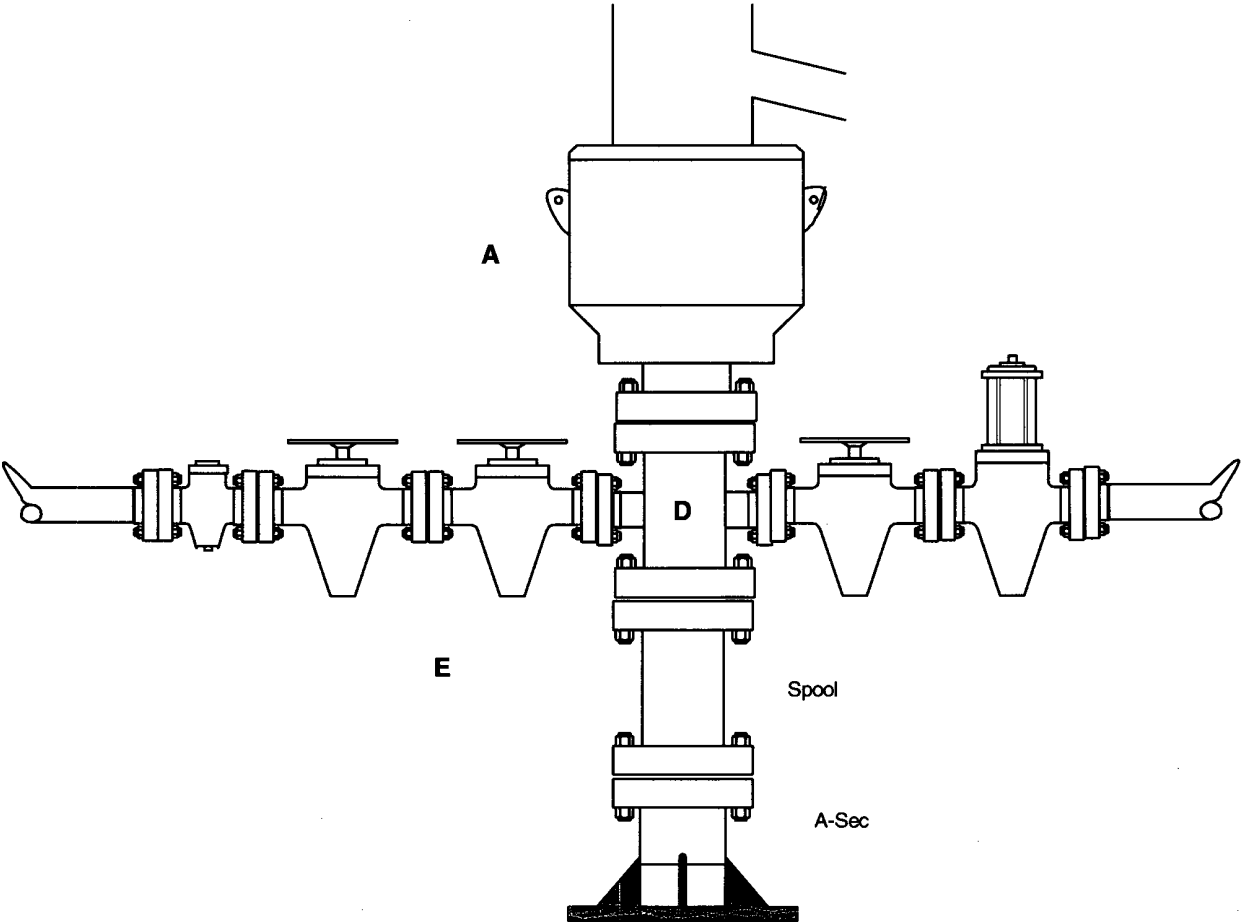
U.S.G.S. TOPOGRAPHIC MAP  
LOVINGTON NW, N.M.

JOHN WEST SURVEYING  
HOBBS, NEW MEXICO  
(505) 393-3117

**BLOWOUT PREVENTOR SCHEMATIC**  
**CHESAPEAKE OPERATING INC**

**WELL** : Boyce 15-4  
**FIELD** :  
**RIG** : Nabors 311  
**COUNTY** : Lea **STATE:** New Mexico  
**OPERATION:** Drill out below 13-5/8" Casing

	SIZE	PRESSURE	DESCRIPTION
A	13-5/8"	5,000#	Annular
D	13-5/8"	10,000#	Mud Cross
Spool		13-5/8" 3M x 13-5/8" 10M	
A-Sec		13-5/8" SOW x 13-5/8" 3M	



**Kill Line**

**Choke Line**

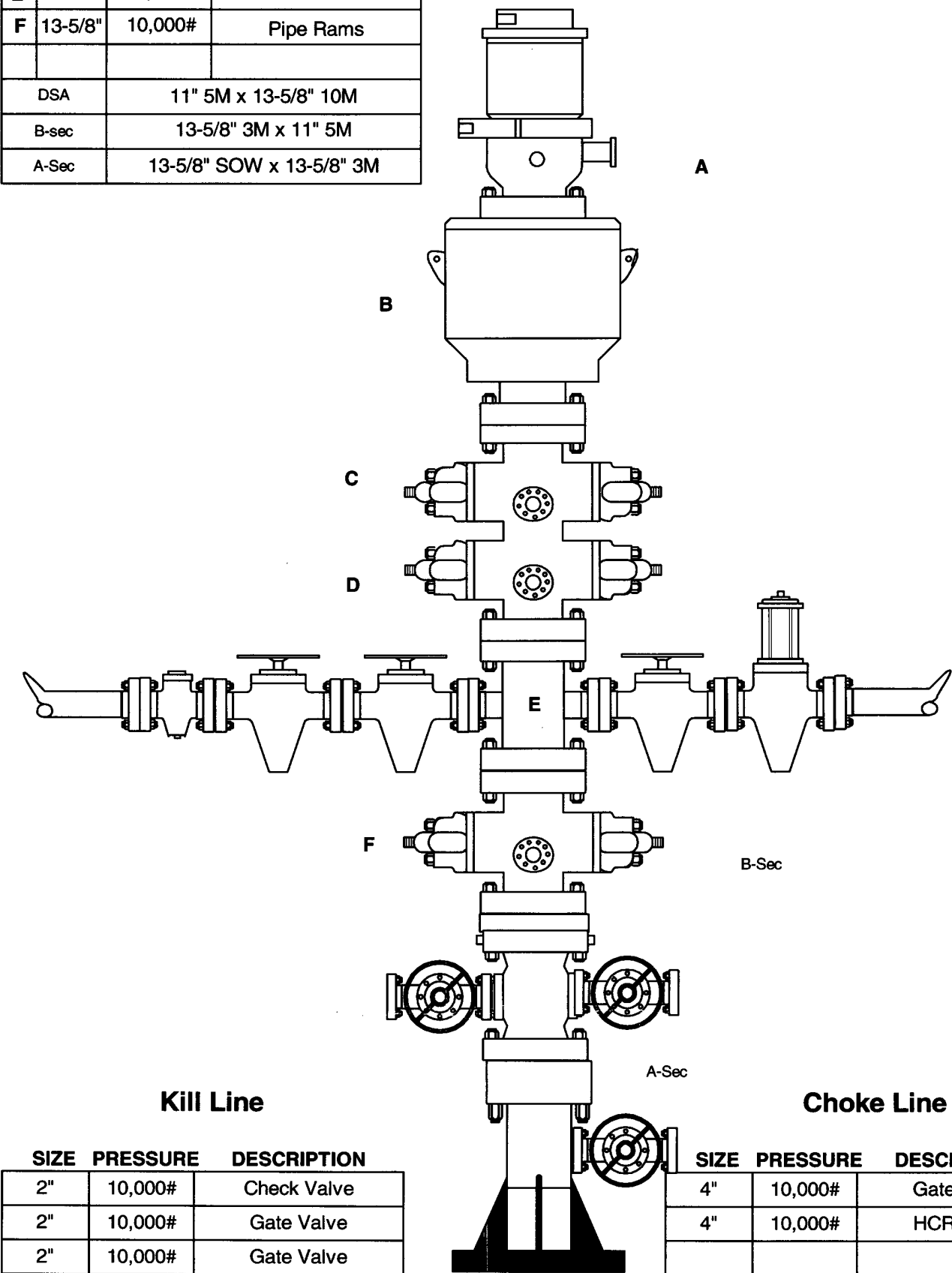
SIZE	PRESSURE	DESCRIPTION
2"	10,000#	Check Valve
2"	10,000#	Gate Valve
2"	10,000#	Gate Valve

SIZE	PRESSURE	DESCRIPTION
4"	10,000#	Gate Valve
4"	10,000#	HCR Valve

**BLOWOUT PREVENTOR SCHEMATIC**  
**CHESAPEAKE OPERATING INC**

**WELL** : Boyce 15-4  
**FIELD** :  
**RIG** : Nabors 311  
**COUNTY** : Lea **STATE:** New Mexico  
**OPERATION:** Drill out below 8-5/8" Casing

	SIZE	PRESSURE	DESCRIPTION
A	13-5/8"	500#	Rot Head
B	13-5/8"	5,000#	Annular
C	13-5/8"	10,000#	Pipe Rams
D	13-5/8"	10,000#	Blind Rams
E	13-5/8"	10,000#	Mud Cross
F	13-5/8"	10,000#	Pipe Rams
DSA	11" 5M x 13-5/8" 10M		
B-sec	13-5/8" 3M x 11" 5M		
A-Sec	13-5/8" SOW x 13-5/8" 3M		



SIZE	PRESSURE	DESCRIPTION
2"	10,000#	Check Valve
2"	10,000#	Gate Valve
2"	10,000#	Gate Valve

SIZE	PRESSURE	DESCRIPTION
4"	10,000#	Gate Valve
4"	10,000#	HCR Valve