

DISTRICT I

1725 N. FRANCH DR., BOBBS, NM 88240

DISTRICT II

1301 W. GRAND AVENUE, ARTESIA, NM 88210

DISTRICT III

1000 Rio Brazos Rd., Aztec, NM 87410

DISTRICT IV

1220 S. ST. FRANCIS DR., SANTA FE, NM 87505

State of New Mexico

Energy, Minerals and Natural Resources Department

OIL CONSERVATION DIVISION

1220 SOUTH ST. FRANCIS DR.
Santa Fe, New Mexico 87505

Form C-102

Revised October 12, 2005

Submit to Appropriate District Office

State Lease - 4 Copies

Fee Lease - 3 Copies

WELL LOCATION AND ACREAGE DEDICATION PLAT

☐ AMENDED REPORT

API Number 30-025-38004	Pool Code 19190	Pool Name Drinkard
Property Code 16814	Property Name DC HARDY	Well Number 9
OGRID No. 873	Operator Name APACHE CORPORATION	Elevation 3484'

Surface Location

UL or lot No.	Section	Township	Range	Lot Idn	Feet from the	North/South line	Feet from the	East/West line	County
0	20	21-S	37-E		410	SOUTH	2310	EAST	LEA

Bottom Hole Location If Different From Surface

UL or lot No.	Section	Township	Range	Lot Idn	Feet from the	North/South line	Feet from the	East/West line	County

Dedicated Acres 40	Joint or Infill	Consolidation Code	Order No.
------------------------------	-----------------	--------------------	-----------

NO ALLOWABLE WILL BE ASSIGNED TO THIS COMPLETION UNTIL ALL INTERESTS HAVE BEEN CONSOLIDATED
OR A NON-STANDARD UNIT HAS BEEN APPROVED BY THE DIVISION

<p>GEODETIC COORDINATES NAD 27 NME</p> <p>Y=532302.1 N X=854648.3 E</p> <p>LAT.=32°27'29.38" N LONG.=103°11'00.84" W</p> <p>410' 2310'</p>	<p>OPERATOR CERTIFICATION</p> <p>I hereby certify that the information herein is true and complete to the best of my knowledge and belief, and that this organization either owns a working interest or unleased mineral interest in the land including the proposed bottom hole location or has a right to drill this well at this location pursuant to a contract with an owner of such mineral or working interest, or to a voluntary pooling agreement or a compulsory pooling order heretofore entered by the division.</p> <p><i>Lana Williams</i> Signature Date <i>Lana Williams</i> 7/13/06 Printed Name</p>
	<p>SURVEYOR CERTIFICATION</p> <p>I hereby certify that the well location shown on this plat was plotted from field notes of actual surveys made by me or under my supervision, and that the same is true and correct to the best of my belief.</p> <p>MAY 31, 2006</p> <p>Date Surveyed MR</p> <p>Signature & Seal of Professional Surveyor <i>Gary A. Edson</i> 6/14/06 06.17.0895</p> <p>Certificate No. GARY EDSON 12841 RONALD E. EIDSON 3239</p>

DISTRICT I
1125 N. FRENCH DR., HOBBS, NM 88240

State of New Mexico
Energy, Minerals and Natural Resources Department

DISTRICT II
1301 W. GRAND AVENUE, ARTESIA, NM 88210

DISTRICT III
1000 Rio Brazos Rd., Aztec, NM 87410

OIL CONSERVATION DIVISION
1220 SOUTH ST. FRANCIS DR.
Santa Fe, New Mexico 87505

Form C-102
Revised October 12, 2005
Submit to Appropriate District Office
State Lease - 4 Copies
Fee Lease - 3 Copies

DISTRICT IV
1220 S. ST. FRANCIS DR., SANTA FE, NM 87505

WELL LOCATION AND ACREAGE DEDICATION PLAT

☐ AMENDED REPORT

API Number 30-025-38004	Pool Code 06660	Pool Name Blinedry Oil & Gas (Oil)
Property Code 16814	Property Name DC HARDY	Well Number 9
OGRID No. 873	Operator Name APACHE CORPORATION	Elevation 3484'

Surface Location

UL or lot No.	Section	Township	Range	Lot Idn	Feet from the	North/South line	Feet from the	East/West line	County
0	20	21-S	37-E		410	SOUTH	2310	EAST	LEA

Bottom Hole Location If Different From Surface

UL or lot No.	Section	Township	Range	Lot Idn	Feet from the	North/South line	Feet from the	East/West line	County
Dedicated Acres 40	Joint or Infill	Consolidation Code	Order No.						

NO ALLOWABLE WILL BE ASSIGNED TO THIS COMPLETION UNTIL ALL INTERESTS HAVE BEEN CONSOLIDATED
OR A NON-STANDARD UNIT HAS BEEN APPROVED BY THE DIVISION

	OPERATOR CERTIFICATION <i>I hereby certify that the information herein is true and complete to the best of my knowledge and belief, and that this organization either owns a working interest or unleased mineral interest in the land including the proposed bottom hole location or has a right to drill this well at this location pursuant to a contract with an owner of such mineral or working interest, or to a voluntary pooling agreement or a compulsory pooling order heretofore entered by the division.</i> Lana Williams Signature Date Lana Williams 7/13/06 Printed Name
	SURVEYOR CERTIFICATION <i>I hereby certify that the well location shown on this plat was plotted from field notes of actual surveys made by me or under my supervision, and that the same is true and correct to the best of my belief.</i> MAY 31, 2006 Date Surveyed MR Signature & Seal of Professional Surveyor GARY R. EIDSON 6/14/06 06.17.0895 Certificate No. GARY EIDSON 12641 RONALD EIDSON 3239

DISTRICT I
1125 N. FRENCH DR., HOBBS, NM 88240

State of New Mexico
Energy, Minerals and Natural Resources Department

DISTRICT II
1301 W. GRAND AVENUE, ARTESIA, NM 88210

DISTRICT III
1000 Rio Brazos Rd., Aztec, NM 87410

OIL CONSERVATION DIVISION
1220 SOUTH ST. FRANCIS DR.
Santa Fe, New Mexico 87505

Form C-102
Revised October 12, 2005
Submit to Appropriate District Office
State Lease - 4 Copies
Fee Lease - 3 Copies

DISTRICT IV
1220 S. ST. FRANCIS DR., SANTA FE, NM 87505

WELL LOCATION AND ACREAGE DEDICATION PLAT

☐ AMENDED REPORT

API Number 30.025-38004	Pool Code 60240	Pool Name Tubb Oil & Gas (L&L)
Property Code 16814	Property Name DC HARDY	Well Number 9
OGRID No. 873	Operator Name APACHE CORPORATION	Elevation 3484'

Surface Location

UL or lot No. 0	Section 20	Township 21-S	Range 37-E	Lot Idn	Feet from the 410	North/South line SOUTH	Feet from the 2310	East/West line EAST	County LEA
---------------------------	----------------------	-------------------------	----------------------	---------	-----------------------------	----------------------------------	------------------------------	-------------------------------	----------------------

Bottom Hole Location If Different From Surface

UL or lot No.	Section	Township	Range	Lot Idn	Feet from the	North/South line	Feet from the	East/West line	County
<hr/>									
Dedicated Acres 40	Joint or Infill	Consolidation Code	Order No.						

NO ALLOWABLE WILL BE ASSIGNED TO THIS COMPLETION UNTIL ALL INTERESTS HAVE BEEN CONSOLIDATED
OR A NON-STANDARD UNIT HAS BEEN APPROVED BY THE DIVISION

<div style="text-align: center;"><p>GEODETIC COORDINATES NAD 27 NME</p><p>Y=532302.1 N X=854648.3 E</p><p>LAT.=32°27'29.38" N LONG.=103°11'00.84" W</p></div> <div style="text-align: center;"><p>410'</p><p>2310'</p></div>	<p>OPERATOR CERTIFICATION</p> <p>I hereby certify that the information herein is true and complete to the best of my knowledge and belief, and that this organization either owns a working interest or unleased mineral interest in the land including the proposed bottom hole location or has a right to drill this well at this location pursuant to a contract with an owner of such mineral or working interest, or to a voluntary pooling agreement or a compulsory pooling order heretofore entered by the division.</p> <p><i>Lana Williams</i> Signature Date Lana Williams 7/13/04 Printed Name</p>	
	<p>SURVEYOR CERTIFICATION</p> <p>I hereby certify that the well location shown on this plat was plotted from field notes of actual surveys made by me or under my supervision, and that the same is true and correct to the best of my belief.</p> <p>MAY 31, 2006</p> <p>Date Surveyed MR</p> <p>Signature & Seal of Professional Surveyor</p> <p><i>Gary Eidson</i> 6/14/06 06.11.0895</p> <p>Certificate No. GARY EIDSON 12641 RONALD EIDSON 3239</p>	

DISTRICT I
1625 N. FRENCH DR., HOBBBS, NM 88240

DISTRICT II
1301 W. GRAND AVENUE, ARTESIA, NM 88210

DISTRICT III
1000 Rio Brazos Rd., Aztec, NM 87410

DISTRICT IV
1220 S. ST. FRANCIS DR., SANTA FE, NM 87505

State of New Mexico
Energy, Minerals and Natural Resources Department

OIL CONSERVATION DIVISION
1220 SOUTH ST. FRANCIS DR.
Santa Fe, New Mexico 87505

Form C-102
Revised October 12, 2005
Submit to Appropriate District Office
State Lease - 4 Copies
Fee Lease - 3 Copies

WELL LOCATION AND ACREAGE DEDICATION PLAT

☐ AMENDED REPORT

API Number		Pool Code	Pool Name
Property Code	Property Name DC HARDY		Well Number 9
OGRID No.	Operator Name APACHE CORPORATION		Elevation 3484'

Surface Location

UL or lot No.	Section	Township	Range	Lot Idn	Feet from the	North/South line	Feet from the	East/West line	County
0	20	21-S	37-E		410	SOUTH	2310	EAST	LEA

Bottom Hole Location If Different From Surface

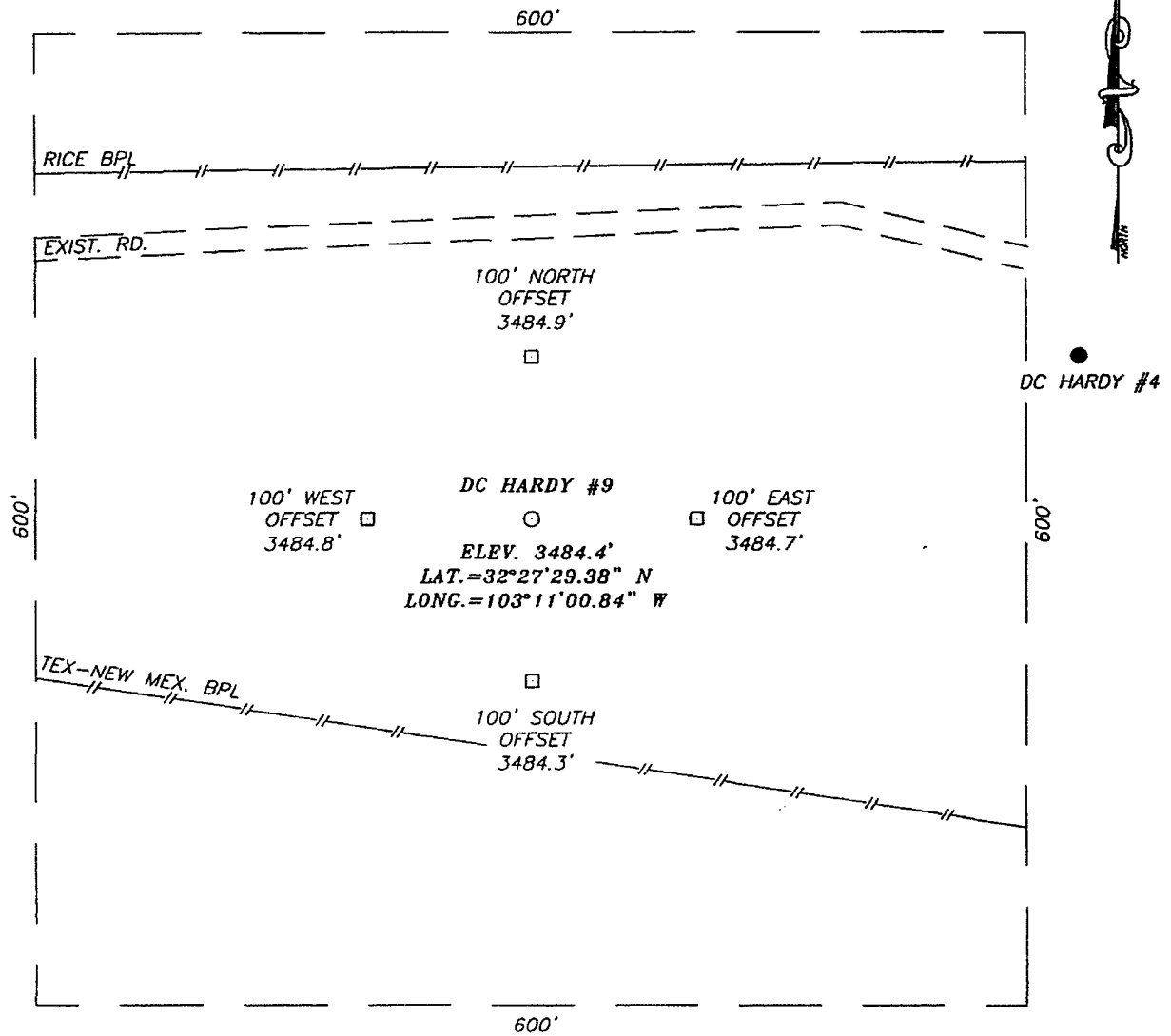
UL or lot No.	Section	Township	Range	Lot Idn	Feet from the	North/South line	Feet from the	East/West line	County

Dedicated Acres	Joint or Infill	Consolidation Code	Order No.

NO ALLOWABLE WILL BE ASSIGNED TO THIS COMPLETION UNTIL ALL INTERESTS HAVE BEEN CONSOLIDATED
OR A NON-STANDARD UNIT HAS BEEN APPROVED BY THE DIVISION

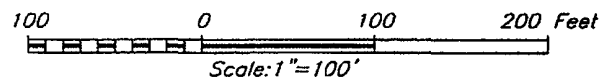
	<p>OPERATOR CERTIFICATION</p> <p>I hereby certify that the information herein is true and complete to the best of my knowledge and belief, and that this organization either owns a working interest or unleased mineral interest in the land including the proposed bottom hole location or has a right to drill this well at this location pursuant to a contract with an owner of such mineral or working interest, or to a voluntary pooling agreement or a compulsory pooling order heretofore entered by the division.</p> <p><u>Lana Williams</u> Signature Date <u>Lana Williams 7/13/06</u> Printed Name</p>
	<p>SURVEYOR CERTIFICATION</p> <p>I hereby certify that the well location shown on this plat was plotted from field notes of actual surveys made by me or under my supervision, and that the same is true and correct to the best of my belief.</p> <p>MAY 31, 2006</p> <p>Date Surveyed MR Signature & Seal of Professional Surveyor</p>
	<p>06.11.0895</p>
	<p>Certificate No. GARY EIDSON 12641 RONALD J. EIDSON 3239</p>

SECTION 20, TOWNSHIP 21 SOUTH, RANGE 37 EAST, N.M.P.M.,
 LEA COUNTY, NEW MEXICO



DIRECTIONS TO LOCATION

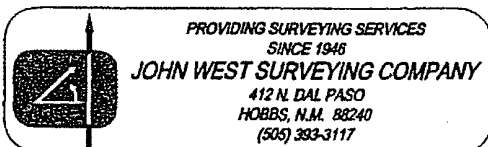
FROM THE INTERSECTION OF ST. HWY. #8 AND CO. RD. #E-33 (TURNER RD.), GO NORTH ON TURNER RD. APPROX. 1.1 MILES. TURN LEFT (THROUGH CATTLE GUARD), AND GO WEST APPROX. 0.4 MILES. THIS LOCATION IS APPROX. 270 FEET SOUTH.



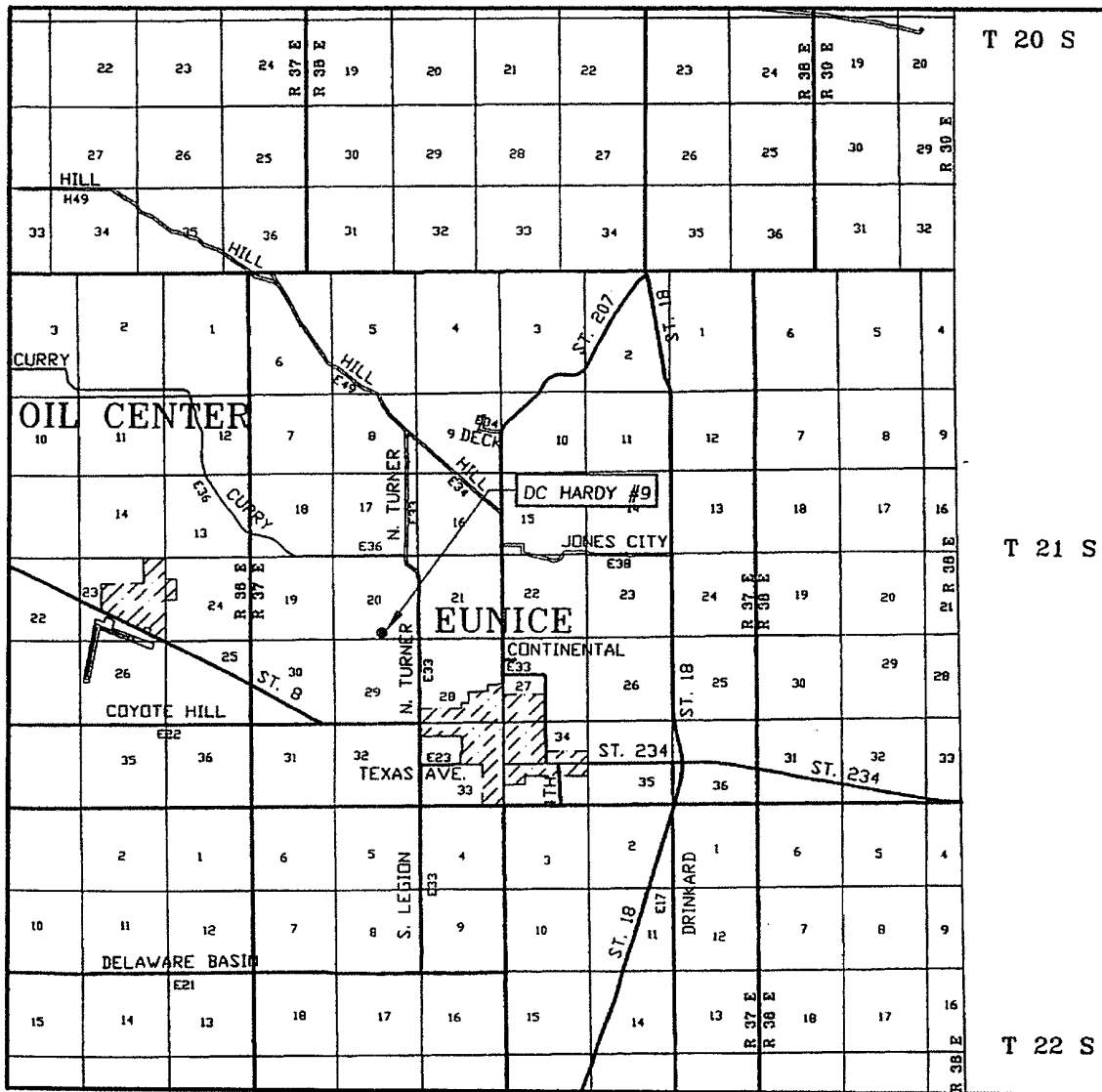
APACHE CORPORATION

DC HARDY #9
 LOCATED 410 FEET FROM THE SOUTH LINE
 AND 2310 FEET FROM THE EAST LINE OF SECTION 20,
 TOWNSHIP 21 SOUTH, RANGE 37 EAST, N.M.P.M.,
 LEA COUNTY, NEW MEXICO.

Survey Date: 05/31/06	Sheet 1 of 1 Sheets
W.O. Number: 06.11.0895	Dr By: M.R. Rev 1:N/A
Date: 06/08/06	Disk: CD#6 06110895 Scale: 1"=100'

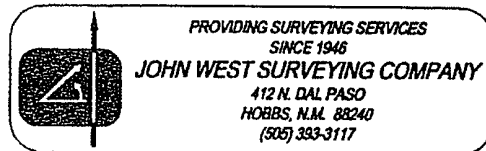


VICINITY MAP

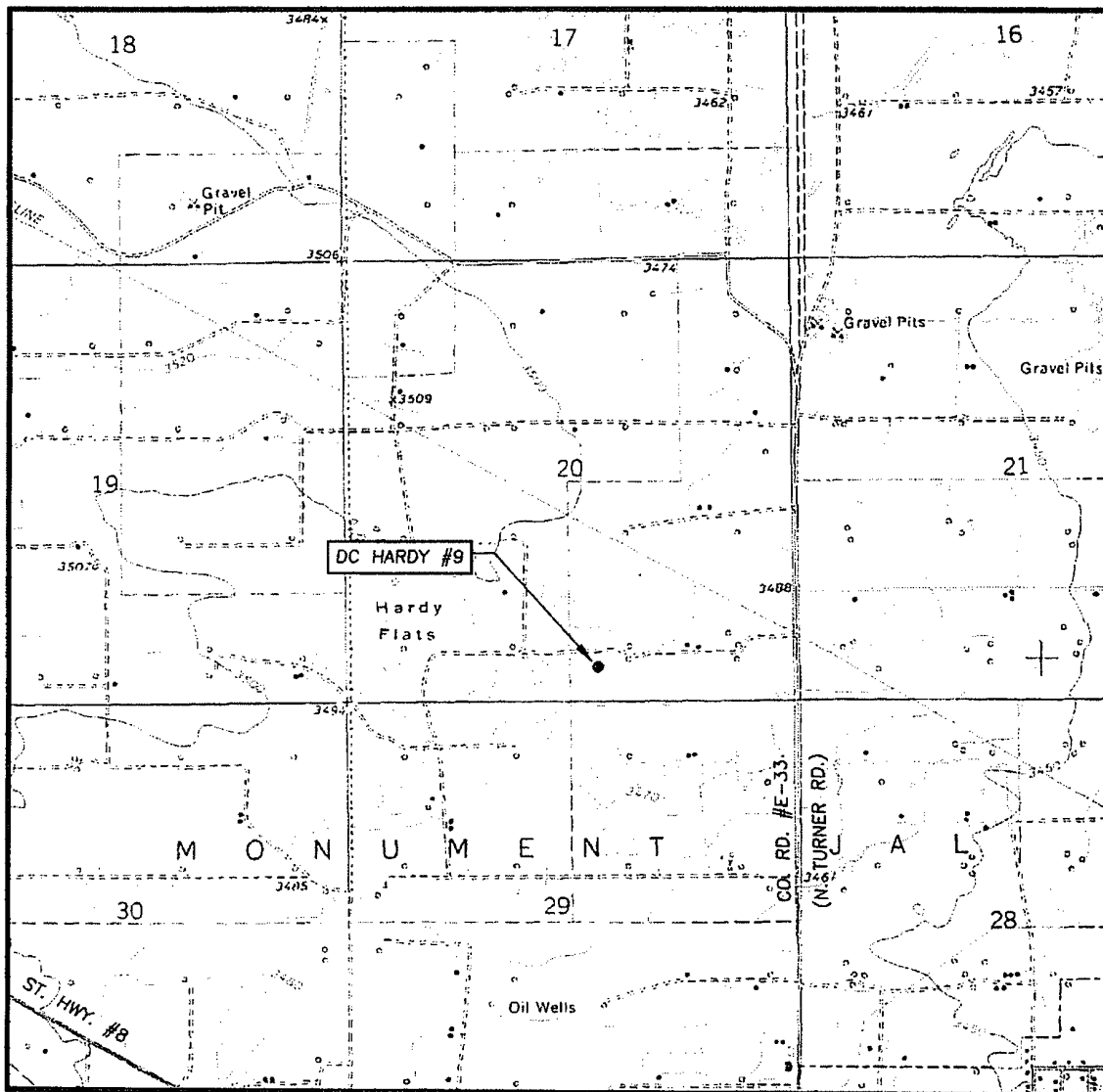


SCALE: 1" = 2 MILES

SEC. 20 TWP. 21-S RGE. 37-E
 SURVEY N.M.P.M.
 COUNTY LEA STATE NEW MEXICO
 DESCRIPTION 410' FSL & 2310' FEL
 ELEVATION 3484'
 OPERATOR APACHE CORPORATION
 LEASE DC HARDY



LOCATION VERIFICATION MAP



SCALE: 1" = 2000'

CONTOUR INTERVAL:
EUNICE, N.M. - 10'

SEC. 20 TWP. 21-S RGE. 37-E

SURVEY _____ N.M.P.M.

COUNTY LEA STATE NEW MEXICO

DESCRIPTION 410' FSL & 2310' FEL

ELEVATION 3484'

OPERATOR APACHE CORPORATION

LEASE DC HARDY

U.S.G.S. TOPOGRAPHIC MAP
EUNICE, N.M.

