

DISTRICT I
1625 N. FRENCH DR., HOBBS, NM 88240

DISTRICT II
1301 W. GRAND AVENUE, ARTESIA, NM 88210

DISTRICT III
1000 Rio Brazos Rd., Aztec, NM 87410

DISTRICT IV
1220 S. ST. FRANCIS DR., SANTA FE, NM 87505

State of New Mexico
Energy, Minerals and Natural Resources Department

OIL CONSERVATION DIVISION
1220 SOUTH ST. FRANCIS DR.
Santa Fe, New Mexico 87505

Form C-102
Revised October 12, 2005
Submit to Appropriate District Office
State Lease - 4 Copies
Fee Lease - 3 Copies

WELL LOCATION AND ACREAGE DEDICATION PLAT

☐ AMENDED REPORT

API Number 30-025-38009	Pool Code 19190	Pool Name Drinkard
Property Code 26470	Property Name H. CORRIGAN	Well Number 18
OGRID No. 873	Operator Name APACHE CORPORATION	Elevation 3440'

Surface Location

UL or lot No.	Section	Township	Range	Lot Idn	Feet from the	North/South line	Feet from the	East/West line	County
1	4	22-S	37-E		330	NORTH	330	EAST	LEA

Bottom Hole Location If Different From Surface

UL or lot No.	Section	Township	Range	Lot Idn	Feet from the	North/South line	Feet from the	East/West line	County

Dedicated Acres 40	Joint or Infill	Consolidation Code	Order No.
------------------------------	-----------------	--------------------	-----------

NO ALLOWABLE WILL BE ASSIGNED TO THIS COMPLETION UNTIL ALL INTERESTS HAVE BEEN CONSOLIDATED
OR A NON-STANDARD UNIT HAS BEEN APPROVED BY THE DIVISION

LOT 4	LOT 3	LOT 2	LOT 1
39.91 AC	39.86 AC	39.80 AC	39.75 AC
GEODETTIC COORDINATES NAD 27 NME Y=521074.8 N X=862020.6 E LAT.=32°25'37.50" N LONG.=103°09'36.25" W			

OPERATOR CERTIFICATION

I hereby certify that the information herein is true and complete to the best of my knowledge and belief, and that this organization either owns a working interest or unleased mineral interest in the land including the proposed bottom hole location or has a right to drill this well at this location pursuant to a contract with an owner of such mineral or working interest, or to a voluntary pooling agreement or a compulsory pooling order heretofore entered by the division.

Lana Williams
Signature Date **7/13/06**

Lana Williams
Printed Name

SURVEYOR CERTIFICATION

I hereby certify that the well location shown on this plat was plotted from field notes of actual surveys made by me or under my supervision, and that the same is true and correct to the best of my belief.

MAY 31, 2006

Date Surveyed
Signature & Seal of Professional Surveyor
Gary Eidson
06.11.0896

Certificate No. GARY EIDSON 12641
RONALD J. EIDSON 3239

DISTRICT I
1625 N. FRENCH DR., HOBBS, NM 80240

DISTRICT II
1501 W. GRAND AVENUE, ARTESIA, NM 88210

DISTRICT III
1000 Rio Brazos Rd., Aztec, NM 87410

DISTRICT IV
1220 S. ST. FRANCIS DR., SANTA FE, NM 87505

State of New Mexico
Energy, Minerals and Natural Resources Department

OIL CONSERVATION DIVISION
1220 SOUTH ST. FRANCIS DR.
Santa Fe, New Mexico 87505

Form C-102
Revised October 12, 2005
Submit to Appropriate District Office
State Lease - 4 Copies
Fee Lease - 3 Copies

WELL LOCATION AND ACREAGE DEDICATION PLAT

☐ AMENDED REPORT

API Number 30-025-38009	Pool Code 60240	Pool Name Tubb Oil & Gas <O.I>
Property Code 26470	Property Name H. CORRIGAN	Well Number 18
OGRID No. 873	Operator Name APACHE CORPORATION	Elevation 3440'

Surface Location

UL or lot No.	Section	Township	Range	Lot Idn	Feet from the	North/South line	Feet from the	East/West line	County
1	4	22-S	37-E		330	NORTH	330	EAST	LEA

Bottom Hole Location If Different From Surface

UL or lot No.	Section	Township	Range	Lot Idn	Feet from the	North/South line	Feet from the	East/West line	County
Dedicated Acres 40		Joint or Infill	Consolidation Code	Order No.					

NO ALLOWABLE WILL BE ASSIGNED TO THIS COMPLETION UNTIL ALL INTERESTS HAVE BEEN CONSOLIDATED
OR A NON-STANDARD UNIT HAS BEEN APPROVED BY THE DIVISION

LOT 4	LOT 3	LOT 2	LOT 1
39.91 AC	39.86 AC	39.80 AC	39.75 AC
GEODETTIC COORDINATES NAD 27 NME Y=521074.8 N X=862020.6 E LAT.=32°25'37.50" N LONG.=103°09'36.25" W			

OPERATOR CERTIFICATION

I hereby certify that the information herein is true and complete to the best of my knowledge and belief, and that this organization either owns a working interest or unleased mineral interest in the land including the proposed bottom hole location or has a right to drill this well at this location pursuant to a contract with an owner of such mineral or working interest, or to a voluntary pooling agreement or a compulsory pooling order heretofore entered by the division.

Lana Williams
Signature
Date **7/13/06**
Lana Williams
Printed Name

SURVEYOR CERTIFICATION

I hereby certify that the well location shown on this plat was plotted from field notes of actual surveys made by me or under my supervision, and that the same is true and correct to the best of my belief.

MAY 31, 2006

Date Surveyed
Signature & Seal of Professional Surveyor
Professional Surveyor
NEW MEXICO
GARY E. EDSON
06.11.0896
Certificate No. GARY EDSON 12841
RONALD J. EDSON 3239

State of New Mexico

DISTRICT I
1825 N. FRENCH DR., HOBBS, NM 88240

Energy, Minerals and Natural Resources Department

Form C-102

Revised October 12, 2005

Submit to Appropriate District Office

State Lease - 4 Copies

Fee Lease - 3 Copies

DISTRICT II
1301 W. GRAND AVENUE, ARTESIA, NM 88210

OIL CONSERVATION DIVISION

1220 SOUTH ST. FRANCIS DR.

Santa Fe, New Mexico 87505

DISTRICT III
1000 Rio Brazos Rd., Aztec, NM 87410DISTRICT IV
1220 S. ST. FRANCIS DR., SANTA FE, NM 87505

WELL LOCATION AND ACREAGE DEDICATION PLAT

☐ AMENDED REPORT

API Number 30-025-38009	Pool Code 06660	Pool Name Blincy D. 1 & Gas (D. 1)
Property Code 26470	Property Name H. CORRIGAN	Well Number 18
GRID No. 873	Operator Name APACHE CORPORATION	Elevation 3440'

Surface Location

UL or lot No.	Section	Township	Range	Lot Idn	Feet from the	North/South line	Feet from the	East/West line	County
1	4	22-S	37-E		330	NORTH	330	EAST	LEA

Bottom Hole Location If Different From Surface

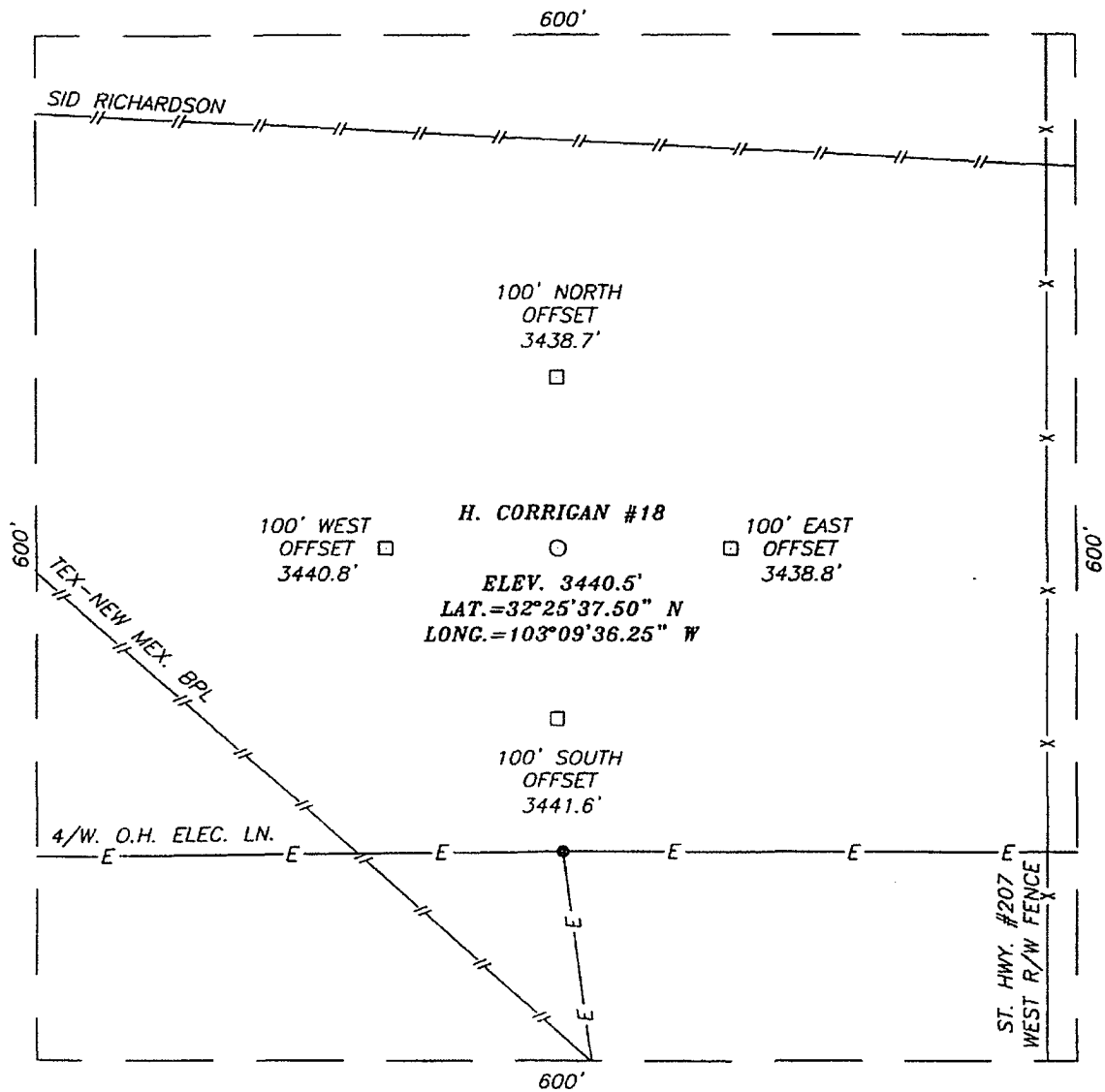
UL or lot No.	Section	Township	Range	Lot Idn	Feet from the	North/South line	Feet from the	East/West line	County
Dedicated Acres 40	Joint or Infill	Consolidation Code	Order No.						

NO ALLOWABLE WILL BE ASSIGNED TO THIS COMPLETION UNTIL ALL INTERESTS HAVE BEEN CONSOLIDATED
OR A NON-STANDARD UNIT HAS BEEN APPROVED BY THE DIVISION

LOT 4	LOT 3	LOT 2	LOT 1
39.91 AC	39.86 AC	39.80 AC	39.75 AC
GEODETIC COORDINATES NAD 27 NME Y=521074.8 N X=862020.6 E LAT.=32°25'37.50" N LONG.=103°09'36.25" W			
OPERATOR CERTIFICATION I hereby certify that the information herein is true and complete to the best of my knowledge and belief, and that this organization either owns a working interest or unleased mineral interest in the land including the proposed bottom hole location or has a right to drill this well at this location pursuant to a contract with an owner of such mineral or working interest, or to a voluntary pooling agreement or a compulsory pooling order heretofore entered by the division. Signature: <u>Lana Williams</u> Date: <u>7/13/06</u> Printed Name: <u>Lana Williams</u>			
SURVEYOR CERTIFICATION I hereby certify that the well location shown on this plat was plotted from field notes of actual surveys made by me or under my supervision, and that the same is true and correct to the best of my belief. Date Surveyed: <u>MAY 31, 2006</u> MR Signature & Seal of Professional Surveyor: <u>GARY EIDSON</u> Certificate No. <u>06.11.0896</u> Certificate No. GARY EIDSON 12841 RONALD J. EIDSON 3239			

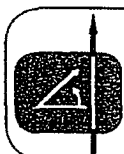
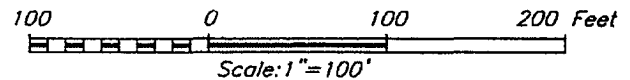
[illegible]

SECTION 4, TOWNSHIP 22 SOUTH, RANGE 37 EAST, N.M.P.M.,
LEA COUNTY, NEW MEXICO



DIRECTIONS TO LOCATION

FROM THE INTERSECTION OF ST. HWY. #207 AND CO. RD. E-23 (TEXAS AVE.) (IN EUNICE, N.M.), GO SOUTH APPROX. 1.0 MILES. TURN RIGHT AND GO WEST APPROX. 0.4 MILES. TURN RIGHT AND GO NORTH APPROX. 0.4 MILES. TURN RIGHT AND GO EAST APPROX. 0.3 MILES. THIS LOCATION IS APPROX. 300 FEET NORTH.



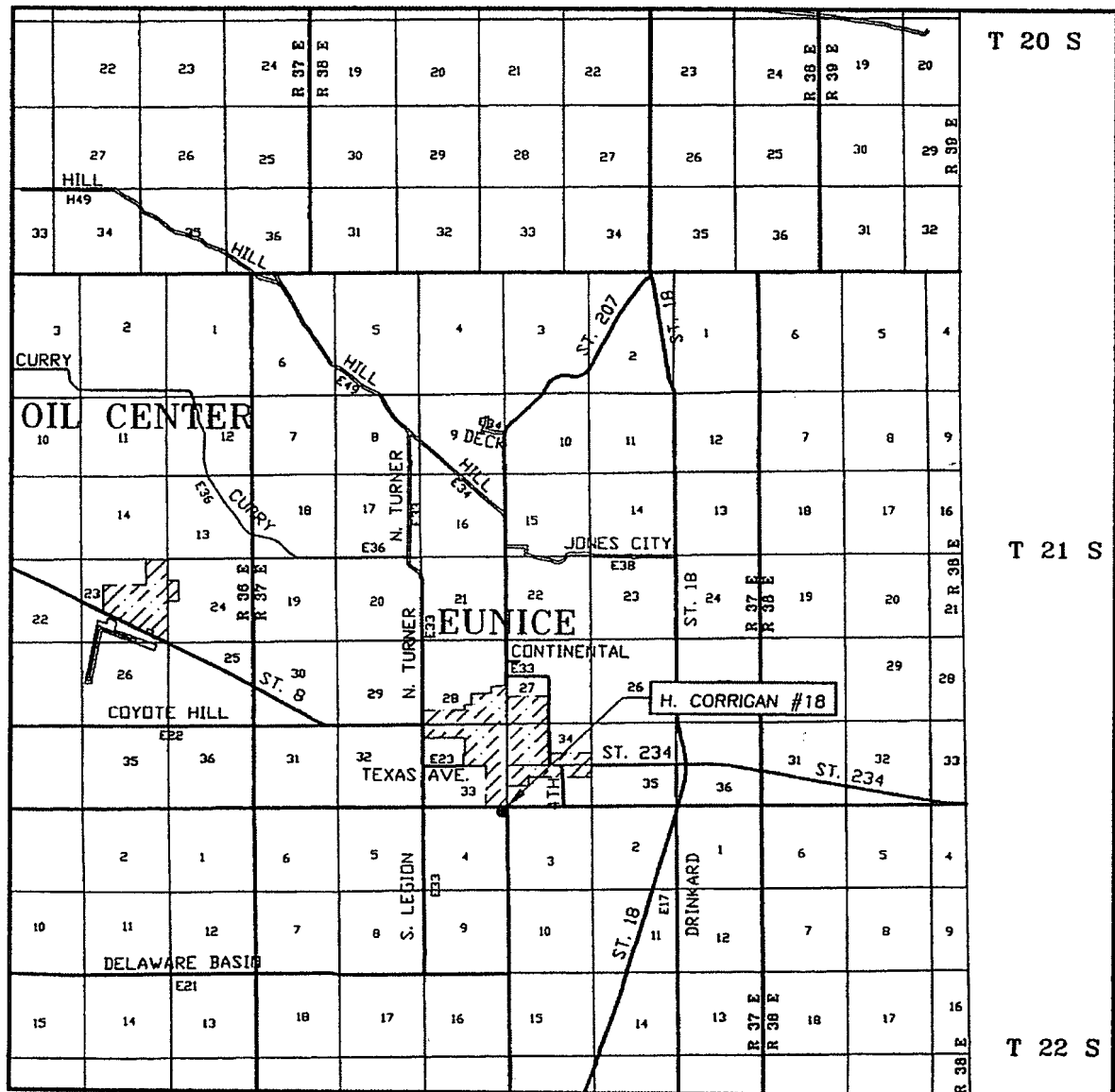
PROVIDING SURVEYING SERVICES
SINCE 1946
JOHN WEST SURVEYING COMPANY
412 N. DAL PASO
HOBBS, N.M. 88240
(505) 393-3117

APACHE CORPORATION

H. CORRIGAN #18
LOCATED 330 FEET FROM THE NORTH LINE
AND 330 FEET FROM THE EAST LINE OF SECTION 4,
TOWNSHIP 22 SOUTH, RANGE 37 EAST, N.M.P.M.,
LEA COUNTY, NEW MEXICO.

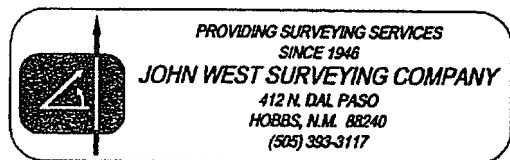
Survey Date: 05/31/06	Sheet 1 of 1 Sheets
W.O. Number: 06.11.0896	Dr By: M.R.
Date: 06/08/06	Rev 1:N/A
Disk: CD#6	06110896
Scale: 1"=100'	

VICINITY MAP

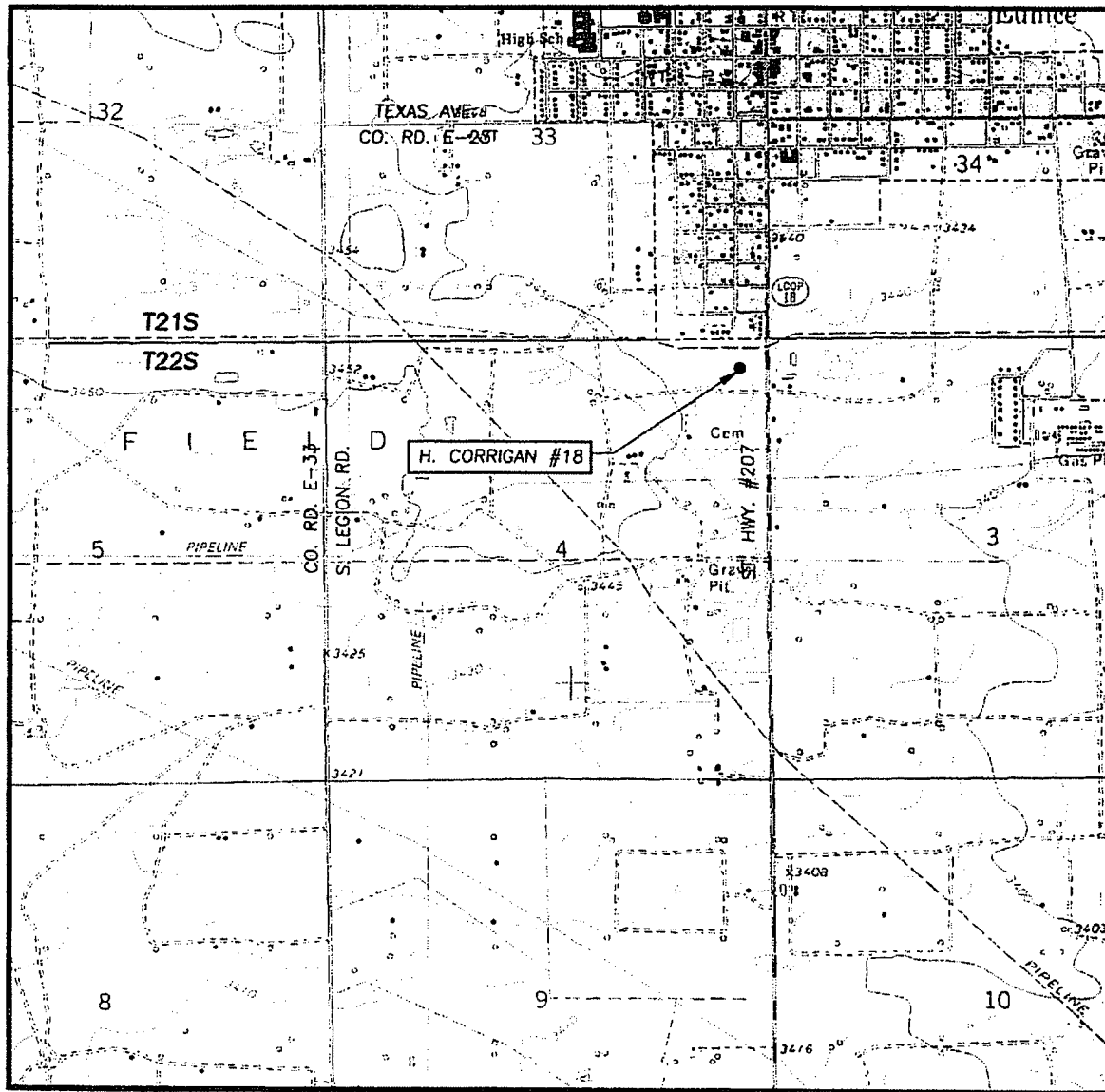


SCALE: 1" = 2 MILES

SEC. 4 TWP. 22-S RGE. 37-E
 SURVEY N.M.P.M.
 COUNTY LEA STATE NEW MEXICO
 DESCRIPTION 330' FNL & 330' FEL
 ELEVATION 3440'
 OPERATOR APACHE CORPORATION
 LEASE H. CORRIGAN



LOCATION VERIFICATION MAP



SCALE: 1" = 2000'

CONTOUR INTERVAL:
EUNICE, N.M. - 10'

SEC. 4 TWP. 22-S RGE. 37-E

SURVEY N.M.P.M.

COUNTY LEA STATE NEW MEXICO

DESCRIPTION 330' FNL & 330' FEL

ELEVATION 3440'

OPERATOR APACHE CORPORATION

LEASE H. CORRIGAN

U.S.G.S. TOPOGRAPHIC MAP
EUNICE, N.M.

