

Submit 3 Copies To Appropriate District  
Office  
District I  
1625 N. French Dr., Hobbs, NM 88240  
District II  
1301 W. Grand Ave., Artesia, NM 88210  
District III  
1000 Rio Brazos Rd., Aztec, NM 87410  
District IV  
1220 S. St. Francis Dr., Santa Fe, NM  
87505

State of New Mexico  
Energy, Minerals and Natural Resources

Form C-103  
May 27, 2004

OIL CONSERVATION DIVISION  
1220 South St. Francis Dr.  
Santa Fe, NM 87505

WELL API NO. 30-025-20798
5. Indicate Type of Lease STATE <input checked="" type="checkbox"/> FEE <input type="checkbox"/>
6. State Oil & Gas Lease No. B-2498
7. Lease Name or Unit Agreement Name Vacuum Glorieta East Unit Tract #40
8. Well Number 01
9. OGRID Number 217817
10. Pool name or Wildcat Vacuum Glorieta

SUNDRY NOTICES AND REPORTS ON WELLS  
(DO NOT USE THIS FORM FOR PROPOSALS TO DRILL OR TO DEEPEN OR PLUG BACK TO A  
DIFFERENT RESERVOIR. USE "APPLICATION FOR PERMIT" (FORM C-101) FOR SUCH  
PROPOSALS.)

1. Type of Well: Oil Well ☒ Gas Well ☐ Other

2. Name of Operator  
ConocoPhillips Company ATTN: Celeste Dale

3. Address of Operator  
4001 Penbrook Street Odessa, Texas 79762

4. Well Location  
Unit Letter F : 2 10 feet from the North line and 1,980 feet from the West line  
Section 28 Township 17-S Range 35-E NMPM County Lea

11. Elevation (Show whether DR, RKB, RT, GR, etc.)  
3,949' GL

Pit or Below-grade Tank Application ☒ or Closure ☐

Pit type STEEL Depth to Groundwater          Distance from nearest fresh water well          Distance from nearest surface water N/A

Pit Liner Thickness: STEEL mil Below-Grade Tank: Volume 180 bbls; Construction Material STEEL

12. Check Appropriate Box to Indicate Nature of Notice, Report or Other Data

NOTICE OF INTENTION TO:

PERFORM REMEDIAL WORK ☐ PLUG AND ABANDON ☒  
TEMPORARILY ABANDON ☐ CHANGE PLANS ☐  
PULL OR ALTER CASING ☐ MULTIPLE COMPL ☐  
OTHER: ☐

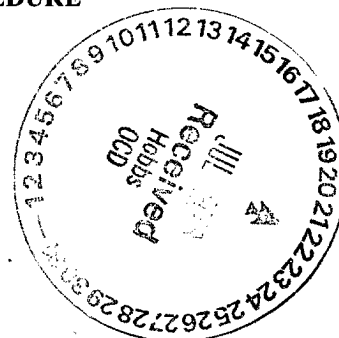
SUBSEQUENT REPORT OF:

REMEDIAL WORK ☐ ALTERING CASING ☐  
COMMENCE DRILLING OPNS. ☐ P AND A ☐  
CASING/CEMENT JOB ☐  
OTHER: ☐

13. Describe proposed or completed operations. (Clearly state all pertinent details, and give pertinent dates, including estimated date of starting any proposed work). SEE RULE 1103. For Multiple Completions: Attach wellbore diagram of proposed completion or recompletion.

SEE ATTACHED WELLBORE DIAGRAMS AND PROPOSED PLUGGING PROCEDURE

THE OIL CONSERVATION DIVISION MUST  
BE NOTIFIED 24 HOURS PRIOR TO THE  
BEGINNING OF PLUGGING OPERATIONS.



I hereby certify that the information above is true and complete to the best of my knowledge and belief. I further certify that any pit or below-grade tank has been/will be constructed or closed according to NMOCD guidelines ☒, a general permit ☐ or an (attached) alternative OCD-approved plan ☐.

SIGNATURE James F. Newman TITLE James F. Newman, P.E. (Triple N Services) DATE 07/16/06

Type or print name James F. Newman E-mail address: jim@triplenservices.com Telephone No. 432-687-1994

For State Use Only

APPROVED BY: Harry W. Wink OC FIELD REPRESENTATIVE II/STAFF MANAGER  
Conditions of Approval (if any):          TITLE          DATE         

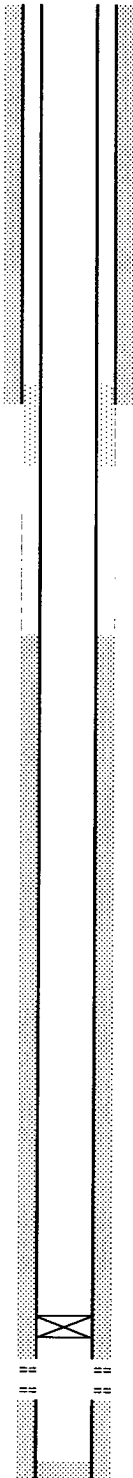
JUL 19 2006

# WELLBORE SKETCH

ConocoPhillips Company -- Permian Basin Business Unit

Date: May 25, 2006

RKB @ 3962'  
DF @  
GL @ 3949'



12-1/4" Hole

Casing leak @ 1,142 - 1,232'

Top Salt @ +/- 1,637'  
8-5/8" 24# JS @ 1,697' w/ 640 sx, circ

Casing leak @ 1700' - Sqz'd w/300 sx \*8/80)  
- Sqz'd w/20 sx (4/01)

TOC 4-1/2" csg @ 2,700' by T.S.

Base of Salt @ +/- 3,200'

7-7/8" Hole

CIBP @ 6,100'  
Glorieta  
6120-6125  
6132-6142

4-1/2" csg @ 6,250' w/ 800 sx  
9.5# J-55 5766.06'  
10.5# J-55 469.78'

PBTD: 6100'  
TD: 6250'

Subarea : Buckeye  
Lease & Well No. : Vacuum Glorieta East Unit, Tract 40 Well No. 1  
Legal Description : 2130' FNL & 1980' FWL, Sec. 28, T-17-S, R-35-E  
County : Lea State : New Mexico  
Field : Vacuum Glorieta  
Date Spudded : Sept. 19, 1964 Rig Released: Oct. 9, 1964  
API Number : 30-025-20798  
Status : Temporarily Abandoned  
Drilled as Santa Fe 104

## Stimulation History:

Interval	Date	Type	Gals	Lbs. Sand	Max Press	ISIP	Max Rate
6120-6142	10/13/64	Perf 2 jspf 6120-6142 (select fire), total 30 holes					
	10/14/64	15% Acid	1,000		1850	650	2.1
	3/14/66	IPF 418 BO, 11 BW, GOR 803					
6120-6142	3/28/80	15% NE HCl	1,500	32 BS	3900	0	5.5
	8/6/80	Perf @ 1700' w/4 jspf, squeeze casing leak w/300 sx regular cement from 1606'-1700'					
6120-6142	9/30/87	15% NE HCl	3,000	60 BS	0	0	2.0
	12/10/93	Casing integrity test showed csg leak 1142'-1232'					
	1/27/94	Locate leak 10' from surface					
	6/1/94	Set CIBP @ 6100', circ with packer fluid					
		Temporarily Abandoned					
	3/29/01	Clean out fill from 6041'-6099'					
	4/2/01	Isolate leak @ 1700'					
	4/4/01	Squeeze casing leak with 20 sx cement					
	5/2006	Failed MIT - Decision made 5/24/06 to reactivate					
		Cumulative production 444 MBO, 281 MMCF, 234 MBW					

## Formation Tops:

Rustler	
Top Salt	+/- 1637'
Yates	2890'
Seven Rivers	
Base Salt	+/- 3200'
Queen	3733'
Grayburg	4020'
San Andres	4424'
Glorieta	6002'

## ConocoPhillips

### Proposed Plugging Procedure

#### Vacuum Glorieta East Unit #40-01

#### Vacuum Glorieta Field

#### Lea County, New Mexico

Casings: 8<sup>5</sup>/<sub>8</sub>" 24# casing @ 1,697' cmt'd w/ 640 sx, circulated  
4<sup>1</sup>/<sub>2</sub>" 9.5# casing @ 6,250' cmt'd w/ 800 sx, TOC 2,700' calculated  
perforations 6,121 – 6,168'

- TA'd w/ CIBP set @ 6,100'
  - Casing leak @ 1,142 – 1,232'
  - Casing leak @ 1,700. Sqz'd w/ 300 sx (8/80); sqz'd w/ 20 sx (4/01)
  - Notify BLM & NMOCD 48 hrs prior to move in, and 4 hrs prior to plugs
  - Hold daily tailgate safety meetings w/ crews
  - Contact NM Digtess (1-800-321-2537, Account # 6778) minimum 48 hrs prior to move-in
1. Set steel pit and flow down well as needed. MIRU plugging equipment. ND wellhead and NU 6" 5,000# hydraulic BOP.
  2. RIH w/ 2<sup>3</sup>/<sub>8</sub>" workstring to CIBP @ 6,100'. RU cementer and circulate hole w/ 10 ppg plugging mud, pump 25 sx C cmt (1.32 ft<sup>3</sup>/sk yield, 33.0 ft<sup>3</sup> slurry volume, calculated fill 362' in 4<sup>1</sup>/<sub>2</sub>" 9.5# casing) 6,100 – 5,738'. **Glorieta- plug**
  3. POOH w/ tubing to 4,020' and pump 25 sx C cmt (1.32 ft<sup>3</sup>/sk yield, 33.0 ft<sup>3</sup> slurry volume, calculated fill 362' in 4<sup>1</sup>/<sub>2</sub>" 9.5# casing) 4,020 – 3,658'. POOH w/ tubing. **Grayburg-San Andres plug**
  4. POOH w/ tubing to 3,300' and pump 25 sx C cmt (1.32 ft<sup>3</sup>/sk yield, 33.0 ft<sup>3</sup> slurry volume, calculated fill 362' in 4<sup>1</sup>/<sub>2</sub>" 9.5# casing) 3,300 – 2,938'. POOH w/ tubing. **Base of salt plug**
  5. RU lubricator and RIH w/ wireline, perforate 4<sup>1</sup>/<sub>2</sub>" casing @ 1,747' w/ four 1-11/16" link-jet charges. POOH w/ wireline.
  6. RIH w/ AD-1 packer to 1,200'. Load hole w/ mud, set packer, and establish rate into perforations at 1,500 psi or less. Squeeze 75 sx C cmt w/ 2% CaCl<sub>2</sub> (1.32 ft<sup>3</sup>/sk yield, 99.0 ft<sup>3</sup> slurry volume, calculated fill 293' in 7<sup>7</sup>/<sub>8</sub>" open hole) 1,747 – 1,454'. WOC & tag this plug no deeper than 1,537' **Top of Salt & surface casing shoe plug**
  7. RU lubricator and RIH w/ wireline, perforate 4<sup>1</sup>/<sub>2</sub>" casing @ 400' w/ four 1-11/16" link-jet charges. POOH w/ wireline.
  8. RIH w/ AD-1 packer to 200'. Load hole w/ mud, set packer, and establish rate into perforations at 1,000 psi or less. Squeeze 40 sx C cmt w/ 2% CaCl<sub>2</sub> (1.32 ft<sup>3</sup>/sk yield, 52.8 ft<sup>3</sup> slurry volume, calculated fill 148' in 8<sup>5</sup>/<sub>8</sub>" 24# casing) 400 – 250'. **freshwater plug**

9. RU lubricator and RIH w/ wireline, perforate 4½" casing @ 50' w/ four 1-11/16" link-jet charges. POOH w/ wireline.
10. ND BOP & NU wellhead. Establish circulation in 4½ x 8⅝" annulus via perforations @ 50', circulate 20 sx C cmt (1.32 ft<sup>3</sup>/sk yield, 26.4 ft<sup>3</sup> slurry volume, calculated fill 74' in 8⅝" 24# casing) 50' to surface. **surface plug**
11. RDMO location.
12. Clean steel pit & haul fluids to disposal. Cut off wellhead and anchors, install dry hole marker. Level location. Leave location clean and free of trash.

# **PROPOSED PLUGGED WELLBORE SKETCH** ConocoPhillips Company -- Permian Basin Business Unit

Date: July 16, 2006

RKB @ 3962'  
 DF @  
 GL @ 3949'

Subarea : Buckeye  
 Lease & Well No. : Vacuum Glorieta East Unit, Tract 40 Well No. 1  
 Legal Description : 2130' FNL & 1980' FWL, Sec. 28, T-17-S, R-35-E  
 County : Lea State : New Mexico  
 Field : Vacuum Glorieta  
 Date Spudded : Sept. 19, 1964 Rig Released: Oct. 9, 1964  
 API Number : 30-025-20798  
 Status: Proposed Plugged  
 Drilled as Santa Fe 104

## **Stimulation History:**

Interval	Date	Type	Gals	Lbs. Sand	Max Press	ISIP	Max Rate
<b>Perf 2 jspf 6120-6142 (select fire), total 30 holes</b>							
6120-6142	10/13/64	15% Acid	1,000		1850	650	2.1
	10/14/64	IPF 418 BO, 11 BW, GOR 803					
6120-6142	3/14/66	15% NE HCl	1,500	32 BS	3900	0	5.5
<b>Perf @ 1700' w/4 jspf, squeeze casing leak w/300 sx regular cement from 1606'-1700'</b>							
6120-6142	9/30/87	15% NE HCl	3,000	60 BS	0	0	2.0
	12/10/93	Casing integrity test showed csg leak 1142'-1232'					
	1/27/94	Locate leak 10' from surface					
	6/1/94	Set CIBP @ 6100', circ with packer fluid					
<b>Temporarily Abandoned</b>							
	3/29/01	Clean out fill from 6041'-6099'					
	4/2/01	Isolate leak @ 1700'					
	4/4/01	Squeeze casing leak with 20 sx cement					
	5/2006	Failed MIT - Decision made 5/24/06 to reactivate					
Cumulative production 444 MBO, 281 MMCF, 234 MBW							



## **PROPOSED PLUGGING PROCEDURE**

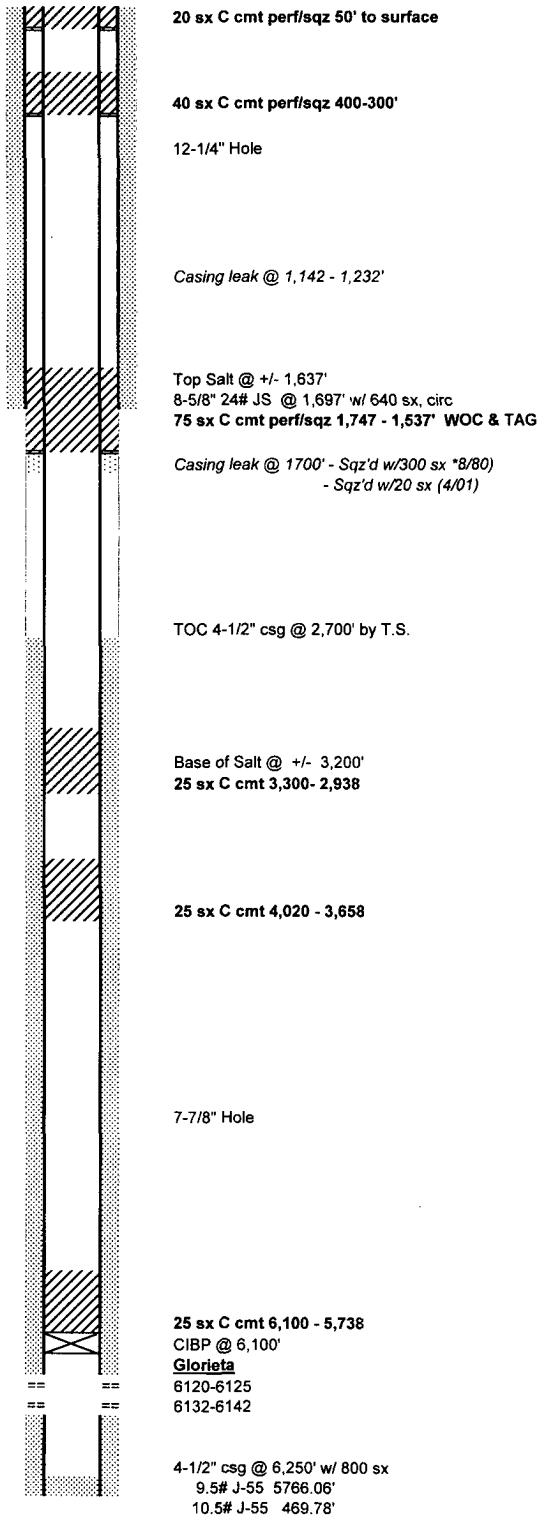
- 1) 25 sx C cmt 6,100 - 5,738'
- 2) 25 sx C cmt 4,020 - 3,658'
- 3) 25 sx C cmt 3,300 - 2,938'
- 4) 75 sx C cmt perf/sqz 1,747 - 1,537' WOC & TAG
- 5) 40 sx C cmt perf/sqz 400 -300'
- 6) 20 sx C cmt perf/sqz 50' to surface

## **Capacities**

4-1/2" 9.5# csg:	10.960 ft/R3	0.0912 ft3/ft
5-1/2" 17# csg:	7.661 ft/R3	0.1305 ft3/ft
7" 20# csg:	4.399 ft/R3	0.2273 ft3/ft
7" 24# csg:	4.567 ft/R3	0.2189 ft3/ft
7-5/8" 26.4# csg:	3.775 ft/R3	0.2648 ft3/ft
8-5/8" 24# csg:	2.797 ft/R3	0.3575 ft3/ft
9-5/8" 36# csg:	2.304 ft/R3	0.4340 ft3/ft
13-3/8" 48# csg:	1.134 ft/R3	0.8817 ft3/ft
7-7/8" openhole:	2.957 ft/R3	0.3382 ft3/ft
8-3/4" openhole:	2.395 ft/R3	0.4176 ft3/ft
11" openhole:	1.515 ft/R3	0.66 ft3/ft

## **Formation Tops:**

Rustler	+/- 1637'
Top Salt	2890'
Yates	
Seven Rivers	
Base Salt	+/- 3200'
Queen	3733'
Grayburg	4020'
San Andres	4424'
Glorieta	6002'



PBTD: 6100'  
 TD: 6250'