

DISTRICT I
1625 N. FRENCH DR., HOBBS, NM 88240

State of New Mexico
Energy, Minerals and Natural Resources Department

DISTRICT II
1301 W. GRAND AVENUE, ARTESIA, NM 88210

DISTRICT III
1000 Rio Brazos Rd., Aztec, NM 87410

DISTRICT IV
1220 S. ST. FRANCIS DR., SANTA FE, NM 87505

OIL CONSERVATION DIVISION
1220 SOUTH ST. FRANCIS DR.
Santa Fe, New Mexico 87505

Form C-102
Revised October 12, 2005
Submit to Appropriate District Office
State Lease - 4 Copies
Fee Lease - 3 Copies

WELL LOCATION AND ACREAGE DEDICATION PLAT

☐ AMENDED REPORT

API Number 30-025-38019	Pool Code 47090	Pool Name Monument Sub
Property Code 29957	Property Name LR KERSHAW	Well Number 16
OGRID No. 4323	Operator Name CHEVRON U.S.A. INC.	Elevation 3557'

Surface Location

UL or lot No.	Section	Township	Range	Lot Idn	Feet from the	North/South line	Feet from the	East/West line	County
A	13	20-S	37-E		990	NORTH	500	EAST	LEA

Bottom Hole Location If Different From Surface

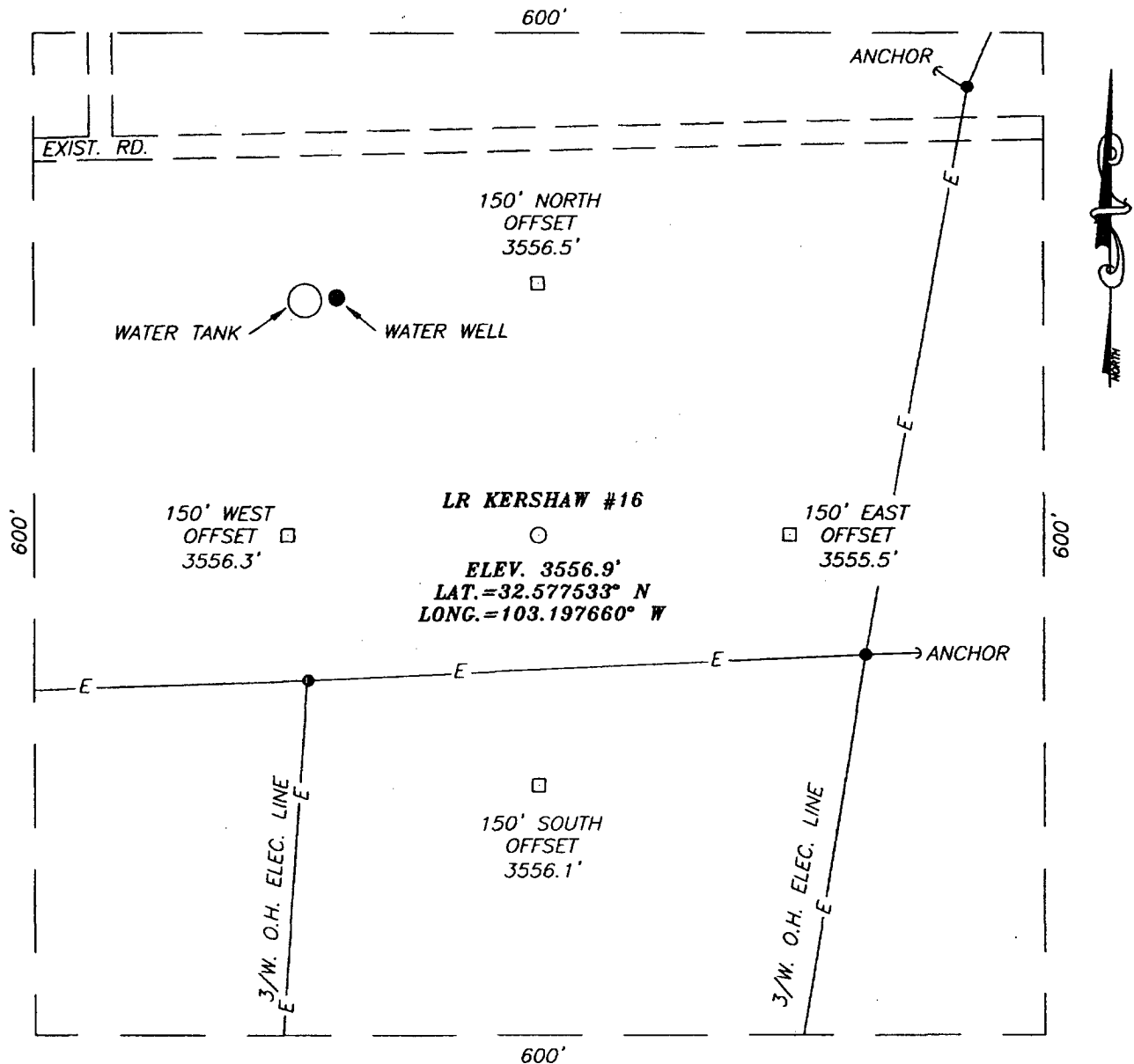
UL or lot No.	Section	Township	Range	Lot Idn	Feet from the	North/South line	Feet from the	East/West line	County

Dedicated Acres 80	Joint or Infill	Consolidation Code	Order No.
------------------------------	-----------------	--------------------	-----------

NO ALLOWABLE WILL BE ASSIGNED TO THIS COMPLETION UNTIL ALL INTERESTS HAVE BEEN CONSOLIDATED
OR A NON-STANDARD UNIT HAS BEEN APPROVED BY THE DIVISION

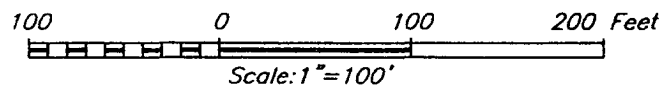
<div><p>GEODETIC COORDINATES NAD 27 NME</p><p>Y=575685.5 N X=849837.9 E</p><p>LAT.=32.577533° N LONG.=103.197660° W</p></div>	<div><p>OPERATOR CERTIFICATION</p><p>I hereby certify that the information herein is true and complete to the best of my knowledge and belief, and that this organization either owns a working interest or unleased mineral interest in the land including the proposed bottom hole location or has a right to drill this well at this location pursuant to a contract with an owner of such mineral or working interest, or to a voluntary pooling agreement or a compulsory pooling order heretofore entered by the division.</p><p>Denise Pinkerton 7-21-06 Signature Date DENISE PINKERTON Printed Name</p><p>SURVEYOR CERTIFICATION</p><p>I hereby certify that the well location shown on this plat was plotted from field notes of actual surveys made by me or under my supervision, and that the same is true and correct to the best of my belief.</p><p>JUNE 19, 2006</p><p>Date Surveyed MR</p><p>Signature & Seal of Professional Surveyor</p><p>Ronald J. Edson 6/28/06 6.11.10230</p><p>Certificate No. GARY EIDSON 12641 RONALD J. EIDSON 3239</p></div>
--	--

SECTION 13, TOWNSHIP 20 SOUTH, RANGE 37 EAST, N.M.P.M.,
 LEA COUNTY, NEW MEXICO



DIRECTIONS TO LOCATION

FROM THE INTERSECTION OF ST. HWY. #8 AND CO. RD. H-45 (BILLY WALKER RD.), GO EAST ON BILLY WALKER ROAD APPROX. 1.8 MILES. TURN RIGHT AND GO SOUTH APPROX. 0.7 MILES. VEER LEFT AND GO EAST APPROX. 1.0 MILE. TURN RIGHT AND GO SOUTH APPROX. 0.6 MILES. TURN LEFT AND GO EAST APPROX. 0.7 MILES. TURN RIGHT AND GO SOUTH APPROX. 0.6 MILES. TURN LEFT AND GO EAST APPROX. 0.45 MILES. THIS LOCATION IS APPROX. 200 FEET SOUTH.



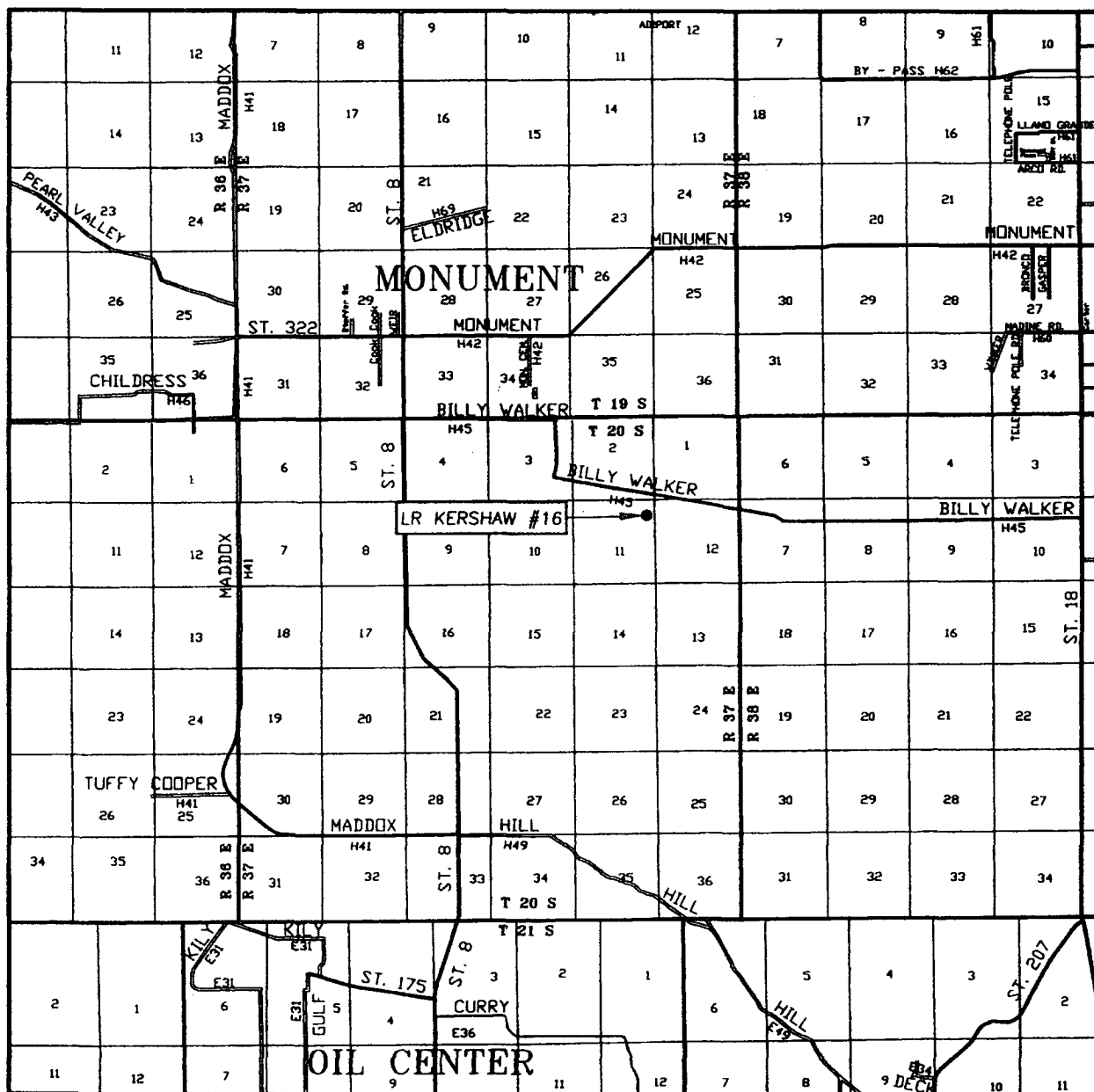
CHEVRON U.S.A. INC.

LR KERSHAW #16
 LOCATED 990 FEET FROM THE NORTH LINE
 AND 500 FEET FROM THE EAST LINE OF SECTION 13,
 TOWNSHIP 20 SOUTH, RANGE 37 EAST, N.M.P.M.,
 LEA COUNTY, NEW MEXICO.

Survey Date: 06/19/06	Sheet 1 of 1 Sheets
W.O. Number: 06.11.1023	Dr By: M.R.
Date: 06/28/06	Disk: CD#6
06111023	Scale: 1"=100'

PROVIDING SURVEYING SERVICES
 SINCE 1846
JOHN WEST SURVEYING COMPANY
 412 N. DAL PASO
 HOBBS, N.M. 88240
 (505) 393-3117

VICINITY MAP



SCALE: 1" = 2 MILES

SEC. 13 TWP. 20-S RGE. 37-E

SURVEY N.M.P.M.

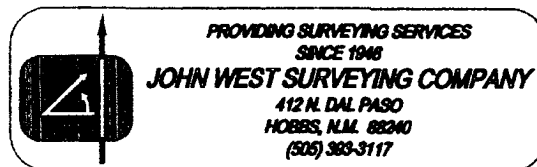
COUNTY LEA STATE NEW MEXICO

DESCRIPTION 990' FNL & 500' FEL

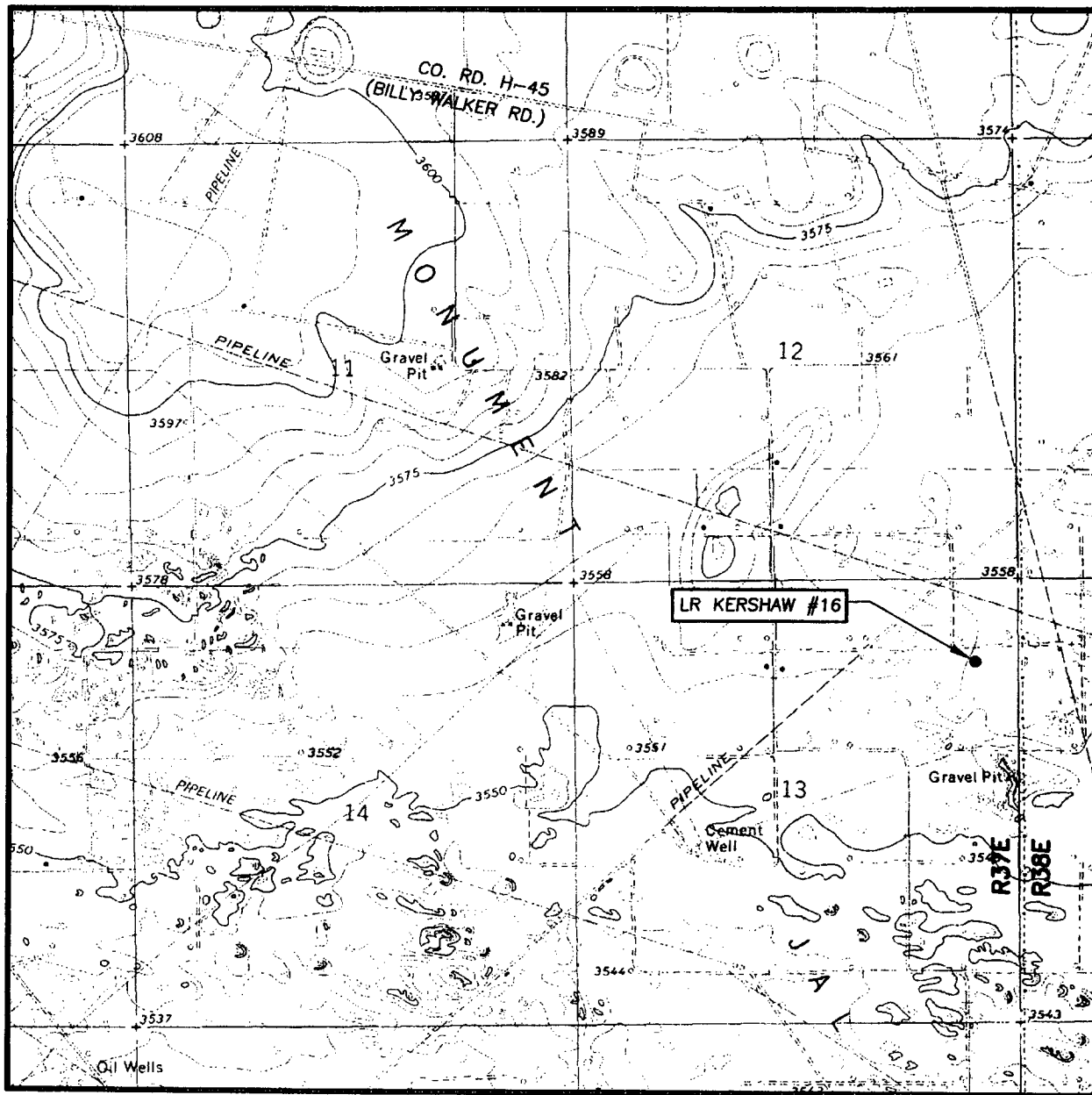
ELEVATION 3557'

OPERATOR CHEVRON U.S.A. INC.

LEASE LR KERSHAW



LOCATION VERIFICATION MAP



SCALE: 1" = 2000'

CONTOUR INTERVAL:
HOBBS SW, N.M. - 5'

SEC. 13 TWP. 20-S RGE. 37-E

SURVEY N.M.P.M.

COUNTY LEA STATE NEW MEXICO

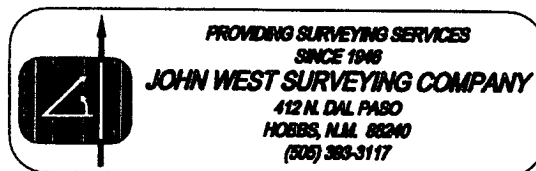
DESCRIPTION 990' FNL & 500' FEL

ELEVATION 3557'

OPERATOR CHEVRON U.S.A. INC.

LEASE LR KERSHAW

U.S.G.S. TOPOGRAPHIC MAP
HOBBS SW, N.M.



PROVIDING SURVEYING SERVICES
SINCE 1948

JOHN WEST SURVEYING COMPANY

412 N. DAL PASO
HOBBS, N.M. 88240
(505) 383-3117