

Submit 3 Copies To Appropriate District Office  
District I  
1625 N. French Dr., Hobbs, NM 88240  
District II  
1301 W. Grand Ave., Artesia, NM 88210  
District III  
1000 Rio Brazos Rd., Aztec, NM 87410  
District IV  
1220 S. St. Francis Dr., Santa Fe, NM 87505

State of New Mexico  
Energy, Minerals and Natural Resources

Form C-103  
May 27, 2004

OIL CONSERVATION DIVISION  
1220 South St. Francis Dr.  
Santa Fe, NM 87505

WELL API NO. 30-025-03469
5. Indicate Type of Lease STATE <input checked="" type="checkbox"/> FEE <input type="checkbox"/>
6. State Oil & Gas Lease No. NM B-1167
7. Lease Name or Unit Agreement Name State H
8. Well Number 7
9. OGRID Number 004537
10. Pool name or Wildcat Eumont Yates Seven Rivers Queen

SUNDRY NOTICES AND REPORTS ON WELLS  
(DO NOT USE THIS FORM FOR PROPOSALS TO DRILL OR TO DEEPEN OR PLUG BACK TO A DIFFERENT RESERVOIR. USE "APPLICATION FOR PERMIT" (FORM C-101) FOR SUCH PROPOSALS.)

1. Type of Well: Oil Well <input type="checkbox"/> Gas Well <input checked="" type="checkbox"/> Other
2. Name of Operator Citation Oil & Gas Corp.
3. Address of Operator P O Box 690688, Houston, Texas 77269

4. Well Location Unit Letter <u>J</u> : <u>1980</u> feet from the <u>South</u> line and <u>1980</u> feet from the <u>East</u> line Section <u>13</u> Township <u>21S</u> Range <u>35E</u> NMPM Lea County	11. Elevation (Show whether DR, RKB, RT, GR, etc.) 3595 DF
---	---

Pit or Below-grade Tank Application ☐ or Closure ☐

Pit type \_\_\_\_\_ Depth to Groundwater \_\_\_\_\_ Distance from nearest fresh water well \_\_\_\_\_ Distance from nearest surface water \_\_\_\_\_  
Pit Liner Thickness: \_\_\_\_\_ mil Below-Grade Tank: Volume \_\_\_\_\_ bbls; Construction Material \_\_\_\_\_

12. Check Appropriate Box to Indicate Nature of Notice, Report or Other Data

NOTICE OF INTENTION TO:

PERFORM REMEDIAL WORK ☐ PLUG AND ABANDON ☐  
TEMPORARILY ABANDON ☐ CHANGE PLANS ☐  
PULL OR ALTER CASING ☐ MULTIPLE COMPL ☐

SUBSEQUENT REPORT OF:

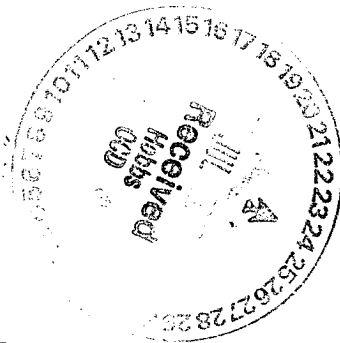
REMEDIAL WORK ☐ ALTERING CASING ☐  
COMMENCE DRILLING OPNS. ☐ P AND A ☐  
CASING/CEMENT JOB ☐

OTHER: Recomplete to Yates Seven Rivers ☒

OTHER: ☐

13. Describe proposed or completed operations. (Clearly state all pertinent details, and give pertinent dates, including estimated date of starting any proposed work). SEE RULE 1103. For Multiple Completions: Attach wellbore diagram of proposed completion or recompletion.

Citation Oil & Gas Corp. proposes to recomplete this well to the Yates Seven Rivers per attached procedures under NMOCDC order SD-05-05.



I hereby certify that the information above is true and complete to the best of my knowledge and belief. I further certify that any pit or below-grade tank has been/will be constructed or closed according to NMOCDC guidelines ☐, a general permit ☐ or an (attached) alternative OCD-approved plan ☐.

SIGNATURE Sharon Ward TITLE Permitting Manager DATE July 19, 2006

Type or print name Sharon Ward

E-mail address: RETROLEUM@petroleum-engineer.com Telephone No. 281-517-7309

For State Use Only

APPROVED BY: [Signature] TITLE \_\_\_\_\_

Conditions of Approval (if any): \_\_\_\_\_

DATE \_\_\_\_\_

AUG 04 2006

## WORKOVER PROCEDURE

PROJECT: State H #7 – OAP and Frac

DRILLED & COMPLETED: 5/54 LAST WO: 2/78: Acidize

LOCATION: 1,980' FSL & 1,980' FEL Section 13; T21S-R35E

FIELD: Eumont COUNTY: Lea STATE: NM

TD: 4,044' PBSD: 3,950' DATUM: 3,595' DF KB: 8'

### CASING AND LINER RECORD

SIZE	WEIGHT	DEPTH	CEMENT	HOLE	TOC	REMARKS
8 5/8"	32 ppf	309'	200 sxs	11"	Surf	Cmt cir'd
5 1/2"	15.5 ppf	3,972'	800 sxs	7 7/8"	500' Calc	TOC calc'd w/ 75% xs

Producing Formation: Queen Perfs / SR: 3,825' – 3,943' (305 shots)

Rods: No rods in hole

Tubing: (1 jnts) 2 3/8" 4.7 ppf J-55 eue 8rd kill string

Note: Squeezed leaks 480' – 576' w/ 100 sxs (1/06) successful; 1,078' – 1,182' w/ 125 sxs – unsuccessful; Re-squeeze f/ 1,087' – 1,150' (2/06) unsuccessful; CIBP @ 3,750' w/ 2 sx cmt on top.

### PROCEDURE

- Notify NMOCD of planned work.
- Use 2% KCl water for all water placed in wellbore.
- RU gas buster pit and flowback manifold using secure steel lines w/ targeted connections.
- Need air unit to clean out after frac - flow back.
- Locate and rack 3800' new 2 3/8" 4.7# J-55 prod tbg.
- Contact Reef Chemical (Gary Hyer – 432-570-7038) to line up 750 gal Gas Plus (375 gal per stage).
- Move pumping unit (Bethlehem 114 – 42") from EF King battery and repair.
- Locate and rack 3,800' 4" UltFJ L-80 casing (Tarpon Pipe – Royce Watkins 432-638-8026). Pipe should have 1 short marker joint to be run 3 jnts off bottom.
- No Drill Plate for 4" inner string.

1. MIRU PU. Kill w/ 2% KCL water if necessary.
2. ND WH. NU BOP.
3. RIH w/ 4 3/4" MT skirted bit and 2 3/8" SN on 2 3/8" 4.7# J-55 prod tbg to 3,730' (Top of CIBP). Tally in hole. POH w/bit.
4. Load hole w/ 2% KCL. RU WL. RIH w/ GR/CBL/CCL and log f/ PBSD to TOC or minimum run (determine TOC). POH w/ logging tools.

5. RIH w/ inner string as follows:  
4" UltFJ float shoe, No Drill plate, 1 jnt 4" UltFJ L-80 csg, 4" UltFJ float collar, 2 jnts 4" UltFJ L-80 csg, 1 jnt 4" UltFJ L-80 Marker jnt (short jnt) and +/- 3,650' 4" UltFJ 10.5 ppf L-80 Inner String (4" OD, 3.476" ID, 3.351" Drift diameter) and tag PBTD (CIBP w/ 20' cmt @ +/- 3,730'). **Pick up inner string 15' off PBTD.**
6. Cement inner string in place as per service company recommendation. Periodically rotate and move string while cementing. Be sure to circulate cement. WOC. (If cement does not circulate - PT 4" x 5 1/2" annulus for NMOCD and run CBL to determine cement top).
7. RIH w/ 3 1/4" skirted bit, 2 1/2" DCs and 2 3/8" SN on 2 3/8" tbg and tag. RU Rev Unit and DO float collar and cement to No Drill plate. RD Rev Unit and POH w/ bit, DCs and 2 3/8" J-55 prod tbg.
8. RU WL w/ full lubricator. RIH w/ GR/CCL and correlate to 5/26/54 Schlumberger GR/Neutron. POH w/ GR/CCL. RIH w/ 2 1/2" csg gun and Perf (stage 1) Seven Rivers w/ 1 SPF Select Fire (0.38" holes) as recommended by Reservoir group.
9. POOH w/ Csg guns.
10. RU hydrotesters and RIH w/ PPI Tool, 2 3/8" SN on 2 3/8" 4.7 ppf J-55 tbg to bottom perf of 1st stage hydrotesting tbg to 5,800 psi (75% of new rating) Straddle target perfs and set PPI tool. Break down w/ 15% AS HCL acid (**Max treating pressure = 4,000 psi**). Rlse PPI tool and proceed to the next group of target perfs repeating the procedure until all Seven Rivers perfs are broken down / treated. (**Note- Record Max and Min pressures, Average injection rate, ISIP and signs of communication for each tool setting-treatment**). POOH w/ PPI tool on 2 3/8" tbg.
11. Frac Seven Rivers perfs down casing as per service company recommendation using CO<sub>2</sub>. Tag w/ IR-192 @ 0.5MC/1M# sand (74 day half-life). Record rates, max and min pressures and SIP's. (**NOTE: Max pressure = 5,000 psi @ 80%. All sand tagged w/ IR-192.**)
12. RU WL w/ lubricator. Lubricate CIBP (for 4" OD casing) in hole and set at +/- 50' above top SR perf. POH.
13. Pressure csg to 500 psi w/ 2% KCL w/ full lubricator. RIH w/ 2 1/2" csg gun. Correlate to Schlumberger 5/26/54 Gamma Ray / Neutron log. Perf (stage 2) Yates w/ 1 SPF Select Fire (0.38" holes) as recommended by the Reservoir group.
14. POH w/ csg guns.
15. RIH w/ PPI Tool, 2 3/8" SN on 2 3/8" 4.7 ppf J-55 tbg to bottom perf of 2<sup>nd</sup> stage. Straddle target perfs and set PPI tool. Break down w/ 15% AS HCL acid (**Max treating pressure = 4,000 psi**). Rlse PPI tool and proceed to the next group of target perfs repeating the procedure until all Yates perfs are broken down / treated. (**Note- Record Max and Min pressures, Average injection rate, ISIP and signs of communication for each tool setting-treatment**). POOH w/ PPI tool on 2 3/8" tbg.
16. Pump (375 Gallons) Reef GAS PLUS down casing as per recommendation. Frac Yates down casing as per service company recommendation using CO<sub>2</sub>. Tag w/ SC-46 @ 0.5MC/1M# sand (84 day half-life). Record rates, max and min pressures and SIP's. (**NOTE: Max pressure = 5,000 psi @ 80%. All sand tagged w/ SC-46.**)
17. Flow well back to gas buster pit using flowback manifold w/ targeted connections and secure steel lines.
18. Kill well w/ 2% KCL if required. RU foam air unit. RIH w/ 3 1/4" MT skirted bit, bit sub, (6) 2 1/2" DC's and SN on 2 3/8" 4.7# J-55 tbg to sand fill (second stage frac sand). CO sand to CIBP. RU power swivel. DO CIBP. RD power swivel.
19. FIH to sand fill (first stage frac sand). CO sand to PBTD @ +/- 3,700'. CHC. RD foam air unit. POH w/ bit and 2 3/8" tbg.

20. RU WL w/ Lubricator. Run After Frac Spectra (dual isotope) GR Log f/ 2,700' - PBTD. POH and RD WL.

21. Run 2 3/8" 4.7 ppf J-55 eue 8rd production tbg string as follows:

QTY TUBING	ITEM	LENGTH	DEPTH
	KB	8'	8'
114	Jts 2 3/8" 4.7# J-55 eue 8rd tbg	3557'	3565'
1	Jt 2 3/8" 4.7# J-55 eue 8rd IPC tbg	31'	3596'
1	2 3/8" SN	1'	3597'
1	2 3/8"x 4' TBG Sub	4'	3601'
1	Cavins D2301G Desander	20'	3621'
2	2 Jts 2 3/8" BPMA	62'	3683'

22. RU Swab. Swab well until clean fluid is produced. RD Swab.

23. Run rod string as follows:

RODS			
1	1 1/4" x 16' PR w/ 1 1/2" x 10' Liner	16'	16'
Set	3/4" KD Rod Subs w/ SM couplings	10' (+/-)	26'
144	3/4" KD Rods w/ SM couplings	3600'	3626'
1	3/4" KD Rod Sub w/ SM couplings	2'	3628'
1	2" x 1 1/4" x 12' RHBC Pump	12'	3640'

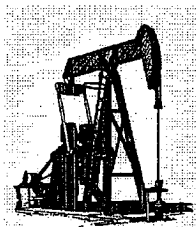
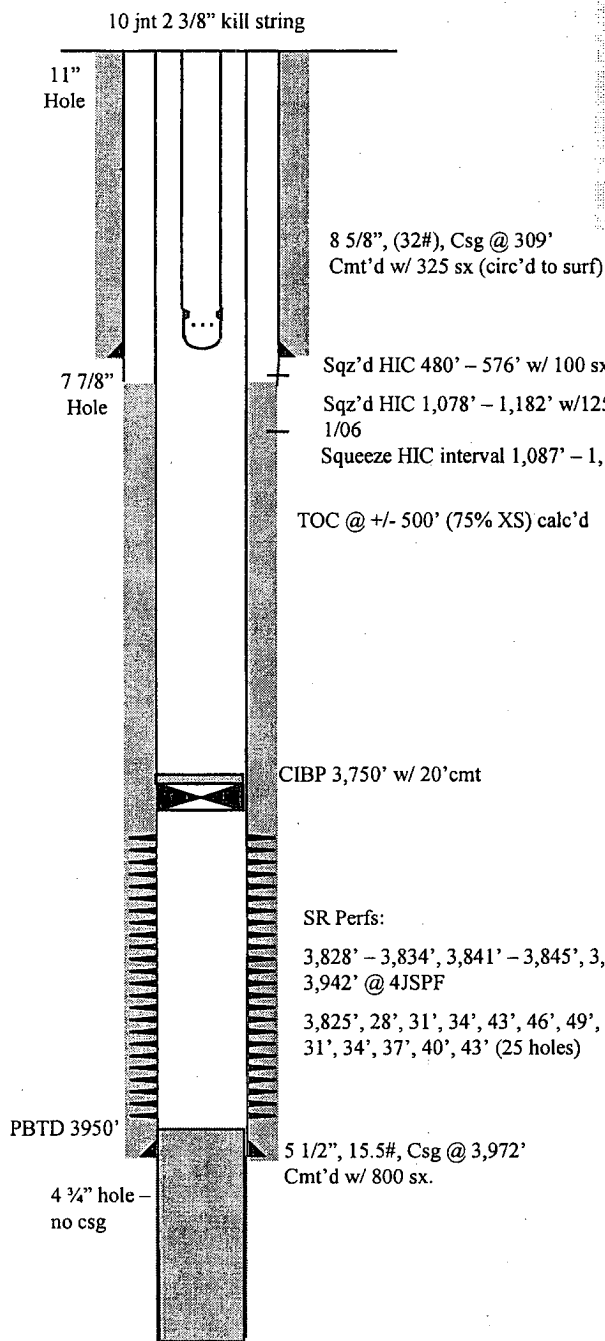
24. Move pumping unit (Bethlehem 114 -?- 42") from EF King battery to State H #7 and repair.

25. Load tbg w 2% KCl and pressure test pump. Space out and hang well on. Place pumping unit in 42" SL at +/- 7 SPM (Expected production rate +/- 43 BFPD @ 100% efficiency and 1 1/4" pump).

26. RD MO PU. Return well to production and place on test.

# CITATION OIL AND GAS CORPORATION CURRENT WELLBORE DIAGRAM AND INFORMATION

Well Name: State H #7 Field: Eumont  
 Date: June 3, 2005 Location: 1980' FSL 1980' FEL Section 13  
 County: Lea State: New Mexico



No Unit

API #: 30-025-03469  
 Surface: 1980' FSL 1980' FEL Section 13, T21S-R35E Lea County, NM  
 Completed: 5/1954  
 Elevation: 3,595' (DF)  
 KB: 8'

## CASING DETAIL

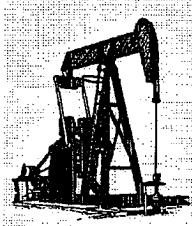
Size	Weight	Depth
8 5/8"	32	Surf - 308'
5 1/2"	15.5	Surf - 3961'

## TUBING DETAIL

Qty	Description	Length	Depth
—	KB	8	8
1	Jts 2 3/8", 4.7#, J-55 tbg	31	39

# CITATION OIL AND GAS CORPORATION PROPOSED WELLBORE DIAGRAM AND INFORMATION

Well Name: State H #7 Field: Eumont  
Date: June 3, 2005 Location: 1980' FSL 1980' FEL Section 13  
County: Lea State: New Mexico



Bethlehem 114 w/ 42" stroke running 7 spm from EF King battery

API #: 30-025-03469  
Surface: 1980' FSL 1980' FEL Section 13, T21S-R35E, Lea County, NM  
Completed: 5/1954  
Elevation: 3,595' (DF)  
KB: 8'

## CASING DETAIL

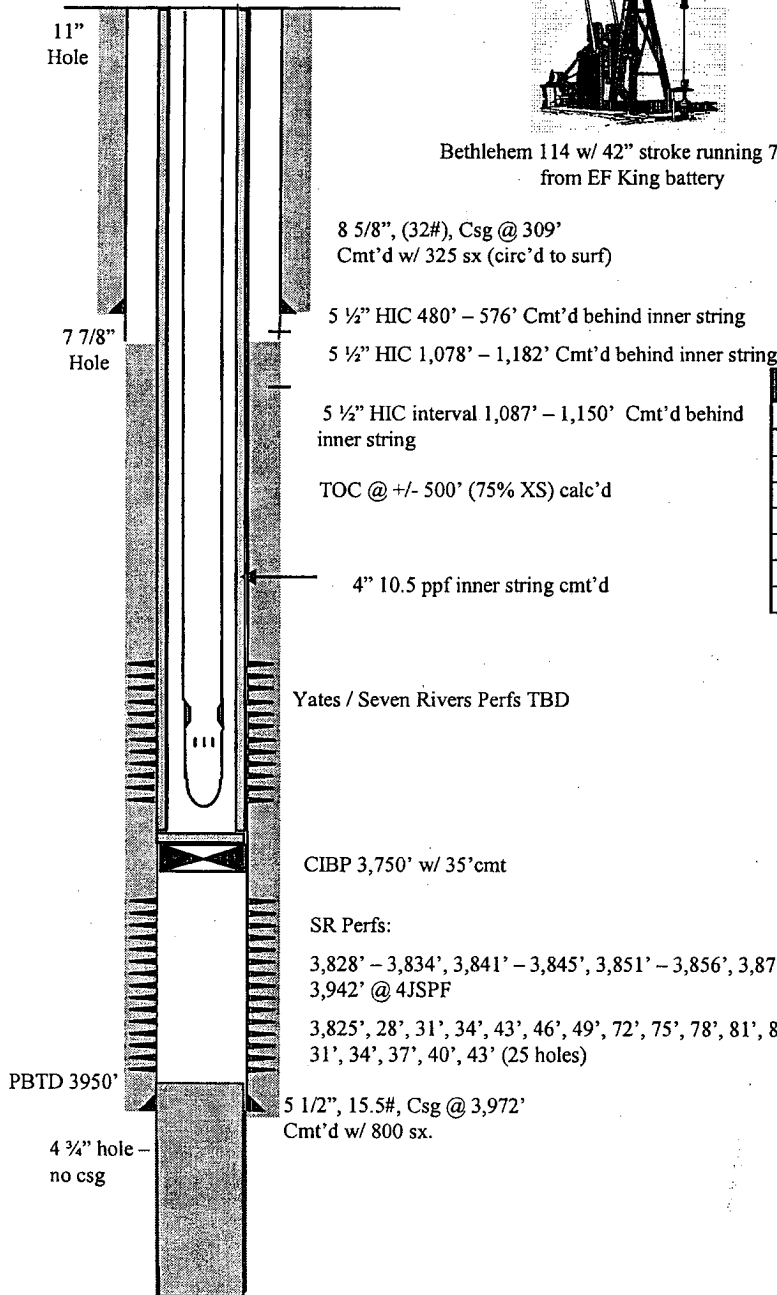
Size	Weight	Depth
8 5/8"	32	Surf - 308'
5 1/2"	15.5	Surf - 3961'
4"	10.5	Surf - 3,700'

## TUBING DETAIL

Qty	Description	Length	Depth
—	KB	8	8
114	Jts 2 3/8", 4.7#, J-55 tbg	3557	3565
1	Jt 2 3/8", 4.7#, J-55 IPC tbg	31	3596
1	2 3/8" SN	1	3597
1	2 3/8" Tbg Sub	4	3601
1	Cavins D2301G Desander	20	3621
2	Jts 2 3/8" BPMA	62	3683

## ROD DETAIL

Qty	Size	Type	Length
1	3/4"	KD Subs	+/- 10
144	3/4"	KD	3,600
1	3/4"	KD Sub	2
Polish Rod: 1 1/4" x 16' w/ 1 1/2" x 10' Liner			
Pump: 2" x 1 1/4" x 12'			



TD @ 4,044'