

DISTRICT I  
1625 N. FRENCH DR., BOBBS, NM 88240

DISTRICT II  
1301 W. GRAND AVENUE, ARTESIA, NM 88210

DISTRICT III  
1000 Rio Brazos Rd., Aztec, NM 87410

DISTRICT IV  
1220 S. ST. FRANCIS DR., SANTA FE, NM 87505

State of New Mexico  
Energy, Minerals and Natural Resources Department

OIL CONSERVATION DIVISION  
1220 SOUTH ST. FRANCIS DR.  
Santa Fe, New Mexico 87505

Form C-102  
Revised JUNE 10, 2003  
Submit to Appropriate District Office  
State Lease - 4 Copies  
Fee Lease - 3 Copies

WELL LOCATION AND ACREAGE DEDICATION PLAT

☐ AMENDED REPORT

API Number 30-025-38054	Pool Code 50350/96601	Penrose 5 Kelly Grayburg / San Andres East	Pool Name Hare
Property Code 23112	Property Name SOUTHLAND ROYALTY A		Well Number 25
OGED No. 873	Operator Name APACHE CORPORATION		Elevation 3472'

Surface Location

UL or lot No.	Section	Township	Range	Lot Idn	Feet from the	North/South line	Feet from the	East/West line	County
A	9	21-S	37-E		170	NORTH	1260	EAST	LEA

Bottom Hole Location If Different From Surface

UL or lot No.	Section	Township	Range	Lot Idn	Feet from the	North/South line	Feet from the	East/West line	County
Dedicated Acres 40		Joint or Infill	Consolidation Code	Order No. NSL-5385 <SD>					

NO ALLOWABLE WILL BE ASSIGNED TO THIS COMPLETION UNTIL ALL INTERESTS HAVE BEEN CONSOLIDATED  
OR A NON-STANDARD UNIT HAS BEEN APPROVED BY THE DIVISION

SECTION 4		SECTION 9	
GEODETIC COORDINATES NAD 27 NME  Y=547627.7 N X=860802.6 E  LAT.=32°30'00.35" N LONG.=103°09'47.06" W			
		170'	
		1260'	

OPERATOR CERTIFICATION

I hereby certify the the information contained herein is true and complete to the best of my knowledge and belief.

*Lana Williams*  
Signature  
Lana Williams  
Printed Name  
Eng. Tech  
Title  
8/1/06  
Date

SURVEYOR CERTIFICATION

I hereby certify that the well location shown on this plat was plotted from field notes of actual surveys made by me or under my supervision and that the same is true and correct to the best of my belief.

NOVEMBER 30, 2005

Date Surveyed  
Signature & Seal of Professional Surveyor  
GARY A. EIDSON 12/9/05  
05.11.1817  
Certificate No. RONALD J. EIDSON 3239  
GARY EIDSON 12641

## DISTRICT I

1626 N. FRENCH DR., HOHES, NM 88240

## DISTRICT II

1301 W. GRAND AVENUE, ARTESIA, NM 88210

## DISTRICT III

1000 Rio Brazos Rd., Aztec, NM 87410

## DISTRICT IV

1220 S. ST. FRANCIS DR., SANTA FE, NM 87505

## State of New Mexico

Energy, Minerals and Natural Resources Department

## OIL CONSERVATION DIVISION

1220 SOUTH ST. FRANCIS DR.  
Santa Fe, New Mexico 87505

Form C-102

Revised JUNE 10, 2003

Submit to Appropriate District Office

State Lease - 4 Copies

Fee Lease - 3 Copies

## WELL LOCATION AND ACREAGE DEDICATION PLAT

☐ AMENDED REPORT

API Number	Pool Code	Pool Name
Property Code	Property Name <b>SOUTHLAND ROYALTY A</b>	Well Number <b>25</b>
OGRD No.	Operator Name <b>APACHE CORPORATION</b>	Elevation <b>3472'</b>

## Surface Location

UL or lot No.	Section	Township	Range	Lot Idn	Feet from the	North/South line	Feet from the	East/West line	County
A	9	21-S	37-E		170	NORTH	1260	EAST	LEA

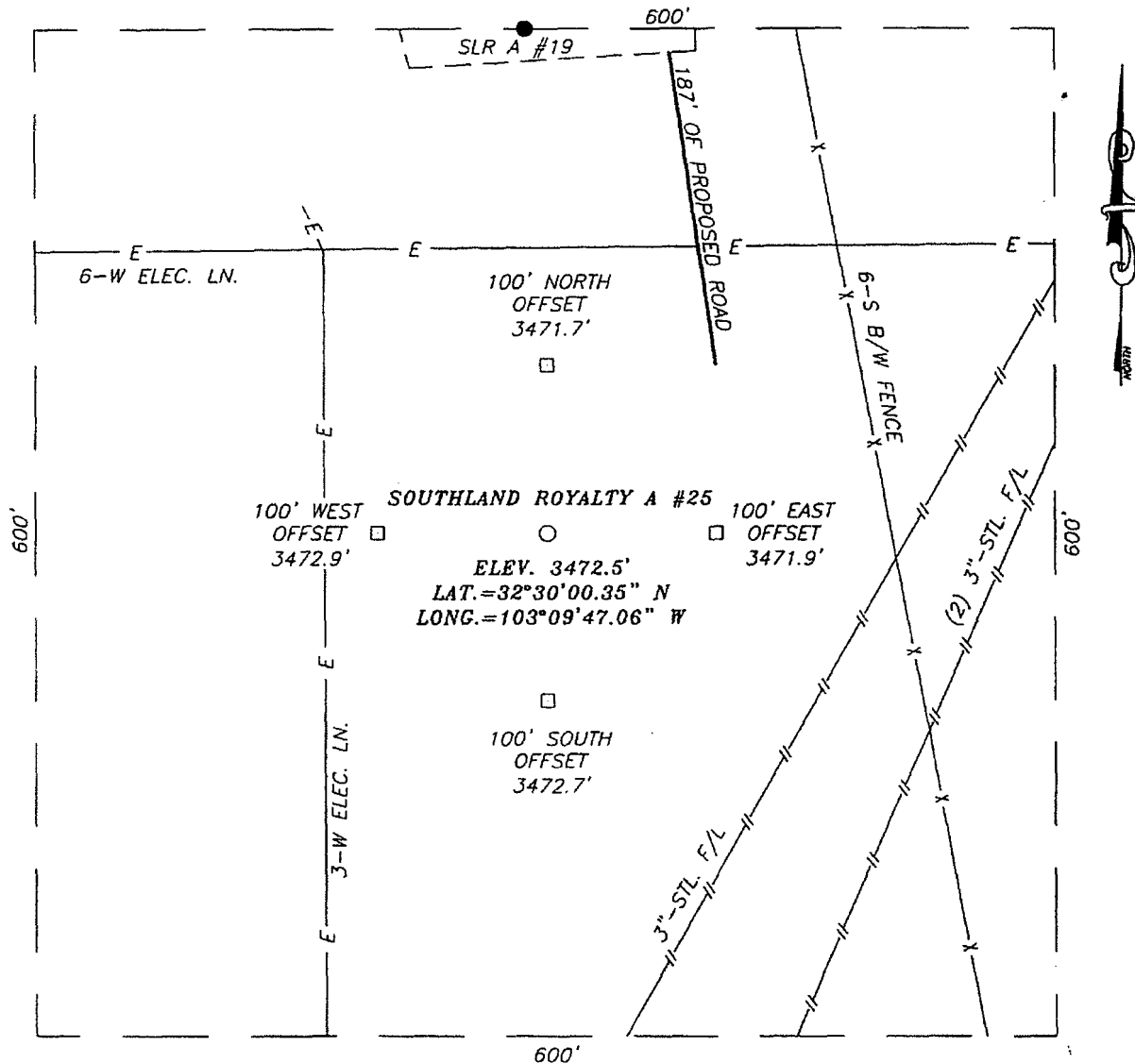
## Bottom Hole Location If Different From Surface

UL or lot No.	Section	Township	Range	Lot Idn	Feet from the	North/South line	Feet from the	East/West line	County
Dedicated Acres	Joint or Infill	Consolidation Code	Order No.						

NO ALLOWABLE WILL BE ASSIGNED TO THIS COMPLETION UNTIL ALL INTERESTS HAVE BEEN CONSOLIDATED  
OR A NON-STANDARD UNIT HAS BEEN APPROVED BY THE DIVISION

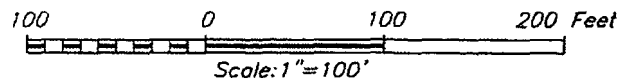
	<b>OPERATOR CERTIFICATION</b>  I hereby certify the the information contained herein is true and complete to the best of my knowledge and belief.  <i>Lana Williams</i> Signature Lana Williams Printed Name Eng. Tech Title 8/1/06 Date
	<b>SURVEYOR CERTIFICATION</b>  I hereby certify that the well location shown on this plat was plotted from field notes of actual surveys made by me or under my supervision and that the same is true and correct to the best of my belief.  NOVEMBER 30, 2005 Date Surveyed JR Signature & Seal of Professional Surveyor
	05.11.1817
	Certificate No. RONALD J. EIDSON 3239 GARY EIDSON 12841

SECTION 9, TOWNSHIP 21 SOUTH, RANGE 37 EAST, N.M.P.M.,  
LEA COUNTY, NEW MEXICO



DIRECTIONS TO LOCATION

FROM THE INTERSECTION OF ST. HWY. #207 AND  
CO. RD. E34 (HILL RD.) GO NORTH ON ST. RD.  
#207 FOR APPROX. 1.0 MILES. TURN LEFT (WEST)  
FOR APPROX. 0.1 MILES. TURN RIGHT (NORTH)  
AND GO APPROX. 0.4 MILES. THIS LOCATION IS  
APPROX. 500' WEST.



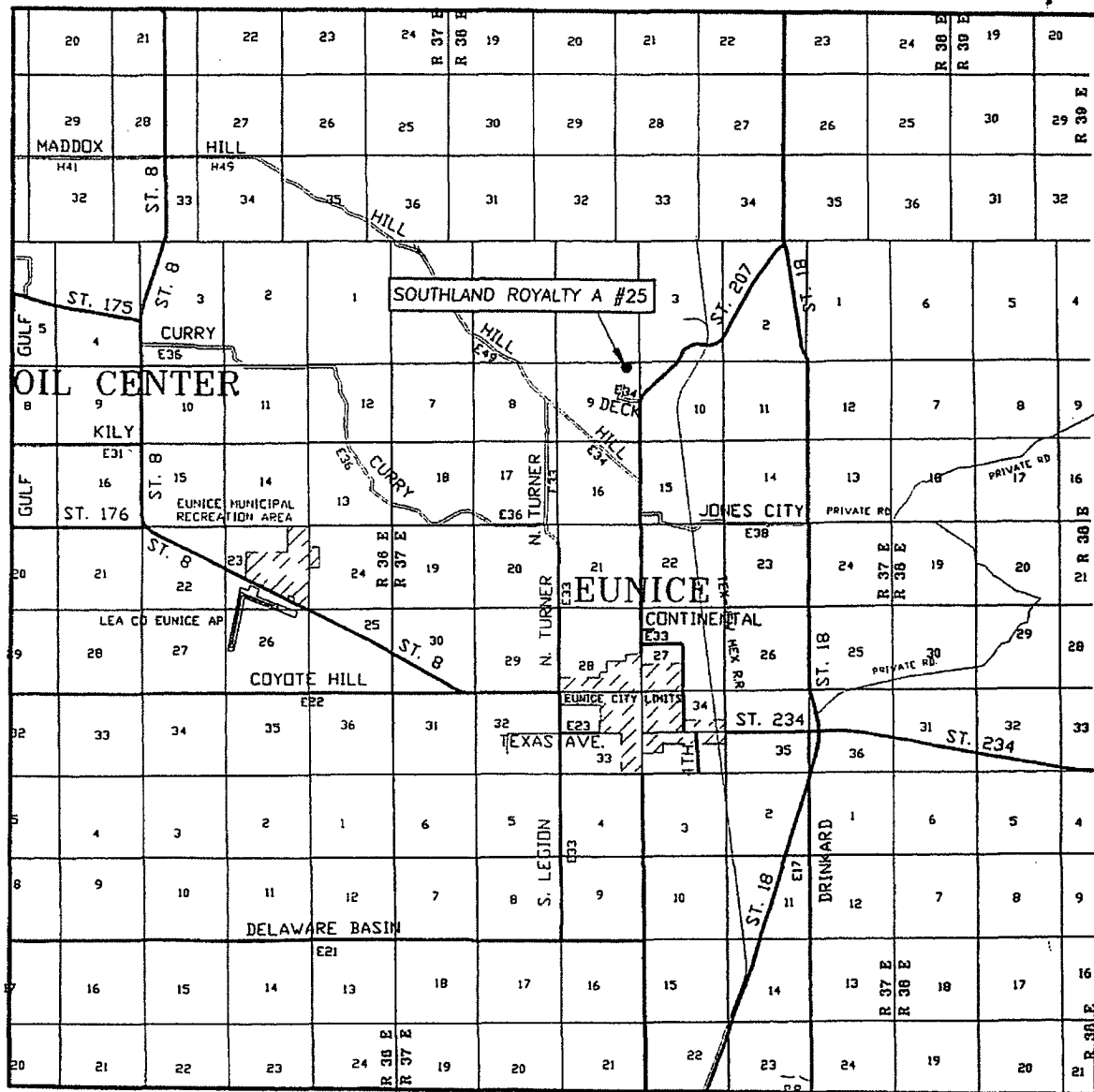
**APACHE CORPORATION**

SOUTHLAND ROYALTY A #25 WELL  
LOCATED 170 FEET FROM THE NORTH LINE  
AND 1260 FEET FROM THE EAST LINE OF SECTION 9,  
TOWNSHIP 21 SOUTH, RANGE 37 EAST, N.M.P.M.,  
LEA COUNTY, NEW MEXICO.

Survey Date: 11/30/05	Sheet 1 of 1 Sheets
W.O. Number: 05.11.1817	Dr By: J.R.
Date: 12/07/05	Rev 1:N/A
Disk: CD#5	05111817
Scale: 1"=100'	

PROVIDING SURVEYING SERVICES  
SINCE 1946  
**JOHN WEST SURVEYING COMPANY**  
412 N. DAL PASO  
HOBBS, N.M. 88240  
(505) 393-3117

# VICINITY MAP



SCALE: 1" = 2 MILES

SEC. 9 TWP. 21-S RGE. 37-E

SURVEY N.M.P.M.

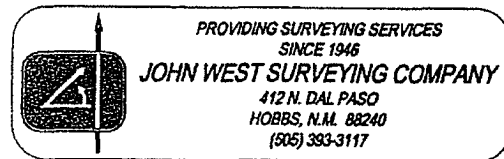
COUNTY LEA

DESCRIPTION 170' FNL & 1260' FEL

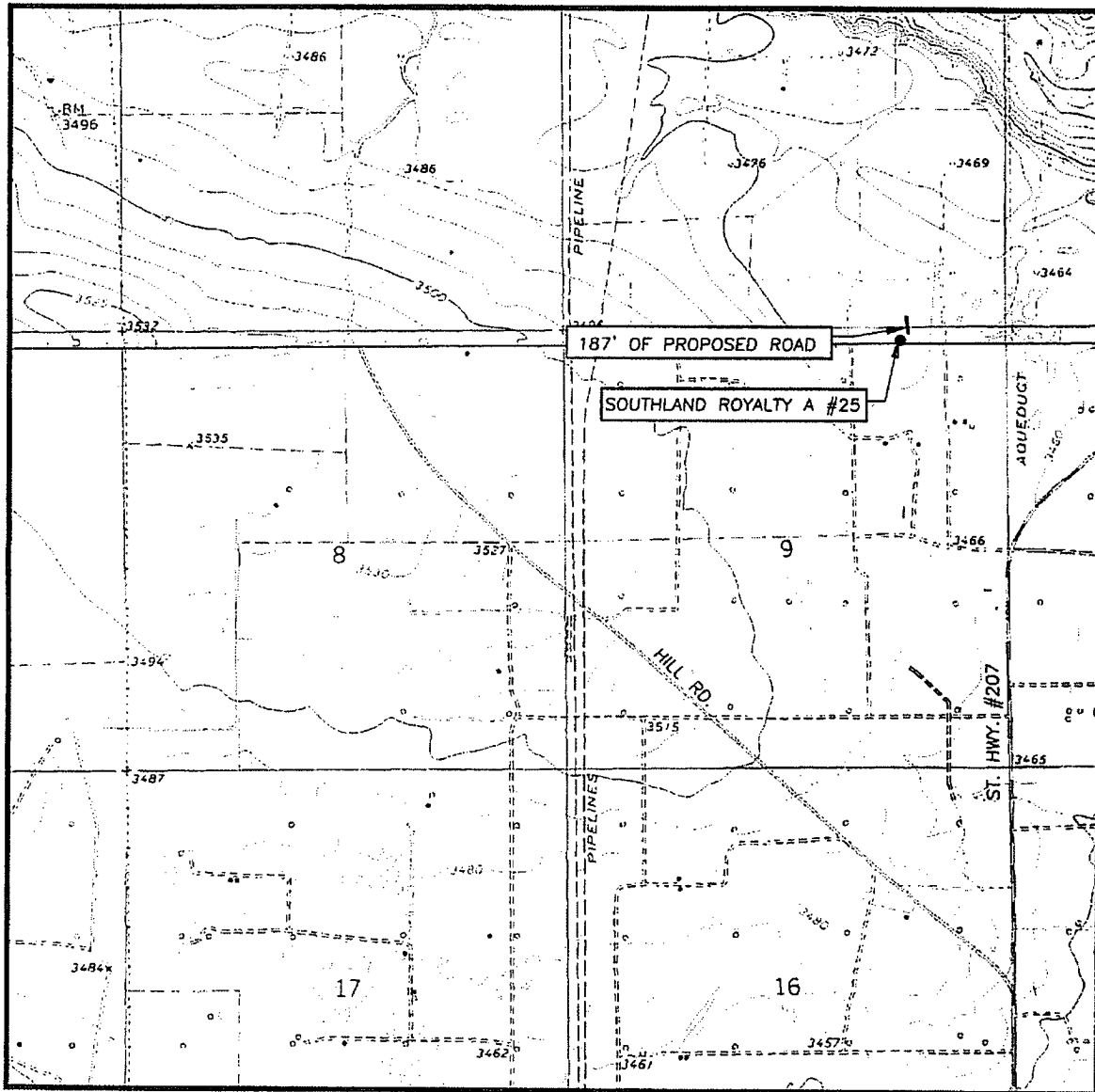
ELEVATION 3472'

OPERATOR APACHE CORPORATION

LEASE SOUTHLAND ROYALTY A



# LOCATION VERIFICATION MAP



SCALE: 1" = 2000'

CONTOUR INTERVAL:  
HOBBS SW, N.M. - 10'  
EUNICE, N.M. - 10'

SEC. 9 TWP. 21-S RGE. 37-E

SURVEY N.M.P.M.

COUNTY LEA

DESCRIPTION 170' FNL & 1260' FEL

ELEVATION 3472'

OPERATOR APACHE CORPORATION

LEASE SOUTHLAND ROYALTY A

U.S.G.S. TOPOGRAPHIC MAP  
HOBBS SW, N.M.

