

## DISTRICT I

P.O. Box 1980, Hobbs, NM 88241-1980

## DISTRICT II

P.O. Box Drawer DD, Artesia, NM 88211-0719

## DISTRICT III

1000 Rio Brazos Rd., Aztec, NM 87410

## DISTRICT IV

P.O. Box 2088, Santa Fe, NM 87504-2088

## State of New Mexico

## Energy, Minerals and Natural Resources Department

## OIL CONSERVATION DIVISION

P.O. Box 2088

Santa Fe, New Mexico 87504-2088

Form C-101

Revised February 10, 1999

Instructions on back

Submit to Appropriate District Office

State Lease - 6 Copies

Fee Lease - 5 Copies

☐ AMENDED REPORT

## APPLICATION FOR PERMIT TO DRILL, RE-ENTER, DEEPEN, PLUGBACK, OR ADD A ZONE

<sup>1</sup> Operator Name and Address CHEVRON USA INC 15 SMITH RD, MIDLAND, TX 79705		<sup>2</sup> OGRID Number 4323
		<sup>3</sup> API Number 30-025-21773
<sup>4</sup> Property Code 11427 29959	<sup>5</sup> Property Name L. VAN ETEN	<sup>6</sup> Well No. 12

<sup>7</sup> Surface Location

UI or lot no.	Section	Township	Range	Lot.Idn	Feet From The	North/South Line	Feet From The	East/West Line	County
O	9	20S	37E		810	SOUTH	2130	EAST	LEA

<sup>8</sup> Proposed Bottom Hole Location If Different From Surface

UI or lot no.	Section	Township	Range	Lot.Idn	Feet From The	North/South Line	Feet From The	East/West Line	County
<sup>9</sup> Proposed Pool 1 MONUMENT TUBB					<sup>10</sup> Proposed Pool 2				

<sup>11</sup> Work Type Code P	<sup>12</sup> WellType Code O	<sup>13</sup> Rotary or C.T. R	<sup>14</sup> Lease Type Code P	<sup>15</sup> Ground Level Elevation 3542'
<sup>16</sup> Multiple No	<sup>17</sup> Proposed Depth 6700'	<sup>18</sup> Formation TUBB	<sup>19</sup> Contractor	<sup>20</sup> Spud Date

<sup>21</sup> Proposed Casing and Cement Program

SIZE OF HOLE	SIZE OF CASING	WEIGHT PER FOOT	SETTING DEPTH	SACKS OF CEMENT	EST. TOP
11	8 5/8	24	1260	920	Cmt. Circ.
7 7/8	5 1/2	15.5	6700	549	TOC @ 2934
					by TS

Describe the proposed program. If this application is to DEEPEN or PLUG BACK give the data on the present productive zone and proposed new productive zone. Describe the blowout prevention program, if any. Use additional sheets if necessary.

CHEVRON U.S.A. INC. INTENDS TO RECOMPLETE THE SUBJECT WELL FROM THE MONUMENT PADDOCK POOL TO THE MONUMENT TUBB RESERVOIR.

A PNT WILL NOT BE USED FOR THIS RECOMPLETION. A STEEL FRAC TANK WILL BE UTILIZED.

THE INTENDED PROCEDURE, CURRENT AND PROPOSED WELLBORE DIAGRAMS, AND TBG LANDING DETAILS ARE ATTACHED FOR YOUR APPROVAL.

Permit Expires 1 Year From Approval  
Date Unless Drilling Underway  
Plugback

<sup>23</sup> I hereby certify that the rules and regulations of the Oil Conservation Division have been complied with and that the information given above is true and complete to the best of my knowledge and belief.		OIL CONSERVATION DIVISION	
Signature <i>Denise Pinkerton</i>		Approved By: <i>[Signature]</i>	
Printed Name Denise Pinkerton		Title: PETROLEUM ENGINEER	
Title Regulatory Specialist		Approval Date: AUG 09 2006	
Date 7/26/2006		Expiration Date:	
Telephone 432-687-7375		Conditions of Approval: Attached <input type="checkbox"/>	

## DISTRICT I

P.O. Box 1980, Hobbs, NM 88241-1980

## DISTRICT II

P.O. Box Drawer DD, Artesia, NM 88211-0719

## DISTRICT III

1000 Rio Brazos Rd., Aztec, NM 87410

## DISTRICT IV

P.O. Box 2088, Santa Fe, NM 87504-2088

## State of New Mexico

## Energy, Minerals and Natural Resources Department

## OIL CONSERVATION DIVISION

P.O. Box 2088

Santa Fe, New Mexico 87504-2088

Form C-102

Revised February 10, 1999

Instructions on back

Submit to Appropriate District Office

State Lease - 4 Copy

Fee Lease - 3 Copy

☐ AMENDED REPORT

## WELL LOCATION AND ACREAGE DEDICATION PLAT

<sup>1</sup> API Number 30-025-21773	<sup>2</sup> Pool Code 47090	<sup>3</sup> Pool Name MONUMENT <i>TUBB</i>
<sup>4</sup> Property Code <i>29958 11427</i>	<sup>5</sup> Property Name L. VAN ETTEN	<sup>6</sup> Well No. 12
<sup>7</sup> OGRID Number 4323	<sup>8</sup> Operator Name CHEVRON USA INC	<sup>9</sup> Elevation 3542'GL

<sup>10</sup> Surface Location

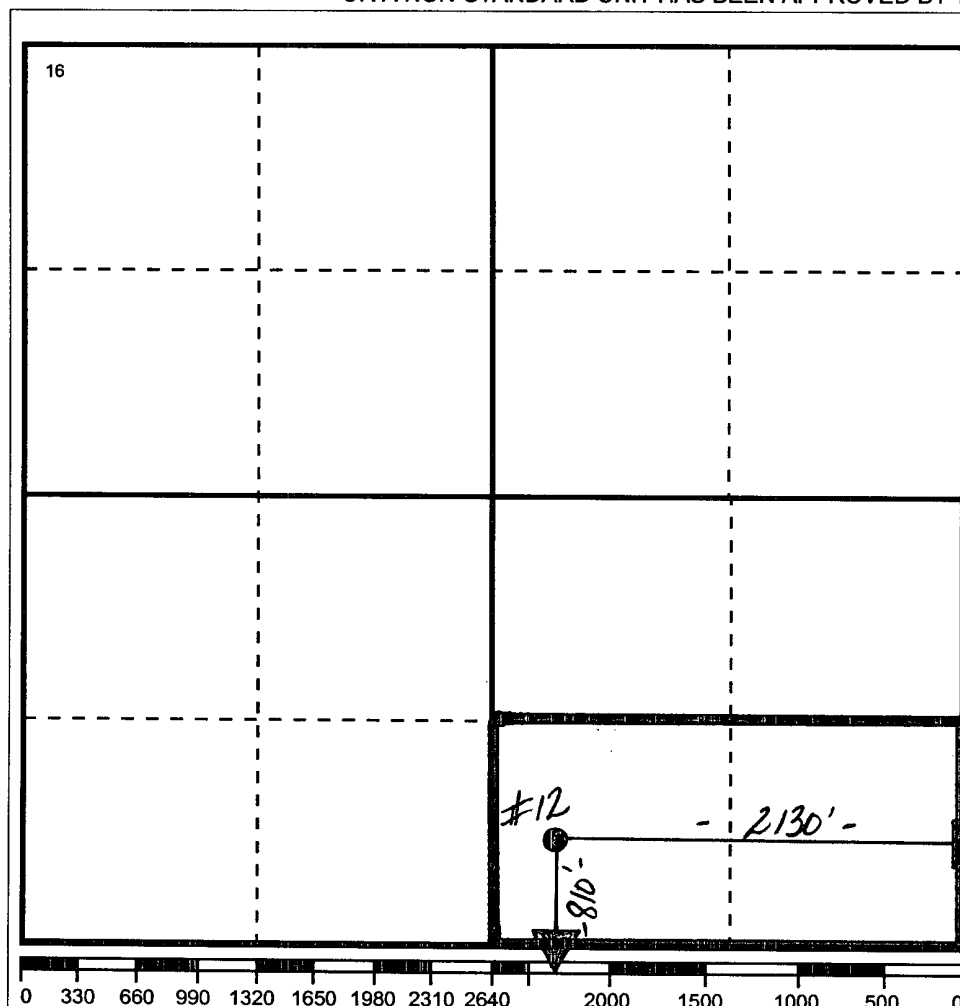
Ul or lot no	Section	Township	Range	Lot.Idn	Feet From The	North/South Line	Feet From The	East/West Line	County
O	9	20S	37E		810	SOUTH	2130	EAST	LEA

<sup>11</sup> Bottom Hole Location If Different From Surface

Ul or lot no.	Section	Township	Range	Lot.Idn	Feet From The	North/South Line	Feet From The	East/West Line	County

<sup>12</sup> Dedicated Acre 80	<sup>13</sup> Joint or Infill No	<sup>14</sup> Consolidation Code	<sup>15</sup> Order No.
------------------------------------	-------------------------------------	----------------------------------	-------------------------

NO ALLOWABLE WILL BE ASSIGNED TO THIS COMPLETION UNTIL ALL INTERESTS HAVE BEEN CONSOLIDATED  
OR A NON-STANDARD UNIT HAS BEEN APPROVED BY THE DIVISION

<sup>17</sup> OPERATOR CERTIFICATION

I hereby certify that the information contained herein is true and complete to the best of my knowledge and belief

Signature

*Denise Pinkerton*

Printed Name

Denise Pinkerton

Position

Regulatory Specialist

Date

7/26/2006

<sup>18</sup> SURVEYOR CERTIFICATION

I hereby certify that the well location shown on this plat was plotted from field notes of actual surveys made by me or under my supervision, and that the same is true and correct to the best of my knowledge and belief.

Date Surveyed

Signature &amp; Seal of

Professional Surveyor

Certificate No.

**L Van Etten #12  
Monument Tubb Field  
Section 9, T20S, R37E, Unit O  
Lea County, NM  
30-025-21773**

**7-12-2006**

**Tubb Completion Procedure (Do not exceed 500 psi on casing at any point during job due to squeeze perfs @ 1200'):**

1. Displace flowline w/ fresh water. Have Field Specialist close valve at header. Pressure test line according to type. All polypipe (SDR7 and SDR11) will be tested to 100 psi. All steel lines will be tested to 500 psi. If a leak is found, contact Donnie Ives for repair/replacement. If tests good, bleed off pressure and open valve at header. Document this process in the morning report.
2. MIRU Key PU & RU. Bleed pressure from well & kill down casing with 8.6# BW. NDWH. POOH w/ rods & pump (see Tbg Detail). NUBOP. Test BOP to 1,000 psi when possible. Release TAC and POOH w/ 2-7/8" Tbg. Send in rods and tbg for inspection.
3. PU & RIH w/ 4-3/4" bit on 2-7/8" WS to 5575. Drill out CIBP and push to 6300'. POOH & LD bit
4. PU & RIH w/ 4-1/2" pkr w/ bypass on 2-7/8" WS to 5180'. Set pkr and test csg to 500 psi. Release pkr and RIH to 5450'. Set pkr. Establish injection rate in Blinbry perfs. Spot 75 sxs of class C cement (or SLB recommendation) below the pkr. Open Bypass and reverse circulate clean. Close bypass. Squeeze Blinbry perfs to 2000 psi.
5. Release Pkr & PUH to 5050'. Set pkr and load and test BS to 500 psi. Establish injection rate into Paddock perfs. Spot 75 sxs of class C cement (or SLB recommendation) below the pkr. Open Bypass and reverse circulate clean. Close bypass. Squeeze Paddock perfs to 2000 psi. Release pkr and POOH.
6. PU & RIH w/ 4-3/4" bit w/ drill collars on WS. Drill out cement across Paddock perfs. Test squeeze to 500 psi. Drill out cement across Blinbry perfs. Test squeeze to 500 psi. RIH & drill out CIBP & cement @ 6300'. POOH & LD bit.
7. PU & RIH w/ 4-3/4" shoe. Drill out Model D Pkr @ 6335' and push to 6662'. POOH.
8. PU & RIH w/ 5-1/2" treating pkr w/ on/off tool and 1.87" profile to 6250' testing to 4,500 psi while RIH. Set pkr and load and test BS to 500 psi.
9. MIRU DS acid truck. Pump 5,000 gals 15% NEFE anti-sludge HCl acid at a max rate of 6 BPM and max treating pressure of 4,500 psi dropping 45 1.3 SG 7/8" ball

sealers evenly spaced throughout job. Displace with 8.6# BW – do not overdisplace. Record ISIP, 5, 10, & 15 minute SIP's.

Note: Pickle tubing before acid job if rep determines necessary.

10. Release pkr and RIH to 6560' to knock balls off perfs. PU to 6300' and set pkr. Test backside to 500 psi. RU swab and swab well reporting recovered fluid volumes, pressures, and fluid levels.
11. MIRU slickline. RIH and set plug in profile. Get off on/off tool and POOH w/ WS.
12. RIH w/ top half of on/off tool on 2-3/8" tbg. Get on on/off. RIH w/ slickline and pull profile plug. RU swab and swab well in. NDBOP NUWH.
13. Turn well over to production.

Engineer – Keith Lopez  
432-687-7120 Office  
432-631-3281 Cell  
432-661-6156 Home

Well: **L Van Etten #12**

Field: Monument Paddock Reservoir: Paddock

Location: 810 FSL & 2130 FEL

Unit: O  
Section: 9  
Township: 20S  
Range: 37E  
County: LEA, NM.

**Elevations:**

GL: 3542'  
DF:  
KB:

Squeeze Perfs @ 1200'  
250 sxs circ

**Paddock:**

Perfs: Status  
5206'-5214' Open

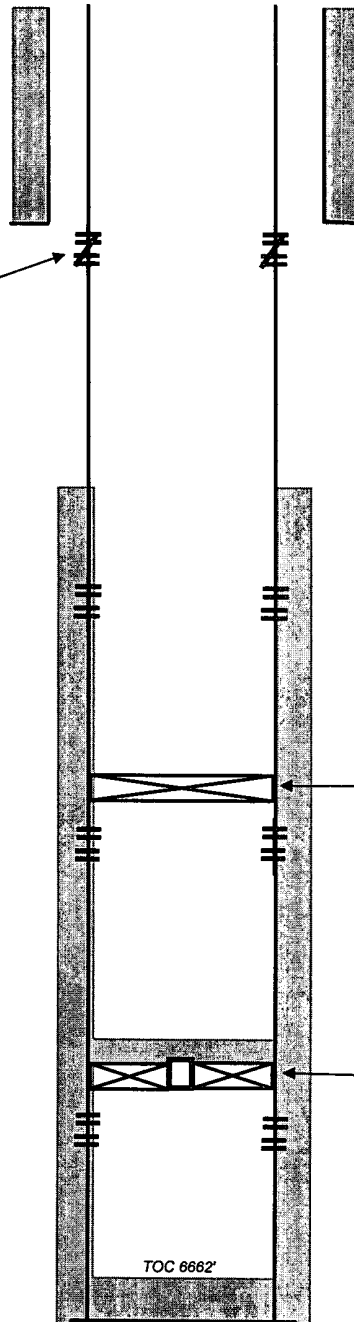
**Bllebry:**

Perfs: Status  
5612'-5731' Closed

**Tubb:**

Perfs Status  
6371'-6555' Closed

**Current  
Wellbore Diagram**



**Well ID Info:**

Refno: FF4980  
API No: 10-025-21773  
L5/L6: U938300  
Spud Date:  
ComplDate 6/7/1966

**Surf. Csg:**

Size 8.625"  
Weight 24#  
Set @ 1260'  
With: 920 sx  
Hole Size: 11"  
Circ: Yes  
TOC @ Surf

**Prod. Csg:**

Size 5-1/2"  
Weight 15.5#  
Set @ 6700"  
With: 549 sx  
Hole Size: 7.875"  
Circ: No  
TOC @ 2934' TS

Updated: 12-Jul-06

By: LOPK

PBTD: 5575'  
TD: 6700"

Well: **L Van Etten #12**

Field: Monument Tubb

Reservoir: Tubb

Location: 810 FSL & 2130 FEL

Unit: O  
Section: 9  
Township: 20S  
Range: 37E  
County: LEA, NM.

**Proposed**  
**Wellbore Diagram**

**Well ID Info:**

Refno: FF4980  
API No: 10-025-21773  
L5/L6: U938300  
Spud Date:  
ComplDate 6/7/1966

**Elevations:**

GL: 3542'  
DF:  
KB:

**Squeeze Perfs @ 1200'**  
250 sxs circ

**Surf. Csg:**

Size 8.625"  
Weight 24#  
Set @ 1260'  
With: 920 sx  
Hole Size: 11"  
Circ: Yes  
TOC @ Surf

**Paddock:**

Perfs: Status  
5206'-5214' Squeezed

**Blinbry:**

Perfs: Status  
5612'-5731' Squeezed

**Tubb:**

Perfs Status  
6371'-6555' Open

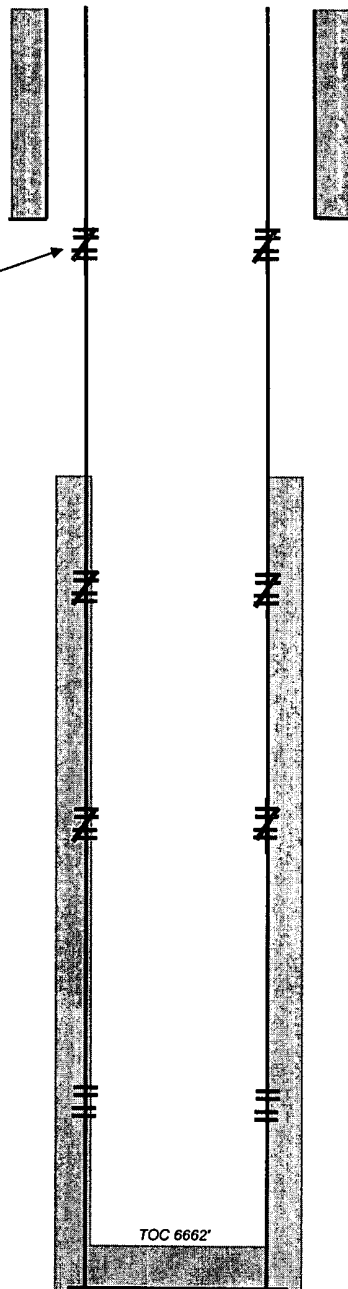
**Prod. Csg:**

Size 5-1/2"  
Weight 15.5#  
Set @ 6700'  
With: 549 sx  
Hole Size: 7.875"  
Circ: No  
TOC @ 2934' TS

Updated: 12-Jul-06

By: LOPK

PBTD: 5575'  
TD: 6700'



### Tubing Landing Details

[illegible]