

DISTRICT I
1626 N. FRENCH DR., BOHRS, NM 86240

DISTRICT II
1301 W. GRAND AVENUE, ARTESIA, NM 88210

DISTRICT III
1000 Rio Brazos Rd., Aztec, NM 87410

DISTRICT IV
1220 S. ST. FRANCIS DR., SANTA FE, NM 87505

State of New Mexico
Energy, Minerals and Natural Resources Department

OIL CONSERVATION DIVISION
1220 SOUTH ST. FRANCIS DR.
Santa Fe, New Mexico 87505

Form C-102
Revised October 12, 2005
Submit to Appropriate District Office
State Lease - 4 Copies
Fee Lease - 3 Copies

WELL LOCATION AND ACREAGE DEDICATION PLAT

☐ AMENDED REPORT

API Number 30-025-38062	Pool Code 22900	Pool Name Eunice Blinberry-Tubb-Drinkard North
Property Code 22503	Property Name NEDU	Well Number 245
OGRID No. 873	Operator Name APACHE CORPORATION	Elevation 3494'

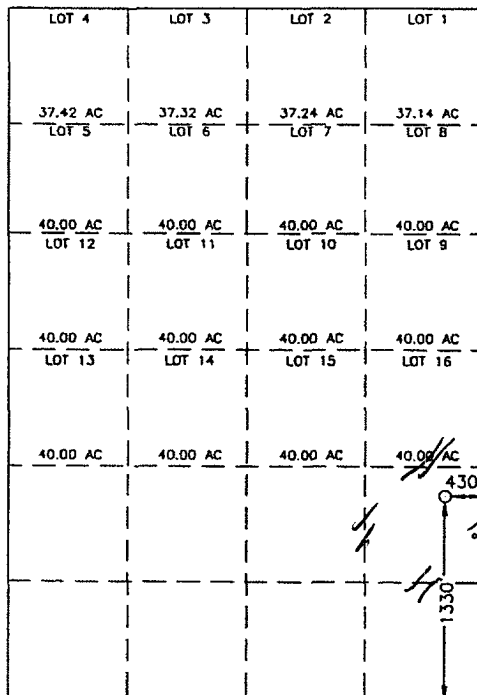
Surface Location

UL or lot No.	Section	Township	Range	Lot Idn	Feet from the	North/South line	Feet from the	East/West line	County
1	2	21-S	37-E		2310	SOUTH	430	EAST	LEA

Bottom Hole Location If Different From Surface

UL or lot No.	Section	Township	Range	Lot Idn	Feet from the	North/South line	Feet from the	East/West line	County
Dedicated Acres 40		Joint or Infill	Consolidation Code	Order No.					

NO ALLOWABLE WILL BE ASSIGNED TO THIS COMPLETION UNTIL ALL INTERESTS HAVE BEEN CONSOLIDATED
OR A NON-STANDARD UNIT HAS BEEN APPROVED BY THE DIVISION

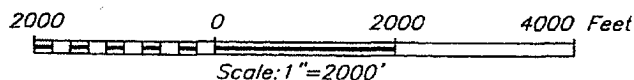


GEODETIC COORDINATES
NAD 27 NME

Y=550252.4 N
X=872155.1 E

LAT.=32.506961° N
LONG.=103.126161° W

LAT.=32°30'25.06" N
LONG.=103°07'34.18"



OPERATOR CERTIFICATION

I hereby certify that the information herein is true and complete to the best of my knowledge and belief, and that this organization either owns a working interest or unleased mineral interest in the land including the proposed bottom hole location or has a right to drill this well at this location pursuant to a contract with an owner of such mineral or working interest, or to a voluntary pooling agreement or a compulsory pooling order heretofore entered by the division.

Lana Williams 5/15/06
Signature Date
Lana Williams
Printed Name

SURVEYOR CERTIFICATION

I hereby certify that the well location shown on this plat was plotted from field notes of actual surveys made by me or under my supervision, and that the same is true and correct to the best of my belief.

JUNE 12, 2006

Date Surveyed MR
Signature & Seal of Professional Surveyor
Ronald E. Edson 6/22/06
06.11.0955
Certificate No. GARY EDSON 12041
RONALD E. EDSON 3239

DISTRICT I
1625 N. FRENCH DR., HOBBS, NM 88240

DISTRICT II
1301 W. GRAND AVENUE, ARTESIA, NM 88210

DISTRICT III
1000 Rio Brazos Rd., Aztec, NM 87410

DISTRICT IV
1220 S. ST. FRANCIS DR., SANTA FE, NM 87505

State of New Mexico
Energy, Minerals and Natural Resources Department

OIL CONSERVATION DIVISION
1220 SOUTH ST. FRANCIS DR.
Santa Fe, New Mexico 87505

Form C-102
Revised October 12, 2005
Submit to Appropriate District Office
State Lease - 4 Copies
Fee Lease - 3 Copies

WELL LOCATION AND ACREAGE DEDICATION PLAT

☐ AMENDED REPORT

API Number	Pool Code	Pool Name
Property Code	Property Name NEDU	Well Number 245
OGRID No.	Operator Name APACHE CORPORATION	Elevation 3494'

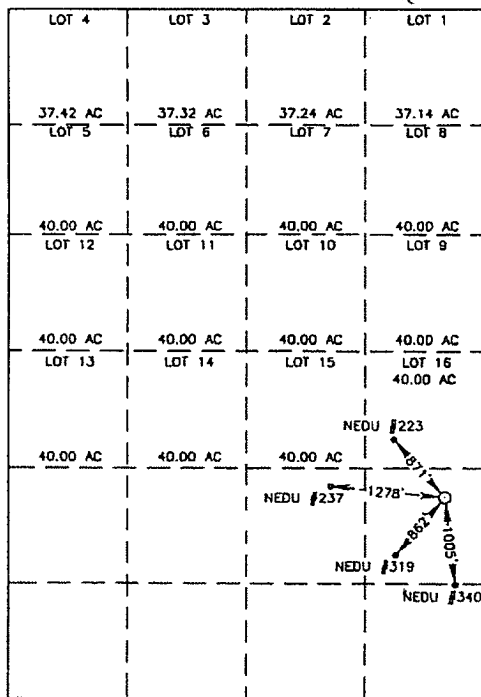
Surface Location

UL or lot No.	Section	Township	Range	Lot Idn	Feet from the	North/South line	Feet from the	East/West line	County
1	2	21-S	37-E		2310	SOUTH	430	EAST	LEA

Bottom Hole Location If Different From Surface

UL or lot No.	Section	Township	Range	Lot Idn	Feet from the	North/South line	Feet from the	East/West line	County
Dedicated Acres	Joint or Infill	Consolidation Code	Order No.						

NO ALLOWABLE WILL BE ASSIGNED TO THIS COMPLETION UNTIL ALL INTERESTS HAVE BEEN CONSOLIDATED
OR A NON-STANDARD UNIT HAS BEEN APPROVED BY THE DIVISION



GEODETIC COORDINATES
NAD 27 NME

Y=550252.4 N
X=872155.1 E

LAT.=32.506961° N
LONG.=103.126161° W

LAT.=32°30'25.06" N
LONG.=103°07'34.18"

OPERATOR CERTIFICATION

I hereby certify that the information herein is true and complete to the best of my knowledge and belief, and that this organization either owns a working interest or unleased mineral interest in the land including the proposed bottom hole location or has a right to drill this well at this location pursuant to a contract with an owner of such mineral or working interest, or to a voluntary pooling agreement or a compulsory pooling order heretofore entered by the division.

Signature: Lana Williams Date: 8/15/06
Printed Name: Lana Williams

SURVEYOR CERTIFICATION

I hereby certify that the well location shown on this plat was plotted from field notes of actual surveys made by me or under my supervision, and that the same is true and correct to the best of my belief.

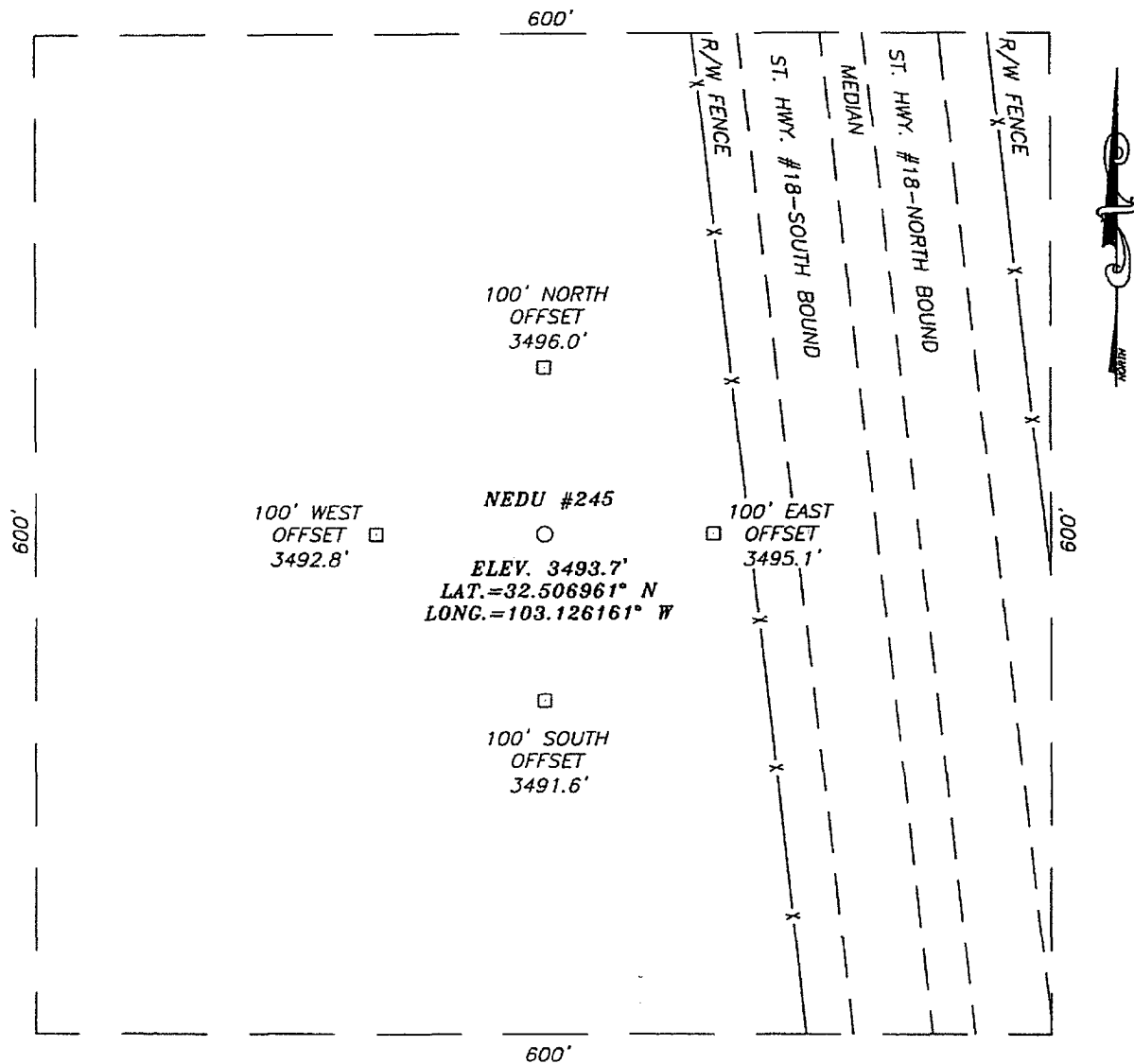
JUNE 12, 2006

Date Surveyed: _____ MR
Signature & Seal of Professional Surveyor

06.11.0955

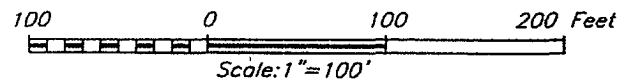
Certificate No. GARY EIDSON 12641
RONALD J. EIDSON 3239

SECTION 2, TOWNSHIP 21 SOUTH, RANGE 37 EAST, N.M.P.M.,
 LEA COUNTY, NEW MEXICO



DIRECTIONS TO LOCATION

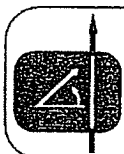
FROM THE INTERSECTION OF ST. HWY. #18 AND ST. HWY. #207, GO SOUTH ON ST. HWY. #18 APPRX. 1.0 MILES. TURN RIGHT (THROUGH CATTLE GUARD) AND GO WEST-NORTHWEST APPROX 100 FEET. THIS LOCATION IS APPROX 350 FEET NORTH.



APACHE CORPORATION

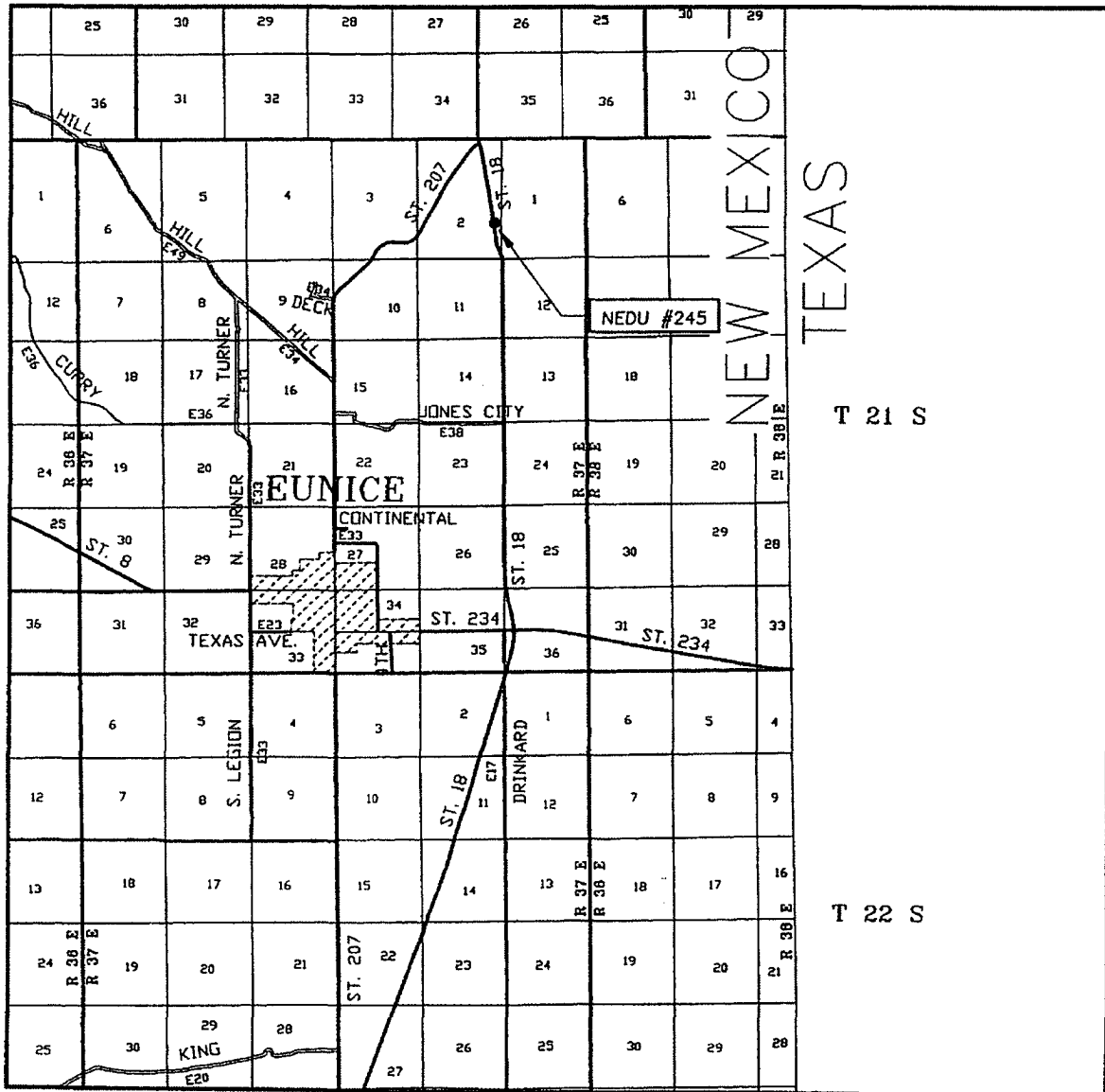
NEDU #245
 LOCATED 2310 FEET FROM THE SOUTH LINE
 AND 430 FEET FROM THE EAST LINE OF SECTION 2,
 TOWNSHIP 21 SOUTH, RANGE 37 EAST, N.M.P.M.,
 LEA COUNTY, NEW MEXICO.

Survey Date: 06/12/06	Sheet 1 of 1 Sheets
W.O. Number: 06.11.0955	Dr By: M.R. Rev 1: N/A
Date: 06/21/06	Disk: CD#6 06110955 Scale: 1"=100'



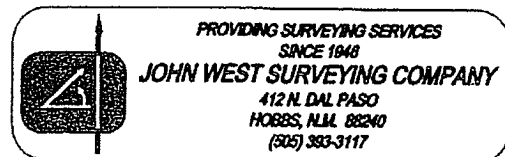
PROVIDING SURVEYING SERVICES
 SINCE 1948
JOHN WEST SURVEYING COMPANY
 412 N. DAL PASO
 HOBBBS, N.M. 88240
 (505) 393-3117

VICINITY MAP

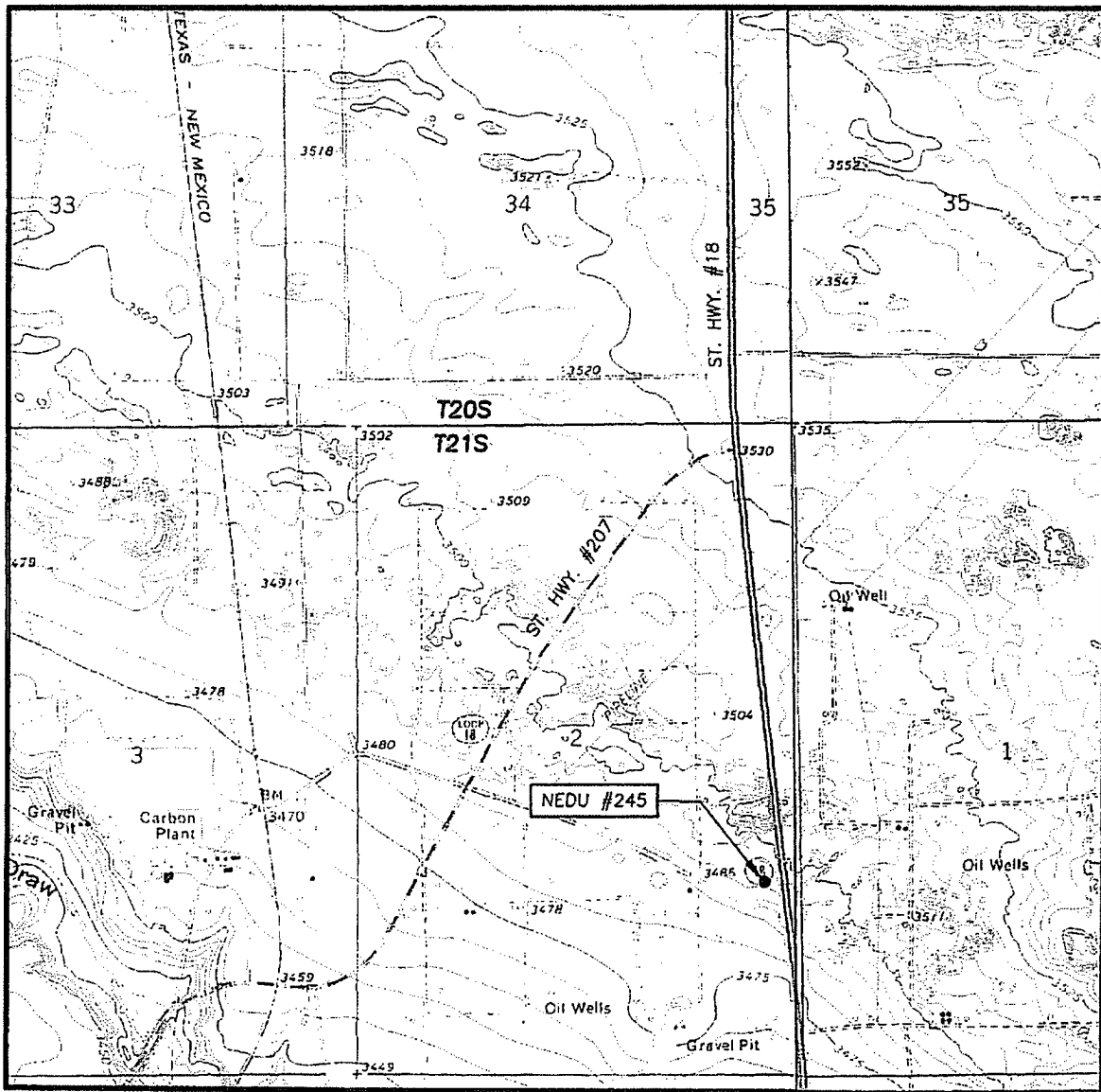


SCALE: 1" = 2 MILES

SEC. 2 TWP. 21-S RGE. 37-E
 SURVEY N.M.P.M.
 COUNTY LEA STATE NEW MEXICO
 DESCRIPTION 2310' FSL & 430' FEL
 ELEVATION 3494'
 OPERATOR APACHE CORPORATION
 LEASE NEDU



LOCATION VERIFICATION MAP



SCALE: 1" = 2000'

CONTOUR INTERVAL:
HOBBS SW, N.M. - 5'
HOBBS SE, N.M. - 5'

SEC. 2 TWP. 21-S RGE. 37-E

SURVEY N.M.P.M.

COUNTY LEA STATE NEW MEXICO

DESCRIPTION 2310' FSL & 430' FEL

ELEVATION 3494'

OPERATOR APACHE CORPORATION

LEASE NEDU

U.S.G.S. TOPOGRAPHIC MAP
HOBBS SW, N.M.

