

DISTRICT I

1625 N. FRENCH DR., HOBBS, NM 88240

DISTRICT II

1301 W. GRAND AVENUE, ARTESIA, NM 88210

DISTRICT III

1000 Rio Brazos Rd., Aztec, NM 87410

DISTRICT IV

1220 S. ST. FRANCIS DR., SANTA FE, NM 87505

State of New Mexico

Energy, Minerals and Natural Resources Department

OIL CONSERVATION DIVISION
1220 SOUTH ST. FRANCIS DR.
Santa Fe, New Mexico 87505

Form C-102

Revised October 12, 2005

Submit to Appropriate District Office

State Lease - 4 Copies

Fee Lease - 3 Copies

WELL LOCATION AND ACREAGE DEDICATION PLAT

☐ AMENDED REPORT

API Number 30-025-38076	Pool Code	Pool Name
Property Code 34153	Property Name HESTER 12	Well Number 8
GRID No. 873	Operator Name APACHE CORPORATION	Elevation 3549'

Surface Location

UL or lot No.	Section	Township	Range	Lot Idn	Feet from the	North/South line	Feet from the	East/West line	County
K	12	20-S	38-E		1650	SOUTH	1890	WEST	LEA

Bottom Hole Location If Different From Surface

UL or lot No.	Section	Township	Range	Lot Idn	Feet from the	North/South line	Feet from the	East/West line	County
Dedicated Acres 40	Joint or Infill	Consolidation Code	Order No.						

NO ALLOWABLE WILL BE ASSIGNED TO THIS COMPLETION UNTIL ALL INTERESTS HAVE BEEN CONSOLIDATED
OR A NON-STANDARD UNIT HAS BEEN APPROVED BY THE DIVISION

	OPERATOR CERTIFICATION I hereby certify that the information herein is true and complete to the best of my knowledge and belief, and that this organization either owns a working interest or unleased mineral interest in the land including the proposed bottom hole location or has a right to drill this well at this location pursuant to a contract with an owner of such mineral or working interest, or to a voluntary pooling agreement or a compulsory pooling order heretofore entered by the division. Signature <u>Lana Williams</u> Date <u>8/17/06</u> Printed Name <u>Lana Williams</u>
	SURVEYOR CERTIFICATION I hereby certify that the well location shown on this plat was plotted from field notes of actual surveys made by me or under my supervision, and that the same is true and correct to the best of my belief. MAY 31, 2006 Date Surveyed MR Signature & Seal of Professional Surveyor <u>Gary Eidson</u> 6/14/06 06.11.0898
	Certificate No. GARY EIDSON 12841 RONALD J. EIDSON 3239

DISTRICT I
1825 N. FRENCH DR., HOBBS, NM 88240

DISTRICT II
1501 W. GRAND AVENUE, ARTESIA, NM 88210

DISTRICT III
1000 Rio Brazos Rd., Aztec, NM 87410

DISTRICT IV
1220 S. ST. FRANCIS DR., SANTA FE, NM 87505

State of New Mexico
Energy, Minerals and Natural Resources Department

OIL CONSERVATION DIVISION
1220 SOUTH ST. FRANCIS DR.
Santa Fe, New Mexico 87505

Form C-102
Revised October 12, 2005
Submit to Appropriate District Office
State Lease - 4 Copies
Fee Lease - 3 Copies

WELL LOCATION AND ACREAGE DEDICATION PLAT

☐ AMENDED REPORT

API Number	Pool Code	Pool Name
Property Code	Property Name HESTER 12	Well Number 8
OGRID No.	Operator Name APACHE CORPORATION	Elevation 3549'

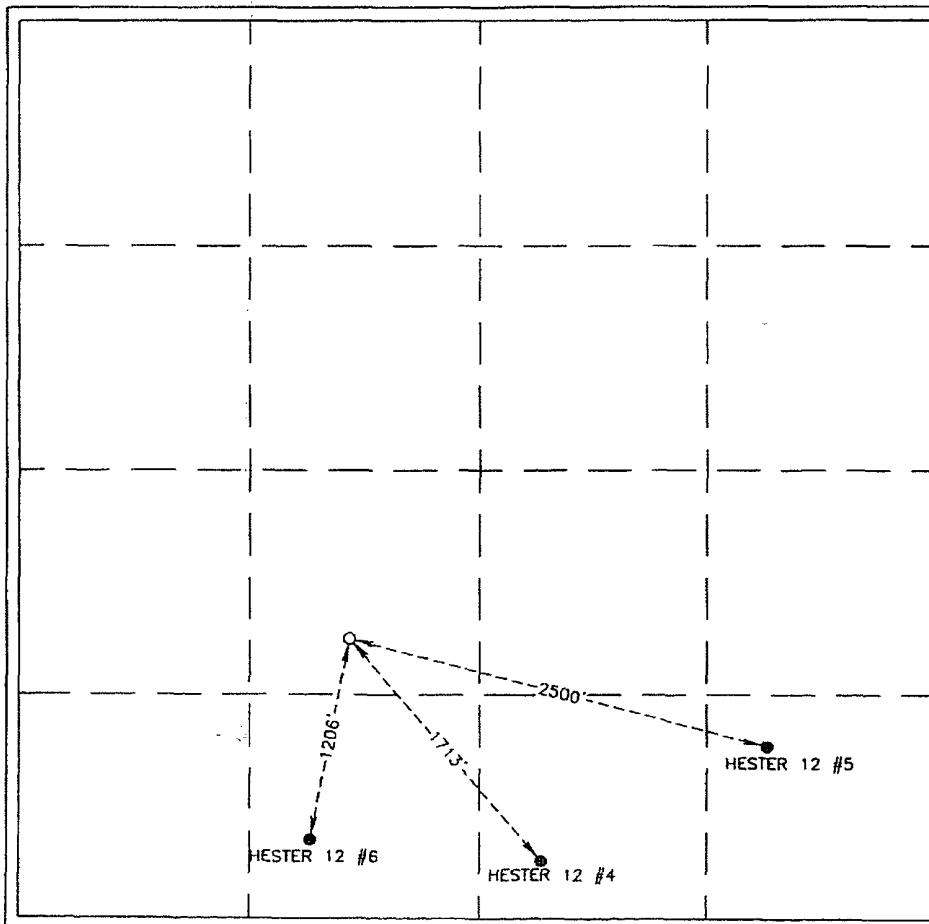
Surface Location

UL or lot No.	Section	Township	Range	Lot Idn	Feet from the	North/South line	Feet from the	East/West line	County
K	12	20-S	38-E		1650	SOUTH	1890	WEST	LEA

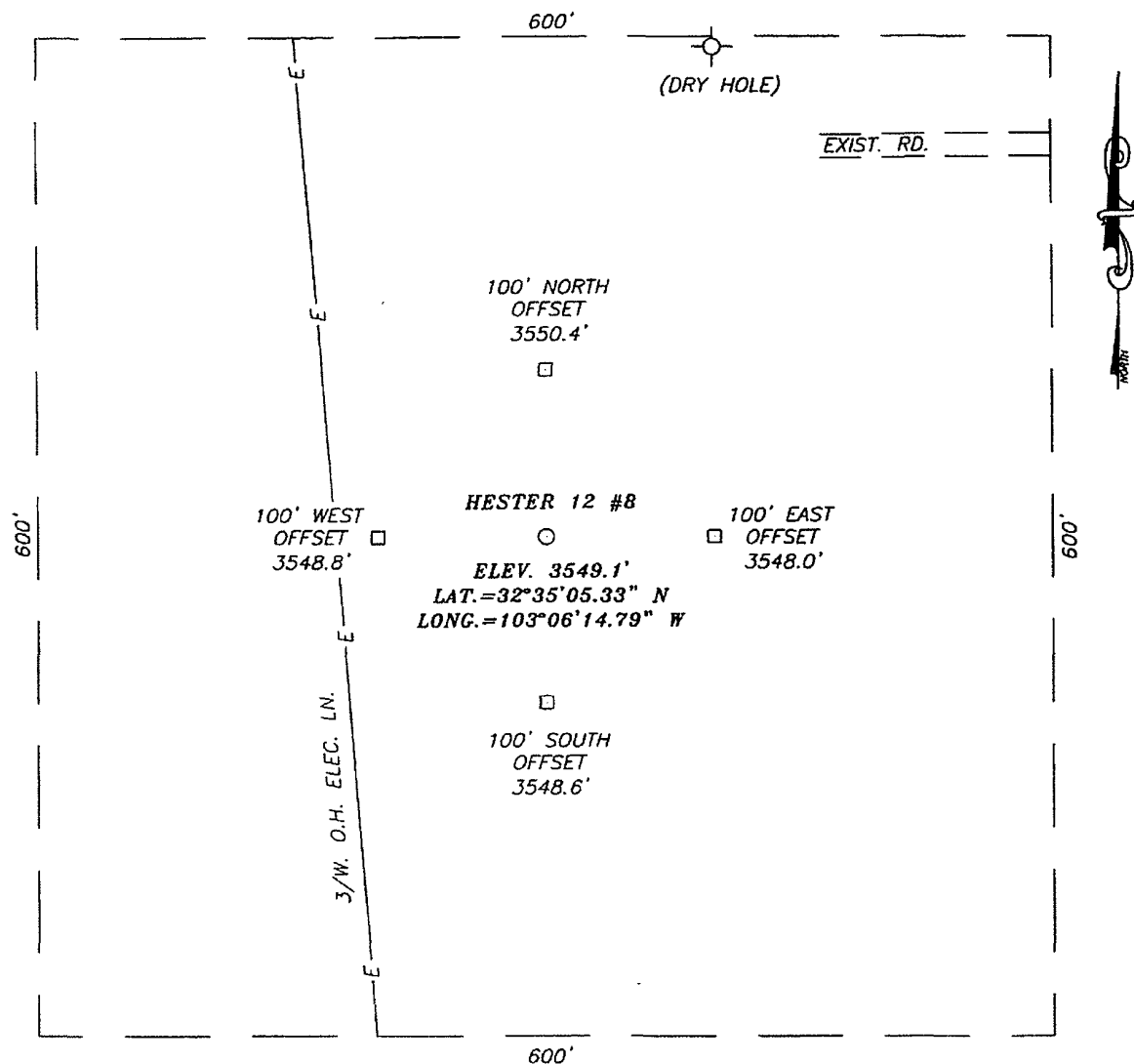
Bottom Hole Location If Different From Surface

UL or lot No.	Section	Township	Range	Lot Idn	Feet from the	North/South line	Feet from the	East/West line	County
Dedicated Acres	Joint or Infill	Consolidation Code	Order No.						

NO ALLOWABLE WILL BE ASSIGNED TO THIS COMPLETION UNTIL ALL INTERESTS HAVE BEEN CONSOLIDATED
OR A NON-STANDARD UNIT HAS BEEN APPROVED BY THE DIVISION

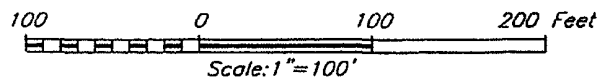
	OPERATOR CERTIFICATION <i>I hereby certify that the information herein is true and complete to the best of my knowledge and belief, and that this organization either owns a working interest or unleased mineral interest in the land including the proposed bottom hole location or has a right to drill this well at this location pursuant to a contract with an owner of such mineral or working interest, or to a voluntary pooling agreement or a compulsory pooling order heretofore entered by the division.</i> Signature: <u>Lana Williams</u> Date: <u>8/17/06</u> Printed Name: <u>Lana Williams</u>
	SURVEYOR CERTIFICATION <i>I hereby certify that the well location shown on this plat was plotted from field notes of actual surveys made by me or under my supervision, and that the same is true and correct to the best of my belief.</i> MAY 31, 2006 Date Surveyed: _____ MR Signature & Seal of Professional Surveyor: _____
	06.11.0898
	Certificate No. GARY EIDSON 12841 RONALD J. EIDSON 3239

SECTION 12, TOWNSHIP 20 SOUTH, RANGE 38 EAST, N.M.P.M.,
LEA COUNTY, NEW MEXICO



DIRECTIONS TO LOCATION

FROM THE INTERSECTION OF ST. HWY. #18 AND
CO. RD. H-45 (STARLIGHT RD.), GO EAST ON CO.
RD. H-45 APPROX. 1.4 MILES. TURN RIGHT AND
GO SOUTH APPROX. 0.7 MILES. THIS LOCATION IS
APPROX. 383 FEET WEST.



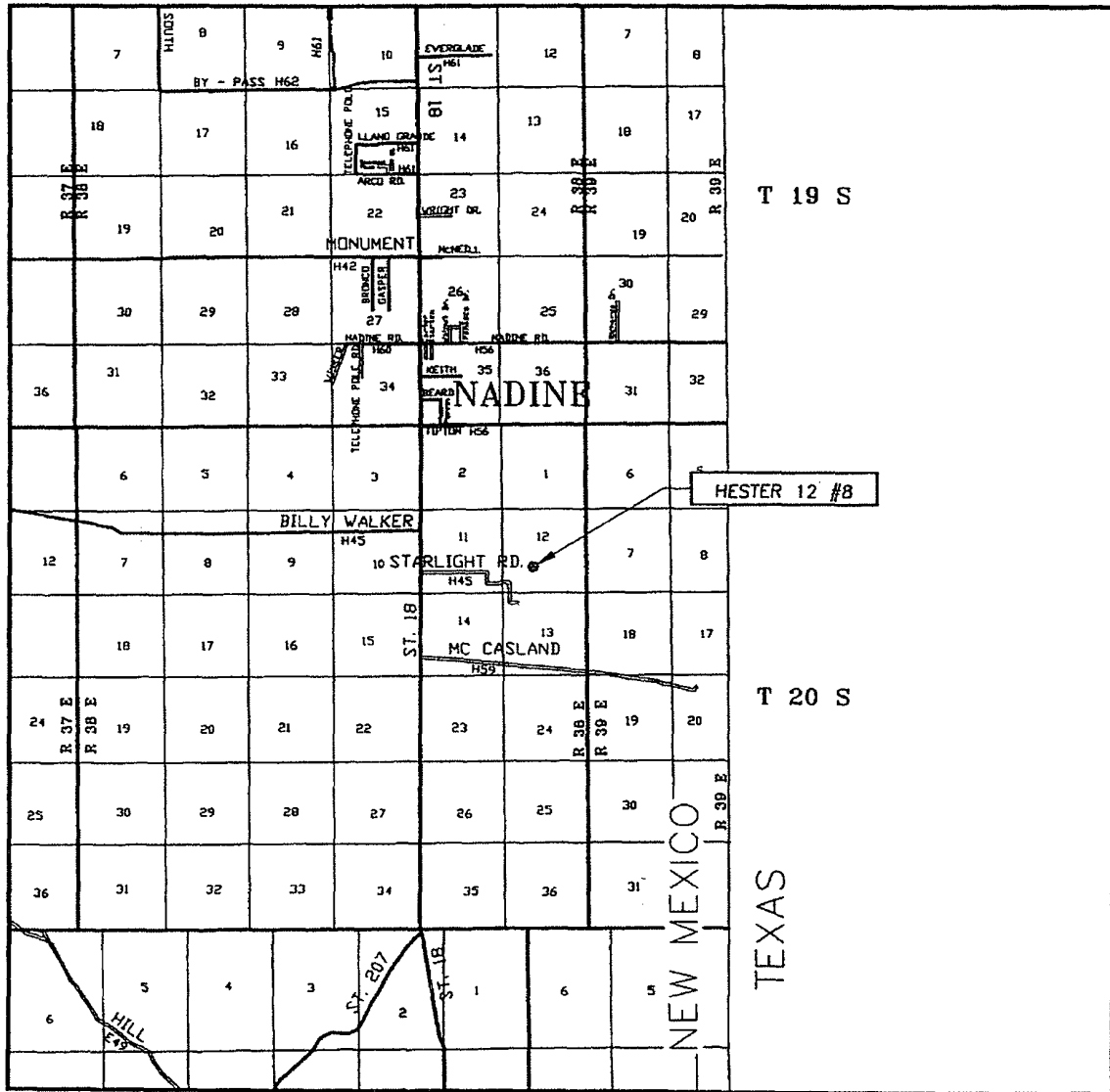
PROVIDING SURVEYING SERVICES
SINCE 1946
JOHN WEST SURVEYING COMPANY
412 N. DAL PASO
HOBBS, N.M. 88240
(505) 393-3117

APACHE CORPORATION

HESTER 12 #8
LOCATED 1650 FEET FROM THE SOUTH LINE
AND 1890 FEET FROM THE WEST LINE OF SECTION 12,
TOWNSHIP 20 SOUTH, RANGE 38 EAST, N.M.P.M.,
LEA COUNTY, NEW MEXICO.

Survey Date: 05/31/06	Sheet 1 of 1 Sheets
W.O. Number: 06.11.0898	Dr By: M.R.
Date: 06/09/06	Disk: CD#6
06110898	Scale: 1"=100'

VICINITY MAP

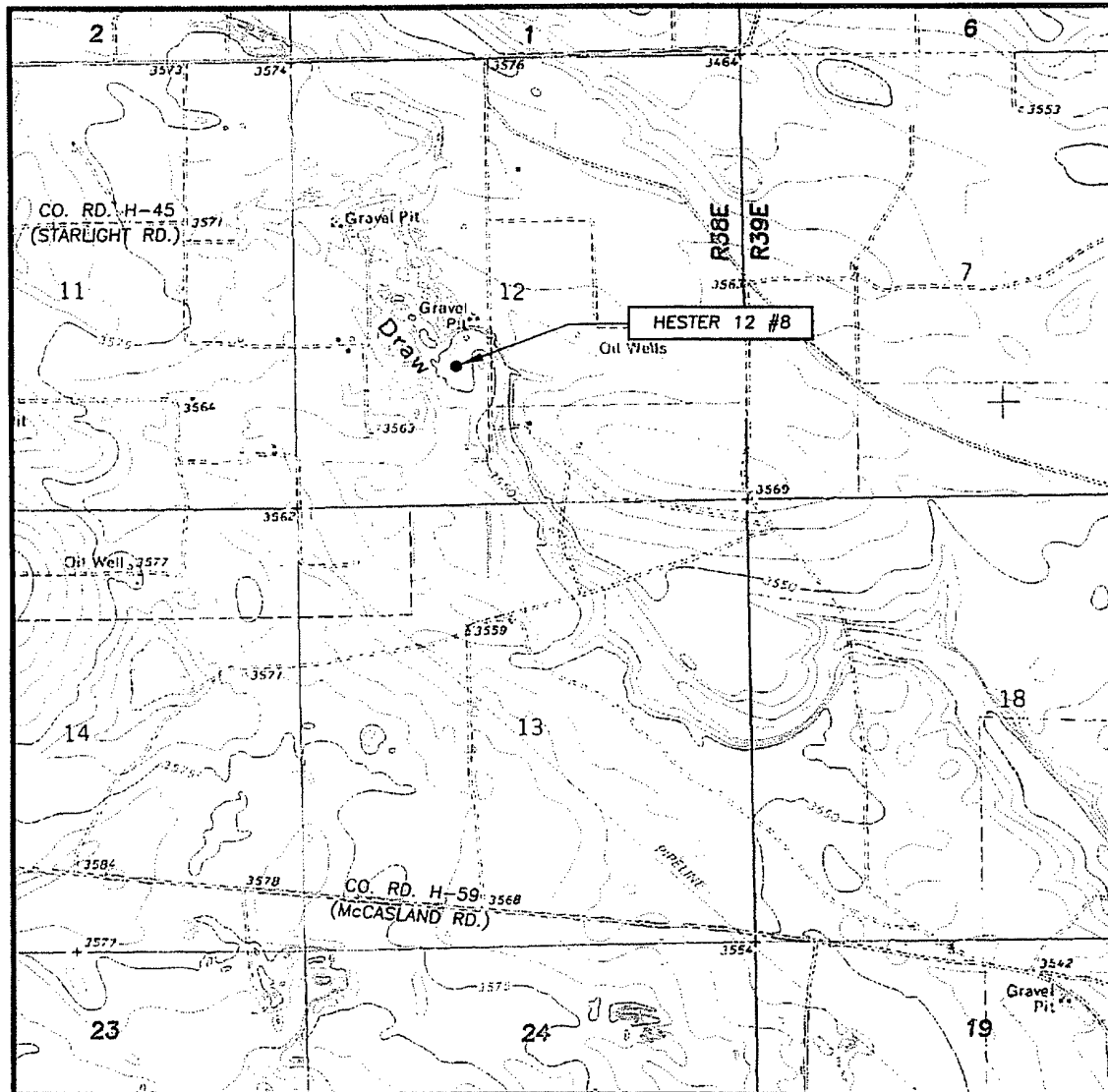


SCALE: 1" = 2 MILES

SEC. 12 TWP. 20-S RGE. 38-E
 SURVEY N.M.P.M.
 COUNTY LEA STATE NEW MEXICO
 DESCRIPTION 1650' FSL & 1890' FWL
 ELEVATION 3549'
 OPERATOR APACHE CORPORATION
 LEASE HESTER 12

PROVIDING SURVEYING SERVICES
 SINCE 1946
JOHN WEST SURVEYING COMPANY
 412 N. DAL PASO
 HOBBS, N.M. 88240
 (505) 393-3117

LOCATION VERIFICATION MAP



SCALE: 1" = 2000'

CONTOUR INTERVAL:
HOBBS SE, N.M. - 5'

SEC. 12 TWP. 20-S RGE. 38-E

SURVEY _____ N.M.P.M.

COUNTY LEA STATE NEW MEXICO

DESCRIPTION 1650' FSL & 1890' FWL

ELEVATION 3549'

OPERATOR APACHE CORPORATION

LEASE HESTER 12

U.S.G.S. TOPOGRAPHIC MAP
HOBBS SE, N.M.

