

District I
1625 N. French Dr., Hobbs, NM 88240
District II
1301 W. Grand Avenue, Artesia, NM 88210
District III
1000 Rio Brazos Road, Aztec, NM 87410
District IV
1220 S. St. Francis Dr., Santa Fe, NM 87505

State of New Mexico
Energy Minerals and Natural Resources

Form C-101
May 27, 2004

Oil Conservation Division
1220 South St. Francis Dr.
Santa Fe, NM 87505

Submit to appropriate District Office

☐ AMENDED REPORT

APPLICATION FOR PERMIT TO DRILL, RE-ENTER, DEEPEN, PLUGBACK, OR ADD A ZONE

Operator Name and Address UNIT PETROLEUM COMPANY 407 NORTH BIG SPRING SUITE 101 MIDLAND, TEXAS 79701		2 OGRID Number 115970
Property Code 33010		3 API Number 30 - 025-38107
Property Name BYERS		Well No. # 2
Proposed Pool 1 OSUDO MORROW-WEST (82240)		Proposed Pool 2

7 Surface Location									
UL or lot no. A	Section 23	Township 20S	Range 35E	Lot Idn	Feet from the 1280'	North/South line NORTH	Feet from the 1230'	East/West line EAST	County LEA

8 Proposed Bottom Hole Location If Different From Surface									
UL or lot no.	Section	Township	Range	Lot Idn	Feet from the	North/South line	Feet from the	East/West line	County

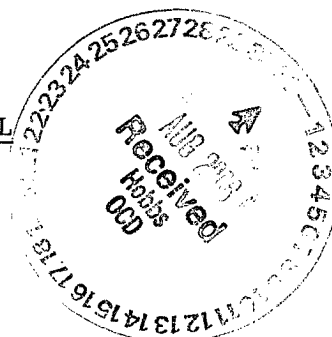
Additional Well Information				
11 Work Type Code N	12 Well Type Code G	13 Cable/Rotary ROTARY	14 Lease Type Code P	15 Ground Level Elevation 3676'
16 Multiple NO	17 Proposed Depth 13,600'	18 Formation MORROW	19 Contractor UNKNOWN	20 Spud Date WHEN APPROVED
Depth to Groundwater 65' +		Distance from nearest fresh water well 2.75 miles		Distance from nearest surface water None known
Pit Liner: Synthetic <input checked="" type="checkbox"/> 12 mils thick Clay <input type="checkbox"/>		Pit Volume 20M bbls		
Closed-Loop System <input type="checkbox"/>		Drilling Method: Fresh Water <input checked="" type="checkbox"/> Brine <input checked="" type="checkbox"/> Diesel Oil-based <input type="checkbox"/> Gas/Air <input type="checkbox"/>		

21 Proposed Casing and Cement Program					
Hole Size	Casing Size	Casing weight/foot	Setting Depth	Sacks of Cement	Estimated TOC
26"	20"	Conductor	40'	Redi-mix	Surface
17 1/2"	13 3/8"	48#	450'	440 Sx.	Surface
12 1/4"	9 5/8"	40#	4300'	1200 Sx.	Surface
8 3/4"	7"	26#	11,500'	850 Sx.	7000' From S.
6 1/8"	4 1/2" Liner	13.5#	11,200'-13,600'	275 Sx.	Top of Liner

22 Describe the proposed program. If this application is to DEEPEN or PLUG BACK, give the data on the present productive zone and proposed new productive zone. Describe the blowout prevention program, if any. Use additional sheets if necessary.

SEE ATTACHED SHEET FOR DETAIL

Permit Expires 1 Year From Approval
Date Unless Drilling Underway



I hereby certify that the information given above is true and complete to the best of my knowledge and belief. I further certify that the drilling pit will be constructed according to NMOCD guidelines <input checked="" type="checkbox"/> a general permit <input type="checkbox"/> or an (attached) alternative OCD-approved plan <input type="checkbox"/> .		OIL CONSERVATION DIVISION	
Printed name: Joe T. Janica		Approved by: Chris Williams	
Title: Agent		Title: OC DISTRICT SUPERVISOR/GENERAL MANAGER	
E-mail Address: joe.janica@valornet.com		Approval Date: SEP 01 2006 Expiration Date:	
Date: 08/31/06	Phone: 505-391-8503	Conditions of Approval Attached <input type="checkbox"/>	

1. Drill 26" hole to 40'. Set 40' of 20" conductor pipe and cement to surface with Redi-mix.
2. Drill 17½" hole to 450'. Run and set 450' of 13 3/8" 48# H-40 ST&C casing. Cement with 440 Sx. of Class "C" cement + ¼# Flocele/Sx, + 2% CaCl, circulate cement to surface.
3. Drill 12¼" hole to 4300'. Run and set 4300' of 9 5/8" 40# J-55 LT&C casing. Cement with 1000 Sx. of Class "C" 35/65-POZ, tail in with 200 Sx. of Class "C" neat cement. Circulate cement to surface.
4. Drill 8 3/4" hole to 11,500'. Run and set 11,500' of 7" 26# HCP-110 LT&C casing. Cement with 850 Sx. of Class "H" Premium Plus cement + additives, estimate top of cement 7000' from surface.
5. Drill 6 1/8" hole to 13,600'. Run and set a 2400' 4½" 13.5# P-110 ST&C liner from 11,200' to 13,600'TD. Cement with 275 Sx. of Class "H" Premium Plus cement + additives, cement to top of liner.

DISTRICT I
1625 N. FRENCH DR., HOBBS, NM 88240

State of New Mexico
Energy, Minerals and Natural Resources Department

DISTRICT II
1301 W. GRAND AVENUE, ARTESIA, NM 88210

DISTRICT III
1000 Rio Brazos Rd., Aztec, NM 87410

DISTRICT IV
1220 S. ST. FRANCIS DR., SANTA FE, NM 87505

OIL CONSERVATION DIVISION
1220 SOUTH ST. FRANCIS DR.
Santa Fe, New Mexico 87505

Form C-102
Revised October 12, 2005
Submit to Appropriate District Office
State Lease - 4 Copies
Fee Lease - 3 Copies

WELL LOCATION AND ACREAGE DEDICATION PLAT

☐ AMENDED REPORT

API Number 30-025-38107	Pool Code 82240	Pool Name OSUDO MORROW-WEST
Property Code 33010	Property Name BYERS "23"	Well Number 2
OGRID No. 115970	Operator Name UNIT PETROLEUM COMPANY	Elevation 3676'

Surface Location

UL or lot No.	Section	Township	Range	Lot Idn	Feet from the	North/South line	Feet from the	East/West line	County
A	23	20-S	35-E		1280	NORTH	1230	EAST	LEA

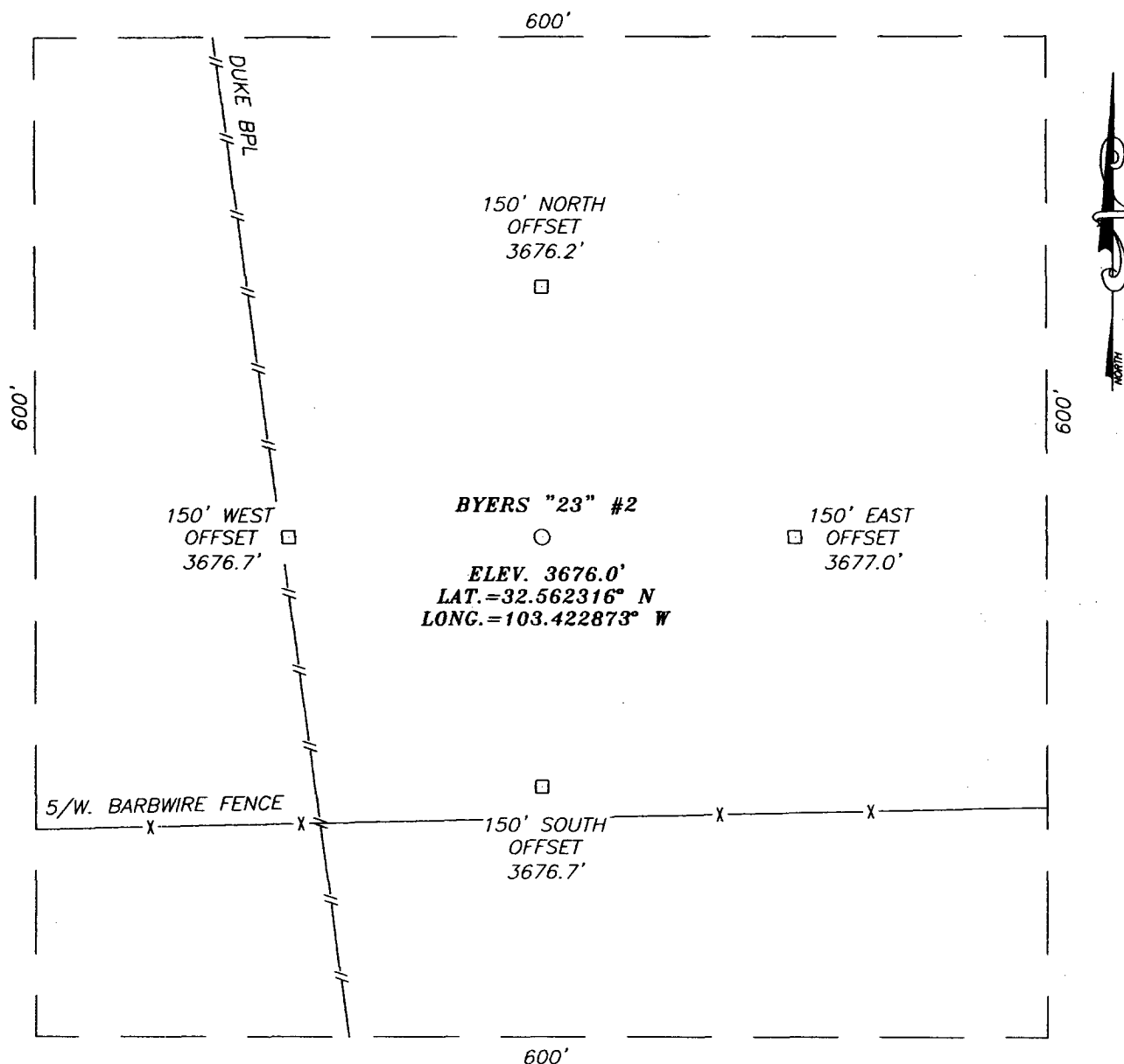
Bottom Hole Location If Different From Surface

UL or lot No.	Section	Township	Range	Lot Idn	Feet from the	North/South line	Feet from the	East/West line	County
Dedicated Acres 320	Joint or Infill	Consolidation Code	Order No.						

NO ALLOWABLE WILL BE ASSIGNED TO THIS COMPLETION UNTIL ALL INTERESTS HAVE BEEN CONSOLIDATED
OR A NON-STANDARD UNIT HAS BEEN APPROVED BY THE DIVISION

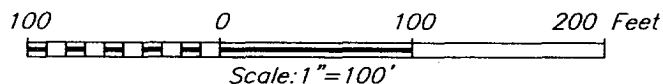
<p>GEODETIC COORDINATES NAD 27 NME</p> <p>Y=569482.0 N X=780506.9 E</p> <p>LAT.=32°56'23.16" N LONG.=103°42'28.73" W</p> <p>LAT.=32°33'44.34" N LONG.=103°25'22.34" W</p> <p>Existing Gas Well</p>	<p>OPERATOR CERTIFICATION</p> <p>I hereby certify that the information herein is true and complete to the best of my knowledge and belief, and that this organization either owns a working interest or unleased mineral interest in the land including the proposed bottom hole location or has a right to drill this well at this location pursuant to a contract with an owner of such mineral or working interest, or to a voluntary pooling agreement or a compulsory pooling order heretofore entered by the division.</p> <p><i>Joe T. Janica</i> Signature Date Joe T. Janica 08/31/06 Printed Name Agent</p> <p>SURVEYOR CERTIFICATION</p> <p>I hereby certify that the well location shown on this plat was plotted from field notes of actual surveys made by me or under my supervision, and that the same is true and correct to the best of my belief.</p> <p>JULY 27, 2006</p> <p>Date Surveyed MR Signature & Seal of Professional Surveyor <i>Gary B. Eidson</i> 8/2/06 NEW MEXICO 06.11.1268 Certificate No. GARY EIDSON 12841 RONALD J. EIDSON 3239</p>
--	---

SECTION 23, TOWNSHIP 20 SOUTH, RANGE 35 EAST, N.M.P.M.,
 LEA COUNTY, NEW MEXICO



DIRECTIONS TO LOCATION

FROM THE INTERSECTION OF ST. HWY. #176 AND CO. RD. E-35 (SIMS RD.), GO NORTH ON SIMS RD. APPROX. 2.0 MILES. TURN RIGHT AND GO EAST-NORTHEAST APPROX. 0.5 MILES. VEER LEFT AND GO NORTH APPROX. 1.5 MILES. VEER LEFT AND GO WEST APPROX. 0.2 MILES. TURN RIGHT AND GO NORTHEAST APPROX. 1.4 MILES. TURN RIGHT AND GO EAST APPROX. 0.2 MILES TO BYERS "23" #1 WELL. THIS LOCATION IS APPROX. 600. FEET NORTHWEST.



UNIT PETROLEUM COMPANY

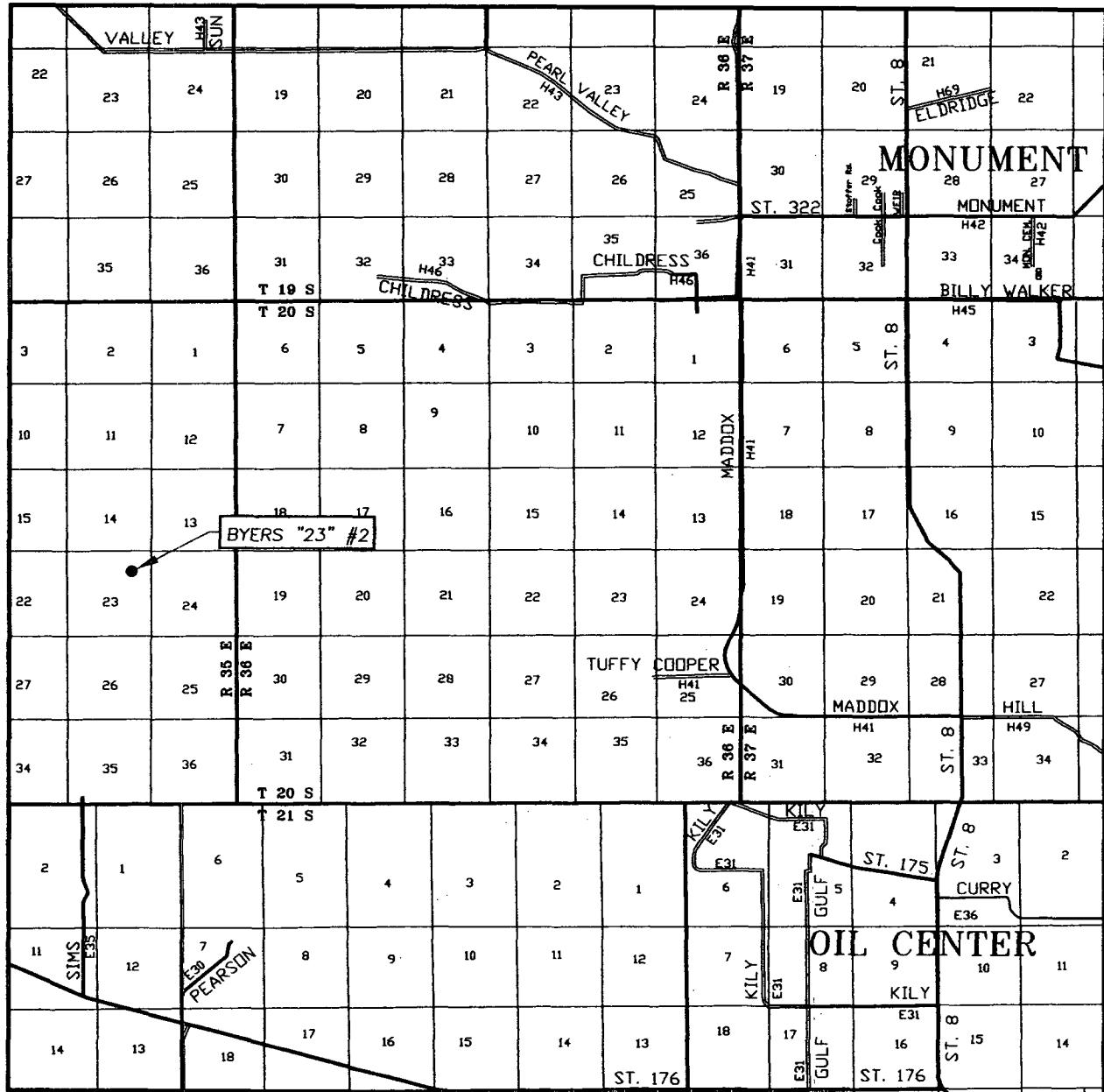
BYERS "23" #2
 LOCATED 1280 FEET FROM THE NORTH LINE
 AND 1230 FEET FROM THE EAST LINE OF SECTION 23,
 TOWNSHIP 20 SOUTH, RANGE 35 EAST, N.M.P.M.,
 LEA COUNTY, NEW MEXICO.



PROVIDING SURVEYING SERVICES
 SINCE 1946
JOHN WEST SURVEYING COMPANY
 412 N. DAL PASO
 HOBBS, N.M. 88240
 (505) 383-3117

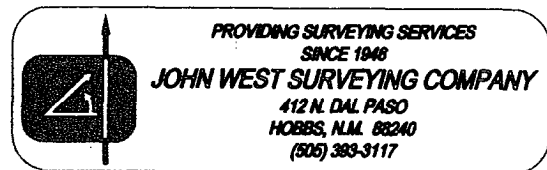
Survey Date: 07/27/06	Sheet 1 of 1 Sheets
W.O. Number: 06.11.1268	Dr By: M.R.
Date: 07/31/06	Disk: CD#6
06111268	Scale: 1"=100'

VICINITY MAP

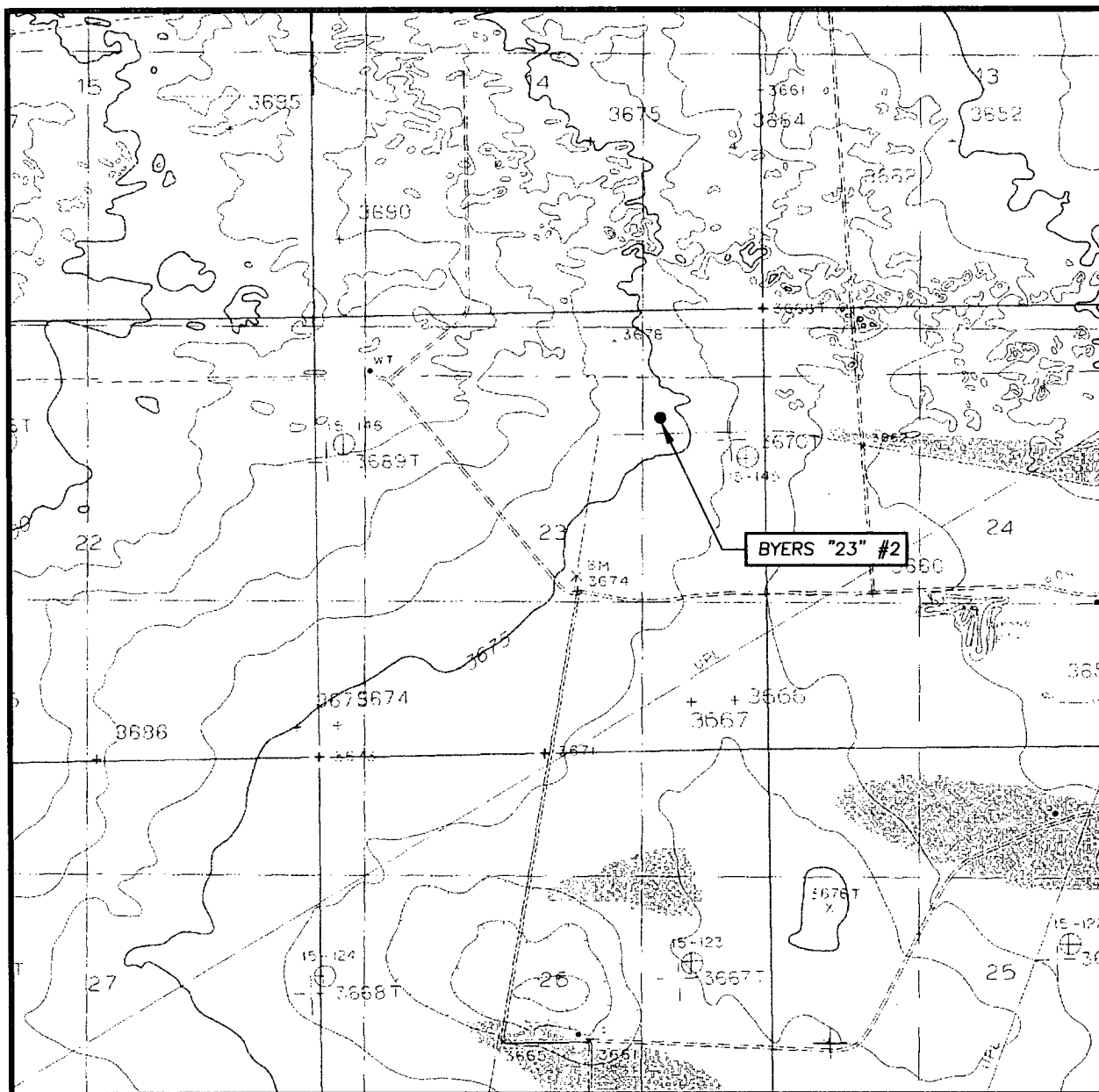


SCALE: 1" = 2 MILES

SEC. 23 TWP. 20-S RGE. 35-E
 SURVEY N.M.P.M.
 COUNTY LEA STATE NEW MEXICO
 DESCRIPTION 1280' FNL & 1230' FEL
 ELEVATION 3676'
 UNIT
 OPERATOR PETROLEUM COMPANY
 LEASE BYERS "23"



LOCATION VERIFICATION MAP



SCALE: 1" = 2000'

CONTOUR INTERVAL:
MONUMENT SW, N.M. - 5'

SEC. 23 TWP. 20-S RGE. 35-E

SURVEY N.M.P.M.

COUNTY LEA STATE NEW MEXICO


DESCRIPTION 1280' FNL & 1230' FEL

ELEVATION 3676'

UNIT
OPERATOR PETROLEUM COMPANY

LEASE BYERS "23"

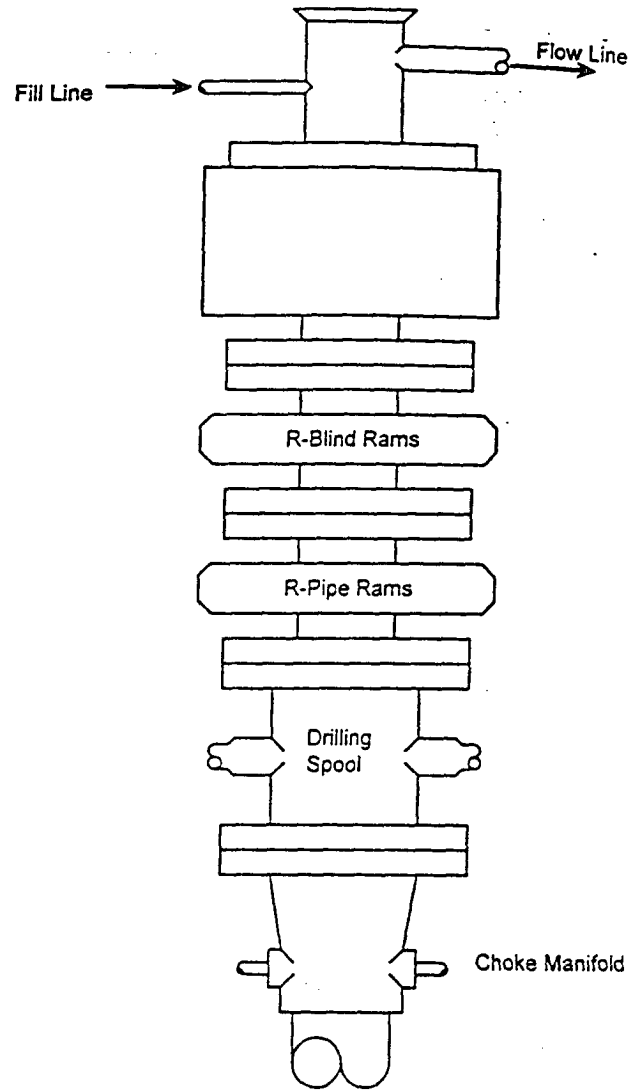
U.S.G.S. TOPOGRAPHIC MAP
MONUMENT SW, N.M.



PROVIDING SURVEYING SERVICES
SINCE 1946
JOHN WEST SURVEYING COMPANY
 412 N. DAL PASO
 HOBBS, N.M. 88240
 (505) 383-3117

BLOWOUT PREVENTER SYSTEM

5000 PSI



Type 1500 SERIES
5000 psi WP

Choke Manifold Assembly for 5M WP System

