

District I

1625 N. French Dr., Hobbs, NM 88240

District II

1301 W. Grand Avenue, Artesia, NM 88210

District III

1000 Rio Brazos Road, Aztec, NM 87410

District IV

1220 S. St. Francis Dr., Santa Fe, NM 87505

State of New Mexico
Energy Minerals and Natural ResourcesOil Conservation Division
1220 South St. Francis Dr.
Santa Fe, NM 87505Form C-101
Revised March 17, 1999Submit to appropriate District Office
State Lease - 6 Copies
Fee Lease - 5 Copies☐ AMENDED REPORT

APPLICATION FOR PERMIT TO DRILL, RE-ENTER, DEEPEN, PLUGBACK, OR ADD A ZONE

¹ Operator Name and Address Limark Corporation P.O. Box 10708 Midland, Texas 79702-7708		² OGRID Number 152527
		³ API Number 30-025-36373
³ Property Code 30904	⁵ Property Name State DZ	⁶ Well No. 2

⁷ Surface Location

UL or lot no.	Section	Township	Range	Lot Idn	Feet from the	North/South line	Feet from the	East/West line	County
M	23	12S	38E		990	South	1200	West	Lea

⁸ Proposed Bottom Hole Location If Different From Surface

UL or lot no.	Section	Township	Range	Lot Idn	Feet from the	North/South line	Feet from the	East/West line	County

⁹ Proposed Pool 1
Trinity; Wolfcamp¹⁰ Proposed Pool 2

¹¹ Work Type Code N	¹² Well Type Code O	¹³ Cable/Rotary R	¹⁴ Lease Type Code S	¹⁵ Ground Level Elevation 3793' GR
¹⁶ Multiple No	¹⁷ Proposed Depth 9300'	¹⁸ Formation Wolfcamp	¹⁹ Contractor Patterson	²⁰ Spud Date

²¹ Proposed Casing and Cement Program

Hole Size	Casing Size	Casing weight/foot	Setting Depth	Sacks of Cement	Estimated TOC
17 1/2"	13 3/8"	48# & 54.5#	400'	360 sx	surface
12 1/4"	9 5/8"	36# & 40#	4500'	1340 sx	surface
8 3/4"	7"	23# & 26#	9300'	325 sx	7500' (est)

²² Describe the proposed program. If this application is to DEEPEN or PLUG BACK, give the data on the present productive zone and proposed new productive zone.

Describe the blowout prevention program, if any. Use additional sheets if necessary.

Drill 17 1/2" surface hole to 400'. Run 13 3/8" casing. Cement with 360 sx cement. Drill 12 1/4" hole to 4500'. Run 9 5/8" casing. Cement with 1340 sx cement and circulate to surface. Drill 8 3/4" hole to 9300'. Run logs. Run 7" casing. Cement with 325 sx cement. Perforate in Wolfcamp zone. Producing into existing battery.

Blowout preventor attached.

Permit Expires 1 Year From Approval
Date Unless Drilling Underway²³ I hereby certify that the information given above is true and complete to the best of my knowledge and belief.

Signature:

Printed name: Mark A. Philpy

Title: President

Date: 08/14/2003

Phone: 915/684-5765

OIL CONSERVATION DIVISION

Approved by:

Title:

Approval Date: AUG 18 2003

Expiration Date:

Conditions of Approval:

Attached ☒ *Waiting on NSL. Drill @ own risk*

★ Approval to drill only -- CANNOT produce until Non-Standard Location Approved from OCD in Santa Fe.

DISTRICT I
P.O. Box 1988, Hobbs, NM 88241-1988

State of New Mexico
Energy, Minerals and Natural Resources Department

Form C-102
Revised February 10, 1994
Submit to Appropriate District Office
State Lease - 4 Copies
Fee Lease - 3 Copies

DISTRICT II
P.O. Drawer DD, Artesia, NM 88211-0719

OIL CONSERVATION DIVISION

P.O. Box 2088
Santa Fe, New Mexico 87504-2088

DISTRICT III
1000 Rio Brazos Rd., Aztec, NM 87410

DISTRICT IV
P.O. BOX 2088, SANTA FE, N.M. 87504-2088

WELL LOCATION AND ACREAGE DEDICATION PLAT

☐ AMENDED REPORT

API Number 30-025-36373	Pool Code 59890	Pool Name Trinity; Wolfcamp
Property Code 030904	Property Name STATE DZ	Well Number 2
OGRID No. 152527	Operator Name LIMARK CORPORATION	Elevation 3793'

Surface Location

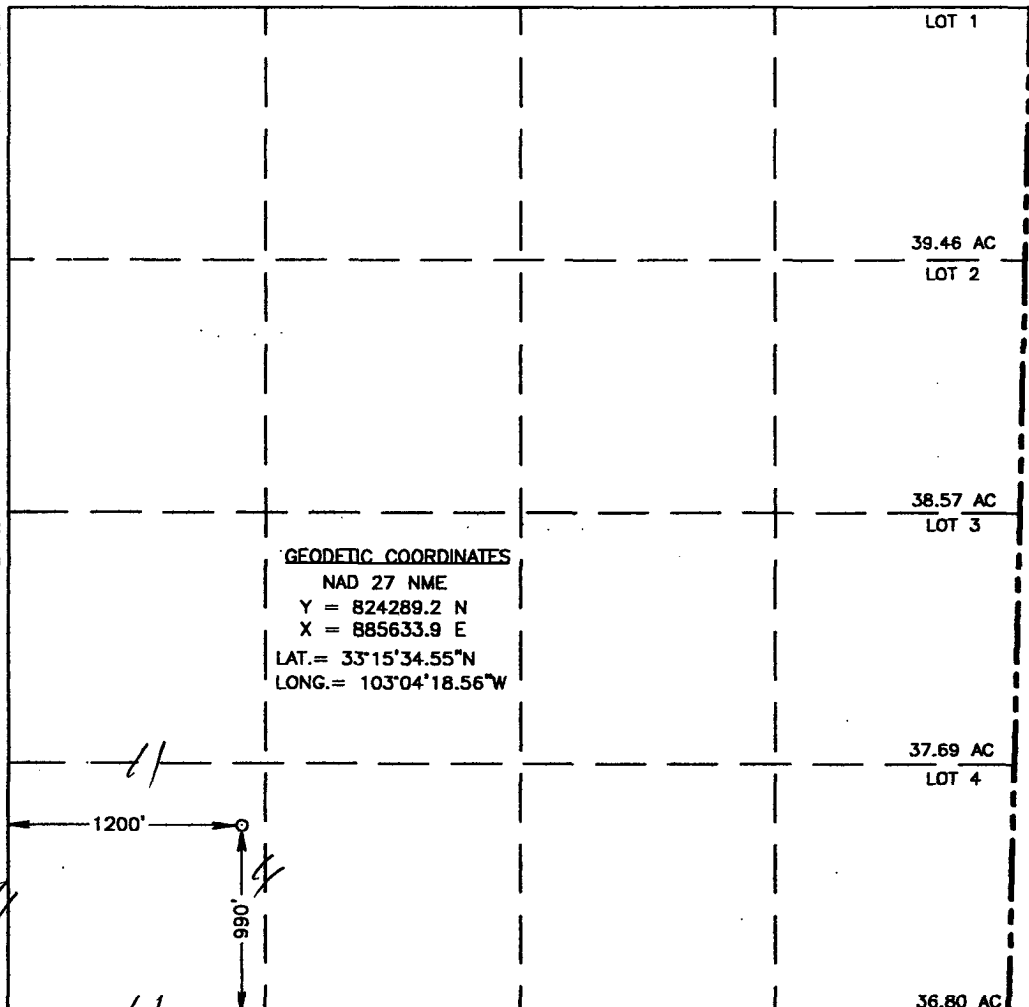
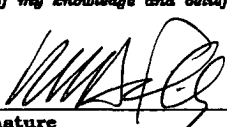
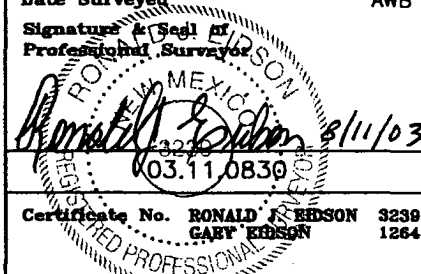
UL or lot No. M	Section 23	Township 12-S	Range 38-E	Lot Idn	Feet from the 990'	North/South line SOUTH	Feet from the 1200'	East/West line WEST	County LEA
---------------------------	----------------------	-------------------------	----------------------	---------	------------------------------	----------------------------------	-------------------------------	-------------------------------	----------------------

Bottom Hole Location If Different From Surface

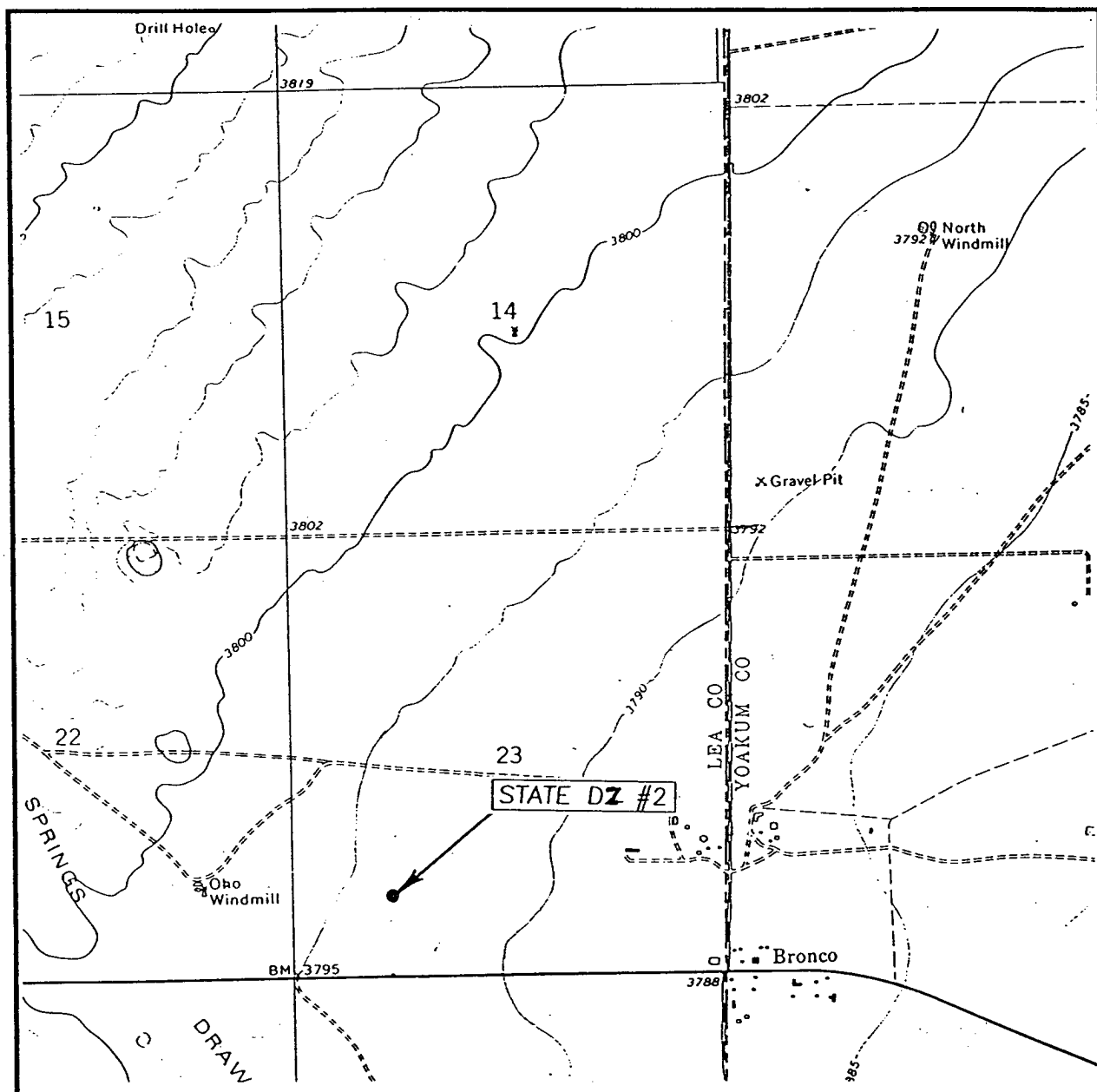
UL or lot No.	Section	Township	Range	Lot Idn	Feet from the	North/South line	Feet from the	East/West line	County
---------------	---------	----------	-------	---------	---------------	------------------	---------------	----------------	--------

Dedicated Acres 40	Joint or Infill	Consolidation Code	Order No.
------------------------------	-----------------	--------------------	-----------

NO ALLOWABLE WILL BE ASSIGNED TO THIS COMPLETION UNTIL ALL INTERESTS HAVE BEEN CONSOLIDATED
OR A NON-STANDARD UNIT HAS BEEN APPROVED BY THE DIVISION

 <p>LOT 1</p> <p>39.46 AC LOT 2</p> <p>38.57 AC LOT 3</p> <p>37.69 AC LOT 4</p> <p>36.80 AC</p> <p>GEODETIC COORDINATES NAD 27 NME Y = 824289.2 N X = 885633.9 E LAT. = 33°15'34.55"N LONG. = 103°04'18.56"W</p>	OPERATOR CERTIFICATION I hereby certify the the information contained herein is true and complete to the best of my knowledge and belief.  Signature Mark A. Philpy Printed Name President Title 08/14/2003 Date
	SURVEYOR CERTIFICATION I hereby certify that the well location shown on this plat was plotted from field notes of actual surveys made by me or under my supervision and that the same is true and correct to the best of my belief. August 08, 2003 Date Surveyed AWB Signature & Seal of Professional Surveyor  Certificate No. RONALD J. EDSON 3239 GARY EDSON 12641

LOCATION VERIFICATION MAP



SCALE: 1" = 2000'

CONTOUR INTERVAL: 5'
BRONCO, N.M.

SEC. 23 TWP. 12-S RGE. 38-E

SURVEY N.M.P.M.

COUNTY LEA

DESCRIPTION 990' FSL & 1200' FWL

ELEVATION 3793'

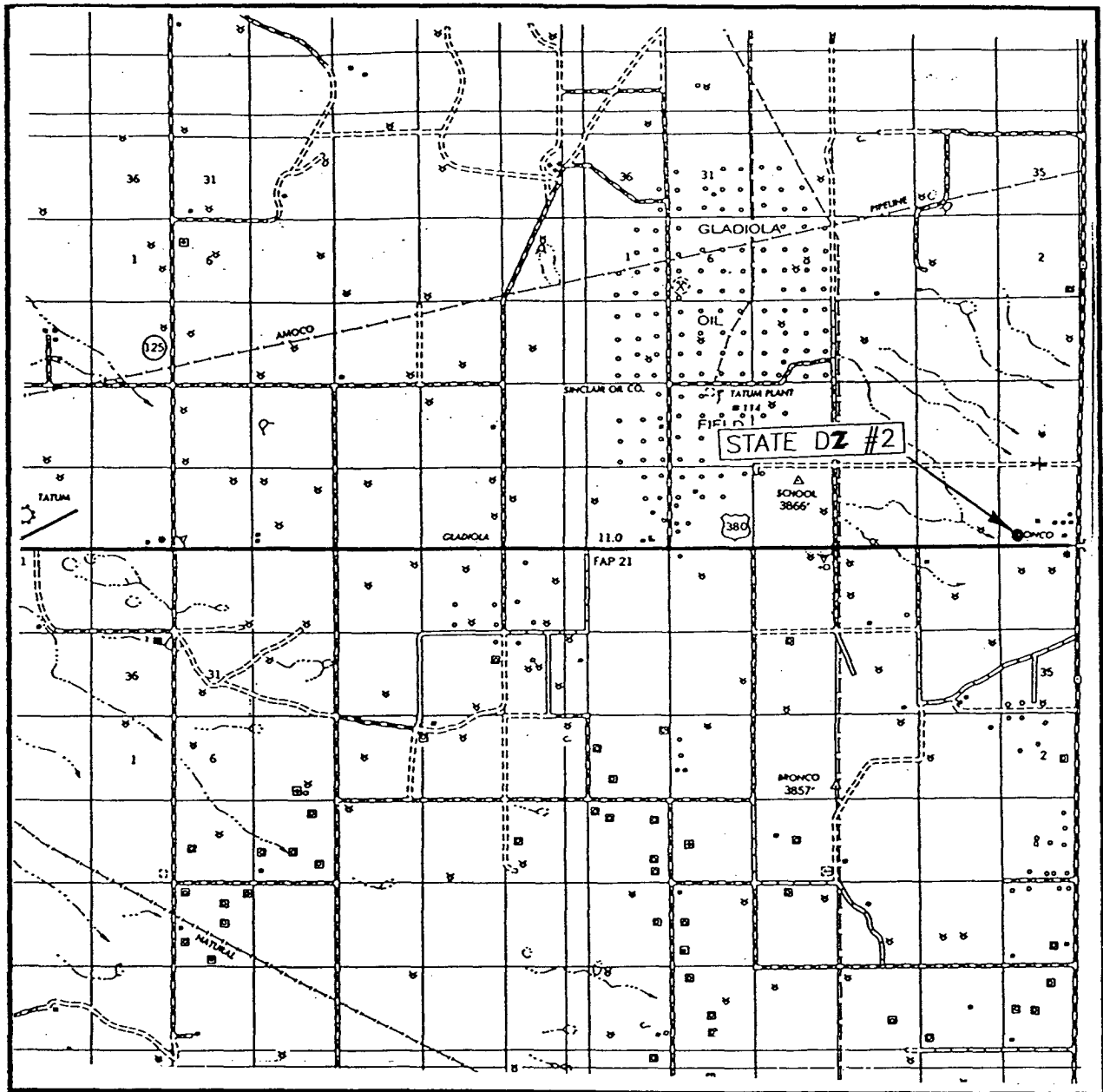
OPERATOR LIMARK CORPORATION

LEASE STATE DZ

U.S.G.S. TOPOGRAPHIC MAP
BRONCO, N.M.

JOHN WEST SURVEYING
HOBBS, NEW MEXICO
(505) 393-3117

VICINITY MAP



SCALE: 1" = 2 MILES

SEC. 23 TWP. 12-S RGE. 38-E

SURVEY N.M.P.M.

COUNTY LEA

DESCRIPTION 990' FSL & 1200' FWL

ELEVATION 3793'

OPERATOR LIMARK CORPORATION

LEASE STATE DZ

JOHN WEST SURVEYING
HOBBS, NEW MEXICO
(505) 393-3117

Patterson-UTI Drilling Company

Rig # 478

11,500'

DRAWWORKS

Wilson 75

ENGINES

2 Cat D-3406-TA 750HP

DERRICK

Wilson 131", 344,000# hook load w/10 lines

SUBSTRUCTURE

13'5" w/10.5' clear height to rotary beam

MUD PUMPS

2-Ellis Williams 600 w/Cat D-353-TA 450HP max

DRILL STRING

4 1/2" 16.60# Grade E w/4 1/2" XH connections

BLOWOUT PREVENTERS

Shaffer LWS 11" 3000 psi double ram w/(2) 4" openings below-rams. Shaffer 11" 3000 psi annular

MUD SYSTEM

MUD HOUSE

COMMUNICATIONS

24 hour direct cellular telephone

OTHER EQUIPMENT

Blocks. McKissick 536, 250 ton 5 sheave 1" line**Hook.** National 200 ton**Swivel.** Gardner-Denver, SW 200 ton**Rotary Table.****Electrical Power.** 2 - 165 KW AC generators powered by Catapillar D-3306 TC engines**Fresh Water Storage.** Housing. 420 bbl tank w/80 bbl oil compartment

"Hole Requirements will dictate actual Reserve Pit size (TOOLPUSHER SHOULD BE CONSULTED)"

