

District I  
1625 N. French Dr., Hobbs, NM 88240  
District II  
1301 W. Grand Avenue, Artesia, NM 88210  
District III  
1000 Rio Brazos Road, Aztec, NM 87410  
District IV  
1220 S. St. Francis Dr., Santa Fe, NM 87505

State of New Mexico  
Energy Minerals and Natural Resources

Form C-101  
May 27, 2004

Oil Conservation Division  
1220 South St. Francis Dr.  
Santa Fe, NM 87505

Submit to appropriate District Office

☐ AMENDED REPORT

**APPLICATION FOR PERMIT TO DRILL, RE-ENTER, DEEPEN, PLUGBACK, OR ADD A ZONE**

<sup>1</sup> Operator Name and Address John H. Hendrix Corporation P. O. Box 3040 Midland, TX 79702-3040		<sup>2</sup> OGRID Number 012024
<sup>3</sup> Property Code 005142		<sup>4</sup> Property Name Cone, J. R. "B"
<sup>5</sup> Proposed Pool 1 Tubb Oil & Gas		<sup>6</sup> Well No. 3
<sup>7</sup> Proposed Pool 2 Blinebry Oil & Gas		<sup>8</sup> API Number 30-025-22959

**Surface Location**

UL or lot no. O	Section 26	Township 21S	Range 37E	Lot Idn	Feet from the 330	North/South line South	Feet from the 1980	East/Westline East	County Lea
--------------------	---------------	-----------------	--------------	---------	----------------------	---------------------------	-----------------------	-----------------------	---------------

**Proposed Bottom Hole Location If Different From Surface**

UL or lot no.	Section	Township	Range	Lot Idn	Feet from the	North/South line	Feet from the	East/Westline	County
---------------	---------	----------	-------	---------	---------------	------------------	---------------	---------------	--------

**Additional Well Information**

<sup>11</sup> Work Type Code P	<sup>12</sup> Well Type Code O	<sup>13</sup> Cable/Rotary	<sup>14</sup> Lease Type Code P	<sup>15</sup> Ground Level Elevation
<sup>16</sup> Multiple	<sup>17</sup> Proposed Depth	<sup>18</sup> Formation	<sup>19</sup> Contractor	<sup>20</sup> Spud Date
Depth to Groundwater		Distance from nearest fresh water well		Distance from nearest surface water
Pit: Liner: Synthetic <input type="checkbox"/> milst thick Clay <input type="checkbox"/> Pit Volume: _____ bbls Drilling Method: _____				
Closed-Loop System <input type="checkbox"/> Fresh Water <input type="checkbox"/> Brine <input type="checkbox"/> Diesel/Oil-based <input type="checkbox"/> Gas/Air <input type="checkbox"/>				

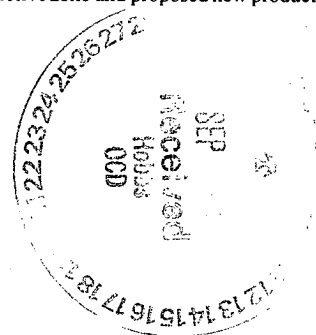
**Proposed Casing and Cement Program**

Hole Size	Casing Size	Casing weight/foot	Setting Depth	Sacks of Cement	Estimated TOC
		NC			

<sup>22</sup> Describe the proposed program. If this application is to DEEPEN or PLUG BACK, give the data on the present productive zone and proposed new productive zone. Describe the blowout prevention program, if any. Use additional sheets if necessary.

1. Set RBP above Abo 6767'.
2. Perf. Tubb - 6026 - 6341'.
3. Acidize & frac & test.
4. Set RBP at 6000'.
5. Perf. Blinebry 5528 - 5857'.
6. Acidize, frac & test.
7. After stabilizing Tubb & Blinebry apply to DHC Wantz Abo, Tubb & Blinebry.

Permit Expires 1 Year From Approval  
Date Unless Drilling Underway  
Plugback



<sup>23</sup> I hereby certify that the information given above is true and complete to the best of my knowledge and belief. I further certify that the drilling pit will be constructed according to NMOCD guidelines <input type="checkbox"/> a general permit <input type="checkbox"/> , or an (attached) alternative OCD-approved plan <input type="checkbox"/> .		<b>OIL CONSERVATION DIVISION</b>	
Printed name: Ronnie H. Westbrook		Approved by: <i>Chris Williams</i>	
Title: Vice President		Title: <b>SEP 11 2006</b> OCD DISTRICT SUPERVISOR/GENERAL MANAGER	
E-mail Address:		Approval Date: _____ Expiration Date: _____	
Date: 09/01/2006	Phone: (432)684-6631	<b>CONDITIONS OF APPROVAL:</b> Approval for Drilling -- CANNOT produce Downhole commingled until DHC is approved according to R-11363 by the OCD District office.	

**District I**

1625 N. French Dr., Hobbs, NM 88240

**District II**

1301 W. Grand Avenue, Artesia, NM 88210

**District III**

1000 Rio Brazos Rd., Aztec, NM 87410

**District IV**

1220 S. St. Francis Dr., Santa Fe, NM 87505

State of New Mexico  
Energy, Minerals & Natural Resources Department  
**OIL CONSERVATION DIVISION**  
1220 South St. Francis Dr.  
Santa Fe, NM 87505

Form C-102

Revised October 12, 2005

Submit to Appropriate District Office

State Lease - 4 Copies

Fee Lease - 3 Copies

☐ AMENDED REPORT**WELL LOCATION AND ACREAGE DEDICATION PLAT**

* API Number 30-025-22959		* Pool Code 60240	* Pool Name Tubb Oil & Gas
* Property Code 005142	* Property Name Cone, J. R. "B"		* Well Number 3
* OGRID No. 012024	* Operator Name John H. Hendrix Corporation		* Elevation 3376'

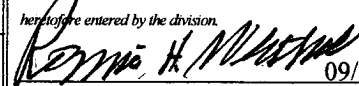
**<sup>10</sup> Surface Location**

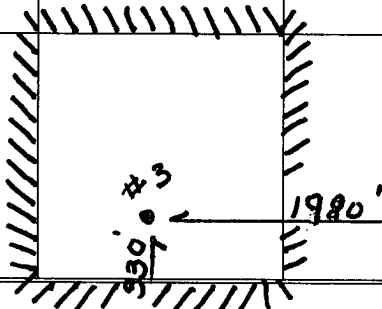
UL or lot no.	Section	Township	Range	Lot Idn	Feet from the	North/South line	Feet from the	East/West line	County
O	26	21S	37E		330	South	1980	East	Lea

**<sup>11</sup> Bottom Hole Location If Different From Surface**

UL or lot no.	Section	Township	Range	Lot Idn	Feet from the	North/South line	Feet from the	East/West line	County
" Dedicated Acres 40		" Joint or Infill		" Consolidation Code		" Order No.			

No allowable will be assigned to this completion until all interests have been consolidated or a non-standard unit has been approved by the division.

16					<b><sup>17</sup> OPERATOR CERTIFICATION</b> <i>I hereby certify that the information contained herein is true and complete to the best of my knowledge and belief, and that this organization either owns a working interest or unleased mineral interest in the land including the proposed bottom hole location or has a right to drill this well at this location pursuant to a contract with an owner of such a mineral or working interest, or to a voluntary pooling agreement or a compulsory pooling order heretofore entered by the division.</i>  Signature <span style="float: right;">Date 09/01/2006</span> <b>Ronnie H. Westbrook</b> Printed Name
					<b><sup>18</sup> SURVEYOR CERTIFICATION</b> <i>I hereby certify that the well location shown on this plat was plotted from field notes of actual surveys made by me or under my supervision, and that the same is true and correct to the best of my belief.</i> Date of Survey Signature and Seal of Professional Surveyor:  Certificate Number



**District I**

1625 N. French Dr., Hobbs, NM 88240

**District II**

1301 W. Grand Avenue, Artesia, NM 88210

**District III**

1000 Rio Brazos Rd., Aztec, NM 87410

**District IV**

1220 S. St. Francis Dr., Santa Fe, NM 87505

State of New Mexico  
Energy, Minerals & Natural Resources Department  
**OIL CONSERVATION DIVISION**  
1220 South St. Francis Dr.  
Santa Fe, NM 87505

Form C-102

Revised October 12, 2005

Submit to Appropriate District Office

State Lease - 4 Copies

Fee Lease - 3 Copies

☐ AMENDED REPORT**WELL LOCATION AND ACREAGE DEDICATION PLAT**

'API Number 30-025-22959		'Pool Code 06660		'Pool Name Blinebry Oil & Gas	
'Property Code 005142		'Property Name Cone, J. R. "B"			'Well Number 3
'OGRID No. 012024		'Operator Name John H. Hendrix Corporation			'Elevation 3376'

**<sup>10</sup> Surface Location**

UL or lot no.	Section	Township	Range	Lot Idn	Feet from the	North/South line	Feet from the	East/West line	County
O	26	21S	37E		330	South	1980	East	Lea

**<sup>11</sup> Bottom Hole Location If Different From Surface**

UL or lot no.	Section	Township	Range	Lot Idn	Feet from the	North/South line	Feet from the	East/West line	County

<sup>12</sup> Dedicated Acres 40	<sup>13</sup> Joint or Infill	<sup>14</sup> Consolidation Code	<sup>15</sup> Order No.
-------------------------------------	-------------------------------	----------------------------------	-------------------------

No allowable will be assigned to this completion until all interests have been consolidated or a non-standard unit has been approved by the division.

<div style="text-align: center;"> </div>	<b><sup>17</sup> OPERATOR CERTIFICATION</b> <i>I hereby certify that the information contained herein is true and complete to the best of my knowledge and belief, and that this organization either owns a working interest or unleased mineral interest in the land including the proposed bottom hole location or has a right to drill this well at this location pursuant to a contract with an owner of such a mineral or working interest, or to a voluntary pooling agreement or a compulsory pooling order heretofore entered by the division.</i> <div style="text-align: right;"> </div> <div style="text-align: right;"> 09/01/2006  Date </div> <div style="text-align: right;"> Ronnie H. Westbrook  Printed Name </div>
	<b><sup>18</sup> SURVEYOR CERTIFICATION</b> <i>I hereby certify that the well location shown on this plat was plotted from field notes of actual surveys made by me or under my supervision, and that the same is true and correct to the best of my belief.</i>
	Date of Survey Signature and Seal of Professional Surveyor:
	Certificate Number