

DISTRICT I
1625 N. FRENCH DR., HOBBES, NM 88240

DISTRICT II
1301 W. GRAND AVENUE, ARTESIA, NM 88210

DISTRICT III
1000 Rio Brazos Rd., Aztec, NM 87410

DISTRICT IV
1220 S. ST. FRANCIS DR., SANTA FE, NM 87505

State of New Mexico
Energy, Minerals and Natural Resources Department

OIL CONSERVATION DIVISION
1220 SOUTH ST. FRANCIS DR.
Santa Fe, New Mexico 87505

Form C-102
Revised October 12, 2005
Submit to Appropriate District Office
State Lease - 4 Copies
Fee Lease - 3 Copies

WELL LOCATION AND ACREAGE DEDICATION PLAT

☐ AMENDED REPORT

API Number 30-025-3819	Pool Code 24170	Pool Name Eunice San Andres South
Property Code 34816	Property Name NEW MEXICO STATE "S"	Well Number 54
OGRID No. 873	Operator Name APACHE CORPORATION	Elevation 3366'

Surface Location

UL or lot No.	Section	Township	Range	Lot Idn	Feet from the	North/South line	Feet from the	East/West line	County
M	2	22-S	37-E		950	SOUTH	980	WEST	LEA

Bottom Hole Location If Different From Surface

UL or lot No.	Section	Township	Range	Lot Idn	Feet from the	North/South line	Feet from the	East/West line	County
Dedicated Acres 50		Joint or Infill	Consolidation Code	Order No.					

NO ALLOWABLE WILL BE ASSIGNED TO THIS COMPLETION UNTIL ALL INTERESTS HAVE BEEN CONSOLIDATED
OR A NON-STANDARD UNIT HAS BEEN APPROVED BY THE DIVISION

LOT 4	LOT 3	LOT 2	LOT 1
39.78 AC	39.76 AC	39.76 AC	39.74 AC
GEODETIC COORDINATES NAD 27 NME Y=517168.3 N X=868638.2 E LAT.=32.416146° N LONG.=103.138768° W LAT.=32°24'58" N LONG.=103°08'20" W			
OPERATOR CERTIFICATION I hereby certify that the information herein is true and complete to the best of my knowledge and belief, and that this organization either owns a working interest or unleased mineral interest in the land including the proposed bottom hole location or has a right to drill this well at this location pursuant to a contract with an owner of such mineral or working interest, or to a voluntary pooling agreement or a compulsory pooling order heretofore entered by the division. Signature Date Printed Name 9/12/06			
SURVEYOR CERTIFICATION I hereby certify that the well location shown on this plat was plotted from field notes of actual surveys made by me or under my supervision, and that the same is true and correct to the best of my belief. JUNE 22, 2006 Date Surveyed JR Signature & Seal of Professional Surveyor Certificate No. GARY BIDSON 12841 RONALD R. BIDSON 3239			

State of New Mexico

DISTRICT I

1625 N. FRENCH DR., HOBBS, NM 80240

Energy, Minerals and Natural Resources Department

DISTRICT II

1301 W. GRAND AVENUE, ARTESIA, NM 88210

DISTRICT III

1000 Rio Brazos Rd., Aztec, NM 87410

OIL CONSERVATION DIVISION

1220 SOUTH ST. FRANCIS DR.
Santa Fe, New Mexico 87505

Form C-102
Revised October 12, 2005
Submit to Appropriate District Office
State Lease - 4 Copies
Fee Lease - 3 Copies

DISTRICT IV

1220 S. ST. FRANCIS DR., SANTA FE, NM 87505

WELL LOCATION AND ACREAGE DEDICATION PLAT

☐ AMENDED REPORT

API Number 30-025-3819	Pool Code 50350	Pool Name Penrose Skelly Grayburg
Property Code 34816	Property Name NEW MEXICO STATE "S"	Well Number 54
OGRID No. 873	Operator Name APACHE CORPORATION	Elevation 3366'

Surface Location

UL or lot No.	Section	Township	Range	Lot Idn	Feet from the	North/South line	Feet from the	East/West line	County
M	2	22-S	37-E		950	SOUTH	980	WEST	LEA

Bottom Hole Location If Different From Surface

UL or lot No.	Section	Township	Range	Lot Idn	Feet from the	North/South line	Feet from the	East/West line	County
Dedicated Acres 40	Joint or Infill	Consolidation Code	Order No.						

NO ALLOWABLE WILL BE ASSIGNED TO THIS COMPLETION UNTIL ALL INTERESTS HAVE BEEN CONSOLIDATED
OR A NON-STANDARD UNIT HAS BEEN APPROVED BY THE DIVISION

LOT 4	LOT 3	LOT 2	LOT 1
39.78 AC	39.76 AC	39.76 AC	39.74 AC
<p>GEODETIC COORDINATES NAD 27 NME</p> <p>Y=517168.3 N X=868638.2 E</p> <p>LAT.=32.416146° N LONG.=103.138768° W</p> <p>LAT.=32°24'58" N LONG.=103°08'20" W</p>			
<p>980'</p> <p>950'</p>			

OPERATOR CERTIFICATION

I hereby certify that the information herein is true and complete to the best of my knowledge and belief, and that this organization either owns a working interest or unleased mineral interest in the land including the proposed bottom hole location or has a right to drill this well at this location pursuant to a contract with an owner of such mineral or working interest, or to a voluntary pooling agreement or a compulsory pooling order heretofore entered by the division.

Lana Williams
Signature Date **9/2/06**
Lana Williams
Printed Name

SURVEYOR CERTIFICATION

I hereby certify that the well location shown on this plat was plotted from field notes of actual surveys made by me or under my supervision, and that the same is true and correct to the best of my belief.

JUNE 22, 2006

Date Surveyed **JR**

Signature & Seal of Professional Surveyor
Ronald J. Eidson
6/30/06
06-1110575

Certificate No. **GARY EIDSON 12841**
RONALD J. EIDSON 3239

DISTRICT I
125 N. FRENCH DR., HOBBS, NM 88240

State of New Mexico
Energy, Minerals and Natural Resources Department

DISTRICT II
101 W. GRAND AVENUE, ARTESIA, NM 88210

DISTRICT III
000 Rio Brazos Rd., Aztec, NM 87410

DISTRICT IV
120 S. ST. FRANCIS DR., SANTA FE, NM 87505

OIL CONSERVATION DIVISION
1220 SOUTH ST. FRANCIS DR.
Santa Fe, New Mexico 87505

Form C-102
Revised October 12, 2005
Submit to Appropriate District Office
State Lease - 4 Copies
Fee Lease - 3 Copies

WELL LOCATION AND ACREAGE DEDICATION PLAT

☐ AMENDED REPORT

API Number	Pool Code	Pool Name
Property Code	Property Name NEW MEXICO STATE "S"	Well Number 54
OGRID No.	Operator Name APACHE CORPORATION	Elevation 3366'

Surface Location

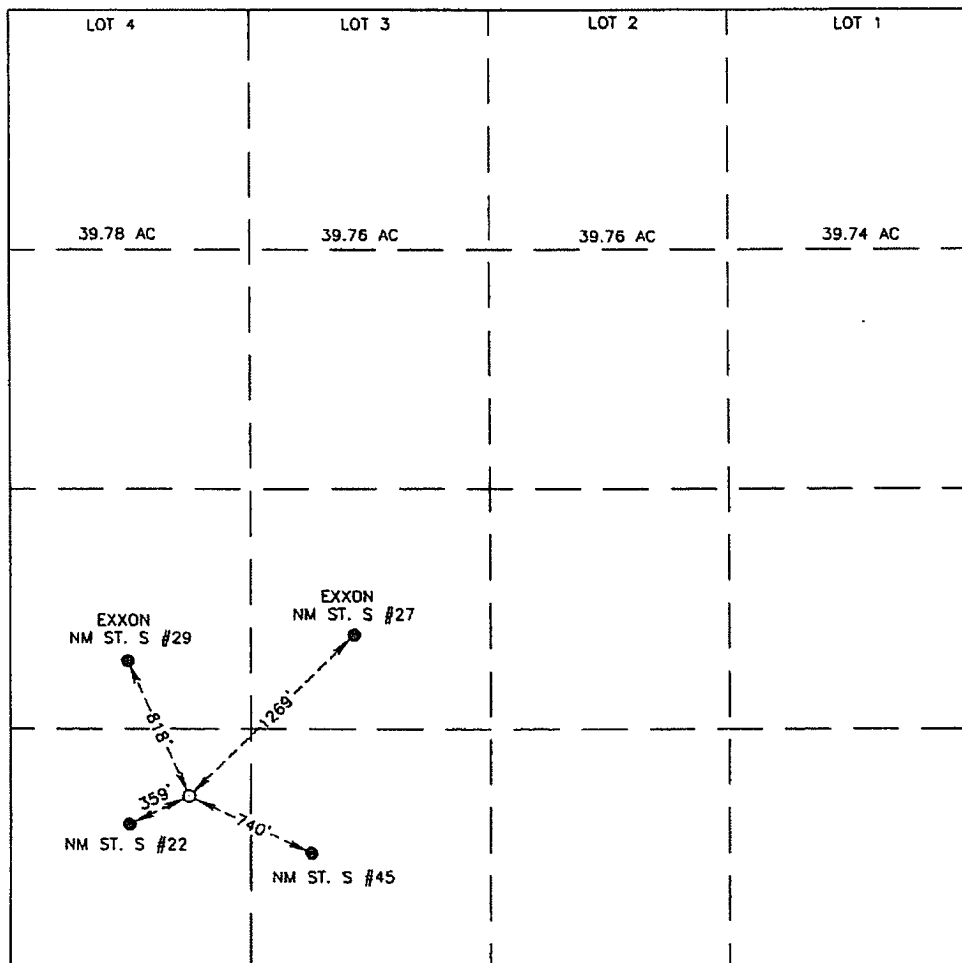
UL or lot No.	Section	Township	Range	Lot Idn	Feet from the	North/South line	Feet from the	East/West line	County
M	2	22-S	37-E		950	SOUTH	980	WEST	LEA

Bottom Hole Location If Different From Surface

UL or lot No.	Section	Township	Range	Lot Idn	Feet from the	North/South line	Feet from the	East/West line	County
---------------	---------	----------	-------	---------	---------------	------------------	---------------	----------------	--------

Dedicated Acres	Joint or Infill	Consolidation Code	Order No.
-----------------	-----------------	--------------------	-----------

NO ALLOWABLE WILL BE ASSIGNED TO THIS COMPLETION UNTIL ALL INTERESTS HAVE BEEN CONSOLIDATED
OR A NON-STANDARD UNIT HAS BEEN APPROVED BY THE DIVISION



OPERATOR CERTIFICATION

I hereby certify that the information herein is true and complete to the best of my knowledge and belief, and that this organization either owns a working interest or unleased mineral interest in the land including the proposed bottom hole location or has a right to drill this well at this location pursuant to a contract with an owner of such mineral or working interest, or to a voluntary pooling agreement or a compulsory pooling order heretofore entered by the division.

Lana Williams
Signature Date 9/12/06
Lana Williams
Printed Name

SURVEYOR CERTIFICATION

I hereby certify that the well location shown on this plat was plotted from field notes of actual surveys made by me or under my supervision, and that the same is true and correct to the best of my belief.

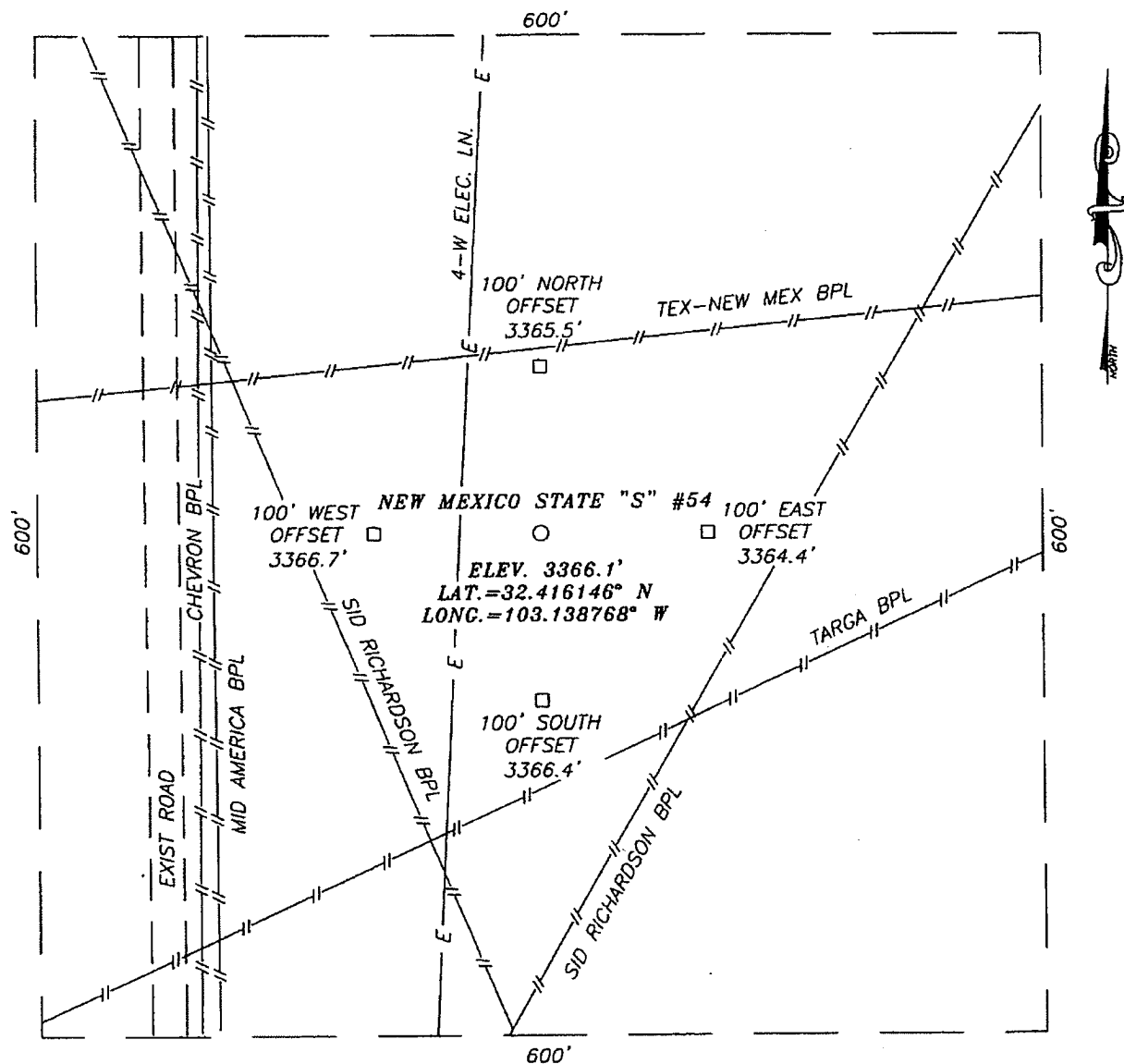
JUNE 22, 2006

Date Surveyed JR
Signature & Seal of
Professional Surveyor

06.11.1057

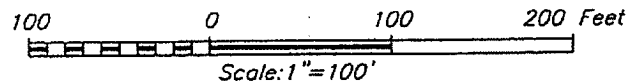
Certificate No. GARY EIDSON 12641
RONALD J. EIDSON 3239

SECTION 2, TOWNSHIP 22 SOUTH, RANGE 37 EAST, N.M.P.M.,
 LEA COUNTY, NEW MEXICO



DIRECTIONS TO LOCATION

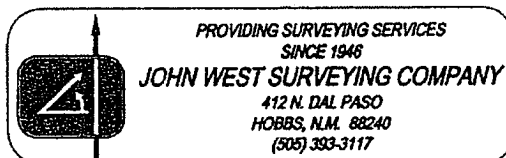
FROM THE INTERSECTION OF ST. HWY. #234 (176) AND ST. HWY. #18 GO SOUTH ON ST. HWY. #18 FOR APPROX. 0.9 MILES. TURN RIGHT AND GO WEST APPROX. 0.8 MILES. TURN LEFT AND GO SOUTH APPROX. 0.5 MILES. THIS LOCATION IS APPROX. 250 FEET EAST OF ROAD.



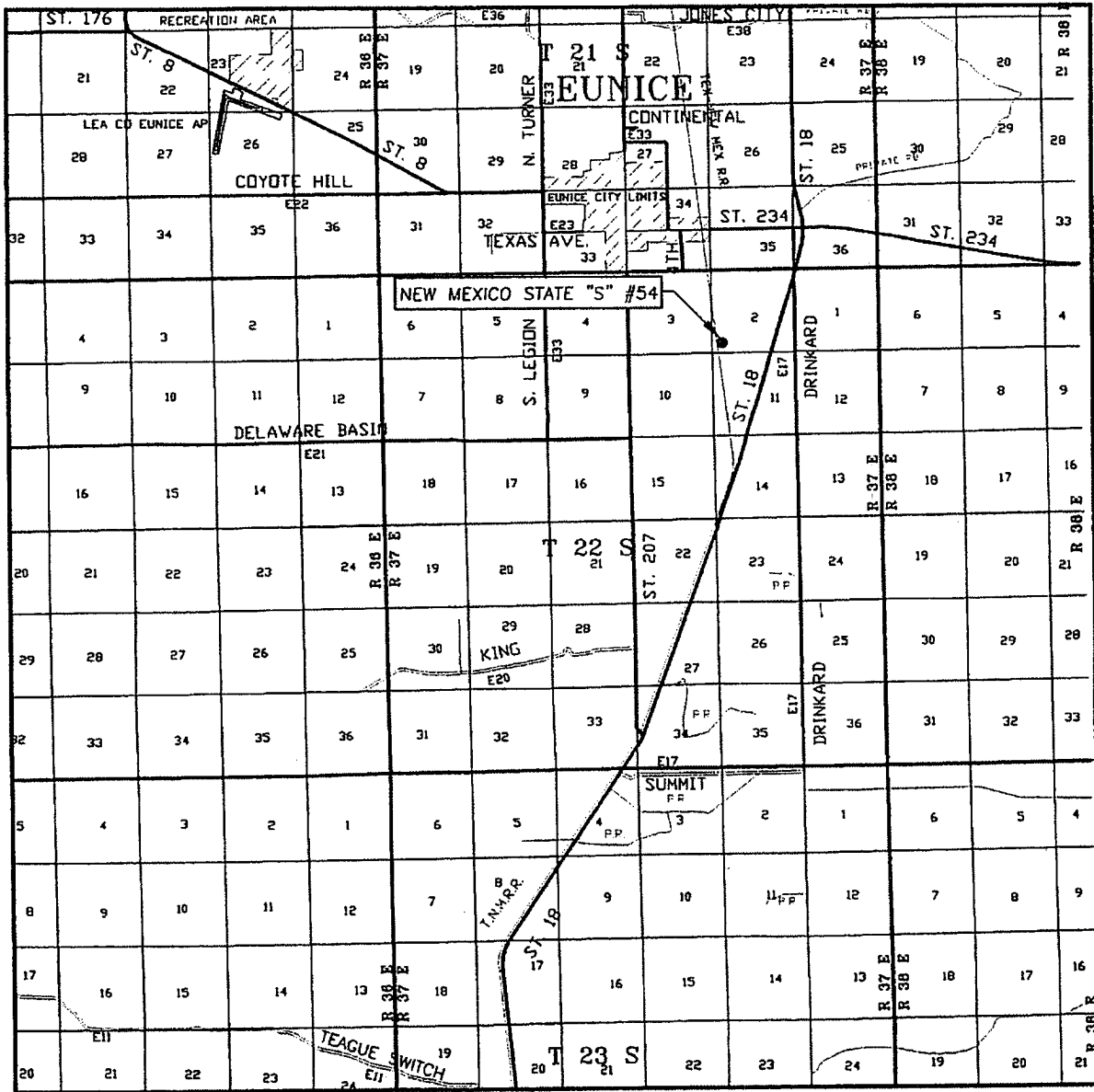
APACHE CORPORATION

NEW MEXICO STATE "S" #54 WELL
 LOCATED 950 FEET FROM THE SOUTH LINE
 AND 980 FEET FROM THE WEST LINE OF SECTION 2,
 TOWNSHIP 22 SOUTH, RANGE 37 EAST, N.M.P.M.,
 LEA COUNTY, NEW MEXICO.

Survey Date: 06/22/06	Sheet 1 of 1 Sheets
W.O. Number: 06.11.1057	Dr By: J.R.
Date: 06/28/06	Disk: CD#6
06111057	Scale: 1"=100'



VICINITY MAP



SCALE: 1" = 2 MILES

SEC. 2 TWP. 22-S RGE. 37-E

SURVEY N.M.P.M.

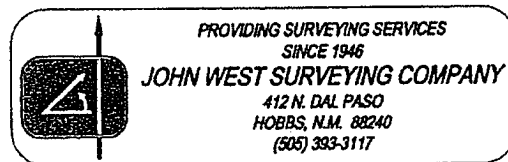
COUNTY LEA STATE NEW MEXICO

DESCRIPTION 950' FSL & 980' FWL

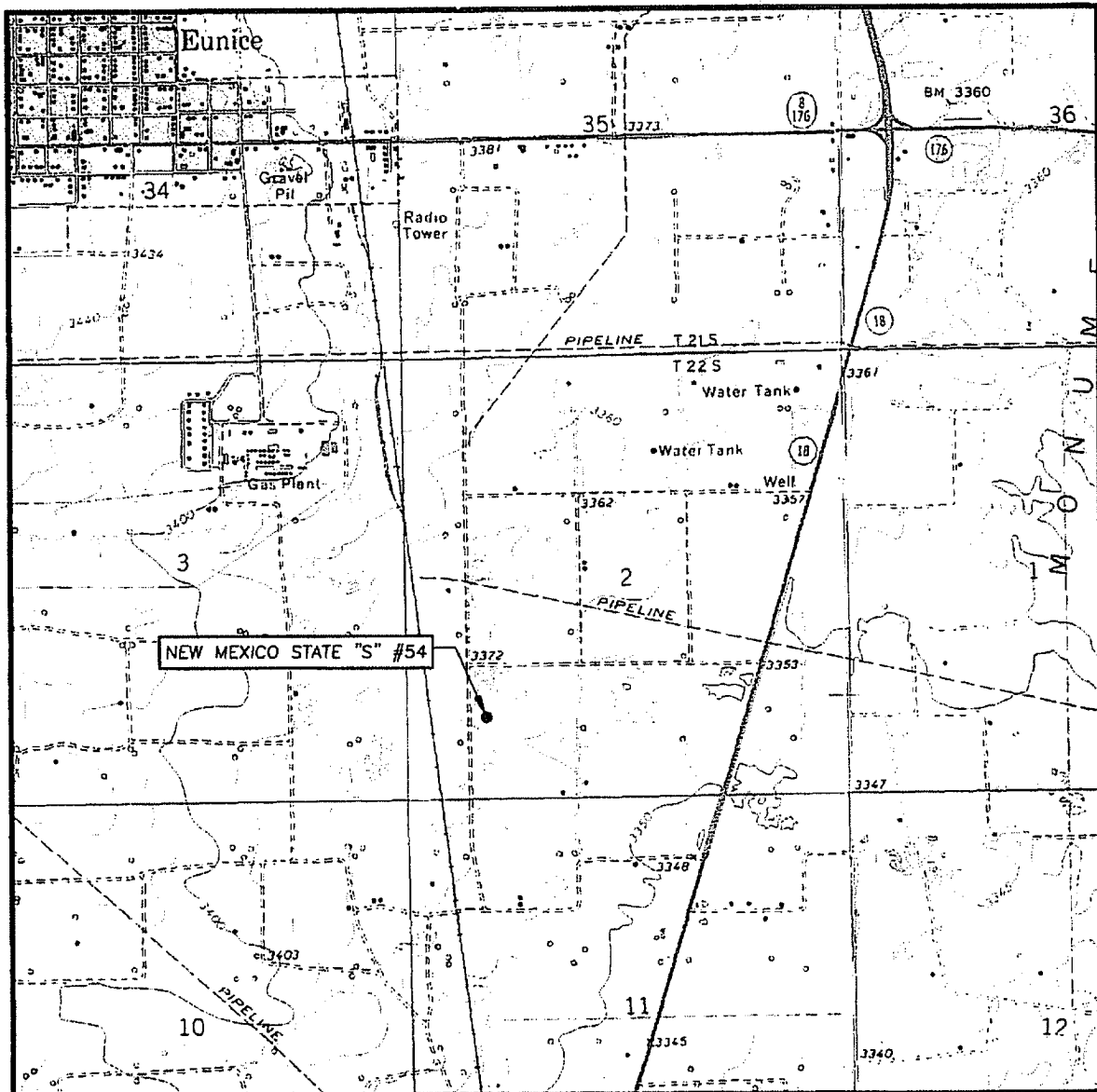
ELEVATION 3366'

OPERATOR APACHE CORPORATION

LEASE NEW MEXICO STATE "S"



LOCATION VERIFICATION MAP



SCALE: 1" = 2000'

CONTOUR INTERVAL:
EUNICE, N.M. - 10'

SEC. 2 TWP. 22-S RGE. 37-E

SURVEY N.M.P.M.

COUNTY LEA STATE NEW MEXICO

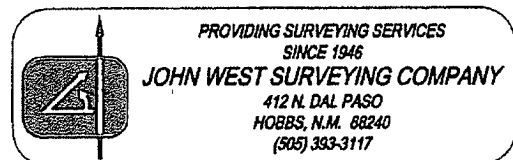
DESCRIPTION 950' FSL & 980' FWL

ELEVATION 3366'

OPERATOR APACHE CORPORATION

LEASE NEW MEXICO STATE "S"

U.S.G.S. TOPOGRAPHIC MAP
EUNICE, N.M.



PROVIDING SURVEYING SERVICES
SINCE 1946

JOHN WEST SURVEYING COMPANY

412 N. DAL PASO
HOBBS, N.M. 78240
(505) 333-3117