

DISTRICT I

1625 N. FRENCH DR., BOBBS, NM 88240

DISTRICT II

1301 W. GRAND AVENUE, ARTESIA, NM 88210

DISTRICT III

1000 Rio Brazos Rd., Aztec, NM 87410

DISTRICT IV

1220 S. ST. FRANCIS DR., SANTA FE, NM 87505

State of New Mexico

Energy, Minerals and Natural Resources Department

OIL CONSERVATION DIVISION

1220 SOUTH ST. FRANCIS DR.
Santa Fe, New Mexico 87505

Form C-102

Revised October 12, 2006

Submit to Appropriate District Office

State Lease - 4 Copies

Fee Lease - 3 Copies

WELL LOCATION AND ACREAGE DEDICATION PLAT

☐ AMENDED REPORT

API Number 30-025-38120	Pool Code 24170	Pool Name Eunice San Andres South
Property Code 3481b	Property Name NEW MEXICO STATE "S"	Well Number 56
OGRID No. 873	Operator Name APACHE CORPORATION	Elevation 3363'

Surface Location

UL or lot No.	Section	Township	Range	Lot Idn	Feet from the	North/South line	Feet from the	East/West line	County
3	2	22-S	37-E		990	NORTH	1650	WEST	LEA

Bottom Hole Location If Different From Surface

UL or lot No.	Section	Township	Range	Lot Idn	Feet from the	North/South line	Feet from the	East/West line	County
Dedicated Acres 80	Joint or Infill	Consolidation Code	Order No.						

NO ALLOWABLE WILL BE ASSIGNED TO THIS COMPLETION UNTIL ALL INTERESTS HAVE BEEN CONSOLIDATED
OR A NON-STANDARD UNIT HAS BEEN APPROVED BY THE DIVISION

LOT 4	LOT 3	LOT 2	LOT 1
39.78 AC	39.76 AC	39.76 AC	39.74 AC
<p>GEODETIC COORDINATES NAD 27 NME</p> <p>Y=520498.3 N X=869294.8 E</p> <p>LAT.=32.425277° N LONG.=103.136520° W</p> <p>LAT.=32°25'31" N LONG.=103°08'12" W</p>			
<p>OPERATOR CERTIFICATION</p> <p>I hereby certify that the information herein is true and complete to the best of my knowledge and belief, and that this organization either owns a working interest or unleased mineral interest in the land including the proposed bottom hole location or has a right to drill this well at this location pursuant to a contract with an owner of such mineral or working interest, or to a voluntary pooling agreement or a compulsory pooling order heretofore entered by the division.</p> <p><i>Lana Williams</i> Signature Date <i>Lana Williams 9/12/06</i> Printed Name</p>			
<p>SURVEYOR CERTIFICATION</p> <p>I hereby certify that the well location shown on this plat was plotted from field notes of actual surveys made by me or under my supervision, and that the same is true and correct to the best of my belief.</p> <p>JUNE 22, 2006</p> <p>Date Surveyed _____ JR</p> <p>Signature & Seal of Professional Surveyor <i>Ronald J. Eidson</i> 06.11.1059</p> <p>Certificate No. GARY EIDSON 12841 RONALD J. EIDSON 3239</p>			

DISTRICT I
1625 N. FRENCH DR., HOBBBS, NM 88240

DISTRICT II
1301 W. GRAND AVENUE, ARTESIA, NM 88210

DISTRICT III
1000 Rio Brazos Rd., Aztec, NM 87410

DISTRICT IV
1220 S. ST. FRANCIS DR., SANTA FE, NM 87505

State of New Mexico
Energy, Minerals and Natural Resources Department

OIL CONSERVATION DIVISION
1220 SOUTH ST. FRANCIS DR.
Santa Fe, New Mexico 87505

Form C-102
Revised October 12, 2005
Submit to Appropriate District Office
State Lease - 4 Copies
Fee Lease - 3 Copies

WELL LOCATION AND ACREAGE DEDICATION PLAT

☐ AMENDED REPORT

API Number 30-025-38120	Pool Cod- 50350	Pool Name Penrose Skelly Grayburg
Property Code 3481p	Property Name NEW MEXICO STATE "S"	Well Number 56
OGRID No. 873	Operator Name APACHE CORPORATION	Elevation 3363'

Surface Location

UL or lot No.	Section	Township	Range	Lot Idn	Feet from the	North/South line	Feet from the	East/West line	County
3	2	22-S	37-E		990	NORTH	1650	WEST	LEA

Bottom Hole Location If Different From Surface

UL or lot No.	Section	Township	Range	Lot Idn	Feet from the	North/South line	Feet from the	East/West line	County

Dedicated Acres	Joint or Infill	Consolidation Code	Order No.

NO ALLOWABLE WILL BE ASSIGNED TO THIS COMPLETION UNTIL ALL INTERESTS HAVE BEEN CONSOLIDATED
OR A NON-STANDARD UNIT HAS BEEN APPROVED BY THE DIVISION

LOT 4	LOT 3	LOT 2	LOT 1
39.78 AC	39.76 AC	39.76 AC	39.74 AC
<p>GEODETIC COORDINATES NAD 27 NME</p> <p>Y=520498.3 N X=869294.8 E</p> <p>LAT.=32.425277° N LONG.=103.136520° W</p> <p>LAT.=32°25'31" N LONG.=103°08'12" W</p>			
<p>OPERATOR CERTIFICATION</p> <p>I hereby certify that the information herein is true and complete to the best of my knowledge and belief, and that this organization either owns a working interest or unleased mineral interest in the land including the proposed bottom hole location or has a right to drill this well at this location pursuant to a contract with an owner of such mineral or working interest, or to a voluntary pooling agreement or a compulsory pooling order heretofore entered by the division.</p> <p><i>Lana Williams</i> Signature Date Lana Williams 9/12/06 Printed Name</p>			
<p>SURVEYOR CERTIFICATION</p> <p>I hereby certify that the well location shown on this plat was plotted from field notes of actual surveys made by me or under my supervision, and that the same is true and correct to the best of my belief.</p> <p>JUNE 22, 2006</p> <p>Date Surveyed _____ JR</p> <p>Signature of Seal of Professional Surveyor _____</p> <p><i>Ronald J. Bidson</i> 06.11.1059</p> <p>Certificate No. CARY BIDSON 12841 RONALD J. BIDSON 3239</p>			

DISTRICT I
1025 N. FRENCH DR., HOBBS, NM 88240

State of New Mexico
Energy, Minerals and Natural Resources Department

DISTRICT II
1301 W. GRAND AVENUE, ARTESIA, NM 88210

DISTRICT III
1000 Rio Brazos Rd., Aztec, NM 87410

DISTRICT IV
1220 S. ST. FRANCIS DR., SANTA FE, NM 87505

OIL CONSERVATION DIVISION
1220 SOUTH ST. FRANCIS DR.
Santa Fe, New Mexico 87505

Form C-102
Revised October 12, 2005
Submit to Appropriate District Office
State Lease - 4 Copies
Fee Lease - 3 Copies

WELL LOCATION AND ACREAGE DEDICATION PLAT

☐ AMENDED REPORT

API Number 30-025-38120	Pool Code	Pool Name
Property Code 34816	Property Name NEW MEXICO STATE "S"	Well Number 56
GRID No. 873	Operator Name APACHE CORPORATION	Elevation 3363'

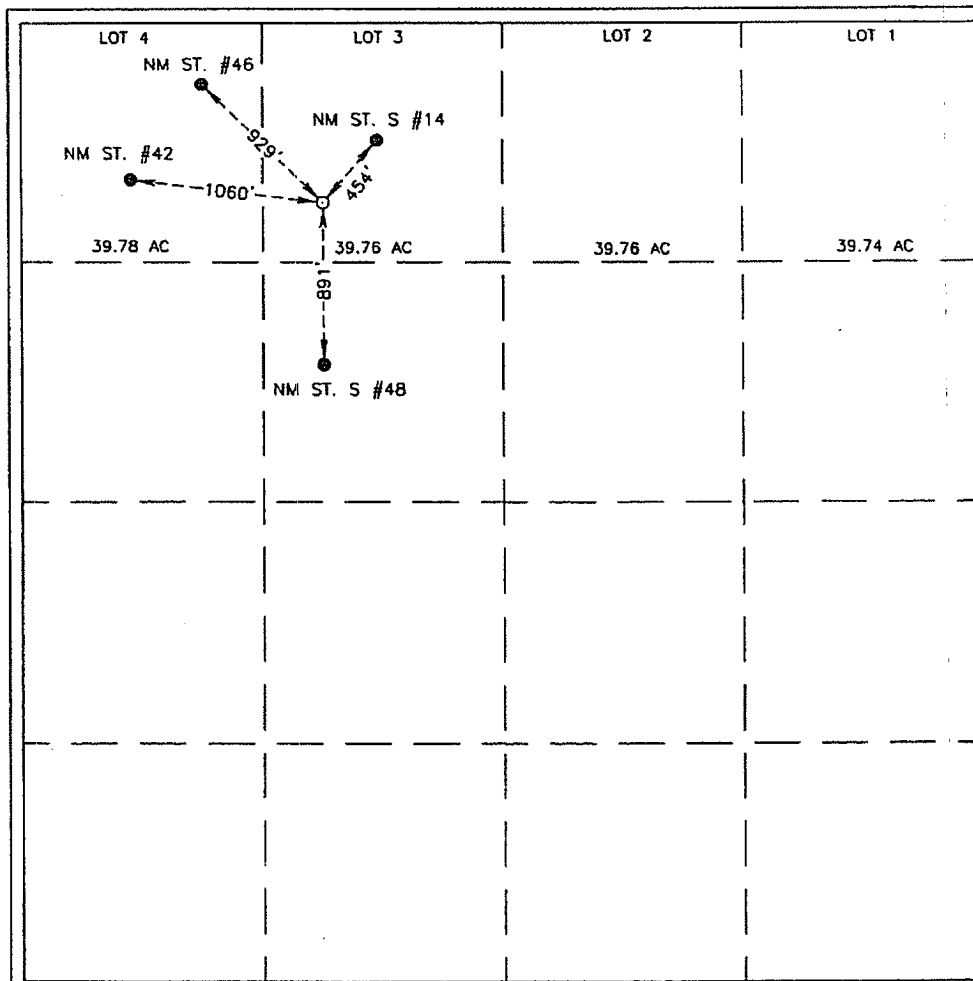
Surface Location

UL or lot No.	Section	Township	Range	Lot Idn	Feet from the	North/South line	Feet from the	East/West line	County
3	2	22-S	37-E		990	NORTH	1650	WEST	LEA

Bottom Hole Location If Different From Surface

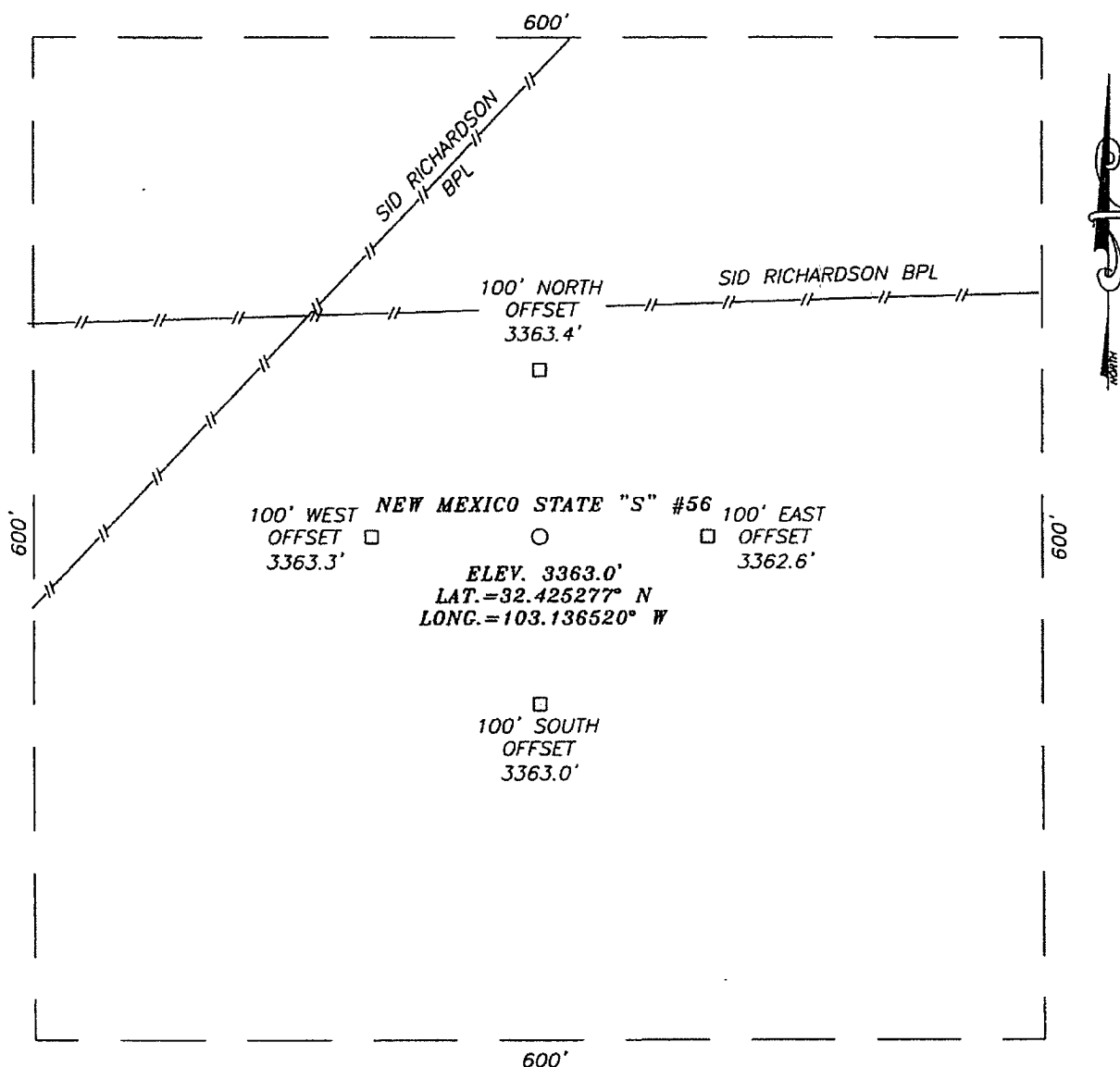
UL or lot No.	Section	Township	Range	Lot Idn	Feet from the	North/South line	Feet from the	East/West line	County
Dedicated Acres		Joint or Infill		Consolidation Code		Order No.			

NO ALLOWABLE WILL BE ASSIGNED TO THIS COMPLETION UNTIL ALL INTERESTS HAVE BEEN CONSOLIDATED
OR A NON-STANDARD UNIT HAS BEEN APPROVED BY THE DIVISION



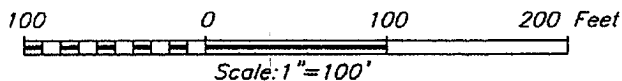
OPERATOR CERTIFICATION <i>I hereby certify that the information herein is true and complete to the best of my knowledge and belief, and that this organization either owns a working interest or unleased mineral interest in the land including the proposed bottom hole location or has a right to drill this well at this location pursuant to a contract with an owner of such mineral or working interest, or to a voluntary pooling agreement or a compulsory pooling order heretofore entered by the division.</i> <i>Lana Williams</i> Signature _____ Date <i>9/2/06</i> <i>Lana Williams</i> Printed Name _____
SURVEYOR CERTIFICATION <i>I hereby certify that the well location shown on this plat was plotted from field notes of actual surveys made by me or under my supervision, and that the same is true and correct to the best of my belief.</i> JUNE 22, 2006 Date Surveyed _____ JR Signature & Seal of Professional Surveyor _____ 06.11.1059 Certificate No. GARY EIDSON 12641 RONALD J. EIDSON 3239

SECTION 2, TOWNSHIP 22 SOUTH, RANGE 37 EAST, N.M.P.M.,
 LEA COUNTY, NEW MEXICO



DIRECTIONS TO LOCATION

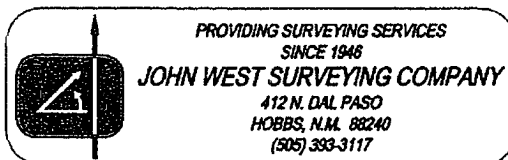
FROM THE INTERSECTION OF ST. HWY. #234 (176) AND ST. HWY. #18 GO SOUTH ON ST. HWY. #18 FOR APPROX. 0.9 MILES. TURN RIGHT AND GO WEST APPROX. 0.5 MILES. TURN RIGHT AND GO NORTH APPROX. 0.2 MILES TO THE EXISTING ST. S #14 WELL. THIS LOCATION IS APPROX. 450 FEET SOUTHWEST.



APACHE CORPORATION

NEW MEXICO STATE "S" #56 WELL
 LOCATED 990 FEET FROM THE NORTH LINE
 AND 1650 FEET FROM THE WEST LINE OF SECTION 2,
 TOWNSHIP 22 SOUTH, RANGE 37 EAST, N.M.P.M.,
 LEA COUNTY, NEW MEXICO.

Survey Date: 06/22/06	Sheet 1 of 1 Sheets
W.O. Number: 06.11.1059	Dr By: J.R.
Date: 06/28/06	Disk: CD#6
06111059	Scale: 1"=100'



VICINITY MAP



SCALE: 1" = 2 MILES

SEC. 2 TWP. 22-S RGE. 37-E

SURVEY N.M.P.M.

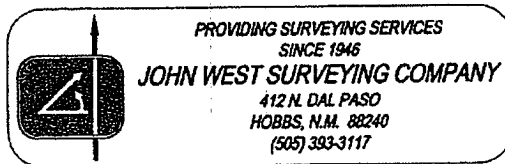
COUNTY LEA STATE NEW MEXICO

DESCRIPTION 990' FNL & 1650' FWL

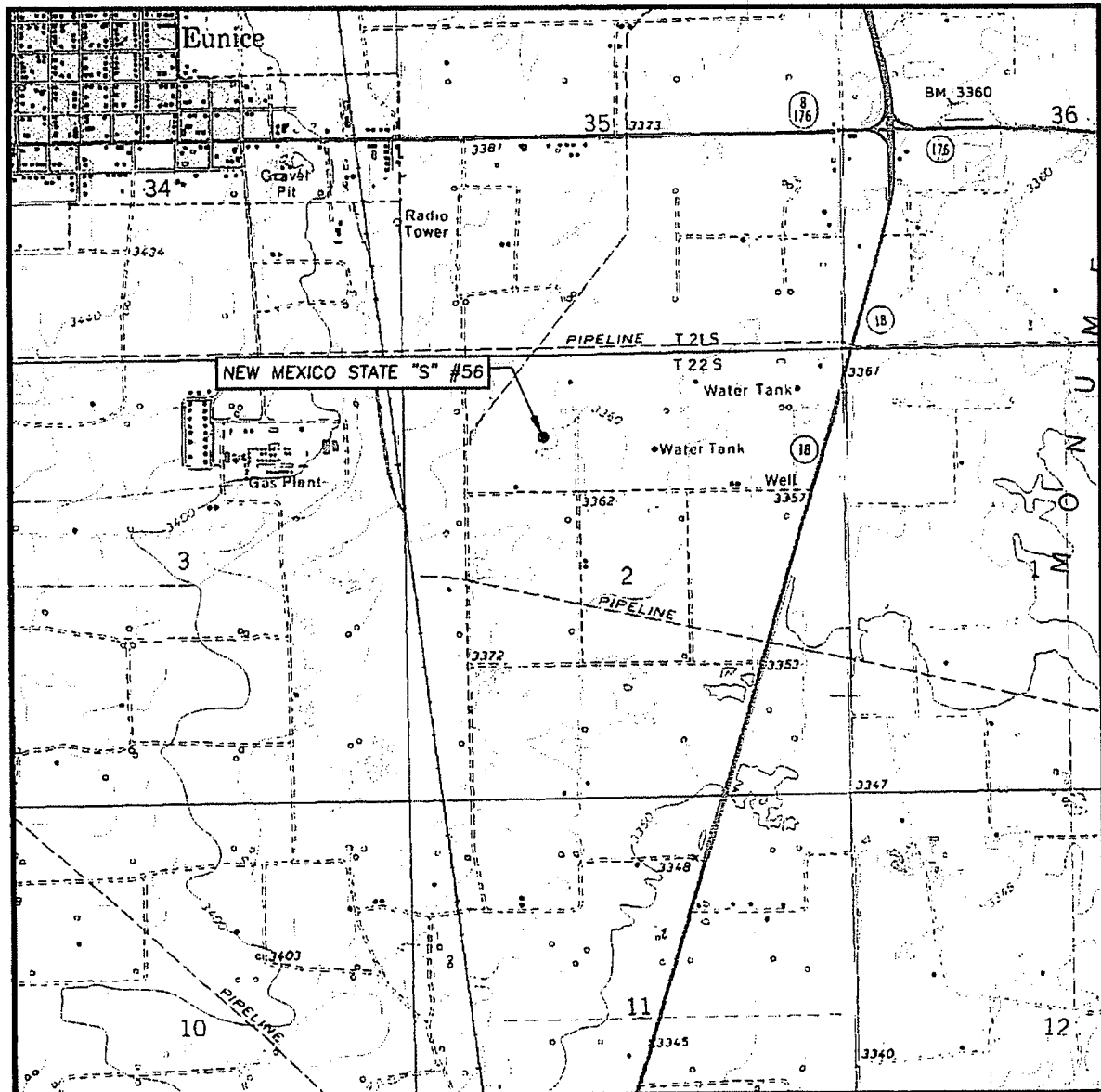
ELEVATION 3363'

OPERATOR APACHE CORPORATION

LEASE NEW MEXICO STATE "S"



LOCATION VERIFICATION MAP



SCALE: 1" = 2000'

CONTOUR INTERVAL:
EUNICE, N.M. - 10'

SEC. 2 TWP. 22-S RGE. 37-E

SURVEY _____ N.M.P.M.

COUNTY LEA STATE NEW MEXICO

DESCRIPTION 990' FNL & 1650' FWL

ELEVATION 3363'

OPERATOR APACHE CORPORATION

LEASE NEW MEXICO STATE "S"

U.S.G.S. TOPOGRAPHIC MAP

EUNICE, N.M.

