

Submit 3 Copies To Appropriate District Office
District I
1625 N. French Dr., Hobbs, NM 88240
District II
1301 W. Grand Ave., Artesia, NM 88210
District III
1000 Rio Brazos Rd., Aztec, NM 87410
District IV
1220 S. St. Francis Dr., Santa Fe, NM 87505

State of New Mexico
Energy, Minerals and Natural Resources

Form C-103
May 27, 2004

OIL CONSERVATION DIVISION
1220 South St. Francis Dr.
Santa Fe, NM 87505

WELL API NO. 30-015-34843
5. Indicate Type of Lease STATE <input checked="" type="checkbox"/> FEE <input type="checkbox"/>
6. State Oil & Gas Lease No.
7. Lease Name or Unit Agreement Name Box O Chocolates 1923-5 State Com
8. Well Number 1
9. OGRID Number
10. Pool name or Wildcat Wildcat, 96086

SUNDRY NOTICES AND REPORTS ON WELLS
(DO NOT USE THIS FORM FOR PROPOSALS TO DRILL OR TO DEEPEN OR PLUG BACK TO A DIFFERENT RESERVOIR. USE "APPLICATION FOR PERMIT" (FORM C-101) FOR SUCH PROPOSALS.)

1. Type of Well: Oil Well ☐ Gas Well ☒ Other ☐

2. Name of Operator
Parallel Petroleum Corp.

3. Address of Operator
1004 N. Big Spring, Midland, Texas 79705

4. Well Location
Unit Letter **M** : **760** feet from the **South** line and **300** feet from the **West** line
Section **5** Township **19S** Range **23E** NMPM **Eddy** County

11. Elevation (Show whether DR, RKB, RT, GR, etc.)
GR. 4055'

Pit or Below-grade Tank Application ☐ or Closure ☐

Pit type _____ Depth to Groundwater _____ Distance from nearest fresh water well _____ Distance from nearest surface water _____

Pit Liner Thickness: _____ mil Below-Grade Tank: Volume _____ bbls; Construction Material _____

12. Check Appropriate Box to Indicate Nature of Notice, Report or Other Data

NOTICE OF INTENTION TO:		SUBSEQUENT REPORT OF:	
PERFORM REMEDIAL WORK <input type="checkbox"/>	PLUG AND ABANDON <input type="checkbox"/>	REMEDIAL WORK <input type="checkbox"/>	ALTERING CASING <input type="checkbox"/>
TEMPORARILY ABANDON <input type="checkbox"/>	CHANGE PLANS <input checked="" type="checkbox"/>	COMMENCE DRILLING OPNS. <input type="checkbox"/>	P AND A <input type="checkbox"/>
PULL OR ALTER CASING <input type="checkbox"/>	MULTIPLE COMPL <input type="checkbox"/>	CASING/CEMENT JOB <input type="checkbox"/>	
OTHER: Move surface location	<input checked="" type="checkbox"/>	OTHER:	<input type="checkbox"/>

13. Describe proposed or completed operations. (Clearly state all pertinent details, and give pertinent dates, including estimated date of starting any proposed work). SEE RULE 1103. For Multiple Completions: Attach wellbore diagram of proposed completion or recompletion.

This sundry notice is to move the surface and bottom hole location of the well. A revised C-101 and C-102 and drilling plan are attached.

I hereby certify that the information above is true and complete to the best of my knowledge and belief. I further certify that any pit or below-grade tank has been/will be constructed or closed according to NMOCD guidelines ☐, a general permit ☐ or an (attached) alternative OCD-approved plan ☐.

SIGNATURE Gary Miller TITLE Agent DATE _____

Type or print name
For State Use Only **BRYAN G. ARRANT**
APPROVED BY: **DISTRICT II GEOLOGIST** TITLE _____ DATE **SEP 05 2006**
Conditions of Approval (if any): _____

District I
1625 N. French Dr., Hobbs, NM 88240
District II
1301 W. Grand Avenue, Artesia, NM 88210
District III
1000 Rio Brazos Road, Aztec, NM 87410
District IV
1220 S. St. Francis Dr., Santa Fe, NM 87505

State of New Mexico
Energy Minerals and Natural Resources

Form C-101
May 27, 2004

Oil Conservation Division
1220 South St. Francis Dr.
Santa Fe, NM 87505

Submit to appropriate District Office

☒ AMENDED REPORT

APPLICATION FOR PERMIT TO **DRILL**, **RE-ENTER**, **DEEPEN**, **PLUGBACK**, OR ADD A ZONE

Operator Name and Address Parallel Petroleum Corp. 1004 N. Big Spring Street, Suite 400, Midland, TX. 79701		OGRID Number 230387
Property Code 35688	Property Name Box O Chocolates 1923-5 State Com	API Number 30-015-34843
Proposed Pool 1 Wolfcamp 96086		Proposed Pool 2

Surface Location									
UL or lot no. M	Section 5	Township 19S	Range 23E	Lot Idn	Feet from the 760	North/South line South	Feet from the 300'	East/West line West	County Eddy

Proposed Bottom Hole Location If Different From Surface									
UL or lot no. P	Section 5	Township 19S	Range 23E	Lot Idn	Feet from the 760'	North/South line South	Feet from the 660'	East/West line East	County Eddy

Additional Well Information				
Work Type Code N	Well Type Code O & G	Cable/Rotary R	Lease Type Code P	Ground Level Elevation 4055'
Multiple No	Proposed Depth 8590MD, 4450TVD	Formation Wolfcamp	Contractor NA	Spud Date NA
Depth to Groundwater 500'		Distance from nearest fresh water well 6000'		Distance from nearest surface water 2000'
Pit: Liner: Synthetic X 12_mils thick Clay <input type="checkbox"/> Pit Volume: 25,000 bbls Drilling Method: Closed-Loop System <input type="checkbox"/> Fresh Water X Brine <input type="checkbox"/> Diesel/Oil-based <input type="checkbox"/> Gas/Air <input type="checkbox"/>				

Proposed Casing and Cement Program					
Hole Size	Casing Size	Casing weight/foot	Setting Depth	Sacks of Cement	Estimated TOC
12-1/4"	9-5/8"	36#	1500'	325	Surface
8-3/4"	5-1/2"	17#	TVD 4450'	NA	Tie back to
			MD 8588'		Surface casing

22 Describe the proposed program. If this application is to DEEPEN or PLUG BACK, give the data on the present productive zone and proposed new productive zone. Describe the blowout prevention program, if any. Use additional sheets if necessary.

Well to be Drilled as a Horizontal Wolfcamp test. The attached drilling plan will be utilized for this test and contains details on the cement and mud programs as well as the directional information. The following is a summary of this plan.

1. Prepare surface location. Move in and rig up drilling rig, spud well and drill and set conductor. Install and test BOP's.
2. Drill 12 1/4" Surface hole to a minimum depth of 1500'. Set 8 5/8" casing and cement.
3. Drill 8 3/4" production hole 5500' TD and evaluate running mud logs as well as DLL/CNL/LDT/CAL/GR to TD.
4. Set Kickoff Point at 4130' drill and advance hole to a Wolfcamp penetration point at approximately 720' FWL and 760' FNL of the section and continue drilling to BHL. (8590' MD & 4450' TVD)
5. Set 5 1/2" to TD and tie cement back to surface casing. Perforate porosity and stimulate as necessary (specific procedure to be determined).
6. Place well on test.
7. No H2S if anticipated during the drilling of this well.

23 I hereby certify that the information given above is true and complete to the best of my knowledge and belief. I further certify that the drilling pit will be constructed according to NMOCD guidelines X, a general permit ☐, or an (attached) alternative OCD-approved plan ☐

Printed name: Deane Durham

Title: Drilling Engineer

E-mail Address: ddurham@pml.com]

Date: 8-30-06

Phone: 432-684-3727

OIL CONSERVATION DIVISION

Approved by:

BRYAN G. ARANT

DISTRICT II GEOLOGIST

Approval Date:

SEP 05 2006

Expiration Date:

SEP 05 2007

Conditions of Approval Attached ☐

DISTRICT I
1625 N. French Dr., Hobbs, NM 88240

DISTRICT II
1301 W. Grand Avenue, Artesia, NM 88210

DISTRICT III
1000 Rio Brazos Rd., Aztec, NM 87410

DISTRICT IV
1220 S. St. Francis Dr., Santa Fe, NM 87505

State of New Mexico
Energy, Minerals & Natural Resources Department

OIL CONSERVATION DIVISION
1220 South St. Frances Dr.
Santa Fe, NM 87505

Form C-102
Revised October 12, 2005
Submit to Appropriate District Office
State Lease 4 Copies
Fee Lease 4 Copies
SEP 2006
RECEIVED
OCD - ARTESIA
AMENDED REPORT

WELL LOCATION AND ACREAGE DEDICATION PLAT

API Number	Pool Code	Pool Name
Property Code	Property Name BOX 0 CHOCOLATES 1923-5 STATE COM	Well Number 1
OGRID No.	Operator Name PARALLEL PETROLEUM CORPORATION	Elevation 4055'

Surface Location

UL or lot No.	Section	Township	Range	Lot Idn	Feet from the	North/South line	Feet from the	East/West line	County
M	5	19 S	23 E		760	SOUTH	300	WEST	EDDY

Bottom Hole Location If Different From Surface

UL or lot No.	Section	Township	Range	Lot Idn	Feet from the	North/South line	Feet from the	East/West line	County
P	5	19 S	23 E		760	SOUTH	660	EAST	EDDY

Dedicated Acres 320	Joint or Infill	Consolidation Code	Order No.
------------------------	-----------------	--------------------	-----------

NO ALLOWABLE WILL BE ASSIGNED TO THIS COMPLETION UNTIL ALL INTERESTS HAVE BEEN CONSOLIDATED OR A NON-STANDARD UNIT HAS BEEN APPROVED BY THE DIVISION

NOTE:

- 1) Plane Coordinates shown hereon are Transverse Mercator Grid and Conform to the "New Mexico Coordinate System", New Mexico East Zone, North American Datum of 1927. Distances shown hereon are mean horizontal surface values.

Project Area

Coordinate Table	
Description	Plane Coordinate
Box 0 Chocolates 1923-5 State Com #1	X = 380,772.0
Surface Location	Y = 612,901.0
Box 0 Chocolates 1923-5 State Com #1	X = 385,094.8
Bottom Hole Location	Y = 612,892.4

Producing Area

300' (SL) (PP-720' FUL 760' FSL)

(BHL) 660'

OPERATOR CERTIFICATION

I hereby certify the the information contained herein is true and complete to the best of my knowledge and belief, and that this organization either owns a working interest or unleased mineral interest in the land including the proposed bottom hole location or has a right to drill this well at this location pursuant to a contract with an owner of such a mineral or working interest, or to a voluntary pooling agreement or a compulsory pooling order heretofore entered by the division.

Signature Date
Deane Durham 8-29-06

Printed Name

SURVEYOR CERTIFICATION

I hereby certify that the well location shown on this plat was plotted from field notes of actual surveys made by me or under my supervision and that the same is true and correct to the best of my belief.

August 23, 2006

Date of Survey LVA
Signature & Seal of Professional Surveyor

W.O. Num. 2006-0294-1
Certificate No. MACON McDONALD 12185

PARALLEL SURVEY CALCULATION PROGRAM PETROLEUM CORPORATION

OPERATOR:	Parallel Petroleum Corporation	Supervisors:	
WELL:	Box O Chocolates 1923-5 State Com #1		
LOCATION:	Sec. 5 T-19-S R-23-E		
API NUMBER:			
COMMENTS:			
		MAG DEC. (-/+)	
		GRID CORR. (-/+)	
		TOTAL CORR. (-/+)	0.0

DATE: 08/28/06 TIME: 4:13 PM TRUE TO GRID ☐

MINIMUM CURVATURE CALCULATIONS(SPE-3382)									PROPOSED DIRECTION 90.0		TARGET TRACKING TO CENTER	
SVY	MD	INC	GRID	VERT					DLS/		ABOVE(+)	RIGHT(+)
NUM			AZM	TVD	SECT	N-S	E-W		100		BELOW(-)	LEFT(-)
TIE	0	0.0	0.0	0.0	0.0	0.0	0.0					
1	4030	0.0	0.0	4030.0	0.0	0.0	0.0	0.0		420.0	0.0	
2	4041	1.5	90.0	4041.0	0.1	0.0	0.1	13.6		409.0	0.0	
3	4052	3.0	90.0	4052.0	0.6	0.0	0.6	13.6		398.0	0.0	
4	4690	90.0	90.0	4450.2	420.2	0.0	420.2	13.6		-0.2	0.0	
5	8590	90.0	90.0	4450.2	4320.2	0.0	4320.2	0.0		-0.2	0.0	

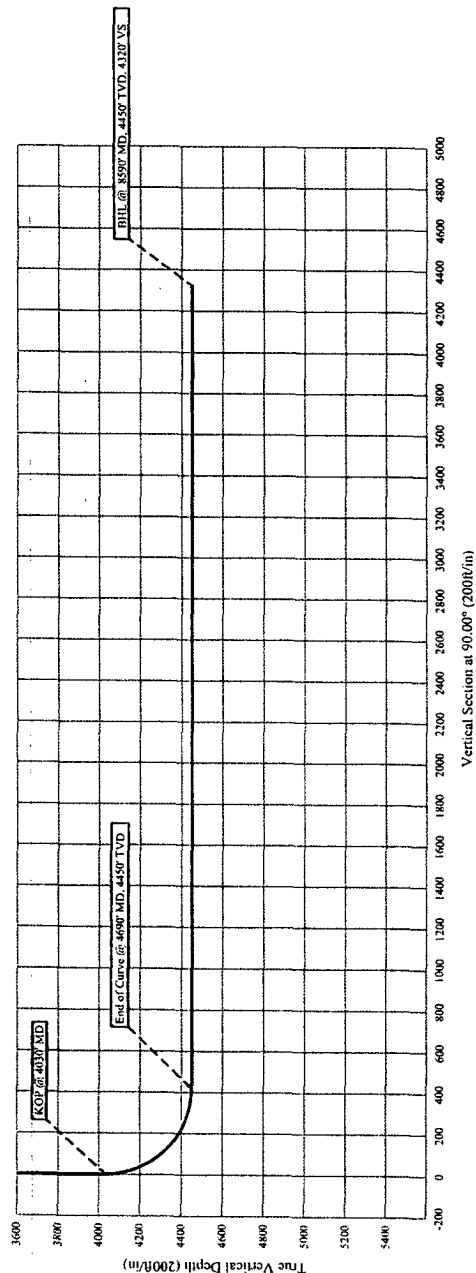
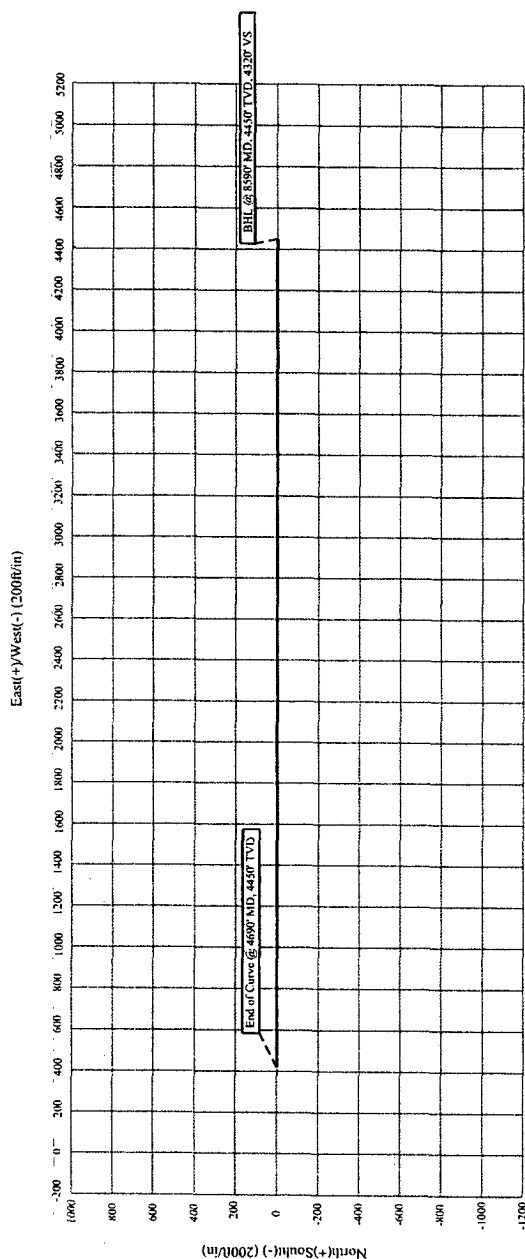
KOP @ 4030' MD
 BUR = 13.6 DEG per 100 FT
 End Curve @ 4690' MD, 4450' TVD
 BHL @ 8590' MD, 4450' TVD, 4320' VS

Parallel Petroleum Corp.

Box O Chocolates 1923-5 #1
Sec. 5, T-19-S, R-23-E
Eddy County, New Mexico

COMPANY DETAILS

Parallel Petroleum Corp.
1004 N. Big Spring, Ste 400
Midland, Texas 79701



**PARALLEL PETROLEUM CORPORATION
BOX O CHOCOLATES 1923-5 STATE COM #1
SL: 760' FSL AND 300' FWL, BHL: 760' FSL AND 660' FEL
SEC 5, T19S, R23E
EDDY COUNTY, NEW MEXICO**

Objective

Drill a vertical well through the Wolfcamp pay. Log and evaluate for a sidetrack to horizontal in the Wolfcamp.

Expected Geologic Tops

GL: 4055', KB 4067'.
Glorieta 1780'
Tubb 2790'
Abo Shale 3435'
Wolfcamp 4450'
Wolfcamp Shale 4560'

Well Geometry

- 9 5/8" casing at 1500'
- Set kick-off plug for horizontal through the zone of interest
- 5 1/2" casing through the horizontal Wolfcamp; Cement per completion.

Casing Program

<u>Hole</u>	<u>MD</u> <u>(ft)</u>	<u>Casing</u>	<u>Weight</u>	<u>Grade</u>	<u>Coupling</u>	<u>COMMENT</u>
12-1/4"	0 – 1500	9-5/8"	36	J55	ST&C	
8-3/4"	0 – TD'	5-1/2"	17	N80	LT&C	Run through the horizontal lateral.

Casing Cementing Program

9-5/8" slurry: Lead: 125 sacks (50:50) Poz (Fly Ash): Class C + 5% bwoc Sodium Chloride + 10% bwoc Bentonite + 151.7% fresh water. Tail: 200 sacks Class C + 1% bwoc Calcium Chloride + 56.3% fresh water

Note: If cement does not circulate to surface, notify OCD. A temperature survey will be required. Top out to surface with 1" pipe in the annulus.

Note: 5-1/2" Cement per completion procedure. Top of Cement should be tied back to surface casing at a minimum.

Mud Program

<u>Depth</u>	<u>Hole</u>	<u>MW</u>	<u>Visc.</u>	<u>WL</u>	<u>Synopsis</u>
0 - 1500	12-1/4"	8.4 – 8.6	28 - 29	No control	FRESH WATER mud only to 1200 ft. Severe loss potential. Circulate inner reserve. LCM: paper, fiber, cotton seed hulls.
1500 – 3400	8-3/4"	8.6 – 9.2	28 -29	No control	Cut brine. Start w/existing & add brine t/80K-120K chlorides
3400 – TD	8-3/4"	8.9 – 9.5	38 - 45	6 - 10	XCD/Starch polymer as req'd for hole cleaning. Lubricants.
KOP – TD Horizontal	8-3/4 & 7-7/8"	8.9 – 9.5	38 - 45	6 - 10	XCD/Starch polymer as req'd for hole cleaning. Lubricants.



PARALLEL

Petroleum Corporation

1004 North Big Spring, Suite 400 • Midland, TX 79701 • Ph: 432-684-3727 • Fax: 432-684-3905

November 9, 2005

Mr. Bryan Arrant
State Of New Mexico,
Oil Conservation Division
1301 W. Grand Ave.
Artesia, New Mexico 88210

Re: Hydrogen Sulfide Potential
Parallel Petroleum Corporation, Box Area wells,
T-19-S, R-21-E
Eddy County, New Mexico

Dear Mr. Arrant;

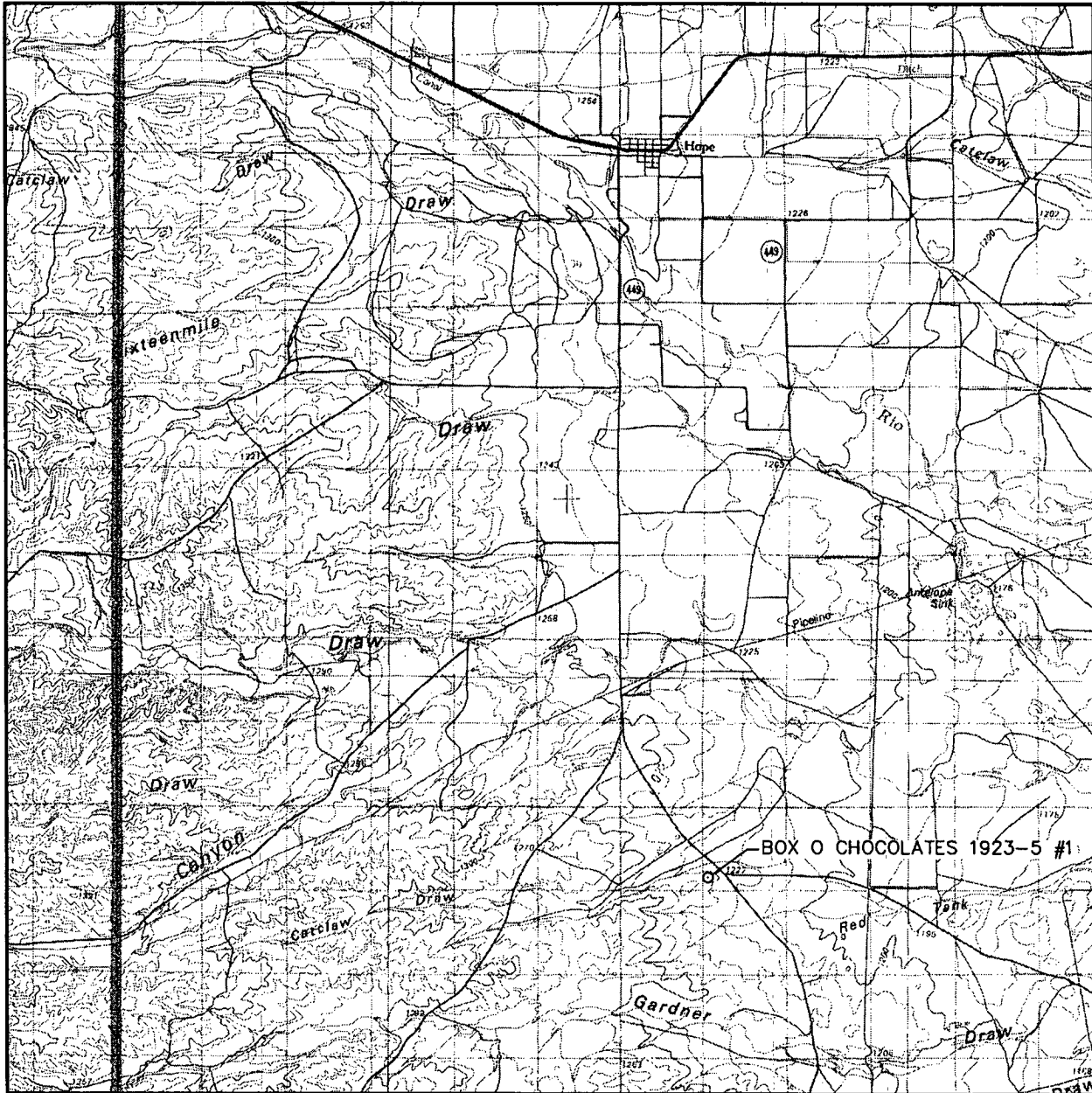
The Box Top Federal 19 21-1 #1 site which is being drilled seven miles south of Hope, New Mexico was reviewed for its potential for hydrogen sulfide. Mr. John Simitz, Geologist for the Bureau of Land Management, Roswell, New Mexico reviewed the site and stated that no potential for gas was found a Morrow test in this area. Based on this information we believe the potential H₂S at well locations in this area are negligible.

Should you need additional information regarding this issue, please contact me at the address or phone number listed above or my email address at ddurham@plll.com.

Sincerely,

Deane Durham
Engineer

VICINITY MAP



SCALE: 1" = 2 MILES

SEC. 5 TWP. 19-S RGE. 23-E

SURVEY N.M.P.M.

COUNTY EDDY

DESCRIPTION 760' FSL & 300' FWL

ELEVATION 4055'

OPERATOR PARALLEL PETROLEUM CORPORATION

LEASE BOX 0 CHOCOLATES 1923-5 STATE COM



110 W. LOUISIANA, STE. 110
MIDLAND TEXAS, 79701
(432) 687-0865 - (432) 687-0868 FAX

This topographic map depicts the Press Box area, characterized by numerous contour lines indicating elevation. Key features include:

- Section Numbers:** The map is divided into sections numbered 31, 32, 33, 4, 5, 6, 7, 8, and 9.
- Landmarks:**
 - Press Box:** Labeled as "PRESS BOX" and "1923-5 STATE COM #1".
 - Box of Chocolates:** Labeled as "BOX OF CHOCOLATES" and "1923-5 STATE COM #1".
 - Red Tank:** Located in the lower center of the map.
 - Hill Well:** Located in the upper right quadrant.
 - Draw:** A dashed line labeled "Draw" runs diagonally across the lower right.
- Elevation and Contours:** Contour lines are labeled with values such as 3950, 3970, 3985, 4000, 4023, 4025, 4026, 4029, 4042, 4050, and 4056.
- Infrastructure:**
 - Access Road:** A road labeled "1348 L.F. OF NEW ACCESS ROAD".
 - Pipeline:** A line labeled "2134 L.F. OF NEW PIPELINE".
- Other Features:**
 - BM 4025:** A benchmark point.
 - 3977:** A spot elevation.
 - 3965:** A spot elevation.
 - 3939:** A spot elevation.
 - 3970:** A spot elevation.
 - 3995:** A spot elevation.
 - 4042:** A spot elevation.
 - 4050:** A spot elevation.
 - 4023:** A spot elevation.
 - 4026:** A spot elevation.
 - 4029:** A spot elevation.
 - 4000:** A spot elevation.
 - 4056:** A spot elevation.
 - 4025:** A spot elevation.
 - 4029:** A spot elevation.
 - 4050:** A spot elevation.
 - 4056:** A spot elevation.
 - 4023:** A spot elevation.
 - 4026:** A spot elevation.
 - 4029:** A spot elevation.
 - 4000:** A spot elevation.
 - 4050:** A spot elevation.
 - 4056:** A spot elevation.
 - 4025:** A spot elevation.
 - 4029:** A spot elevation.
 - 4050:** A spot elevation.
 - 4056:** A spot elevation.
 - 4023:** A spot elevation.
 - 4026:** A spot elevation.
 - 4029:** A spot elevation.
 - 4000:** A spot elevation.
 - 4050:** A spot elevation.
 - 4056:** A spot elevation.
 - 4025:** A spot elevation.
 - 4029:** A spot elevation.
 - 4050:** A spot elevation.
 - 4056:** A spot elevation.
 - 4023:** A spot elevation.
 - 4026:** A spot elevation.
 - 4029:** A spot elevation.
 - 4000:** A spot elevation.
 - 4050:** A spot elevation.
 - 4056:** A spot elevation.
 - 4025:** A spot elevation.
 - 4029:** A spot elevation.
 - 4050:** A spot elevation.
 - 4056:** A spot elevation.
 - 4023:** A spot elevation.
 - 4026:** A spot elevation.
 - 4029:** A spot elevation.
 - 4000:** A spot elevation.
 - 4050:** A spot elevation.
 - 4056:** A spot elevation.
 - 4025:** A spot elevation.
 - 4029:** A spot elevation.
 - 4050:** A spot elevation.
 - 4056:** A spot elevation.
 - 4023:** A spot elevation.
 - 4026:** A spot elevation.
 - 4029:** A spot elevation.
 - 4000:** A spot elevation.
 - 4050:** A spot elevation.
 - 4056:** A spot elevation.
 - 4025:** A spot elevation.
 - 4029:** A spot elevation.
 - 4050:** A spot elevation.
 - 4056:** A spot elevation.
 - 4023:** A spot elevation.
 - 4026:** A spot elevation.
 - 4029:** A spot elevation.
 - 4000:** A spot elevation.
 - 4050:** A spot elevation.
 - 4056:** A spot elevation.
 - 4025:** A spot elevation.
 - 4029:** A spot elevation.
 - 4050:** A spot elevation.
 - 4056:** A spot elevation.
 - 4023:** A spot elevation.
 - 4026:** A spot elevation.
 - 4029:** A spot elevation.
 - 4000:** A spot elevation.
 - 4050:** A spot elevation.
 - 4056:** A spot elevation.
 - 4025:** A spot elevation.
 - 4029:** A spot elevation.
 - 4050:** A spot elevation.
 - 4056:** A spot elevation.
 - 4023:** A spot elevation.
 - 4026:** A spot elevation.
 - 4029:** A spot elevation.
 - 4000:** A spot elevation.
 - 4050:** A spot elevation.
 - 4056:** A spot elevation.
 - 4025:** A spot elevation.
 - 4029:** A spot elevation.
 - 4050:** A spot elevation.
 - 4056:** A spot elevation.
 - 4023:** A spot elevation.
 - 4026:** A spot elevation.
 - 4029:** A spot elevation.
 - 4000:** A spot elevation.
 - 4050:** A spot elevation.
 - 4056:** A spot elevation.
 - 4025:** A spot elevation.
 - 4029:** A spot elevation.
 - 4050:** A spot elevation.
 - 4056:** A spot elevation.
 - 4023:** A spot elevation.
 - 4026:** A spot elevation.
 - 4029:** A spot elevation.
 - 4000:** A spot elevation.
 - 4050:** A spot elevation.
 - 4056:** A spot elevation.
 - 4025:** A spot elevation.
 - 4029:** A spot elevation.
 - 4050:** A spot elevation.
 - 4056:** A spot elevation.
 - 4023:** A spot elevation.
 - 4026:** A spot elevation.
 - 4029:** A spot elevation.
 - 4000:** A spot elevation.
 - 4050:** A spot elevation.
 - 4056:** A spot elevation.
 - 4025:** A spot elevation.
 - 4029:** A spot elevation.
 - 4050:** A spot elevation.
 - 4056:** A spot elevation.
 - 4023:** A spot elevation.
 - 4026:** A spot elevation.
 - 4029:** A spot elevation.
 - 4000:** A spot elevation.
 - 4050:** A spot elevation.
 - 4056:** A spot elevation.
 - 4025:** A spot elevation.
 - 4029:** A spot elevation.
 - 4050:** A spot elevation.
 - 4056:** A spot elevation.
 - 4023:** A spot elevation.
 - 4026:** A spot elevation.
 - 4029:** A spot elevation.
 - 4000:** A spot elevation.
 - 4050:** A spot elevation.
 - 4056:** A spot elevation.
 - 4025:** A spot elevation.
 - 4029:** A spot elevation.
 - 4050:** A spot elevation.
 - 4056:** A spot elevation.
 - 4023:** A spot elevation.
 - 4026:** A spot elevation.
 - 4029:** A spot elevation.
 - 4000:** A spot elevation.
 - 4050:** A spot elevation.
 - 4056:** A spot elevation.
 - 4025:** A spot elevation.
 - 4029:** A spot elevation.
 - 4050:** A spot elevation.
 - 4056:** A spot elevation.
 - 4023:** A spot elevation.
 - 4026:** A spot elevation.
 - 4029:** A spot elevation.
 - 4000:** A spot elevation.
 - 4050:** A spot elevation.
 - 4056:** A spot elevation.
 - 4025:** A spot elevation.
 - 4029:** A spot elevation.
 - 4050:** A spot elevation.
 - 4056:** A spot elevation.
 - 4023:** A spot elevation.
 - 4026:** A spot elevation.
 - 4029:** A spot elevation.
 - 4000:** A spot elevation.
 - 4050:** A spot elevation.
 - 4056:** A spot elevation.
 - 4025:** A spot elevation.
 - 4029:** A spot elevation.
 - 4050:** A spot elevation.
 - 4056:** A spot elevation.
 - 4023:** A spot elevation.
 - 4026:** A spot elevation.
 - 4029:** A spot elevation.
 - 4000:** A spot elevation.
 - 4050:** A spot elevation.
 - 4056:** A spot elevation.
 - 4025:** A spot elevation.
 - 4029:** A spot elevation.
 - 4050:** A spot elevation.
 - 4056:** A spot elevation.
 - 4023:** A spot elevation.
 - 4026:** A spot elevation.
 - 4029:** A spot elevation.
 - 4000:** A spot elevation.
 - 4050:** A spot elevation.
 - 4056:** A spot elevation.
 - 4025:** A spot elevation.
 - 4029:** A spot elevation.
 - 4050:** A spot elevation.
 - 4056:** A spot elevation.
 - 4023:** A spot elevation.
 - 4026:** A spot elevation.
 - 4029:** A spot elevation.
 - 4000:** A spot elevation.
 - 4050:** A spot elevation.
 - 4056:** A spot elevation.

CONTOUR INTERVAL:
ANTELOPE SINK - 10'

U.S.G.S. TOPOGRAPHIC MAP
ANTELOPE SINK, N.M.



**WEST
COMPANY**
of Midland, Inc.

110 W. LOUISIANA, STE. 110
MIDLAND TEXAS, 79701
(432) 687-0865 - (432) 687-0868 FAX