

DISTRICT I
1625 N. FRANCH DR., DOBBS, NM 88240

DISTRICT II
1301 W. GRAND AVENUE, ARTESIA, NM 88210

DISTRICT III
1000 Rio Brazos Rd., Aztec, NM 87410

DISTRICT IV
1220 S. ST. FRANCIS DR., SANTA FE, NM 87505

State of New Mexico
Energy, Minerals and Natural Resources Department

OIL CONSERVATION DIVISION
1220 SOUTH ST. FRANCIS DR.
Santa Fe, New Mexico 87505

Form C-102
Revised October 12, 2005
Submit to Appropriate District Office
State Lease - 4 Copies
Fee Lease - 3 Copies

WELL LOCATION AND ACREAGE DEDICATION PLAT

☐ AMENDED REPORT

API Number 30-025-38134	Pool Code 96601 / 50350	Well Name Hare, San Andres East	Well Name Penrose Skelly GB
Property Code 23112	Property Name SOUTHLAND ROYALTY A		Well Number 26
OGRID No. 573	Operator Name APACHE CORPORATION		Elevation 3471'

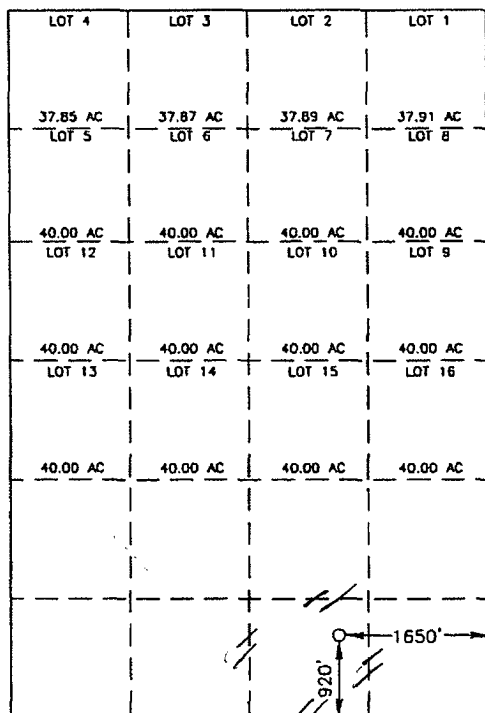
Surface Location

UL or lot No.	Section	Township	Range	Lot Idn	Feet from the	North/South line	Feet from the	East/West line	County
0	4	21-S	37-E		920	SOUTH	1650	EAST	LEA

Bottom Hole Location If Different From Surface

UL or lot No.	Section	Township	Range	Lot Idn	Feet from the	North/South line	Feet from the	East/West line	County
Dedicated Acres 40		Joint or Infill	Consolidation Code		Order No.				

NO ALLOWABLE WILL BE ASSIGNED TO THIS COMPLETION UNTIL ALL INTERESTS HAVE BEEN CONSOLIDATED
OR A NON-STANDARD UNIT HAS BEEN APPROVED BY THE DIVISION



GEODETIC COORDINATES
NAD 27 NME

Y=548713.8 N
X=860400.3 E

LAT.=32°50'30.93" N
LONG.=103°16'43.38" W

LAT.=32°30'11.14" N
LONG.=103°09'51.62" W

OPERATOR CERTIFICATION

I hereby certify that the information herein is true and complete to the best of my knowledge and belief, and that this organization either owns a working interest or unleased mineral interest in the land including the proposed bottom hole location or has a right to drill this well at this location pursuant to a contract with an owner of such mineral or working interest, or to a voluntary pooling agreement or a compulsory pooling order heretofore entered by the division.

Signature: Lana Williams
Date: 4/26/06
Printed Name: Lana Williams

SURVEYOR CERTIFICATION

I hereby certify that the well location shown on this plat was plotted from field notes of actual surveys made by me or under my supervision, and that the same is true and correct to the best of my belief.

JUNE 24, 2006

Date Surveyed: 6/11/06
Signature: Gary Eidson
Professional Surveyor

NEW MEXICO
Professional Surveyor
Gary Eidson
06.11.1078

Certificate No. GARY EIDSON 12641
RONALD L. EIDSON 3239

DISTRICT I
1625 N. FRENCH DR., ROBBIE, NM 88240

DISTRICT II
1301 W. GRAND AVENUE, ARTESIA, NM 88210

DISTRICT III
1000 Rio Brazos Rd., Aztec, NM 87410

DISTRICT IV
1220 S. ST. FRANCIS DR., SANTA FE, NM 87505

State of New Mexico
Energy, Minerals and Natural Resources Department

OIL CONSERVATION DIVISION
1220 SOUTH ST. FRANCIS DR.
Santa Fe, New Mexico 87505

Form C-102
Revised October 12, 2005
Submit to Appropriate District Office
State Lease - 4 Copies
Fee Lease - 3 Copies

WELL LOCATION AND ACREAGE DEDICATION PLAT

☐ AMENDED REPORT

API Number	Pool Code	Pool Name
Property Code	Property Name SOUTHLAND ROYALTY A	Well Number 26
OGRID No.	Operator Name APACHE CORPORATION	Elevation 3471'

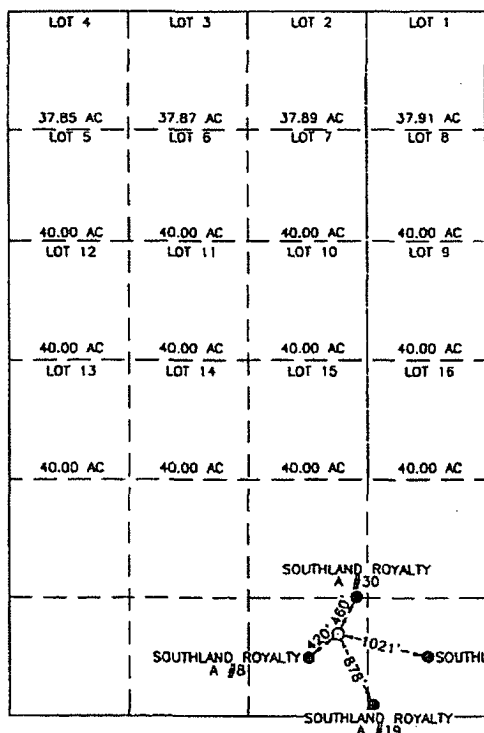
Surface Location

UL or lot No.	Section	Township	Range	Lot Idn	Feet from the	North/South line	Feet from the	East/West line	County
0	4	21-S	37-E		920	SOUTH	1650	EAST	LEA

Bottom Hole Location If Different From Surface

UL or lot No.	Section	Township	Range	Lot Idn	Feet from the	North/South line	Feet from the	East/West line	County
Dedicated Acres	Joint or Infill	Consolidation Code	Order No.						

NO ALLOWABLE WILL BE ASSIGNED TO THIS COMPLETION UNTIL ALL INTERESTS HAVE BEEN CONSOLIDATED
OR A NON-STANDARD UNIT HAS BEEN APPROVED BY THE DIVISION



GEODETIC COORDINATES
NAD 27 NME

Y=548713.8 N
X=860400.3 E

LAT.=32.503093' N
LONG.=103.164338' W

LAT.=32°30'11.14" N
LONG.=103°09'51.62" W

2000 0 2000 4000 Feet
Scale: 1"=2000'

OPERATOR CERTIFICATION

I hereby certify that the information herein is true and complete to the best of my knowledge and belief, and that this organization either owns a working interest or unleased mineral interest in the land including the proposed bottom hole location or has a right to drill this well at this location pursuant to a contract with an owner of such mineral or working interest, or to a voluntary pooling agreement or a compulsory pooling order heretofore entered by the division.

Lana Williams
Signature Date
Lana Williams 9/26/06
Printed Name

SURVEYOR CERTIFICATION

I hereby certify that the well location shown on this plat was plotted from field notes of actual surveys made by me or under my supervision, and that the same is true and correct to the best of my belief.

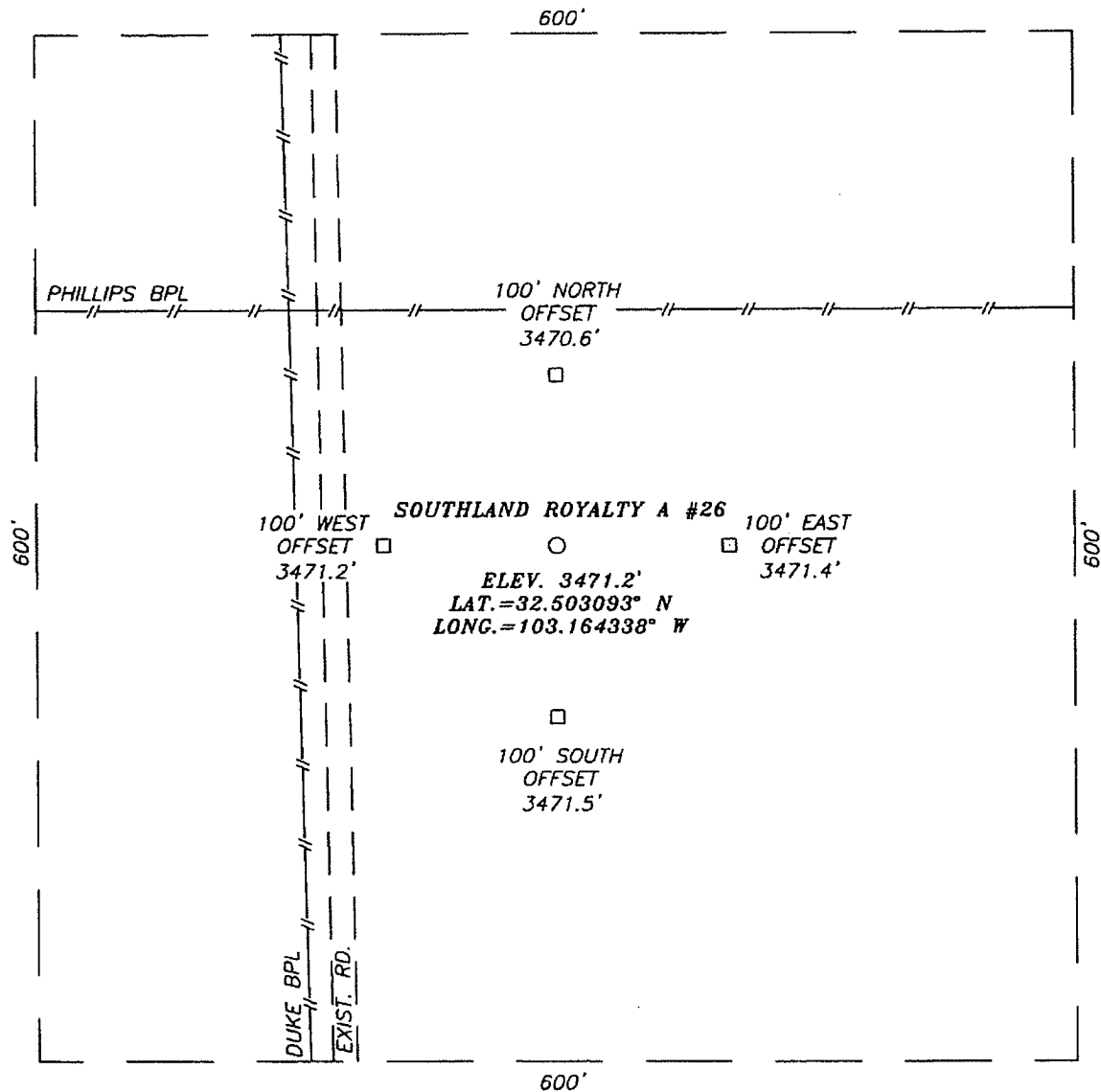
JUNE 24, 2006

Date Surveyed MR
Signature & Seal of
Professional Surveyor

06.11.1078

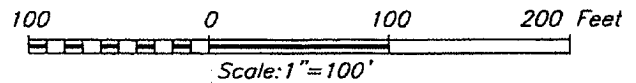
Certificate No. GARY EIDSON 12641
RONALD J. EIDSON 3239

SECTION 4, TOWNSHIP 21 SOUTH, RANGE 37 EAST, N.M.P.M.,
LEA COUNTY, NEW MEXICO



DIRECTIONS TO LOCATION

FROM THE INTERSECTION OF ST. HWY. #207 AND CO. RD. E-34 (DECK RD.), GO WEST ON DECK RD. APPROX. 0.4 MILES. TURN RIGHT AND GO NORTH APPROX. 0.5 MILES. TURN RIGHT AND GO EAST APPROX. 200 FEET. TURN LEFT AND GO NORTH APPROX. 400 FEET. THIS LOCATION IS APPROX. 130 FEET EAST.



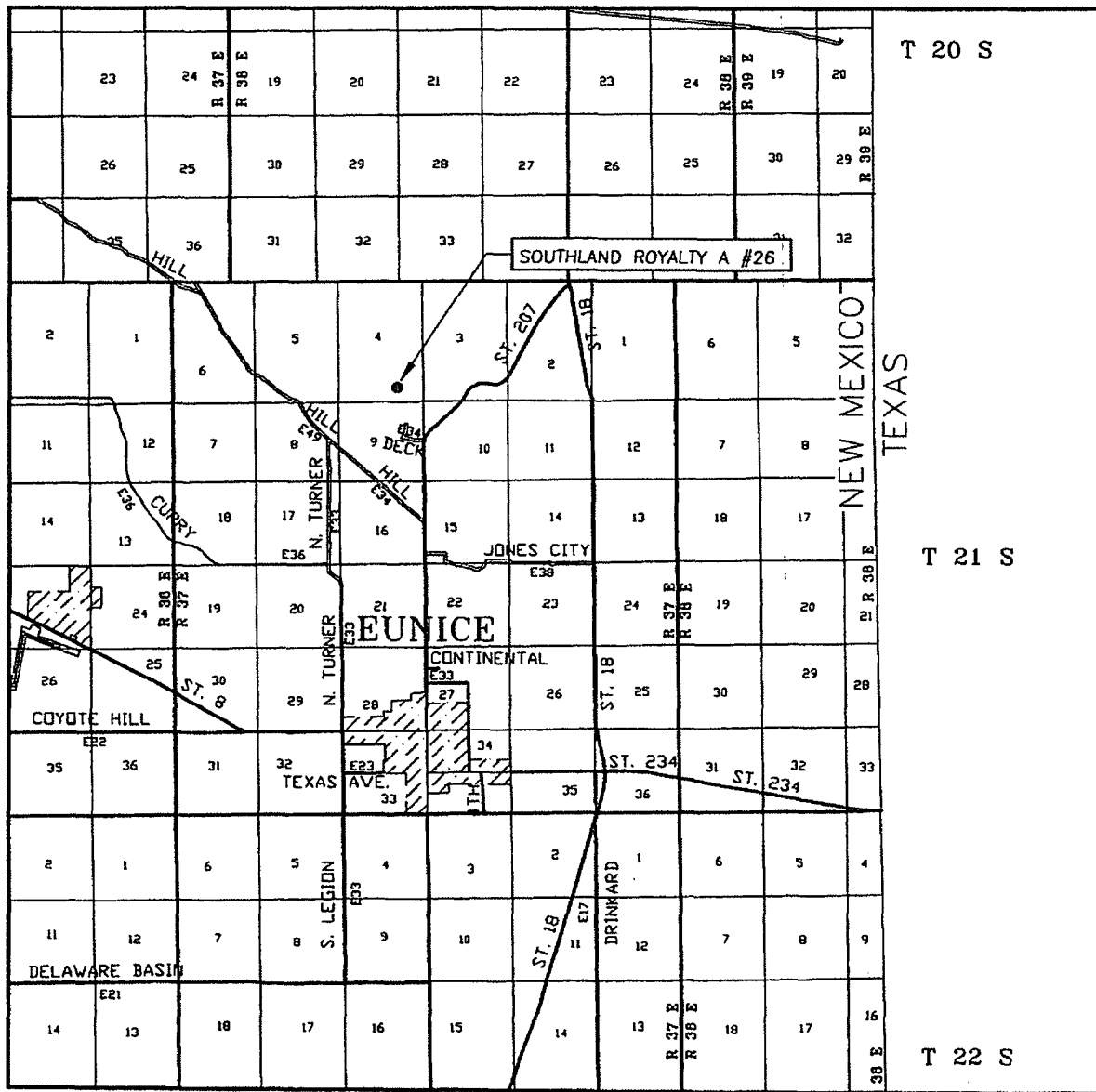
APACHE CORPORATION

SOUTHLAND ROYALTY A #26
LOCATED 920 FEET FROM THE SOUTH LINE
AND 1650 FEET FROM THE EAST LINE OF SECTION 4,
TOWNSHIP 21 SOUTH, RANGE 37 EAST, N.M.P.M.,
LEA COUNTY, NEW MEXICO.

Survey Date: 06/24/06	Sheet 1 of 1 Sheets
W.O. Number: 06.11.107B	Dr By: M.R. Rev 1:N/A
Date: 06/29/06	Disk: CD#6 06111078 Scale: 1"=100'

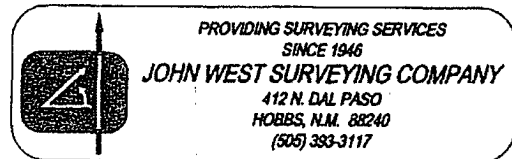
PROVIDING SURVEYING SERVICES
SINCE 1946
JOHN WEST SURVEYING COMPANY
412 N. DAL PASO
HOBBS, N.M. 88240
(505) 393-3117

VICINITY MAP

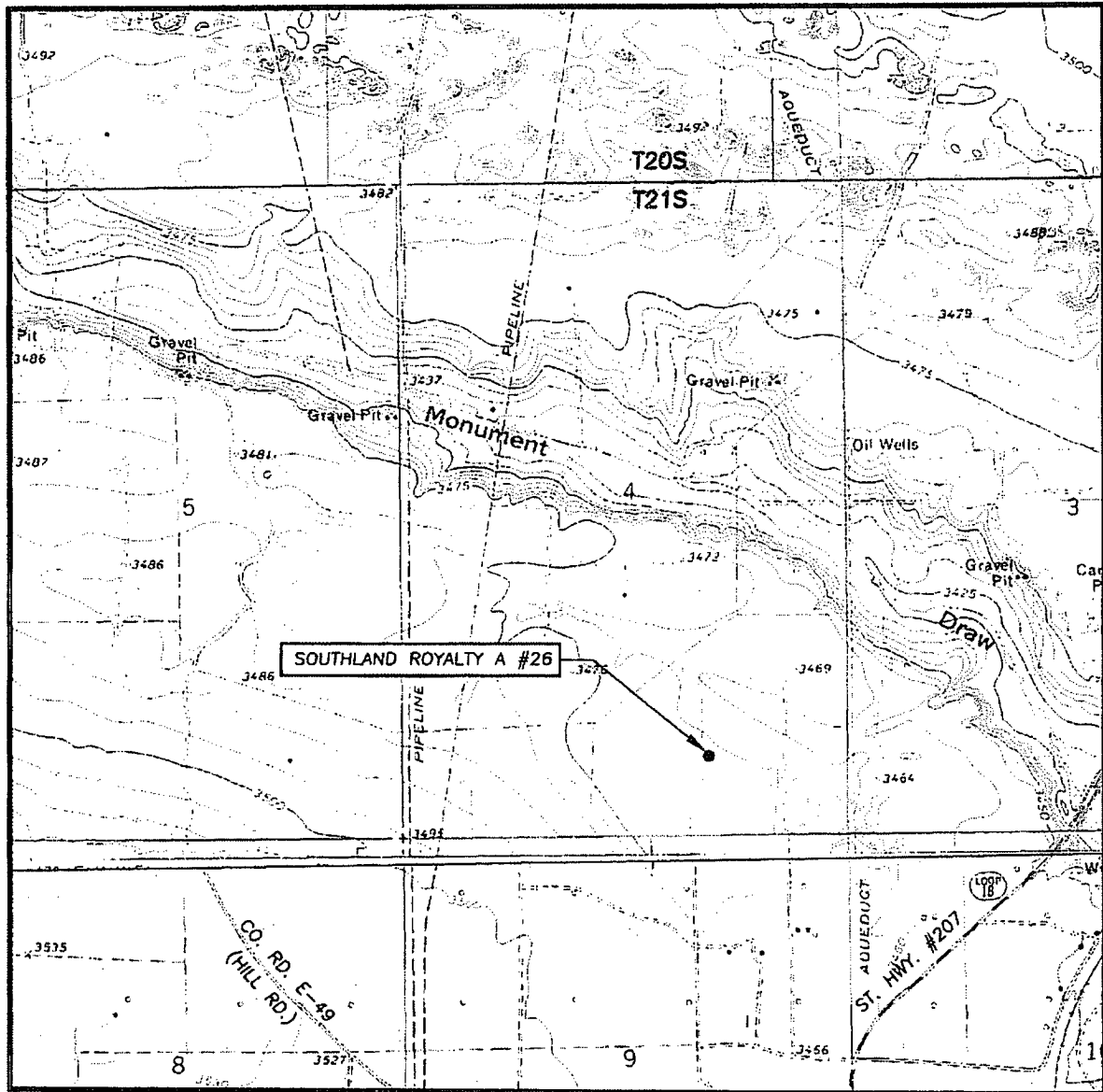


SCALE: 1" = 2 MILES

SEC. 4 TWP. 21-S RGE. 37-E
 SURVEY N.M.P.M.
 COUNTY LEA STATE NEW MEXICO
 DESCRIPTION 920' FSL & 1650' FEL
 ELEVATION 3471'
 OPERATOR APACHE CORPORATION
 LEASE SOUTHLAND ROYALTY A



LOCATION VERIFICATION MAP



SCALE: 1" = 2000'

SEC. 4 TWP. 21-S RGE. 37-E

SURVEY _____ N.M.P.M.

COUNTY LEA STATE NEW MEXICO

DESCRIPTION 920' FSL & 1650' FEL

ELEVATION 3471'

OPERATOR APACHE CORPORATION

LEASE SOUTHLAND ROYALTY A

U.S.G.S. TOPOGRAPHIC MAP
HOBBS SW, N.M.

CONTOUR INTERVAL:
HOBBS SW, N.M. - 5'
EUNICE, N.M. - 10'

