

DISTRICT 1  
1825 N. French Dr., Hobbs, NM 88240

DISTRICT II  
1301 W. Grand Ave., Artesia, NM 88210

DISTRICT III  
1000 Rio Brazos Rd., Aztec, NM 87410

DISTRICT IV  
1220 St. Francis Dr., Santa Fe, NM 87505

State of New Mexico  
Energy, Minerals and Natural Resources Department

OIL CONSERVATION DIVISION  
1220 South St. Francis Drive  
Santa Fe, NM 87505

Form C-102  
Revised October 12, 2005

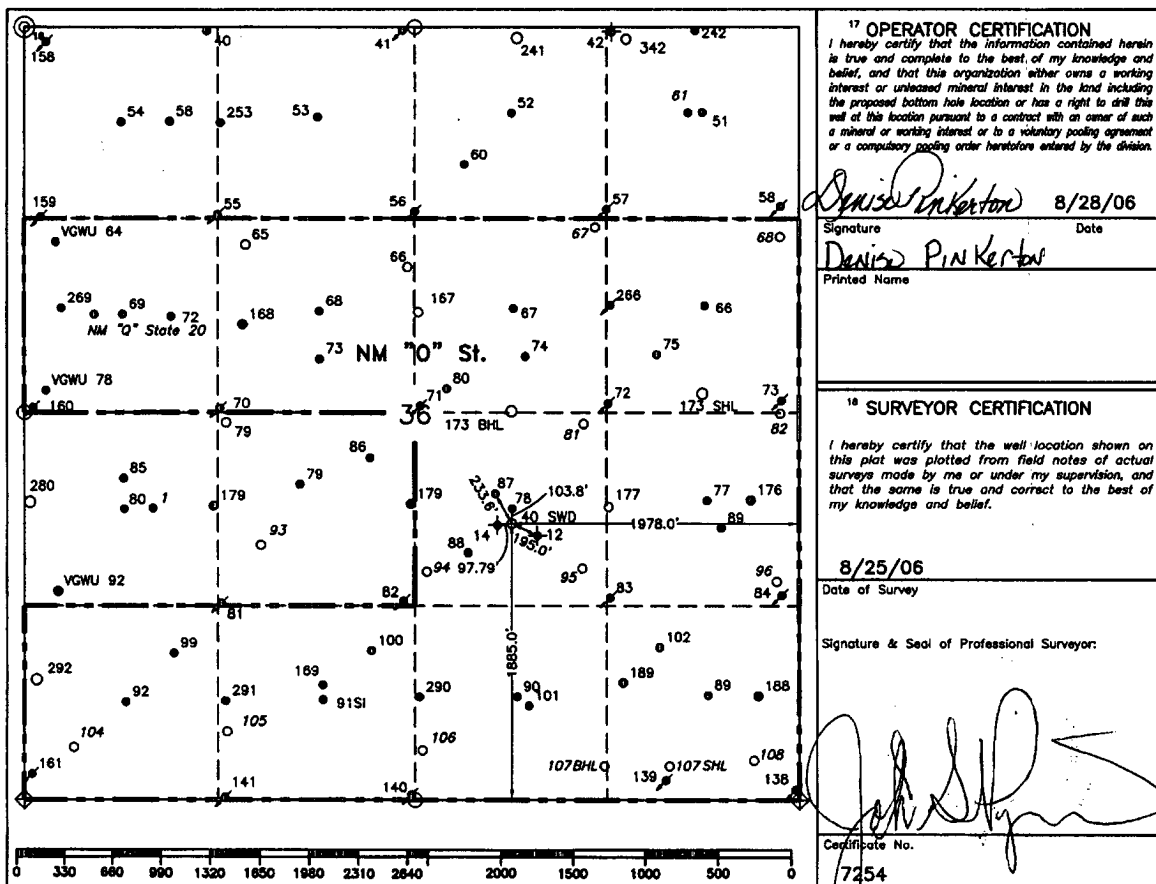
Submit to Appropriate District Office  
State Lease-4 copies  
Fee Lease-3 copies

☐ AMENDED REPORT

WELL LOCATION AND ACREAGE DEDICATION PLAT

1 API Number 30-025-38140		2 Pool Code 96101		3 Pool Name SWD DEVONIAN					
4 Property Code 29984		5 Property Name New Mexico "O" State NCT-1				6 Well Number 40			
7 GRID No. 4323		8 Operator Name CHEVRON				9 Elevation 3394'			
10 Surface Location									
UL or lot no. J	Section 36	Township 17-S	Range 34-E	Lot Idn	Feet from the 1885'	North/South line South	Feet from the 1978'	East/West line East	County Lea
11 Bottom Hole Location If Different From Surface									
UL or lot no.	Section	Township	Range	Lot Idn	Feet from the	North/South line	Feet from the	East/West line	County
12 Dedicated Acres 10		13 Joint or Infill		14 Consolidation Code		15 Order No.			

NO ALLOWABLE WILL BE ASSIGNED TO THIS COMPLETION UNTIL ALL INTERESTS HAVE BEEN CONSOLIDATED  
OR A NON-STANDARD UNIT HAS BEEN APPROVED BY THE DIVISION.



17 OPERATOR CERTIFICATION

I hereby certify that the information contained herein is true and complete to the best of my knowledge and belief, and that this organization either owns a working interest or undivided mineral interest in the land including the proposed bottom hole location or has a right to drill this well at this location pursuant to a contract with an owner of such a mineral or working interest or to a voluntary pooling agreement or a compulsory pooling order heretofore entered by the division.

Signature: *Denise Pinkerton* Date: 8/28/06

Printed Name: DENISE PINKERTON

18 SURVEYOR CERTIFICATION

I hereby certify that the well location shown on this plat was plotted from field notes of actual surveys made by me or under my supervision, and that the same is true and correct to the best of my knowledge and belief.

Date of Survey: 8/25/06

Signature & Seal of Professional Surveyor:

Certificate No. 7254

○ = Staked Location ● = Producing Well ● = Injection Well ○ = Water Supply Well ◆ = Plugged & Abandon Well  
⊙ = Found Section Corner, 2 or 3" Iron Pipe & GLO B.C. ○ = Found 1/4 Section Corner, 1" Iron Pipe & GLO B.C.

ADDITIONAL INFORMATION ON THE LOCATION

State Plane Coordinates			
Northing 651907.44		Easting 793784.86	
Latitude 32°47'21.952"		Longitude 103°30'42.664"	
Zone	North American Datum	Combined Grid Factor	Coordinate File
East	1983	0.999982072	Buckeye.Crd
Drawing File		Field Book	
NMOst-40SWD.Dwg		Lea #23, Pg. 68	