

OK

DISTRICT I
1625 N. FRENCH DR., HOBBS, NM 88240

State of New Mexico
Energy, Minerals and Natural Resources Department

DISTRICT II
1301 W. GRAND AVENUE, ARTESIA, NM 88210

OIL CONSERVATION DIVISION
1220 SOUTH ST. FRANCIS DR.
Santa Fe, New Mexico 87505

Form C-102
Revised October 12, 2005
Submit to Appropriate District Office
State Lease - 4 Copies
Fee Lease - 3 Copies

DISTRICT III
1000 Rio Brazos Rd., Aztec, NM 87410

DISTRICT IV
1220 S. ST. FRANCIS DR., SANTA FE, NM 87505

WELL LOCATION AND ACREAGE DEDICATION PLAT

☐ AMENDED REPORT

API Number 30-025-38141	Pool Code 23000	Pool Name Enrique Monument GB-SA
Property Code 302708	Property Name NMGSA UNIT	Well Number 350
OGRID No. 823	Operator Name APACHE CORPORATION	Elevation 3689'

Surface Location

UL or lot No.	Section	Township	Range	Lot Idn	Feet from the	North/South line	Feet from the	East/West line	County
C	19	19-S	37-E		190	NORTH	1350	WEST	LEA

Bottom Hole Location If Different From Surface

UL or lot No.	Section	Township	Range	Lot Idn	Feet from the	North/South line	Feet from the	East/West line	County
Dedicated Acres 40		Joint or Infill	Consolidation Code		Order No.				

NO ALLOWABLE WILL BE ASSIGNED TO THIS COMPLETION UNTIL ALL INTERESTS HAVE BEEN CONSOLIDATED
OR A NON-STANDARD UNIT HAS BEEN APPROVED BY THE DIVISION

<p>LOT 1 1350'</p> <p>LOT 2</p> <p>LOT 3</p> <p>LOT 4</p> <p>GEODETTIC COORDINATES NAD 27 NME Y=602678.6 N X=819805.8 E LAT.=32.652564° N LONG.=103.294282° W</p>	<p>OPERATOR CERTIFICATION</p> <p>I hereby certify that the information herein is true and complete to the best of my knowledge and belief, and that this organization either owns a working interest or unleased mineral interest in the land including the proposed bottom hole location or has a right to drill this well at this location pursuant to a contract with an owner of such mineral or working interest, or to a voluntary pooling agreement or a compulsory pooling order heretofore entered by the division.</p> <p><i>Lana Williams</i> 9/12/06 Signature Date Lana Williams Printed Name</p>
	<p>SURVEYOR CERTIFICATION</p> <p>I hereby certify that the well location shown on this plat was plotted from field notes of actual surveys made by me or under my supervision, and that the same is true and correct to the best of my belief.</p> <p>SEPTEMBER 05, 2006</p> <p>Date Surveyed MR Signature & Seal of Professional Surveyor <i>GARY EIDSON</i> NEW MEXICO 06-11-1415 Certificate No. GARY EIDSON 12841</p>

DISTRICT I
1625 N. FRENCH DR., HORDS, NM 88240

DISTRICT II
1301 W. GRAND AVENUE, ARTESIA, NM 88210

DISTRICT III
1000 Rio Brazos Rd., Aztec, NM 87410

DISTRICT IV
1220 S. ST. FRANCIS DR., SANTA FE, NM 87505

State of New Mexico

Energy, Minerals and Natural Resources Department

OIL CONSERVATION DIVISION
1220 SOUTH ST. FRANCIS DR.
Santa Fe, New Mexico 87505

Form C-102
Revised October 12, 2005
Submit to Appropriate District Office
State Lease - 4 Copies
Fee Lease - 3 Copies

WELL LOCATION AND ACREAGE DEDICATION PLAT

☐ AMENDED REPORT

API Number	Pool Code	Pool Name
Property Code	Property Name NMGSA UNIT	Well Number 350
OGRID No.	Operator Name APACHE CORPORATION	Elevation 3689'

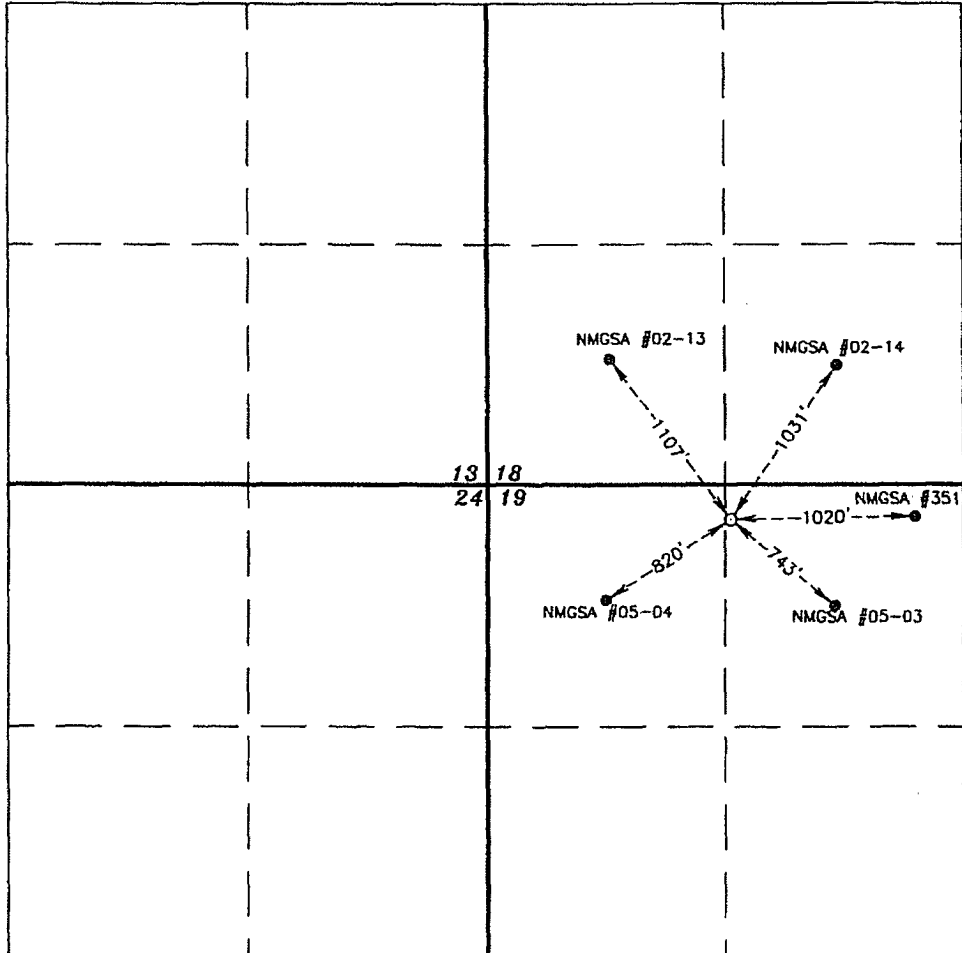
Surface Location

UL or lot No.	Section	Township	Range	Lot Idn	Feet from the	North/South line	Feet from the	East/West line	County
C	19	19-S	37-E		190	NORTH	1350	WEST	LEA

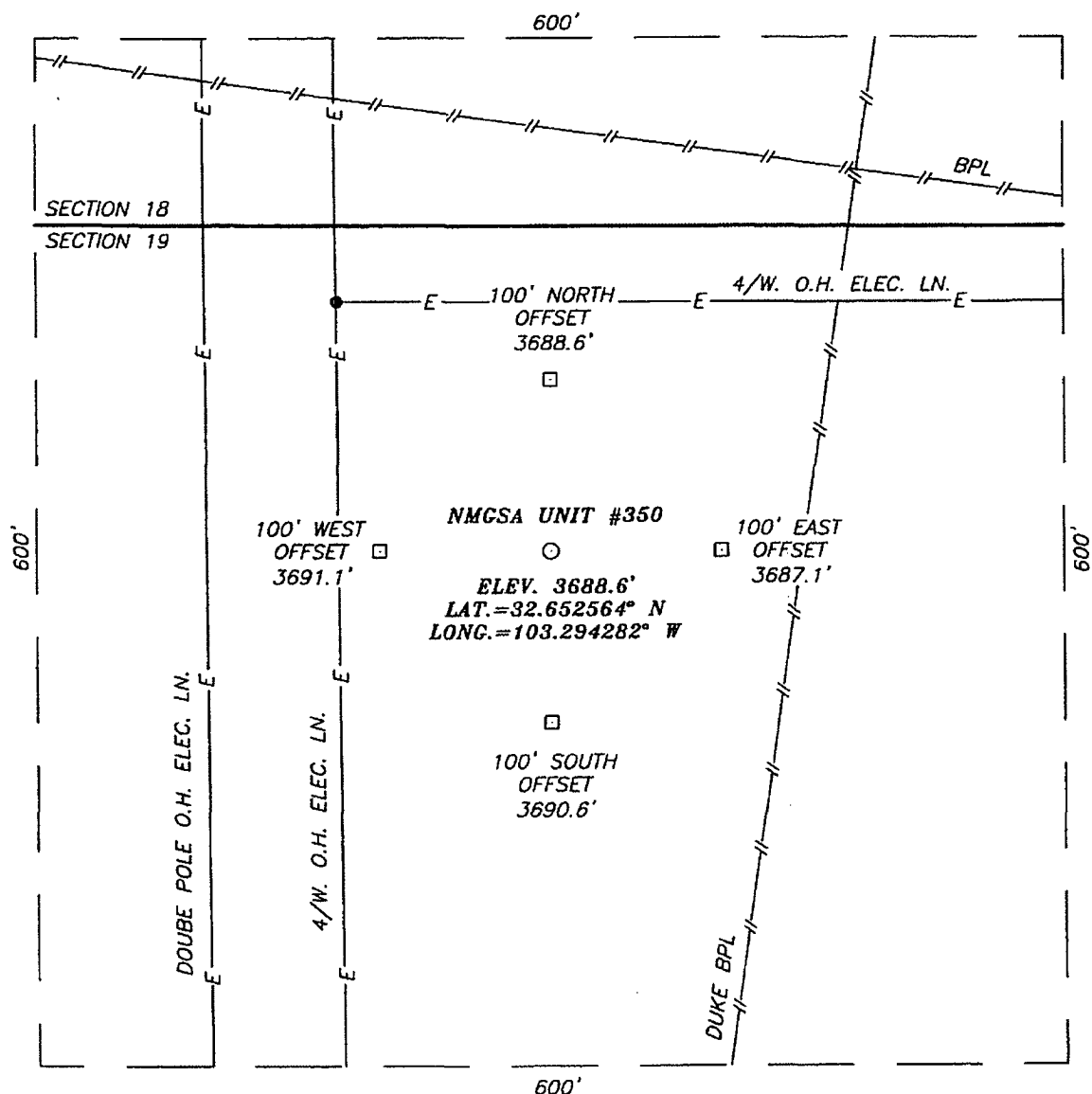
Bottom Hole Location If Different From Surface

UL or lot No.	Section	Township	Range	Lot Idn	Feet from the	North/South line	Feet from the	East/West line	County
Dedicated Acres	Joint or Infill	Consolidation Code	Order No.						

NO ALLOWABLE WILL BE ASSIGNED TO THIS COMPLETION UNTIL ALL INTERESTS HAVE BEEN CONSOLIDATED
OR A NON-STANDARD UNIT HAS BEEN APPROVED BY THE DIVISION

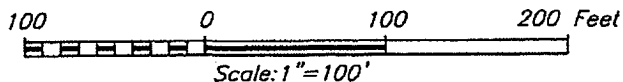
	OPERATOR CERTIFICATION <i>I hereby certify that the information herein is true and complete to the best of my knowledge and belief, and that this organization either owns a working interest or unleased mineral interest in the land including the proposed bottom hole location or has a right to drill this well at this location pursuant to a contract with an owner of such mineral or working interest, or to a voluntary pooling agreement or a compulsory pooling order heretofore entered by the division.</i> Lana Williams 9/28/06 Signature Date Lana Williams Printed Name
	SURVEYOR CERTIFICATION <i>I hereby certify that the well location shown on this plat was plotted from field notes of actual surveys made by me or under my supervision, and that the same is true and correct to the best of my belief.</i> SEPTEMBER 05, 2006 Date Surveyed MR Signature & Seal of Professional Surveyor
	06.11.1415
	Certificate No. GARY EIDSON 12841

SECTION 19, TOWNSHIP 19 SOUTH, RANGE 37 EAST, N.M.P.M.,
LEA COUNTY, NEW MEXICO



DIRECTIONS TO LOCATION

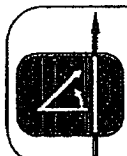
FROM CO. RD. H-41 (MADDOX RD.) AND ST. HWY. #322, GO NORTH ON CO. RD. H-41 APPROX. 2.2 MILES. TURN RIGHT AND GO EAST APPROX. 0.1 MILE. TURN RIGHT AND GO SOUTH APPROX. 0.1 MILE. THIS LOCATION IS APPROX. 650 FEET SOUTHEAST.



APACHE CORPORATION

NMGSA UNIT #350
LOCATED 190 FEET FROM THE NORTH LINE
AND 1350 FEET FROM THE WEST LINE OF SECTION 19,
TOWNSHIP 19 SOUTH, RANGE 37 EAST, N.M.P.M.,
LEA COUNTY, NEW MEXICO.

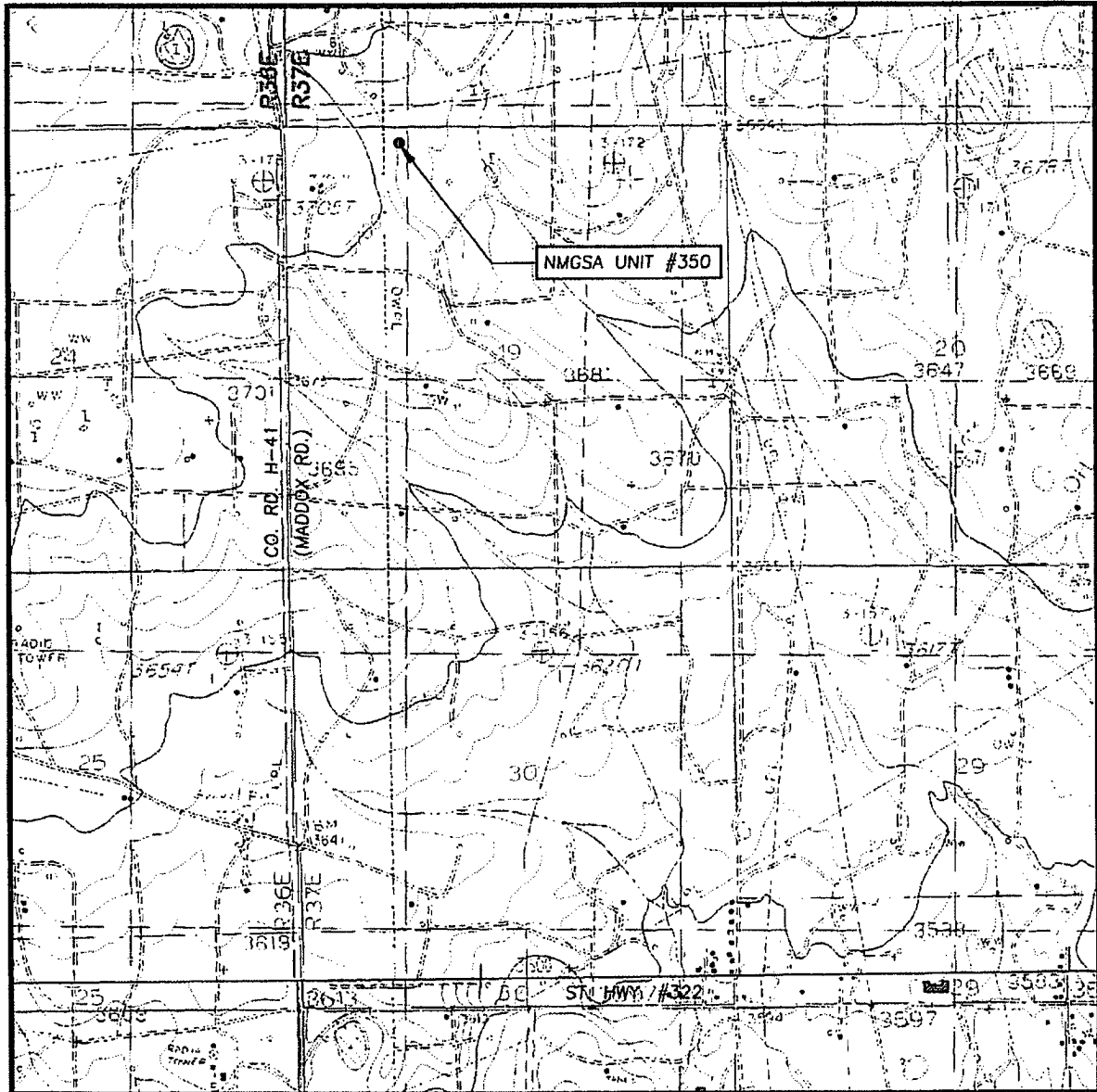
Survey Date: 09/05/06	Sheet 1 of 1 Sheets
W.O. Number: 06.11.1415	Dr By: M.R.
Date: 09/11/06	Rev 1:N/A
Disk: CD#6	06111415
	Scale: 1"=100'



PROVIDING SURVEYING SERVICES
SINCE 1946
JOHN WEST SURVEYING COMPANY
412 N. DAL PASO
HOBBS, N.M. 88240
(505) 393-3117



LOCATION VERIFICATION MAP



SCALE: 1" = 2000'

CONTOUR INTERVAL:
ILLINOIS NORTH, N.M. - 10'

SEC. 19 TWP. 19-S RGE. 37-E

SURVEY N.M.P.M.

COUNTY LEA STATE NEW MEXICO

DESCRIPTION 190' FNL & 1350' FWL

ELEVATION 3689'

OPERATOR APACHE CORPORATION

LEASE NMGSA UNIT

U.S.G.S. TOPOGRAPHIC MAP
MONUMENT NORTH, N.M.

