

DISTRICT I
1025 N. FRENCH DR., HOBBS, NM 88240

DISTRICT II
1301 W. GRAND AVENUE, ARTESIA, NM 88210

DISTRICT III
1000 Rio Brazos Rd., Aztec, NM 87410

DISTRICT IV
1220 S. ST. FRANCIS DR., SANTA FE, NM 87505

State of New Mexico
Energy, Minerals and Natural Resources Department

OIL CONSERVATION DIVISION
1220 SOUTH ST. FRANCIS DR.
Santa Fe, New Mexico 87505

Form C-102
Revised October 12, 2005
Submit to Appropriate District Office
State Lease - 4 Copies
Fee Lease - 3 Copies

WELL LOCATION AND ACREAGE DEDICATION PLAT

☐ AMENDED REPORT

API Number 30-025-38142	Pool Code 23000	Pool Name Enrichment GB/SA
Property Code 302108	Property Name NMGSA UNIT	Well Number 348
OGRID No. 873	Operator Name APACHE CORPORATION	Elevation 3695'

Surface Location

UL or lot No.	Section	Township	Range	Lot Idn	Feet from the	North/South line	Feet from the	East/West line	County
N	18	19-S	37-E		1310	SOUTH	1460	WEST	LEA

Bottom Hole Location If Different From Surface

UL or lot No.	Section	Township	Range	Lot Idn	Feet from the	North/South line	Feet from the	East/West line	County

Dedicated Acres	Joint or Infill	Consolidation Code	Order No.
40			

NO ALLOWABLE WILL BE ASSIGNED TO THIS COMPLETION UNTIL ALL INTERESTS HAVE BEEN CONSOLIDATED
OR A NON-STANDARD UNIT HAS BEEN APPROVED BY THE DIVISION

<div>LOT 1</div> <div>LOT 2</div> <div>LOT 3</div> <div>LOT 4</div> <div>1460'</div> <div>1310'</div> <div>GEODETIC COORDINATES NAD 27 NME Y=604178.1 N X=819900.7 E LAT.=32°39'24.06" N LONG.=103°17'38.13" W</div>	OPERATOR CERTIFICATION <p>I hereby certify that the information herein is true and complete to the best of my knowledge and belief, and that this organization either owns a working interest or unleased mineral interest in the land including the proposed bottom hole location or has a right to drill this well at this location pursuant to a contract with an owner of such mineral or working interest, or to a voluntary pooling agreement or a compulsory pooling order heretofore entered by the division.</p> <p><u>Lana Williams</u> Signature Date <u>Lana Williams 9/17/06</u> Printed Name</p>
	SURVEYOR CERTIFICATION <p>I hereby certify that the well location shown on this plat was plotted from field notes of actual surveys made by me or under my supervision, and that the same is true and correct to the best of my belief.</p> <p>MAY 09, 2006</p> <p>Date Surveyed MR</p> <p>Signature & Seal of Professional Surveyor <u>Ronald J. Eidson 5/16/06</u> 06.11.0759</p> <p>Certificate No. GARY EIDSON 12641 RONALD J. EIDSON 3239</p>

DISTRICT I
1625 N. FRENCH DR., HOBBS, NM 88240

DISTRICT II
1301 W. GRAND AVENUE, ARTESIA, NM 88210

DISTRICT III
1000 Rio Brazos Rd., Aztec, NM 87410

DISTRICT IV
1220 S. ST. FRANCIS DR., SANTA FE, NM 87505

State of New Mexico
Energy, Minerals and Natural Resources Department

OIL CONSERVATION DIVISION
1220 SOUTH ST. FRANCIS DR.
Santa Fe, New Mexico 87505

Form C-102
Revised October 12, 2005
Submit to Appropriate District Office
State Lease - 4 Copies
Fee Lease - 3 Copies

WELL LOCATION AND ACREAGE DEDICATION PLAT

☐ AMENDED REPORT

API Number	Pool Code	Pool Name
Property Code	Property Name NMGSA UNIT	Well Number 348
OGRID No.	Operator Name APACHE CORPORATION	Elevation 3695'

Surface Location

UL or lot No.	Section	Township	Range	Lot Idn	Feet from the	North/South line	Feet from the	East/West line	County
N	18	19-S	37-E		1310	SOUTH	1460	WEST	LEA

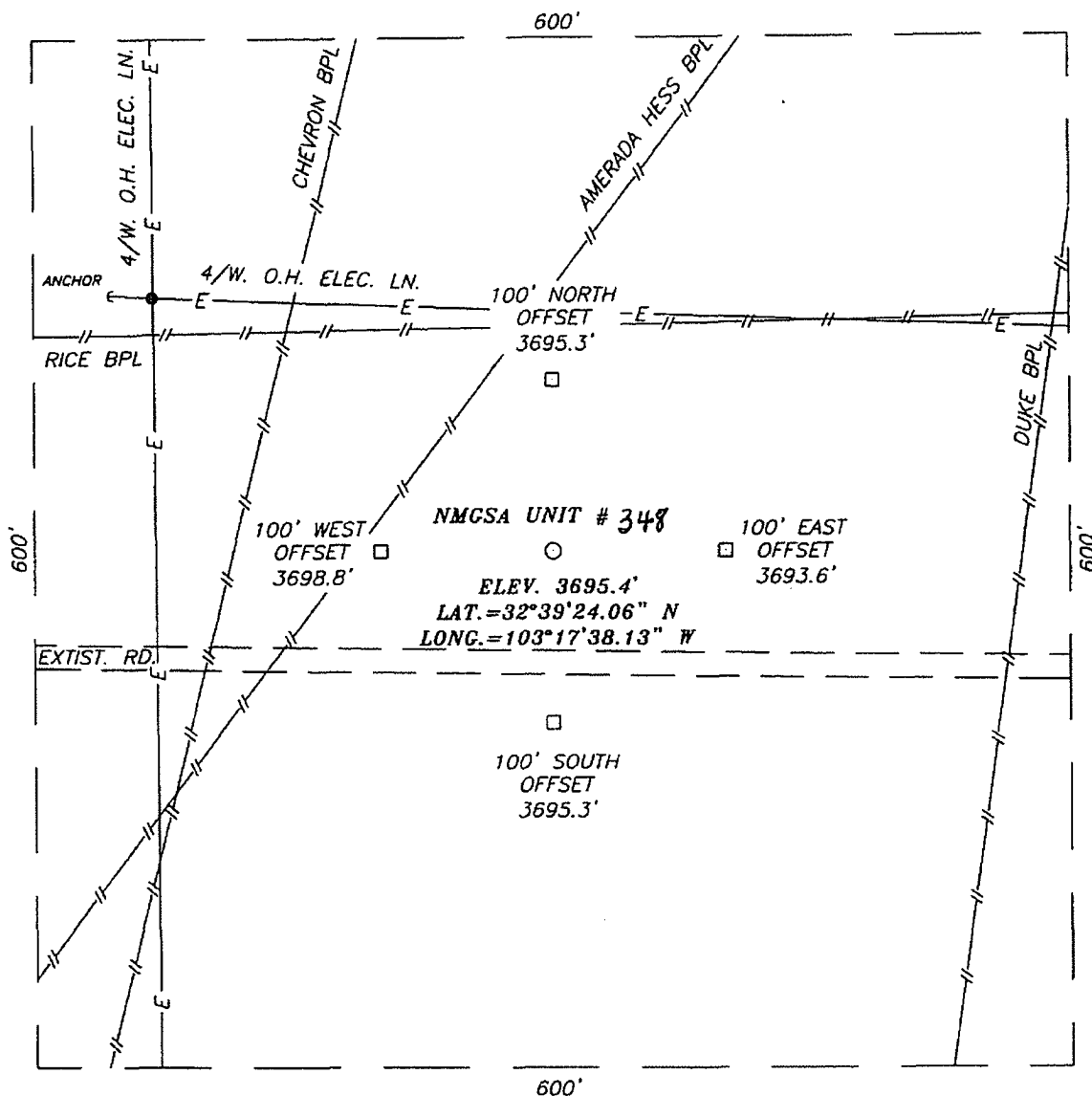
Bottom Hole Location If Different From Surface

UL or lot No.	Section	Township	Range	Lot Idn	Feet from the	North/South line	Feet from the	East/West line	County
Dedicated Acres	Joint or Infill	Consolidation Code	Order No.						

NO ALLOWABLE WILL BE ASSIGNED TO THIS COMPLETION UNTIL ALL INTERESTS HAVE BEEN CONSOLIDATED
OR A NON-STANDARD UNIT HAS BEEN APPROVED BY THE DIVISION

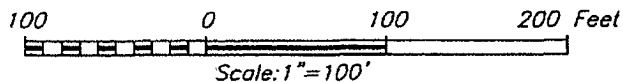
	OPERATOR CERTIFICATION <i>I hereby certify that the information herein is true and complete to the best of my knowledge and belief, and that this organization either owns a working interest or unleased mineral interest in the land including the proposed bottom hole location or has a right to drill this well at this location pursuant to a contract with an owner of such mineral or working interest, or to a voluntary pooling agreement or a compulsory pooling order heretofore entered by the division.</i> Signature: <u>Lana Williams</u> Date: <u>9/27/06</u> Printed Name: <u>Lana Williams</u>
	SURVEYOR CERTIFICATION <i>I hereby certify that the well location shown on this plat was plotted from field notes of actual surveys made by me or under my supervision, and that the same is true and correct to the best of my belief.</i> MAY 09, 2006 Date Surveyed: _____ MR Signature & Seal of Professional Surveyor: _____
	06.11.0759
	Certificate No. GARY EIDSON 12641 RONALD J. EIDSON 3239

SECTION 18, TOWNSHIP 19 SOUTH, RANGE 37 EAST, N.M.P.M.,
LEA COUNTY, NEW MEXICO



DIRECTIONS TO LOCATION

FROM THE INTERSECTION OF U.S. HWY. 62-180 AND CO. RD. H-41 (MADDOX RD.), GO SOUTH ON MADDOX. RD. APPROX. 2.8 MILES. TURN LEFT AND GO EAST APPROX. 0.3 MILES. THIS LOCATION IS APPROX. 65 FEET NORTH.



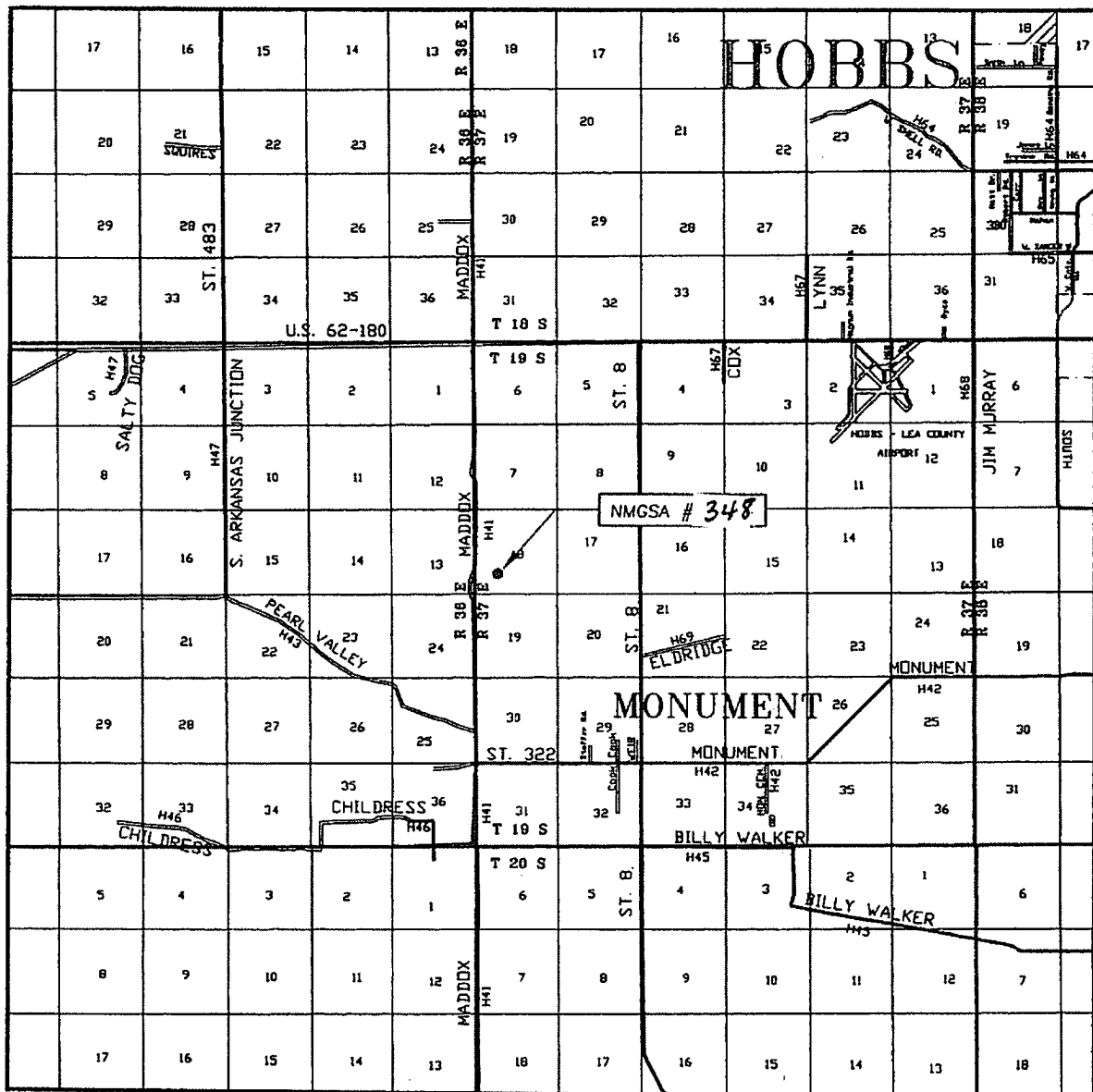
APACHE CORPORATION

NMGSA UNIT # 348
LOCATED 1310 FEET FROM THE SOUTH LINE
AND 1460 FEET FROM THE WEST LINE OF SECTION 18,
TOWNSHIP 19 SOUTH, RANGE 37 EAST, N.M.P.M.,
LEA COUNTY, NEW MEXICO.

Survey Date: 05/09/06	Sheet 1 of 1 Sheets
W.O. Number: 06.11.0759	Dr By: M.R.
Date: 05/12/06	Disk: CD#6
06110759	Scale: 1"=100'

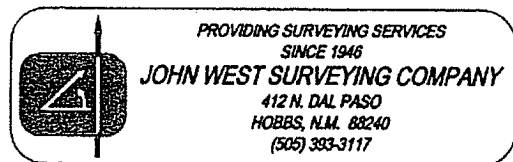
PROVIDING SURVEYING SERVICES
SINCE 1946
JOHN WEST SURVEYING COMPANY
412 N. DAL PASO
HOBBS, N.M. 88240
(505) 393-3117

VICINITY MAP




SCALE: 1" = 2 MILES

SEC. 18 TWP. 19-S RGE. 37-E
 SURVEY N.M.P.M.
 COUNTY LEA STATE NEW MEXICO
 DESCRIPTION 1310' FSL & 1460' FWL
 ELEVATION 3695'
 OPERATOR APACHE CORPORATION
 LEASE NMGSA UNIT



Topographic map showing the NMCSA Unit #348 area. The map includes contour lines, elevation points, and a grid system. A callout box points to a specific location labeled "NMCSA UNIT #348". The map is overlaid with a grid showing section numbers 12, 13, 16, 20, 21, 24, 25, 28, 29, 30, and 31. A note on the left indicates "CO. RD. 11-41 (MADDOX)".



PROVIDING SURVEYING SERVICES
 SINCE 1946
JOHN WEST SURVEYING COMPANY
 412 N. DAL PASO
 HOBBS, N.M. 88240
 (505) 393-3117