

DISTRICT I
1625 N. FRENCH DR., BOBBS, NM 88240

DISTRICT II
1301 W. GRAND AVENUE, ARTESIA, NM 88210

DISTRICT III
1000 Rio Brazos Rd., Aztec, NM 87410

DISTRICT IV
1220 S. ST. FRANCIS DR., SANTA FE, NM 87505

State of New Mexico
Energy, Minerals and Natural Resources Department

OIL CONSERVATION DIVISION
1220 SOUTH ST. FRANCIS DR.
Santa Fe, New Mexico 87505

Form C-102
Revised October 12, 2005
Submit to Appropriate District Office
State Lease - 4 Copies
Fee Lease - 3 Copies

WELL LOCATION AND ACREAGE DEDICATION PLAT

☐ AMENDED REPORT

API Number 30-025-38146	Pool Code 23000	Pool Name Eunice Monument GB/SA
Property Code 302208	Property Name NMGSAU	Well Number 344
OGRID No. 873	Operator Name APACHE CORPORATION	Elevation 3678'

Surface Location

UL or lot No. G	Section 20	Township 19-S	Range 37-E	Lot Idn	Feet from the 2475	North/South line NORTH	Feet from the 2490	East/West line EAST	County LEA
---------------------------	----------------------	-------------------------	----------------------	---------	------------------------------	----------------------------------	------------------------------	-------------------------------	----------------------

Bottom Hole Location If Different From Surface

UL or lot No.	Section	Township	Range	Lot Idn	Feet from the	North/South line	Feet from the	East/West line	County
Dedicated Acres 4.0	Joint or Infill	Consolidation Code	Order No.						

NO ALLOWABLE WILL BE ASSIGNED TO THIS COMPLETION UNTIL ALL INTERESTS HAVE BEEN CONSOLIDATED
OR A NON-STANDARD UNIT HAS BEEN APPROVED BY THE DIVISION

	<p>OPERATOR CERTIFICATION</p> <p>I hereby certify that the information herein is true and complete to the best of my knowledge and belief, and that this organization either owns a working interest or unleased mineral interest in the land including the proposed bottom hole location or has a right to drill this well at this location pursuant to a contract with an owner of such mineral or working interest, or to a voluntary pooling agreement or a compulsory pooling order heretofore entered by the division.</p> <p><i>Lana Williams</i> 7/28/06 Signature Date</p> <p><u>Lana Williams</u> Printed Name</p>
<p>GEODETIC COORDINATES NAD 27 NME</p> <p>Y=600405.7 N X=826494.6 E</p> <p>LAT.=32°38'46.09" N LONG.=103°16'21.46" W</p>	<p>SURVEYOR CERTIFICATION</p> <p>I hereby certify that the well location shown on this plat was plotted from field notes of actual surveys made by me or under my supervision, and that the same is true and correct to the best of my belief.</p> <p>MAY 09, 2006</p> <p>Date Surveyed REVISION DATE: 06/13/06 Signature & Seal of Professional Surveyor MR</p> <p><i>Gary E. Edson</i> 6/14/06 06.13.1012</p> <p>Certificate No. GARY EDSON: 12041 RONALD J. EDSON 3239</p>

DISTRICT I
1625 N. FRENCH DR., HOES, NM 88240

DISTRICT II
1301 W. GRAND AVENUE, ARTESIA, NM 88210

DISTRICT III
1000 Rio Brazos Rd., Aztec, NM 87410

DISTRICT IV
1220 S. ST. FRANCIS DR., SANTA FE, NM 87505

State of New Mexico
Energy, Minerals and Natural Resources Department

OIL CONSERVATION DIVISION
1220 SOUTH ST. FRANCIS DR.
Santa Fe, New Mexico 87505

Form C-102
Revised October 12, 2005
Submit to Appropriate District Office
State Lease - 4 Copies
Fee Lease - 3 Copies

WELL LOCATION AND ACREAGE DEDICATION PLAT

☐ AMENDED REPORT

API Number	Pool Code	Pool Name
Property Code	Property Name NMGSAU	Well Number 344
OGRID No.	Operator Name APACHE CORPORATION	Elevation 3678'

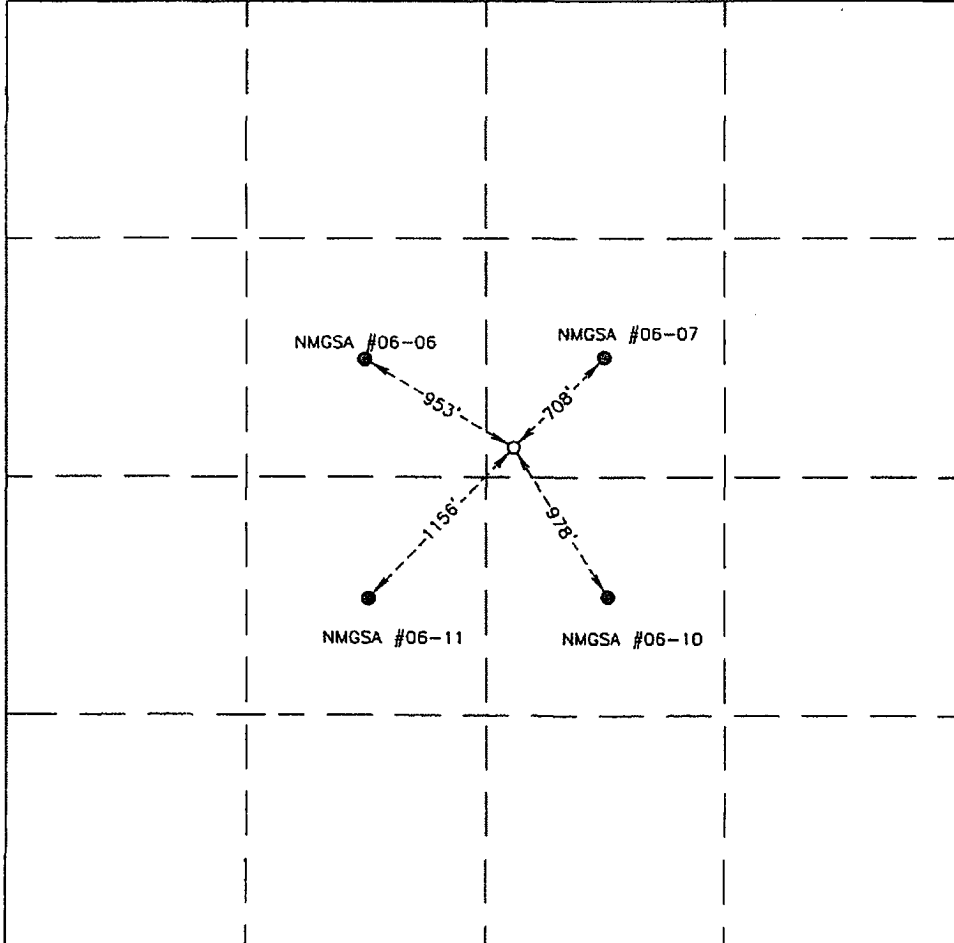
Surface Location

UL or lot No.	Section	Township	Range	Lot Idn	Feet from the	North/South line	Feet from the	East/West line	County
G	20	19-S	37-E		2475	NORTH	2490	EAST	LEA

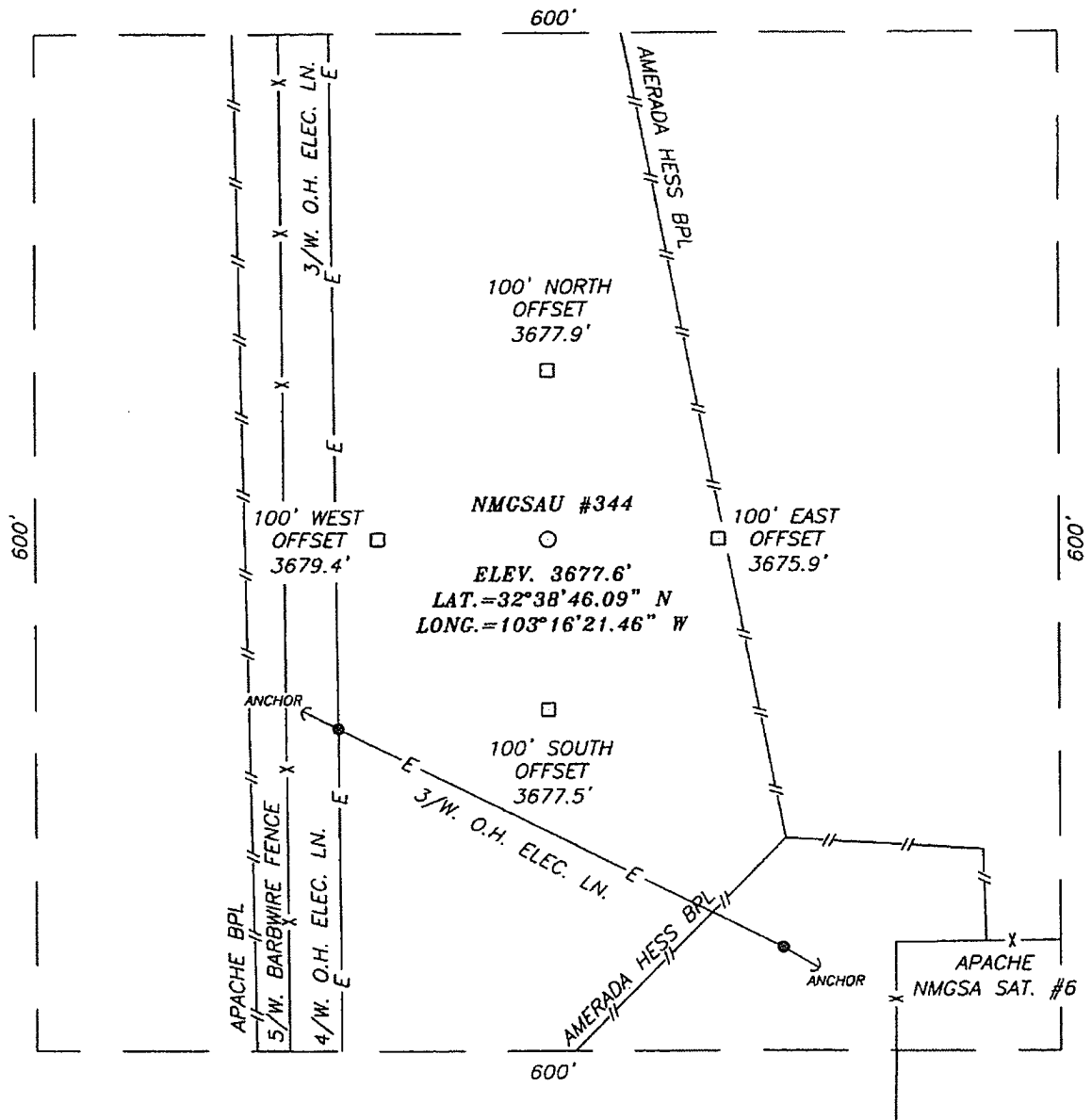
Bottom Hole Location If Different From Surface

UL or lot No.	Section	Township	Range	Lot Idn	Feet from the	North/South line	Feet from the	East/West line	County
Dedicated Acres	Joint or Infill	Consolidation Code	Order No.						

NO ALLOWABLE WILL BE ASSIGNED TO THIS COMPLETION UNTIL ALL INTERESTS HAVE BEEN CONSOLIDATED
OR A NON-STANDARD UNIT HAS BEEN APPROVED BY THE DIVISION

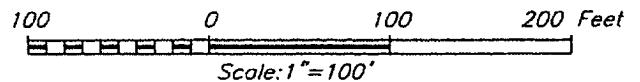
	<p>OPERATOR CERTIFICATION</p> <p>I hereby certify that the information herein is true and complete to the best of my knowledge and belief, and that this organization either owns a working interest or unleased mineral interest in the land including the proposed bottom hole location or has a right to drill this well at this location pursuant to a contract with an owner of such mineral or working interest, or to a voluntary pooling agreement or a compulsory pooling order heretofore entered by the division.</p> <p><i>Lana Williams</i> 9/28/06 Signature Date</p> <p><u>Lana Williams</u> Printed Name</p> <p>SURVEYOR CERTIFICATION</p> <p>I hereby certify that the well location shown on this plat was plotted from field notes of actual surveys made by me or under my supervision, and that the same is true and correct to the best of my belief.</p> <p>MAY 09, 2006</p> <p>Date Surveyed REVISION DATE: 06/13/06 Signature & Seal of MR Professional Surveyor</p> <p>06.13.1012</p> <p>Certificate No. GARY EIDSON 12041 RONALD J. EIDSON 3239</p>
---	--

SECTION 18, TOWNSHIP 19 SOUTH, RANGE 37 EAST, N.M.P.M.,
LEA COUNTY, NEW MEXICO



DIRECTIONS TO LOCATION

FROM THE INTERSECTION OF ST. HWY. #8 AND ST. HWY. #322, GO NORTH ON ST. HWY. #8 APPROX. 1.4 MILES. TURN LEFT (THROUGH CATTLE GUARD) AND GO WEST APPROX. 0.4 MILES. TURN RIGHT AND GO NORTH APPROX. 0.1 MILES TO THE APACHE NMGSA SAT. #6. THIS LOCATION IS APPROX. 400 FEET NORTHWEST.



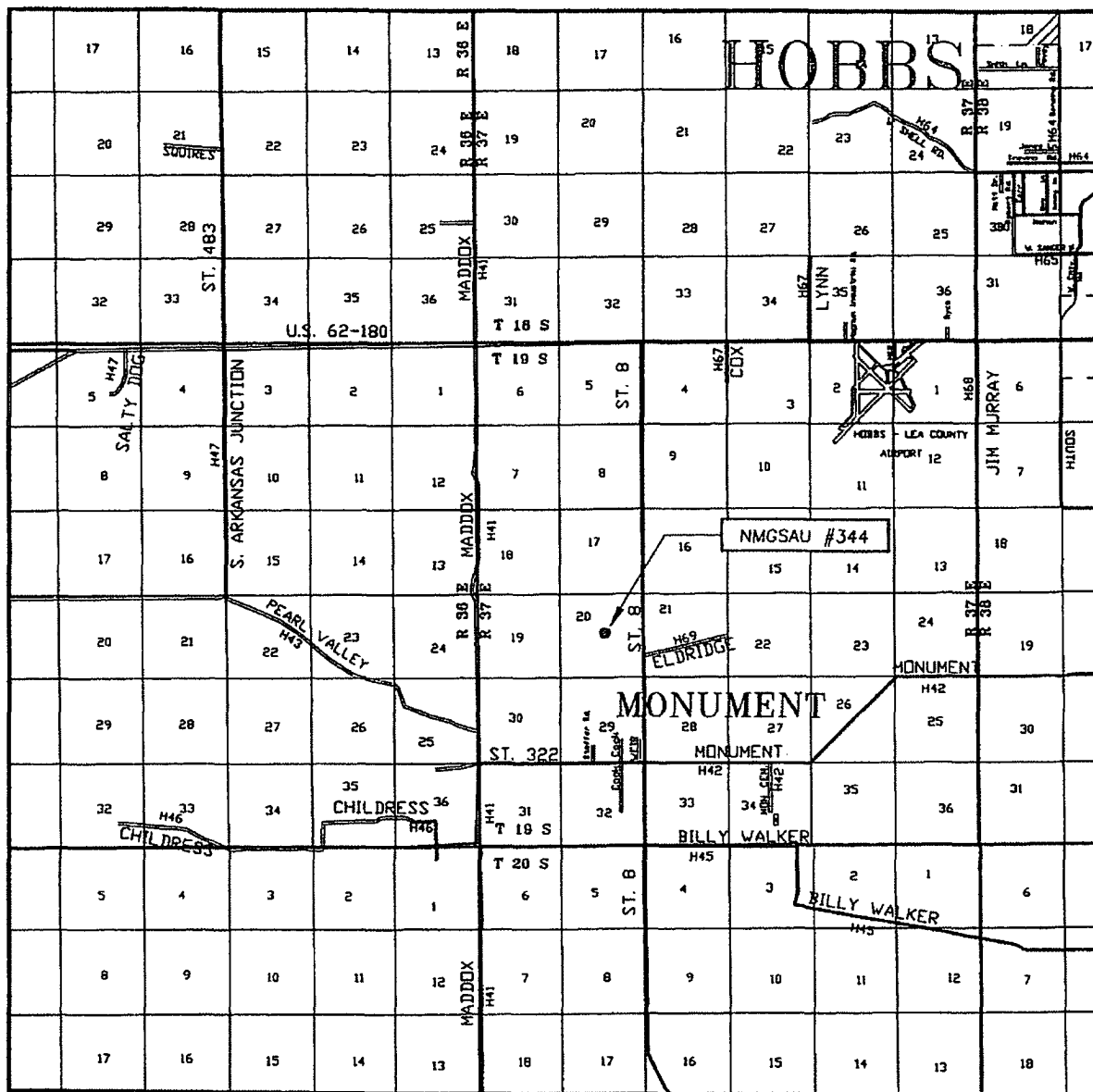
APACHE CORPORATION

NMGSAU #344
LOCATED 2475 FEET FROM THE NORTH LINE
AND 2490 FEET FROM THE EAST LINE OF SECTION 20,
TOWNSHIP 19 SOUTH, RANGE 37 EAST, N.M.P.M.,
LEA COUNTY, NEW MEXICO.

Survey Date: 05/09/06	Sheet 1 of 1 Sheets
W.O. Number: 06.13.1012	Dr By: M.R.
Date: 05/12/06	Disk: CD#6
06131012	Scale: 1"=100'

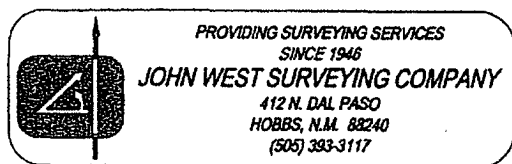
PROVIDING SURVEYING SERVICES
SINCE 1946
JOHN WEST SURVEYING COMPANY
412 N. DAL PASO
HOBBS, N.M. 88240
(505) 393-3117

VICINITY MAP

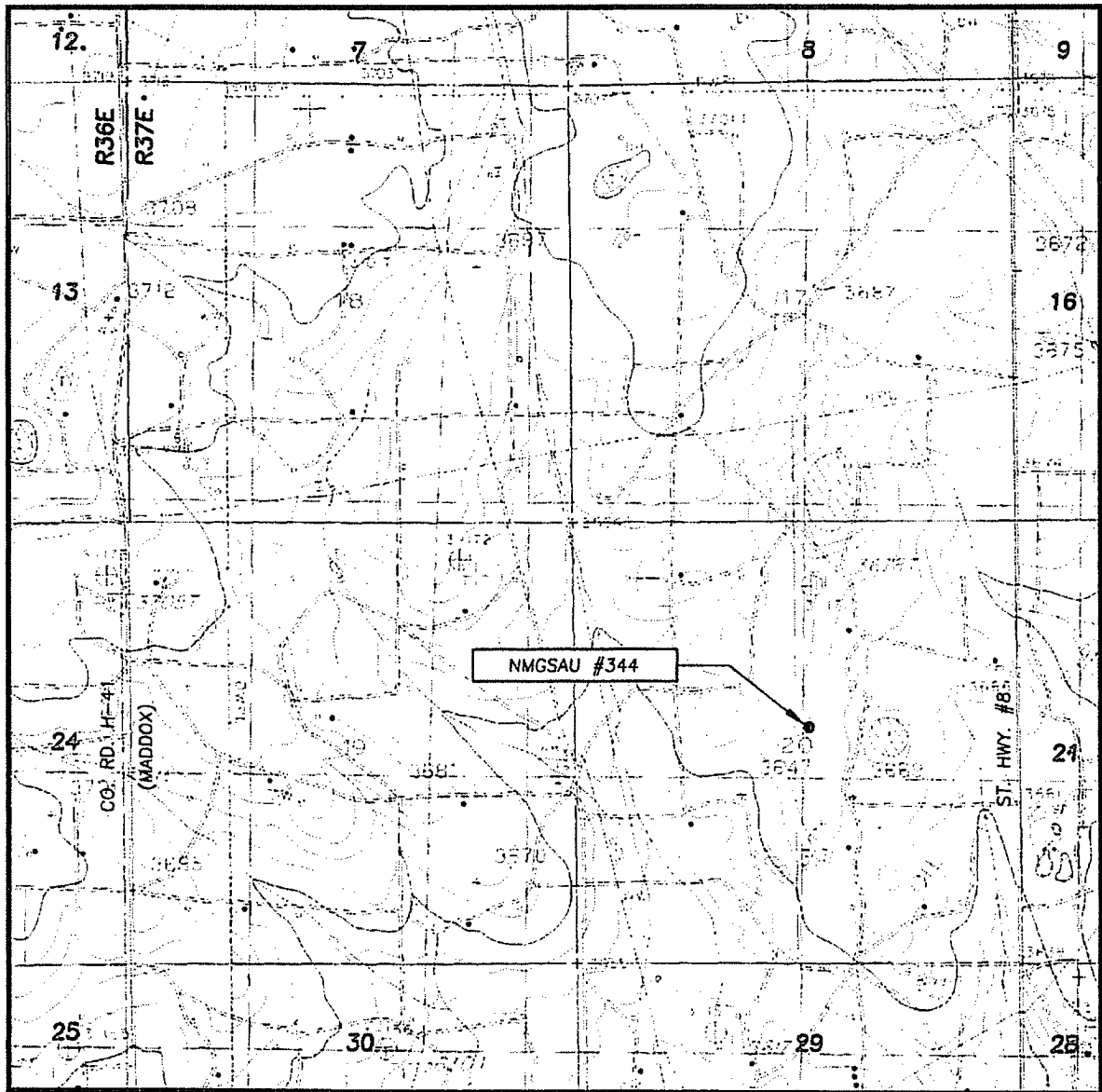


SCALE: 1" = 2 MILES

SEC. 20 TWP. 19-S RGE. 37-E
 SURVEY N.M.P.M.
 COUNTY LEA STATE NEW MEXICO
 DESCRIPTION 2475' FNL & 2490' FEL
 ELEVATION 3678'
 OPERATOR APACHE CORPORATION
 LEASE NMGSAU



LOCATION VERIFICATION MAP



SCALE: 1" = 2000'

CONTOUR INTERVAL:
MONUMENT NORTH, N.M. - 10'
(WITH 5' SUPPLEMENTARY CONTOUR INTERVALS)

SEC. 20 TWP. 19-S RGE. 37-E

SURVEY _____ N.M.P.M.

COUNTY LEA STATE NEW MEXICO

DESCRIPTION 2475' FNL & 2490' FEL

ELEVATION 3678'

OPERATOR APACHE CORPORATION

LEASE NMGSAU

U.S.G.S. TOPOGRAPHIC MAP
MONUMENT NORTH, N.M.

