

DISTRICT I  
1625 N. FRENCH DR., BOBBS, NM 88240

DISTRICT II  
1301 W. GRAND AVENUE, ARTESIA, NM 88210

DISTRICT III  
1000 Rio Brazos Rd., Aztec, NM 87410

DISTRICT IV  
1220 S. ST. FRANCIS DR., SANTA FE, NM 87505

State of New Mexico  
Energy, Minerals and Natural Resources Department

OIL CONSERVATION DIVISION  
1220 SOUTH ST. FRANCIS DR.  
Santa Fe, New Mexico 87505

Form C-102  
Revised October 12, 2005  
Submit to Appropriate District Office  
State Lease - 4 Copies  
Fee Lease - 3 Copies

WELL LOCATION AND ACREAGE DEDICATION PLAT

☐ AMENDED REPORT

API Number <b>38-025-38148</b>	Pool Code <b>23000</b>	Pool Name <b>Eunice Monument GB/SA</b>
Property Code <b>302708</b>	Property Name <b>NMGSA UNIT</b>	Well Number <b>354</b>
OGRID No. <b>873</b>	Operator Name <b>APACHE CORPORATION</b>	Elevation <b>3706'</b>

Surface Location

UL or lot No.	Section	Township	Range	Lot Idn	Feet from the	North/South line	Feet from the	East/West line	County
1	19	19-S	37-E		160	NORTH	200	WEST	LEA

Bottom Hole Location If Different From Surface

UL or lot No.	Section	Township	Range	Lot Idn	Feet from the	North/South line	Feet from the	East/West line	County
Dedicated Acres <b>40</b>	Joint or Infill	Consolidation Code	Order No.						

NO ALLOWABLE WILL BE ASSIGNED TO THIS COMPLETION UNTIL ALL INTERESTS HAVE BEEN CONSOLIDATED  
OR A NON-STANDARD UNIT HAS BEEN APPROVED BY THE DIVISION

<p>GEODETIC COORDINATES NAD 27 NME Y=602711.9 N X=818655.5 E LAT.=32.652686° N LONG.=103.298018° W</p>	<b>OPERATOR CERTIFICATION</b> <i>I hereby certify that the information herein is true and complete to the best of my knowledge and belief, and that this organization either owns a working interest or unleased mineral interest in the land including the proposed bottom hole location or has a right to drill this well at this location pursuant to a contract with an owner of such mineral or working interest, or to a voluntary pooling agreement or a compulsory pooling order heretofore entered by the division.</i>  <i>Lana Williams</i> 9/28/06 Signature Date  <i>Lana Williams</i> Printed Name
	<b>SURVEYOR CERTIFICATION</b> <i>I hereby certify that the well location shown on this plat was plotted from field notes of actual surveys made by me or under my supervision, and that the same is true and correct to the best of my belief.</i>  SEPTEMBER 05, 2006 Date Surveyed MR Signature & Seal of Professional Surveyor <i>GARY EIDSON</i> 06.11.1419 Certificate No. GARY EIDSON 12641

## DISTRICT I

1625 N. FRENCH DR., HOBBS, NM 88240

## State of New Mexico

Energy, Minerals and Natural Resources Department

## DISTRICT II

1501 W. GRAND AVENUE, ALBUQUERQUE, NM 88210

## OIL CONSERVATION DIVISION

1220 SOUTH ST. FRANCIS DR.

Santa Fe, New Mexico 87505

Form C-102

Revised October 12, 2005

Submit to Appropriate District Office

State Lease - 4 Copies

Fee Lease - 3 Copies

## DISTRICT III

1000 Rio Brazos Rd., Aztec, NM 87410

## DISTRICT IV

1220 S. ST. FRANCIS DR., SANTA FE, NM 87505

## WELL LOCATION AND ACREAGE DEDICATION PLAT

☐ AMENDED REPORT

API Number	Pool Code	Pool Name
Property Code	Property Name NMGSA UNIT	Well Number 354
OGRID No.	Operator Name APACHE CORPORATION	Elevation 3706'

## Surface Location

UL or lot No.	Section	Township	Range	Lot Idn	Feet from the	North/South line	Feet from the	East/West line	County
1	19	19-S	37-E		160	NORTH	200	WEST	LEA

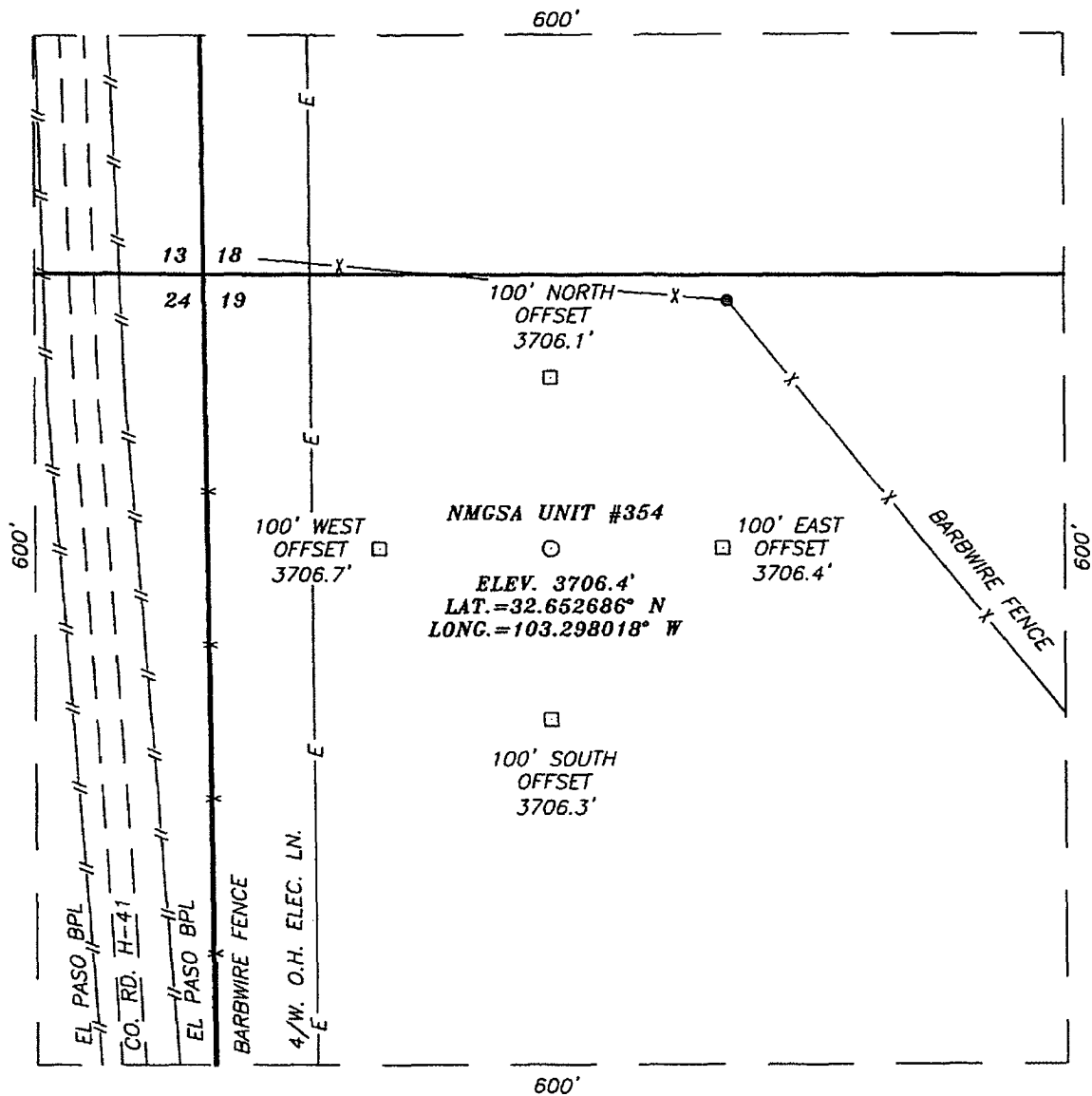
## Bottom Hole Location If Different From Surface

UL or lot No.	Section	Township	Range	Lot Idn	Feet from the	North/South line	Feet from the	East/West line	County
Dedicated Acres	Joint or Infill	Consolidation Code	Order No.						

NO ALLOWABLE WILL BE ASSIGNED TO THIS COMPLETION UNTIL ALL INTERESTS HAVE BEEN CONSOLIDATED  
OR A NON-STANDARD UNIT HAS BEEN APPROVED BY THE DIVISION

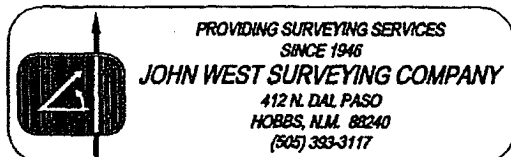
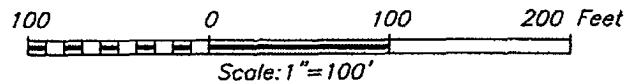
	<b>OPERATOR CERTIFICATION</b> I hereby certify that the information herein is true and complete to the best of my knowledge and belief, and that this organization either owns a working interest or unleased mineral interest in the land including the proposed bottom hole location or has a right to drill this well at this location pursuant to a contract with an owner of such mineral or working interest, or to a voluntary pooling agreement or a compulsory pooling order heretofore entered by the division. <u>Lana Williams</u> 9/28/06 Signature Date <u>Lana Williams</u> Printed Name
	<b>SURVEYOR CERTIFICATION</b> I hereby certify that the well location shown on this plat was plotted from field notes of actual surveys made by me or under my supervision, and that the same is true and correct to the best of my belief. SEPTEMBER 05, 2006 Date Surveyed MR Signature & Seal of Professional Surveyor 06.11.1419 Certificate No. GARY EIDSON 12841

**SECTION 19, TOWNSHIP 19 SOUTH, RANGE 37 EAST, N.M.P.M.,**  
 LEA COUNTY, NEW MEXICO



**DIRECTIONS TO LOCATION**


FROM CO. RD. H-41 (MADDOX RD.) AND ST. HWY. #322, GO NORTH ON CO. RD. H-41 APPROX. 2.0 MILES. THIS LOCATION IS APPROX. 200 FEET EAST.



**APACHE CORPORATION**

NMGSA UNIT #354  
 LOCATED 160 FEET FROM THE NORTH LINE  
 AND 200 FEET FROM THE WEST LINE OF SECTION 19,  
 TOWNSHIP 19 SOUTH, RANGE 37 EAST, N.M.P.M.,  
 LEA COUNTY, NEW MEXICO.

Survey Date: 09/05/06	Sheet 1 of 1 Sheets
W.O. Number: 06.11.1419	Dr By: M.R.
Date: 09/11/06	Disk: CD#6
06111419	Scale: 1"=100'



PROVIDING SURVEYING SERVICES  
 SINCE 1946  
**JOHN WEST SURVEYING COMPANY**  
 412 N. DAL PASO  
 HOBBS, N.M. 88240  
 (505) 393-3117

# LOCATION VERIFICATION MAP



SCALE: 1" = 2000'

CONTOUR INTERVAL:  
MONUMENT NORTH, N.M. - 10'

SEC. 19 TWP. 19-S RGE. 37-E

SURVEY N.M.P.M.

COUNTY LEA STATE NEW MEXICO

DESCRIPTION 160' FNL & 200' FWL

ELEVATION 3706'

OPERATOR APACHE CORPORATION

LEASE NMGSA UNIT

U.S.G.S. TOPOGRAPHIC MAP  
MONUMENT NORTH, N.M.

