

State of New Mexico

Energy, Minerals and Natural Resources Department

DISTRICT I

1625 N. PRENCH DR., HOBBS, NM 88240

DISTRICT II

1301 W. GRAND AVENUE, ARTESIA, NM 88210

DISTRICT III

1000 Rio Brazos Rd., Aztec, NM 87410

DISTRICT IV

1220 S. ST. FRANCIS DR., SANTA FE, NM 87505

OIL CONSERVATION DIVISION

1220 SOUTH ST. FRANCIS DR.
Santa Fe, New Mexico 87505

Form C-102

Revised October 12, 2005

Submit to Appropriate District Office

State Lease - 4 Copies

Fee Lease - 3 Copies

WELL LOCATION AND ACREAGE DEDICATION PLAT

☐ AMENDED REPORT

API Number 30-025-38152	Pool Code 22503	Pool Name Eunice BL-TU-DR North
Property Code 22503	Property Name NEDU	Well Number 243
OGRID No. 873	Operator Name APACHE CORPORATION	Elevation 3427'

Surface Location

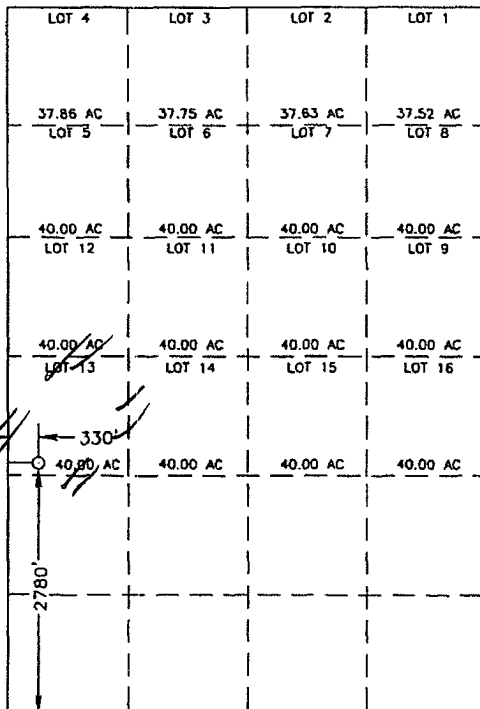
UL or lot No.	Section	Township	Range	Lot Idn	Feet from the	North/South line	Feet from the	East/West line	County
E 13	3	21-S	37-E		2780	SOUTH	330	WEST	LEA

Bottom Hole Location If Different From Surface

UL or lot No.	Section	Township	Range	Lot Idn	Feet from the	North/South line	Feet from the	East/West line	County

Dedicated Acres	Joint or Infill	Consolidation Code	Order No.
40			

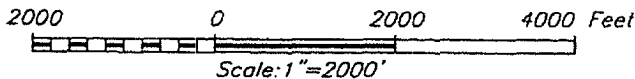
NO ALLOWABLE WILL BE ASSIGNED TO THIS COMPLETION UNTIL ALL INTERESTS HAVE BEEN CONSOLIDATED
OR A NON-STANDARD UNIT HAS BEEN APPROVED BY THE DIVISION



GEODETIC COORDINATES
NAD 27 NME

Y=550593.5 N
X=862358.9 E

LAT.=32°30'29.52" N
LONG.=103°09'28.51" W



OPERATOR CERTIFICATION

I hereby certify that the information herein is true and complete to the best of my knowledge and belief, and that this organization either owns a working interest or unleased mineral interest in the land including the proposed bottom hole location or has a right to drill this well at this location pursuant to a contract with an owner of such mineral or working interest, or to a voluntary pooling agreement or a compulsory pooling order heretofore entered by the division.

Lana Williams 10/2/06
Signature Date

Lana Williams
Printed Name

SURVEYOR CERTIFICATION

I hereby certify that the well location shown on this plat was plotted from field notes of actual surveys made by me or under my supervision, and that the same is true and correct to the best of my belief.

JUNE 05, 2006

Date Surveyed MR
Signature & Seal of Professional Surveyor

Ronald J. Edson 6/9/06
06-11-0900

Certificate No. GARY EDSON 12641
RONALD J. EDSON 3239

State of New Mexico

Energy, Minerals and Natural Resources Department

Form C-102

Revised October 12, 2005

Submit to Appropriate District Office

State Lease - 4 Copies

Fee Lease - 3 Copies

DISTRICT I

1625 N. FRENCH DR., HOBBS, NM 80240

DISTRICT II

1301 W. GRAND AVENUE, ARTESIA, NM 88210

DISTRICT III

1000 Rio Brazos Rd., Aztec, NM 87410

DISTRICT IV

1220 S. ST. FRANCIS DR., SANTA FE, NM 87505

OIL CONSERVATION DIVISION

1220 SOUTH ST. FRANCIS DR.

Santa Fe, New Mexico 87505

WELL LOCATION AND ACREAGE DEDICATION PLAT

☐ AMENDED REPORT

API Number		Pool Code	Pool Name
Property Code	Property Name NEDU		Well Number 243
OGRID No.	Operator Name APACHE CORPORATION		Elevation 3427'

Surface Location

UL or lot No.	Section	Township	Range	Lot Idn	Feet from the	North/South line	Feet from the	East/West line	County
13	3	21-S	37-E		2780	SOUTH	330	WEST	LEA

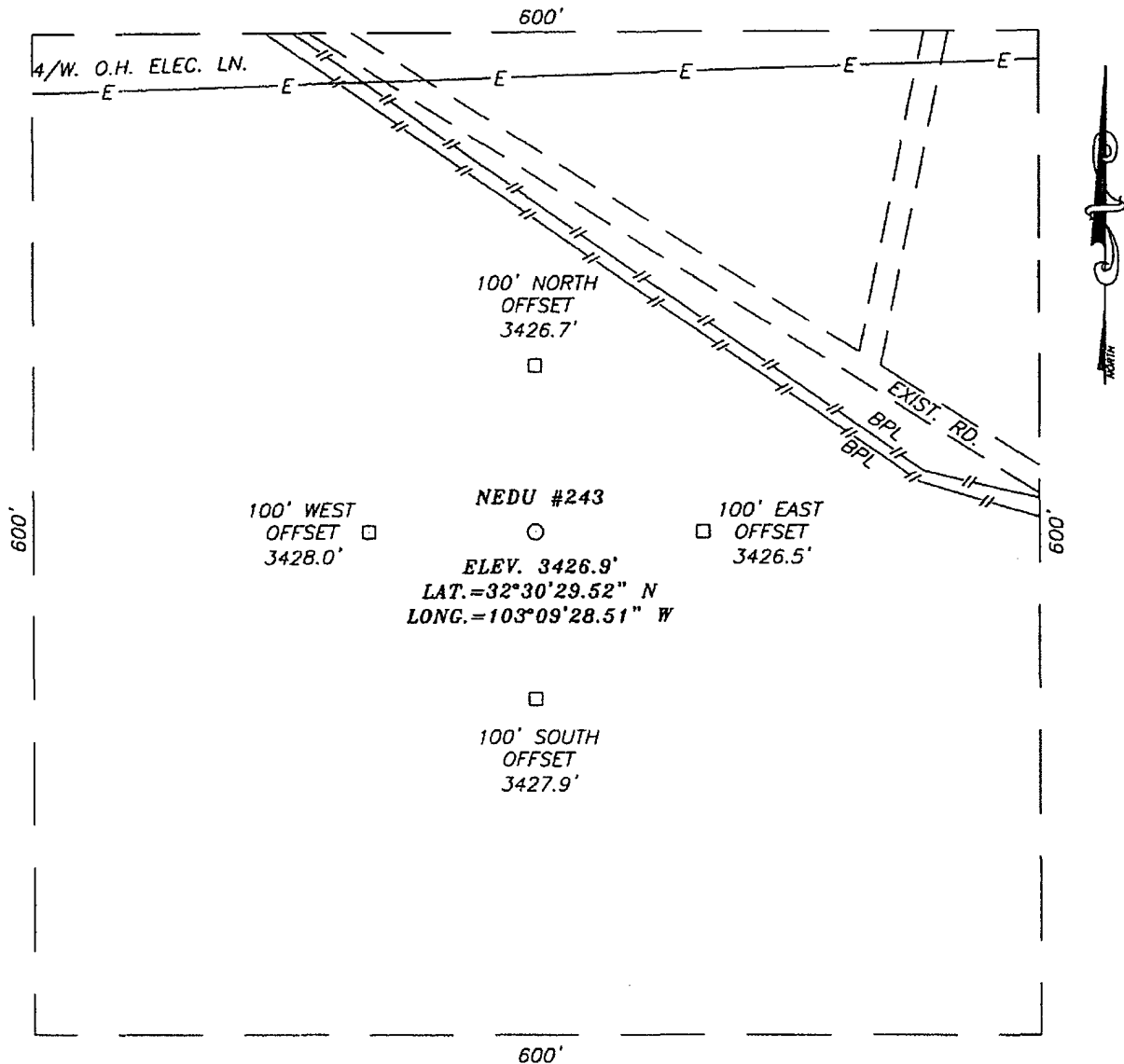
Bottom Hole Location If Different From Surface

UL or lot No.	Section	Township	Range	Lot Idn	Feet from the	North/South line	Feet from the	East/West line	County
Dedicated Acres	Joint or Infill	Consolidation Code	Order No.						

NO ALLOWABLE WILL BE ASSIGNED TO THIS COMPLETION UNTIL ALL INTERESTS HAVE BEEN CONSOLIDATED
OR A NON-STANDARD UNIT HAS BEEN APPROVED BY THE DIVISION

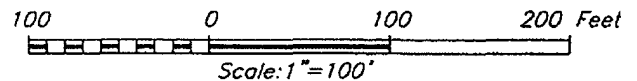
								<h3>OPERATOR CERTIFICATION</h3> <p>I hereby certify that the information herein is true and complete to the best of my knowledge and belief, and that this organization either owns a working interest or unleased mineral interest in the land including the proposed bottom hole location or has a right to drill this well at this location pursuant to a contract with an owner of such mineral or working interest, or to a voluntary pooling agreement or a compulsory pooling order heretofore entered by the division.</p> <p><i>Lana Williams</i> 10/2/06 Signature Date</p> <p><u>Lana Williams</u> Printed Name</p>	
<h3>SURVEYOR CERTIFICATION</h3> <p>I hereby certify that the well location shown on this plat was plotted from field notes of actual surveys made by me or under my supervision, and that the same is true and correct to the best of my belief.</p> <p>JUNE 05, 2006</p> <p>Date Surveyed MR</p> <p>Signature & Seal of Professional Surveyor</p>								<p>06.11.0900</p> <p>Certificate No. GARY EIDSON 12841 RONALD J. EIDSON 3239</p>	

SECTION 3, TOWNSHIP 21 SOUTH, RANGE 37 EAST, N.M.P.M.,
LEA COUNTY, NEW MEXICO



DIRECTIONS TO LOCATION

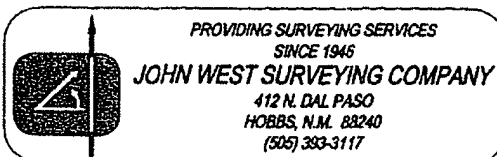
FROM THE INTERSECTION OF ST. HWY. #18 AND ST. HWY. 207, GO SOUTHWEST ON ST. HWY. 207 APPROX. 2.1 MILES. TURN RIGHT (THROUGH CATTLE GUARD), AND GO NORTHWEST APPROX. 0.8 MILE. THIS LOCATION IS APPROX. 200 FEET SOUTH.



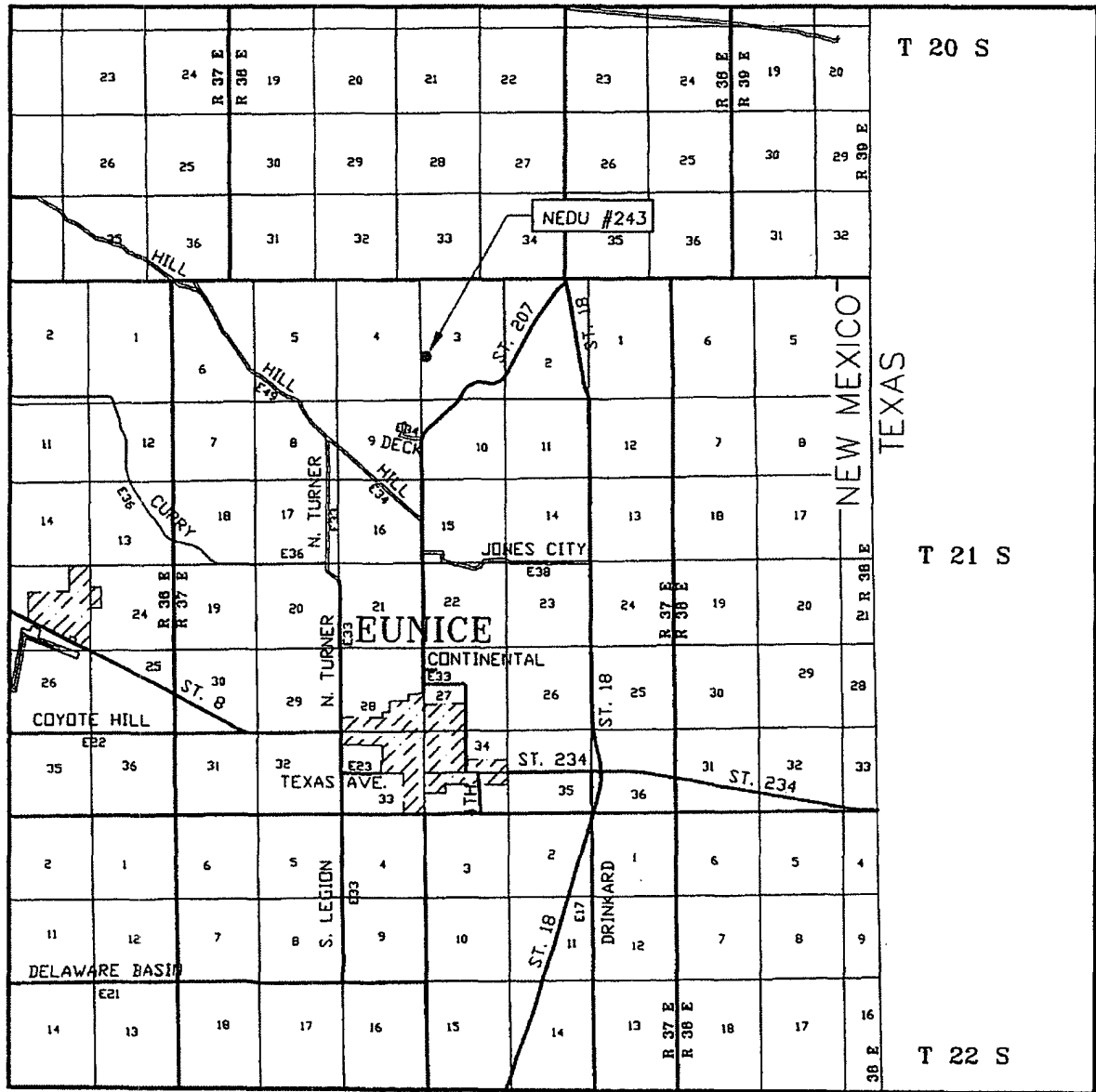
APACHE CORPORATION

NEDU #243
LOCATED 2780 FEET FROM THE SOUTH LINE
AND 330 FEET FROM THE WEST LINE OF SECTION 3,
TOWNSHIP 21 SOUTH, RANGE 37 EAST, N.M.P.M.,
LEA COUNTY, NEW MEXICO.

Survey Date: 06/05/06	Sheet 1 of 1 Sheets
W.O. Number: 06.11.0900	Dr By: M.R.
Date: 06/15/06	Disk: CD#6
06110900	Scale: 1"=100'



VICINITY MAP



SCALE: 1" = 2 MILES

SEC. 3 TWP. 21-S RGE. 37-E

SURVEY _____ N.M.P.M.

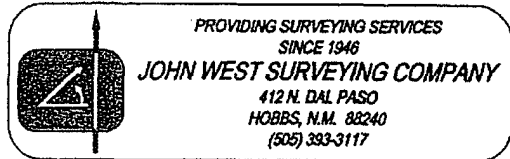
COUNTY LEA STATE NEW MEXICO

DESCRIPTION 2780' FSL & 330' FWL

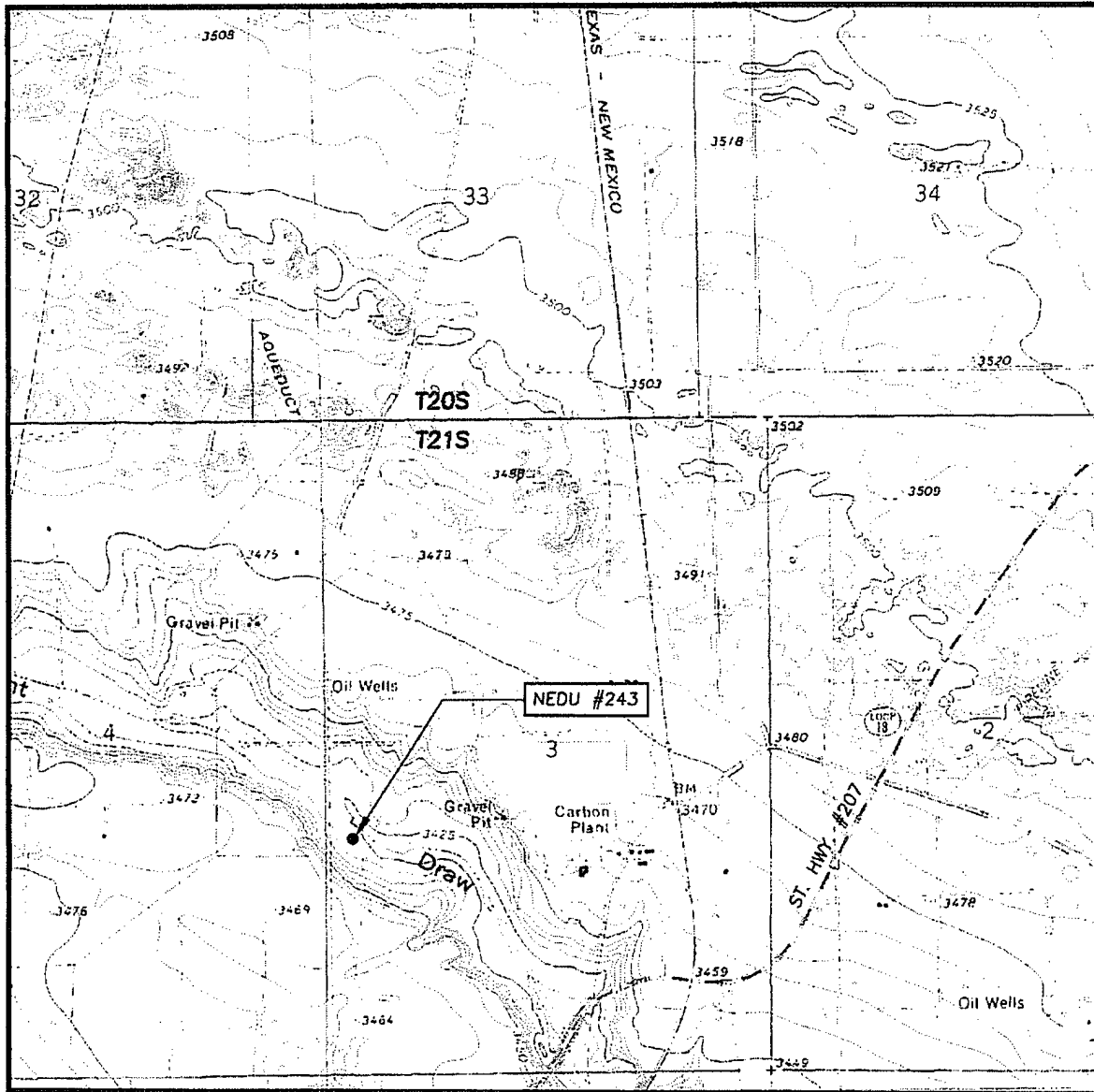
ELEVATION 3427'

OPERATOR APACHE CORPORATION

LEASE NEDU



LOCATION VERIFICATION MAP



SCALE: 1" = 2000'

CONTOUR INTERVAL:
HOBBS SW, N.M. - 5'

SEC. 3 TWP. 21-S RGE. 37-E

SURVEY N.M.P.M.

COUNTY LEA STATE NEW MEXICO

DESCRIPTION 2780' FSL & 330' FWL

ELEVATION 3427'

OPERATOR APACHE CORPORATION

LEASE NEDU

U.S.G.S. TOPOGRAPHIC MAP
HOBBS SW, N.M.

