

DISTRICT I
1025 N. FRENCH DR., BOBBS, NM 88240

DISTRICT II
1301 W. GRAND AVENUE, ARTESIA, NM 88210

DISTRICT III
1000 Rio Brazos Rd., Aztec, NM 87410

DISTRICT IV
1220 S. ST. FRANCIS DR., SANTA FE, NM 87505

State of New Mexico
Energy, Minerals and Natural Resources Department

OIL CONSERVATION DIVISION
1220 SOUTH ST. FRANCIS DR.
Santa Fe, New Mexico 87505

OK

Form C-102

Revised October 12, 2005

Submit to Appropriate District Office

State Lease - 4 Copies

Fee Lease - 3 Copies

WELL LOCATION AND ACREAGE DEDICATION PLAT

☐ AMENDED REPORT

API Number 30-025 38153	Pool Code 22900	Pool Name Eunice Bl. Tr. DR North
Property Code 22503	Property Name NEDU	Well Number 340
OGRID No. 873	Operator Name APACHE CORPORATION	Elevation 3483'

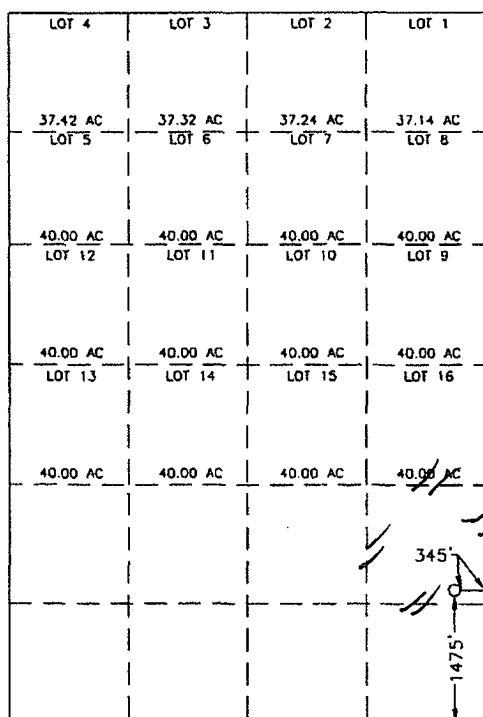
Surface Location

UL or lot No.	Section	Township	Range	Lot Idn	Feet from the	North/South line	Feet from the	East/West line	County
1	2	21-S	37-E		1475	SOUTH	345	EAST	LEA

Bottom Hole Location If Different From Surface

UL or lot No.	Section	Township	Range	Lot Idn	Feet from the	North/South line	Feet from the	East/West line	County
Dedicated Acres 4.0	Joint or Infill	Consolidation Code	Order No.						

NO ALLOWABLE WILL BE ASSIGNED TO THIS COMPLETION UNTIL ALL INTERESTS HAVE BEEN CONSOLIDATED
OR A NON-STANDARD UNIT HAS BEEN APPROVED BY THE DIVISION

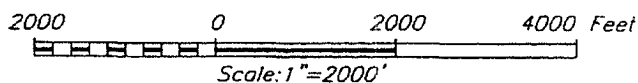


GEODETIC COORDINATES
NAD 27 NME

Y=549418.6 N
X=872251.7 E

LAT.=32.504667° N
LONG.=103.125878° W

LAT.=32°30'16.80" N
LONG.=103°07'33.16" W



OPERATOR CERTIFICATION

I hereby certify that the information herein is true and complete to the best of my knowledge and belief, and that this organization either owns a working interest or unleased mineral interest in the land including the proposed bottom hole location or has a right to drill this well at this location pursuant to a contract with an owner of such mineral or working interest, or to a voluntary pooling agreement or a compulsory pooling order heretofore entered by the division.

Lana Williams 10/2/06
Signature Date
Lana Williams
Printed Name

SURVEYOR CERTIFICATION

I hereby certify that the well location shown on this plat was plotted from field notes of actual surveys made by me or under my supervision, and that the same is true and correct to the best of my belief.

JUNE 16, 2006

Date Surveyed: LA
Signature & Seal of Professional Surveyor

Ronald J. Edson 6/29/06
06.11.0973

Certificate No. GARY EDSON 12841
RONALD J. EDSON 3239

<div style="display: flex; justify-content: space-around;"> LOT 4 LOT 3 LOT 2 LOT 1 </div>			
37.42 AC LOT 5	37.32 AC LOT 6	37.24 AC LOT 7	37.14 AC LOT 8
40.00 AC LOT 12	40.00 AC LOT 11	40.00 AC LOT 10	40.00 AC LOT 9
40.00 AC LOT 13	40.00 AC LOT 14	40.00 AC LOT 15	40.00 AC LOT 16
40.00 AC	40.00 AC	40.00 AC	40.00 AC

GEODETTIC COORDINATES
 NAD 27 NME
 Y=549418.6 N
 X=872251.7 E
 LAT.=32.504667° N
 LONG.=103.125878° W
 LAT.=32°30'16.80" N
 LONG.=103°07'33.16" W

OPERATOR CERTIFICATION

I hereby certify that the information herein is true and complete to the best of my knowledge and belief, and that this organization either owns a working interest or unleased mineral interest in the land including the proposed bottom hole location or has a right to drill this well at this location pursuant to a contract with an owner of such mineral or working interest, or to a voluntary pooling agreement or a compulsory pooling order heretofore entered by the division.

Lana Williams 10/21
 Signature Date
Lana Williams
 Printed Name

SURVEYOR CERTIFICATION

I hereby certify that the well location shown on this plat was plotted from field notes of actual surveys made by me or under my supervision, and that the same is true and correct to the best of my belief.

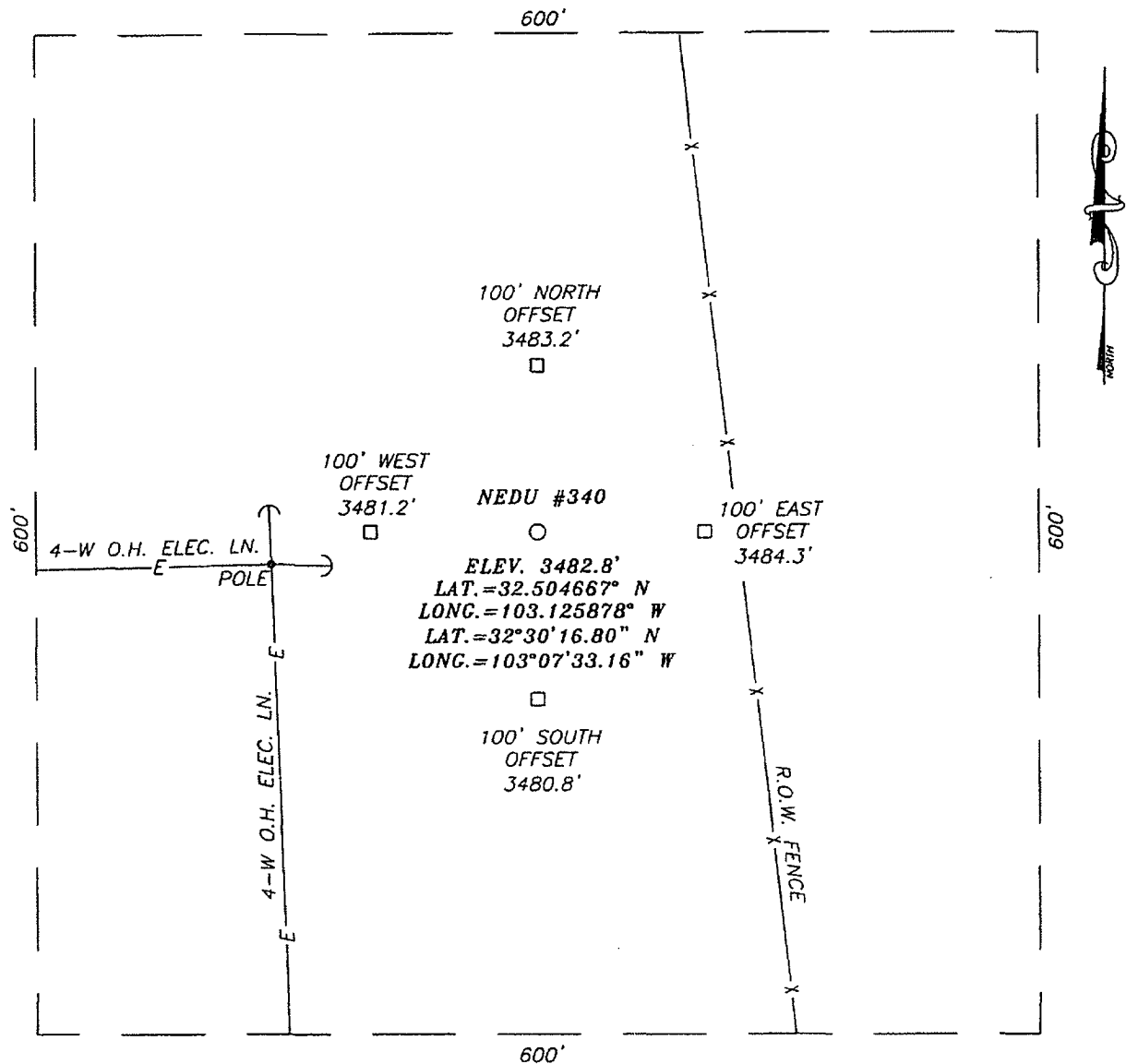
JUNE 16, 2006

Date Surveyed LA
 Signature & Seal of Professional Surveyor

06.11.0973

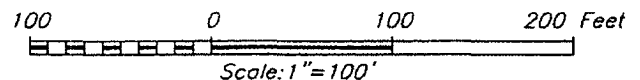
Certificate No. GARY EIDSON 12041
 RONALD J. EIDSON 3239

SECTION 2, TOWNSHIP 21 SOUTH, RANGE 37 EAST, N.M.P.M.,
LEA COUNTY, NEW MEXICO



DIRECTIONS TO LOCATION

FROM THE INTERSECTION OF ST. HWY. #18 AND ST. HWY. #207, GO SOUTH ON ST. HWY. #18 APPRX. 1.0 MILES. TURN RIGHT (THROUGH CATTLE GUARD) GO WEST APPRX. 0.2 MILES. TURN LEFT AND GO SOUTH APPRX. 0.1 MILES. TURN LEFT AND GO EAST TO THE APACHE NEDU #319. THIS LOCATION IS APPRX. 672 FEET SOUTHEAST.



APACHE CORPORATION

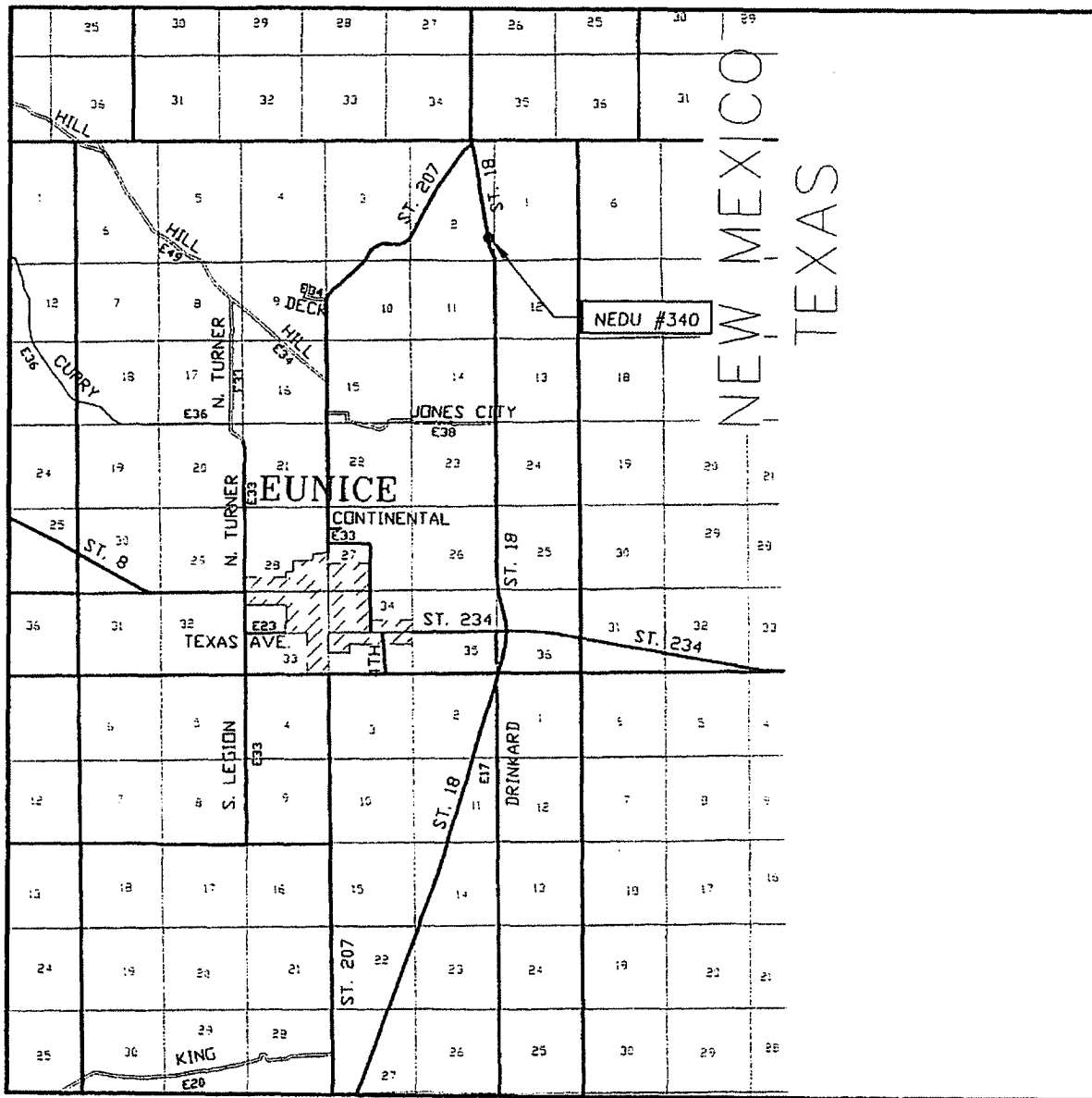
NEDU #340
LOCATED 1475 FEET FROM THE SOUTH LINE
AND 345 FEET FROM THE EAST LINE OF SECTION 2,
TOWNSHIP 21 SOUTH, RANGE 37 EAST, N.M.P.M.,
LEA COUNTY, NEW MEXICO.

Survey Date: 6/16/06	Sheet 1 of 1 Sheets
W.O. Number: 06.11.0973	Dr By: LA
Date: 6/27/06	Disk: CD#5
06110973	Scale: 1"=100'



PROVIDING SURVEYING SERVICES
SINCE 1948
JOHN WEST SURVEYING COMPANY
412 N. DAL PASO
HOBBS, N.M. 88240
(505) 393-3117

VICINITY MAP



SCALE: 1" = 2 MILES

SEC. 2 TWP. 21-S RGE. 37-E

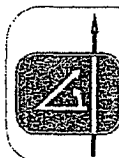
SURVEY_____N.M.P.M.

COUNTY LEA STATE NEW MEXICO

DESCRIPTION 1475' FSL & 345' FEL
ELEVATION 3483'

OPERATOR APACHE CORPORATION

LEASE _____ NEDU

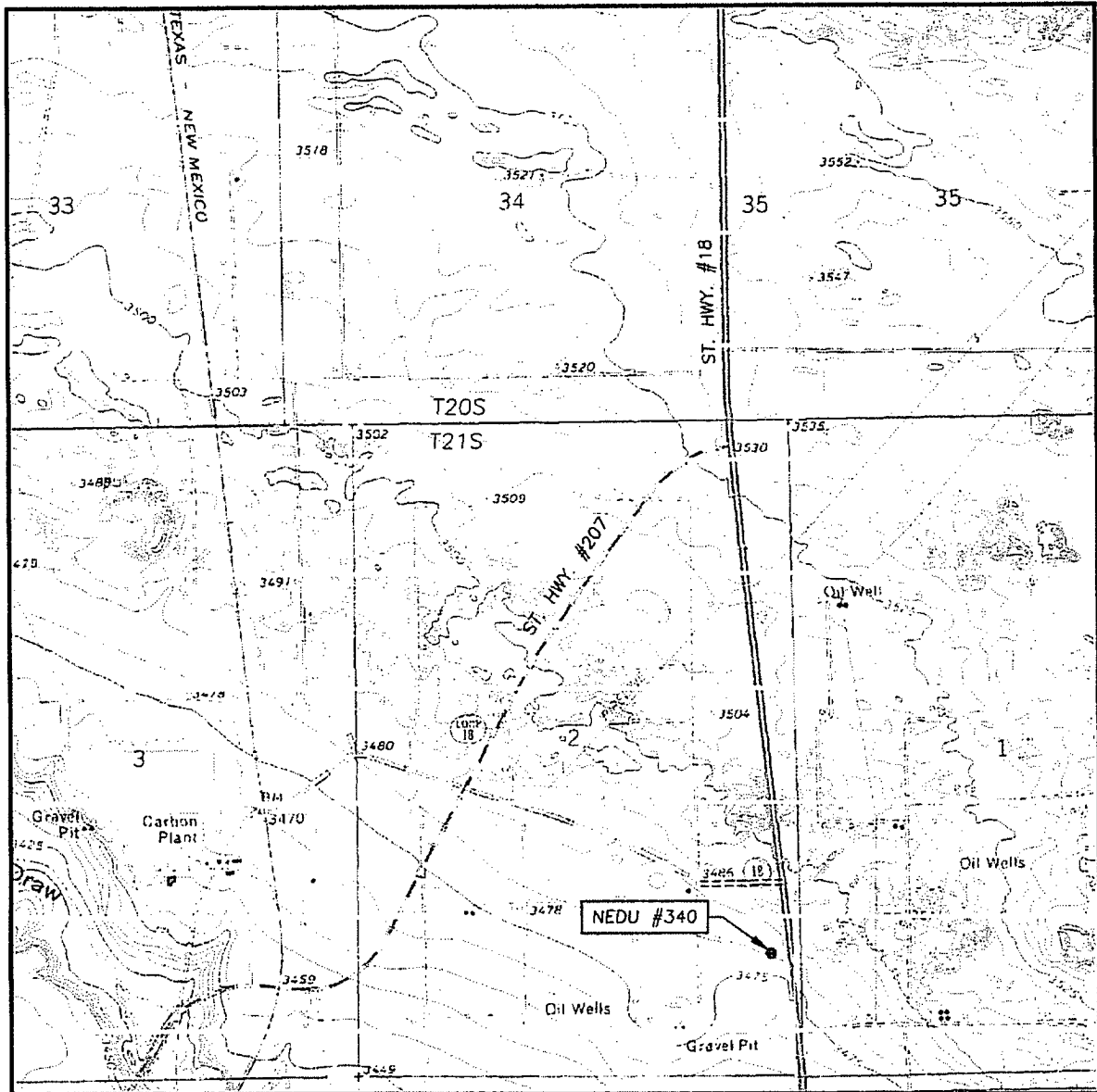


**PROVIDING SURVEYING SERVICES
SINCE 1946**

JOHN WEST SURVEYING COMPANY

412 N. DAL PASO
HOBBBS, N.M. 88240
(505) 393-3117

LOCATION VERIFICATION MAP



SCALE: 1" = 2000'

CONTOUR INTERVAL:
HOBBS SW, N.M. - 5'
HOBBS SE, N.M. - 5'

SEC. 2 TWP. 21-S RGE. 37-E

SURVEY N.M.P.M.

COUNTY LEA STATE NEW MEXICO

DESCRIPTION 1475' FSL & 345' FEL

ELEVATION 3483'

OPERATOR APACHE CORPORATION

LEASE NEDU

U.S.G.S. TOPOGRAPHIC MAP
HOBBS SW, N.M.

