

OK

DISTRICT I
1625 N. FRENCH DR., BODDS, NM 86240

State of New Mexico
Energy, Minerals and Natural Resources Department

DISTRICT II
1301 W. GRAND AVENUE, ARTESIA, NM 88210

OIL CONSERVATION DIVISION
1220 SOUTH ST. FRANCIS DR.
Santa Fe, New Mexico 87505

Form C-102
Revised October 12, 2005
Submit to Appropriate District Office
State Lease - 4 Copies
Fee Lease - 3 Copies

DISTRICT III
1000 Rio Brazos Rd., Aztec, NM 87410

DISTRICT IV
1220 S. ST. FRANCIS DR., SANTA FE, NM 87505

WELL LOCATION AND ACREAGE DEDICATION PLAT

☐ AMENDED REPORT

API Number 30-025-38154	Pool Code 22900	Pool Name Eunice BL-TL-DR North
Property Code 22503	Property Name NEDU	Well Number 341
OGRID No. 873	Operator Name APACHE CORPORATION	Elevation 3464'

Surface Location

UL or lot No.	Section	Township	Range	Lot Idn	Feet from the	North/South line	Feet from the	East/West line	County
L	3	21-S	37-E		1330	SOUTH	330	WEST	LEA

Bottom Hole Location If Different From Surface

UL or lot No.	Section	Township	Range	Lot Idn	Feet from the	North/South line	Feet from the	East/West line	County
Dedicated Acres 40		Joint or Infill	Consolidation Code	Order No.					

NO ALLOWABLE WILL BE ASSIGNED TO THIS COMPLETION UNTIL ALL INTERESTS HAVE BEEN CONSOLIDATED
OR A NON-STANDARD UNIT HAS BEEN APPROVED BY THE DIVISION

<p>LOT 4 LOT 3 LOT 2 LOT 1</p> <p>37.86 AC 37.75 AC 37.63 AC 37.52 AC</p> <p>LOT 5 LOT 6 LOT 7 LOT 8</p> <p>40.00 AC 40.00 AC 40.00 AC 40.00 AC</p> <p>LOT 12 LOT 11 LOT 10 LOT 9</p> <p>40.00 AC 40.00 AC 40.00 AC 40.00 AC</p> <p>LOT 13 LOT 14 LOT 15 LOT 16</p> <p>40.00 AC 40.00 AC 40.00 AC 40.00 AC</p> <p>330'</p> <p>1330'</p> <p>2000 0 2000 4000 Feet</p> <p>Scale: 1"=2000'</p>	<p>GEODETIC COORDINATES NAD 27 NME</p> <p>Y=549143.8 N X=862375.4 E</p> <p>LAT.=32°30'15.17" N LONG.=103°09'28.50" W</p>	<p>OPERATOR CERTIFICATION</p> <p>I hereby certify that the information herein is true and complete to the best of my knowledge and belief, and that this organization either owns a working interest or unleased mineral interest in the land including the proposed bottom hole location or has a right to drill this well at this location pursuant to a contract with an owner of such mineral or working interest, or to a voluntary pooling agreement or a compulsory pooling order heretofore entered by the division.</p> <p><i>Lana Williams</i> Signature Date Lana Williams 10/2/06 Printed Name</p> <p>SURVEYOR CERTIFICATION</p> <p>I hereby certify that the well location shown on this plat was plotted from field notes of actual surveys made by me or under my supervision, and that the same is true and correct to the best of my belief.</p> <p>JUNE 06, 2006</p> <p>Date Surveyed MR Signature & Seal of Professional Surveyor <i>Gary R. Eidson</i> 6/14/06 06.11.0899</p> <p>Certificate No. GARY EIDSON 12841 RONALD J. EIDSON 3239</p>
---------------------------------------------------------------------------------------------------------------------------------------------------------------------------------------------------------------------------------------------------------------------------------------------------------------------------------------------------------------------------------------------------------------------------------------------------	--------------------------------------------------------------------------------------------------------------------------------------	---------------------------------------------------------------------------------------------------------------------------------------------------------------------------------------------------------------------------------------------------------------------------------------------------------------------------------------------------------------------------------------------------------------------------------------------------------------------------------------------------------------------------------------------------------------------------------------------------------------------------------------------------------------------------------------------------------------------------------------------------------------------------------------------------------------------------------------------------------------------------------------------------------------------------------------------------------------------------------------------------------------------------------------------------------------------------------------------------------------------------

DISTRICT I
1025 N. FRENCH DR., HOBBS, NM 88240

DISTRICT II
1301 W. GRAND AVENUE, ARTESIA, NM 88210

DISTRICT III
1000 Rio Brazos Rd., Aztec, NM 87410

DISTRICT IV
1220 S. ST. FRANCIS DR., SANTA FE, NM 87505

State of New Mexico
Energy, Minerals and Natural Resources Department

OIL CONSERVATION DIVISION
1220 SOUTH ST. FRANCIS DR.
Santa Fe, New Mexico 87505

Form C-102
Revised October 12, 2005
Submit to Appropriate District Office
State Lease - 4 Copies
Fee Lease - 3 Copies

WELL LOCATION AND ACREAGE DEDICATION PLAT

☐ AMENDED REPORT

API Number		Pool Code	Pool Name
Property Code	Property Name NEDU		Well Number 341
OGRID No.	Operator Name APACHE CORPORATION		Elevation 3464'

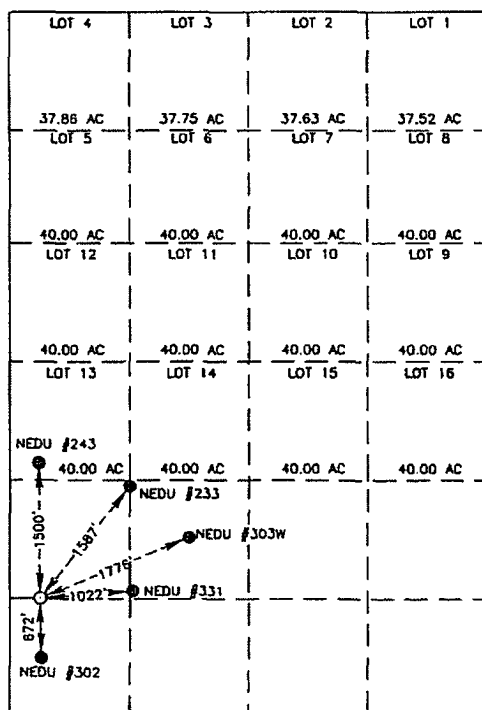
Surface Location

UL or lot No.	Section	Township	Range	Lot Idn	Feet from the	North/South line	Feet from the	East/West line	County
L	3	21-S	37-E		1330	SOUTH	330	WEST	LEA

Bottom Hole Location If Different From Surface

UL or lot No.	Section	Township	Range	Lot Idn	Feet from the	North/South line	Feet from the	East/West line	County
Dedicated Acres		Joint or Infill	Consolidation Code	Order No.					

NO ALLOWABLE WILL BE ASSIGNED TO THIS COMPLETION UNTIL ALL INTERESTS HAVE BEEN CONSOLIDATED
OR A NON-STANDARD UNIT HAS BEEN APPROVED BY THE DIVISION



GEODETTIC COORDINATES
NAD 27 NME

Y=549143.8 N
X=862375.4 E

LAT.=32°30'15.17" N
LONG.=103°09'28.50" W

OPERATOR CERTIFICATION

I hereby certify that the information herein is true and complete to the best of my knowledge and belief, and that this organization either owns a working interest or unleased mineral interest in the land including the proposed bottom hole location or has a right to drill this well at this location pursuant to a contract with an owner of such mineral or working interest, or to a voluntary pooling agreement or a compulsory pooling order heretofore entered by the division.

Lana Williams
Signature Date

Lana Williams 10/2/06
Printed Name

SURVEYOR CERTIFICATION

I hereby certify that the well location shown on this plat was plotted from field notes of actual surveys made by me or under my supervision, and that the same is true and correct to the best of my belief.

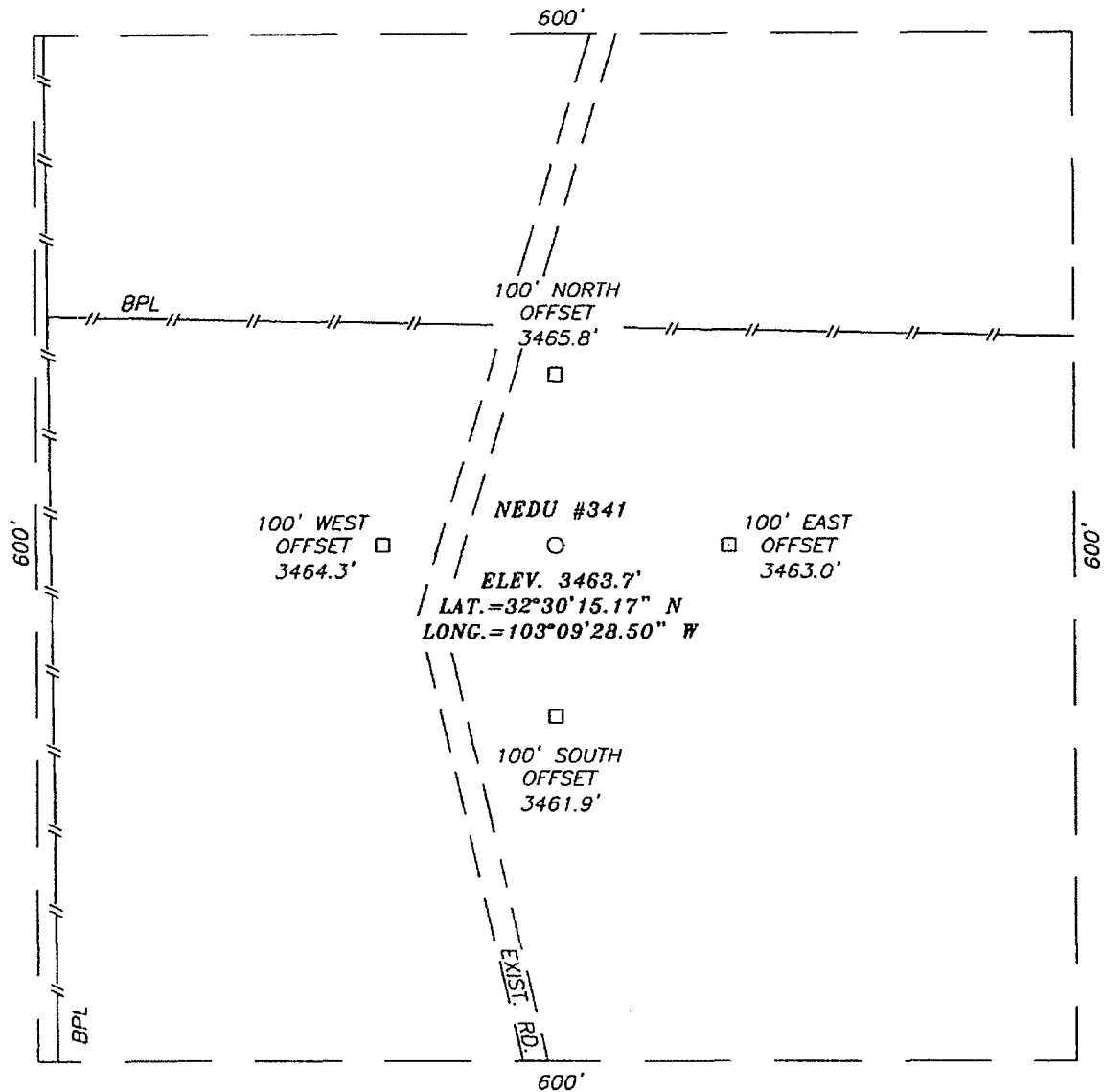
JUNE 06, 2006

Date Surveyed MR
Signature & Seal of
Professional Surveyor

06.11.0899

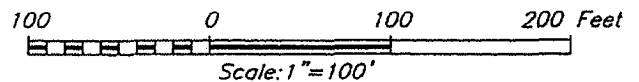
Certificate No. GARY EIDSON 12641
RONALD J. EIDSON 3239

SECTION 3, TOWNSHIP 21 SOUTH, RANGE 37 EAST, N.M.P.M.,
 LEA COUNTY, NEW MEXICO



DIRECTIONS TO LOCATION

FROM THE INTERSECTION OF ST. HWY. #18 AND ST. HWY. 207, GO SOUTHWEST ON ST. HWY. 207 APPROX. 2.1 MILES. TURN RIGHT (THROUGH CATTLE GUARD), AND GO NORTHWEST APPROX. 0.1 MILE. TURN LEFT AND GO WEST APPROX. 0.4 MILES. TURN RIGHT ON TRAIL ROAD AND GO NORTH APPROX. 0.1 MILES. THIS LOCATION IS APPROX. 60 FEET EAST.



APACHE CORPORATION

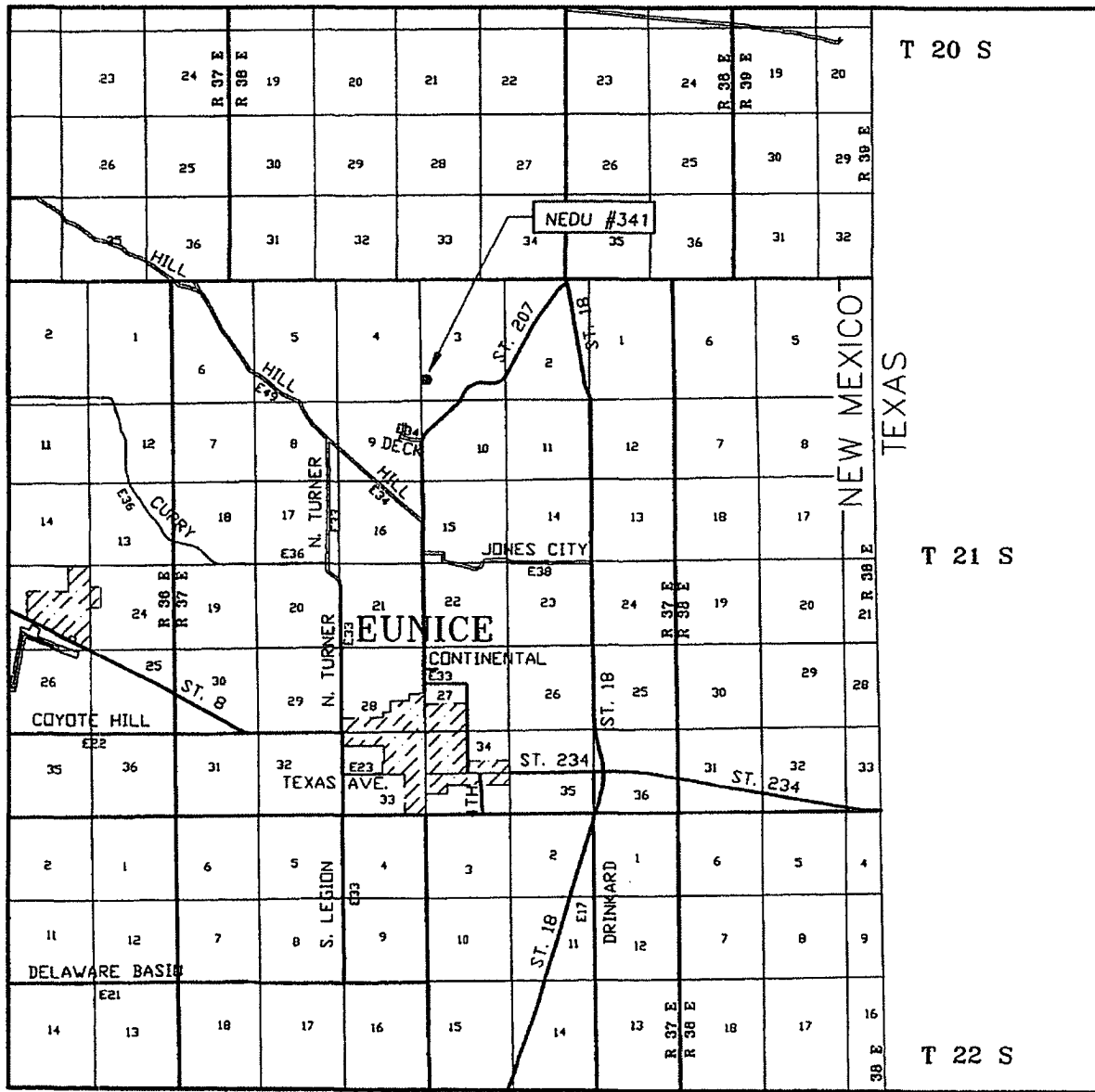
NEDU #341
 LOCATED 1330 FEET FROM THE SOUTH LINE
 AND 330 FEET FROM THE WEST LINE OF SECTION 3,
 TOWNSHIP 21 SOUTH, RANGE 37 EAST, N.M.P.M.,
 LEA COUNTY, NEW MEXICO.

Survey Date: 06/06/06	Sheet 1 of 1 Sheets
W.O. Number: 06.11.0899	Dr By: M.R. Rev 1:N/A
Date: 06/09/06	Disk: CD#6 06110899 Scale: 1"=100'



PROVIDING SURVEYING SERVICES
 SINCE 1946
JOHN WEST SURVEYING COMPANY
 412 N. DAL PASO
 HOBBS, N.M. 88240
 (505) 393-3117

VICINITY MAP



SCALE: 1" = 2 MILES

SEC. 3 TWP. 21-S RGE. 37-E

SURVEY N.M.P.M.

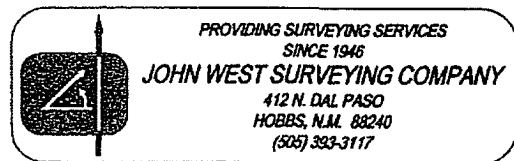
COUNTY LEA STATE NEW MEXICO

DESCRIPTION 1330' FSL & 330' FWL

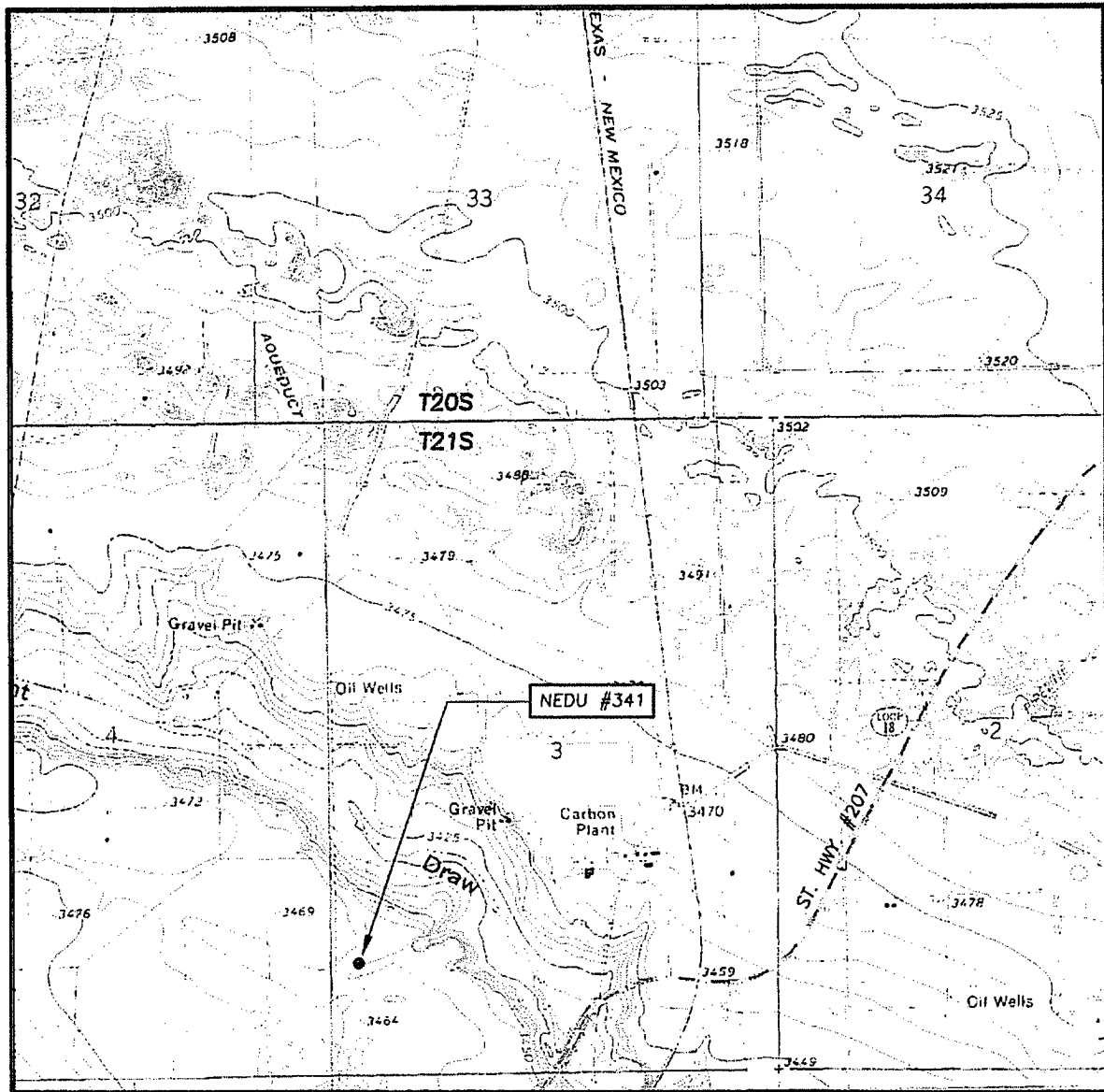
ELEVATION 3464'

OPERATOR _____ APACHE CORPORATION

LEASE _____ NEDU _____



LOCATION VERIFICATION MAP



SCALE: 1" = 2000'

CONTOUR INTERVAL:
HOBBS SW, N.M. - 5'

SEC. 3 TWP. 21-S RGE. 37-E

SURVEY N.M.P.M.

COUNTY LEA STATE NEW MEXICO

DESCRIPTION 1330' FSL & 330' FWL

ELEVATION 3464'

OPERATOR APACHE CORPORATION

LEASE NEDU

U.S.G.S. TOPOGRAPHIC MAP
HOBBS SW, N.M.

