

OCD-ARTESIA

K-06-62

UNITED STATES
DEPARTMENT OF THE INTERIOR
BUREAU OF LAND MANAGEMENT

APPLICATION FOR PERMIT TO DRILL OR REENTER

FORM APPROVED
OMB No. 1004-0136
Expires January 31, 2004

5. Lease Serial No.
NMLC-065680

6. If Indian, Allottee or Tribe Name

7. If Unit or CA Agreement, Name and No.

8. Lease Name and Well No. **36057**
Geronimo 23 Federal Com #2

9. API Well No.
30-015-35163

10. Field and Pool, or Exploratory
Tamano; Bone Spring

11. Sec., T., R., M., or Blk. and Survey or Area

Sec 23-T18S-R31E

12. County or Parish
Eddy

13. State
NM

1a. Type of Work: ☒ DRILL ☐ REENTER

1b. Type of Well: ☒ Oil Well ☐ Gas Well ☐ Other ☐ Single Zone ☐ Multiple Zone

2. Name of Operator
Mewbourne Oil Company - 14744

3a. Address
PO Box 5270 Hobbs, NM 88240

3b. Phone No. (include area code)
505-393-5905

4. Location of Well (Report location clearly and in accordance with any State requirements. *)
At surface 660' FSL & 2310' FWL Unit N **CAPTAN CONTROLLED WATER BASIN**
At proposed prod. zone

14. Distance in miles and direction from nearest town or post office*
9 1/2 miles SE of Loco Hills, NM

15. Distance from proposed*
location to nearest
property or lease line, ft.
(Also to nearest drig. unit line, if any) 660'

16. No. of Acres in lease
160

17. Spacing Unit dedicated to this well
40

18. Distance from proposed location*
to nearest well, drilling, completed,
applied for, on this lease, ft.
800'

19. Proposed Depth
9400'

20. BLM/BIA Bond No. on file
NM1693, Nationwide

21. Elevations (Show whether DF, KDB, RT, GL, etc.)
3655' GL

22. Approximate date work will start*
ASAP

23. Estimated duration
30

24. Attachments

The following, completed in accordance with the requirements of Onshore Oil and Gas Order No.1, shall be attached to this form:

1. Well plat certified by a registered surveyor.
2. A Drilling Plan.
3. A Surface Use Plan (if the location is on National Forest System Lands, the SUPO shall be filed with the appropriate Forest Service Office).

4. Bond to cover the operations unless covered by an existing bond on file (see Item 20 above).
5. Operator certification.
6. Such other site specific information and/or plans as may be required by the authorized officer.

25. Signature **Kristi Green**

Name (Printed/Typed)
Kristi Green

Date
08/24/06

Title

Hobbs Regulatory

Approved by (Signature)

/s/ Tony J. Herrell
FIELD MANAGER

Name (Printed/Typed)

/s/ Tony J. Herrell

Date

SEP 25 2006

Title

Office

CARLSBAD FIELD OFFICE

Application approval does not warrant or certify that the applicant holds legal or equitable title to those rights in the surface and subsurface which would entitle the applicant to conduct operations thereon.

Conditions of approval, if any, are attached.

Title 18 U.S.C. Section 1001 and Title 43 U.S.C. Section 1212, make it a crime for any person knowingly and willfully to make to any department or agency of the United States any false, fictitious or fraudulent statements or representations as to any matter within its jurisdiction.

*(Instructions on reverse)

APPROVAL SUBJECT TO
GENERAL REQUIREMENTS
AND SPECIAL STIPULATIONS
ATTACHED

If earthen pits are used in
association with the drilling of this
well, an OCD pit permit must be
obtained prior to pit construction.

CEMENT TO COVER ALL
OIL, GAS AND WATER
BEARING ZONES

DISTRICT I
1625 N. French Dr., Hobbs, NM 88240

DISTRICT II
811 South First, Artesia, NM 88210

DISTRICT III
1000 Rio Brazos Rd., Aztec, NM 87410

DISTRICT IV
2040 South Pacheco, Santa Fe, NM 87505

State of New Mexico
Energy, Minerals and Natural Resources Department

Form C-102
Revised March 17, 1999

OIL CONSERVATION DIVISION

2040 South Pacheco
Santa Fe, New Mexico 87504-2088



☐ AMENDED REPORT

WELL LOCATION AND ACREAGE DEDICATION PLAT

API Number	Pool Code 58040	Pool Name Tamano
Property Code	Property Name GERONIMO 23 FEDERAL	Well Number 2
OGRID No. 14744	Operator Name MEWBOURNE OIL COMPANY	Elevation 3655'

Surface Location

UL or lot No.	Section	Township	Range	Lot Idn	Feet from the	North/South line	Feet from the	East/West line	County
N	23	18 S	31 E		660'	SOUTH	2310'	WEST	EDDY

Bottom Hole Location If Different From Surface

UL or lot No.	Section	Township	Range	Lot Idn	Feet from the	North/South line	Feet from the	East/West line	County

Dedicated Acres 40	Joint or Infill	Consolidation Code	Order No.
------------------------------	-----------------	--------------------	-----------

NO ALLOWABLE WILL BE ASSIGNED TO THIS COMPLETION UNTIL ALL INTERESTS HAVE BEEN CONSOLIDATED
OR A NON-STANDARD UNIT HAS BEEN APPROVED BY THE DIVISION

<p>MOC. • Geronimo 23 Fed #1</p> <p>Sider's • Panco Fed #1 (P+A)</p> <p>Lat.: N32°43'38.9" Long.: W103°50'26.6" N.: 628712.603 E.: 651499.152 (NAD-27)</p> <p>Ray Westall • Koehne Fed #3</p> <p>2310'</p> <p>3659.5'</p> <p>3659.5'</p> <p>3657.2'</p> <p>3656.0'</p> <p>NMLC 065080</p>	<p>OPERATOR CERTIFICATION</p> <p>I hereby certify the the information contained herein is true and complete to the best of my knowledge and belief.</p> <p><i>Kristi Green</i></p> <p>Signature</p> <p>Kristi Green</p> <p>Printed Name</p> <p>Hobbs Regulatory</p> <p>Title</p> <p>08/24/06</p> <p>Date</p>
	<p>SURVEYOR CERTIFICATION</p> <p>I hereby certify that the well location shown on this plat was plotted from field notes of actual surveys made by me or under my supervision and that the same is true and correct to the best of my belief.</p> <p>APRIL 17, 2006</p> <p>Date Surveyed</p> <p><i>Gary L. Jones</i></p> <p>Signature & Seal of Professional Surveyor</p> <p>7977</p> <p>No. 6494</p> <p>Certificate No. Gary L. Jones 7977</p> <p>BASIN SURVEYS</p>

MULTI-POINT SURFACE USE AND OPERATIONS PLAN

MEWBOURNE OIL COMPANY

**Mewbourne Oil Company
Geronimo 23 Federal Com #2
660' FSL & 2310' FWL
Sec 23-T18S-R31E
Eddy County, New Mexico**

This plan is submitted with Form 3160-3, Application for Permit to Drill, Covering the above described well. The purpose of this plan is to describe the location of the proposed well, the proposed construction activities and operations plan, the magnitude of the surface disturbance involved, and the procedures to be followed in restoring the surface so that a complete appraisal can be made of the environmental impact associated with the proposed operations.

1. Existing Roads:

- A. Exhibit #3 is a road map showing the location of the proposed well (existing roads are highlighted in black). Exhibit #3A is a topographic map showing the location of the proposed well and access road (existing road is highlighted in black).
- B. **Directions to location from Loco Hills: Go 6 miles east on Hwy 82. Turn right on CR222 (Shugart Rd) & continue south 4.2 miles. Turn left on CR249 (Westall Rd) & continue SE 3.2 miles. Turn left into location.**

2. Proposed Access Road:

- A. No new road will be needed.
- B. The access to the location will be limited to 16' in width and will adequately drain runoff and control erosion as presently constructed.

3. Location of Existing Wells:

There are producing wells within the immediate vicinity of this well site shown on Exhibit 4.

4. Location of Existing and/or Proposed Facilities:

- A. There are no production facilities on this lease at the present time.
- B. In the event that the well is productive, production facilities will be located on the well pad.
- C. All production vessels left on location will be painted to conform with BLM painting stipulations within 180 days of installation.

5. Location and Type of Water Supply

The well will be drilled with a combination of fresh water and brine water based mud systems. The water will be obtained from commercial suppliers in the area and/or hauled to the location by transport trucks over existing and proposed roads as indicated in Exhibit #3.

6. Source of Construction Materials

All material required for construction of the drill pad and access roads will be obtained from private, state, or federal pits. The construction contractor will be solely responsible for securing construction materials required for this operation and paying any royalties that may be required on those materials.

7. Methods of Handling Waste Disposal:

- A. Drill cuttings not retained for evaluation purposed will be disposed of in the reserve pit.
- B. Drilling fluids will be allowed to evaporate in the reserve pit prior to closure.
- C. Water produced during operations will be disposed of in the reserve pit.
- D. If any liquid hydrocarbons are produced during operations, those liquids will be stored in suitable tanks until sold.
- E. Current regulations regarding the proper disposal of human waste will be followed.
- F. All trash, junk, and other waste materials will be stored in proper containers to prevent dispersal and will be removed to an appropriate facility within one week of cessation of drilling and completion activities.

8. Ancillary Facilities

There are no ancillary facilities within the immediate vicinity of the proposed well site.

9. Well Site Layout

- A. A diagram of the drill pad is shown in Exhibit #5. Dimensions of the pad, pits, and location of major rig components are shown.
- B. The reserve pit will be lined with a high quality plastic sheeting to prevent migration of fluids.
- C. The pad dimension of 400' X 250' has been staked and flagged.
- D. An archaeological survey has been conducted on the proposed access road and location pad.

10. Plans for Restoration of Surface

- A. Upon cessation of the proposed operations, if the well is abandoned, the location and road will be ripped and re-seeded. The reserve pit area, after allowing to dry will be leveled. The entire location will be restored to the original contour as much as reasonable possible. All trash, garbage, and pit lining will be hauled to appropriate disposal to assure the location is aesthetically pleasing as reasonable possible. All restoration work will be completed within 180 days of cessation of activities.
- B. The disturbed area will be restored by re-seeding during the proper growing season.
- C. Three sides of the reserve pit will be fenced prior to and during drilling operations. The reserve pit will be fenced on the fourth side after the drilling rig is removed to prevent the endangerment of livestock. The fence will remain in place until the pit area has been leveled and restored.

- D. Upon cessation of the proposed operations, if the well is not abandoned, the reserve pit area will be restored as per BLM/OCD guidelines. Any additional caliche required for production facilities will be obtained from a source as described in Section 6.
- E. Within 90 days of cessation of drilling and completion operations, all equipment not necessary for production operations will be removed. The location will be cleaned of all trash and junk to assure the well site is left as aesthetically pleasing as reasonably possible.

11. Surface Ownership:

The surface is owned by: ~~USA~~ located entirely on Federal Surface. *per E-Mail from Kristi Decm. 05-06*

12. Other Information:

- A. Topography: Refer to the archaeological report for a detailed description of flora, fauna, soil characteristics, dwellings, and historical or cultural sites.
- B. The primary use of the surface at the location is for grazing of livestock.

13. Operator's Representative:

- A. Through APD approval, drilling, completion and production operations:

N.M. Young, District Manager
Mewbourne Oil Company
PO Box 5270
Hobbs, NM 88241
505-393-5905

14. Certification

I hereby certify that I, or persons under my direct supervision, have inspected the proposed drill site and access route; that I am familiar with the conditions which currently exist; that the statements made in this plan are to the best of my knowledge, true and correct; and the work associated with the operations proposed herein will be performed by Mewbourne Oil Company, its contractors and subcontractors, in accordance with this plan and the terms and conditions under which it is approved. This statement is subject to the provisions of 18 U.S.C. 1001 for the filing of a false statement.

Date: 08/24/06

Signature: *Kristi Green for NM Young*

N.M. Young, District Manager
Mewbourne Oil Company
PO Box 5270
Hobbs, NM 88241
(505) 393-5905

Drilling Program
Mewbourne Oil Company
Mewbourne Oil Company
Geronimo 23 Federal Com #2
660' FSL & 2310' FWL
Sec 23-T18S-R31E
Eddy County, New Mexico

1. The estimated top of geological markers are as follows:

Rustler	715'
Salado	1120'
Yates	2180'
Seven Rivers	2895'
Queen	3360'
Penrose	3620'
Delaware	4805'
Bone Spring	6060'

2. Estimated depths of anticipated fresh water, oil, or gas:

Water	NA
Hydrocarbons	All zones below Delaware

3. Pressure control equipment:

A 2000 psi working pressure annular BOP will be installed on the 13 3/8" surface casing. A 3000 psi WP Double Ram BOP and a 3000 psi WP Annular will be installed after running 8 5/8" casing. Pressure tests will be conducted prior to drilling out under all casing strings. BOP controls will be installed prior to drilling under surface casing and will remain in use until completion of drilling operations. BOP's will be inspected and operated as recommended in Onshore Order #2 to insure mechanical integrity and the inspection will be recorded on the daily drilling report. Kelly cock and a sub equipped with a full opening valve sized to fit the drill pipe and collars will be available on the rig floor in the open position when the kelly is not in use.

4. Proposed casing and cementing program:

A. Casing Program:

<u>Hole Size</u>	<u>Casing</u>	<u>Wt/Ft.</u>	<u>Grade</u>	<u>Depth</u>
17 1/2"	13 3/8"	48#	H40	0-500'
12 1/4"	8 5/8"	32#	J55	0-2500'
7 7/8"	5 1/2"	17#	L80 & J55	0-9400'

Minimum casing design factors: Collapse 1.2, Burst 1.1, Tensile strength 2.0.

B. Cementing Program

- i. Surface Casing: 400 sacks Class C light cement with additives. 200 sks Class C cement containing 2% CaCl.
- ii. Intermediate Casing: 700 Class C light cement with additives. 200 sacks Class C cement containing 2% CaCl.
- iii. Production Casing: 1200 sacks Class H cement with additives. Shallower productive zones may be protected by utilizing a multiple stage cementing tool in the production casing below potentially productive zones and cementing with a light cement slurry.

WITNESS

WITNESS

**Mewbourne Oil Company reserves the right to change cement designs as hole conditions may warrant.*

5. Mud Program:

<u>Interval</u>	<u>Type System</u>	<u>Weight</u>	<u>Viscosity</u>	<u>Fluid Loss</u>
0'-500'	FW spud mud	8.6-9.4	32-34	NA
500'-2500'	Brine water	10.0-10.2	28-30	NA
2500'-9400'	Cut brine water	8.8-9.2	28-30	8-12

6. Evaluation Program:

Samples:	10' samples from intermediate casing to TD
Logging:	Compensated density and dual laterlog from intermediate casing to TD
Coring:	As needed for evaluation
Drill Stem Tests:	As needed for evaluation

7. Downhole Conditions

Zones of abnormal pressure:	None anticipated
Zones of lost circulation:	Anticipated in surface and intermediate holes
Maximum bottom hole temperature:	150 degree F
Maximum bottom hole pressure:	8.6 lbs/gal gradient or less

8. Anticipated Starting Date:

Mewbourne Oil Company intends to drill this well as soon as possible after receiving approval with approximately 30 days involved in drilling operations and an additional 10 days involved in completion operations on the project.

Hydrogen Sulfide Drilling Operations Plan

**Mewbourne Oil Company
Mewbourne Oil Company
Geronimo 23 Federal Com #2
660' FSL & 2310' FWL
Sec 23-T18S-R31E
Eddy County, New Mexico**

1. General Requirements

Rule 118 does not apply to this well because MOC has researched this area and no high concentrations of H₂S were found. MOC will have on location and working all H₂S safety equipment before the Yates formation for purposes of safety and insurance requirements.

2. Hydrogen Sulfide Training

All personnel, whether regularly assigned, contracted, or employed on an unscheduled basis, will have received training from a qualified instructor in the following areas prior to entering the drilling pad area of the well:

1. The hazards and characteristics of hydrogen sulfide gas.
2. The proper use of personal protective equipment and life support systems.
3. The proper use of hydrogen sulfide detectors, alarms, warning systems, briefing areas, evacuation procedures.
4. The proper techniques for first aid and rescue operations.

Additionally, supervisory personnel will be trained in the following areas:

- 1 The effects of hydrogen sulfide on metal components. If high tensile tubular systems are utilized, supervisory personnel will be trained in their special maintenance requirements.
- 2 Corrective action and shut in procedures, blowout prevention, and well control procedures while drilling a well.
- 3 The contents of the Hydrogen Sulfide Drilling Operations Plan.

There will be an initial training session prior to encountering a known hydrogen sulfide source. The initial training session shall include a review of the site specific Hydrogen Sulfide Drilling Operations Plan.

3. Hydrogen Sulfide Safety Equipment and Systems

All hydrogen sulfide safety equipment and systems will be installed, tested, and operational prior to drilling below the intermediate casing.

1. Well Control Equipment

- A. Flare line with automatic igniter or continuous ignition source.
- B. Choke manifold with minimum of one adjustable choke.
- C. Blowout preventers equipped with blind rams and pipe rams to accommodate all pipe sizes with properly sized closing unit
- D. Auxiliary equipment including rotating head and annular type blowout preventer.

2. Protective Equipment for Essential Personnel

Thirty minute self contained work unit located at briefing area as indicated on wellsite diagram.

3. Hydrogen Sulfide Protection and Monitoring Equipment

Two portable hydrogen sulfide monitors positioned on location for optimum coverage and detection. The units shall have audible sirens to notify personnel when hydrogen sulfide levels exceed 20 ppm.

4. Visual Warning Systems

A. Wind direction indicators as indicated on the wellsite diagram.

B. Caution signs shall be posted on roads providing access to location. Signs shall be painted a high visibility color with lettering of sufficient size to be readable at reasonable distances from potentially contaminated areas.

4. **Mud Program**

The mud program has been designed to minimize the amount of hydrogen sulfide entrained in the mud system. Proper mud weight, safe drilling practices, and the use of hydrogen sulfide scavengers will minimize hazards while drilling the well.

5. **Metallurgy**

All tubular systems, wellheads, blowout preventers, drilling spools, kill lines, choke manifolds, and valves shall be suitable for service in a hydrogen sulfide environment when chemically treated.

6. **Communications**

State & County Officials phone numbers are posted on rig floor and supervisors trailer. Communications in company vehicles and toolpushers are either two way radios or cellular phones.

7. **Well Testing**

Drill stem testing is not an anticipated requirement for evaluation of this well. A drill stem test is required, it will be conducted with a minimum number of personnel in the immediate vicinity. The test will be conducted during daylight hours only.

United States Department of the Interior
Bureau of Land Management
Roswell Field Office
2909 West Second Street
Roswell, New Mexico 88201-1287

Statement Accepting Responsibility for Operations

Operator Name: Mewbourne Oil Company
Street or Box: P.O. Box 5270
City, State: Hobbs, New Mexico
Zip Code: 88241

The undersigned accepts all applicable terms, conditions, stipulations, and restrictions concerning operations conducted of the leased land or portion thereof, as described below.

Lease Number: Lease Number #NMLC-065680

Legal Description of Land: Unit N of Section 23, T-18S, R-31E Eddy County, New Mexico.
Location @ 660' FSL & 2310' FWL.

Formation (if applicable):

Bond Coverage: \$150,000

BLM Bond File: NM1693, Nationwide

Authorized Signature: *Micky Young for NM Young*

Name: NM (Micky) Young

Title: District Manager

Date: August 24, 2006

Notes Regarding Blowout Preventer

**Mewbourne Oil Company
Mewbourne Oil Company
Geronimo 23 Federal Com #2
660' FSL & 2310' FWL
Sec 23-T18S-R31E
Eddy County, New Mexico**

- I. Drilling nipple (bell nipple) to be constructed so that it can be removed without the use of a welder through the opening of the rotary table, with minimum internal diameter equal to blowout preventer bore.
- II. Blowout preventer and all fittings must be in good condition with a minimum 3000 psi working pressure.
- III. Safety valve must be available on the rig floor at all times with proper connections to install in the drill string. Valve must be full bore with minimum 3000 psi working pressure.
- IV. Equipment through which bit must pass shall be at least as large as internal diameter of the casing.
- V. A kelly cock shall be installed on the kelly at all times.

Blowout preventer closing equipment to include and accumulator of at least 40 gallon capacity, two independent sources of pressure on closing unit, and meet all other API specifications.

Mewbourne Oil Company
BOP Scematic for
12 1/4" Hole

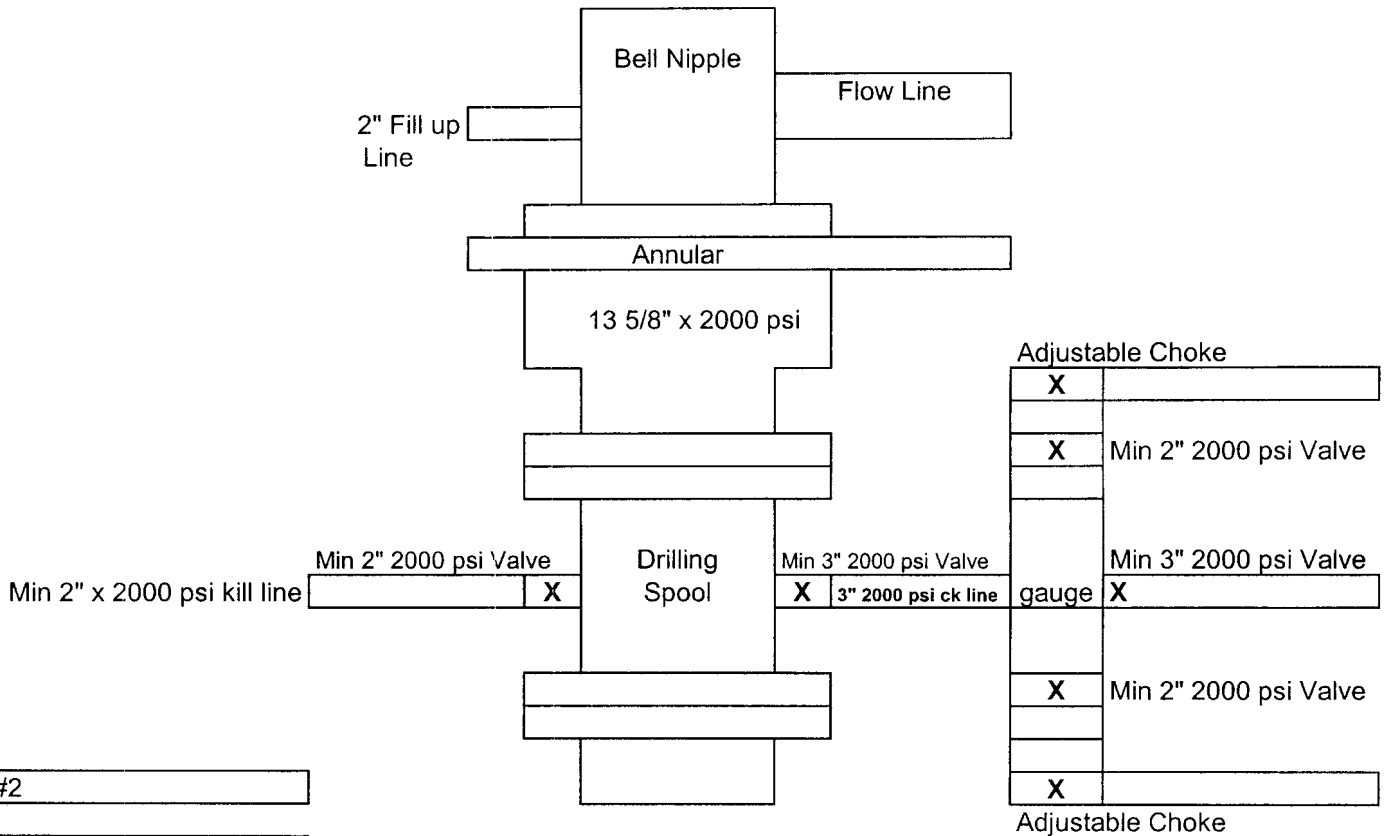


Exhibit #2

Geronimo 23 Federal Com #2
660' FSL & 2310' FWL
Sec 23-T18S-R31E
Eddy County, NM

Mewbourne Oil Company
BOP Schematic for
8 3/4" or 7 7/8" Hole

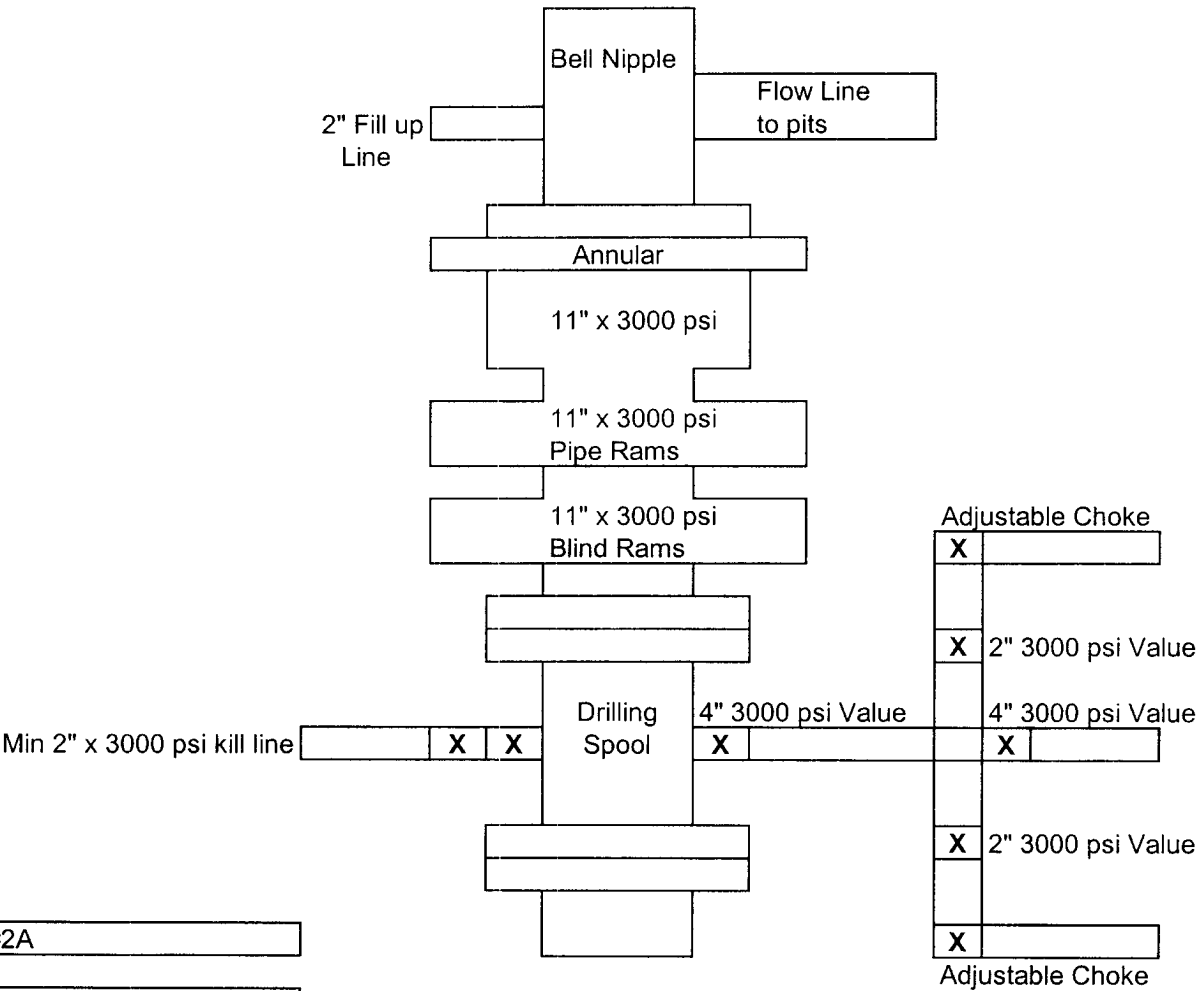


Exhibit #2A

Geronimo 23 Federal Com #2
660' FSL & 2310' FWL
Sec 23-T18S-R31E
Eddy County, NM

SECTION 23, TOWNSHIP 18 SOUTH, RANGE 31 EAST, N.M.P.M.,
EDDY COUNTY, NEW MEXICO.

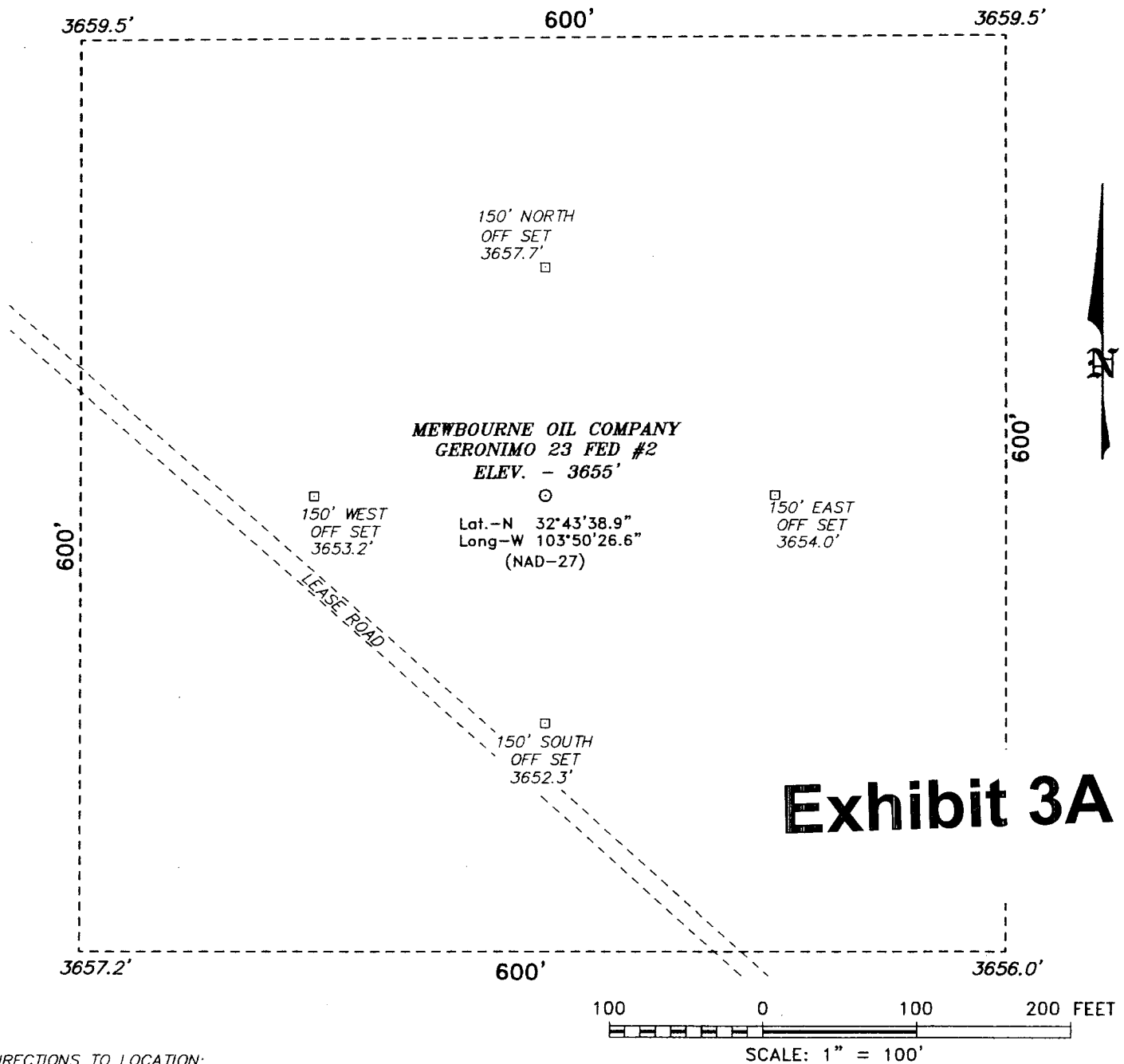


Exhibit 3A

DIRECTIONS TO LOCATION:

FROM THE JUNCTION OF HWY U.S. 82 AND C.R. 222 (SHUGART), GO SOUTH TO THE JUNCTION OF C.R. 222 AND C.R. 249 (WESTALL), CONTINUE SOUTHEAST FOR APPROX 2.7 MILES TO AN EXISTING LEASE ROAD, ON LEASE ROAD PROCEED SOUTHEAST 5000 FEET TO LEASE ROAD TO PROPOSED LOCATION.

BASIN SURVEYS P.O. BOX 1786 - HOBBS, NEW MEXICO

W.O. Number: 6494 Drawn By: J. SMALL

Date: 04-17-2006 Disk: JMS 6494A

MEWBOURNE OIL COMPANY

REF: GERONIMO 23 FED #2 / Well Pad Topo

THE GERONIMO 23 FED #2 LOCATED 660'

FROM THE SOUTH LINE AND 2310' FROM THE WEST LINE OF
SECTION 23, TOWNSHIP 18 SOUTH, RANGE 31 EAST,
N.M.P.M., EDDY COUNTY, NEW MEXICO.

Survey Date: 04-13-2006 Sheet 1 of 1 Sheets

Exhibit #4
Status of Wells in Immediate Vicinity
Mewbourne Oil Company
Geronimo 23 Federal Com #2
660' FSL & 2310' FWL
Sec 23-T18S-R31E
Eddy County, New Mexico

Section 23-T18S-R31E

Operator: Mewbourne Oil Company
Well Name: Geronimo 23 Federal Com #1
Unit letter: D
Status: Producing
Field: Bone Spring

Operator: Ray Westall
Well Name: Keohane Federal #3
Unit letter: N
Status: Pumping
Field: Shugart Queen

Operator: Ray Westall
Well Name: Keohane Federal #2
Unit letter: M
Status: Pumping
Field: Shugart Queen Grayburg

SPECIAL DRILLING STIPULATIONS

THE FOLLOWING DATA IS REQUIRED ON THE WELL SIGN

Operator's Name: Mewbourne Oil Company Well Name & #: Geronimo 23 Federal Com #2
Location: 660' F S L & 2310' F W L Sec. 23, T. 18 S., R. 31 E.
Lease: NMLC-065680 County: EDDY State: New Mexico

The Special stipulations check marked below are applicable to the above described well and approval of this application to drill is conditioned upon compliance with such stipulations in addition to the General Requirements. The permittee should be familiar with the General Requirements, a copy of which is available from a Bureau of Land Management office. EACH PERMITTEE HAS THE RIGHT OF ADMINISTRATIVE APPEAL TO THESE STIPULATIONS PURSUANT TO TITLE 43 CRF 3165.3 AND 3165.4.

This permit is valid for a period of one year from the date of approval or until lease expiration or termination whichever is shorter.

I. SPECIAL ENVIRONMENT REQUIREMENTS

- (X) Lesser Prairie Chicken (stips attached) () Flood plain (stips attached)
() San Simon Swale (stips attached) () Other

II. ON LEASE - SURFACE REQUIREMENTS PRIOR TO DRILLING

(X) The BLM will monitor construction of this drill site. Notify the (X) Carlsbad Field Office at (505) 234-5972 () Hobbs Office (505) 393-3612, at least 3 working days prior to commencing construction.

(X) Roads and the drill pad for this well must be surfaced with 6 inches of compacted caliche.

() All topsoil and vegetation encountered during the construction of the drill site area will be stockpiled and made available for resurfacing of the disturbed area after completion of the drilling operation. Topsoil on the subject location is approximately _____ inches in depth. Approximately _____ cubic yards of topsoil material will be stockpiled for reclamation.

(X) Other: **Pits North V-Door East**

III. WELL COMPLETION REQUIREMENTS

() A Communitization Agreement covering the acreage dedicated to the well must be filed for approval with the BLM. The effective date of the agreement must be prior to any sales.

(X) Surface Restoration: If the well is a producer, the reserve pit(s) will be backfilled when dry, and cut-and-fill slopes will be reduced to a slope of 3:1 or less. All areas of the pad not necessary for production must be re-contoured to resemble the original contours of the surrounding terrain, and topsoil must be re-distributed and re-seeded with a drill equipped with a depth indicator (set at depth of ½ inch) with the following seed mixture, in pounds of Pure Live Seed (PLS), per acre. Seeding should be done either late in the fall (September 15 - November 15, before freeze up, or early as possible the following spring to take advantage of available ground moisture. **See attached seed mixture.**

- () A. Seed Mixture 1 (Loamy Sites)
Side Oats Grama (*Bouteloua curtipendula*) 5.0
Sand Dropseed (*Sporobolus cryptandrus*) 1.0
Plains lovegrass (*Eragrostis intermedia*) 0.5

- () B. Seed Mixture 2 (Sandy Sites)
Sand Dropseed (*Sporobolus crptandrus*) 1.0
Sand Lovegrass (*Eragrostis trichodes*) 1.0
Plains Bristlegrass (*Setaria magrostachya*) 2.0

- () C. Seed Mixture 3 (Shallow Sites)
Side oats Grama (*Bouteloua curtipendula*) 5.0
Green Spangletop (*Leptochloa dubia*) 2.0
Plains Bristlegrass (*Setaria magrostachya*) 1.0

- () D. Seed Mixture 4 (Gypsum Sites)
Alkali Sacaton (*Sporobolus airoides*) 1.0
Four-Wing Saltbush (*Atriplex canescens*) 5.0

(x) OTHER Lesser Prairie Chicken Seed Mix

RESERVE PIT CONSTRUCTION STANDARDS

The reserve pit shall be constructed entirely in cut material and lined with 6-mil plastic. Mineral material extracted from within the boundary of the APD during construction of the well pad and reserve pits and be used for the construction of this well pad and its immediate access road only, as long as that portion of the access road it is use on remains on-lease. Removal of any additional material from this location for construction or improvement of other well pads and other access or lease roads must first be purchased from BLM.

Reclamation: Reclamation of this type of deep pit will consist of pushing the pit walls into the pit when sufficiently dry to support track equipment. The pit liner is NOT TO BE RUPTURED to facilitate drying; a ten month period after completion of the well is allowed for drying of the pit contents.

The pit area must be contoured to the natural terrain with all contaminated drilling mud buried with at least 3 feet of clean soil. The reclaimed area will then be seeded as specified in this permit.

OPTIONAL PIT CONSTRUCTION STANDARDS

The reserve pit may be constructed in predominantly fill material if:

- (1) Lined as specified above and
- (2) A temporary or emergency pit may be constructed immediately adjacent to the reserve pit as long as the pit remains within the APD boundary. Mineral material removed from this pit may be used for the construction of this well pad only and its immediate access road, as long as that portion of the access road the material is used on remains on-lease. Removal of any material from the APD boundary for use on other well locations or roads must first be purchased from BLM.

Reclamation of the reserve pit consists of bulldozing all reserve pit contents and contaminants into the borrow pit and covering with a minimum of 3 feet of clean soil material. The entire area must be re-contoured, all trash removed, and reseeded as specified in this permit.

CULTURAL

Whether or not an archaeological survey has been completed and notwithstanding that operations are being conducted as approved, the lessee/operator/grantee shall notify the BLM immediately if previously unidentified cultural resources are observed during surface disturbing operations. From the time of the observation, the lessee/operator/grantee shall avoid operations that will result in disturbance to these cultural resources until directed to process by BLM.

TRASH PIT STIPS

All trash, junk, and other waste material shall be contained in trash cages or bins to prevent scattering and will be removed and deposited in an approved sanitary landfill. Burial on site is not permitted.

PRAIRIE CHICKENS

No surface use is allowed during the following time periods; unless otherwise specified, this stipulation does not apply to operation and maintenance of production facilities.

On the lands described below: All of section 23, Township 18 South, Range 31 East

For the purpose of: Protecting Prairie Chickens:

Drilling for oil and gas, and 3-D geophysical exploration operations will not be allowed in Lesser Prairie Chicken Habitat during the period of March 15 through June 15, each year. During that period, other activities that produce noise or involve human activity, such as the maintenance of oil and gas facilities, geophysical exploration other than 3-D operations, and pipeline, road, and well pad construction, will be allowed except between 3:00 a.m. and 9:00 a.m. The 3:00 a.m. and 9:00 a.m. restriction will not apply to normal, around-the-clock operations, such as venting, flaring, or pumping, which do not require a human presence during the period. Additionally, no new drilling will be allowed within up to 200 meters of leks known at the time of permitting. Normal vehicle use on existing roads will not be restricted. Exhaust noise from pump jack engines must be muffled or otherwise controlled so as not to exceed 75 db measured at 30 feet from the source of the noise.

CONDITIONS OF APPROVAL - DRILLING

Operator's Name: Mewbourne Oil Company
Well Name & No: Geronimo 23 Fed Com No 02
Location: Surface 660' FSL & 2310' FWL, Sec.23, T. 18 S., R. 31 E.
Lease: NMLC 065680
Eddy County, New Mexico

.....

I. DRILLING OPERATIONS REQUIREMENTS:

1. The Bureau of Land Management (BLM) is to be notified at the Roswell Field Office, 2909 West Second St., Roswell, NM 88201, (505) 627-0272 for wells in Chaves and Roosevelt Counties; the Carlsbad Field Office, 620 East Greene St., Carlsbad, NM 88220, (505) 361-2822 for wells in Eddy County; and the Hobbs Field Station, 414 West Taylor, Hobbs NM 88240, (505) 393-3612 for wells in Lea County, in sufficient time for a representative to witness:
 - A. Spudding
 - B. Cementing casing: 13 3/8 inch; 8 5/8 inch; 5 1/2 inch.
 - C. BOP Tests
2. A Hydrogen Sulfide (H2S) Drilling Plan shall be in operations 500 feet or three days prior to drilling into the Top of the Queen formation estimated to be at 3294 ft.
3. Unless the production casing has been run and cemented or the well has been properly plugged, the drilling rig shall not be removed from over the hole without prior approval.
4. Submit a Sundry Notice (Form 3160-5, one original and five copies) for each casing string, describing the casing and cementing operations. Include pertinent information such as; spud date, hole size, casing (size, weight, grade and thread type), cement (type, quantity and top), water zones and problems or hazards encountered. The Sundry shall be submitted within 15 days of completion of each casing string. The reports may be combined into the same Sundry if they fall within the same 15 day time frame.
5. The API No. assigned to the well by NMOCD shall be included on the subsequent report of setting the first casing string.

II. CASING:

1. The 13 3/8 inch shall be set at 800 Feet, 25 ft into the top of the Rustler Anhydrite or use the Lea County Conditions of Approval (attached) with cement circulated to the surface. If cement does not circulate to the surface the appropriate BLM office shall be notified and a temperature survey or cement bond log shall be run to verify the top of the cement. Remedial cementing shall be completed prior to drilling out that string.
2. The minimum required fill of cement behind the 8 5/8 inch Intermediate casing is to circulate to surface.
3. The minimum required fill of cement behind the 5 1/2 inch Production casing is to is to cover any potential hydrocarbon bearing formations by at least 200 feet.

III. PRESSURE CONTROL:

1. All BOP systems and related equipment shall comply with well control requirements as described in Onshore Oil and Gas Order No. 2. The BOP and related equipment shall be installed and operational before drilling below the 13 3/8 inch casing shoe and shall be tested as described in Onshore Order No. 2. Any equipment failing to test satisfactorily shall be repaired or replaced.

(III Cont):

2. Minimum working pressure of the blowout preventer and related equipment (BOPE) shall be 2 M psi.

3. The appropriate BLM office shall be notified in sufficient time for a representative to witness the test.

- The test shall be done by an independent service company
- The results of the test shall be reported to the appropriate BLM office.
- Testing fluid must be water or an appropriate clear liquid suitable for sub-freezing temperatures.
- Use of drilling mud for testing is not permitted since it can mask small leaks.
- Testing must be done in safe workman-like manner. Hard line connections shall be required.
- Both low pressure and high pressure testing of BOPE is required.

G. Gourley RFO 09/15/2006