

DISTRICT I  
1625 N. FRENCH DR., BOBES, NM 88240

DISTRICT II  
1301 W. GRAND AVENUE, ARTESIA, NM 88210

DISTRICT III  
1000 Rio Brazos Rd., Aztec, NM 87410

DISTRICT IV  
1220 S. ST. FRANCIS DR., SANTA FE, NM 87505

State of New Mexico  
Energy, Minerals and Natural Resources Department

OIL CONSERVATION DIVISION  
1220 SOUTH ST. FRANCIS DR.  
Santa Fe, New Mexico 87505

Form C-102  
Revised October 12, 2005  
Submit to Appropriate District Office  
State Lease - 4 Copies  
Fee Lease - 3 Copies

WELL LOCATION AND ACREAGE DEDICATION PLAT

☐ AMENDED REPORT

API Number 30-025-38526	Pool Code 22900	Pool Name Sunnee; Bli-Tu-Dr, North
Property Code 22503	Property Name NEDU	Well Number 241
OGRID No. 873	Operator Name APACHE CORPORATION	Elevation 3432'

Surface Location 3700' FNL

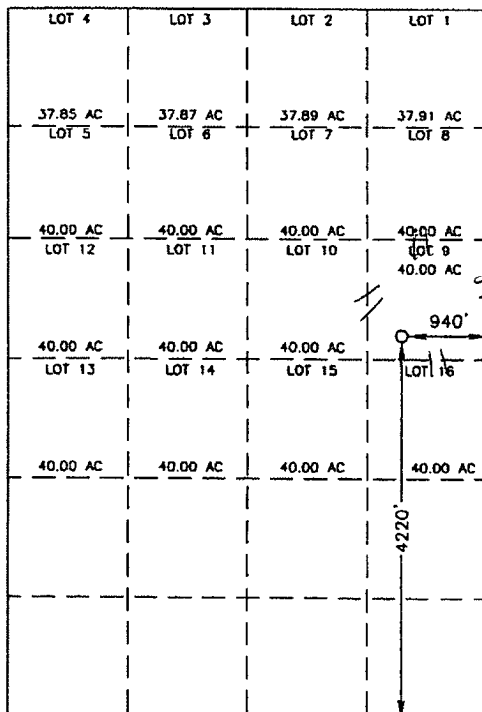
UL or lot No.	Section	Township	Range	Lot Idn	Feet from the	North/South line	Feet from the	East/West line	County
9	4	21-S	37-E		4220	SOUTH	940	EAST	LEA

Bottom Hole Location If Different From Surface

UL or lot No.	Section	Township	Range	Lot Idn	Feet from the	North/South line	Feet from the	East/West line	County

Dedicated Acres	Joint or Infill	Consolidation Code	Order No.
40			

NO ALLOWABLE WILL BE ASSIGNED TO THIS COMPLETION UNTIL ALL INTERESTS HAVE BEEN CONSOLIDATED  
OR A NON-STANDARD UNIT HAS BEEN APPROVED BY THE DIVISION



GEODETIC COORDINATES  
NAD 27 NME

Y=552020.0 N  
X=861072.6 E

LAT.=32.512159' N  
LONG.=103.162040' W

LAT.=32°30'43.77" N  
LONG.=103°09'43.34" W

2000 0 2000 4000 Feet  
Scale: 1"=2000'

OPERATOR CERTIFICATION

I hereby certify that the information herein is true and complete to the best of my knowledge and belief, and that this organization either owns a working interest or unleased mineral interest in the land including the proposed bottom hole location or has a right to drill this well at this location pursuant to a contract with an owner of such mineral or working interest, or to a voluntary pooling agreement or a compulsory pooling order heretofore entered by the division.

Signature: Lana L. Williams  
Date: 10/17  
Printed Name: Lana L. Williams

SURVEYOR CERTIFICATION

I hereby certify that the well location shown on this plat was plotted from field notes of actual surveys made by me or under my supervision, and that the same is true and correct to the best of my belief.

JUNE 24, 2006

Date Surveyed: 6/16/06 MR  
Signature & Seal of Professional Surveyor

GARY EIDSON 7/6/06  
06.11.0977

Certificate No. GARY EIDSON 12841  
RONALD E. EIDSON 3239

LOT 4	LOT 3	LOT 2	LOT 1
37.85 AC LOT 5	37.87 AC LOT 6	37.89 AC LOT 7	37.91 AC LOT 8
40.00 AC LOT 12	40.00 AC LOT 11	40.00 AC LOT 10	40.00 AC LOT 9 40.00 AC
40.00 AC LOT 13	40.00 AC LOT 14	40.00 AC LOT 15	<div style="text-align: center;"> </div>
40.00 AC	40.00 AC	40.00 AC	LOT 16 40.00 AC

SECTION 4

SECTION 3

Scale: 1" = 2000'

### OPERATOR CERTIFICATION

I hereby certify that the information herein is true and complete to the best of my knowledge and belief, and that this organization either owns a working interest or unleased mineral interest in the land including the proposed bottom hole location or has a right to drill this well at this location pursuant to a contract with an owner of such mineral or working interest, or to a voluntary pooling agreement or a compulsory pooling order heretofore entered by the division.

*Lana L. Williams*

Signature

10/17/06

Date

Lana L. Williams

Printed Name

### SURVEYOR CERTIFICATION

I hereby certify that the well location shown on this plat was plotted from field notes of actual surveys made by me or under my supervision, and that the same is true and correct to the best of my belief.

JUNE 24, 2006

Date Surveyed

Signature & Seal of Professional Surveyor

MR

06.11.0977

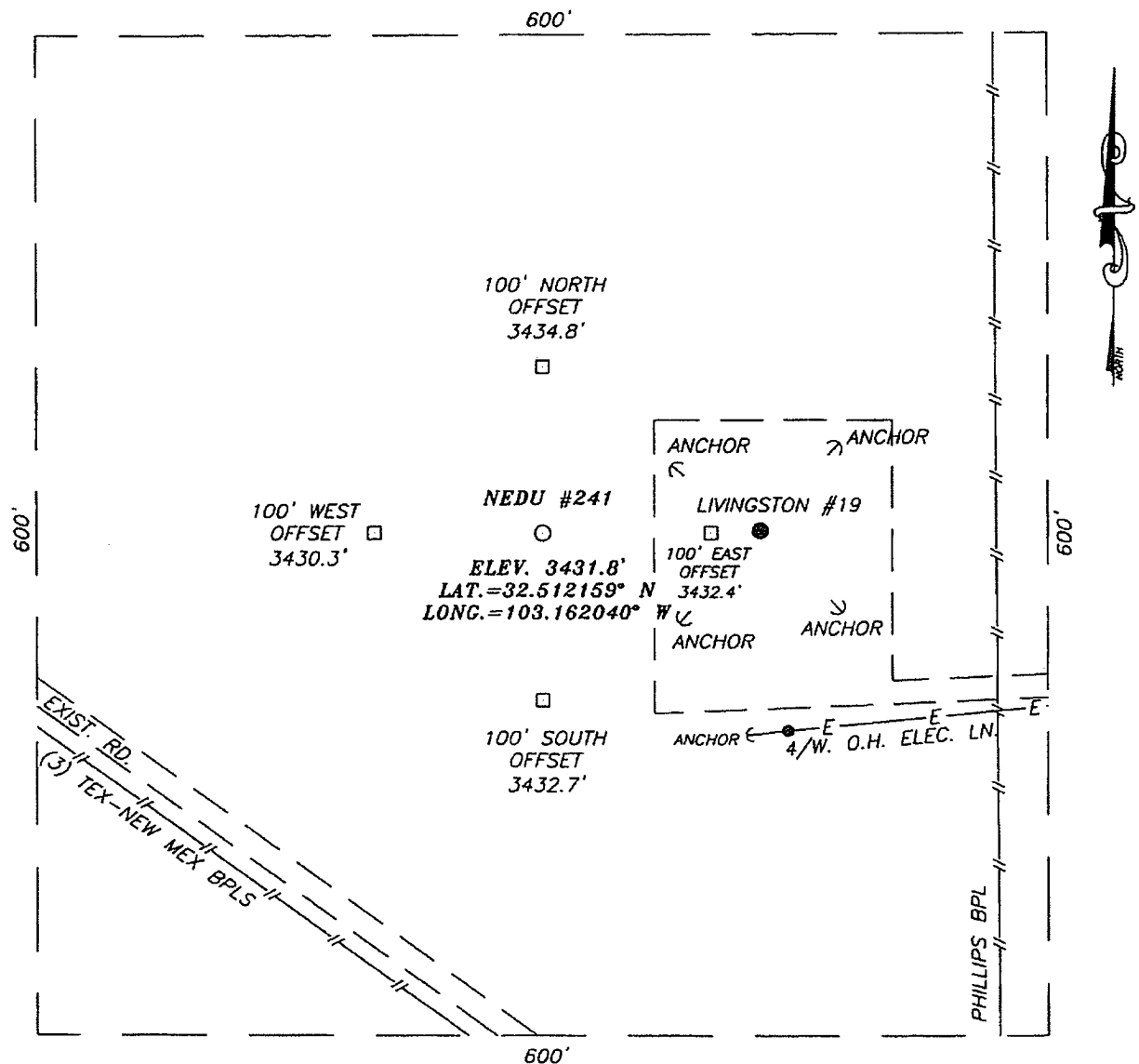
Certificate No. GARY EIDSON

RONALD J. EIDSON

12041

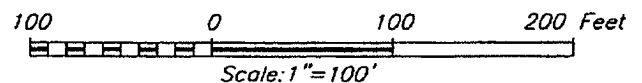
3239

**SECTION 4, TOWNSHIP 21 SOUTH, RANGE 37 EAST, N.M.P.M.,**  
LEA COUNTY, NEW MEXICO



**DIRECTIONS TO LOCATION**

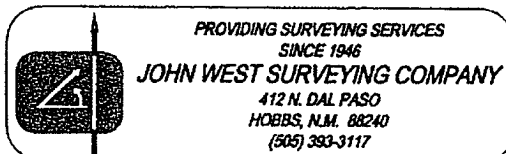
FROM THE INTERSECTION OF ST. HWY. #18 AND ST. HWY. #207, GO SOUTHWEST ON ST. HWY. #207 APPROX. 1.9 MILES. TURN RIGHT (THROUGH CATTLE GUARD) AND GO NORTH-NORTHWEST APPROX. 0.9 MILES. TURN RIGHT AND GO NORTH APPROX. 0.1 MILE. TURN LEFT AND GO WEST APPROX. 300 FEET GO THE LIVINGSTON #19 WELL PAD. THIS LOCATION IS ON WEST SIDE OF WELL PAD.



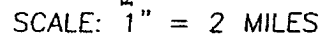
**APACHE CORPORATION**

NEDU #241  
LOCATED 4220 FEET FROM THE SOUTH LINE  
AND 940 FEET FROM THE EAST LINE OF SECTION 4,  
TOWNSHIP 21 SOUTH, RANGE 37 EAST, N.M.P.M.,  
LEA COUNTY, NEW MEXICO.

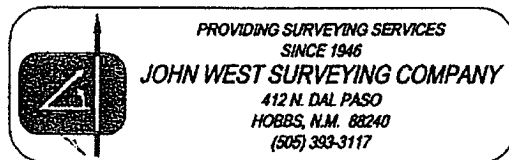
Survey Date: 06/24/06	Sheet 1 of 1 Sheets
W.O. Number: 06.11.0977	Dr By: M.R. Rev 1:N/A
Date: 06/30/06	Disk: CD#6 06110977 Scale: 1"=100'

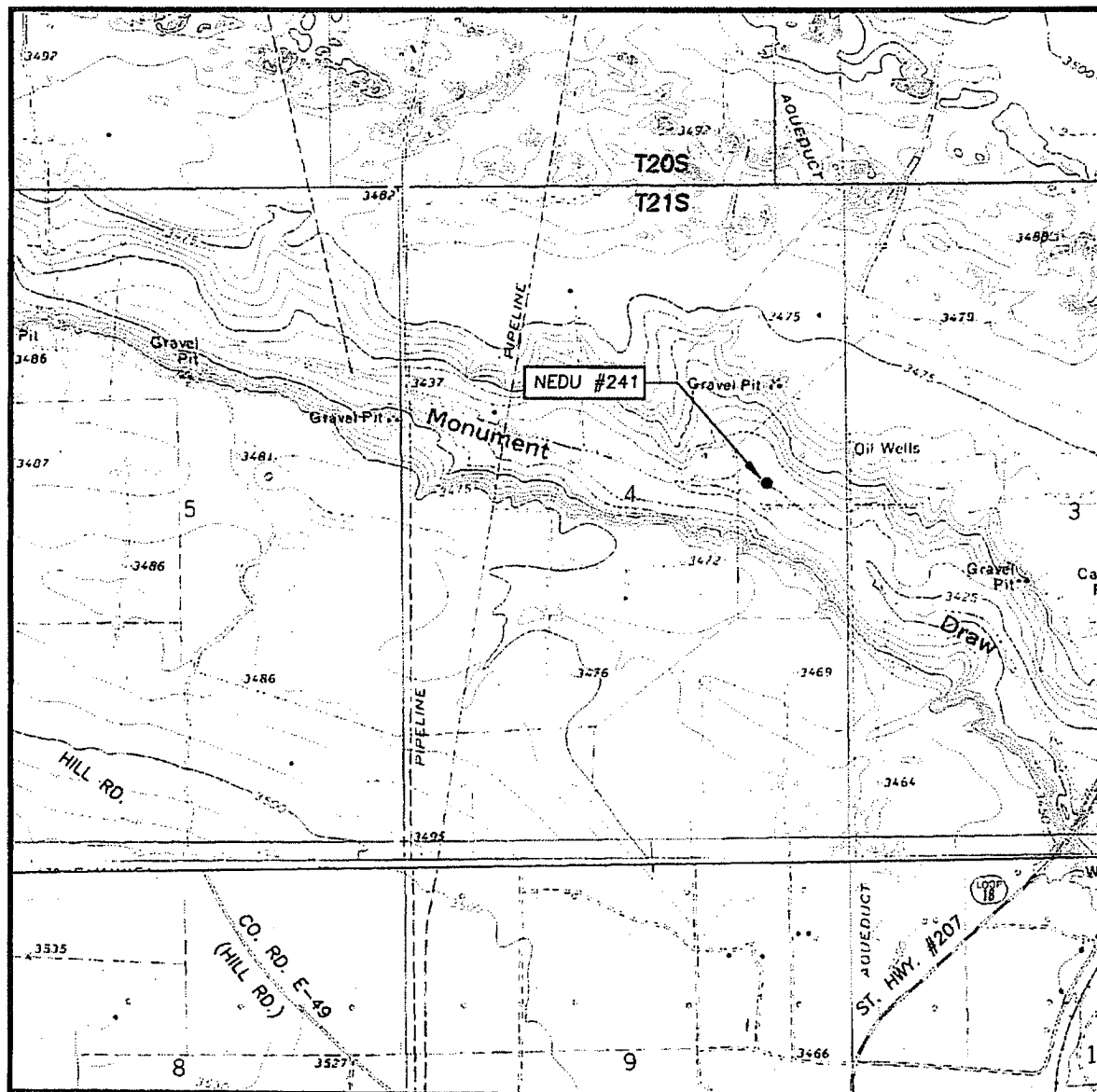


PROVIDING SURVEYING SERVICES  
SINCE 1946  
**JOHN WEST SURVEYING COMPANY**  
412 N. DAL PASO  
HOBBS, N.M. 88240  
(505) 393-3117



LEASE\_\_\_\_\_NEDU





CONTOUR INTERVAL:  
HOBBS SW, N.M. - 5'  
EUNICE, N.M. - 10'

U.S.G.S. TOPOGRAPHIC MAP  
HOBBS SW, N.M.

