

District I
1625 N. French Dr., Hobbs, NM 88240
District II
1301 W. Grand Avenue, Artesia, NM 88210
District III
1000 Rio Brazos Road, Aztec, NM 87410
District IV
1220 S. St. Francis Dr., Santa Fe, NM 87505

State of New Mexico
Energy Minerals and Natural Resources

Form C-101
May 27, 2004

Oil Conservation Division
1220 South St. Francis Dr.
Santa Fe, NM 87505

Submit to appropriate District Office

☐ AMENDED REPORT

APPLICATION FOR PERMIT TO DRILL, RE-ENTER, DEEPEN, PLUG BACK, OR ADD A ZONE

¹ Operator Name and Address Yates Petroleum Corporation 105 South Fourth Street Artesia, New Mexico 88210		² OGRID Number 025575
³ Property Code		⁴ API Number 30-005-61797
⁵ Property Name Hrubetz BBV Com		⁶ Well No. 1
⁹ Proposed Pool 1 Undesignated Precambrian		¹⁰ Proposed Pool 2

⁷ Surface Location

UL or lot no.	Section	Township	Range	Lot Idn	Feet from the	North/South line	Feet from the	East/West line	County
L	3	12S	26E		1980'	South	660'	West	Chaves

⁸ Proposed Bottom Hole Location If Different From Surface

UL or lot no.	Section	Township	Range	Lot Idn	Feet from the	North/South line	Feet from the	East/West line	County

Additional Well Information

¹¹ Work Type Code E	¹² Well Type Code G	¹³ Cable/Rotary Pulling Unit	¹⁴ Lease Type Code P	¹⁵ Ground Level Elevation 3445'
¹⁶ Multiple N	¹⁷ Proposed Depth 6029'	¹⁸ Formation Precambrian	¹⁹ Contractor Undesignated	²⁰ Spud Date ASAP
Depth to Groundwater >50'		Distance from nearest fresh water well <1000'		Distance from nearest surface water <1000'
Pit: Liner: Synthetic XX 12 mils thick Clay <input type="checkbox"/> Pit Volume: _____ bbls Drilling Method: Closed-Loop System <input type="checkbox"/> Fresh Water <input type="checkbox"/> Brine <input checked="" type="checkbox"/> Diesel/Oil-based <input type="checkbox"/> Gas/Air <input type="checkbox"/>				

²¹ Proposed Casing and Cement Program

Hole Size	Casing Size	Casing weight/foot	Setting Depth	Sacks of Cement	Estimated TOC
17 1/2"	13 3/8"	48#	50'	100 sx	In Place
12 3/4"	8 5/8"	24#	1360'	250 sx	In Place
7 7/8"	5 1/2"	15.5#	6028'	400 sx	Tie-Back

²² Describe the proposed program. If this application is to DEEPEN or PLUG BACK, give the data on the present productive zone and proposed new productive zone. Describe the blowout prevention program, if any. Use additional sheets if necessary.

SEE ATTACHED PAGE 2.

Verify Tieback by CBL or Temp Survey

²³ I hereby certify that the information given above is true and complete to the best of my knowledge and belief. I further certify that the drilling pit will be constructed according to NMOCD guidelines ☐, a general permit ☒, or an (attached) alternative OCD-approved plan ☐.

Signature: Debbie L. Caffall

Printed name: Debbie L. Caffall

Title: Regulatory Agent

E-mail Address:

Date: 10/5/06

Phone: (505) 748-4376

OIL CONSERVATION DIVISION

Approved by:

BRYAN G. ARANT

DISTRICT II GEOLOGIST

Approval Date: OCT 11 2006

Expiration Date: OCT 11 2007

Conditions of Approval Attached ☐

YATES PETROLEUM CORPORATION

Hrubetz BBV Com #1 Re-entry

1980' FSL & 660' FWL

Section 3-T12S-R26E

Chaves County, New Mexico

Yates Petroleum Corporation plans to re-enter this well bore that was originally drilled by Hrubetz Oil Co. as the Bogle "3" #1 well. The well was plugged on 2/9/1983. Yates plans to use a pulling unit and a reverse unit to drill out the plugs in the 8 5/8" casing and the 7 7/8" open hole to the original TD @ 6029'. The hole will be circulated clean. Will tie back the 5 1/2" casing together and cement volume calculated to tie back to 1000' (approx. 400 sx). The well will be completed with a pulling unit in the Silurian-Devonian formation at 5724' to 5728' and 5730' to 5746'. A 3000# BOPE will be installed on the 8 5/8" casing.

District I
1625 N. French Dr., Hobbs, NM 88240

District II
811 South First, Artesia, NM 88210

District III
1000 Rio Brazos Rd., Aztec, NM 87410

District IV
1220 S. St. Francis Dr., Santa Fe, NM 87505

State of New Mexico
Energy, Minerals & Natural Resources Department

Form C-102
Revised August 15, 2000

OIL CONSERVATION DIVISION
1220 South St. Francis Dr.
Santa Fe, NM 87505

Submit to Appropriate District Office
State Lease - 4 Copies
Fee Lease - 3 Copies

RECEIVED
OCD - ARTESIA
AMENDED REPORT

WELL LOCATION AND ACREAGE DEDICATION PLAT

¹ API Number 30-	² Pool Code	³ Pool Name Unders. Lea Lale; Pre-Permian
⁴ Property Code	⁵ Property Name Hrubetz HCU Com.	⁶ Well Number 1
⁷ OGRID No. 025575	⁸ Operator Name Yates Petroleum Corporation	⁹ Elevation 3445'

¹⁰ Surface Location



UL or lot no.	Section	Township	Range	Lot Idn	Feet from the	North/South line	Feet from the	East/West line	County
L	3	12S	26E		1980	South	660	West	Chaves

¹¹ Bottom Hole Location If Different From Surface

UL or lot no.	Section	Township	Range	Lot Idn	Feet from the	North/South line	Feet from the	East/West line	County

¹² Dedicated Acres 320	¹³ Joint or Infill	¹⁴ Consolidation Code	¹⁵ Order No.
---	-------------------------------	----------------------------------	-------------------------

NO ALLOWABLE WILL BE ASSIGNED TO THIS COMPLETION UNTIL ALL INTERESTS HAVE BEEN CONSOLIDATED OR A NON-STANDARD UNIT HAS BEEN APPROVED BY THE DIVISION

FEE	FEE			17 OPERATOR CERTIFICATION I hereby certify that the information contained herein is true and complete to the best of my knowledge and belief.  Signature Robert Asher Printed Name Regulatory Agent Title 10/24/2003 Date
FEE				18 SURVEYOR CERTIFICATION I hereby certify that the well location shown on this plat was plotted from field notes of actual surveys made by me or under my supervision, and that the same is true and correct to the best of my belief. Date of Survey Signature and Seal of Professional Surveyor: REFER TO ORIGINAL PLAT. Certificate Number
FEE 	NM-70879			
NM-69156				

MEXICO OIL CONSERVATION COMMISSION
WELL LOCATION AND ACREAGE DEDICATION PLAT

OCT 4 1982
C-102
Revised C-120
Effective 1-1-83

All distances must be from the outer boundaries of the Section

O. C. D.

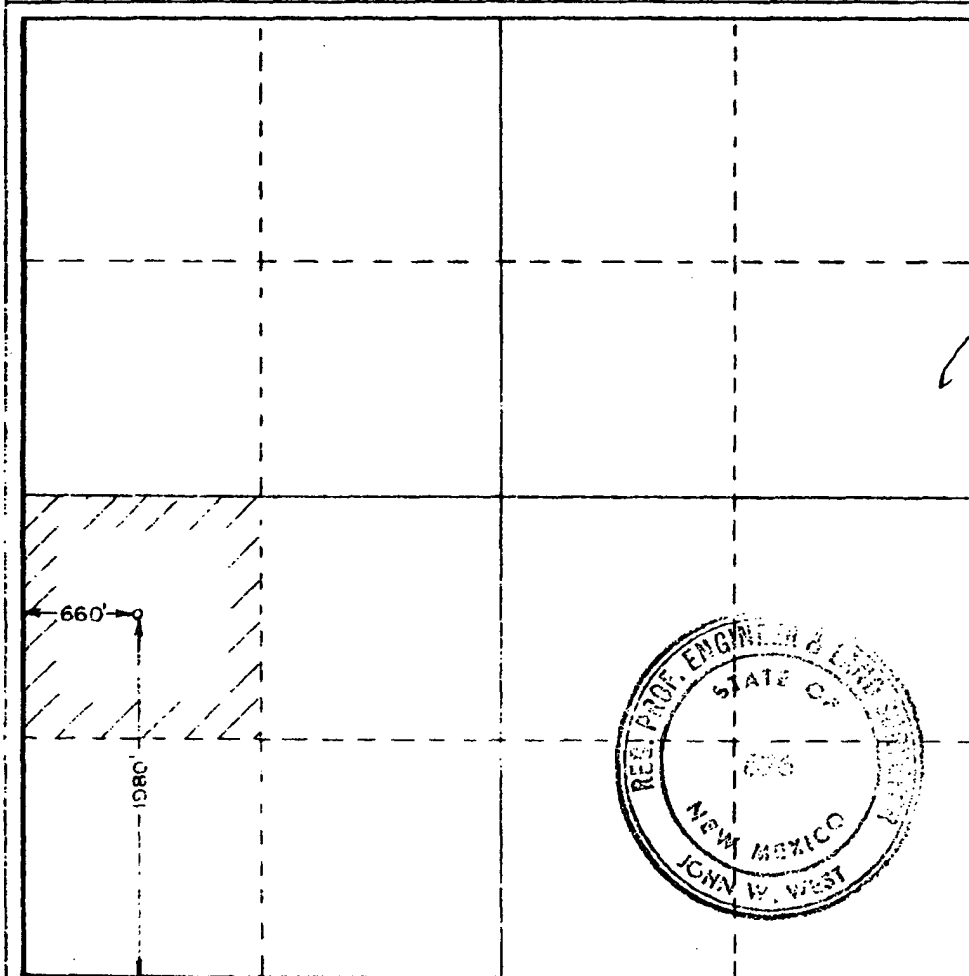
HRUBETZ OIL COMPANY		Lease		BOGLE 3		ARTESIA OFFICE	
Section	1	Range	3	County	CHAVES	1	
Section	1	Range	3	County	CHAVES	1	
1980		feet from the SOUTH line and		660		feet from the WEST line	
Producing Formation	DEVONIAN	Pool	WILDCAT		Acres	40	

- Outline the acreage dedicated to the subject well by colored pencil or hatchure marks on the plat below.
- If more than one lease is dedicated to the well, outline each and identify the ownership thereof (both as to working interest and royalty).
- If more than one lease of different ownership is dedicated to the well, have the interests of all owners been consolidated by communitization, unitization, force-pooling, etc?

☐ Yes ☐ No If answer is "yes," type of consolidation _____

If answer is "no," list the owners and tract descriptions which have actually been consolidated. (Use reverse side of this form if necessary.) _____

No allowable will be assigned to the well until all interests have been consolidated (by communitization, unitization, forced-pooling, or otherwise) or until a non-standard unit, eliminating such interests, has been approved by the Commission.



CERTIFICATION

I hereby certify that the information contained herein is true and complete to the best of my knowledge and belief.

John W. West

AGENT

Company
HRUBETZ OIL COMPANY

Date
10-1-1982

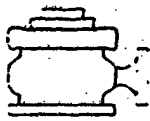
I hereby certify that the well location shown on this plat was plotted from field notes of actual surveys made by me or under my supervision, and that the same is true and correct to the best of my knowledge and belief.

Date Surveyed
9/30/82

Registered Professional Engineer
and/or Land Surveyor

John W. West

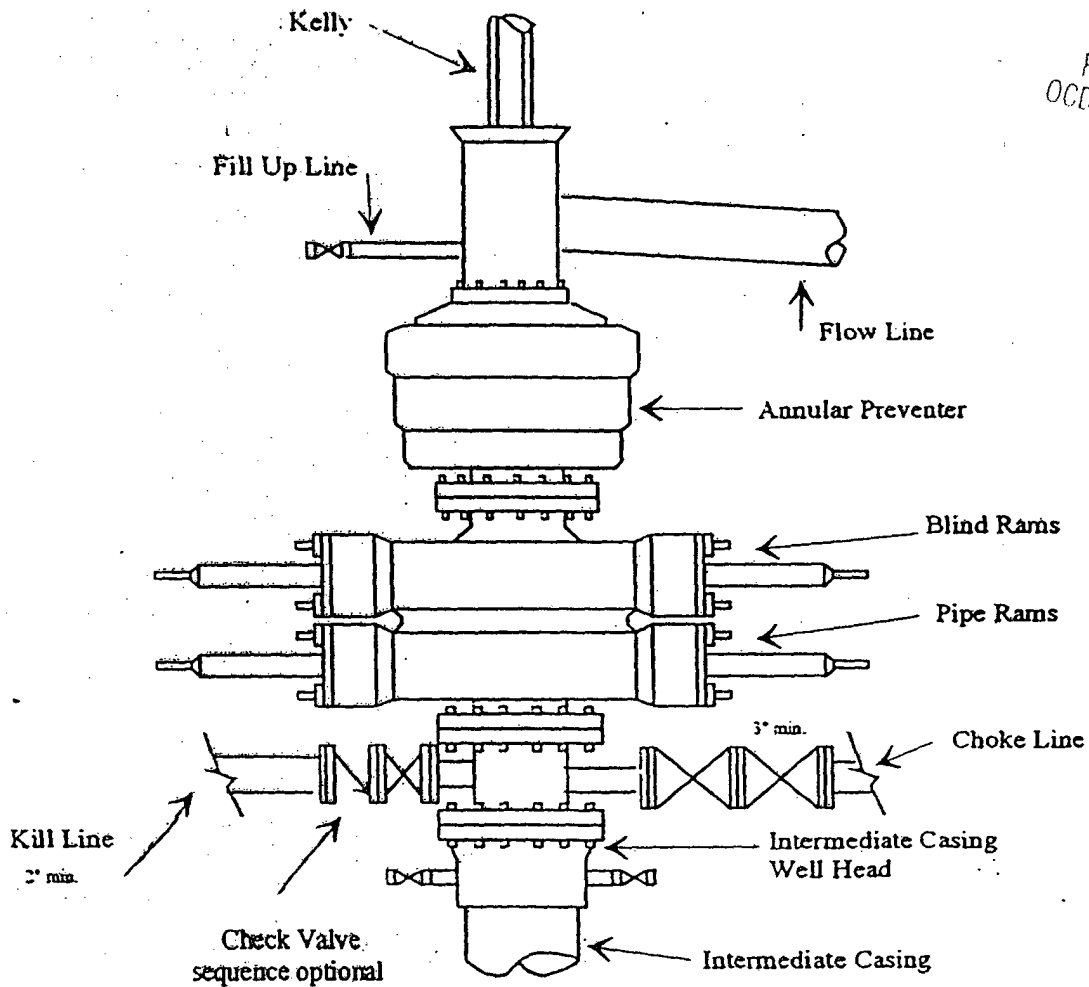
Certificate No. JOHN W. WEST 678
PATRICK A. ROMERO 6468
Ronald J. Edison 3239



Yates Petroleum Corporation

BOP-3

Typical 3,000 psi Pressure System Schematic Annular with Double Ram Preventer Stack



RECEIVED
OCD - ARTESIA

Typical 3,000 psi choke manifold assembly with at least these minimum features

