

Submit 3 Copies To Appropriate District Office
District I
1625 N. French Dr., Hobbs, NM 88240
District II
1301 W. Grand Ave., Artesia, NM 88210
District III
1000 Rio Brazos Rd., Aztec, NM 87410
District IV
1220 S. St. Francis Dr., Santa Fe, NM 87505

State of New Mexico
Energy, Minerals and Natural Resources

Form C-103
May 27, 2004

OIL CONSERVATION DIVISION
1220 South St. Francis Dr.
Santa Fe, NM 87505

WELL API NO.

30-015-22548

5. Indicate Type of Lease

STATE ☐ FEE ☒

6. State Oil & Gas Lease No.

7. Lease Name or Unit Agreement Name

Kennedy JQ Com

8. Well Number

1

9. OGRID Number

025575

10. Pool name or Wildcat

Kennedy Farms Upper Penn

SUNDRY NOTICES AND REPORTS ON WELLS
(DO NOT USE THIS FORM FOR PROPOSALS TO DRILL OR TO DEEPEN OR PLUG A WELL TO DIFFERENT RESERVOIR. USE "APPLICATION FOR PERMIT TO DRILL" FORM C-104 FOR SUCH PROPOSALS.)

1. Type of Well: Oil Well ☐ Gas Well ☒ Other ☐

2. Name of Operator

Yates Petroleum Corporation

3. Address of Operator

105 S. 4th Street, Artesia, NM 88210

4. Well Location

Unit Letter H : 2510 feet from the North line and 660 feet from the East line
Section 33 Township 17S Range 26E NMPM Eddy County

11. Elevation (Show whether DR, RKB, RT, GR, etc.)
3339'GR

Pit or Below-grade Tank Application ☐ or Closure ☐

Pit type _____ Depth to Groundwater _____ Distance from nearest fresh water well _____ Distance from nearest surface water _____

Pit Liner Thickness: _____ mil Below-Grade Tank: Volume _____ bbls; Construction Material _____

12. Check Appropriate Box to Indicate Nature of Notice, Report or Other Data

NOTICE OF INTENTION TO:

PERFORM REMEDIAL WORK ☐ PLUG AND ABANDON ☒
TEMPORARILY ABANDON ☐ CHANGE PLANS ☐
PULL OR ALTER CASING ☐ MULTIPLE COMPL ☐

OTHER: ☐

SUBSEQUENT REPORT OF:

REMEDIAL WORK ☐ ALTERING CASING ☐
COMMENCE DRILLING OPNS. ☐ PLUG AND ABANDON ☐
CASING/CEMENT JOB ☐

OTHER: ☐

13. Describe proposed or completed operations. (Clearly state all pertinent details, and give pertinent dates, including estimated date of starting any proposed work). SEE RULE 1103. For Multiple Completions: Attach wellbore diagram of proposed completion or recompletion.

Yates Petroleum Corporation plans to plug and abandon this well as follows:

NOTE: Pull a CBL/GR/CCL log to surface to find TOC from squeeze job pumped 3/29/06. If the cement circulated, place 150' plugs inside the 4-1/2" casing. Do not perforate the casing. In the intervals below where no cement is present outside the 4-1/2" casing, perf and squeeze with 50 sx.

1. MIRU all safety equipment as needed. No casing recovery will be attempted.
2. Set a CIBP at 7170'. Load hole with plugging mud. Spot a 10 sx Class "C" cement plug from 7070'-7170'.
3. Spot a 15 sx Class "C" cement plug from 6620'-6720' across the Cisco top. WOC and tag the plug, reset if necessary.
4. Perforate the casing at 5610'. Pump a 50 sx Class "C" cement plug and displace it to 5510'. This will leave a plug across the WC top. WOC and tag plug, reset if necessary.
5. Perforate the casing at 4390'. Pump a 50 sx Class "C" cement plug and displace it to 4290'. This will leave a plug across the Abo top. WOC and tag plug, reset if necessary.
6. Perforate the casing at 4030'. Pump a 50 sx Class "C" cement plug and displace it to 3930'. This will leave a 100' plug in and outside the casing.
7. Spot a 15 sx plug from 2351'-2451'. This will leave a plug across the Glorieta top. WOC and tag plug, reset if necessary.
8. Spot a 15 sx plug from 1393'-1493'. This will leave a plug across the intermediate casing shoe. WOC and tag plug, reset if necessary.
9. Spot a 15 sx plug from 379'-479'. This will leave a plug across the surface casing shoe. WOC and tag plug, reset if necessary.
10. Spot a 15 sx plug from 0-150'. This will leave a surface plug. WOC and tag plug, reset if necessary.
11. Remove all surface equipment and weld dry hole marker per regulations.

NOTE: Yates Petroleum Corporation will use steel pits and no earth pits

**Notify OCD 24 hrs. prior
to any work done.**

I hereby certify that the information above is true and complete to the best of my knowledge and belief. I further certify that any pit or below-grade tank has been/will be constructed or closed according to NMOCD guidelines ☐, a general permit ☐ or an (attached) alternative OCD-approved plan ☐.

SIGNATURE Tina Huerta TITLE Regulatory Compliance Supervisor DATE October 16, 2006

Type or print name Tina Huerta E-mail address: tinah@ypcnm.com Telephone No. 505-748-1471

For State Use Only

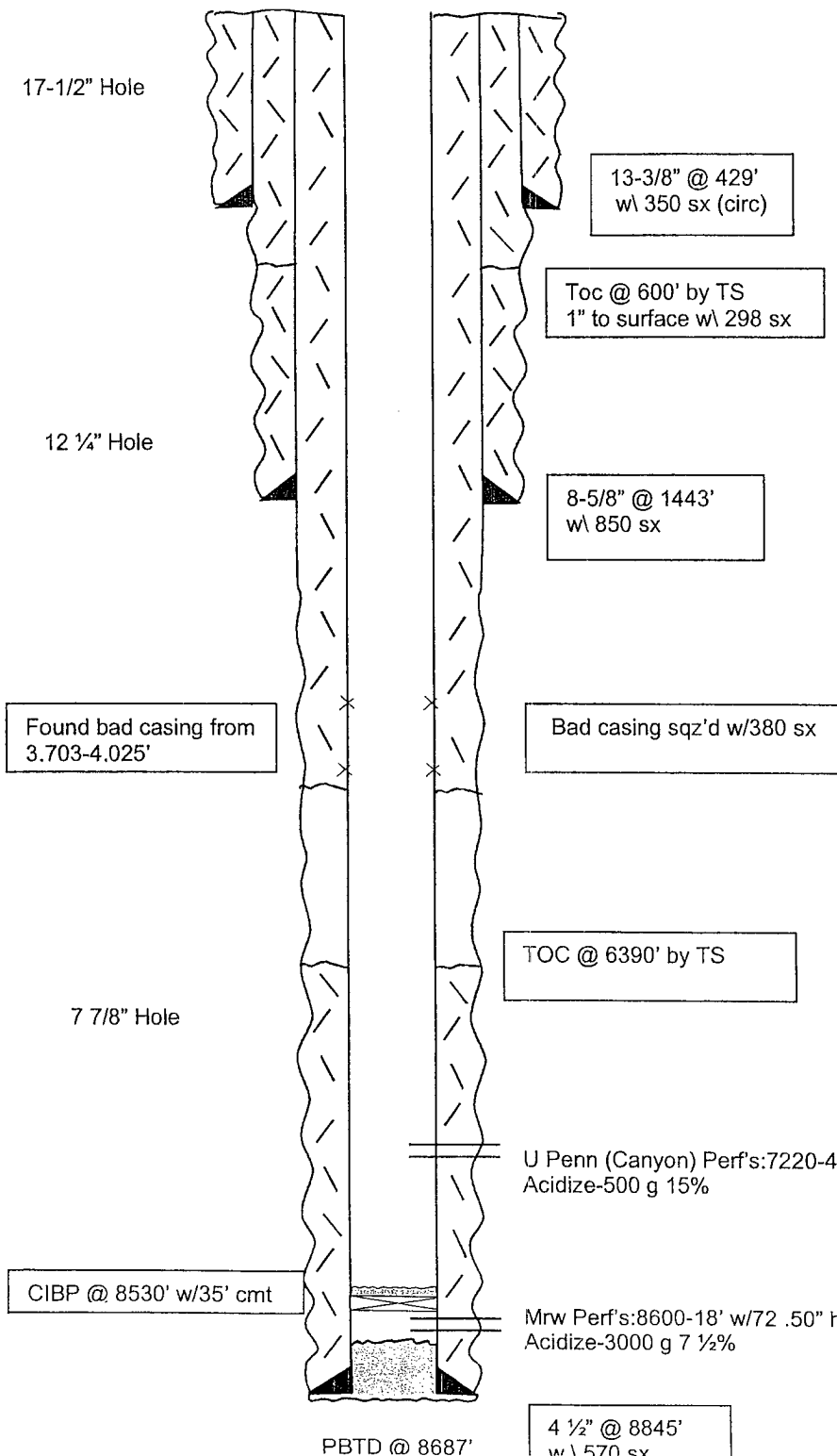
APPROVED BY: Phil Hankins TITLE Field Supv DATE 10/19/06

Conditions of Approval (if any):

WELL NAME: Kennedy JQ Com #1 FIELD: Kennedy Farms Morrow
 LOCATION: 2510' FNL & 660' FEL, Sec 33-17S-26E Eddy County
 GL: 3339' ZERO: KB: 3352'
 SPUD DATE: 5-22-78 COMPLETION DATE: 7-6-78
 COMMENTS: API# 30-015-22548

CASING PROGRAM

13-3/8" 48# H40	429'
8-5/8" 24# K55 ST&C	1443'
4 1/2" 10.5# & 11.6# N-80 ST&C	8845'
2.375" tubing w\ TA @ 8,359'	



Before

TOPS:

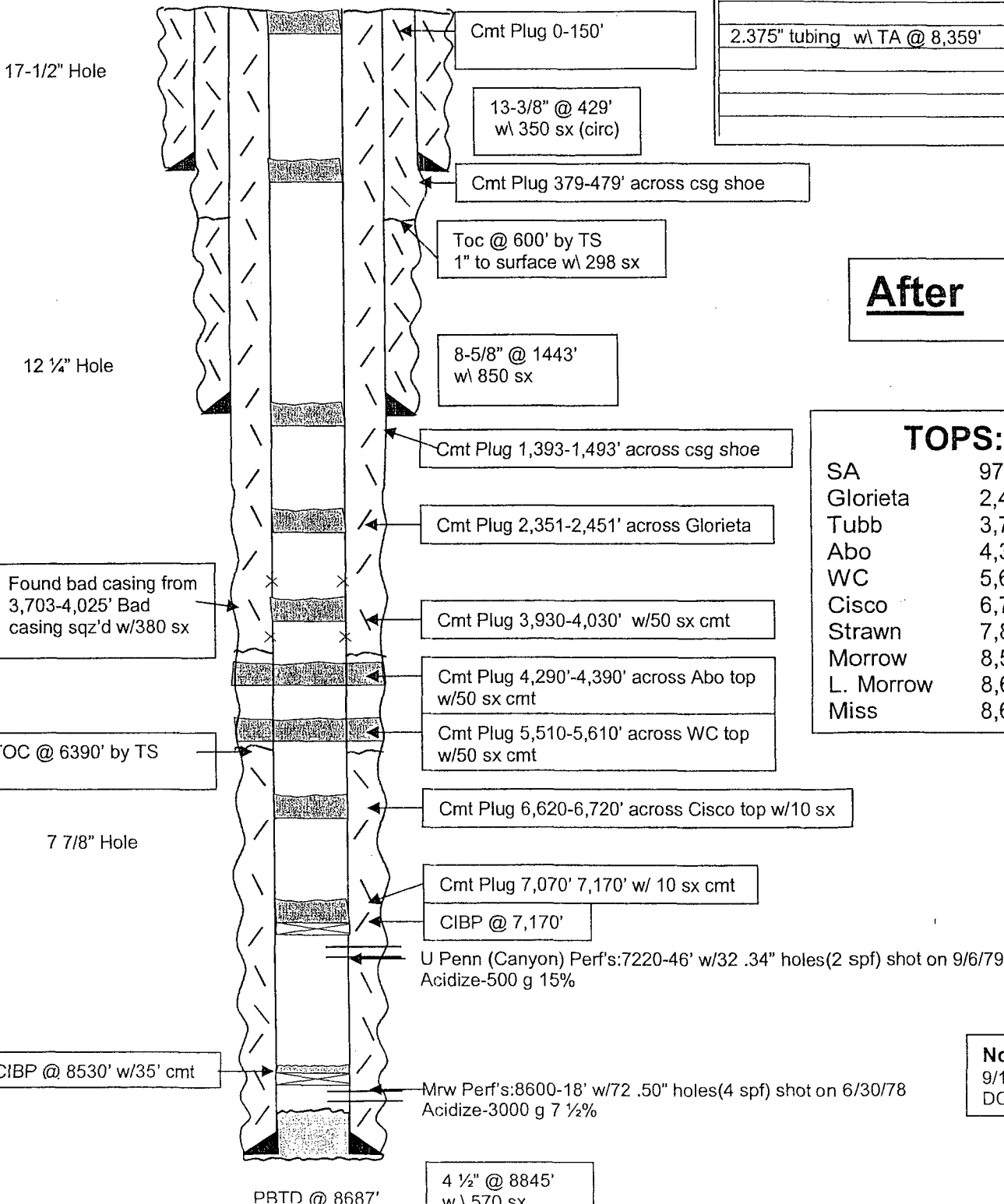
SA	970'
Glorieta	2,451'
Tubb	3,740'
Abo	4,390'
WC	5,610'
Cisco	6,720'
Strawn	7,840'
Morrow	8,540'
L. Morrow	8,640'
Miss	8,675'

Not to Scale
 9/15/06
 DC/M.Hill

WELL NAME: Kennedy JQ Com #1 FIELD: Kennedy Farms Morrow
 LOCATION: 2510' FNL & 660' FEL , Sec 33-17S-26E Eddy County
 GL: 3339' ZERO: KB: 3352'
 SPUD DATE: 5-22-78 COMPLETION DATE: 7-6-78
 COMMENTS: API# 30-015-22548

CASING PROGRAM

13-3/8" 48# H40	429'
8-5/8" 24# K55 ST&C	1443'
4 1/2" 10.5# & 11.6# N-80 ST&C	8845'
2.375" tubing w/ TA @ 8,359'	



After

TOPS:	
SA	970'
Glorieta	2,451'
Tubb	3,740'
Abo	4,390'
WC	5,610'
Cisco	6,720'
Strawn	7,840'
Morrow	8,540'
L. Morrow	8,640'
Miss	8,675'

Not to Scale
 9/19/06
 DC/M.Hill