

# State of New Mexico

## DISTRICT I

1625 N. FRENCH DR., HOBBS, NM 88240

Energy, Minerals and Natural Resources Department

Form C-102

## DISTRICT II

1301 W. GRAND AVENUE, ARTESIA, NM 88210

## OIL CONSERVATION DIVISION

1220 SOUTH ST. FRANCIS DR.

Santa Fe, New Mexico 87505

Revised October 12, 2005

Submit to Appropriate District Office

State Lease - 4 Copies

Fee Lease - 3 Copies

## DISTRICT III

1000 Rio Brazos Rd., Aztec, NM 87410

## DISTRICT IV

1220 S. ST. FRANCIS DR., SANTA FE, NM 87505

## WELL LOCATION AND ACREAGE DEDICATION PLAT

|                            |  |                                      |
|----------------------------|--|--------------------------------------|
| API Number<br>30-025-01023 | Pool Code<br>97431                           | Pool Name<br>Hightower; Atoka, North |
| Property Code<br>35475     | Property Name<br>STATE 65                    | Well Number<br>1                     |
| OGRID No.<br>152527        | Operator Name<br>NORTHSTAR OPERATING COMPANY | Elevation<br>4232'                   |

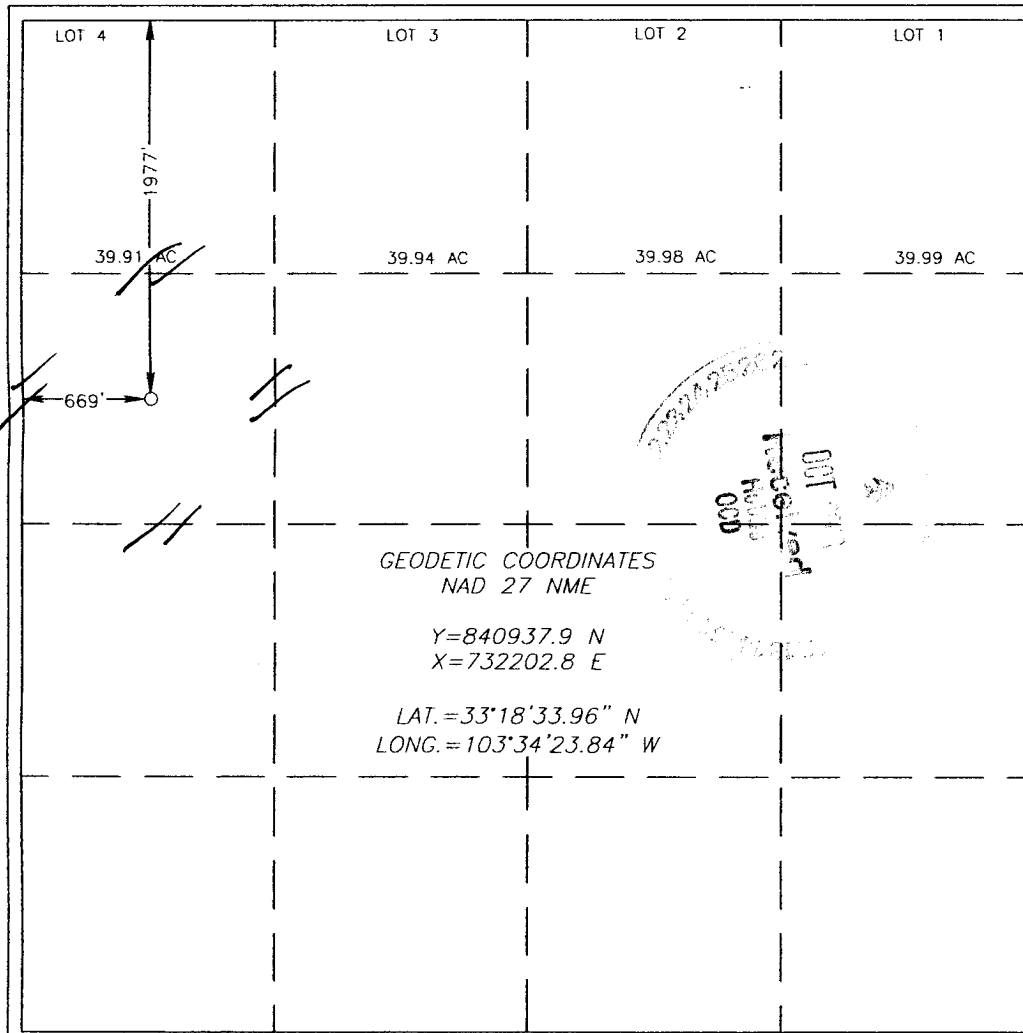
### Surface Location

| UL or lot No. | Section | Township | Range | Lot Idn | Feet from the | North/South line | Feet from the | East/West line | County |
|---------------|---------|----------|-------|---------|---------------|------------------|---------------|----------------|--------|
| E             | 1       | 12-S     | 33-E  |         | 1977'         | NORTH            |               | WEST           | LEA    |

### Bottom Hole Location If Different From Surface

| UL or lot No.         | Section | Township        | Range | Lot Idn            | Feet from the | North/South line | Feet from the | East/West line | County |
|-----------------------|---------|-----------------|-------|--------------------|---------------|------------------|---------------|----------------|--------|
|                       |         |                 |       |                    |               |                  |               |                |        |
| Dedicated Acres<br>40 |         | Joint or Infill |       | Consolidation Code |               | Order No.        |               |                |        |

NO ALLOWABLE WILL BE ASSIGNED TO THIS COMPLETION UNTIL ALL INTERESTS HAVE BEEN CONSOLIDATED  
OR A NON-STANDARD UNIT HAS BEEN APPROVED BY THE DIVISION



### OPERATOR CERTIFICATION

I hereby certify that the information herein is true and complete to the best of my knowledge and belief, and that this organization either owns a working interest or unleased mineral interest in the land including the proposed bottom hole location or has a right to drill this well at this location pursuant to a contract with an owner of such mineral or working interest, or to a voluntary pooling agreement or a compulsory pooling order heretofore entered by the division.

Signature: *[Signature]* Date: 09/26/06  
Printed Name: Mark A. Philpy

### SURVEYOR CERTIFICATION

I hereby certify that the well location shown on this plat was plotted from field notes of actual surveys made by me or under my supervision, and that the same is true and correct to the best of my belief.

MARCH 07, 2006

Date Surveyed: MR  
Signature & Seal of Professional Surveyor: *[Signature]*  
Certificate No. GARY EIDSON 12641