

Submit 3 Copies To Appropriate District Office  
District I  
1625 N. French Dr., Hobbs, NM 88240  
District II  
1301 W. Grand Ave., Artesia, NM 88210  
District III  
1000 Rio Brazos Rd., Aztec, NM 87410  
District IV  
1220 S. St. Francis Dr., Santa Fe, NM 87505

State of New Mexico  
Energy, Minerals and Natural Resources

Form C-103  
May 27, 2004

OIL CONSERVATION DIVISION  
1220 South St. Francis Dr.  
Santa Fe, NM 87505

WELL API NO. 30-025-08538
5. Indicate Type of Lease STATE <input checked="" type="checkbox"/> FEE <input type="checkbox"/>
6. State Oil & Gas Lease No. 31172
7. Lease Name or Unit Agreement Name East Vacuum GB/SA Unit Tract 3315
8. Well Number 002
9. OGRID Number 217817
10. Pool name or Wildcat Vacuum; Grayburg/San Andres

SUNDRY NOTICES AND REPORTS ON WELLS  
(DO NOT USE THIS FORM FOR PROPOSALS TO DRILL OR TO DEEPEN OR PLUG BACK TO A DIFFERENT RESERVOIR. USE "APPLICATION FOR PERMIT" (FORM C-101) FOR SUCH PROPOSALS.)

1. Type of Well: Oil Well ☒ Gas Well ☐ Other

2. Name of Operator  
ConocoPhillips Company

3. Address of Operator  
3300 N. "A" St., Bldg. 6, Midland, TX 79710

4. Well Location  
Unit Letter J : 1980 feet from the South line and 1980 feet from the East line  
Section 33 Township 17-S Range 35-E NMPM County Lea

11. Elevation (Show whether DR, RKB, RT, GR, etc.)  
3941' GR

Pit or Below-grade Tank Application ☐ or Closure ☐

Pit type \_\_\_\_\_ Depth to Groundwater \_\_\_\_\_ Distance from nearest fresh water well \_\_\_\_\_ Distance from nearest surface water \_\_\_\_\_

Pit Liner Thickness: \_\_\_\_\_ mil Below-Grade Tank: Volume \_\_\_\_\_ bbls; Construction Material \_\_\_\_\_

12. Check Appropriate Box to Indicate Nature of Notice, Report or Other Data

NOTICE OF INTENTION TO:

PERFORM REMEDIAL WORK ☐ PLUG AND ABANDON ☐  
TEMPORARILY ABANDON ☐ CHANGE PLANS ☐  
PULL OR ALTER CASING ☐ MULTIPLE COMPL ☐

OTHER: ☐

SUBSEQUENT REPORT OF:

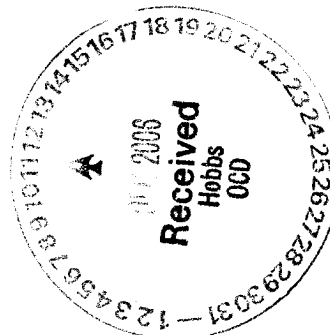
REMEDIAL WORK ☒ ALTERING CASING ☐  
COMMENCE DRILLING OPNS. ☐ P AND A ☐  
CASING/CEMENT JOB ☐

OTHER: ☐

13. Describe proposed or completed operations. (Clearly state all pertinent details, and give pertinent dates, including estimated date of starting any proposed work). SEE RULE 1103. For Multiple Completions: Attach wellbore diagram of proposed completion or recompletion.

10-04-06 - 10-23-06

Repaired downhole failure, per attached Daily Operations Summary. Ran Mechanical Integrity Test, chart attached.



I hereby certify that the information above is true and complete to the best of my knowledge and belief. I further certify that any pit or below-grade tank has been/will be constructed or closed according to NMOCD guidelines ☐, a general permit ☐ or an (attached) alternative OGD-approved plan ☐.

SIGNATURE Celeste G. Dale TITLE Regulatory Specialist DATE 12/07/06

Type or print name Celeste G. Dale

For State Use Only

E-mail address:

celeste.g.dale@conocophillips.com

Telephone No.

432-688-6884

OGCD FIELD REPRESENTATIVE II/STAFF MANAGER

APPROVED BY:

Conditions of Approval (if any):

TITLE

DATE 12 2006

**REPAIR DOWNHOLE FAILURE, 10/4/2006 07:00**

API / UWI 300250853800	County LEA	State/Province NEW MEXICO	Surf Loc Section 33, T-17S, R-35E	N/S Dist (ft) 1,980.00	N/S Ref S	E/W Dist (ft) 1,980.00	E/W Ref E	Job Category WELL INTERVENTION
Ground Elevation (ft) 3,941.00		Latitude (DMS)		Longitude (DMS)		Original Spud Date 5/21/1939		Rig Release Date 6/16/1939

**10/4/2006 07:00 - 10/4/2006 17:00**
**Last 24hr Summary**

Drive to location, conduct JSA, Tailgate Safety Meeting, Go Program, & Orientation. Waited 3 1/2 hrs for roustabouts. Disconnect from bridle, loosen base bolts & slide Rotaflex back to rear of base.  
MIRUPU. Check pressures...Surf 290/Csg 90/tbg 70 psi. Open surf to reverse pit w/ constant 1/4" stream of water. Pump 20 bbl 10# down 5 1/2" csg. Unseat standing valve, TOH w/ rods & plunger.(1 1/2" Polish Rod x 36', 2- 1" Ponys x 4' & 6', 170- 1" x 4375'(5 of which were laid down due to shoulder wear), 10- Guided !" Rods x 250', & 5' Plunger w/ 1' sub.(4677' Total). Did not get out of hole w/ standing valve. SION

**10/5/2006 07:00 - 10/5/2006 17:00**
**Last 24hr Summary**

Drive to location, conduct JSA, Tailgate Safety Meeting, Go Program, & Orientation. RUWL, RIH w/ perf tool to 4486'. Shoot 2- .20" holes in tbg. RDWL. Pump 30 bbl 10# down csg. NDWH, NUBOP. Release TAC. RU Tuboscope. TOH, scan 144 jts 2 7/8" tbg & 1 jt 2 7/8" TK-99. Laid down 1 jt w/ perf holes, & pump barrel. TIH w/ sandline bailer, TFF @ 4630'(25' fill). SION

**10/6/2006 07:00 - 10/6/2006 17:00**
**Last 24hr Summary**

Drive to location, conduct JSA, Tailgate Safety Meeting, & Go Program. Kill well w/ 40 bbl 10# down csg, Bleed pressure off surface csg. Pick up & TIH w/ 5 1/2" RBP & Packer in tandem. Set RBP @ 4227'. Set pkr @ 4195', load tbg to test RBP with 500 psi. Load & test csg to 500 psi on chart recorder. Reverse circ 100 bbl clean 10#. TOH w/ tbg & pkr. Drop 2- 100# sx frac sand down csg. Line up CBL for Mon- AM. SIOWE

**10/9/2006 07:00 - 10/9/2006 17:00**
**Last 24hr Summary**

Drive to location, conduct JSA, Tailgate Safety Meeting, & Go Program. RUWL, TIH w/ CBL. Log from 4227' to surface. TOC located @ 3450'. TOH w/ CBL. RIH w/ perf tool, shoot hole @ 3380'. TOH w/ perf tool. RU pump truck. Pump 10 bbl 10# down 5 1/2" csg, did not connect to surface csg, formation charging up to 1400 psi(lost 400 psi in 10 min). RIH w/ 2nd perf tool, shot .41" hole @ 1500'. TOH w/ perf tool, RDMOWL. Pump down csg @ 1.3 bpm(1200 psi) w/ 3/4 bpm returns up surface csg. Pumped 50 bbl total. SION

**10/10/2006 07:00 - 10/10/2006 17:00**
**Last 24hr Summary**

Drive to location, conduct JSA, Tailgate Safety Meeting, & Go Program. RU pump truck, pump 100 bbl 10# down 5 1/2" csg @ 1200 psi @ 1.3 bpm.(3/4" bpm returns up surf csg). TIH w 108 jts 2 7/8" tbg to 3355'. Spot 2 sx sand down tbg, flush w/ 20 bbl 10#. SION

**10/11/2006 07:00 - 10/11/2006 14:00**
**Last 24hr Summary**

Drive to location, conduct JSA, Tailgate Safety Meeting, Go Program, & Orientation. RU cementers. Spot 65sx(15 bbl) C cmt w/ 2% CCL @ lower perfed hole(3380'), displace w/ 15 bbl fresh. TOH w/ tbg. Close blinds, circ 320 sx(72 bbl) C- last 20 bbl added 2% CCL, displaced w/ 33 bbl fresh. Had surface csg valve open til cmt returns reached surface at which time valve was closed. Lacked 7 bbl flush then, shut in pressure was 1100 psi, pumped job @ 2 bpm. RD cementers. SION

**10/12/2006 07:00 - 10/12/2006 17:00**
**Last 24hr Summary**

Drive to location, conduct Interactive Safety Meeting, JSA, Tailgate Safety Meeting w/ Go. Pick up & TIH w/ 4 3/4" tri-cone bit, 6- 3 3/4" DC, 36 jts 2 7/8" tbg. Tag cmt @ 1320'. RU Reverse Unit & power swivel, drill out to 1410', returns to pit were soft. LD 1 jt tbg, reverse bottoms up. SION

**10/13/2006 07:00 - 10/13/2006 17:00**
**Last 24hr Summary**

Drive to location, participate in JSA, Tailgate Safety Meeting, Go Program, & Orientate relief Reverse Unit Operator. Resume drill out of cement. Fell out of cement @ 1540'. RD power swivel. Pressure test csg to 500 psi for 10 min. TIH to cement top @ 2974'. Pick up power swivel & drill out 3056'. Reverse bottoms up. RD swivel. LD 1 jt tbg. SIOWE

**10/16/2006 07:00 - 10/16/2006 17:00**
**Last 24hr Summary**

Drive to location, conduct JSA, participate in Tailgate Safety Meeting, & Go Program. Pick up swivel, continue drilling out cement to 3400', fell out of cmt. RD swivel. Pressure test csg to 600 psi (lost 200psi in 15 min) SION

**10/17/2006 07:00 - 10/17/2006 17:00**
**Last 24hr Summary**

Drive to location, conduct JSA, Interactive Tailgate Safety Meeting, & Go Program. Pressure test csg to 500 psi w/ chart for 30 min (lost 20 psi). Notify NMOGC (E.L. Gonzalez). TOH, LDDC. TIH w/ same 4 3/4" bit, & 5 1/2" csg scraper & tbg to 4225'. Tag fill @ 4195'. RU swivel, stripper rubber, clean out to RBP @ 4227'. RD stripper & swivel. SION

**10/18/2006 07:00 - 10/18/2006 17:00**
**Last 24hr Summary**

Drive to location, conduct JSA, participate in Tailgate Safety Meeting, & Go Program. TOH, LD csg scraper & bit. Pick up & TIH w/ retrieving tool. Latch in to & release RBP. TOH, LDRBP. TIH w/ 4 1/2" O.D. Gas Anchor x 30.60', 2 7/8" Pump Barrel w/ SN x 41.16', 2 7/8" Endura jt x 31.25. RU tbg testers. Continue TIH w/ & testing to 5000 psi 9 jts 2 7/8" tbg x 284.76', 5 1/2" TAC x 2.75', & 28 jts 2 7/8" tbg x 882.00'. SION

**10/19/2006 07:00 - 10/19/2006 17:00**
**Last 24hr Summary**

Drive to location, conduct JSA, Tailgate Safety Meeting, participate in Go program. RU testers, found burr on rope socket of test tool cable, RD testers. TIH w/ pump barrel, 144 jts 2 7/8" tbg (TAC 9 jts off bottom). RDBOP, set TAC, NUWH. TIH w/ standing valve, plunger x 4.00', 2- 1" D-90 rods x 50.00', 10- guided D-90 rods x 250.00', 60- 1" D-90 rods x 1500.00'. SION

10/20/2006 07:00 - 10/20/2006 17:00

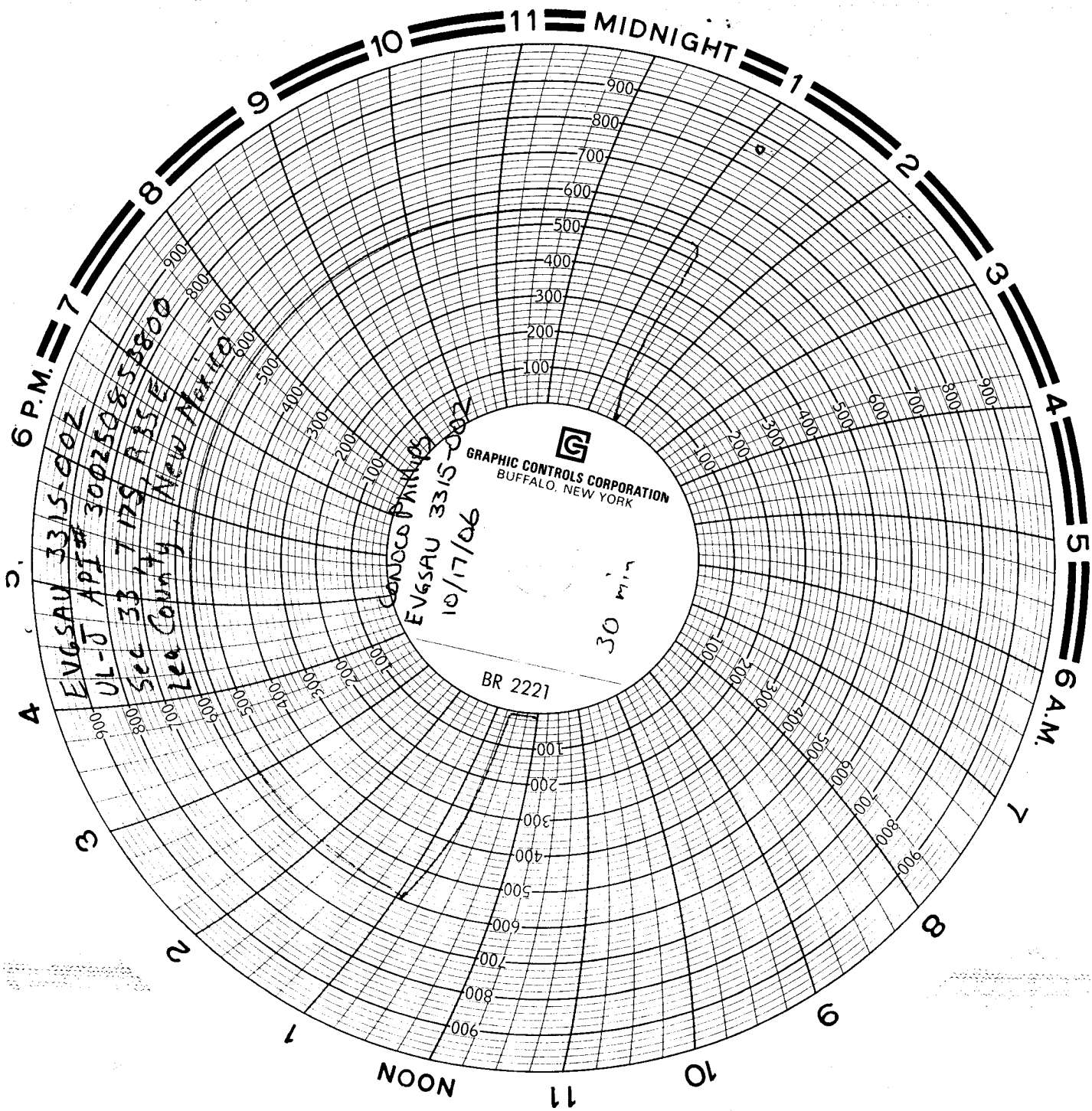
## Last 24hr Summary

Drive to location, conduct JSA, participate in Tailgate Safety Meeting, & Go program. Continue in hole w/ 109- 1" rods x 2725'. Stacked out 40' high. Load & test tbg to 500 psi. Long stroke pump....lost pressure. TOH w/ rods & BHA. NDWH, NUBOP. TOH w/ tbg & pump barrel. Found standing valve had wrong size cups & nogo. TIH w/ original pump barrel(2 1/4" x 36' w/ 4" endura pick up sub), 9 jts 2 7/8" tbg, 5 1/2" TAC, & 66 jts 2 7/8" tbg. SIOWE

10/23/2006 07:00 - 10/23/2006 17:00

## Last 24hr Summary

Drive to location, conduct JSA, Tailgate Safety Meeting, & Go program. Kill well, TIH w/ 69 jts 2 7/8" tbg (144 jts total + 1 jt endura + 4 1/2" gas anchor w/ bottom @ 4597.70) NDBOP, set TAC, NUWH. TIH w/ plunger & rods(180- 1"). Load & test tbg, long stroke pump, & space out pump. RDPU, MIRU Rotaflex to pump position. Hang polish rod onto bridle. Cycle well for proper function of pump. SION (will notify MSO & MOPU tomorrow a.m.)



76904227  
Jerald Hudson (505) 390-1560