

Submit 3 Copies To Appropriate District
Office
District I
1625 N. French Dr., Hobbs, NM 88240
District II
1301 W. Grand Ave., Artesia, NM 88210
District III
1000 Rio Brazos Rd., Aztec, NM 87410
District IV
1220 S. St. Francis Dr., Santa Fe, NM
87505

State of New Mexico
Energy, Minerals and Natural Resources

Form C-103
May 27, 2004

OIL CONSERVATION DIVISION
1220 South St. Francis Dr.
Santa Fe, NM 87505

WELL API NO. 30-025-20314
5. Indicate Type of Lease STATE <input checked="" type="checkbox"/> FEE <input type="checkbox"/>
6. State Oil & Gas Lease No. 31172
7. Lease Name or Unit Agreement Name East Vacuum GB/SA Unit Tract 2622
8. Well Number 086
9. OGRID Number 217817
10. Pool name or Wildcat Vacuum; Grayburg/San Andres

11. Elevation (Show whether DR, RKB, RT, GR, etc.)
3919' GR

Pit or Below-grade Tank Application ☐ or Closure ☐

Pit type _____ Depth to Groundwater _____ Distance from nearest fresh water well _____ Distance from nearest surface water _____

Pit Liner Thickness: _____ mil Below-Grade Tank: Volume _____ bbls; Construction Material _____

SUNDRY NOTICES AND REPORTS ON WELLS
(DO NOT USE THIS FORM FOR PROPOSALS TO DRILL OR TO DEEPEN OR PLUG BACK TO A
DIFFERENT RESERVOIR. USE "APPLICATION FOR PERMIT" (FORM C-101) FOR SUCH
PROPOSALS.)

1. Type of Well: Oil Well ☒ Gas Well ☐ Other

2. Name of Operator
ConocoPhillips Company

3. Address of Operator
3300 N. "A" St., Bldg. 6, Midland, TX 79710

4. Well Location
Unit Letter C : 990 feet from the North line and 2307 feet from the West line
Section 26 Township 17-S Range 35-E NMPM County Lea

12. Check Appropriate Box to Indicate Nature of Notice, Report or Other Data

NOTICE OF INTENTION TO:

PERFORM REMEDIAL WORK ☐ PLUG AND ABANDON ☐
TEMPORARILY ABANDON ☐ CHANGE PLANS ☐
PULL OR ALTER CASING ☐ MULTIPLE COMPL ☐

OTHER: ☐

SUBSEQUENT REPORT OF:

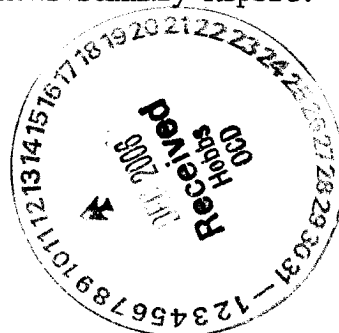
REMEDIAL WORK ☒ ALTERING CASING ☐
COMMENCE DRILLING OPNS. ☐ P AND A ☐
CASING/CEMENT JOB ☐

OTHER: ☐

13. Describe proposed or completed operations. (Clearly state all pertinent details, and give pertinent dates, including estimated date of starting any proposed work). SEE RULE 1103. For Multiple Completions: Attach wellbore diagram of proposed completion or recompletion.

09/11/06 - 11/06/06

Repaired downhole failure per attached Daily Operations Summary Report. Ran Mechanical Integrity Test, chart attached.



I hereby certify that the information above is true and complete to the best of my knowledge and belief. I further certify that any pit or below-grade tank has been/will be constructed or closed according to NMOCD guidelines ☐, a general permit ☐ or an (attached) alternative OCD-approved plan ☐.

SIGNATURE Celeste G. Dale TITLE Regulatory Specialist DATE 12/07/06

Type or print name Celeste G. Dale

E-mail address: celeste.g.dale@conocophillips.com

Telephone No. 432-688-6884

For State Use Only

APPROVED BY: Harry W. Wink TITLE FIELD REPRESENTATIVE II/STAFF MANAGER

Conditions of Approval (if any)

DEC 12 2006

Regulatory Summary

EAST VACUUM GB-SA UNIT 2622-086

REPAIR DOWNHOLE FAILURE, 9/11/2006 07:00

API / UWI	County	State/Province	Surf Loc	N/S Dist (ft)	N/S Ref	E/W Dist (ft)	E/W Ref	Job Category
300252031400	LEA	NEW MEXICO	Sec. 26, T-17S, R-35E	990.00	N	2,307.00	W	WELL INTERVENTION
Ground Elevation (ft)		Latitude (DMS)		Longitude (DMS)		Original Spud Date		Rig Release Date
3,910.00						9/25/1963		10/24/1963

9/11/2006 07:00 - 9/11/2006 17:00

Last 24hr Summary

Drive to location, conduct JSA, & Tailgate Safety Meeting. MIRUPU. Attempt to unseat rod pump, without success. Backoff rods & TOH w/ 1 1/2" Polish rod x 26', 4-1" ponys x 22', & 53-1" rods x 1325', & 14- 7/8" rods x 350'.RU Reverse Unit, attempt to kill well by pumping 10# down csg, well charging up. Attempt to bleed down pressure off csg. SIONE

9/12/2006 07:00 - 9/12/2006 17:00

Last 24hr Summary

Drive to location, conduct JSA, Tailgate Safety Meeting, & Orientation. Attempt to bleed down pressure off csg(200psi), lots of gas & oil. Pump 40 bbl 10# down csg, then another 40 to kill well. NDWH, NUBOP. Release TAC, Start out of hole w/ 2 7/8" tbg, encountered oil. RU swab line, swab tbg down flowline.RD swab. TOH w/ 58 jts 2 7/8" tbg to fish. SION

9/13/2006 07:00 - 9/13/2006 17:00

Last 24hr Summary

Drive to location, conduct JSA & Tailgate Safety Meeting. Kill well, trickle down csg. Strip rods/tbg out of hole(147 jts 2 3/8" tbg & 5 1/2" TAC, & 53- 1" D Rods, & 117- 7/8" D Rods,12- 1" Guided Rods & Rod pump. Had to saw off 4 rods to get out of hole. SION (Pump is stuck in bottom jt.)

9/14/2006 07:00 - 9/14/2006 17:00

Last 24hr Summary

Drive to location, conduct JSA, & Tailgate Safety Meeting. TIH w/ 4 3/4" bit & 5 1/2" casing scraper & 2 7/8" tbg. TFF at 4604'(44' fill). TOH, LD bit & scraper. Pick up & TIH w/ 5 1/2" RBP & Packer. Set RBP @ 4353', Packer @ 4298'. Bleed pressure off surface & intermediate. Pressure to 500 psi down tbg to test RBP. Release packer, pressure 5 1/2" to 500 psi. Lost 80 psi in 30 min. SION

9/15/2006 07:00 - 9/15/2006 17:00

Last 24hr Summary

Drive to location, conduct, JSA, TSM, & Go card. Bleed pressure off surface & Intermediate csqs (20psi). Had some oil & gas flow back. Pressure test 5 1/2" csg to 500 psi for 30 min(lost 10psi). Pump 20 bbl 10# down int. csg , apparently communicating w/ surf csg. TOH w/ & LD 10 jts 2 7/8" tbg, RIH w/ 5 stands 2 7/8" tbg out of derrick. Reverse circ. 105 bbl 10# down 5 1/2" back up through 2 7/8". RU half pit for flowback. J&M initiate one-call. Notify MSO of surf line to pit venting. SIOWE

9/18/2006 07:00 - 9/18/2006 17:00

Last 24hr Summary

Drive to location, conduct JSA, TSM, Go Card, & Orientation. 0 psi on tbg & csqs. TOH w/ 2 7/8" tbg & packer. RUWL & lubricator. RIH & run CBL from 4000' to surface. TOC behind 5 1/2" csg is @ 2150'. Possible suspicious spots are at 1700'(Gamma spike) & 130'Travel time curves in slower there & amplitude curve shifts over as well). RD lubricator & WL. TIH w/ 2 7/8" oet(146 Jts). SION

9/19/2006 07:00 - 9/19/2006 17:00

Last 24hr Summary

Drive to location, conduct JSA, Tailgate Safety Meeting, & Go Program. RU scanner eqpt. TOH, scan 2 7/8" tbg(LD 19jts-10 green, 9- red band). RD scanning eqpt. RUWL, RIH & shoot 2 holes in 5 1/2" @ 2110' (csg collar @ 2098'). COH, RDWL. Pick up & RIH w/ 5 1/2" packer, 2 7/8" SN, & approx 2000' of 2 7/8" tbg. Set packer @ 2000'. Attempt to establish circulation up intermediate csg. Pressure up to 500 psi down tbg without success. SION

9/20/2006 07:00 - 9/20/2006 17:00

Last 24hr Summary

Drive to location, conduct JSA, Tailgate Safety Meeting, & Go Program. COOH w/ tbg & packer. RU tbg testers. TIH w/ packer, testing tbg to 5000 psi. All tbg tested good.RD testers. RU hydrovac service & clean out around wellhead. (No apparent corrosion visible, had some oily dirt). Send debris to CRI. Cover void w/ blow sand. TOH with packer to and set at 2000'. Pressure down tbg to 500 psi, then surge pressure off in attempt to induce communication between prod & int csg. Pump 30 bbl 10# down int. Repeat pump & surge down tbg. SION

9/21/2006 07:00 - 9/21/2006 14:00

Last 24hr Summary

Drive to location, conduct JSA, Tailgate Safety Meeting, & Go Program. Release packer, displace tbg & csg w/ fresh water, then reset pkr @ 2000'. Alternately pressure & surge off pressure on tbg. Tie onto intermediate csg, close surface csg valve, then pump 50 bbl fresh water @ 2bpm w/ 200psi.Had very small trickle(1/10 bpm) as return up 2 7/8" tbg via shot hole @ 2110'. Tie back onto tbg & pressure to 500psi. Started getting increase in returns up int csg(1/4bpm). SION

9/22/2006 07:00 - 9/22/2006 13:00

Last 24hr Summary

Drive to location, conduct JSA, Tailgate Safety Meeting, & Go program. TOH w/ tbg & packer. TIH w/ R-4 packer to 2120'. Spot 4 bbl 15% acid across shot hole @ 2110'. TUH w/ pkr & set @ 1830'. Pressure up on tbg to 500 psi. Had 1/10bpm flow up intermediate. Release pkr, pressure down tbg against 5 1/2" to 500 psi, lost 100 psi in 4 min. Reverse out acid to reverse pit. High winds prevented further well work. SIOWE

9/25/2006 07:00 - 9/25/2006 17:00

Last 24hr Summary

Drive to location, conduct JSA, Tailgate Safety Meeting, Go Program, & Orientation. TOH w/ tbg & pkr. RUWL & lubricator. RIH to shoot 4 holes(.41"). COH w/ WL. Tie onto & pressure up to 500 psi on 5 1/2" csg without connecting up intermediate. RIH w/ WL & shoot 4 holes @ 1680'. Tie onto 5 1/2" & pressure up continually to 600 psi w/ 1/2 bpm rate.(3/8 bpm return up int). No significant rate change over the next 2 hrs. SION



Regulatory Summary

EAST VACUUM GB-SA UNIT 2622-086

9/26/2006 07:00 - 9/26/2006 17:00

Last 24hr Summary

Attend Safety Meeting @ Lea County Event Center. Drive to location, conduct JSA, Tailgate Safety Meeting, Go Program, & Orientation. RU pump truck w/ 12 bbl 15% HCL Acid, & shower trailer. TIH w/ pkr to 2120'. Spot 12 bbl acid across perf holes @ 2110', 2050', & 1680'. TOH to 1650' & set pkr. Pressure up on tbg to 1000 psi. No communication w/ intermediate. Tie onto int & pump 20 bbl fresh @ 2 bpm w/ 200 psi. No communication w/ 5 1/2". Tie back onto tbg & try to pump w/ same results. Release pkr, reverse acid to pit. SION

9/27/2006 07:00 - 9/27/2006 14:00

Last 24hr Summary

Drive to location, conduct JSA, Tailgate Safety Meeting, & Go Program. TOH, LD tbg & pkr. NDBOP, NUWH w/ 2' sub with collars above & below 2 7/8" slip type well head. Install 2" KF valve. Shut in well. Waiting for cement. RDMOPU

10/3/2006 15:30 - 10/3/2006 19:00

Last 24hr Summary

Drive to location, conduct JSA, Tailgate Safety Meeting, Go Program & Orientation. . RU cementers. Tie onto Intermediate csg, lay bleed off line to half frac tank. Open surface valve, pump 37sx Class C Neat Cement(9 bbl slurry) til cmt circulated @ half frac tank. Close Surface valve, squeeze 223 more sx class c down intermediate @ 1 1/2 bpm w/ 240 psi. Add 2% CCL for next 108 sx(358 sx total/86 bbl slurry). Pressure went sharply up to 320 psi. Cease pumping, close int valve, trap 150 psi. Shut Well in for night. Clean up cement eqpt, RDMO cementers.

10/25/2006 09:00 - 10/25/2006 16:00

Last 24hr Summary

Drive to location, conduct interactive JSA, participate in Tailgate Safety Meeting, & Go program. MIRUPU. NDWH, NUBOP. Found cement inside well head. RU reverse unit & stripper rubber. SION

10/26/2006 07:00 - 10/26/2006 17:00

Last 24hr Summary

Drive to location, Conduct JSA, participate in Tailgate Safety Meeting, & Go program. TIH w/ 4 3/4" bit & drill collars. Drill out cement from surface to 88', fell out of cement, continue in hole to 200'. TOH, stand back drill collars, LD bit. Pick up & TIH w/ 40 jts 2 7/8" OET. SION

10/27/2006 07:00 - 10/27/2006 13:00

Last 24hr Summary

Drive to location, conduct JSA, & Tailgate Safety Meeting. TIH w/ 28 jts 2 7/8" tbg(68 total) to 2128'. RU cementers. Tie onto tbg, load w/ 2 bbl 10# brine. Spot 75 sx C Neat cmt(w/ fresh water as slurry) from 2128' up to 1403'. Displace w/ 7 1/2 bbl 10#. Wash up, RD cementers. TOH w/ tbg, close BOP blinds. RU reverse unit, load & pressure csg to 500 psi. Lost no pressure in 1 hr. SIOWE

10/30/2006 07:00 - 10/30/2006 17:00

Last 24hr Summary

Drive to location, conduct JSA, participate in Tailgate safety Meeting, & Go program. TIH w/ 4 3/4" bit, 6- 3 3/4" DC, & 40 jts 2 7/8" tbg. Tag top of cmt @ 1418'. Pressure test csg to 500 psi for 15 min. Drill out to 1655'. TOH to 1600'. SION

10/31/2006 07:00 - 10/31/2006 17:00

Last 24hr Summary

Drive to location, conduct JSA, participate in Tailgate Safety Meeting, & Go program. Resume drilling out down to 2030'. TOH to 2000'. SION

11/1/2006 07:00 - 11/1/2006 17:00

Last 24hr Summary

Drive to location, conduct JSA, Tailgate Safety Meeting, participate in Go program. Drill out cement from 2030' to 2060', pressure test csg to 500 psi for 15 min. Drill out from 2060' to 2114'. Fell out of cmt @ 2114'. Pressure test csg to 500 psi for 15 min. TIH to 4300'. Reverse sand off RBP @ 4337. TOH, LDDC . TIH w/ csg scraper & bit to 2130'. RU chart recorder, pressure test csg to 500 psi for 30 min.(lost 40 psi) SION

11/2/2006 07:00 - 11/2/2006 17:00

Last 24hr Summary

Drive to location, conduct JSA, & Tailgate Safety Meeting, & Go program. Pressure test csg w/ chart for 30 min, lost 20 psi. TOH w/ scraper & bit. TIH w/ ret tool, release RBP @ 4337', TOH. LD tbg & RBP. Pick up, & TIH w/ 135 jts 2 7/8" prod. tbg. TOH in stands to 1800' as kill string. SION

11/3/2006 07:00 - 11/3/2006 17:00

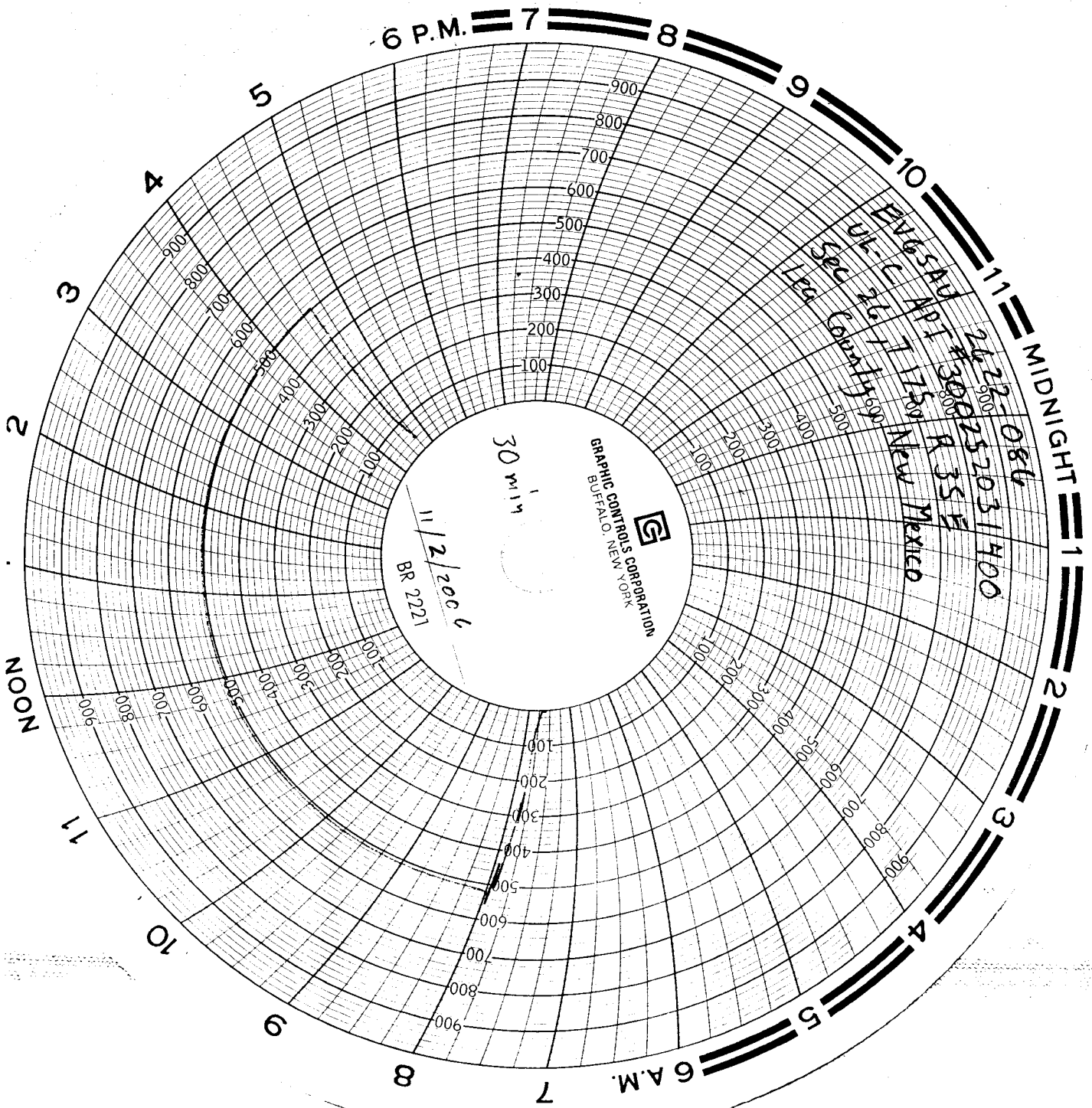
Last 24hr Summary

Drive to location, perform JSA, participate in Tailgate Safety Meeting, & Go program.TOH w/ kill string. RU testers, spooler, & ESP tech. TIH w/ sensor x 4.10', EPP Motor x 20.77', Seal x 5.58', Intake x 2.60', Pump x 13.55', 2 7/8" Lifting sub x 4.00', & 140 jts 2 7/8" tbg x 4385.14'(testing to 5000 psi). Cut cable, RD testers, spooler & tech. SIOWE

11/6/2006 07:00 - 11/6/2006 17:00

Last 24hr Summary

M. Bishop, Drive to location, conduct JSA< Tailgate Safety Meeting, & Go program. RDBOP. NUWH. Splice & install wiring to junction box. Re-plumb valves & flow line. Test ESP. Notify MSO of well status.



Conoco Phillips (Buckeye, OH)
API 300252031400
EUGASAU 2622-086
11-2-86 Drill cut cement
5 1/2 CSS w/ NUBRE 4337
Test
Jerald Hudson (505) 390-1560