

UNITED STATES  
DEPARTMENT OF THE INTERIOR  
BUREAU OF LAND MANAGEMENT

OCD-HOBBS

FORM APPROVED  
OMB No. 1004-0137  
Expires: March 31, 2007

## SUNDRY NOTICES AND REPORTS ON WELLS

Do not use this form for proposals to drill or to re-enter an abandoned well. Use Form 3160-3 (APD) for such proposals.

**SUBMIT IN TRIPLICATE- Other instructions on reverse side.**

1. Type of Well  
☐ Oil Well ☐ Gas Well ☒ Other *✓*

2. Name of Operator **ConocoPhillips Company ATTN: Celeste Dale**

3a Address  
**3300 N. "A" Street, Bldg. 6 #247 Midland, Texas 79705**

3b. Phone No. (include area code)  
**432-688-6884**

4. Location of Well (Footage, Sec., T., R., M., or Survey Description)  
**660' FNL & 1,980' FEL, Section 34, T-17-S, R-32-E, Unit Letter B**

5. Lease Serial No.

**LC 058514**

6. If Indian, Allottee or Tribe Name

7. If Unit or CA/Agreement, Name and/or No.

**8920003440 Wm 70987 A**

8. Well Name and No.

**MCA Unit #228**

9. API Well No.

**30-025-00819**

10. Field and Pool, or Exploratory Area

**Maljamar GB/SA**

11. County or Parish, State

**Lea, New Mexico**

## 12. CHECK APPROPRIATE BOX(ES) TO INDICATE NATURE OF NOTICE, REPORT, OR OTHER DATA

## TYPE OF SUBMISSION

- ☒ Notice of Intent  
☐ Subsequent Report  
☐ Final Abandonment Notice

- ☐ Acidize  
☐ Alter Casing  
☐ Casing Repair  
☐ Change Plans  
☐ Convert to Injection  
☐ Deepen  
☐ Fracture Treat  
☐ New Construction  
☒ Plug and Abandon  
☐ Plug Back

## TYPE OF ACTION

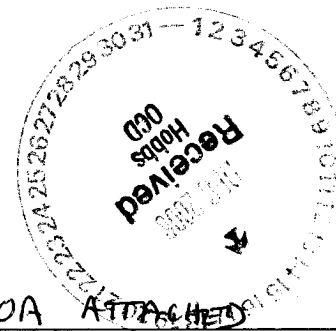
- ☐ Production (Start/Resume)  
☐ Reclamation  
☐ Recomplete  
☐ Temporarily Abandon  
☐ Water Disposal  
☐ Water Shut-Off  
☐ Well Integrity  
☐ Other

13. Describe Proposed or Completed Operation (clearly state all pertinent details, including estimated starting date of any proposed work and approximate duration thereof. If the proposal is to deepen directionally or recompleat horizontally, give subsurface locations and measured and true vertical depths of all pertinent markers and zones. Attach the Bond under which the work will be performed or provide the Bond No. on file with BLM/BIA. Required subsequent reports shall be filed within 30 days following completion of the involved operations. If the operation results in a multiple completion or recompleat in a new interval, a Form 3160-4 shall be filed once testing has been completed. Final Abandonment Notices shall be filed only after all requirements, including reclamation, have been completed, and the operator has determined that the site is ready for final inspection.)

SEE ATTACHED WELLBORE DIAGRAMS &amp; PROPOSED PLUGGING PROCEDURE

APPROVED

DEC - 5 2006

LES BABYAK  
PETROLEUM ENGINEER

SEE COA ATTACHED

14. I hereby certify that the foregoing is true and correct  
Name (Printed/Typed)

**James F. Newman, P.E.**

Signature

Title **Engineer, Triple N Services, Inc. 432.687.1994**

Date

**11/11/2006**

## THIS SPACE FOR FEDERAL OR STATE OFFICE USE

Approved by

Conditions of approval, if any, are attached. Approval of this notice does not warrant or certify that the applicant holds legal or equitable title to those rights in the subject lease which would entitle the applicant to conduct operations thereon.

Title

Date

Office

Title 18 U.S.C. Section 1001 and Title 43 U.S.C. Section 1212, make it a crime for any person knowingly and willfully to make to any department or agency of the United States any false, fictitious or fraudulent statements or representations as to any matter within its jurisdiction.

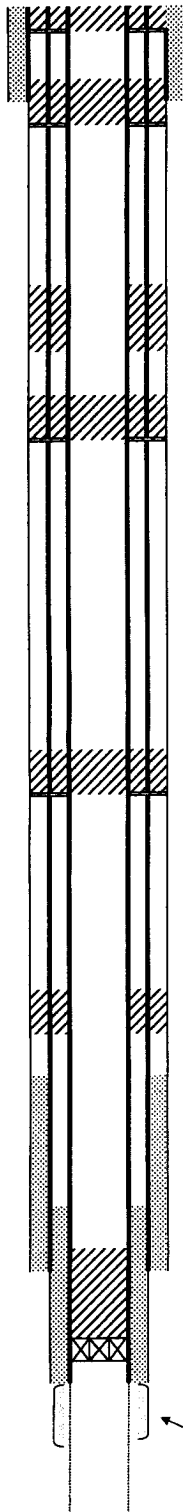
(Instructions on page 2)

GWW

# **PROPOSED PLUGGED WELLBORE SKETCH** **ConocoPhillips Company -- Mid-Continent BU / Odessa**

Date: November 11, 2006

RKB @ 3959'  
 DF @ 3958'  
 GL @ 3949'



Subarea : Maljamar  
 Lease & Well No. : MCA Unit No. 228W  
 Legal Description : 660' FNL & 1980' FEL, Sec. 34, T-17-S, R-32-E  
 County : Lea State : New Mexico  
 Field : Maljamar (Grayburg-San Andres)  
 Date Spudded : April 4, 1941 Rig Released: May 9, 1941  
 API Number : 30-025-00819  
 Status: PROPOSED PLUGGED  
 Drilled as Pearsall BX No. 2

## **Stimulation History:**

Interval	Date	Type	Gals	Lbs. Sand	Max Press	ISIP	Max Rate
3998-4198	5/10/41	530 quarts nitro					
3549-4203	6/3/58	pipe split @ 2500' - sqz w/75 sx cement					
	5/1/63	Refined Oil (RO)					
	2/10/70	Unitized and renumbered MCA Unit No. 228					
	2/11/70	Squeeze w/25 sx cement @ 79'					
	2/12/70	Squeeze w/50 sx cement @ 39'					
	2/27/70	Squeeze w/50 sx cement @ 17'					
	2/27/70	Junk in hole @ 4131'					
	3/2/70	Did not recover fish					
	3/2/70	Converted to water injection					
	12/6/75	Deepen from 4203' to 4350' (4-3/4" hole)					
	12/9/75	Set 4-1/2" casing at 3949'					
	2/9/76	Reset 4-1/2" casing at 3950'					
	2/12/76	Set 4-1/2" casing at 3949'					
	5/10/89	Set 4-1/2" Baker Loc-Set RBP @ 3850' w/k valve					
		circulate packer fluid - temporarily abandon					
	8/7/06	Evaluate for possible Queen and/or SA recompletion or P&A					



## **PROPOSED PLUGGING PROCEDURE**

- 1) 35 sx C cmt 3,850 - 3,334'
- 2) 40 sx C cmt 2,260 - 2,160', perf & sqz, TAG
- 3) 40 sx C cmt 1,210 - 1,110', perf/sqz, TAG
- 4) 50 sx C cmt 271 - 171', perf/sqz, TAG
- 5) 25 sx C cmt 50' to surface, perf/sqz/circ

## **Capacities**

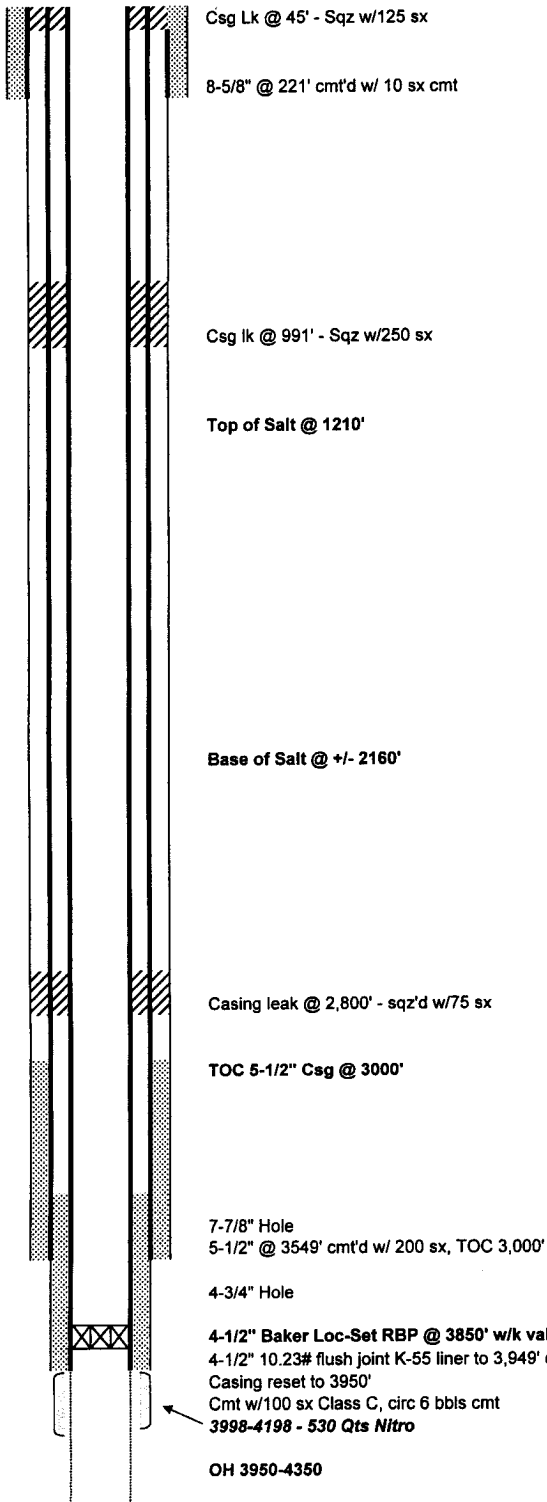
4 1/2" 9.5# csg:	10.965 ft/ft3	0.0912 ft3/ft
4 1/2" 10.23# csg:	11.167 ft/ft3	0.0895 ft3/ft
6-3/4" openhole:	4.024 ft/ft3	0.2485 ft3/ft
7-7/8" openhole:	2.957 ft/ft3	0.3382 ft3/ft
7 7/8" 24# csg:	3.715 ft/ft3	0.2691 ft3/ft
8 3/4" 20# csg:	2.733 ft/ft3	0.3659 ft3/ft
8 3/4" 24# csg:	2.797 ft/ft3	0.3575 ft3/ft

# WELLBORE SKETCH

ConocoPhillips Company - Mid-Continent BU / Odessa

Date: August 7, 2006

RKB @ 3959'  
DF @ 3958'  
GL @ 3949'



PBTD @ 3850'  
OTD @ 4203'  
NTD @ 4350'

Subarea : Maljamar  
Lease & Well No. : MCA Unit No. 228W  
Legal Description : 660' FNL & 1980' FEL, Sec. 34, T-17-S, R-32-E  
County : Lea State : New Mexico  
Field : Maljamar (Grayburg-San Andres)  
Date Spudded : April 4, 1941 Rig Released: May 9, 1941  
API Number : 30-025-00819  
Status : Temporarily Abandoned  
Drilled as Pearsall BX No. 2

## Stimulation History:

Interval	Date	Type	Gals	Lbs. Sand	Max Press	ISIP	Max Rate
3998-4198	5/10/41	530 quarts nitro pipe split @ 2500' - sqz w/75 sx cement					
3549-4203	6/3/58	Refined Oil (RO)					
	5/1/63	Unitized and renumbered MCA Unit No. 228					
	2/10/70	Squeeze w/25 sx cement @ 79'					
	2/11/70	Squeeze w/50 sx cement @ 39'					
	2/12/70	Squeeze w/50 sx cement @ 17'					
	2/27/70	Junk in hole @ 4131'					
	3/2/70	Did not recover fish					
	3/2/70	Converted to water injection					
	12/6/75	Deepen from 4203' to 4350' (4-3/4" hole)					
	12/9/75	Set 4-1/2" casing at 3949'					
	2/9/76	Reset 4-1/2" casing a@ 3950'					
	2/12/76	Set 4-1/2" casing at 3949'					
	5/10/89	Set 4-1/2" Baker Loc-Set RBP @ 3850' w/k valve					
		circulate packer fluid - temporarily abandon					
	8/7/06	Evaluate for possible Queen and/or SA recompletion or P&A					

## ConocoPhillips

### Proposed Plugging Procedure

**MCA Unit #228W**

**API #30-025-00819**

**Maljamar (Grayburg-San Andres) Field**

**Lea County, New Mexico**

Casings: 8 $\frac{5}{8}$ " casing @ 221' cmt'd w/ 10 sx  
5 $\frac{1}{2}$ " casing @ 3,549' cmt'd w/ 200 sx, TOC 3,000'  
4 $\frac{1}{2}$ " 10.23# flushjoint casing @ 3,949' cmt'd w/ 100 sx

- TA'd w/ RBP (Baker Loc-set w/ K-valve) set @ 3,850' (set 05/10/89)
  - Notify BLM & NMOCD 48 hrs prior to move in, and 4 hrs prior to plugs
  - Hold daily tailgate safety meetings w/ crews
  - Contact NM Digtess (1-800-321-2537, Account # 6778) minimum 48 hrs prior to move-in
1. Set steel pit and flow down well as needed. MIRU plugging equipment. ND wellhead and NU 6" 5,000# hydraulic BOP.
  2. RIH w/ 2 $\frac{3}{8}$ " workstring, tag PBTD. RU cementer & circulate hole w/ plugging mud. Pump 35 sx C cmt (1.32 ft<sup>3</sup>/sk yield, 46.2 ft<sup>3</sup> slurry volume, calculated fill 516' in 4 $\frac{1}{2}$ " 10.5# casing) 3,850 – 3,334'. POOH w/ tubing. **Grayburg San Andres plug**
  3. RU lubricator and RIH w/ four 2 $\frac{1}{2}$ " strip-jet perforating charges on wireline, perforate four squeeze holes @ 2,260'. POOH w/ wireline, RD lubricator.
  4. RIH w/ packer to 1,800'. Set packer and establish rate into perforations at 1,000 psi or less. Squeeze 40 sx C cmt w/ 2% CaCl<sub>2</sub> (1.32 ft<sup>3</sup>/sk yield, 52.8 ft<sup>3</sup> slurry volume, calculated fill 156' in 7 $\frac{7}{8}$ " openhole) 2,260 – 2,104'. WOC & tag this plug no deeper than 2,160', POOH w/ packer. **Base of salt plug**
  5. RIH w/ four 2 $\frac{1}{2}$ " strip-jet perforating charges on wireline, perforate four squeeze holes @ 1,210'. POOH w/ wireline.
  6. RIH w/ packer to 600'. Set packer and establish rate into perforations at 1,000 psi or less. Squeeze 40 sx C cmt w/ 2% CaCl<sub>2</sub> (1.32 ft<sup>3</sup>/sk yield, 52.8 ft<sup>3</sup> slurry volume, calculated fill 156' in 7 $\frac{7}{8}$ " openhole) 1,210 – 1,054'. WOC & tag this plug no deeper than 1,110', POOH w/ packer. **Top of salt plug**
  7. RIH w/ four 2 $\frac{1}{2}$ " strip-jet perforating charges on wireline, perforate four squeeze holes @ 271'. POOH w/ wireline.
  8. RIH w/ AD-1 packer to 60'. Set packer and establish rate into perforations at 1,000 psi or less. Squeeze 50 sx C cmt w/ 2% CaCl<sub>2</sub> (1.32 ft<sup>3</sup>/sk yield, 66.0 ft<sup>3</sup> slurry volume, calculated fill 180' in 8 $\frac{5}{8}$ " 20# casing) 271 – 100'. WOC & TAG this plug no deeper than 171'.  
**Surface casing shoe plug**

9. RIH w/ four 2½" strip-jet perforating charges on wireline, and perforate four squeeze holes @ 50'. POOH w/ wireline. ND BOP, NU wellhead. Circulate 25 sx C cement (1.32 ft<sup>3</sup>/sk yield, 33.0 ft<sup>3</sup> slurry volume, calculated fill 90' in 8½" 20# casing) 50' to surface. **surface plug**
10. RDMO location. Clean steel pit & haul fluids to disposal. Cut off wellhead and anchors, install dry hole marker. Level location. Leave location clean and free of trash.