

UNITED STATES
DEPARTMENT OF THE INTERIOR
BUREAU OF LAND MANAGEMENT

OCD-HOBBS

FORM APPROVED
OMB No. 1004-0137
Expires: March 31, 2007

SUNDRY NOTICES AND REPORTS ON WELLS

Do not use this form for proposals to drill or to re-enter an abandoned well. Use Form 3160-3 (APD) for such proposals.

SUBMIT IN TRIPLICATE- Other instructions on reverse side.

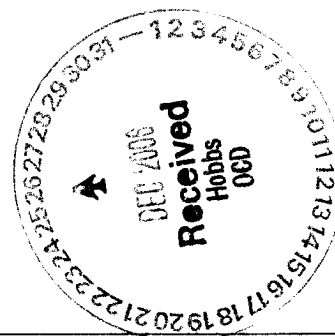
1. Type of Well <input checked="" type="checkbox"/> Oil Well <input type="checkbox"/> Gas Well <input type="checkbox"/> Other		5. Lease Serial No. LC 029405B
2. Name of Operator ConocoPhillips Company ATTN: Celeste Dale		6. If Indian, Allottee or Tribe Name
3a. Address 3300 N. "A" Street, Bldg. 6 #247 Midland, Texas 79705	3b. Phone No. (include area code) 432-688-6884	7. If Unit or CA/Agreement, Name and/or No. 8920003410 NM 7C987A
4. Location of Well (Footage, Sec., T., R., M., or Survey Description) Unit Letter "P", 25' FNL & 25' FEL, Section 19, T-17-S, R-32-E		8. Well Name and No. MCA Unit #099
		9. API Well No. 30-025-12764
		10. Field and Pool, or Exploratory Area Maljamar Grayburg/San Andres
		11. County or Parish, State Lea, New Mexico

12. CHECK APPROPRIATE BOX(ES) TO INDICATE NATURE OF NOTICE, REPORT, OR OTHER DATA

TYPE OF SUBMISSION	TYPE OF ACTION			
<input checked="" type="checkbox"/> Notice of Intent	<input type="checkbox"/> Acidize	<input type="checkbox"/> Deepen	<input type="checkbox"/> Production (Start/Resume)	<input type="checkbox"/> Water Shut-Off
<input type="checkbox"/> Subsequent Report	<input type="checkbox"/> Alter Casing	<input type="checkbox"/> Fracture Treat	<input type="checkbox"/> Reclamation	<input type="checkbox"/> Well Integrity
<input type="checkbox"/> Final Abandonment Notice	<input type="checkbox"/> Casing Repair	<input type="checkbox"/> New Construction	<input type="checkbox"/> Recomplete	<input type="checkbox"/> Other
	<input type="checkbox"/> Change Plans	<input checked="" type="checkbox"/> Plug and Abandon	<input type="checkbox"/> Temporarily Abandon	
	<input type="checkbox"/> Convert to Injection	<input type="checkbox"/> Plug Back	<input type="checkbox"/> Water Disposal	

13. Describe Proposed or Completed Operation (clearly state all pertinent details, including estimated starting date of any proposed work and approximate duration thereof. If the proposal is to deepen directionally or recompleate horizontally, give subsurface locations and measured and true vertical depths of all pertinent markers and zones. Attach the Bond under which the work will be performed or provide the Bond No. on file with BLM/BIA. Required subsequent reports shall be filed within 30 days following completion of the involved operations. If the operation results in a multiple completion or recompleation in a new interval, a Form 3160-4 shall be filed once testing has been completed. Final Abandonment Notices shall be filed only after all requirements, including reclamation, have been completed, and the operator has determined that the site is ready for final inspection.)

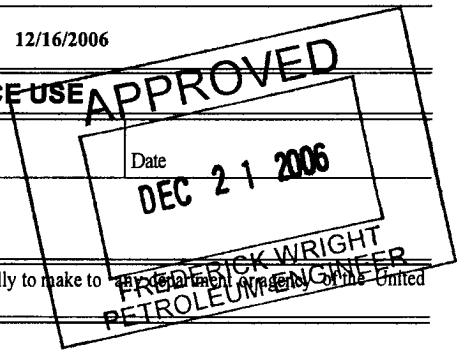
SEE ATTACHED PROPOSED PLUGGING PROCEDURE & WELLBORE DIAGRAMS



14. I hereby certify that the foregoing is true and correct Name (Printed/Typed) James F. Newman, P.E.		Title Engineer, Triple N Services, Inc.
Signature 	Date 12/16/2006	

THIS SPACE FOR FEDERAL OR STATE OFFICE USE

Approved by _____	Title _____
Conditions of approval, if any, are attached. Approval of this notice does not warrant or certify that the applicant holds legal or equitable title to those rights in the subject lease which would entitle the applicant to conduct operations thereon.	Office _____



Title 18 U.S.C. Section 1001 and Title 43 U.S.C. Section 1212, make it a crime for any person knowingly and willfully to make to States any false, fictitious or fraudulent statements or representations as to any matter within its jurisdiction.

(Instructions on page 2)

GWW

WELLBORE SKETCH

ConocoPhillips Company -- Permian Basin Business Unit

Date: December 8, 2006

RKB @
DF @ 3936'
GL @

Subarea : Hobbs
Lease & Well No. : MCA Unit No. 99
Legal Description : 25' FSL & 25' FEL, Sec. 19, T-17-S, R-32-E
County : Lea State : New Mexico
Field : Maljamar (Grayburg-San Andres)
Date Spudded : Oct. 1, 1946 Rig Released: Dec. 20, 1946
API Number : 30-025-12764
Status : Temporarily Abandoned
Drilled as Wm. Mitchell B # 12 Lease Serial No. LC-029405B

Stimulation History:

Interval	Date	Type	Gals	Lbs. Sand	Max Press	ISIP	Max Rate	Max Down
3742-3680	2/1/49	Shot with 120 quarts nitro						
	12/12/69	Converted from gas injection to producing well						
	6/15/71	Deepened to 4010'						
		Perforate openhole 3920, 3941, 3955, 3965, 3995, 4000 and 4005'						
3850-4010	6/15/71	20% Retarded Acid	2,000				300	
3630-3830	6/15/71	Gelled water	26,000	38,000			1,500	
	4/10/75	Set 4-1/2" Liner @ 3900' (10 jts)						
		Top Liner @ 3488'						
	5/15/84	Converted to water injection						
	11/12/52	Repair water flow; perforate @ 680' and squeeze with 200 sx cement						
	12/21/88	Convert to production						
		Pump 85 sx cmt 3790'-4010'						
	12/21/88	Drill out cement to 3970'						
		Perforate 6th 3668-3748, Upper 7th 3765-3794' and Lower 7th 3823-3894						
	12/26/91	Set Retrievable bridge plug @ 3570' w/equalizer valve						

680' -- Sqz'd w/200' cmt

8-5/8" 24# H-40 @ 735' cmt'd w/ 65 sx
TOC N/A, no returns
Top Salt @ 880'

Base Salt @ 1,825'

TOC 7" Csg @ 2,500' (T.S.)

Baker Loc-Set RBP @ 3570'
Top 4-1/2" LINER Hanger @ 3488'
Hole Size N / A
7" 20# H-40 @ 3600'
Cmt'd w/160 sx; TOC @ 2500' (T.S.)

Grayburg 6th
3668 3679 3692 3696 3708
3711 3715 3730 3741 3745 3748

U. 7th
3765 3774 3780 3783 3794

L. 7th
3823 3833 3840 3856 3872
3878 3882 3894

6-1/8" Hole
4-1/2" 9.5# LINER 3488-3900'
Cmt'd w/80 sx
Open Hole 3900'-3970'

PBTD @ 3570'
TD @ 4010'

Formation Tops:

Rustler	
Top Salt	880'
Base Salt	1825'
Grayburg 6th	3588'
San Andres U 7th	3750'
San Andres L 7th	3788'
San Andres 8th	3870'
San Andres 9th	3930'
Massive	3980'

ConocoPhillips

Proposed Plugging Procedure

MCA Unit #99

API #30-025-12764

Maljamar (Grayburg-San Andres) Field

Lea County, New Mexico

Casings: 8 $\frac{5}{8}$ " 24# H-40 casing @ 735' cmt'd w/ 65 sx, TOC unknown, no returns
7" 20# H-40 casing @ 3,600' cmt'd w/ 160 sx, TOC @ 2,500' by T.S.
4 $\frac{1}{2}$ " 9.5# liner 3,488 – 3,900'
Perforations 3,668 – 3,894'

- TA'd w/ RBP set @ 3,570' (set 12/26/91)
 - Notify BLM & NMOCD 48 hrs prior to move in, and 4 hrs prior to plugs
 - Hold daily tailgate safety meetings w/ crews
 - Contact NM Digtess (1-800-321-2537, Account # 6778) minimum 48 hrs prior to move-in
1. Set steel pit and flow down well as needed. MIRU plugging equipment. ND wellhead and NU 6" 5,000# hydraulic BOP.
 2. RIH w/ 2 $\frac{3}{8}$ " workstring, tag RBP. RU cementer & circulate hole w/ plugging mud. Pump 25 sx C cmt (1.32 ft³/sk yield, 33.0 ft³ slurry volume) 3,570 – 3,376'. POOH w/ tubing.
Grayburg San Andres & top of liner plug
 3. RU lubricator and RIH w/ four 1-11/16" link-jet perforating charges on wireline, and perforate four squeeze holes @ 1,925'. POOH w/ wireline.
 4. RIH w/ AD-1 packer to 1,500'. Load hole w/ mud and set packer. Establish rate into perforations at 1,500 psi or less. Squeeze 40 sx C cement w/ 2% CaCl₂ (1.32 ft³/sk yield, 52.8 ft³ slurry volume, calculated fill 156' in 7 $\frac{7}{8}$ " open hole) 1,925 – 1,769'. WOC & tag this plug no deeper than 1,825'. POOH w/ packer. If unable to establish rate at 1,500 psi or less, contact both BLM & NMOCD for balanced plug approval. **Base of salt plug**
 5. RIH w/ four 1-11/16" link-jet perforating charges on wireline, and perforate four squeeze holes @ 880'. POOH w/ wireline.
 6. RIH w/ AD-1 packer to 400'. Load hole w/ mud and set packer. Establish rate into perforations at 1,500 psi or less. Squeeze 70 sx C cement w/ 2% CaCl₂ (1.32 ft³/sk yield, 92.4 ft³ slurry volume, calculated fill 273' in 7 $\frac{7}{8}$ " open hole) 880 – 607'. WOC & tag this plug no deeper than 685'. POOH w/ packer. If unable to establish rate at 1,500 psi or less, contact both BLM & NMOCD for balanced plug approval. **Top of salt plug**
 7. RIH w/ four 1-11/16" link-jet perforating charges on wireline, and perforate four squeeze holes @ 400'. POOH w/ wireline.
 8. RIH w/ AD-1 packer to 180'. Load hole w/ mud and set packer. Establish rate into perforations at 800 psi or less. Squeeze 80 sx C cement w/ 2% CaCl₂ (1.32 ft³/sk yield, 106

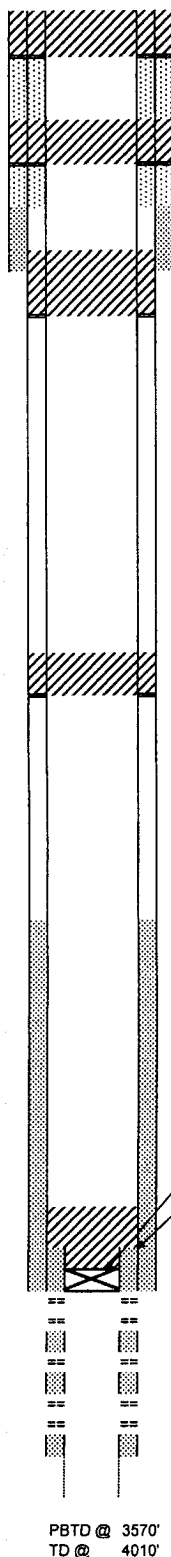
ft³ slurry volume, calculated fill 129' in 12¼" open hole) 400 - 271'. WOC & tag this plug no deeper than 300'. POOH w/ packer. If unable to establish rate at 800 psi or less, contact both BLM & NMOCD for balanced plug approval. **Freshwater plug**

9. RIH w/ four 1-11/16" link-jet perforating charges on wireline, and perforate four squeeze holes @ 100'. POOH w/ wireline.
10. ND BOP, NU wellhead. Establish rate into perforations at 500 psi or less and circulate 80 sx C cement (1.32 ft³/sk yield, 106 ft³ slurry volume, calculated fill 129' in 12¼" open hole) 100' to surface. If unable to establish rate at 500 psi or less, contact both BLM & NMOCD for balanced plug approval. **surface plug**
11. RDMO location. Clean steel pit & haul fluids to disposal. Cut off wellhead and anchors, install dry hole marker. Level location. Leave location clean and free of trash.

PROPOSED PLUGGED WELLBORE SKETCH **ConocoPhillips Company -- Permian Basin Business Unit**

Date: December 16, 2006

RKB @
 DF @ 3936'
 GL @



Perf & sqz 80 sx C cmt 100' to surface
 circulate cmt

Hole Size N / A

Perf & sqz 80 sx C cmt 400 - 300' TAG

680' -- Sqz'd w/200' cmt

8-5/8" 24# H-40 @ 735' cmt'd w/ 65 sx
 TOC N/A, no returns
 Top Salt @ 880'

Perf & sqz 70 sx C cmt 880 - 685' TAG

Base Salt @ 1,825'

Perf & sqz 40 sx C cmt 1,925 - 1,825' TAG

TOC 7" Csg @ 2,500' (T.S.)

Tag RBP @ 3,570', 25 sx C cmt 3,570 - 3,376'

Baker Loc-Set RBP @ 3570'
 Top 4-1/2" LINER Hanger @ 3488'
 Hole Size N / A
 7" 20# H-40 @ 3600'
 Cmt'd w/160 sx; TOC @ 2500' (T.S.)
Grayburg 6th

3668 3679 3692 3696 3708
 3711 3715 3730 3741 3745 3748

U. 7th

3765 3774 3780 3783 3794

L. 7th

3823 3833 3840 3856 3872

3878 3882 3894

6-1/8" Hole

4-1/2" 9.5# LINER 3488-3900'

Cmt'd w/80 sx

Open Hole 3900'-3970'

PBTD @ 3570'
 TD @ 4010'

Subarea : Hobbs
 Lease & Well No. : MCA Unit No. 99
 Legal Description : 25' FSL & 25' FEL, Sec. 19, T-17-S, R-32-E
 County : Lea State : New Mexico
 Field : Majamar (Grayburg-San Andres)
 Date Spudded : Oct. 1, 1946 Rig Released: Dec. 20, 1946
 API Number : 30-025-12764
 Status : **PROPOSED PLUGGED**
 Drilled as Wm. Mitchell B # 12 Lease Serial No. LC-029405B

Stimulation History:

Interval	Date	Type	Gals	Lbs. Sand	Max Press	ISIP	Max Rate	Down
3742-3680	2/1/49	Shot with 120 quarts nitro						
	12/12/69	Converted from gas injection to producing well						
	6/15/71	Deepened to 4010'						
		Perforate openhole 3920, 3941, 3955, 3965, 3995, 4000 and 4005'						
3850-4010	6/15/71	20% Retarded Acid	2,000				,300	
3630-3830	6/15/71	Gelled water		26,000	38,000		,1500	
	4/10/75	Set 4-1/2" Liner @ 3900' (10 jts)						
		Top Liner @ 3488'						
	5/15/84	Converted to water injection						
	11/12/52	Repair water flow; perforate @ 680' and squeeze with 200 sx cement						
	12/21/88	Convert to production						
		Pump 85 sx cmt 3790'-4010'						
		Drill out cement to 3970'						
	12/21/88	Perforate 6th 3668-3748, Ulpper 7th 3765-3794' and Lower 7th 3823-3894						
	12/26/91	Set Retrievable bridge plug @ 3570' w/equalizer valve						



PROPOSED PLUGGING PROCEDURE

- 1) Tag RBP @ 3,570', 25 sx C cmt 3,570 - 3,376'
- 2) Perf & sqz 40 sx C cmt 1,925 - 1,825' TAG
- 3) Perf & sqz 70 sx C cmt 880 - 685' TAG
- 4) Perf & sqz 80 sx C cmt 400 - 300' TAG
- 5) Perf & sqz 80 sx C cmt 100' to surface, circ cmt

Casing / Openhole Capacities

4 1/2" 9.5# csg:	10.965 ft/ft	0.0912 ft3/ft
5 1/2" 17# csg:	7.661 ft/ft	0.1305 ft3/ft
7" 20# csg:	4.399 ft/ft	0.2273 ft3/ft
7" 26# csg:	4.655 ft/ft	0.2148 ft3/ft
7 1/4" 24# csg:	3.715 ft/ft	0.2691 ft3/ft
8 5/8" 20# csg:	2.733 ft/ft	0.3659 ft3/ft
8 5/8" 24# csg:	2.797 ft/ft	0.3575 ft3/ft
8 5/8" 28# csg:	2.853 ft/ft	0.3505 ft3/ft
6 1/4" openhole:	4.024 ft/ft	0.2485 ft3/ft
7 7/8" openhole:	2.957 ft/ft	0.3382 ft3/ft
9 1/4" openhole:	2.032 ft/ft	0.4922 ft3/ft
10" openhole:	1.834 ft/ft	0.5454 ft3/ft
12 1/4" openhole:	1.222 ft/ft	0.8185 ft3/ft

Formation Tops:

Rustler	
Top Salt	880'
Base Salt	1825'
Grayburg 6th	3588'
San Andres U 7th	3750'
San Andres L 7th	3788'
San Andres 8th	3870'
San Andres 9th	3930'
Massive	3980'

SUNDRY NOTICE SPECIAL STIPULATIONS

1. Approval is granted to plug this well with the following modifications to the proposed procedure:
2. Retrieve the RBP @ 3570' and set 100' minimum cement plug @ 3650' for 7" casing shoe and perms.
3. All plugs, below the surface plug should be tagged for casing shoes and the top and base of the salt.

*****All plugs below the surface plug must be at least 100' and 25 sacks of cement.**

**ALL OF THE WORK AUTHORIZED HERE MUST BE COMPLETED WITHIN
90 DAYS.**

**Engineering
can be reached at 505-706-2779 for any variances that might be necessary.**

F Wright 12/21/06