

DISTRICT I

1625 N. FRENCH DR., BOBBS, NM 88240

DISTRICT II

1301 W. GRAND AVENUE, ARTESIA, NM 88210

DISTRICT III

1000 Rio Brazos Rd., Aztec, NM 87410

DISTRICT IV

1220 S. ST. FRANCIS DR., SANTA FE, NM 87505

State of New Mexico

Energy, Minerals and Natural Resources Department

OIL CONSERVATION DIVISION

1220 SOUTH ST. FRANCIS DR.
Santa Fe, New Mexico 87505

Form C-102

Revised JUNE 10, 2003

Submit to Appropriate District Office

State Lease - 4 Copies

Fee Lease - 3 Copies

WELL LOCATION AND ACREAGE DEDICATION PLAT

☐ AMENDED REPORT

| | | |
|-----------------------------------|--|--|
| API Number 30-025-38231 | Pool Code 22900 | Pool Name Eunice Bl-Tu-Dr, North |
| Property Code 26483 | Property Name STATE DA | Well Number 23 |
| GRID No. 873 | Operator Name APACHE CORPORATION | Elevation 3480' |

Surface Location

| UL or lot No. | Section | Township | Range | Lot Idn | Feet from the | North/South line | Feet from the | East/West line | County |
|---------------|---------|----------|-------|---------|---------------|------------------|---------------|----------------|--------|
| J | 16 | 21-S | 37-E | | 2630 | SOUTH | 1360 | EAST | LEA |

Bottom Hole Location If Different From Surface

| UL or lot No. | Section | Township | Range | Lot Idn | Feet from the | North/South line | Feet from the | East/West line | County |
|------------------------------|-----------------|--------------------|-----------|-----------------|---------------|------------------|---------------|----------------|--------|
| | | | | | | | | | |
| Dedicated Acres 40 | Joint or Infill | Consolidation Code | Order No. | NSL-5508 | | | | | |

NO ALLOWABLE WILL BE ASSIGNED TO THIS COMPLETION UNTIL ALL INTERESTS HAVE BEEN CONSOLIDATED
OR A NON-STANDARD UNIT HAS BEEN APPROVED BY THE DIVISION

| | | | |
|---|--|--|--|
| <p>GEODETIC COORDINATES NAD 27 NME</p> <p>Y=539865.2 N X=860794.2 E</p> <p>LAT.=32°28'43.54" N LONG.=103°09'48.15" W</p> | | <p>OPERATOR CERTIFICATION</p> <p>I hereby certify the the information contained herein is true and complete to the best of my knowledge and belief.</p> <p><i>Lena Williams</i> Signature</p> <p>Lena Williams Printed Name</p> <p>Engr. Tech Title</p> <p>12/27/06 Date</p> | |
| <p>SURVEYOR CERTIFICATION</p> <p>I hereby certify that the well location shown on this plat was plotted from field notes of actual surveys made by me or under my supervision and that the same is true and correct to the best of my belief.</p> <p>DECEMBER 19, 2005</p> <p>Date Surveyed: JR</p> <p>Signature & Seal of Professional Surveyor <i>Ronald J. Eidson</i> 05.11.1984</p> <p>Certificate No. GARY EIDSON 12641 RONALD J. EIDSON 3239</p> | | | |

DISTRICT I

1625 N. FRENCH DR., HOBBS, NM 88240

DISTRICT II

1301 W. GRAND AVENUE, ARTESIA, NM 88210

DISTRICT III

1000 Rio Brazos Rd., Aztec, NM 87410

DISTRICT IV

1220 S. ST. FRANCIS DR., SANTA FE, NM 87505

State of New Mexico

Energy, Minerals and Natural Resources Department

OIL CONSERVATION DIVISION

1220 SOUTH ST. FRANCIS DR.

Santa Fe, New Mexico 87505

Form C-102

Revised JUNE 10, 2003

Submit to Appropriate District Office

State Lease - 4 Copies

Fee Lease - 3 Copies

WELL LOCATION AND ACREAGE DEDICATION PLAT

☐ AMENDED REPORT

| | | | |
|---------------|-------------------------------------|-----------|--------------------|
| API Number | | Pool Code | Pool Name |
| Property Code | Property Name STATE DA | | Well Number 23 |
| OGRID No. | Operator Name APACHE CORPORATION | | Elevation 3480' |

Surface Location

| UL or lot No. | Section | Township | Range | Lot Idn | Feet from the | North/South line | Feet from the | East/West line | County |
|---------------|---------|----------|-------|---------|---------------|------------------|---------------|----------------|--------|
| J | 16 | 21-S | 37-E | | 2630 | SOUTH | 1360 | EAST | LEA |

Bottom Hole Location If Different From Surface

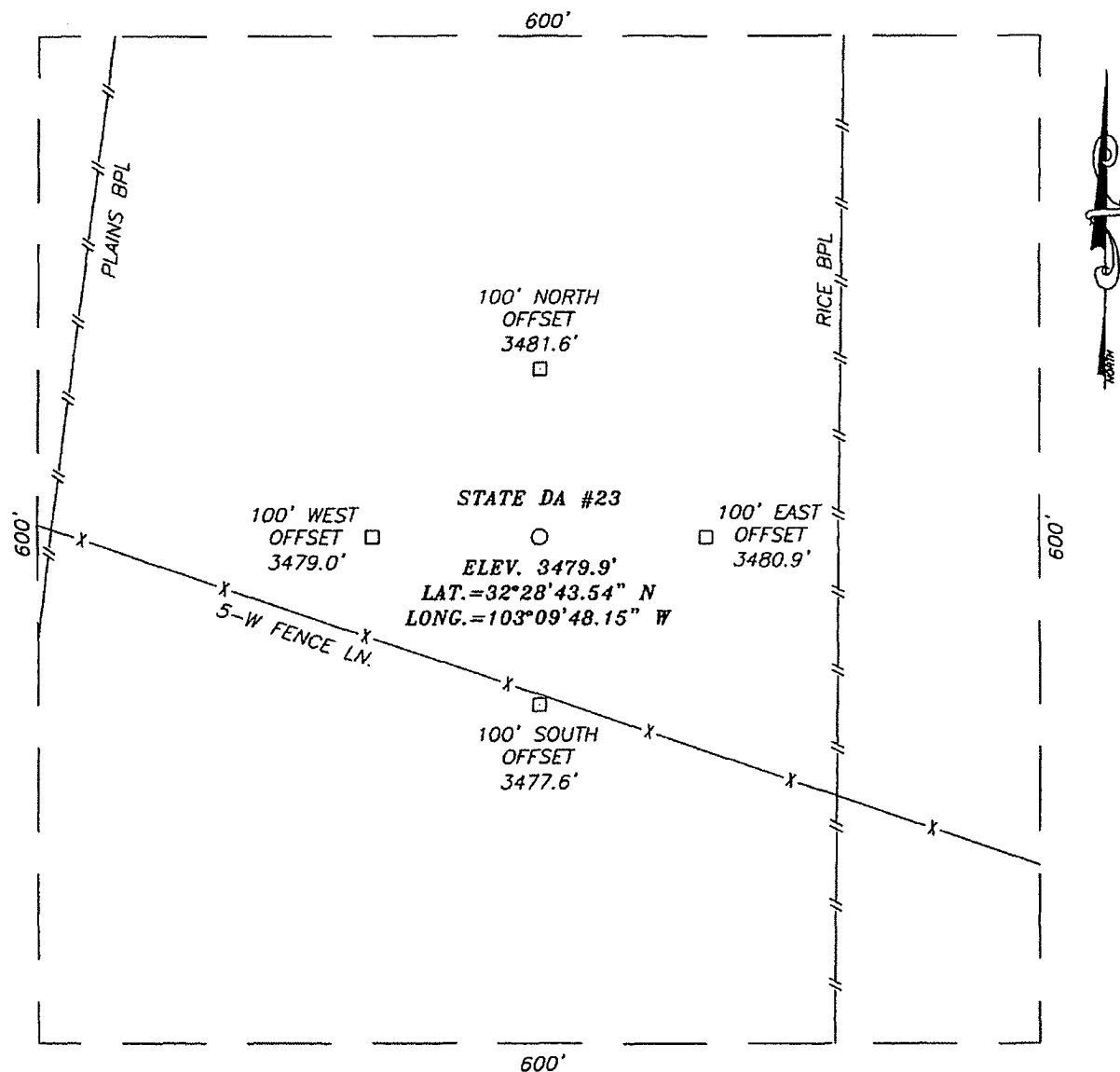
| UL or lot No. | Section | Township | Range | Lot Idn | Feet from the | North/South line | Feet from the | East/West line | County |
|---------------|---------|----------|-------|---------|---------------|------------------|---------------|----------------|--------|
| | | | | | | | | | |

| | | | |
|-----------------|-----------------|--------------------|-----------|
| Dedicated Acres | Joint or Infill | Consolidation Code | Order No. |
| | | | |

NO ALLOWABLE WILL BE ASSIGNED TO THIS COMPLETION UNTIL ALL INTERESTS HAVE BEEN CONSOLIDATED
OR A NON-STANDARD UNIT HAS BEEN APPROVED BY THE DIVISION

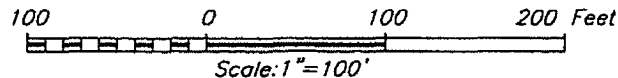
| | |
|--|---|
| | OPERATOR CERTIFICATION I hereby certify the the information contained herein is true and complete to the best of my knowledge and belief. <u>Lana Williams</u> Signature <u>Lana Williams</u> Printed Name <u>Engr. Tech</u> Title <u>12/27/06</u> Date |
| | SURVEYOR CERTIFICATION I hereby certify that the well location shown on this plat was plotted from field notes of actual surveys made by me or under my supervision, and that the same is true and correct to the best of my belief. DECEMBER 19, 2005 Date Surveyed Signature & Seal of Professional Surveyor |
| | 05.11.1984 |
| | Certificate No. GARY EIDSON 12641 RONALD J. EIDSON 3239 |

SECTION 16, TOWNSHIP 21 SOUTH, RANGE 37 EAST, N.M.P.M.,
 LEA COUNTY, NEW MEXICO



DIRECTIONS TO LOCATION

FROM THE INTERSECTION OF ST. HWY. #207 AND HILL RD., GO NW ON HILL RD. APPROX. 0.2 MILES TO A ROAD INTERSECTION. TURN LEFT (SOUTH) AND GO APPROX. 0.1 MILES TO THE SEC OF THE CHEVRON LEONARD BATTERY. LOCATION IS APPROX. 0.1 MILES SOUTH.



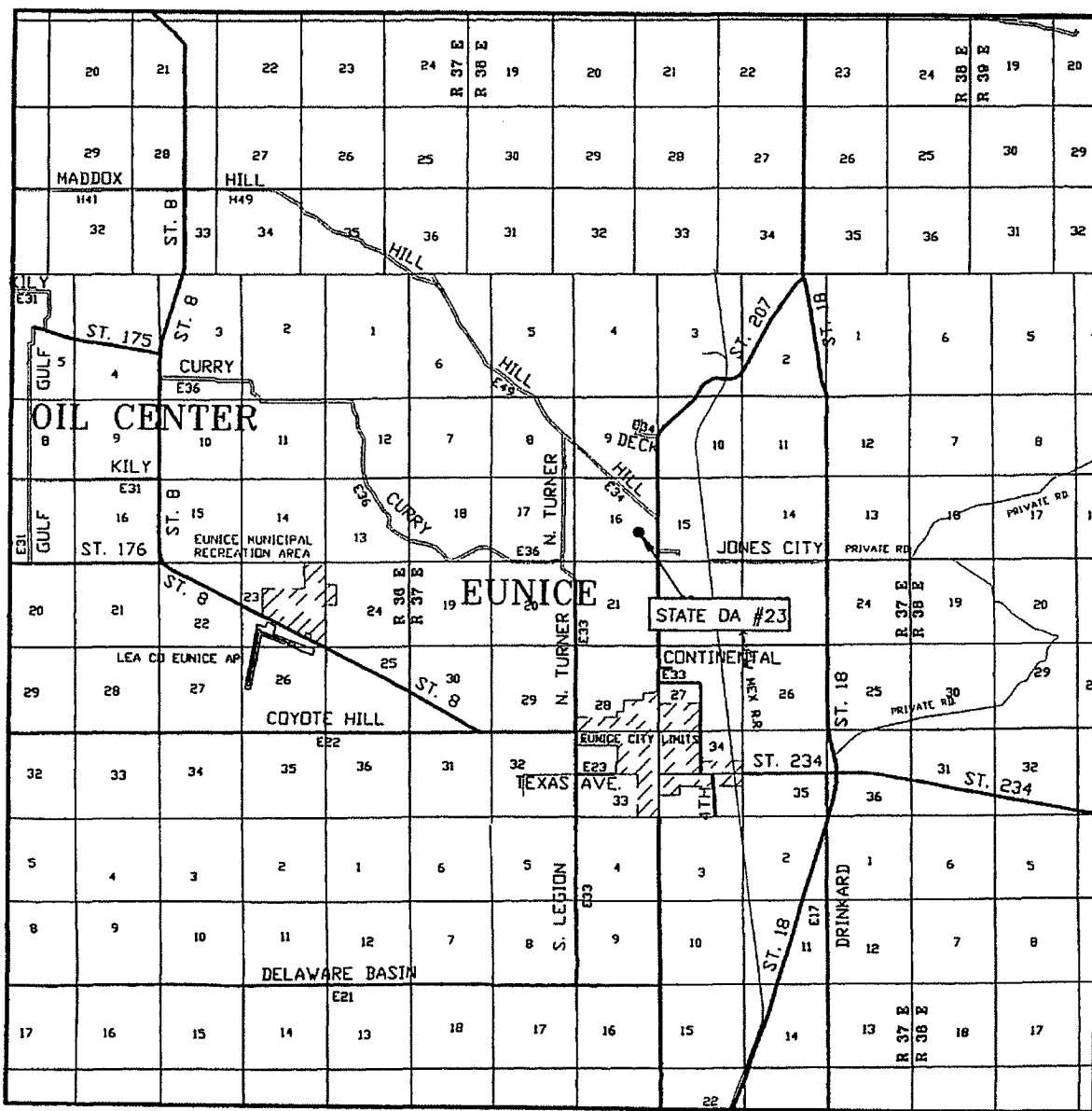
APACHE CORPORATION

STATE DA #23 WELL
 LOCATED 2630 FEET FROM THE SOUTH LINE
 AND 1360 FEET FROM THE EAST LINE OF SECTION 16,
 TOWNSHIP 21 SOUTH, RANGE 37 EAST, N.M.P.M.,
 LEA COUNTY, NEW MEXICO.

PROVIDING SURVEYING SERVICES
 SINCE 1946
JOHN WEST SURVEYING COMPANY
 412 N. DAL PASO
 HOBBS, N.M. 88240
 (505) 393-3117

| | |
|-------------------------|------------------------------------|
| Survey Date: 12/19/06 | Sheet 1 of 1 Sheets |
| W.O. Number: 05.11.1984 | Dr By: J.R. Rev 1:N/A |
| Date: 1/04/06 | Disk: CD#5 05111984 Scale: 1"=100' |

VICINITY MAP



SCALE: 1" = 2 MILES

SEC. 16 TWP. 21-S RGE. 37-E

SURVEY_____ N.M.P.M.

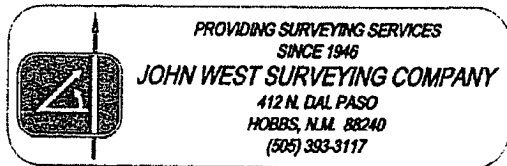
COUNTY _____ LEA _____

DESCRIPTION 2630' FSL & 1360' FEL

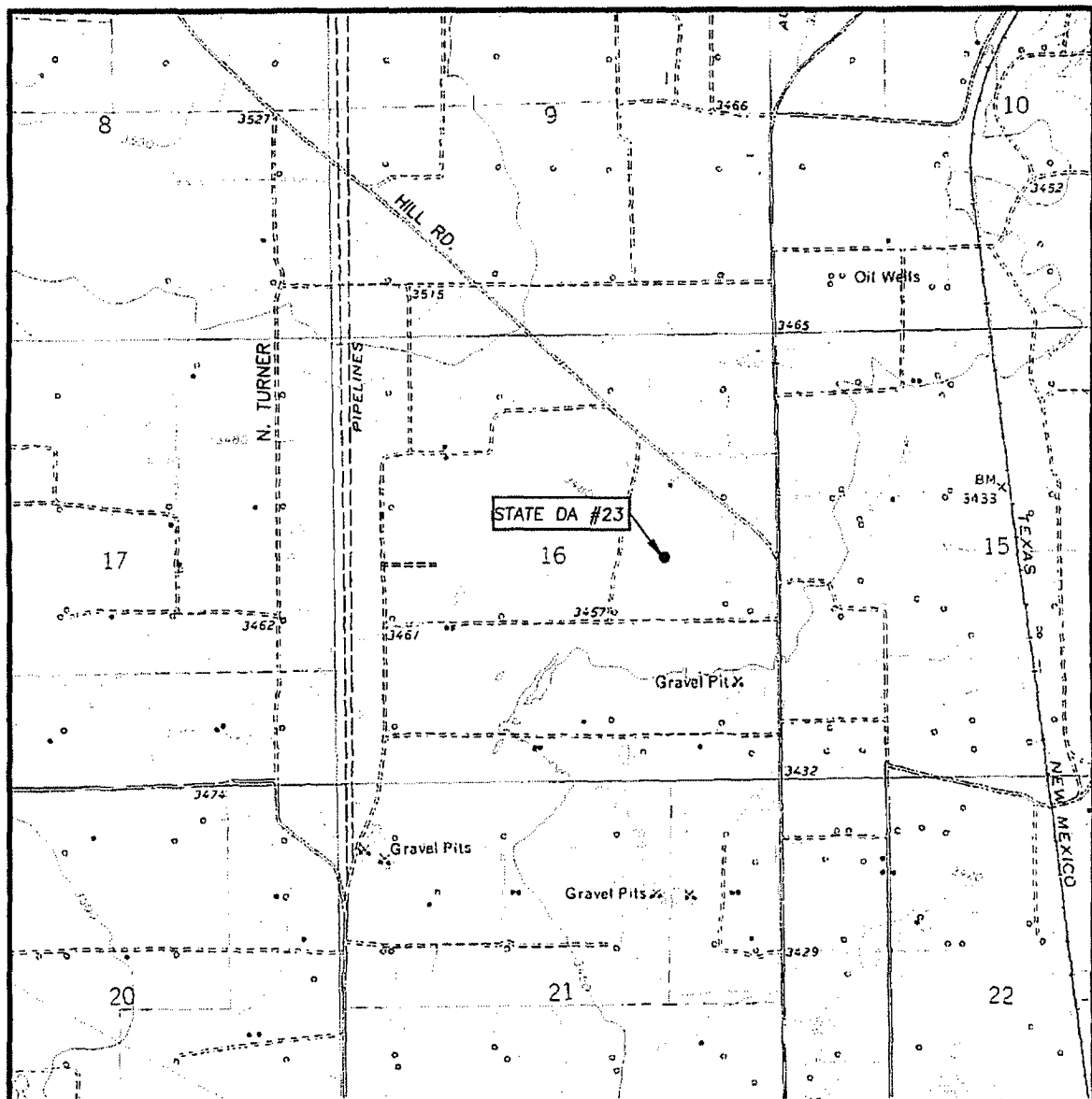
ELEVATION 3480'

OPERATOR APACHE CORPORATION

LEASE _____ STATE DA



LOCATION VERIFICATION MAP



SCALE: 1" = 2000'

CONTOUR INTERVAL:
EUNICE, N.M. - 10'

SEC. 16 TWP. 21-S RGE. 37-E

SURVEY N.M.P.M.

COUNTY LEA

DESCRIPTION 2630' FSL & 1360' FEL

ELEVATION 3480'

OPERATOR APACHE CORPORATION

LEASE STATE DA

U.S.G.S. TOPOGRAPHIC MAP
EUNICE, N.M.

