

DISTRICT I  
1625 N. FRENCH DR., HOBBS, NM 80240

DISTRICT II  
1301 W. GRAND AVENUE, ARTESIA, NM 88210

DISTRICT III  
1000 Rio Brazos Rd., Aztec, NM 87410

DISTRICT IV  
1220 S. ST. FRANCIS DR., SANTA FE, NM 87505

State of New Mexico  
Energy, Minerals and Natural Resources Department

OIL CONSERVATION DIVISION  
1220 SOUTH ST. FRANCIS DR.  
Santa Fe, New Mexico 87505

Form C-102  
Revised JUNE 10, 2003  
Submit to Appropriate District Office  
State Lease - 4 Copies  
Fee Lease - 3 Copies

WELL LOCATION AND ACREAGE DEDICATION PLAT

☐ AMENDED REPORT

API Number 30-025-36021	Pool Code 50350	Pool Name Penrose Skelly; Grayburg
Property Code 24426	Property Name HAWK A	Well Number 20
OGRID No. 873	Operator Name APACHE CORPORATION	Elevation 3522'

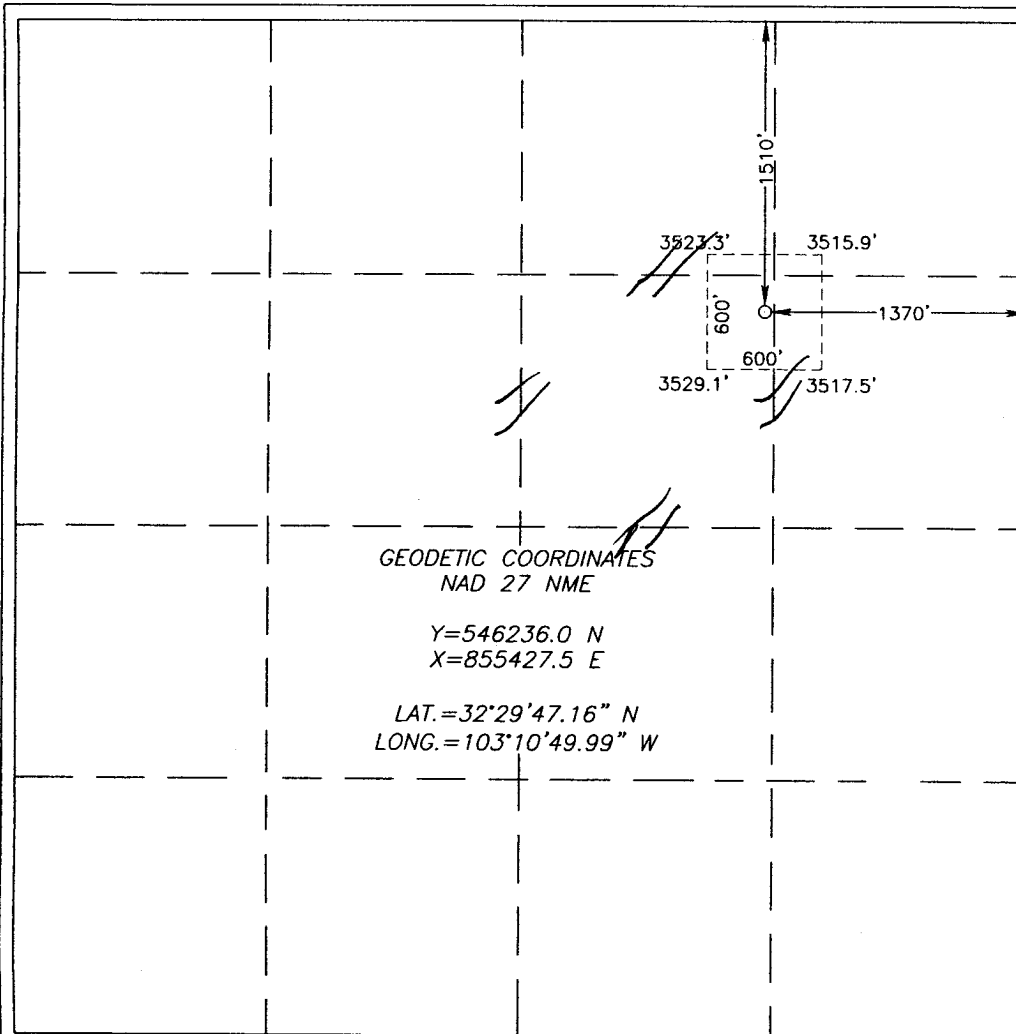
Surface Location

UL or lot No. G	Section 8	Township 21-S	Range 37-E	Lot Idn	Feet from the 1510	North/South line NORTH	Feet from the 1370	East/West line EAST	County LEA
--------------------	--------------	------------------	---------------	---------	-----------------------	---------------------------	-----------------------	------------------------	---------------

Bottom Hole Location If Different From Surface

UL or lot No.	Section	Township	Range	Lot Idn	Feet from the	North/South line	Feet from the	East/West line	County
Dedicated Acres 40	Joint or Infill	Consolidation Code	Order No. NSL-5336						

NO ALLOWABLE WILL BE ASSIGNED TO THIS COMPLETION UNTIL ALL INTERESTS HAVE BEEN CONSOLIDATED  
OR A NON-STANDARD UNIT HAS BEEN APPROVED BY THE DIVISION



OPERATOR CERTIFICATION

I hereby certify the the information  
contained herein is true and complete to the  
best of my knowledge and belief.

Signature  
Sophie Mackay  
Printed Name  
Engineering Tech  
Title  
12/27/2006  
Date

SURVEYOR CERTIFICATION

I hereby certify that the well location shown  
on this plat was plotted from field notes of  
actual surveys made by me or under my  
supervision and that the same is true and  
correct to the best of my belief.

NOVEMBER 30, 2005

Date Surveyed  
Signature & Seal of  
Professional Surveyor

12/27/05  
05.11.1822

Certification No. RONALD J. EDSON 3239  
GARY A. EDSON 12641

## DISTRICT I

1625 N. FRENCH DR., HOBBES, NM 86240

## State of New Mexico

Energy, Minerals and Natural Resources Department

## DISTRICT II

1301 W. GRAND AVENUE, ARTESIA, NM 88210

## DISTRICT III

1000 Rio Brazos Rd., Aztec, NM 87410

## DISTRICT IV

1220 S. ST. FRANCIS DR., SANTA FE, NM 87505

OIL CONSERVATION DIVISION  
1220 SOUTH ST. FRANCIS DR.  
Santa Fe, New Mexico 87505

Form C-102

Revised JUNE 10, 2003

Submit to Appropriate District Office

State Lease - 4 Copies

Fee Lease - 3 Copies

## WELL LOCATION AND ACREAGE DEDICATION PLAT

☐ AMENDED REPORT

API Number 30-025-38021	Pool Code 50350	Pool Name Penrose Skelly; Grayburg
Property Code 24426	Property Name HAWK A	Well Number 20
OGRID No. 873	Operator Name APACHE CORPORATION	Elevation 3522'

## Surface Location

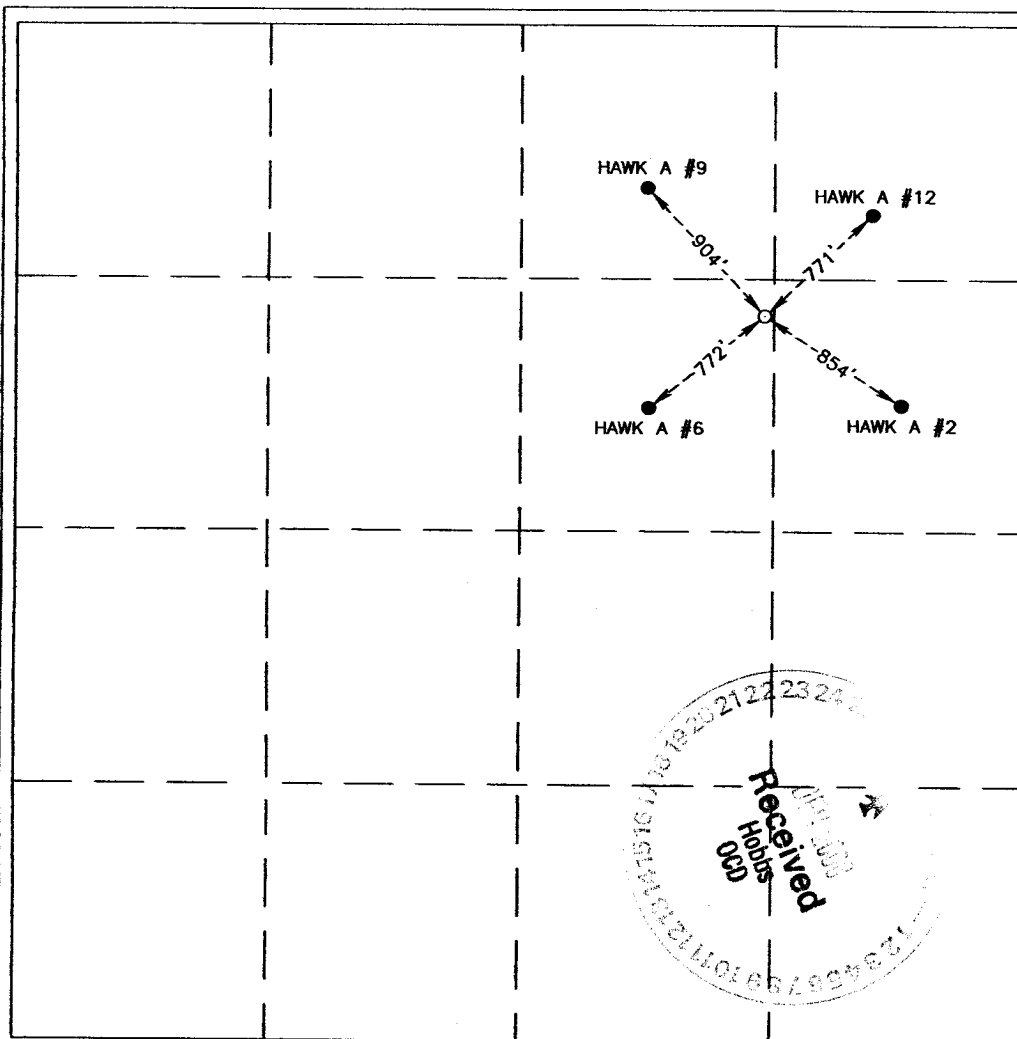
UL or lot No.	Section	Township	Range	Lot Idn	Feet from the	North/South line	Feet from the	East/West line	County
G	8	21-S	37-E		1510	NORTH	1370	EAST	LEA

## Bottom Hole Location If Different From Surface

UL or lot No.	Section	Township	Range	Lot Idn	Feet from the	North/South line	Feet from the	East/West line	County

Dedicated Acres	Joint or Infill	Consolidation Code	Order No.
40			NSL-5386 <b>&lt;SD&gt;</b>

NO ALLOWABLE WILL BE ASSIGNED TO THIS COMPLETION UNTIL ALL INTERESTS HAVE BEEN CONSOLIDATED  
OR A NON-STANDARD UNIT HAS BEEN APPROVED BY THE DIVISION



## OPERATOR CERTIFICATION

I hereby certify the the information  
contained herein is true and complete to the  
best of my knowledge and belief.

*Sophie Mackay*  
Signature

Sophie Mackay  
Printed Name

Engineering Tech  
Title

12/27/2006  
Date

## SURVEYOR CERTIFICATION

I hereby certify that the well location shown  
on this plat was plotted from field notes of  
actual surveys made by me or under my  
supervision, and that the same is true and  
correct to the best of my belief.

NOVEMBER 30, 2005

Date Surveyed JR

Signature & Seal of  
Professional Surveyor

05.11.1822

Certificate No. RONALD J. KIDSON 3239  
GARY KIDSON 12641