

District I
1625 N. French Dr., Hobbs, NM 88240
District II
1301 W. Grand Avenue, Artesia, NM 88210
District III
1000 Rio Brazos Road, Aztec, NM 87410
District IV
1220 S. St. Francis Dr., Santa Fe, NM 87505

State of New Mexico
Energy Minerals and Natural Resources

Form C-101
May 27, 2004

Oil Conservation Division
1220 South St. Francis Dr.
Santa Fe, NM 87505

Submit to appropriate District Office

☐ AMENDED REPORT

APPLICATION FOR PERMIT TO DRILL, RE-ENTER, DEEPEN, PLUGBACK, OR ADD A ZONE

| | | |
|--|---|---|
| ¹ Operator Name and Address MANZANO, LLC P.O. BOX 2107 - ROSWELL, NM 88202-2107 | | ² OGRID Number 231429 |
| ³ Property Code 36239 | ⁴ Property Name GENEVA -FEE | ⁵ API Number 30 - 041 - 20933 |
| ⁶ Well No. 1 | | |
| ⁹ Proposed Pool 1 CHAUEROO; PENN, NORTH | | ¹⁰ Proposed Pool 2 |

7 Surface Location

| | | | | | | | | | |
|--------------------|---------------|----------------|--------------|---------|-----------------------|---------------------------|-----------------------|------------------------|---------------------|
| UL or lot no. K | Section 33 | Township 6s | Range 33e | Lot Idn | Feet from the 1650 | North/South line SOUTH | Feet from the 2310 | East/West line WEST | County ROOSEVELT |
|--------------------|---------------|----------------|--------------|---------|-----------------------|---------------------------|-----------------------|------------------------|---------------------|

8 Proposed Bottom Hole Location If Different From Surface

| | | | | | | | | | |
|---------------|---------|----------|-------|---------|---------------|------------------|---------------|----------------|--------|
| UL or lot no. | Section | Township | Range | Lot Idn | Feet from the | North/South line | Feet from the | East/West line | County |
|---------------|---------|----------|-------|---------|---------------|------------------|---------------|----------------|--------|

Additional Well Information

| | | | | |
|---|--------------------------------------|---|---|---|
| ¹¹ Work Type Code N | ¹² Well Type Code R | ¹³ Cable/Rotary R | ¹⁴ Lease Type Code P | ¹⁵ Ground Level Elevation 4396" |
| ¹⁶ Multiple N | ¹⁷ Proposed Depth 9400 | ¹⁸ Formation MISSISSIPPIAN | ¹⁹ Contractor UNITED DRILLING | ²⁰ Spud Date JANUARY 10, 2007 |
| Depth to Groundwater 250' | | Distance from nearest fresh water well 2800 FEET | | Distance from nearest surface water MORE THAN ONE MILE |
| Pit: Liner: Synthetic <input checked="" type="checkbox"/> 12 mils thick / Clay <input type="checkbox"/> Pit Volume: 10000 bbls Drilling Method: Fresh Water <input type="checkbox"/> Brine <input checked="" type="checkbox"/> Diesel/Oil-based <input type="checkbox"/> Gas/Air <input type="checkbox"/> | | | | |
| Closed-Loop System <input type="checkbox"/> | | | | |

21 Proposed Casing and Cement Program

| Hole Size | Casing Size | Casing weight/foot | Setting Depth | Sacks of Cement | Estimated TOC |
|-----------|-------------|--------------------|---------------|-----------------|---------------|
| 17 1/2" | 13 3/8" | 48 #/FT | 400' | 400sx "C" | CIRCULATED |
| 11" | 8 5/8" | 32#/FT | 3700' | 1100sx "C" | CIRCULATED |
| 7 7/8" | 5 1/2" | 17#/FT | 9400' | 2000sx "C" | 3000' |
| | | | | | |
| | | | | | |

²² Describe the proposed program. If this application is to DEEPEN or PLUG BACK, give the data on the present productive zone and proposed new productive zone. Describe the blowout prevention program, if any. Use additional sheets if necessary.

Drill 17 1/2" hole to 400', run 13 3/8" 48#/ft casing to TD & cement with sufficient amount to circulate cement to surface - WOC 12hrs prior to drilling on shoe - NU 3000# WP BOPE & test to 500# w/rig pumps - Drill 11" hole to 3700', run 8 5/8" casing to TD & cement with sufficient amount to circulate to surface - WOC 12 hours prior to drilling on shoe - NU 3000# WP BOPE & test to 1000# w/rig pumps - Drill 7 7/8" hole to 9400', log well, if logs indicate productive will run 5 1/2" 17#/ft casing to TD and cement with sufficient amount to bring cement back into 8 5/8" annulus (3000' or higher) - If non-productive will plug and abandon as per NMOCD instructions. Previous drilling and production operations in this immediate area indicate that potentially hazardous amounts of H2S have not been encountered and we respectfully request that this Application for Permit To Drill be approved without a H2S Contingency Plan. NO. 2007-0001 - plan needs to be submitted but be prepared for H2S at location. (w)

Permit Expires 1 Year From Approval
Date Unless Drilling Underway

²³ I hereby certify that the information given above is true and complete to the best of my knowledge and belief. I further certify that the drilling pit will be constructed according to NMOCD guidelines ☒, a general permit ☐, or an (attached) alternative OCD-approved plan ☐.

OIL CONSERVATION DIVISION

Approved by:

Chris Williams

Printed name: Mike Hanagan

Title:

OC DISTRICT SUPERVISOR/GENERAL MANAGER

Title: Manager

Approval Date:

JAN 08 2007

Expiration Date:

E-mail Address: mhanagan@dfn.com

Date: 01/03/07

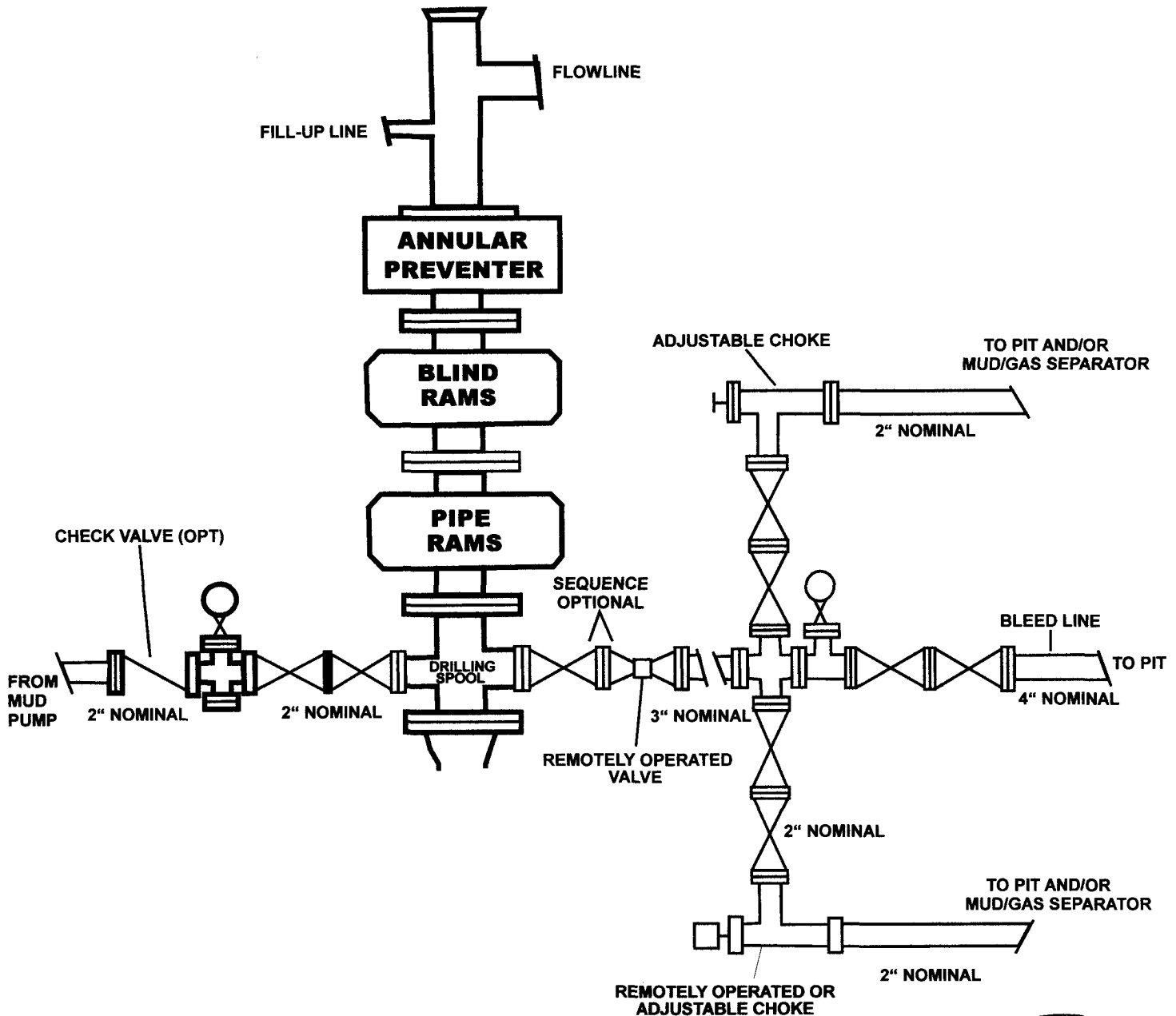
Phone: 505-623-1996

Conditions of Approval Attached ☐

Manzano Geneva Fee #1

BOP DIAGRAM

3000# SYSTEM



DISTRICT I
1625 N. FRENCH DR., HOBBES, NM 88240

State of New Mexico
Energy, Minerals and Natural Resources Department

DISTRICT II
1301 W. GRAND AVENUE, ARTESIA, NM 88210

OIL CONSERVATION DIVISION
1220 SOUTH ST. FRANCIS DR.
Santa Fe, New Mexico 87505

Form C-102
Revised October 12, 2005
Submit to Appropriate District Office
State Lease - 4 Copies
Fee Lease - 3 Copies

DISTRICT III
1000 Rio Brazos Rd., Aztec, NM 87410

DISTRICT IV
1220 S. ST. FRANCIS DR., SANTA FE, NM 87505

WELL LOCATION AND ACREAGE DEDICATION PLAT

☐ AMENDED REPORT

| | | |
|-----------------------------------|--------------------------------------|--|
| API Number 30-041-20933 | Pool Code 12020 | Pool Name CHAUVERDO; PERMO PENN, NORTH |
| Property Code 36239 | Property Name GENEVA FEE | Well Number 1 |
| OGRID No. 231429 | Operator Name MANZANO, LLC | Elevation 4396' |

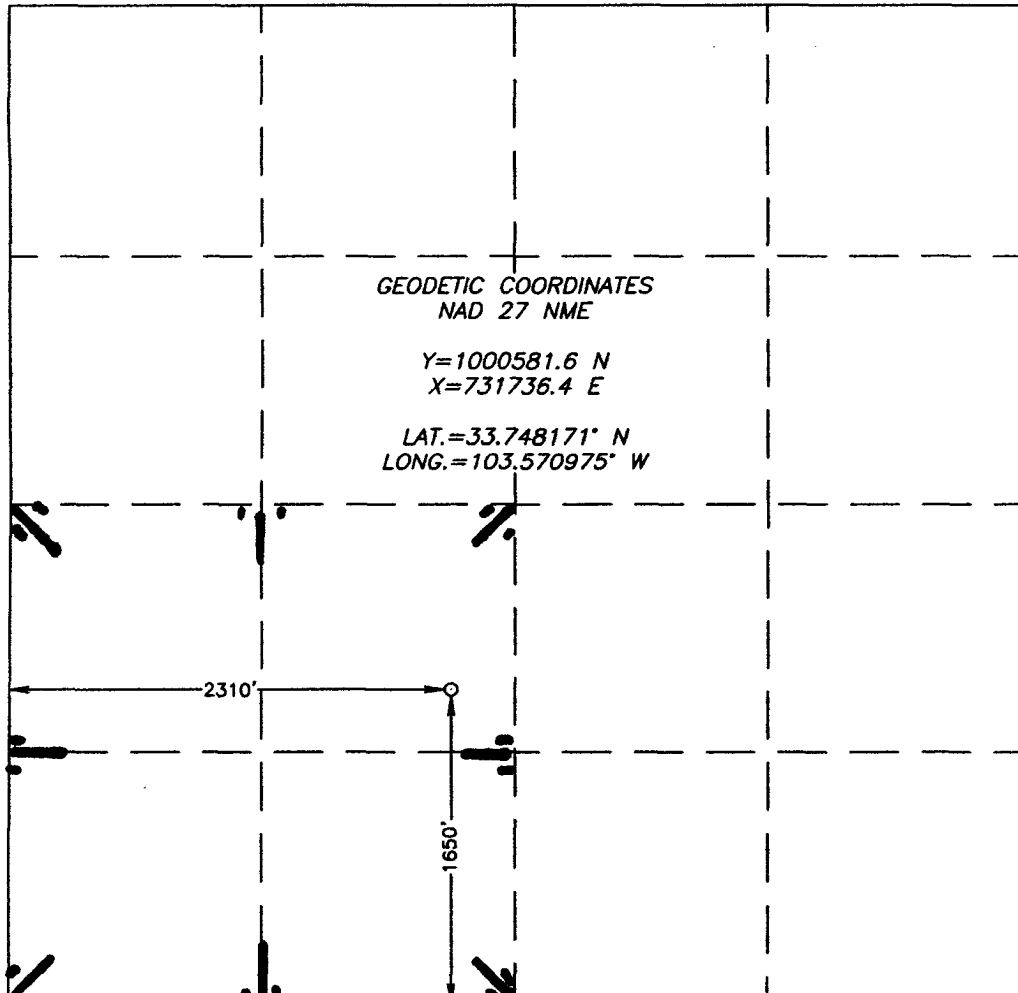
Surface Location

| UL or lot No. | Section | Township | Range | Lot Idn | Feet from the | North/South line | Feet from the | East/West line | County |
|---------------|---------|----------|-------|---------|---------------|------------------|---------------|----------------|-----------|
| K | 33 | 6-S | 33-E | | 1650 | SOUTH | 2310 | WEST | ROOSEVELT |

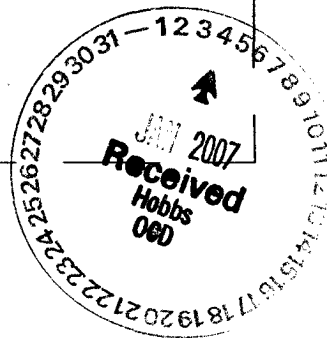
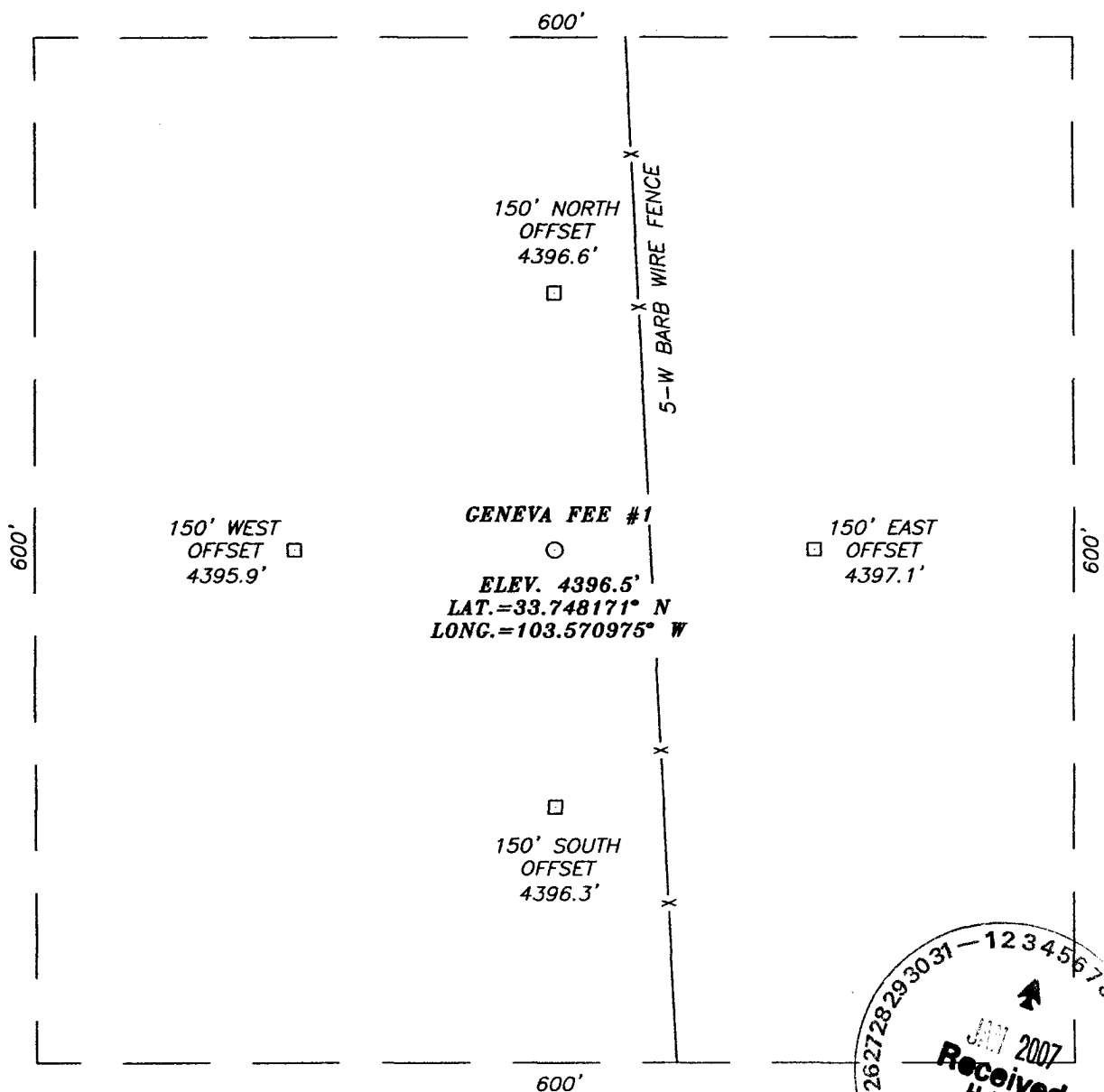
Bottom Hole Location If Different From Surface

| UL or lot No. | Section | Township | Range | Lot Idn | Feet from the | North/South line | Feet from the | East/West line | County |
|-------------------------------|-----------------|--------------------|-----------|---------|---------------|------------------|---------------|----------------|--------|
| | | | | | | | | | |
| Dedicated Acres 160 | Joint or Infill | Consolidation Code | Order No. | | | | | | |

NO ALLOWABLE WILL BE ASSIGNED TO THIS COMPLETION UNTIL ALL INTERESTS HAVE BEEN CONSOLIDATED
OR A NON-STANDARD UNIT HAS BEEN APPROVED BY THE DIVISION

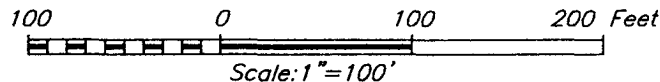
| | |
|--|--|
| <p>GEODETIC COORDINATES NAD 27 NME Y=1000581.6 N X=731736.4 E LAT.=33.748171° N LONG.=103.570975° W</p>  | <p>OPERATOR CERTIFICATION</p> <p>I hereby certify that the information herein is true and complete to the best of my knowledge and belief, and that this organization either owns a working interest or unleased mineral interest in the land including the proposed bottom hole location or has a right to drill this well at this location pursuant to a contract with an owner of such mineral or working interest, or to a voluntary pooling agreement or a compulsory pooling order heretofore entered by the division.</p> <p><i>Mike Hanagan</i> 12/31/06 Signature Date MIKE HANAGAN Printed Name</p> <p>SURVEYOR CERTIFICATION</p> <p>I hereby certify that the well location shown on this plat was plotted from field notes of actual surveys made by me or under my supervision, and that the same is true and correct to the best of my belief.</p> <p>DECEMBER 21, 2006</p> <p>Date Surveyed AR Signature & Seal of Professional Surveyor <i>Gary B. Edson</i> 1/3/07 06.11.1991 Certificate No. GARY EDSON 12841</p> |
|--|--|

SECTION 33, TOWNSHIP 6 SOUTH, RANGE 33 EAST, N.M.P.M.,
 ROOSEVELT COUNTY, NEW MEXICO



DIRECTIONS TO LOCATION

FROM THE INTERSECTION OF U.S. HWY. #206 AND SOUTH ROOSEVELT CO. RD. #34 GO WEST ON CO. RD. #34 FOR APPROX. 14.6 MILES. THIS LOCATION IS NORTH APPROX. 1650 FEET IN PASTURE.



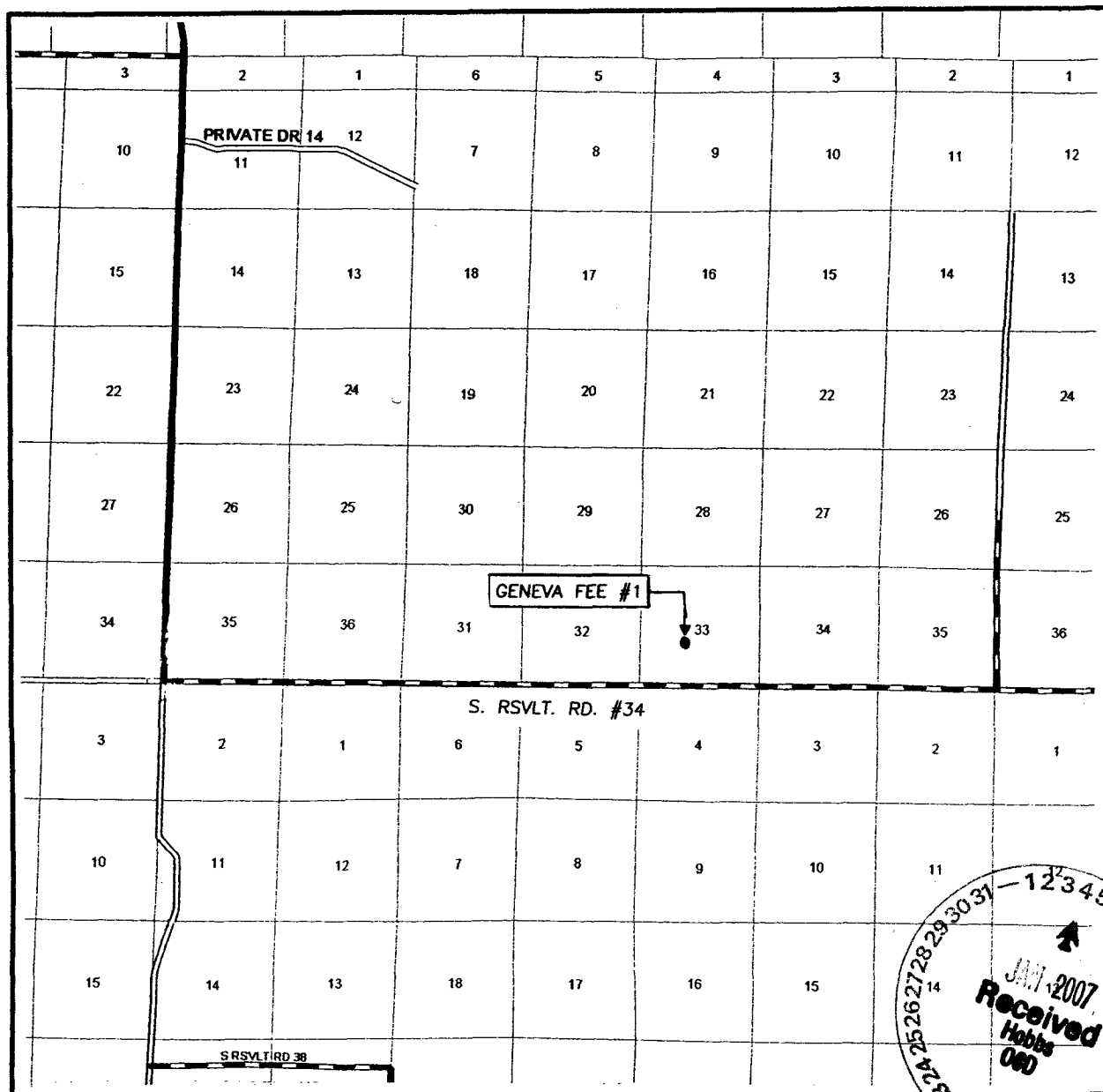
PROVIDING SURVEYING SERVICES
 SINCE 1946
JOHN WEST SURVEYING COMPANY
 412 N. DAL PASO
 HOBBS, N.M. 88240
 (505) 393-3117

MANZANO, LLC

GENEVA FEE #1 WELL
 LOCATED 1650 FEET FROM THE SOUTH LINE
 AND 2310 FEET FROM THE WEST LINE OF SECTION 33,
 TOWNSHIP 6 SOUTH, RANGE 33 EAST, N.M.P.M.,
 ROOSEVELT COUNTY, NEW MEXICO.

| | |
|-------------------------|---------------------|
| Survey Date: 12/21/06 | Sheet 1 of 1 Sheets |
| W.O. Number: 06.11.1991 | Dr By: AR |
| Date: 12/28/06 | Disk: CD#5 |
| 06111991 | Scale: 1"=100' |

VICINITY MAP



SCALE: 1" = 1 MILES

SEC. 33 TWP. 6-S RGE. 33-E

SURVEY N.M.P.M.

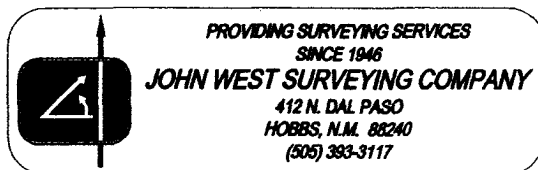
COUNTY ROOSEVELT STATE NEW MEXICO

DESCRIPTION 1650' FSL & 2310' FWL

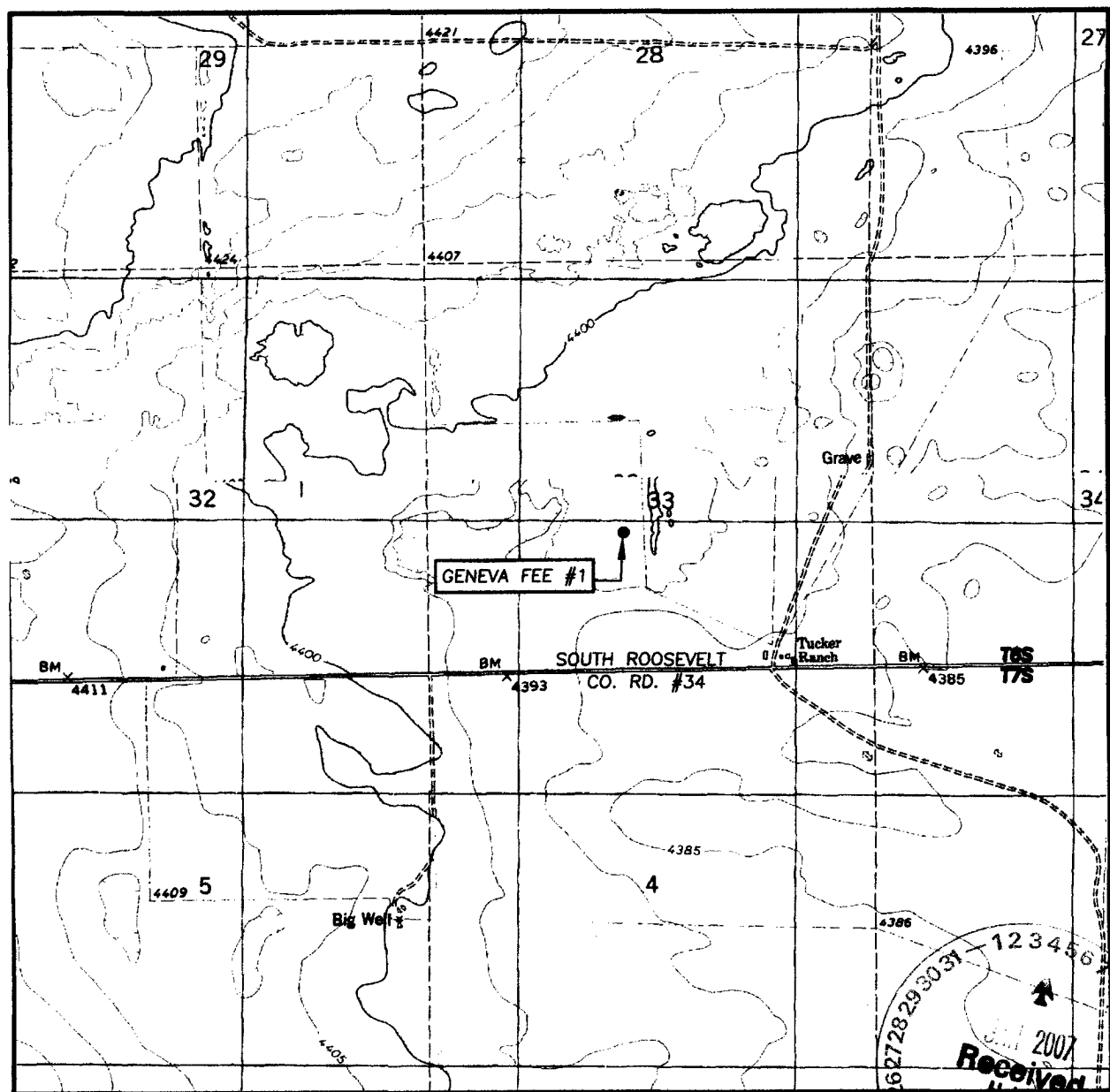
ELEVATION 4396'

OPERATOR MANZANO, LLC

LEASE GENEVA FEE



LOCATION VERIFICATION MAP



SCALE: 1" = 2000'

CONTOUR INTERVAL:
BUTTON MESA N.E., N.M. - 5'

SEC. 33 TWP. 6-S RGE. 33-E

SURVEY N.M.P.M.

COUNTY ROOSEVELT STATE NEW MEXICO

DESCRIPTION 1650' FSL & 2310' FWL

ELEVATION 4396'

OPERATOR MANZANO, LLC

LEASE GENEVA FEE

U.S.G.S. TOPOGRAPHIC MAP
BUTTON MESA NE, N.M.

