

DISTRICT I
1625 N. FRENCH DR., BOBES, NM 88240

State of New Mexico
Energy, Minerals and Natural Resources Department

DISTRICT II
1301 W. GRAND AVENUE, ARTESIA, NM 88210

DISTRICT III
1000 Rio Brazos Rd., Aztec, NM 87410

OIL CONSERVATION DIVISION
1220 SOUTH ST. FRANCIS DR.
Santa Fe, New Mexico 87505

Form C-102
Revised October 12, 2005
Submit to Appropriate District Office
State Lease - 4 Copies
Fee Lease - 3 Copies

DISTRICT IV
1220 S. ST. FRANCIS DR., SANTA FE, NM 87505

WELL LOCATION AND ACREAGE DEDICATION PLAT

☐ AMENDED REPORT

API Number 30-025-38224		Pool Code	Pool Name
Property Code 23110	Property Name RINEWALT		Well Number 8
OGRID No. 873	Operator Name APACHE CORPORATION		Elevation 3456'

Surface Location

UL or lot No. C/3	Section 4	Township 22-S	Range 37-E	Lot Idn	Feet from the 1290	North/South line NORTH	Feet from the 2580	East/West line WEST	County LEA
-----------------------------	---------------------	-------------------------	----------------------	---------	------------------------------	----------------------------------	------------------------------	-------------------------------	----------------------

Bottom Hole Location If Different From Surface

UL or lot No.	Section	Township	Range	Lot Idn	Feet from the	North/South line	Feet from the	East/West line	County
Dedicated Acres 40		Joint or Infill	Consolidation Code	Order No. NSL-5493					

NO ALLOWABLE WILL BE ASSIGNED TO THIS COMPLETION UNTIL ALL INTERESTS HAVE BEEN CONSOLIDATED
OR A NON-STANDARD UNIT HAS BEEN APPROVED BY THE DIVISION

LOT 4	LOT 3	LOT 2	LOT 1
GEODETIC COORDINATES NAD 27 NME Y=520093.5 N X=859662.2 E LAT.=32.424457° N LONG.=103.167746° W LAT.=32°25'28.05" N LONG.=103°10'03.88" W			
OPERATOR CERTIFICATION I hereby certify that the information herein is true and complete to the best of my knowledge and belief, and that this organization either owns a working interest or unleased mineral interest in the land including the proposed bottom hole location or has a right to drill this well at this location pursuant to a contract with an owner of such mineral or working interest, or to a voluntary pooling agreement or a compulsory pooling order heretofore entered by the division. Signature _____ Date _____ Lana Williams Printed Name			
SURVEYOR CERTIFICATION I hereby certify that the well location shown on this plat was plotted from field notes of actual surveys made by me or under my supervision, and that the same is true and correct to the best of my belief. JUNE 16, 2006 Date Surveyed _____ LA Signature & Seal of Professional Surveyor _____ Certification No. GARY EIDSON 12641 RONALD J. EIDSON 3239			

DISTRICT I
1626 N. FRENCH DR., HOBBS, NM 88240

DISTRICT II
1301 W. GRAND AVENUE, ARTESIA, NM 88210

DISTRICT III
1000 Rio Brazos Rd., Aztec, NM 87410

DISTRICT IV
1220 S. ST. FRANCIS DR., SANTA FE, NM 87505

State of New Mexico
Energy, Minerals and Natural Resources Department

OIL CONSERVATION DIVISION
1220 SOUTH ST. FRANCIS DR.
Santa Fe, New Mexico 87505

Form C-102
Revised October 12, 2005
Submit to Appropriate District Office
State Lease - 4 Copies
Fee Lease - 3 Copies

WELL LOCATION AND ACREAGE DEDICATION PLAT

☐ AMENDED REPORT

API Number		Pool Code	Pool Name
Property Code	Property Name RINEWALT		Well Number 8
OGRID No.	Operator Name APACHE CORPORATION		Elevation 3456'

Surface Location

UL or lot No.	Section	Township	Range	Lot Idn	Feet from the	North/South line	Feet from the	East/West line	County
3	4	22-S	37-E		1290	NORTH	2580	WEST	LEA

Bottom Hole Location If Different From Surface

UL or lot No.	Section	Township	Range	Lot Idn	Feet from the	North/South line	Feet from the	East/West line	County
Dedicated Acres		Joint or Infill	Consolidation Code	Order No.					

NO ALLOWABLE WILL BE ASSIGNED TO THIS COMPLETION UNTIL ALL INTERESTS HAVE BEEN CONSOLIDATED
OR A NON-STANDARD UNIT HAS BEEN APPROVED BY THE DIVISION

LOT 4	LOT 3 39.86 AC	LOT 2	LOT 1
39.91 AC	RINEWALT #4 785' RINEWALT #7 795' RINEWALT #3 911'	39.80 AC	39.75 AC

OPERATOR CERTIFICATION

I hereby certify that the information herein is true and complete to the best of my knowledge and belief, and that this organization either owns a working interest or unleased mineral interest in the land including the proposed bottom hole location or has a right to drill this well at this location pursuant to a contract with an owner of such mineral or working interest, or to a voluntary pooling agreement or a compulsory pooling order heretofore entered by the division.

Lana Williams
Signature Date
Lana Williams
Printed Name

SURVEYOR CERTIFICATION

I hereby certify that the well location shown on this plat was plotted from field notes of actual surveys made by me or under my supervision, and that the same is true and correct to the best of my belief.

JUNE 16, 2006

Date Surveyed LA
Signature & Seal of Professional Surveyor

06.11.0975

Certificate No. GARY EIDSON 12641
RONALD J. EIDSON 3239

NEW MEXICO

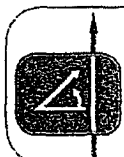


FROM THE INTERSECTION OF ST. HWY. #207 AND
CO. RD. E-23 (TEXAS AVE.) GO SOUTH ON HWY
#207 APPROX. 1.0 MILE. TURN RIGHT (THROUGH
CATTLE GUARD), AND GO WEST APPROX. 0.4
MILES. TURN RIGHT AND GO NORTH APPROX. 0.2
MILES. TURN LEFT AND GO WEST ON PIPELINE
ROAD APPROX. 0.15 MILES. THIS LOCATION IS
APPROX. 125 FEET NORTH OF PIPELINE ROAD.



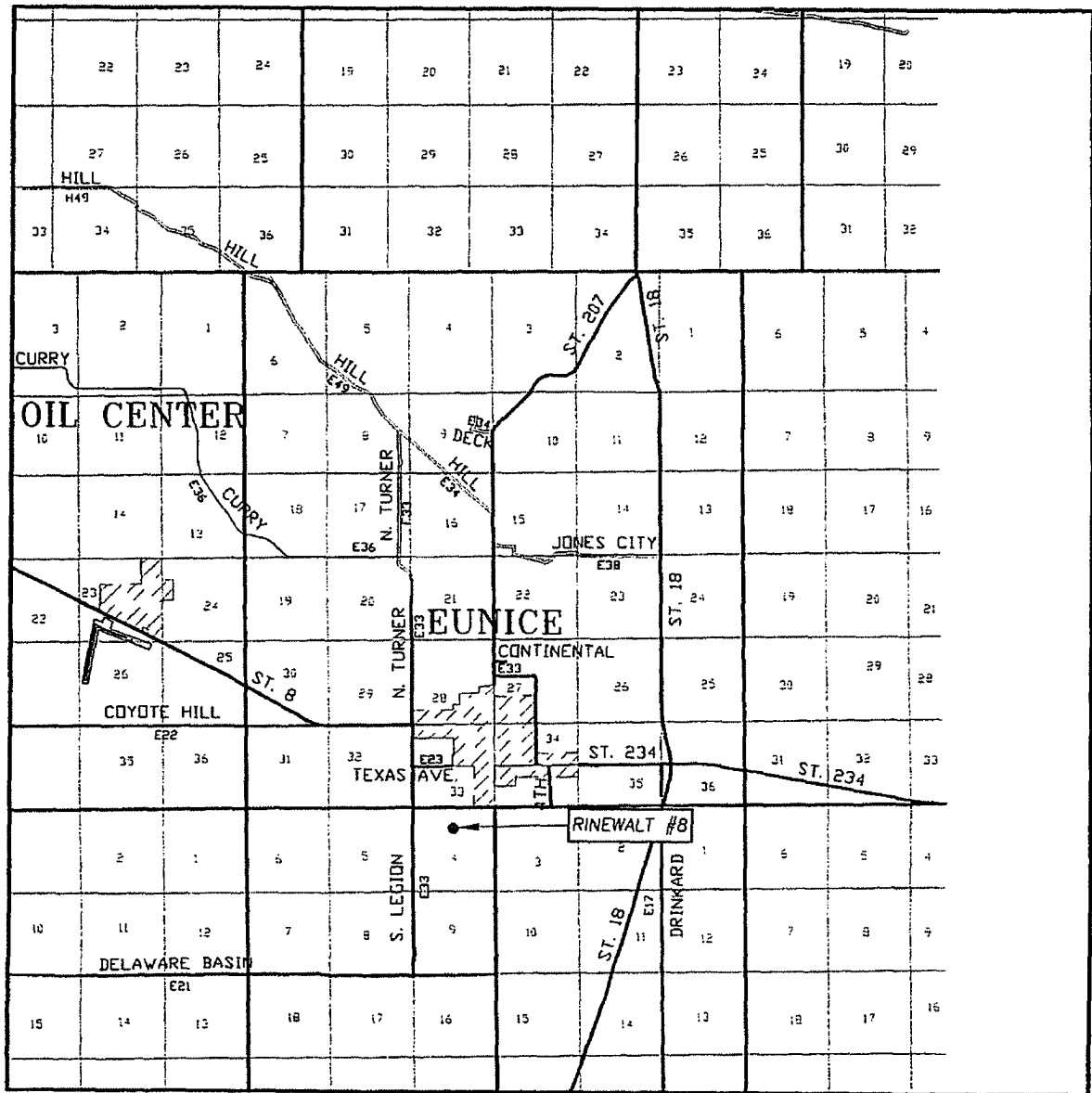
RINEWALT #8
LOCATED 1290 FEET FROM THE NORTH LINE
AND 2580 FEET FROM THE WEST LINE OF SECTION 4,
TOWNSHIP 22 SOUTH, RANGE 37 EAST, N.M.P.M.,
LEA COUNTY, NEW MEXICO.

Survey Date: 6/16/06		Sheet 1 of 1 Sheets	
W.O. Number: 06.11.0975		Dr By: LA	Rev 1:N/A
Date: 6/27/06	Disk: CD#5	06110975	Scale: 1"=100'



**PROVIDING SURVEYING SERVICES
SINCE 1948
JOHN WEST SURVEYING COMPANY
412 N. DAL PASO
HOBBS, N.M. 88240
(505) 393-3117**

VICINITY MAP



SCALE: 1" = 2 MILES

SEC. 4 TWP. 22-S. RGE. 37-E

SURVEY N.M.P.M.

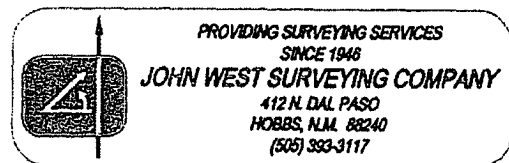
COUNTY LEA STATE NEW MEXICO

DESCRIPTION 1290' FNL & 2580' FWL

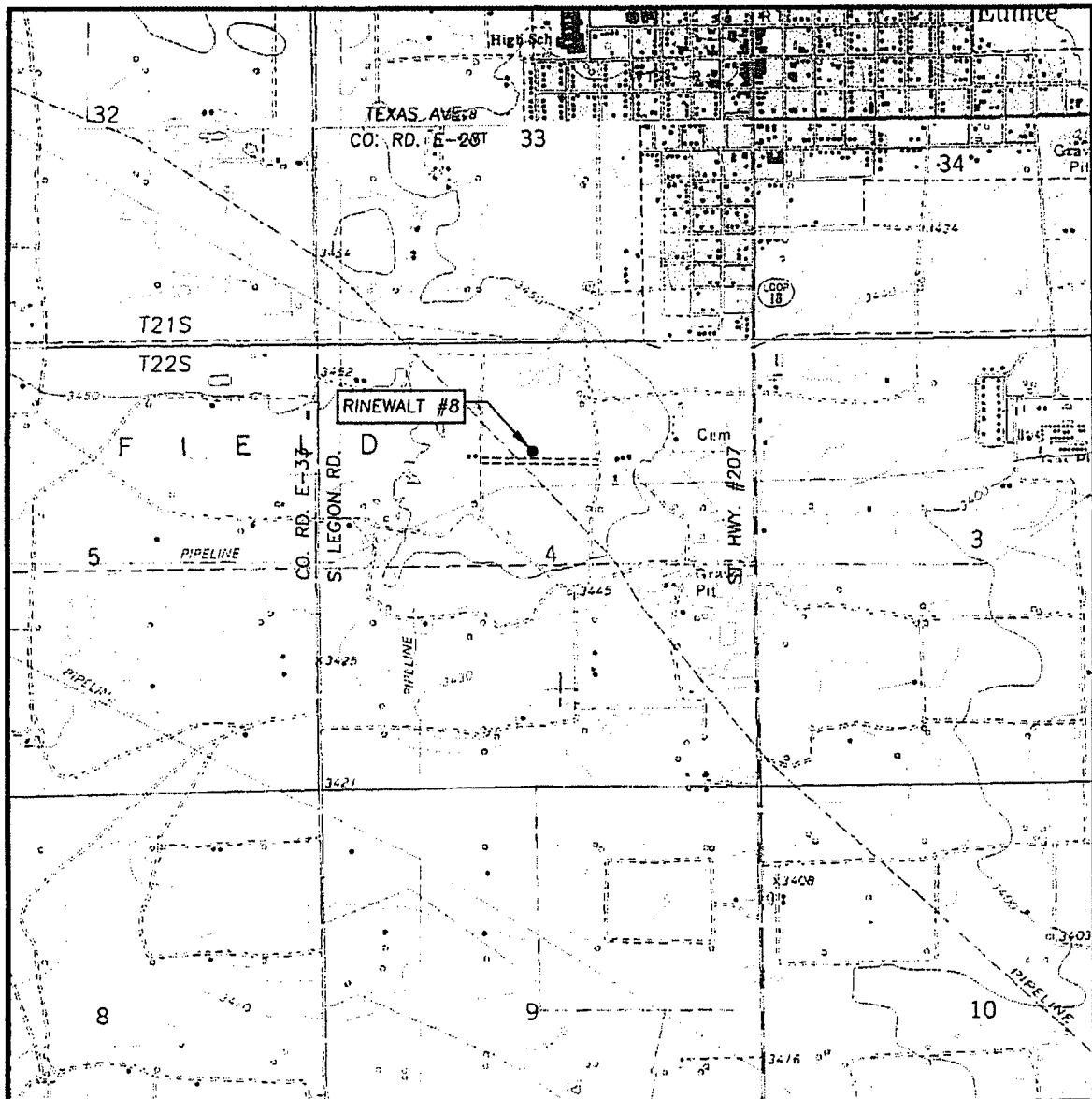
ELEVATION 3456'

OPERATOR APACHE CORPORATION

LEASE RINEWALT



LOCATION VERIFICATION MAP



SCALE: 1" = 2000'

CONTOUR INTERVAL:
EUNICE, N.M. - 10'

SEC. 4 TWP. 22-S RGE. 37-E

SURVEY N.M.P.M.

COUNTY LEA STATE NEW MEXICO

DESCRIPTION 1290' FNL & 2580' FWL

ELEVATION 3456'

OPERATOR APACHE CORPORATION

LEASE RINEWALT

U.S.G.S. TOPOGRAPHIC MAP
EUNICE, N.M.

