

DISTRICT I

P.O. Box 1980, Hobbs, NM 88240

DISTRICT II

P.O. Box Drawer DD, Artesia, NM 88210

DISTRICT III

1000 Rio Brazos Rd., Aztec, NM 87410

**OIL CONSERVATION DIVISION**

P.O. Box 2088

Santa Fe, New Mexico 87504-2088

WELL API NO.

30-025-35213

5. Indicate Type of Lease

STATE ☒

FEE ☐

6. State Oil / Gas Lease No.

**SUNDRY NOTICES AND REPORTS ON WELLS**  
(DO NOT USE THIS FORM FOR PROPOSALS TO DRILL OR TO DEEPEN OR PLUG BACK TO  
DIFFERENT RESERVOIR. USE "APPLICATION FOR PERMI  
(FORM C-101) FOR SUCH PROPOSALS.

1. Type of Well: OIL WELL ☐ GAS WELL ☐ OTHER WIW/CO2

2. Name of Operator  
CHEVRON USA INC

3. Address of Operator  
15 SMITH RD, MIDLAND, TX 79705

4. Well Location  
Unit Letter B : 74 Feet From The NORTH Line and 1940 Feet From The EAST Line  
Section 36 Township 17-S Range 34-E NMPM LEA COUNTY

10. Elevation (Show whether DF, RKB, RT, GR, etc.) 3997'

11. Check Appropriate Box to Indicate Nature of Notice, Report, or Other Data

**NOTICE OF INTENTION TO:**

PERFORM REMEDIAL WORK ☐ PLUG AND ABANDON ☐  
TEMPORARILY ABANDON ☐ CHANGE PLANS ☐  
PULL OR ALTER CASING ☐  
OTHER: ☐

**SUBSEQUENT REPORT OF:**

REMEDIAL WORK ☐ ALTERING CASING ☐  
COMMENCE DRILLING OPERATION ☐ PLUG AND ABANDONMENT ☐  
CASING TEST AND CEMENT JOB ☐  
OTHER: WELLWORK ☒

12. Describe Proposed or Completed Operations (Clearly state all pertinent details, and give pertinent dates, including estimated date of starting any proposed work) SEE RULE 1103.

12-27-06: MIRU. PMP 20 BBLS MUD & 10 BBLS BW DN TBG TO KILL WELL.

12-28-06: TOH W/70 JTS TBG.

12-29-06: LD PKR. PU PKR, 2 3/8" TBG.

01-02-07: SET PKR @ 4114. REL ON/OFF TOOL. CIRC PKR FLUID. LATCH ONTO PKR.

01-03-07: TEST TO 520#. LEAK OFF 40# IN 15 MINS. RETEST TO 540#. LOST 60# IN 20 MINS. TIH W/BLANKING PLUG. REL ON/OFF TOOL.

CIRC 130 BBLS PKR FLUID TO DISPLACE FOAMY FLUID. LATCH ONTO PKR.

01-04-07: TIH & PULL PRONG. CAUGHT PLUG. PRESS CSG TO 540#. GAIN 10# IN 33 MINS. MIT GOOD. RIG DOWN. FINAL REPORT.

I hereby certify that the information above is true and complete to the best of my knowledge and belief.

SIGNATURE Denise Pinkerton TITLE Regulatory Specialist

DATE 1/8/2007

TYPE OR PRINT NAME Denise Pinkerton

Telephone No. 432-687-7375

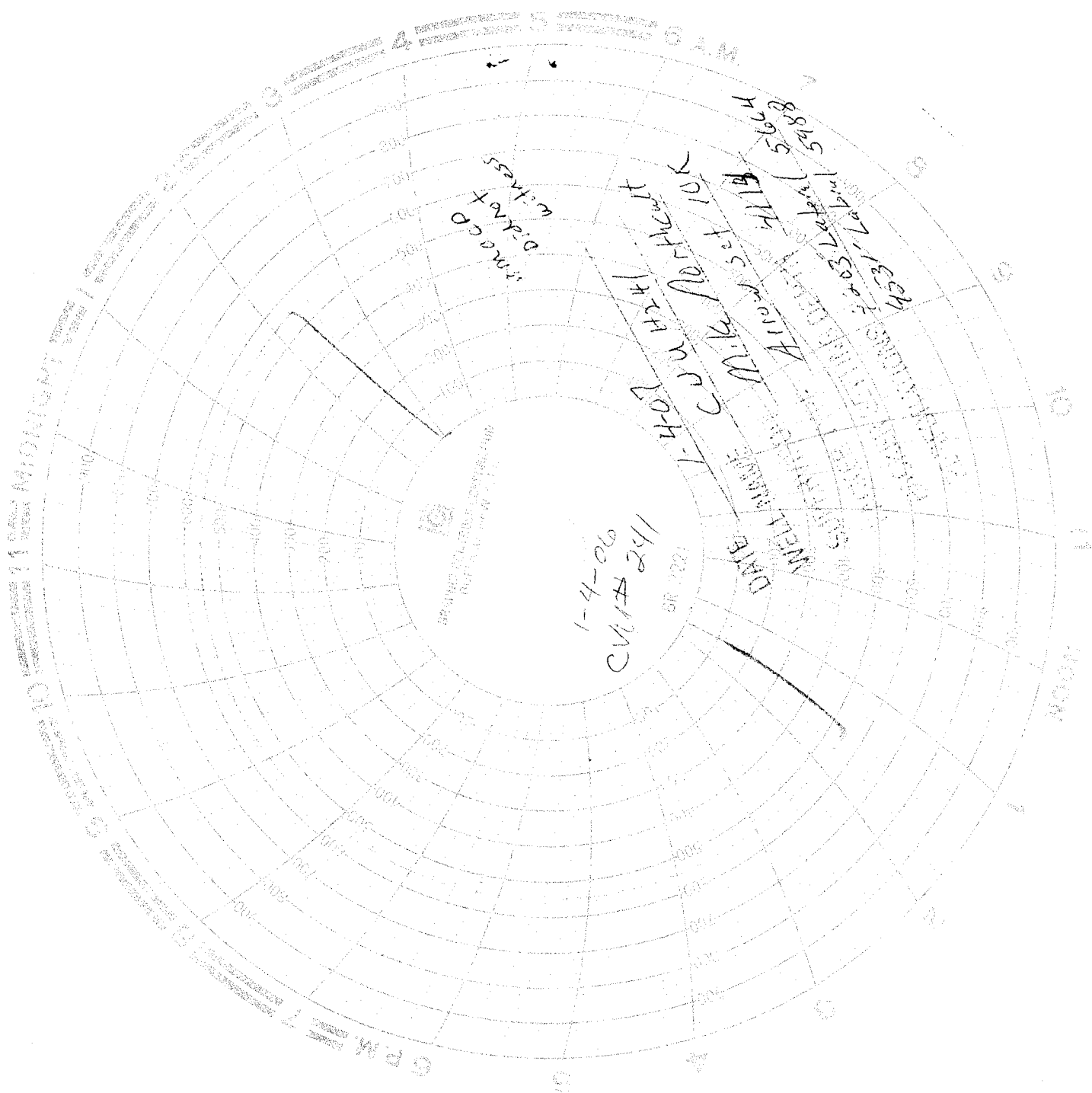
(This space for State Use)

APPROVED Harry W. Wink  
CONDITIONS OF APPROVAL, IF ANY:

**OC FIELD REPRESENTATIVE II/STAFF MANAGER**

TITLE DATE

JAN 12 2007



1-4-06  
CV# 241

BR 2221

DATE

WELL MADE

1-4-07  
1-4-08  
1-4-09  
1-4-10  
1-4-11  
1-4-12  
1-4-13  
1-4-14  
1-4-15  
1-4-16  
1-4-17  
1-4-18  
1-4-19  
1-4-20  
1-4-21  
1-4-22  
1-4-23  
1-4-24  
1-4-25  
1-4-26  
1-4-27  
1-4-28  
1-4-29  
1-4-30  
1-4-31  
1-4-32  
1-4-33  
1-4-34  
1-4-35  
1-4-36  
1-4-37  
1-4-38  
1-4-39  
1-4-40  
1-4-41  
1-4-42  
1-4-43  
1-4-44  
1-4-45  
1-4-46  
1-4-47  
1-4-48  
1-4-49  
1-4-50  
1-4-51  
1-4-52  
1-4-53  
1-4-54  
1-4-55  
1-4-56  
1-4-57  
1-4-58  
1-4-59  
1-4-60  
1-4-61  
1-4-62  
1-4-63  
1-4-64  
1-4-65  
1-4-66  
1-4-67  
1-4-68  
1-4-69  
1-4-70  
1-4-71  
1-4-72  
1-4-73  
1-4-74  
1-4-75  
1-4-76  
1-4-77  
1-4-78  
1-4-79  
1-4-80  
1-4-81  
1-4-82  
1-4-83  
1-4-84  
1-4-85  
1-4-86  
1-4-87  
1-4-88  
1-4-89  
1-4-90  
1-4-91  
1-4-92  
1-4-93  
1-4-94  
1-4-95  
1-4-96  
1-4-97  
1-4-98  
1-4-99  
1-4-100

1-4-07  
1-4-08  
1-4-09  
1-4-10  
1-4-11  
1-4-12  
1-4-13  
1-4-14  
1-4-15  
1-4-16  
1-4-17  
1-4-18  
1-4-19  
1-4-20  
1-4-21  
1-4-22  
1-4-23  
1-4-24  
1-4-25  
1-4-26  
1-4-27  
1-4-28  
1-4-29  
1-4-30  
1-4-31  
1-4-32  
1-4-33  
1-4-34  
1-4-35  
1-4-36  
1-4-37  
1-4-38  
1-4-39  
1-4-40  
1-4-41  
1-4-42  
1-4-43  
1-4-44  
1-4-45  
1-4-46  
1-4-47  
1-4-48  
1-4-49  
1-4-50  
1-4-51  
1-4-52  
1-4-53  
1-4-54  
1-4-55  
1-4-56  
1-4-57  
1-4-58  
1-4-59  
1-4-60  
1-4-61  
1-4-62  
1-4-63  
1-4-64  
1-4-65  
1-4-66  
1-4-67  
1-4-68  
1-4-69  
1-4-70  
1-4-71  
1-4-72  
1-4-73  
1-4-74  
1-4-75  
1-4-76  
1-4-77  
1-4-78  
1-4-79  
1-4-80  
1-4-81  
1-4-82  
1-4-83  
1-4-84  
1-4-85  
1-4-86  
1-4-87  
1-4-88  
1-4-89  
1-4-90  
1-4-91  
1-4-92  
1-4-93  
1-4-94  
1-4-95  
1-4-96  
1-4-97  
1-4-98  
1-4-99  
1-4-100

1-4-07  
1-4-08  
1-4-09  
1-4-10  
1-4-11  
1-4-12  
1-4-13  
1-4-14  
1-4-15  
1-4-16  
1-4-17  
1-4-18  
1-4-19  
1-4-20  
1-4-21  
1-4-22  
1-4-23  
1-4-24  
1-4-25  
1-4-26  
1-4-27  
1-4-28  
1-4-29  
1-4-30  
1-4-31  
1-4-32  
1-4-33  
1-4-34  
1-4-35  
1-4-36  
1-4-37  
1-4-38  
1-4-39  
1-4-40  
1-4-41  
1-4-42  
1-4-43  
1-4-44  
1-4-45  
1-4-46  
1-4-47  
1-4-48  
1-4-49  
1-4-50  
1-4-51  
1-4-52  
1-4-53  
1-4-54  
1-4-55  
1-4-56  
1-4-57  
1-4-58  
1-4-59  
1-4-60  
1-4-61  
1-4-62  
1-4-63  
1-4-64  
1-4-65  
1-4-66  
1-4-67  
1-4-68  
1-4-69  
1-4-70  
1-4-71  
1-4-72  
1-4-73  
1-4-74  
1-4-75  
1-4-76  
1-4-77  
1-4-78  
1-4-79  
1-4-80  
1-4-81  
1-4-82  
1-4-83  
1-4-84  
1-4-85  
1-4-86  
1-4-87  
1-4-88  
1-4-89  
1-4-90  
1-4-91  
1-4-92  
1-4-93  
1-4-94  
1-4-95  
1-4-96  
1-4-97  
1-4-98  
1-4-99  
1-4-100

1-4-07  
1-4-08  
1-4-09  
1-4-10  
1-4-11  
1-4-12  
1-4-13  
1-4-14  
1-4-15  
1-4-16  
1-4-17  
1-4-18  
1-4-19  
1-4-20  
1-4-21  
1-4-22  
1-4-23  
1-4-24  
1-4-25  
1-4-26  
1-4-27  
1-4-28  
1-4-29  
1-4-30  
1-4-31  
1-4-32  
1-4-33  
1-4-34  
1-4-35  
1-4-36  
1-4-37  
1-4-38  
1-4-39  
1-4-40  
1-4-41  
1-4-42  
1-4-43  
1-4-44  
1-4-45  
1-4-46  
1-4-47  
1-4-48  
1-4-49  
1-4-50  
1-4-51  
1-4-52  
1-4-53  
1-4-54  
1-4-55  
1-4-56  
1-4-57  
1-4-58  
1-4-59  
1-4-60  
1-4-61  
1-4-62  
1-4-63  
1-4-64  
1-4-65  
1-4-66  
1-4-67  
1-4-68  
1-4-69  
1-4-70  
1-4-71  
1-4-72  
1-4-73  
1-4-74  
1-4-75  
1-4-76  
1-4-77  
1-4-78  
1-4-79  
1-4-80  
1-4-81  
1-4-82  
1-4-83  
1-4-84  
1-4-85  
1-4-86  
1-4-87  
1-4-88  
1-4-89  
1-4-90  
1-4-91  
1-4-92  
1-4-93  
1-4-94  
1-4-95  
1-4-96  
1-4-97  
1-4-98  
1-4-99  
1-4-100

1-4-07  
1-4-08  
1-4-09  
1-4-10  
1-4-11  
1-4-12  
1-4-13  
1-4-14  
1-4-15  
1-4-16  
1-4-17  
1-4-18  
1-4-19  
1-4-20  
1-4-21  
1-4-22  
1-4-23  
1-4-24  
1-4-25  
1-4-26  
1-4-27  
1-4-28  
1-4-29  
1-4-30  
1-4-31  
1-4-32  
1-4-33  
1-4-34  
1-4-35  
1-4-36  
1-4-37  
1-4-38  
1-4-39  
1-4-40  
1-4-41  
1-4-42  
1-4-43  
1-4-44  
1-4-45  
1-4-46  
1-4-47  
1-4-48  
1-4-49  
1-4-50  
1-4-51  
1-4-52  
1-4-53  
1-4-54  
1-4-55  
1-4-56  
1-4-57  
1-4-58  
1-4-59  
1-4-60  
1-4-61  
1-4-62  
1-4-63  
1-4-64  
1-4-65  
1-4-66  
1-4-67  
1-4-68  
1-4-69  
1-4-70  
1-4-71  
1-4-72  
1-4-73  
1-4-74  
1-4-75  
1-4-76  
1-4-77  
1-4-78  
1-4-79  
1-4-80  
1-4-81  
1-4-82  
1-4-83  
1-4-84  
1-4-85  
1-4-86  
1-4-87  
1-4-88  
1-4-89  
1-4-90  
1-4-91  
1-4-92  
1-4-93  
1-4-94  
1-4-95  
1-4-96  
1-4-97  
1-4-98  
1-4-99  
1-4-100