

DISTRICT I
1625 N. FRENCH DR., HOBBS, NM 88240

State of New Mexico
Energy, Minerals and Natural Resources Department

DISTRICT II
1301 W. GRAND AVENUE, ARTESIA, NM 88210

DISTRICT III
1000 Rio Brazos Rd., Aztec, NM 87410

DISTRICT IV
1220 S. ST. FRANCIS DR., SANTA FE, NM 87505

OIL CONSERVATION DIVISION
1220 SOUTH ST. FRANCIS DR.
Santa Fe, New Mexico 87505

Form C-102
Revised October 12, 2005
Submit to Appropriate District Office
State Lease - 4 Copies
Fee Lease - 3 Copies

WELL LOCATION AND ACREAGE DEDICATION PLAT

☐ AMENDED REPORT

API Number 30-025-38149	Pool Code 23000	Pool Name Eunice Monument; Grayburg-San Andres
Property Code 302708	Property Name NMGSAU	Well Number 346
OGRID No. 873	Operator Name APACHE CORPORATION	Elevation 3559'

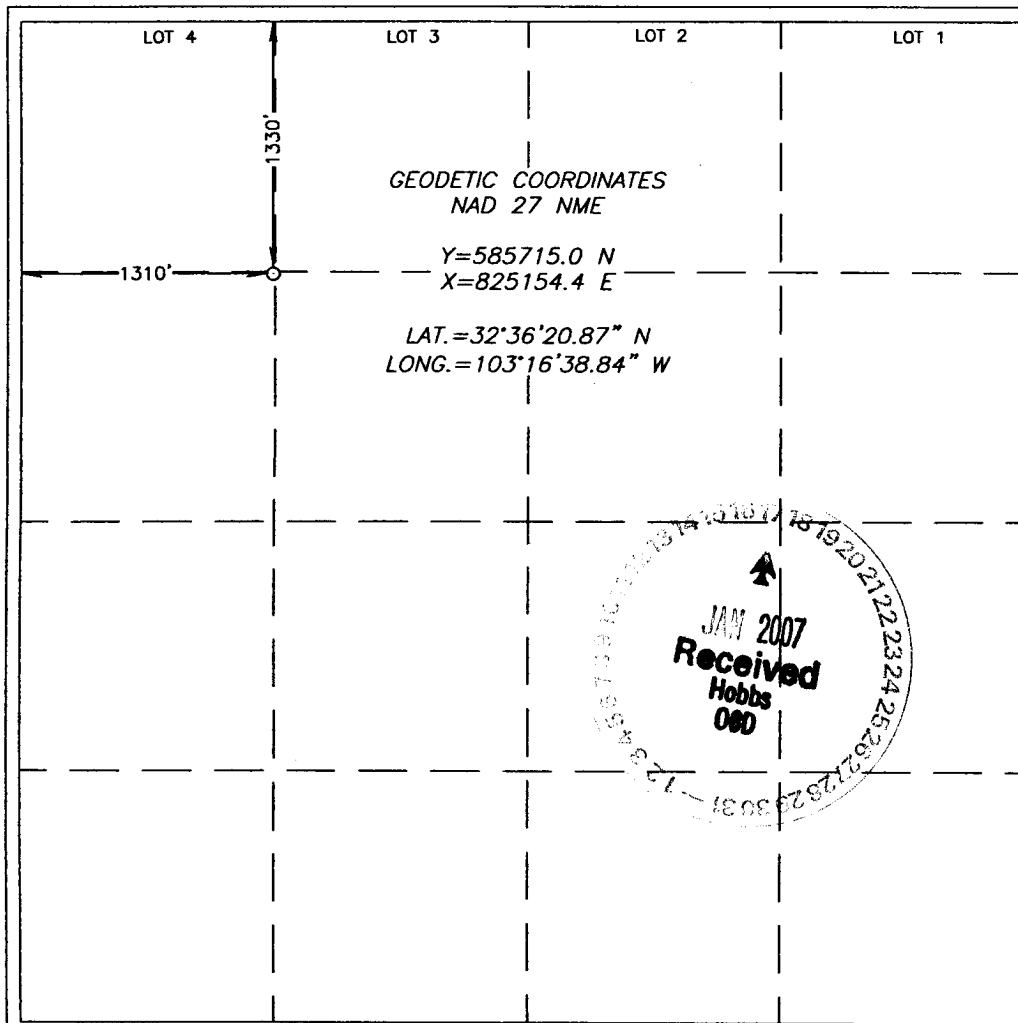
Surface Location

UL or lot No. E	Section 5	Township 20-S	Range 37-E	Lot Idn	Feet from the 1330	North/South line NORTH	Feet from the 1310	East/West line WEST	County LEA
--------------------	--------------	------------------	---------------	---------	-----------------------	---------------------------	-----------------------	------------------------	---------------

Bottom Hole Location If Different From Surface

UL or lot No.	Section	Township	Range	Lot Idn	Feet from the	North/South line	Feet from the	East/West line	County
Dedicated Acres 40	Joint or Infill	Consolidation Code	Order No.						

NO ALLOWABLE WILL BE ASSIGNED TO THIS COMPLETION UNTIL ALL INTERESTS HAVE BEEN CONSOLIDATED
OR A NON-STANDARD UNIT HAS BEEN APPROVED BY THE DIVISION



OPERATOR CERTIFICATION

I hereby certify that the information herein is true and complete to the best of my knowledge and belief, and that this organization either owns a working interest or unleased mineral interest in the land including the proposed bottom hole location or has a right to drill this well at this location pursuant to a contract with an owner of such mineral or working interest, or to a voluntary pooling agreement or a compulsory pooling order heretofore entered by the division.

S. Mackay 01/08/07
Signature Date
Sophie Mackay
Printed Name

SURVEYOR CERTIFICATION

I hereby certify that the well location shown on this plat was plotted from field notes of actual surveys made by me or under my supervision, and that the same is true and correct to the best of my belief.

MAY 08, 2006

Date Surveyed REVISION DATE: 06/13/06
Signature & Seal of Professional Surveyor MR

Gary K. Edson 06/14/06
06.13.1014

Certificate No. GARY EDSON 12641
RONALD J. EDSON 3239