

DISTRICT I
1625 N. FRENCH DR., MOBBS, NM 88240

DISTRICT II
1301 W. GRAND AVENUE, ARTESIA, NM 88210

DISTRICT III
1000 Rio Brazos Rd., Aztec, NM 87410

DISTRICT IV
1220 S. ST. FRANCIS DR., SANTA FE, NM 87505

State of New Mexico
Energy, Minerals and Natural Resources Department

OIL CONSERVATION DIVISION
1220 SOUTH ST. FRANCIS DR.
Santa Fe, New Mexico 87505

Form C-102
Revised JUNE 10, 2003
Submit to Appropriate District Office
State Lease - 4 Copies
Fee Lease - 3 Copies

WELL LOCATION AND ACREAGE DEDICATION PLAT

☐ AMENDED REPORT

API Number 30-025-37656	Pool Code 43250	Pool Name MALJAMAR-ABO
Property Code 302508	Property Name JC FEDERAL	Well Number 4
OGRID No. 229137	Operator Name COG OPERATING LLC	Elevation 4004'

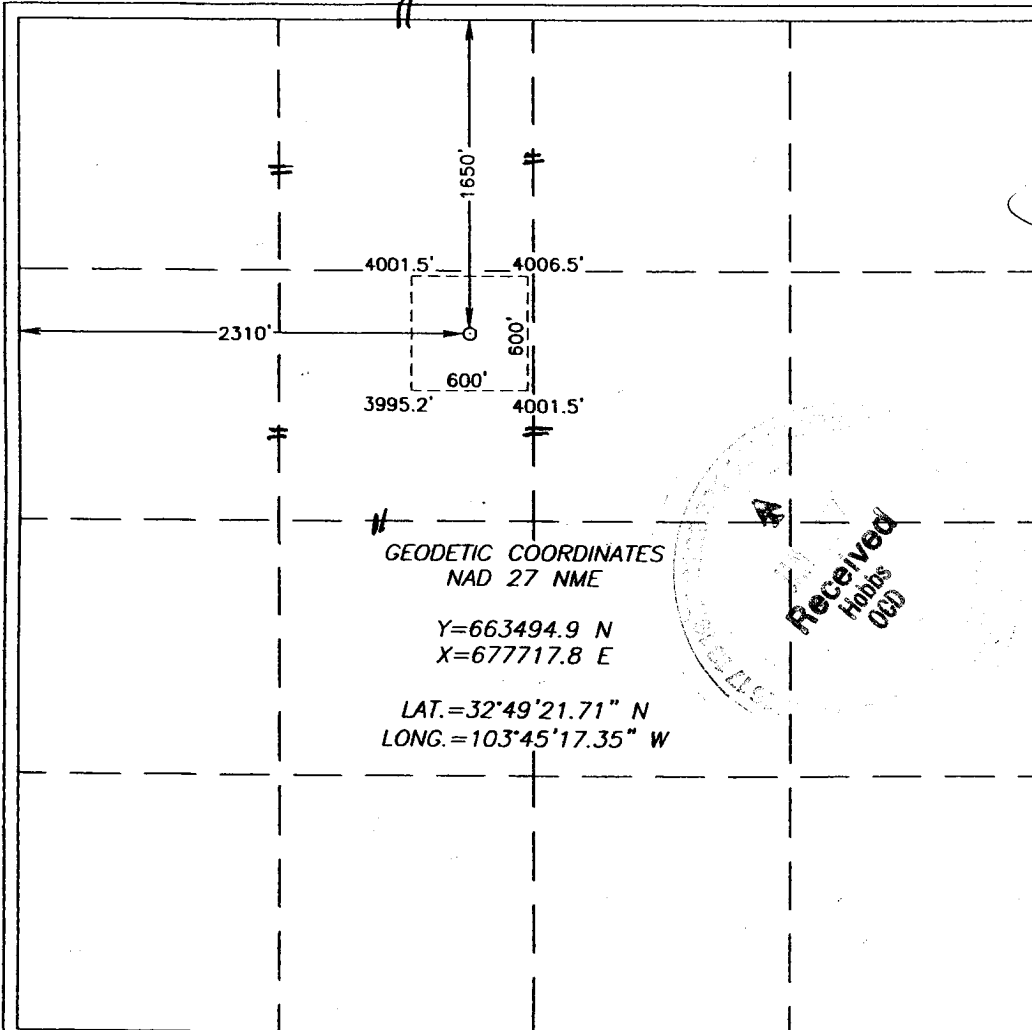
Surface Location

UL or lot No. F	Section 22	Township 17-S	Range 32-E	Lot Idn	Feet from the 1650	North/South line NORTH	Feet from the 2310	East/West line WEST	County LEA
--------------------	---------------	------------------	---------------	---------	-----------------------	---------------------------	-----------------------	------------------------	---------------

Bottom Hole Location If Different From Surface

UL or lot No.	Section	Township	Range	Lot Idn	Feet from the	North/South line	Feet from the	East/West line	County
Dedicated Acres 80	Joint or Infill	Consolidation Code	Order No.						

NO ALLOWABLE WILL BE ASSIGNED TO THIS COMPLETION UNTIL ALL INTERESTS HAVE BEEN CONSOLIDATED
OR A NON-STANDARD UNIT HAS BEEN APPROVED BY THE DIVISION



OPERATOR CERTIFICATION

I hereby certify the the information
contained herein is true and complete to the
best of my knowledge and belief.

Phyllis A. Edwards
Signature
Phyllis A. Edwards
Printed Name
Regulatory Analyst
Title
1-23-07
Date

SURVEYOR CERTIFICATION

I hereby certify that the well location shown
on this plat was plotted from field notes of
actual surveys made by me or under my
supervision, and that the same is true and
correct to the best of my belief.

NOVEMBER 09, 2005

Date Surveyed
Signature & Seal of
Professional Surveyor

Ronald J. Edison
11/14/05
05.11.1728

Certificate No. GARY EDISON 12641
RONALD J. EDISON 3239

State of New Mexico

DISTRICT I

1625 N. FRENCH DR., MOBBS, NM 88240

DISTRICT II

1301 W. GRAND AVENUE, ARTESIA, NM 88210

DISTRICT III

1000 Rio Brazos Rd., Aztec, NM 87410

DISTRICT IV

1220 S. ST. FRANCIS DR., SANTA FE, NM 87505

Energy, Minerals and Natural Resources Department

OIL CONSERVATION DIVISION

1220 SOUTH ST. FRANCIS DR.
Santa Fe, New Mexico 87505

Form C-102

Revised JUNE 10, 2003

Submit to Appropriate District Office

State Lease - 4 Copies

Fee Lease - 3 Copies

WELL LOCATION AND ACREAGE DEDICATION PLAT

☐ AMENDED REPORT

API Number 30-025-37656	Pool Code 4480	Pool Name BALSH; WOLFCAMP
Property Code 302508	Property Name JC FEDERAL	Well Number 4
OGRID No. 229137	Operator Name COG OPERATING LLC	Elevation 4004'

Surface Location

UL or lot No.	Section	Township	Range	Lot Idn	Feet from the	North/South line	Feet from the	East/West line	County
F	22	17-S	32-E		1650	NORTH	2310	WEST	LEA

Bottom Hole Location If Different From Surface

UL or lot No.	Section	Township	Range	Lot Idn	Feet from the	North/South line	Feet from the	East/West line	County
Dedicated Acres 80	Joint or Infill	Consolidation Code	Order No.						

NO ALLOWABLE WILL BE ASSIGNED TO THIS COMPLETION UNTIL ALL INTERESTS HAVE BEEN CONSOLIDATED
OR A NON-STANDARD UNIT HAS BEEN APPROVED BY THE DIVISION

<p>GEODETIC COORDINATES NAD 27 NME Y=663494.9 N X=677717.8 E LAT.=32°49'21.71" N LONG.=103°45'17.35" W</p>	<h3>OPERATOR CERTIFICATION</h3> <p>I hereby certify the the information contained herein is true and complete to the best of my knowledge and belief.</p> <p><i>Phyllis A. Edwards</i> Signature Phyllis A. Edwards Printed Name Regulatory Analyst Title 1-23-07 Date</p> <h3>SURVEYOR CERTIFICATION</h3> <p>I hereby certify that the well location shown on this plat was plotted from field notes of actual surveys made by me or under my supervision, and that the same is true and correct to the best of my belief.</p> <p>NOVEMBER 09, 2005</p> <p>Date Surveyed Signature & Seal of Professional Surveyor RONALD J. EDISON 11/14/05 05.11.1728 Certificate No. GARY EDISON 12641 RONALD J. EDISON 3239</p>
--	--