

DISTRICT I  
1625 N. FRENCH DR., HOBBS, NM 88240

DISTRICT II  
1301 W. GRAND AVENUE, ARTESIA, NM 88210

DISTRICT III  
1000 Rio Brazos Rd., Aztec, NM 87410

DISTRICT IV  
1220 S. ST. FRANCIS DR., SANTA FE, NM 87505

State of New Mexico  
Energy, Minerals and Natural Resources Department

OIL CONSERVATION DIVISION  
1220 SOUTH ST. FRANCIS DR.  
Santa Fe, New Mexico 87505

Form C-102  
Revised JUNE 10, 2003  
Submit to Appropriate District Office  
State Lease - 4 Copies  
Fee Lease - 3 Copies

WELL LOCATION AND ACREAGE DEDICATION PLAT

☐ AMENDED REPORT

API Number 30-025-38054	Pool Code 50350	Pool Name Penrose Skelly; Grayburg
Property Code 23112	Property Name SOUTHLAND ROYALTY A	Well Number 25
OGRID No. 873	Operator Name APACHE CORPORATION	Elevation 3472'

Surface Location

UL or lot No. A	Section 9	Township 21-S	Range 37-E	Lot Idn	Feet from the 170	North/South line NORTH	Feet from the 1260	East/West line EAST	County LEA
--------------------	--------------	------------------	---------------	---------	----------------------	---------------------------	-----------------------	------------------------	---------------

Bottom Hole Location If Different From Surface

UL or lot No.	Section	Township	Range	Lot Idn	Feet from the	North/South line	Feet from the	East/West line	County
Dedicated Acres 40	Joint or Infill	Consolidation Code	Order No. NSL - 5385 CSD7						

NO ALLOWABLE WILL BE ASSIGNED TO THIS COMPLETION UNTIL ALL INTERESTS HAVE BEEN CONSOLIDATED  
OR A NON-STANDARD UNIT HAS BEEN APPROVED BY THE DIVISION

SECTION 4	SECTION 9
GEODETIC COORDINATES NAD 27 NME Y=547627.7 N X=860802.6 E LAT.=32°30'00.35" N LONG.=103°09'47.06" W	
170'	
1260'	

OPERATOR CERTIFICATION

I hereby certify the the information  
contained herein is true and complete to the  
best of my knowledge and belief.

Sophie Mackay  
Signature  
Sophie Mackay  
Printed Name  
Engineering Tech  
Title  
December 15, 2006  
Date

SURVEYOR CERTIFICATION

I hereby certify that the well location shown  
on this plat was plotted from field notes of  
actual surveys made by me or under my  
supervision, and that the same is true and  
correct to the best of my belief.

NOVEMBER 30, 2005

Date Surveyed  
Signature & Seal of  
Professional Surveyor

GARY EIDSON  
12/9/05  
05.11.1817  
Certificate No. RONALD J. EIDSON 3239  
GARY EIDSON 12641

# State of New Mexico

Energy, Minerals and Natural Resources Department

## DISTRICT I

1625 N. FRENCH DR., HOBBES, NM 88240

## DISTRICT II

1301 W. GRAND AVENUE, ARTESIA, NM 88210

## DISTRICT III

1000 Rio Brazos Rd., Artec, NM 87410

## DISTRICT IV

1220 S. ST. FRANCIS DR., SANTA FE, NM 87505

## OIL CONSERVATION DIVISION

1220 SOUTH ST. FRANCIS DR.  
Santa Fe, New Mexico 87505

Form C-102  
Revised JUNE 10, 2003  
Submit to Appropriate District Office  
State Lease - 4 Copies  
Fee Lease - 3 Copies

## WELL LOCATION AND ACREAGE DEDICATION PLAT

☐ AMENDED REPORT

API Number 30-025-38054	Pool Code 50350	Pool Name Penrose Skelly; Grayburg
Property Code 23112	Property Name SOUTHLAND ROYALTY A	Well Number 25
OGRID No. 873	Operator Name APACHE CORPORATION	Elevation 3472'

### Surface Location

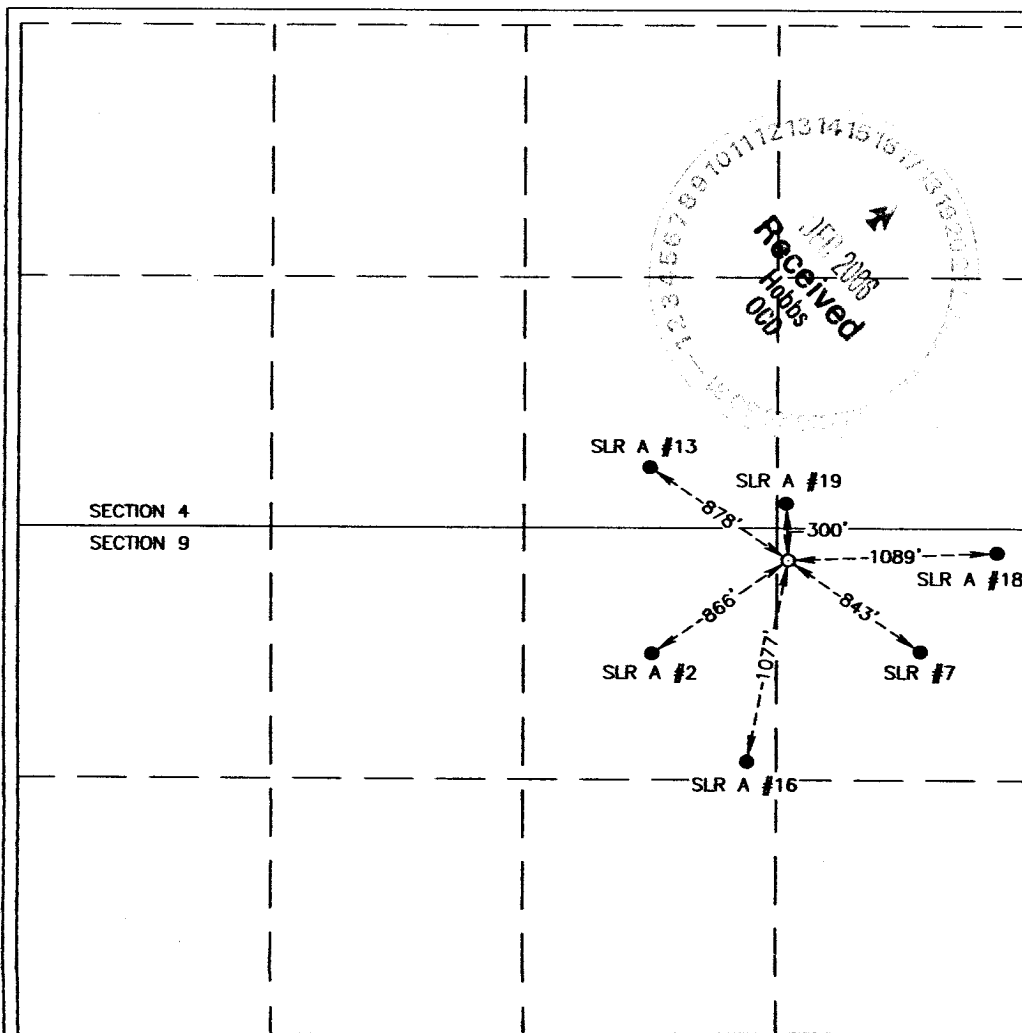
UL or lot No.	Section	Township	Range	Lot Idn	Feet from the	North/South line	Feet from the	East/West line	County
A	9	21-S	37-E		170	NORTH	1260	EAST	LEA

### Bottom Hole Location If Different From Surface

UL or lot No.	Section	Township	Range	Lot Idn	Feet from the	North/South line	Feet from the	East/West line	County

Dedicated Acres 40	Joint or Infill	Consolidation Code	Order No.
-----------------------	-----------------	--------------------	-----------

NO ALLOWABLE WILL BE ASSIGNED TO THIS COMPLETION UNTIL ALL INTERESTS HAVE BEEN CONSOLIDATED  
OR A NON-STANDARD UNIT HAS BEEN APPROVED BY THE DIVISION



### OPERATOR CERTIFICATION

I hereby certify the the information  
contained herein is true and complete to the  
best of my knowledge and belief.

A. Mackay  
Signature

Sophie Mackay  
Printed Name

Engineering Tech  
Title  
December 15, 2006  
Date

### SURVEYOR CERTIFICATION

I hereby certify that the well location shown  
on this plat was plotted from field notes of  
actual surveys made by me or under my  
supervision, and that the same is true and  
correct to the best of my belief.

NOVEMBER 30, 2005

Date Surveyed JR  
Signature & Seal of  
Professional Surveyor

05.11.1817

Certificate No. RONALD J. EIDSON 3239  
GARY EIDSON 12641