

DISTRICT I  
P. O. Box 1980  
Hobbs, NM 88241-1980

DISTRICT II  
P. O. Drawer DD  
Artesia, NM 88211-0719

DISTRICT III  
1000 Rio Brazos Rd.  
Aztec, NM 87410

DISTRICT IV  
P. O. Box 2088  
Santa Fe, NM 87507-2088

State of New Mexico  
Energy, Minerals, and Natural Resources Department

OIL CONSERVATION DIVISION  
P. O. Box 2088  
Santa Fe, New Mexico 87504-2088

Form C-102  
Revised 02-10-94  
Instructions on back

Submit to the Appropriate  
District Office  
District Lease - 4 copies  
Fee Lease - 3 copies  
**Received**  
Hobbs  
OCD

☐ AMENDED REPORT

WELL LOCATION AND ACREAGE DEDICATION PLAT

1 API Number 30-025-33493		2 Pool Code 58300		3 Pool Name Teague Paddock Blinebry	
4 Property Code 25455		5 Property Name E. C. HILL 'B' FEDERAL			6 Well Number 18
7 OGRID No. 227001		8 Operator Name Latigo Petroleum Inc.			9 Elevation 3275'

10 SURFACE LOCATION

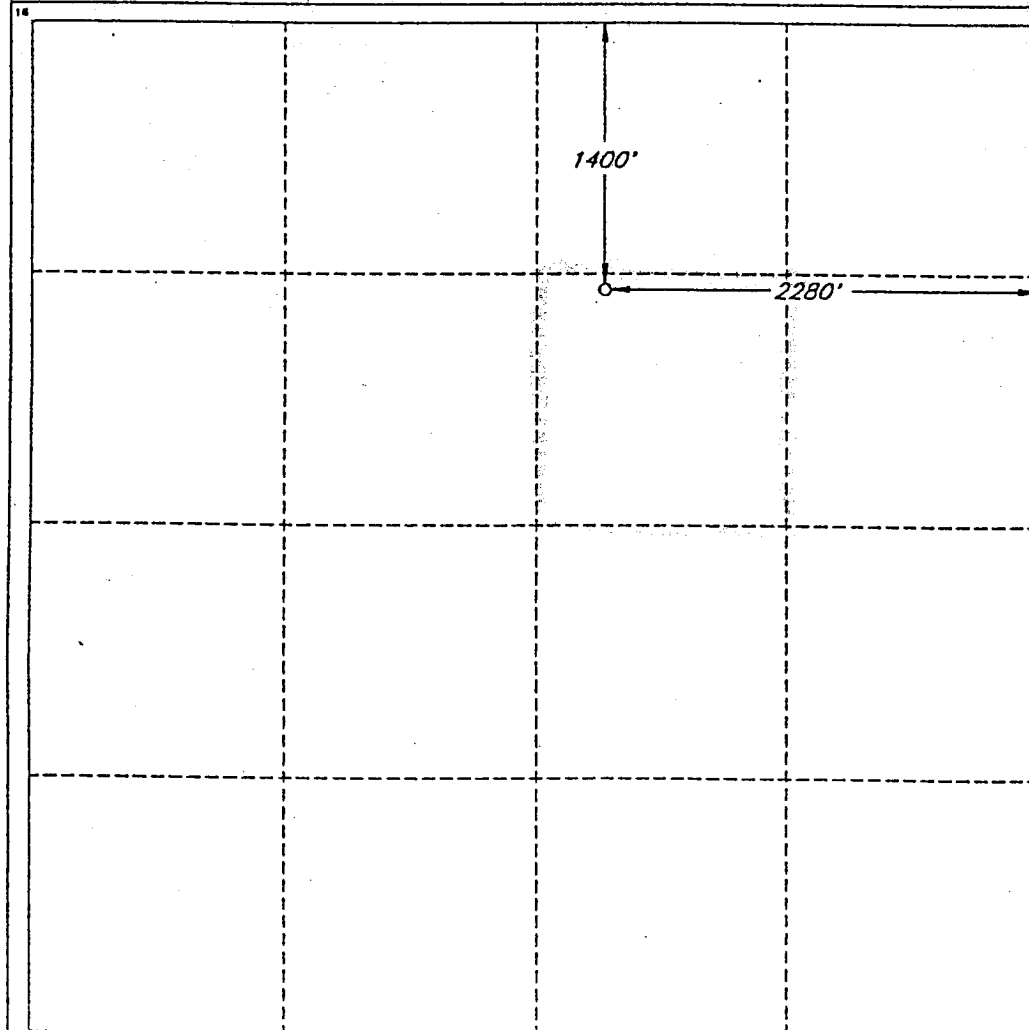
UL or lot no. G	Section 34	Township 23 SOUTH	Range 37 EAST, N.M.P.M.	Lot Ida	Feet from the 1400'	North/South line NORTH	Feet from the 2280'	East/West line EAST	County LEA
--------------------	---------------	----------------------	----------------------------	---------	------------------------	---------------------------	------------------------	------------------------	---------------

11 BOTTOM HOLE LOCATION IF DIFFERENT FROM SURFACE

UL or lot no.	Section	Township	Range	Lot Ida	Feet from the	North/South line	Feet from the	East/West line	County
---------------	---------	----------	-------	---------	---------------	------------------	---------------	----------------	--------

12 Dedicated Acres 40	13 Joint or Infill	14 Consolidation Code	15 Order No. NSL-3683
--------------------------	--------------------	-----------------------	--------------------------

NO ALLOWABLE WELL BE ASSIGNED TO THIS COMPLETION UNTIL ALL INTERESTS HAVE BEEN  
CONSOLIDATED OR A NON-STANDARD UNIT HAS BEEN APPROVED BY THE DIVISION



OPERATOR CERTIFICATION

I hereby certify that the information  
contained herein is true and complete  
to the best of my knowledge and belief.

Signature

*Lisa Hunt*  
Printed Name  
Lisa Hunt

Title

Regulatory Analyst

Date

8/16/06

SURVEYOR CERTIFICATION

I hereby certify that the well  
location shown on this plat was  
plotted from field notes of actual  
surveys made by me or under  
my supervision, and that the  
same is true and correct to the  
best of my belief.

Date of Survey

APRIL 29, 1996

Signature and Seal of  
Professional Surveyor

*V. Lynn Bezner*  
STATE OF NEW MEXICO  
V. LYNN BEZNER  
NO. 7920  
Certified  
V. L. BEZNER AND SHIRLEY  
NO. 7920

DISTRICT I  
P. O. Box 1980  
Hobbs, NM 88241-1980

DISTRICT II  
P. O. Drawer DD  
Artesia, NM 88211-0719

DISTRICT III  
1000 Rio Brazos Rd.  
Aztec, NM 87410

DISTRICT IV  
P. O. Box 2088  
Santa Fe, NM 87507-2088

State of New Mexico  
Energy, Minerals, and Natural Resources Department

OIL CONSERVATION DIVISION  
P. O. Box 2088  
Santa Fe, New Mexico 87504-2088

Form C-102  
Revised 02-10-94

Instructions on back

2007  
Received  
Hobbs  
OCD  
Submit to the Appropriate  
District Office  
State Lease - 4 copies  
Fee Lease - 3 copies

☐ AMENDED REPORT

WELL LOCATION AND ACREAGE DEDICATION PLAT

1 API Number 30-025-33493	2 Pool Code 33600	3 Pool Name Imperial Tubb Drinkard
4 Property Code 25455	5 Property Name E. C. HILL 'B' FEDERAL	6 Well Number 18
7 OGRID No. 227001	8 Operator Name Latigo Petroleum Inc.	9 Elevation 3275'

" SURFACE LOCATION

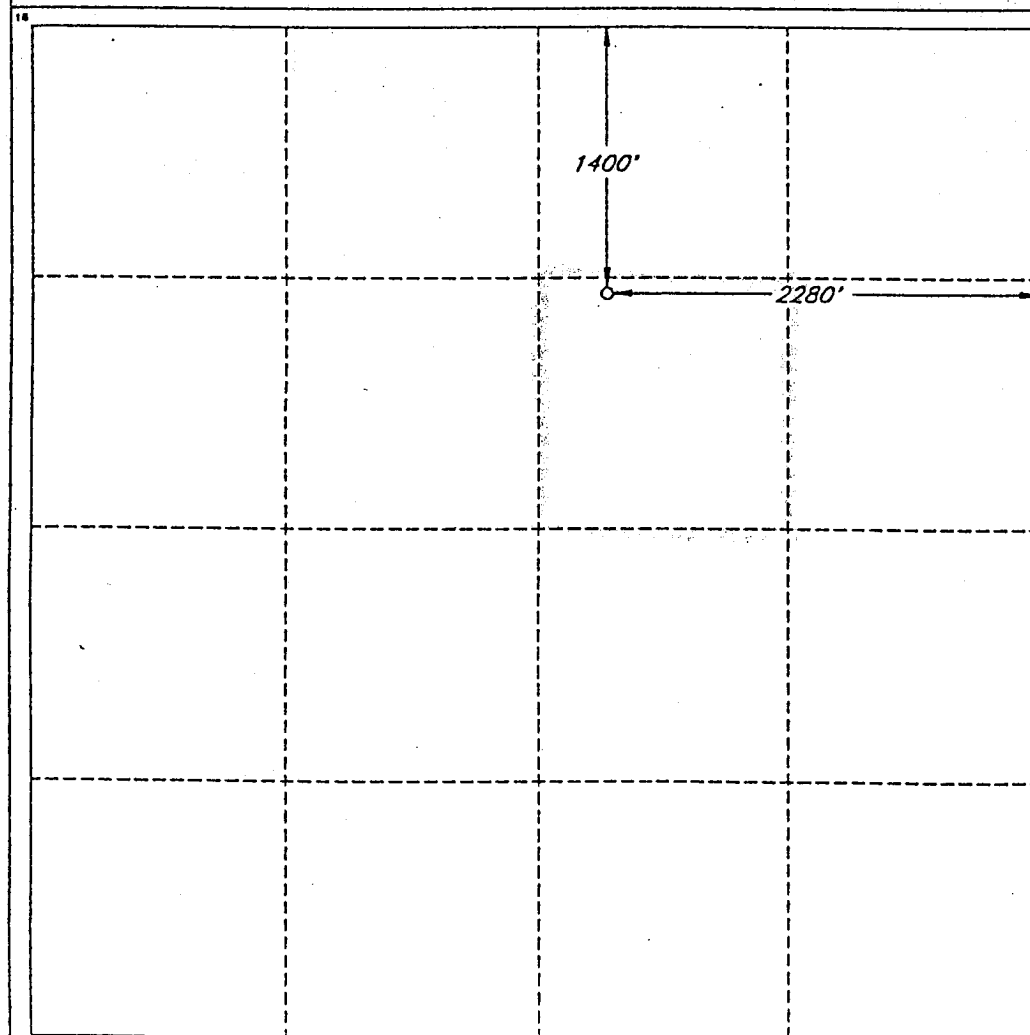
UL or lot no. G	Section 34	Township 23 SOUTH	Range 37 EAST, N.M.P.M.	Lot Ida	Feet from the 1400'	North/South line NORTH	Feet from the 2280'	East/West line EAST	County LEA
--------------------	---------------	----------------------	----------------------------	---------	------------------------	---------------------------	------------------------	------------------------	---------------

" BOTTOM HOLE LOCATION IF DIFFERENT FROM SURFACE

UL or lot no.	Section	Township	Range	Lot Ida	Feet from the	North/South line	Feet from the	East/West line	County
---------------	---------	----------	-------	---------	---------------	------------------	---------------	----------------	--------

12 Dedicated Acres 40	13 Joint or Infill	14 Consolidation Code	15 Order No. NSL-3683
--------------------------	--------------------	-----------------------	--------------------------

NO ALLOWABLE WELL BE ASSIGNED TO THIS COMPLETION UNTIL ALL INTERESTS HAVE BEEN  
CONSOLIDATED OR A NON-STANDARD UNIT HAS BEEN APPROVED BY THE DIVISION



OPERATOR CERTIFICATION

I hereby certify that the information  
contained herein is true and complete  
to the best of my knowledge and belief.

Signature <i>Lisa Hunt</i>
Printed Name Lisa Hunt
Title Regulatory Analyst
Date 8/16/06

SURVEYOR CERTIFICATION

I hereby certify that the well  
location shown on this plat was  
plotted from field notes of actual  
surveys made by me or under  
my supervision, and that the  
same is true and correct to the  
best of my belief.

Date of Survey APRIL 29, 1996
Signature of Seal of Professional Surveyor <i>V. Lynn Bezner</i>
State of New Mexico V. LYNN BEZNER NO. 7920
Certification V. LYNN BEZNER NO. 7920
FOR #2006-5 LOR SW / 151